

EXHIBIT "A-1"

DESCRIPTION OF TEMPORARY DRAINAGE
EASEMENT ABANDONMENT OVER A PORTION OF
993 E. PECOS ROAD
CHANDLER, ARIZONA 85225

THAT ENTIRE TEMPORARY DRAINAGE EASEMENT AS DESCRIBED IN EXHIBIT C-1 AND DEPICTED IN EXHIBIT C-2 OF FINAL ORDER OF CONDEMNATION, RECORDED IN 2004-0867268, RECORDS OF MARICOPA COUNTY, ARIZONA, LYING WITHIN A PORTION OF THE NORTHEAST QUARTER OF SECTION 3, TOWNSHIP 2 SOUTH, RANGE 5 EAST OF THE GILA AND SALT RIVER BASE AND MERIDIAN, MARICOPA COUNTY, ARIZONA, BEING MORE PARTICULARLY DESCRIBED AS FOLLOWS:

COMMENCING AT THE NORTHEAST CORNER OF SAID SECTION 3, SAID CORNER BEING MONUMENTED WITH A BRASS CAP IN HAND HOLE;

THENCE S. 00° 27' 32"E. ALONG THE EAST LINE OF SAID NORTHEAST QUARTER A DISTANCE OF 114.00 FEET;

THENCE S. 89° 44' 01" W. PARALLEL WITH AND 114.00 FEET SOUTH OF THE NORTH LINE OF SAID NORTHEAST QUARTER A DISTANCE OF 79.00 FEET TO THE TRUE POINT OF BEGINNING;

THENCE S. 00° 27' 32" E. PARALLEL WITH AND 79.00 FEET WEST OF SAID EAST LINE A DISTANCE OF 161.00 FEET;

THENCE N. 89° 44' 01" E. PARALLEL WITH AND 275.00 FEET SOUTH OF SAID NORTH LINE A DISTANCE OF 14.00 FEET;

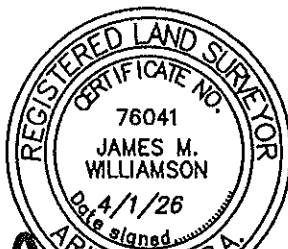
THENCE S. 00° 27' 32" E. PARALLEL WITH AND 65.00 FEET WEST OF SAID EAST LINE A DISTANCE OF 85.00 FEET;

THENCE S. 89° 44' 01" W. PARALLEL WITH AND 360.00 FEET SOUTH OF SAID NORTH LINE A DISTANCE OF 102.00 FEET;

THENCE N. 00° 27' 32" W. PARALLEL WITH AND 167.00 FEET WEST OF SAID EAST LINE A DISTANCE OF 246.00 FEET;

THENCE N. 89° 44' 01" E. PARALLEL WITH AND 114.00 FEET SOUTH OF SAID NORTH LINE A DISTANCE OF 88.00 FEET TO THE TRUE POINT OF BEGINNING.

CONTAINING 22,838 SQUARE FEET, MORE OR LESS.

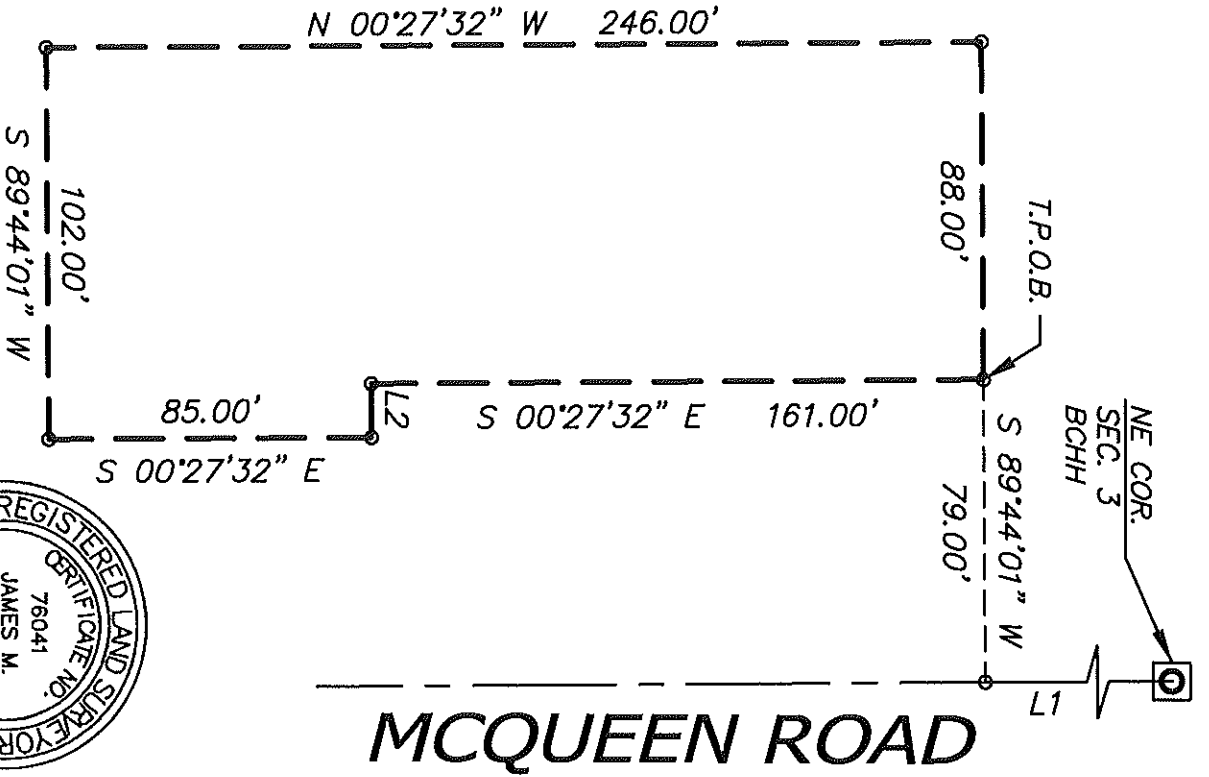


A handwritten signature in black ink, appearing to read "James M. Williamson".

 SUPERIOR SURVEYING SERVICES, INC.
DATE: 4/1/26

2122 W. Lone Cactus Dr. Ste. 11, Phoenix, AZ 85027 623-869-0223 (office) 623-869-0726 (fax) www.superiorsurveying.com info@superiorsurveying.com
JOB NO.: 202603147

A.P.N.
303-28-252B



NE COR.
SEC. 3
BCHH

MCQUEEN ROAD

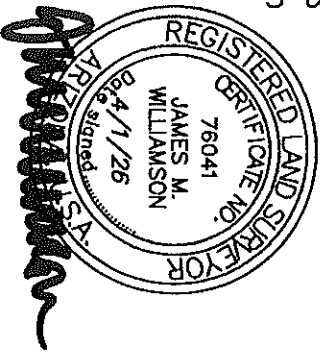
EXHIBIT "A-2"

DEPICTION OF TEMPORARY DRAINAGE
EASEMENT ABANDONMENT OVER A PORTION OF
993 E. PECOS ROAD
CHANDLER, ARIZONA 85225



NOT TO SCALE

LINE	BEARING	DISTANCE
L1	S 00°27'32" E	114.00'
L2	N 89°44'01" E	14.00'



SUPERIOR
SURVEYING SERVICES, INC.

2122 W. Lone Cactus Dr., Ste. 11
Phoenix, AZ 85027
623-869-0223 (office)
623-869-0726 (fax)
www.superiorsurveying.com
info@superiorsurveying.com

DATE: 4/1/26

JOB NO.: 202603147