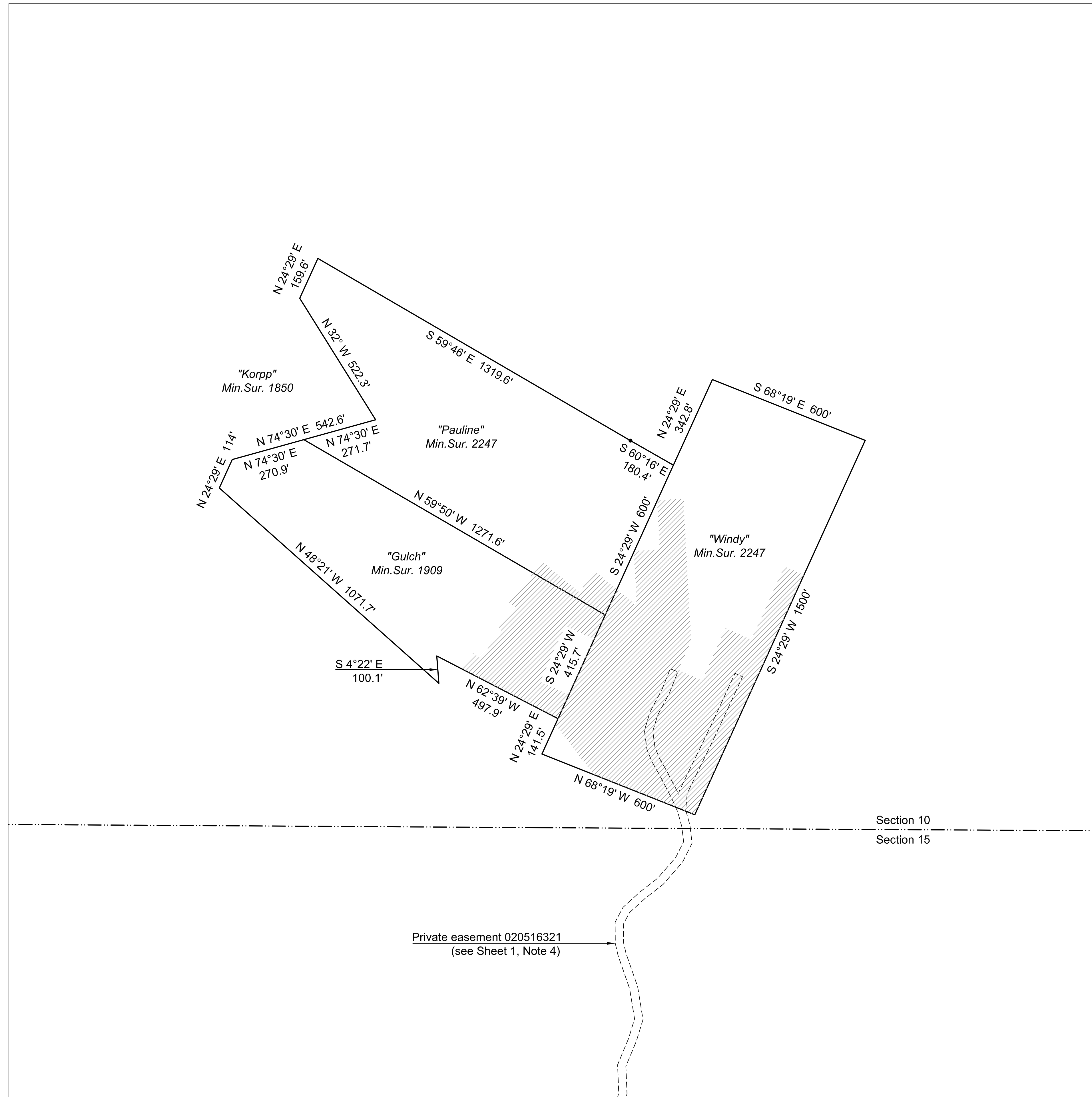


ABANDONMENT PLAT WINWOOD ADDITION TO BISBEE

APPROVAL:
 The Cochise County Board of Supervisors does hereby certify that this plat was approved on the ____ day of _____, 2013 pursuant to Resolution 13-____.
 By _____ Attest _____
 Chairman Clerk of the Board

RECORDING:
 This plat was filed for record at the request of Cochise County on this ____ day of _____, 2013 in Book ____ of Maps & Plats, Page ____ Fee # ____
 Cochise County Recorder

- NOTES:**
- This plat abandons the subdivision known as Winwood Addition to Bisbee and recorded in Book 1 of Maps & Plats at Page 134 as filed in the office of the Cochise County Recorder.
 - All Lot lines as set forth on Sheet 2 of 2 of this plat are hereby extinguished.
 - All public rights-of-way were previously vacated/abandoned pursuant to Resolution 87-86 recorded as instrument number 870821367, Resolution 94-86 recorded as instrument number 940924837, Resolution 96-25 recorded as instrument number 960305807 and Resolution 02-44 recorded as instrument number 020516319 as filed in the office of the Cochise County Recorder. All private rights-of-way which may have been retained for the benefit of the lots of the Winwood Addition as set forth on Sheet 2 of 2 of this plat are hereby extinguished.
 - A known private access easement was granted in conjunction with Resolution 02-44 and recorded as instrument number 020516321 as filed in the office of the Cochise County Recorder. Other private easements known or unknown may have been granted. This action to abandon the Winwood Addition to Bisbee does not affect private easements or other agreements between private parties.
 - Rights-of-way or easements for existing public utilities shall continue as they existed prior to abandonment.



LEGEND:

- Parcel line
- Winwood Addition to Bisbee, which is being abandoned
- Section line
- Private easement 020516321, not affected by this action (see Sheet 1, Note 4)

SHEET INDEX:
 Sheet 1. - Notes, depiction of subject property after abandonment action.
 Sheet 2. - Depiction of Winwood Addition to Bisbee, which is being abandoned.

ABANDONMENT PLAT WINWOOD ADDITION TO BISBEE




DEPICTION OF SUBJECT PROPERTY AFTER ABANDONMENT ACTION

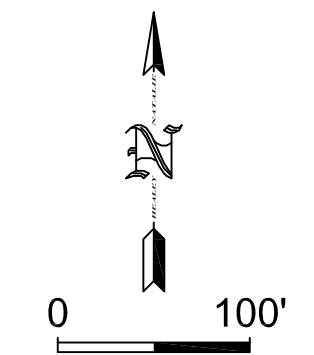
Located in Section 10, Township 23 South, Range 24 East, G.&S.R.M., Cochise County, Arizona

ABANDONMENT PLAT WINWOOD ADDITION TO BISBEE



LEGEND:

-  Extinguished Lot line
(see Sheet 1, Note 2)
-  Extinguished Easement
(see Sheet 1, Note 3)
-  Mining Claim line



**ABANDONMENT PLAT WINWOOD
ADDITION TO BISBEE**

**DEPICTION OF WINWOOD
ADDITION TO BISBEE, WHICH IS
BEING ABANDONED**

Located in Section 10, Township 23
South, Range 24 East, G.&S.R.M.,
Cochise County, Arizona