

EXHIBIT A

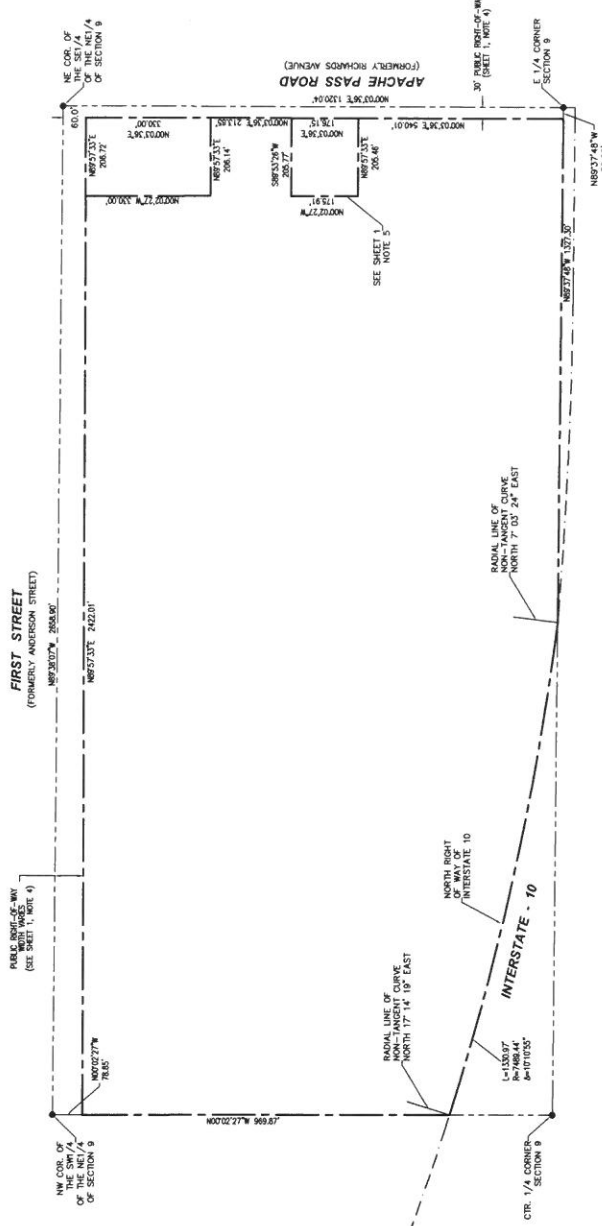
ABANDONMENT PLAT RICHARDS ADDITION TO BOWIE TOWNSITE

APPROVAL:
 THE STATE BOARD OF SUPERVISORS DOES HEREBY
 CERTIFY THAT THIS PLAT WAS APPROVED ON THE _____ DAY
 OF _____, 2017 PURSUANT TO RESOLUTION
 NO. _____.
 BY: _____ CHAIRMAN _____ ATTNEY _____ CLERK OF THE BOARD

RECORDING:
 STATE OF ARIZONA }
 COUNTY OF COCHISE } SS
 THIS PLAT WAS FILED FOR RECORD AT THE REQUEST OF COCHISE
 IN BOOK _____ OF MAPS PLATS AT PAGE _____, 2017
 FEE NO. _____
 COCHISE COUNTY RECORDER/DEPUTY COUNTY RECORDER

LEGEND:
 [---] SECTION OR 1/4 LINE
 [---] PARCEL LINE
 [---] RIGHT OF WAY LINE

SHEET INDEX:
 SHEET 1 UNDERLIES PORTION OF SUBJECT
 PROPERTY AFTER ABANDONMENT ACTION
 SHEET 2 DEPICTION OF RICHARDS ADDITION TO
 BOWIE, WHICH IS BEING ABANDONED.



**ABANDONMENT PLAT RICHARDS
 ADDITION TO BOWIE TOWNSITE
 DEPICTION OF SUBJECT
 PROPERTY AFTER
 ABANDONMENT ACTION**

LOCATED IN THE NORTHEAST 1/4 OF SECTION 9,
 TOWNSHIP 13 SOUTH, RANGE 28 EAST, G. & S. R.,
 COCHISE COUNTY, ARIZONA.

NOTES:

1. THIS PLAT ABANDONS THE STREETS AND ALLEYS IN BOWIE AND IS RECORDED IN BOOK 2 OF MAPS PLATS AT COUNTY RECORDER.
2. ALL STREETS AND ALLEYS AS SET FORTH ON SHEET 2 OF 2 OF THIS PLAT ARE HEREBY ABANDONED.
3. RIGHTS OF WAY OR EASEMENTS FOR EXISTING PUBLIC UTILITIES SHALL CONTINUE AS THEY EXISTED PRIOR TO ABANDONMENT.
4. FIRST STREET AND APACHE PASS ROAD ARE NECESSARY FOR PUBLIC ROAD PURPOSES AND ARE ABANDONMENT ACTION.
5. PARCEL LINES ADJOINING BLOCK ARE BASED ON RIGHT-OF-WAY CONVEYANCES CREATED PER THE OFFICE OF THE RECORDER, COCHISE COUNTY, ARIZONA AND ESTABLISHED PURSUANT TO THE ABANDONMENT ACTION CONTAINED HEREIN.

ALTA LAND SURVEY, INC.

3800 E. PIMA STREET, SUITE 130
 TUCSON, ARIZONA 85712
 (520) 390-8051

NO.	R. E. L. S. L. O. N. S.	DESCRIPTION	BY	DATE
1				
2				
3				
4				

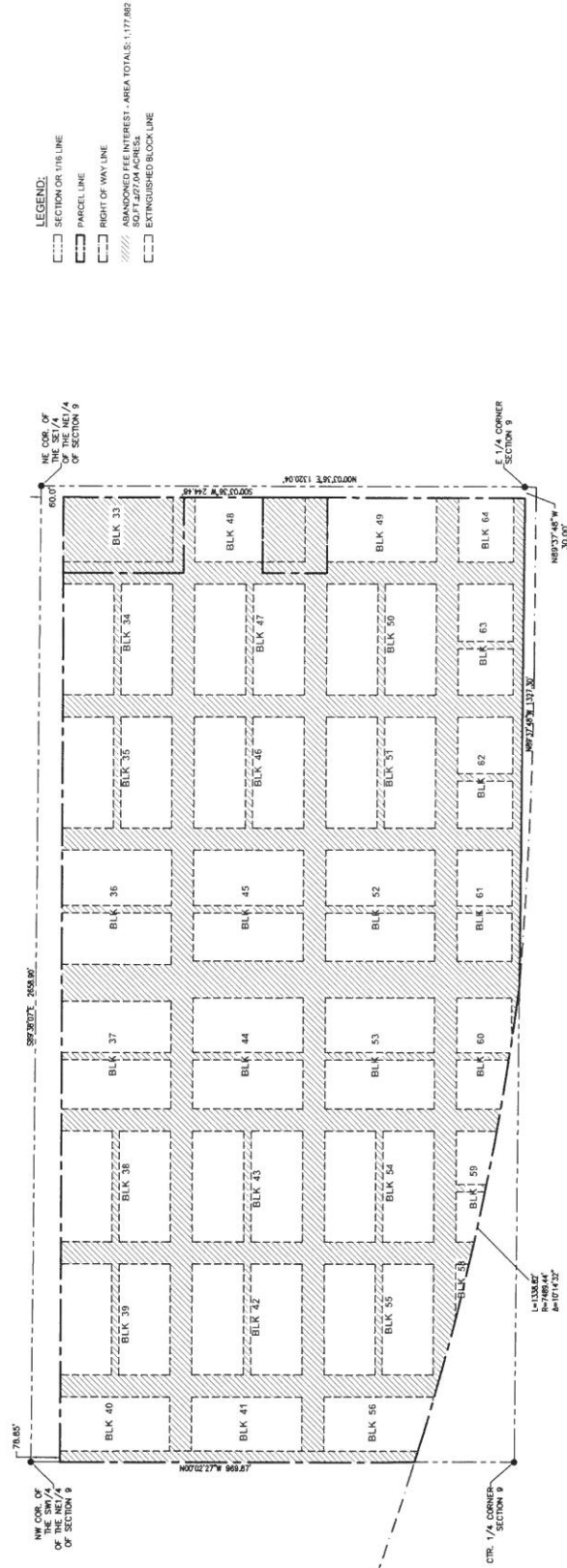
FEE# _____ BOOK _____ SURVEY PAGE _____

PORTION OF SECTION 9
 TOWNSHIP 13 SOUTH, RANGE 28 EAST
 G1A & SALT RIVER MERIDIAN, COCHISE COUNTY, ARIZONA

ABANDONMENT PLAT RICHARDS ADDITION
 BOOK 2 PAGE 107 OF PLAT MAPS
 TOWN OF BOWIE, COCHISE COUNTY, ARIZONA
 PROJECT 17-111
 Drawn By: _____
 Checked By: _____
 Date: 4/26/17
 Sheet: 1 of 2



ABANDONMENT PLAT RICHARDS ADDITION TO BOWIE TOWNSITE



LEGEND:
 [---] SECTION OR 1/4 LINE
 [---] PARCEL LINE
 [---] RIGHT OF WAY LINE
 [---] ABANDONED FEE INTEREST - AREA TOTALS: 1,177.862
 50.14, 67.04 ACRES.
 [---] EXTINGUISHED BLOCK LINE

ABANDONMENT PLAT RICHARDS ADDITION TO BOWIE TOWNSITE
 DEPICTION OF RICHARDS ADDITION TO BOWIE, WHICH IS BEING ABANDONED

LOCATED BY THE NORTHEAST 1/4 OF SECTION 9,
 TOWNSHIP 13 SOUTH, RANGE 28 EAST, G. & S. R.
 M., COCHISE COUNTY, ARIZONA.

ALTA LAND SURVEY, INC. SURVEYING, ENGINEERING, PLANNING & CONSULTING 2830 E. PIMA STREET, SUITE 1300 TUCSON, ARIZONA 85712 (520) 398-8651		R. E. L. S. L. O. N. S. DESCRIPTION NO. 1 2 3 4		FEE# _____ BOOK _____ SURVEY/PAGE _____		PORTION OF SECTION 9 TOWNSHIP 13 SOUTH, RANGE 28 EAST G. & S. R. SALT RIVER MERIDIAN, COCHISE COUNTY, ARIZONA		ABANDONMENT PLAT RICHARDS ADDITION BOOK 2 PAGE 107 OF PLAT MAPS TOWN OF BOWIE, COCHISE COUNTY, ARIZONA PROJECT 17-111 Drawn By: _____ Checked By: _____ Date: 5/23/77 Sheet: 2 of 2	
-------------------------------------------------------------------------------------------------------------------------------------------------------	--	----------------------------------------------------------------	--	-----------------------------------------------	--	---------------------------------------------------------------------------------------------------------------------	--	----------------------------------------------------------------------------------------------------------------------------------------------------------------------------------------------------------	--