



Executive  
Summary Map

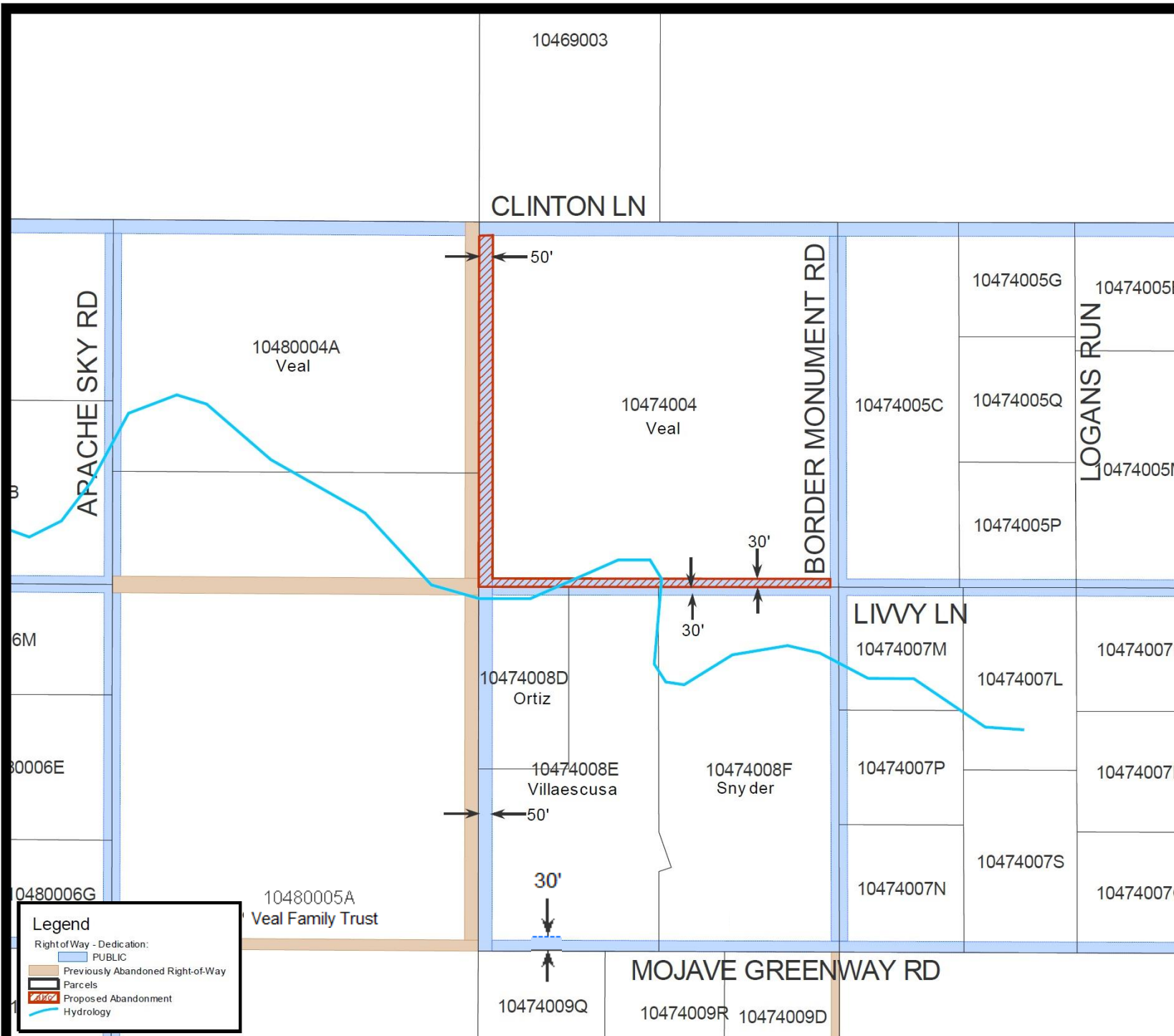
Proposed  
Abandonment of  
certain easements  
in Palominas  
Ranch

Section 18  
Township 24 South  
Range 22 East

This map is a product of the  
Cochise County GIS  
Information Technology Dept.



0' 1" = 500'



**Legend**

Right of Way - Dedication:

- PUBLIC
- Previously Abandoned Right-of-Way

Parcels

Proposed Abandonment

Hydrology