

COCHISE COUNTY

Small Municipal Separate Storm Sewer System (MS4) Ordinance

Presented by: Jackie Watkins, P.E.
County Engineer



Public Programs...Personal Service

COCHISE COUNTY

Brief History

- 1972 Congress passed the Clean Water Act (CWA)
- CWA required Environmental Protection Agency (EPA) to regulate discharge of pollutants to surface waters
- EPA established rules for National Pollutant Discharge Elimination System (NPDES) permits
- 1990 regulations for stormwater discharges Phase I & Phase II
- 1992 EPA started issuing permits
- 2002 Arizona assumed primacy to implement the NPDES permit program from EPA
- Arizona Department of Environmental Quality (ADEQ) administers the program



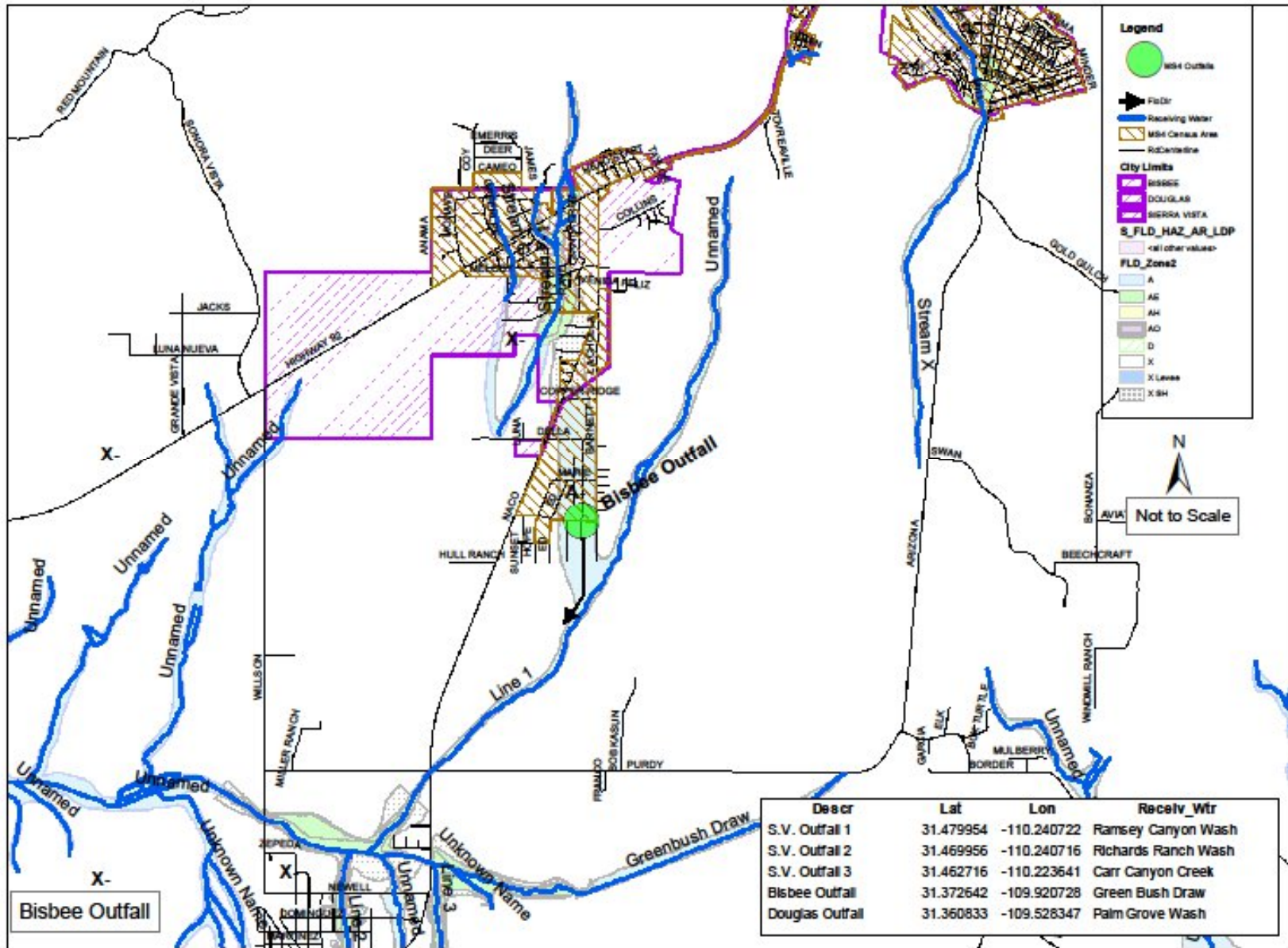
COCHISE COUNTY

ADEQ NPDES MS4 Permit

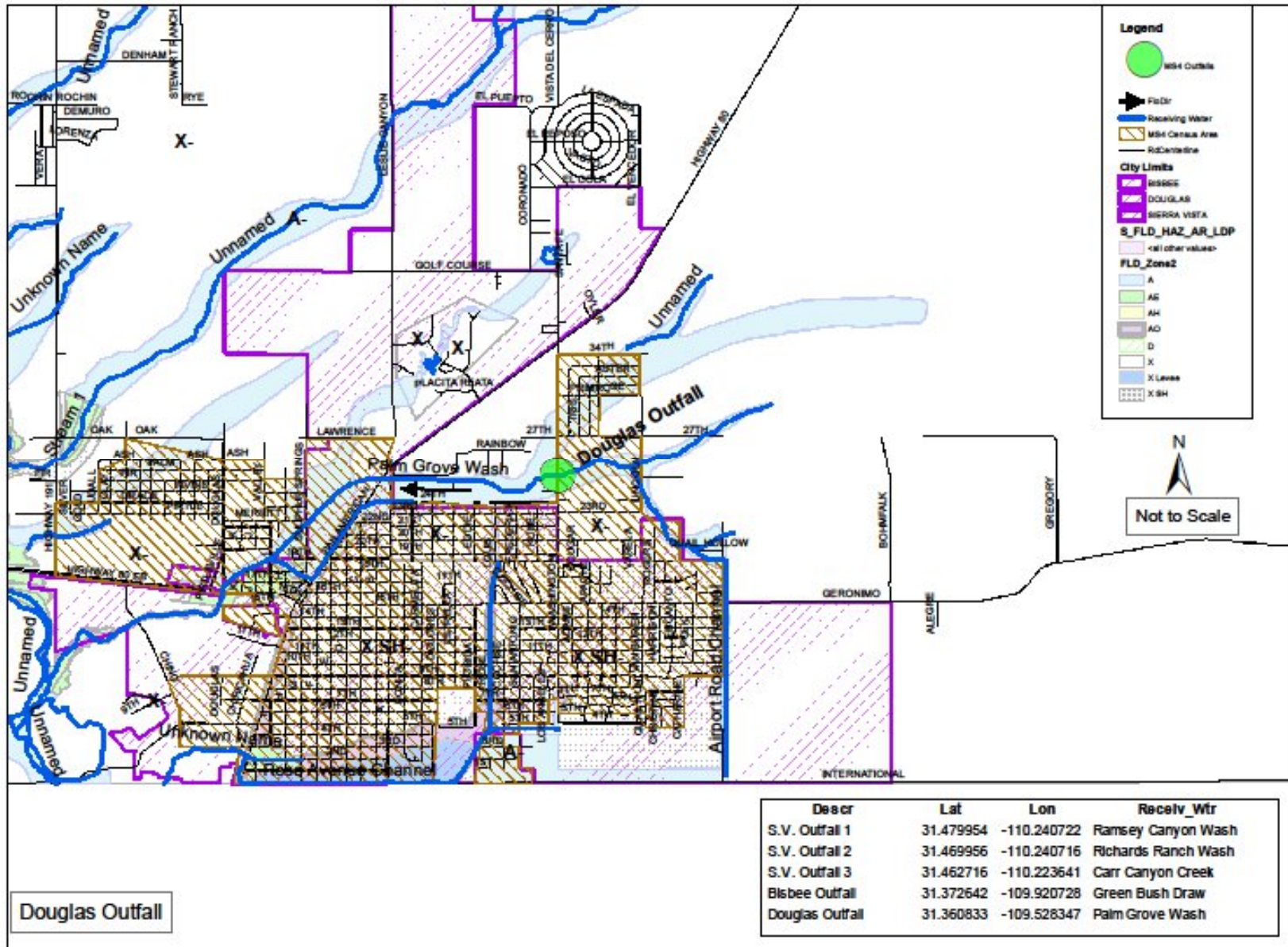
- NPDES regulates stormwater discharge associated with industrial, construction, concentrated animal feed operations (CAFO) and municipal areas.
- Municipal Separate Storm Sewer System (MS4) means a conveyance system including roads with drainage systems, streets, catch basins, curbs, gutters, roadside ditches, man-made channels or storm drains.
- 2010 census portions of un-incorporated urbanized area of County determined to be a small MS4 by ADEQ
- September 30, 2016 County obtained ADEQ NPDES Permit AZG2016-002
- Permit fee \$5,000 year
- MS4 area Bisbee, Douglas, Sierra Vista



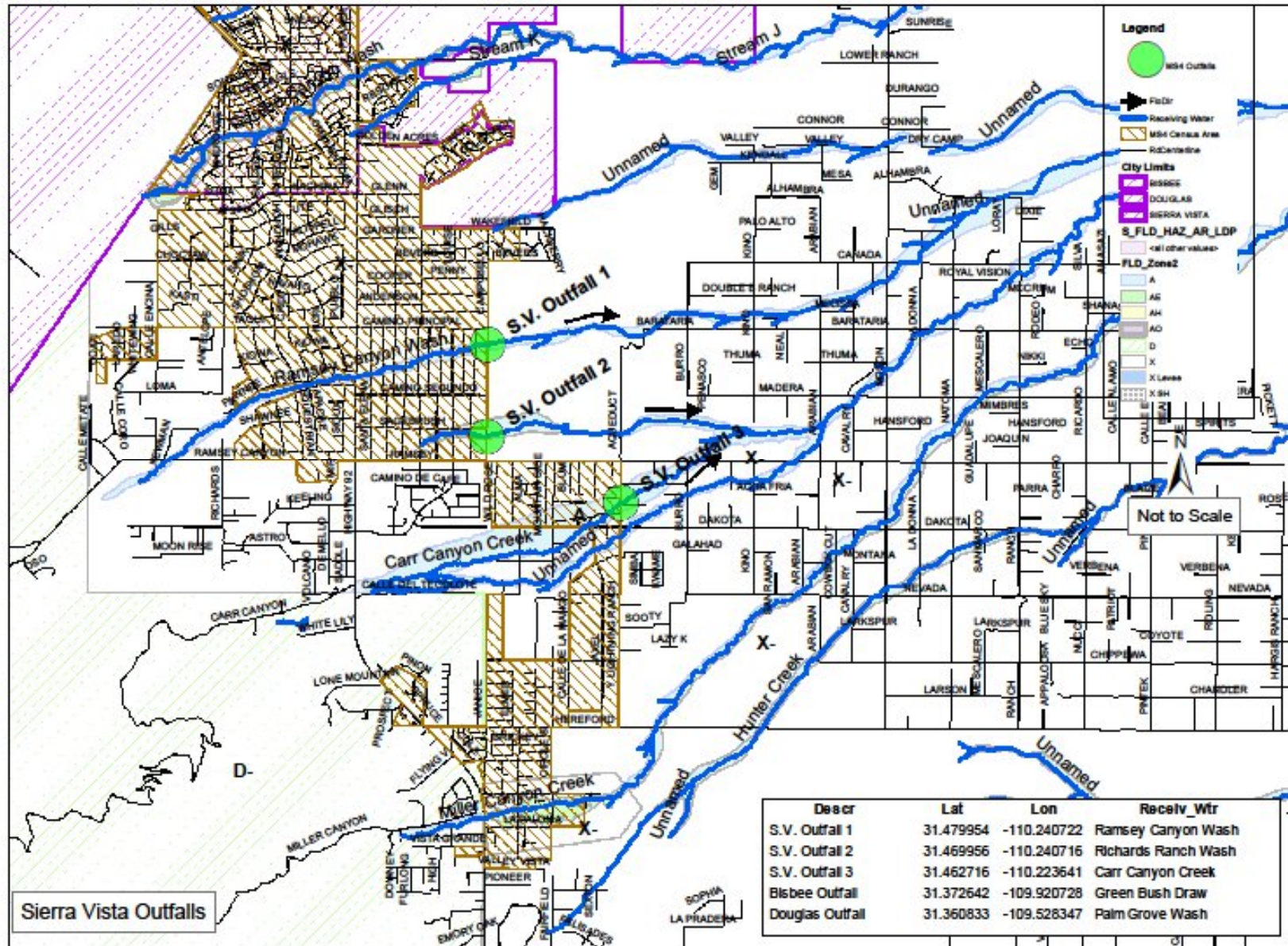
COCHISE COUNTY



COCHISE COUNTY



COCHISE COUNTY



COCHISE COUNTY

County ADEQ MS4 Permit Requirements

- Stormwater Program Enforcement (Stormwater Ordinance)
- Storm Sewer System Mapping
- Stormwater Management Program
- Effluent Limitations
- Program Assessment, Recordkeeping and Reporting



COCHISE COUNTY

Stormwater Program Enforcement

- Within 24 months of MS4 permit adopt and implement an **ordinance** to control pollutant discharges into **County MS4**
- Enforcement Requirements
- Enforcement Response Plan



COCHISE COUNTY

Cochise County Stormwater Ordinance

- Non-Stormwater Discharges
- Commercial, Industrial or Construction Activity Discharges
- Violations, Enforcement, Penalties and Authority
- Monitoring of Discharges
- Post-Construction Stormwater Management

