

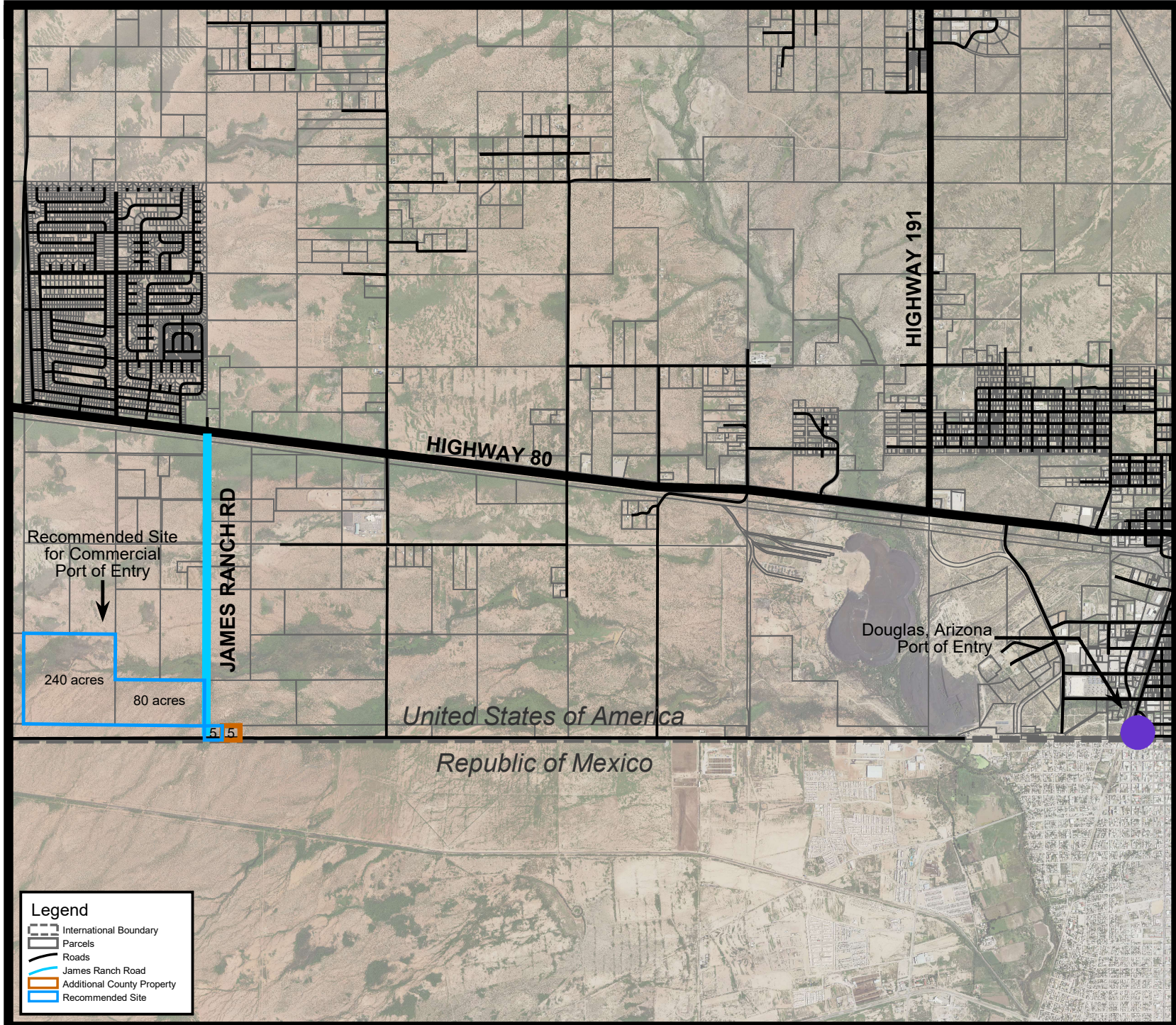


James Ranch Rd

This map is a product of the Cochise County GIS Information Technology Dept.



0' 1" = 4000'



Recommended Site for Commercial Port of Entry

240 acres

80 acres

JAMES RANCH RD

HIGHWAY 191

HIGHWAY 80

Douglas, Arizona Port of Entry

United States of America

Republic of Mexico

Legend

- International Boundary
- Parcels
- Roads
- James Ranch Road
- Additional County Property
- Recommended Site