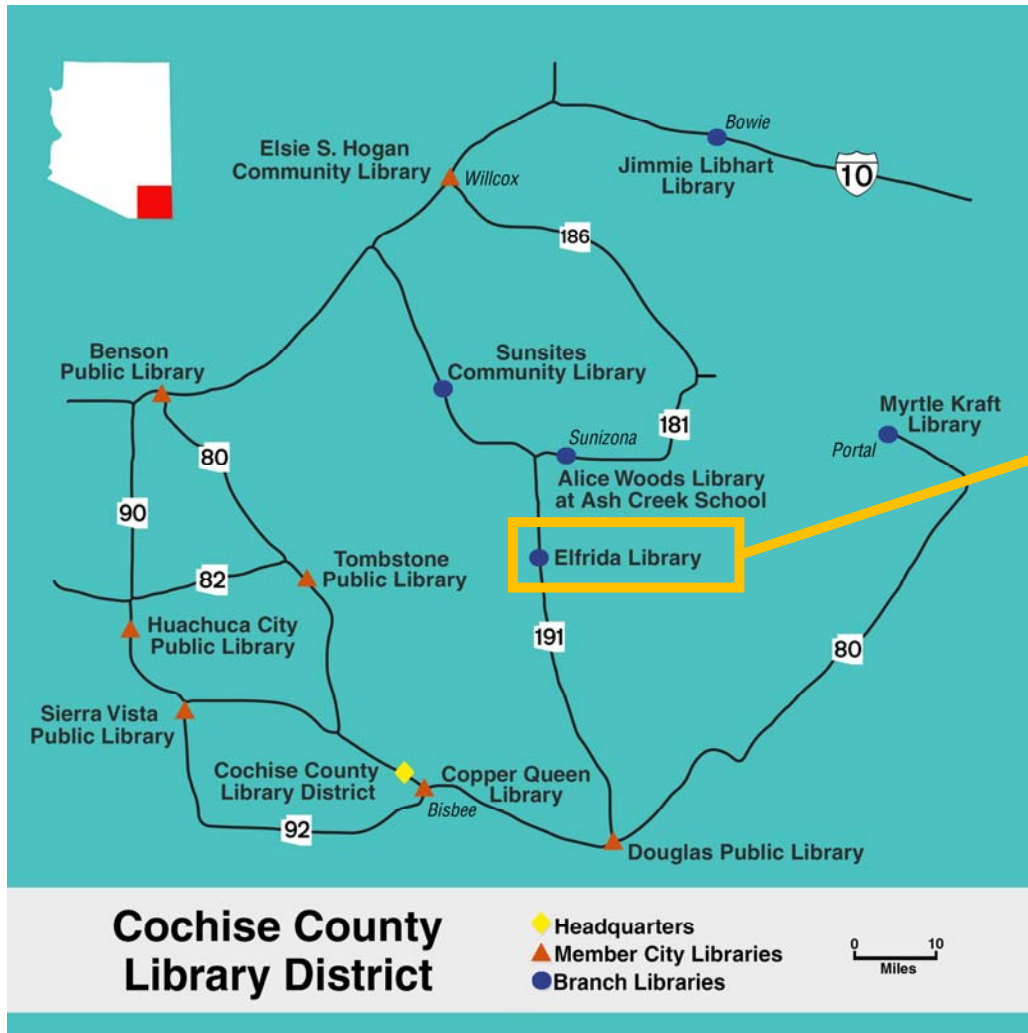




# Cochise County Library District



The Elfrida Library is one of five rural branch locations operated by the Library District:

- Bowie
- Elfrida
- Portal
- Sunizona
- Sunsites

The Library District also provides support services for the seven municipal libraries in Cochise County, and offers some services directly to residents countywide.



*Bowie*



*Elfrida*



*Portal*

The Bowie library building is owned by Cochise County.

The other four branch locations are owned by community partners.



*Sunizona*



*Sunsites*



The Elfrida Library opened in 2003. It is one of the Library District's busiest branches, averaging **425 visits** and **950 checkouts** per month in 2018.

The Elfrida Library building is owned and maintained by the Elfrida Citizens Alliance (ECA). The ECA would like to donate the building to Cochise County, while donating the adjacent Community Center to the Elfrida Fire District.



**At a March work session, the Board of Supervisors directed the Library District to:**

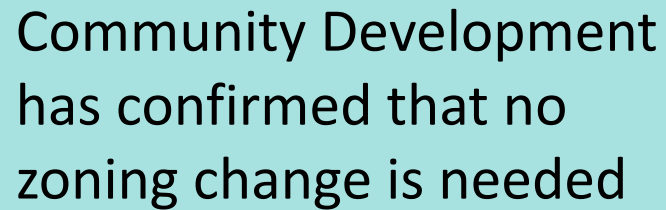
- Research any zoning issues, and have the parcel surveyed
- Gather cost information for improvements to the building



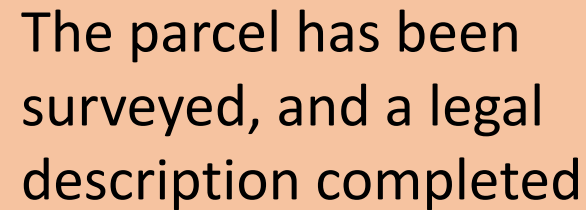
## Since March 2019



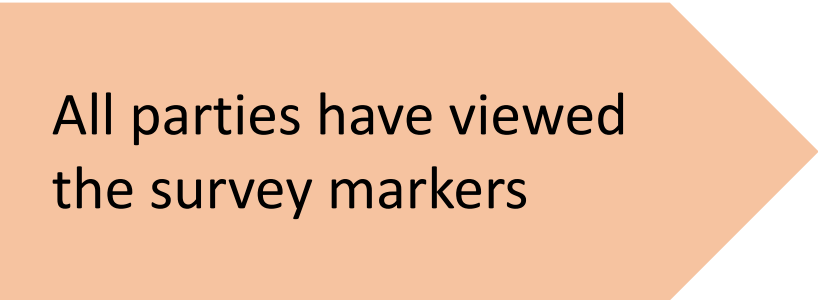
Community Development has confirmed that no zoning change is needed



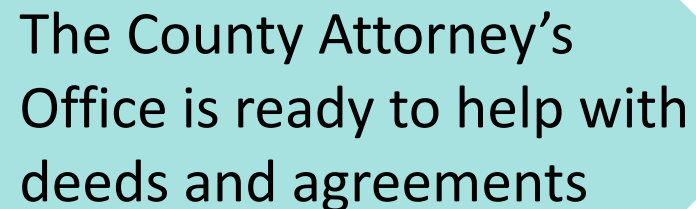
The parcel has been surveyed, and a legal description completed



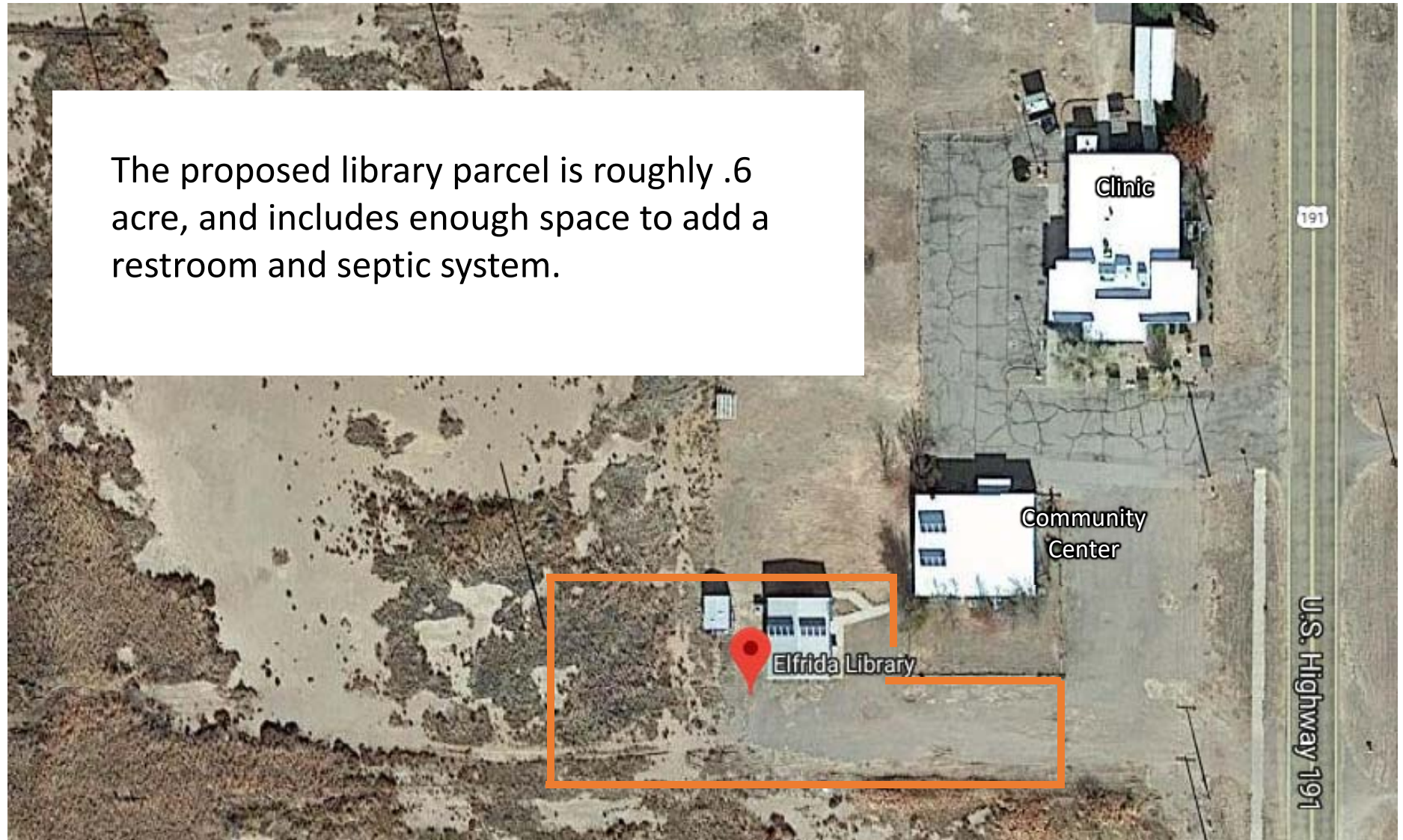
All parties have viewed the survey markers



The County Attorney's Office is ready to help with deeds and agreements



The proposed library parcel is roughly .6 acre, and includes enough space to add a restroom and septic system.

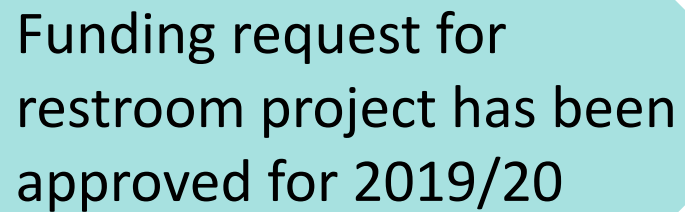


An aerial photograph of a residential neighborhood is shown, with a teal-colored rectangular overlay in the center. The overlay contains the text 'Building improvements' in white, bold, sans-serif font. A white diagonal line is positioned to the left of the text. The map shows various streets including W Anthony Ln, W Swisshelm Trl, and W Baptist Church Rd. Numerous small, light-colored rectangular shapes are scattered across the map, representing individual buildings or lots. The teal overlay is semi-transparent, allowing the map details to be seen through it.

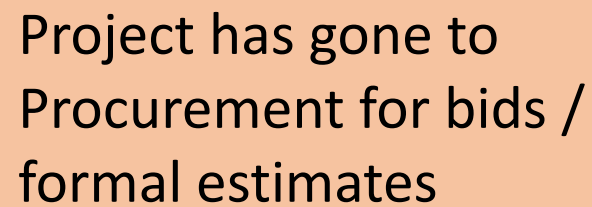
# Building improvements



**Since March 2019**



Funding request for  
restroom project has been  
approved for 2019/20



Project has gone to  
Procurement for bids /  
formal estimates



The Library District has made other improvements in Elfrida as this project has moved forward:

- **Updated children's and teen collections**
- **Improved furniture, shelving, and signage**



New materials  
purchased with  
grant funds

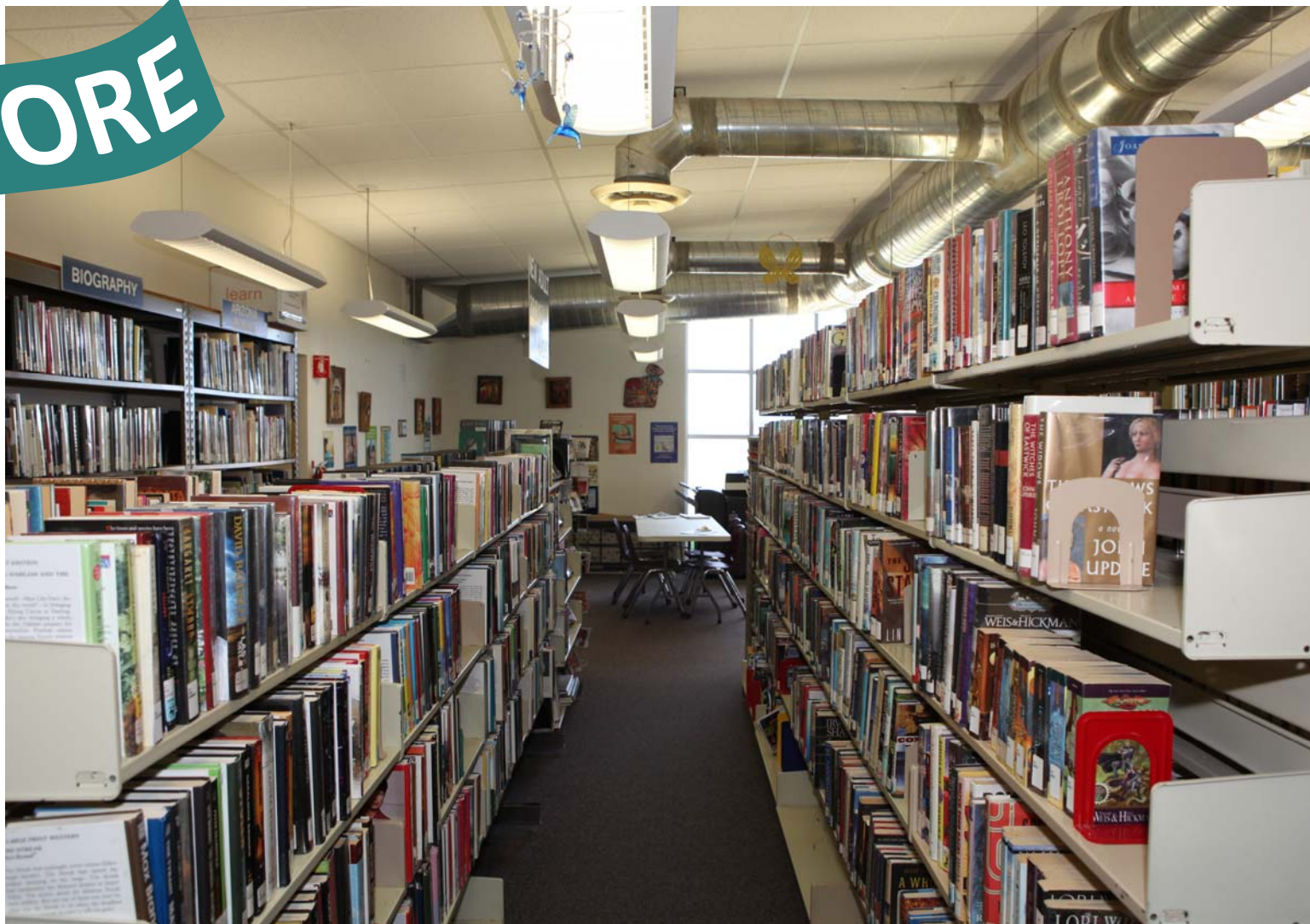
**BEFORE**



**AFTER**



**BEFORE**





**AFTER**





**BEFORE**



**AFTER**

**FICTION**

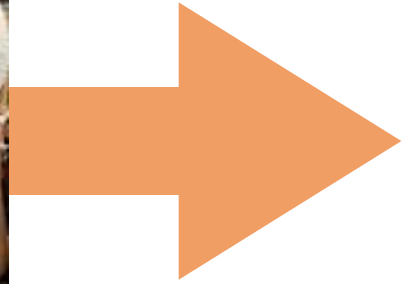
**FICTION**

## **Proposed next steps:**

- Proceed with deeds and agreements
- Seek formal approval from BOS

***Questions?***

***Direction?***



**Thank you!**