

Palominas

Basin Trail  
Three Canyons





Palominas Recharge Site

E Cll Tejas

E Cline

S Vista

S Corgi Ln

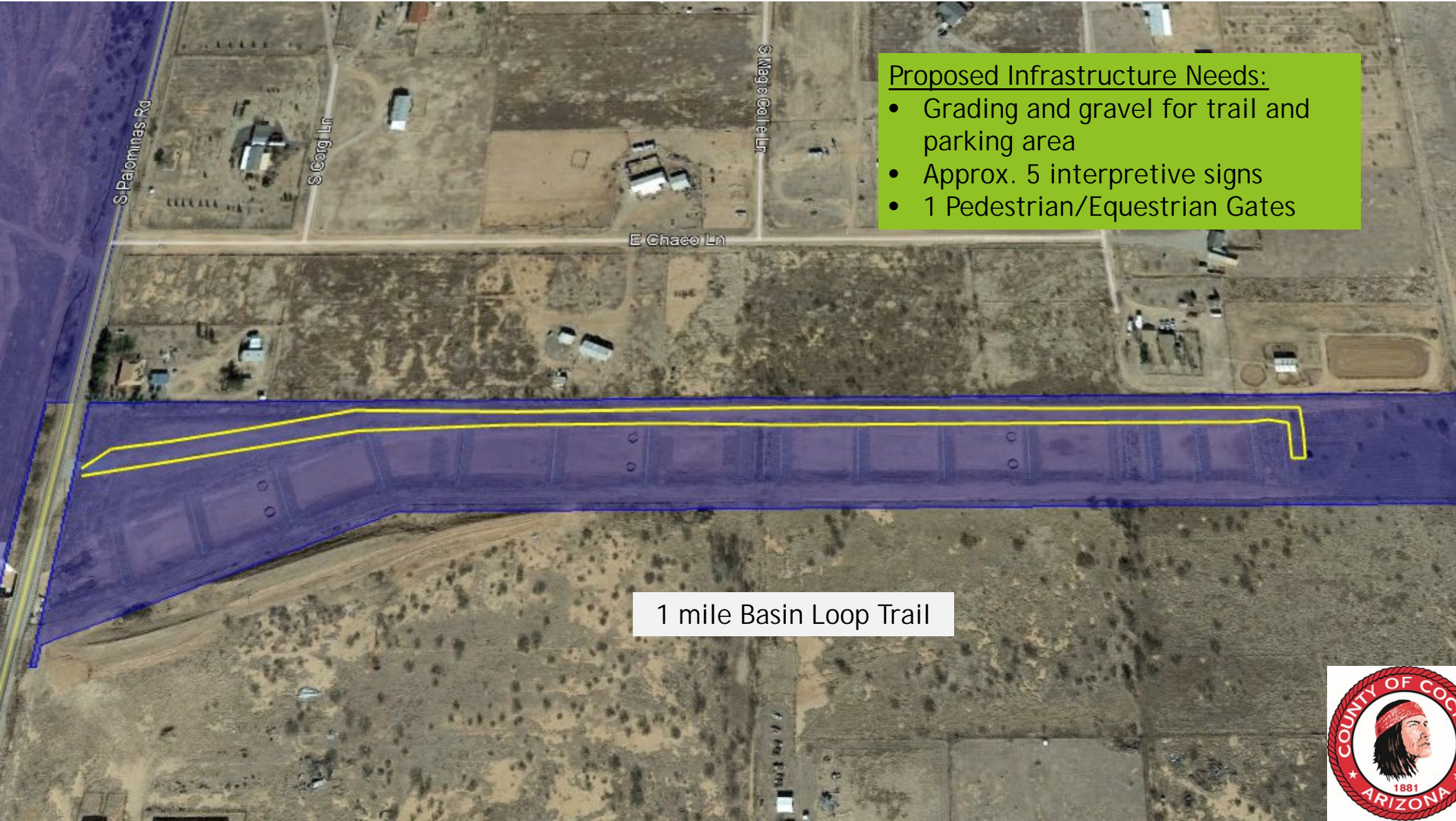
S Magic Collier Ln

SBLM Rd

92

Palominas





S Palominas Rd

S Gargi Ln

S Margie Collette Ln

E Chaco Ln

- Proposed Infrastructure Needs:
- Grading and gravel for trail and parking area
  - Approx. 5 interpretive signs
  - 1 Pedestrian/Equestrian Gates

1 mile Basin Loop Trail



## Proposed Benefits

1. Provides a recreational amenity to community
2. Educates public on the recharge project and elevates the County's profile in its role as a member of the Cochise Conservation and Recharge Network (CCRN)
3. Funding opportunities available through State grants.
4. Supports and fosters community health as part of County's Healthy Communities Initiative
5. Supports County's Strategic Plan:

Priority 1

Economic Development Countywide

Marketing (Economic Development and Tourism)

Priority 2

Promote Environmental Issues

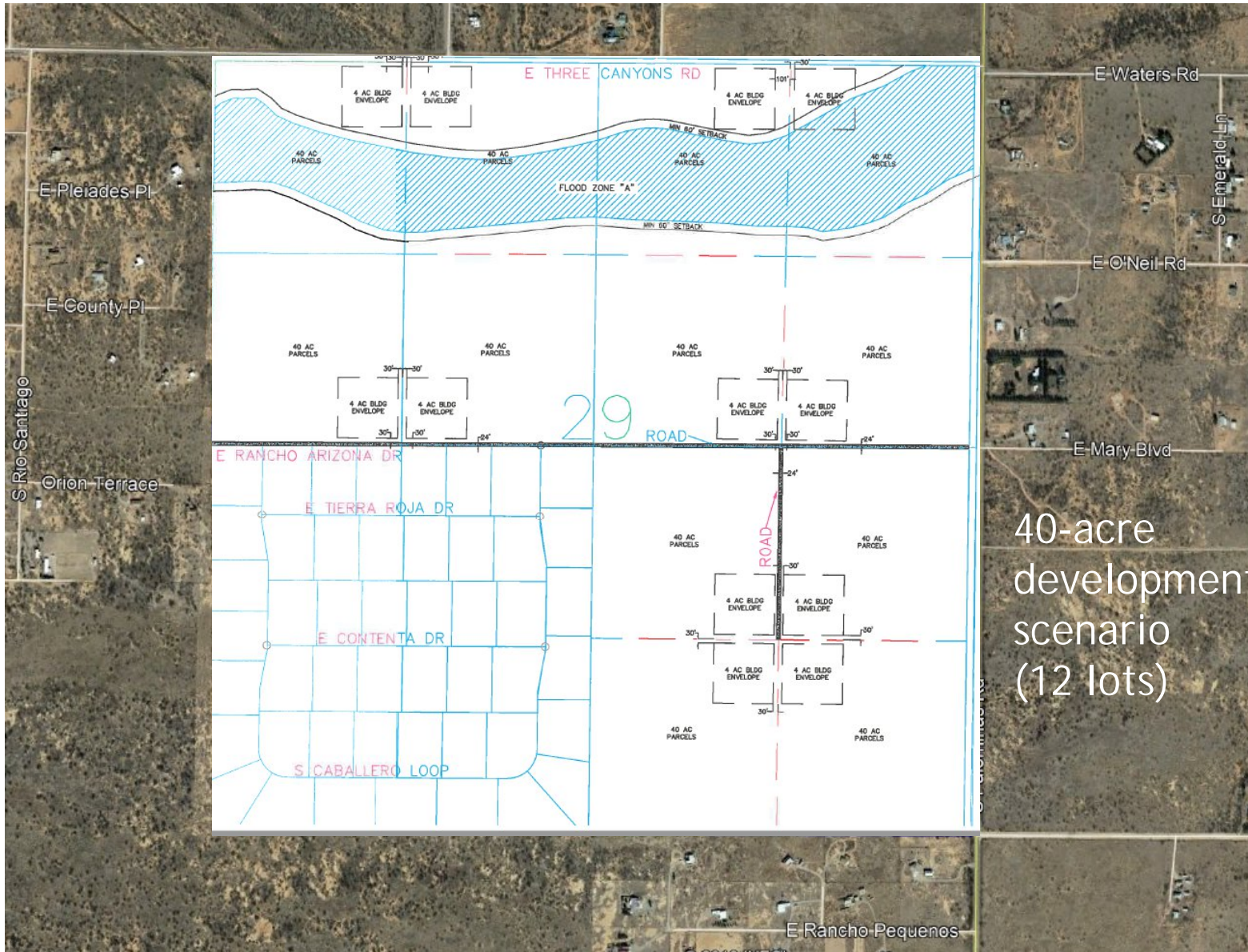
Water Conservation

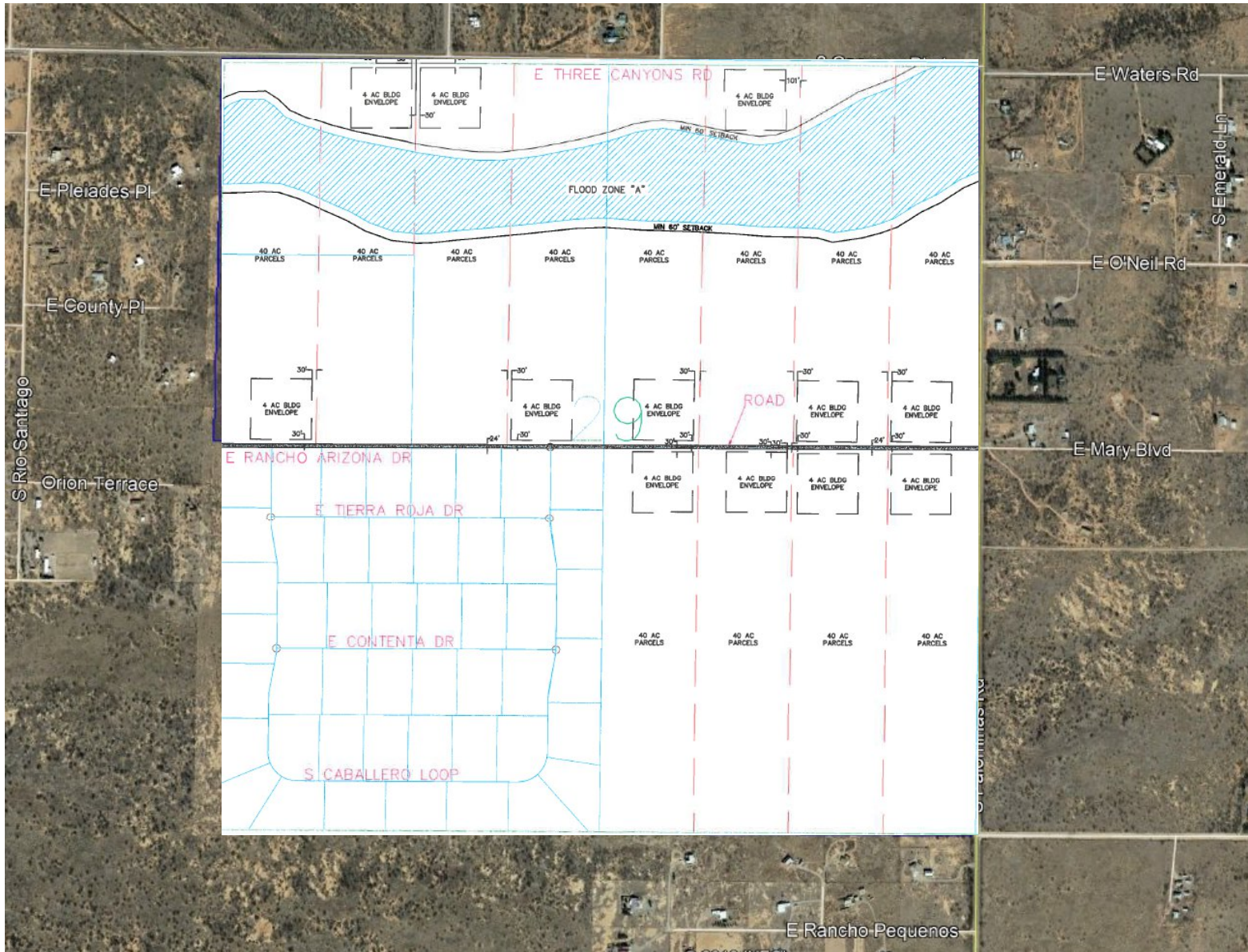
San Pedro Riparian Area

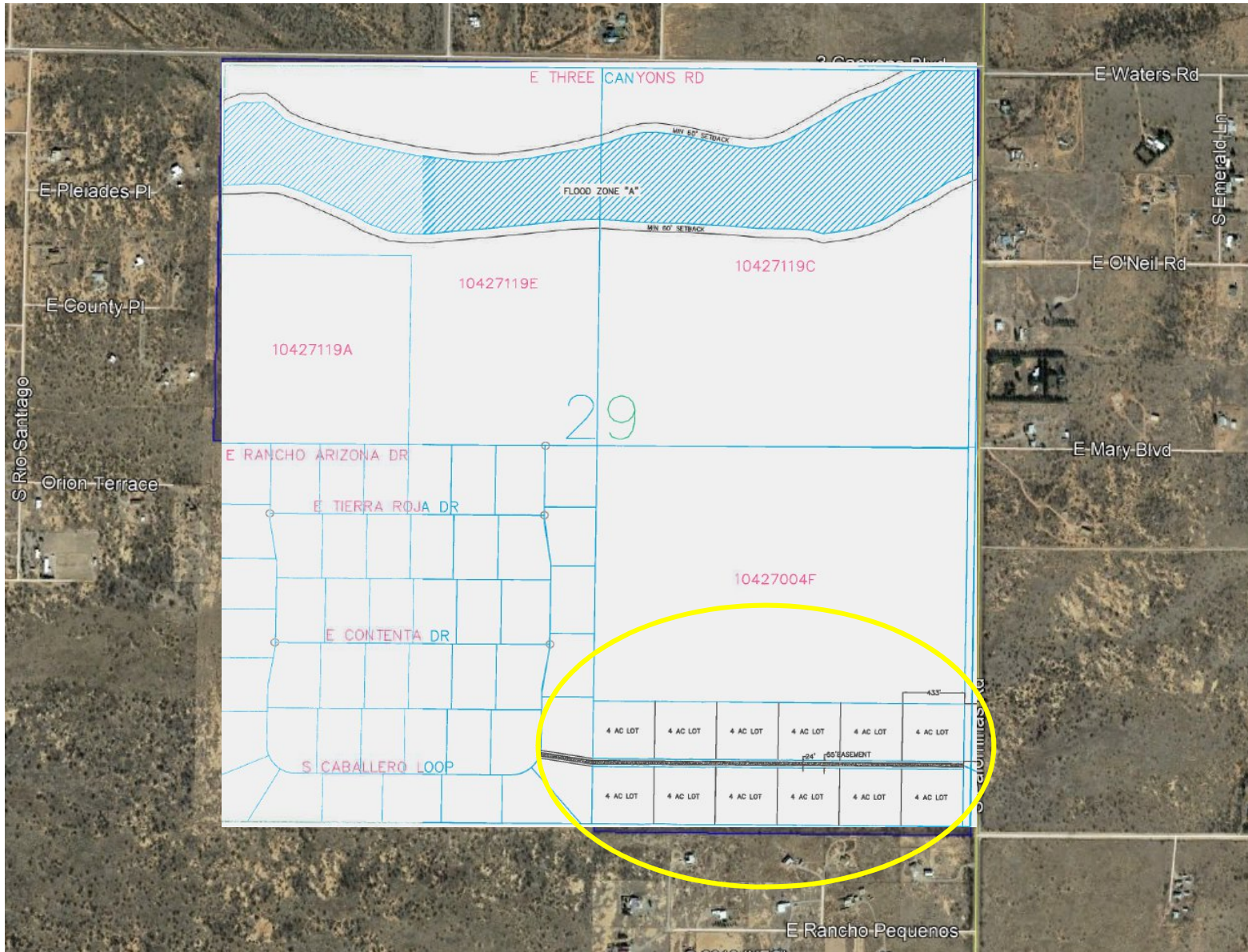
Support Access to Public Lands











## 4-acre Lot Development Scenario (12 lots)

- Concentrates lots in southern portion of parcel leaving more area for active recharge and open space
- Less infrastructure needed for access and water
- Less road maintenance
- Lot size is compatible with adjacent Rancho Arizona subdivision

