



COCHISE COUNTY FLOOD CONTROL DISTRICT

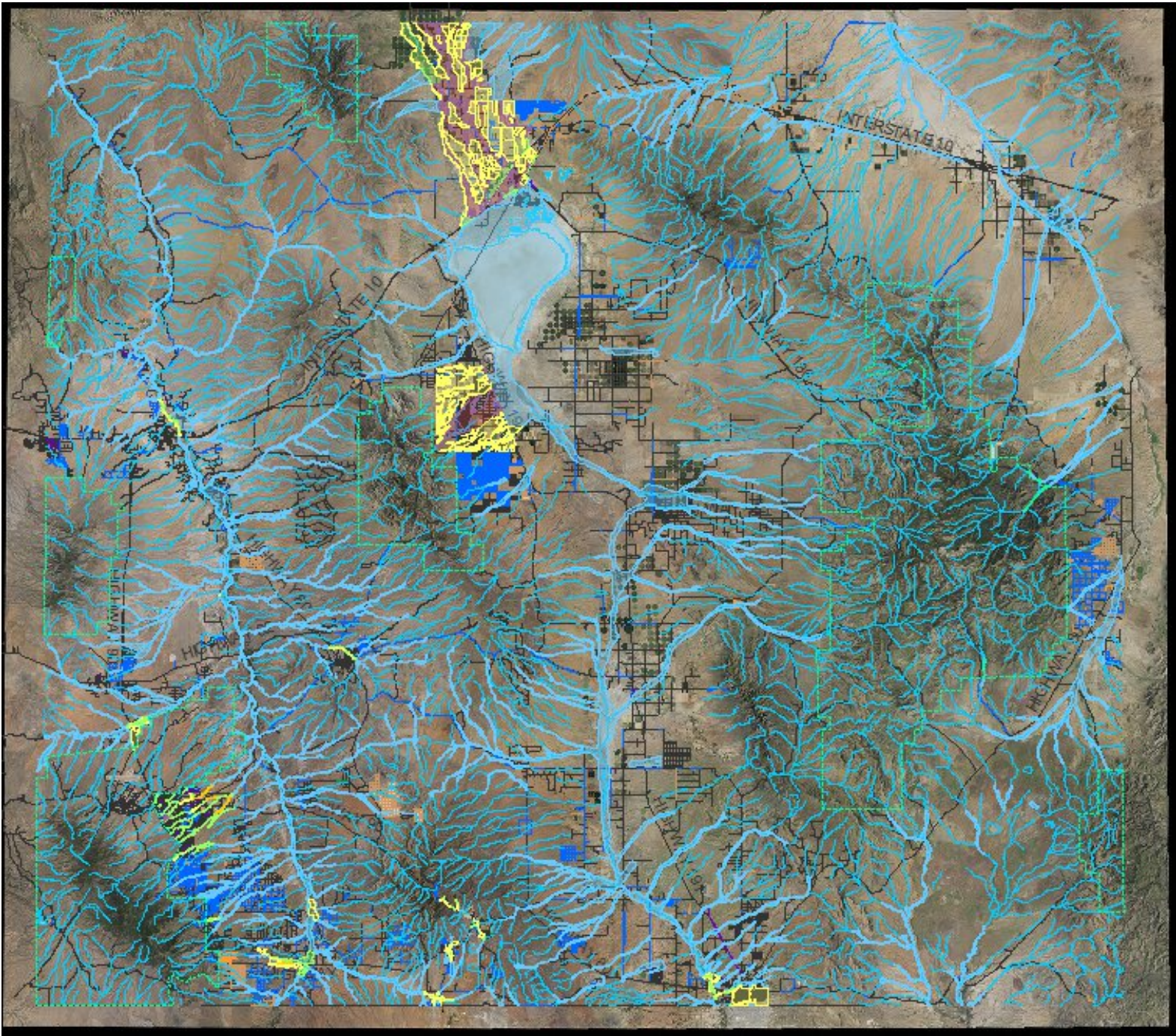
2019 UPDATES

December 17, 2019





- LiDAR Survey
- FCD Permits & Setbacks
- District Projects
 - Flood Control / Recharge
 - Coyote Wash
 - Three Canyons
 - Palominas
 - Bisbee Effluent
 - Bay Acres Design Concept Report
 - Willow Lakes Mitigation Channel
 - Leslie Canyon Water Users Association Pond



Engineering & Natural Resources

Palominas Recharge Interpretive Path



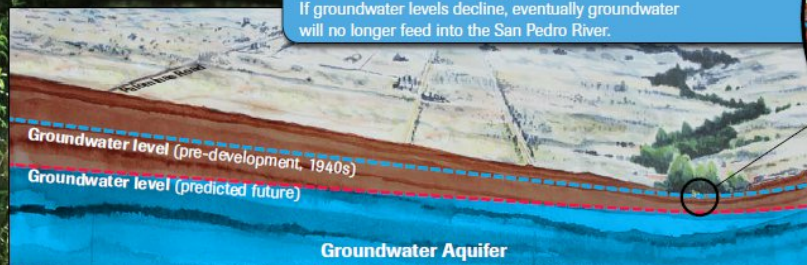
Palominas Recharge Project develops water solutions for the San Pedro Valley

Small but important, the Palominas Recharge Project is primarily a laboratory to test and monitor the best ways to get the most water into the ground. Through frequent monitoring, Cochise County is gathering information about the volume and rate of water recharged (absorbed deep into the ground) through the basin to the west and the recharge cells to the east. The project is also designed to reduce water loss to evaporation and prevent mosquito-

attracting pooled water. The information gained from the Palominas Recharge site will guide the design and construction of other larger recharge projects along the San Pedro River in the future. The goal of these recharge projects is to maintain a flowing San Pedro River.

Losing Stream (drying)

If groundwater levels decline, eventually groundwater will no longer feed into the San Pedro River.



Near-stream recharge projects today will help prevent additional reaches of the San Pedro River from going dry.

Gaining Stream (flowing)

By detaining stormwater and allowing it to slowly percolate into the aquifer, we can help maintain year-round flow in this part of the river.



Palominas Recharge Project controls floods & helps the San Pedro River!

The water that is used for homes, businesses, and agriculture is the same water that also keeps the San Pedro River flowing and its habitat healthy. The water comes from a large, but not unlimited, underground feature called a groundwater aquifer. If the supply of water in the regional aquifer continues to decline, the San Pedro will have less flow. This project will recharge, or add, stormwater exactly where it's needed most, close to the river, where it will

protect the river from becoming disconnected from one of its key sources: groundwater.

A network of recharge projects along the length of the San Pedro will help keep the river alive and flowing far into the future. Along with other water saving solutions, recharge helps manage this precious resource in ways that will provide water for our needs and the river for many years to come.

