



The image shows a landscape with mountains in the background and a residential area in the foreground. Overlaid on the image is the title "Sierra Vista Metropolitan Planning Organization" in a large, white, serif font. In the bottom right corner, there is a triangular logo for the Sierra Vista Metropolitan Planning Organization (MPO). The logo is divided into four colored sections: a green section with a walking figure, a blue section with a car icon, a purple section with a car icon, and a red section with a bicycle icon. The text "SIERRA VISTA" is on the left side, "METROPOLITAN" is on the right side, "MPO" is in the center, and "PLANNING ORGANIZATION" is at the bottom.

What is an MPO?

- A regional transportation **policy-making and planning body** with representatives of local, state & federal government and transportation authorities
- Required in **urbanized areas** of 50,000+
- Ensures federal spending on transportation occurs through a **comprehensive, cooperative and continuing (3-C) process**
- Variety of **organizational arrangements** –
 - “hosted” by another agency; stand-alone; existing agency
 - designated as an MPO

Why an MPO?

- Planning to reflect the **region's shared vision** for its future
- **Comprehensive examination** of the region's future investment alternatives
- **Facilitates collaboration** of governments, interested parties and residents
- **Allocating scarce transportation funding** resources effectively

To convene the regional table in order to find innovative solutions to shared concerns

Who is the MPO?



MPO Functions

Five Core Functions:

1. Establish a setting – fair & impartial
2. Evaluate regional transportation alternatives
3. Maintain a Long Range Transportation Plan (LRTP)
4. Develop a Transportation Improvement Program (TIP)
5. Include the public – residents and stakeholders

MPO Core Plans:

	Time Horizon	Contents	Update Requirements
UPWP	1-2 Years	Planning Studies, Tasks, Budget	Annual
TIP	4 Years	Transportation Investments/Projects	Every 1-2 Years
LRTP	20 Years (min.) 25 Years preferred	Future Goals, Strategies & Projects	Every 5 Years

Typical MPO Structure

Policy or Executive Board: responsible for the required transportation planning process for urbanized areas exceeding a population of 50,000

Technical Committee: advisory body to the MPO Board for transportation issues, primarily technical in nature. Oversees MPO technical work and develops recommendations on projects and programs for Board consideration

Advisory Subcommittees: typically subject specific, citizen and technical staff

MPO Funding:

Federal Funding

- Federal Highway Administration
 - MPO Planning Funds (PL)
 - Surface Transportation Block Grants (STBG)
- Federal Transit Administration
 - Transit Planning Funds (5305)
- ADOT
 - State Planning and Research Funds (SPR)

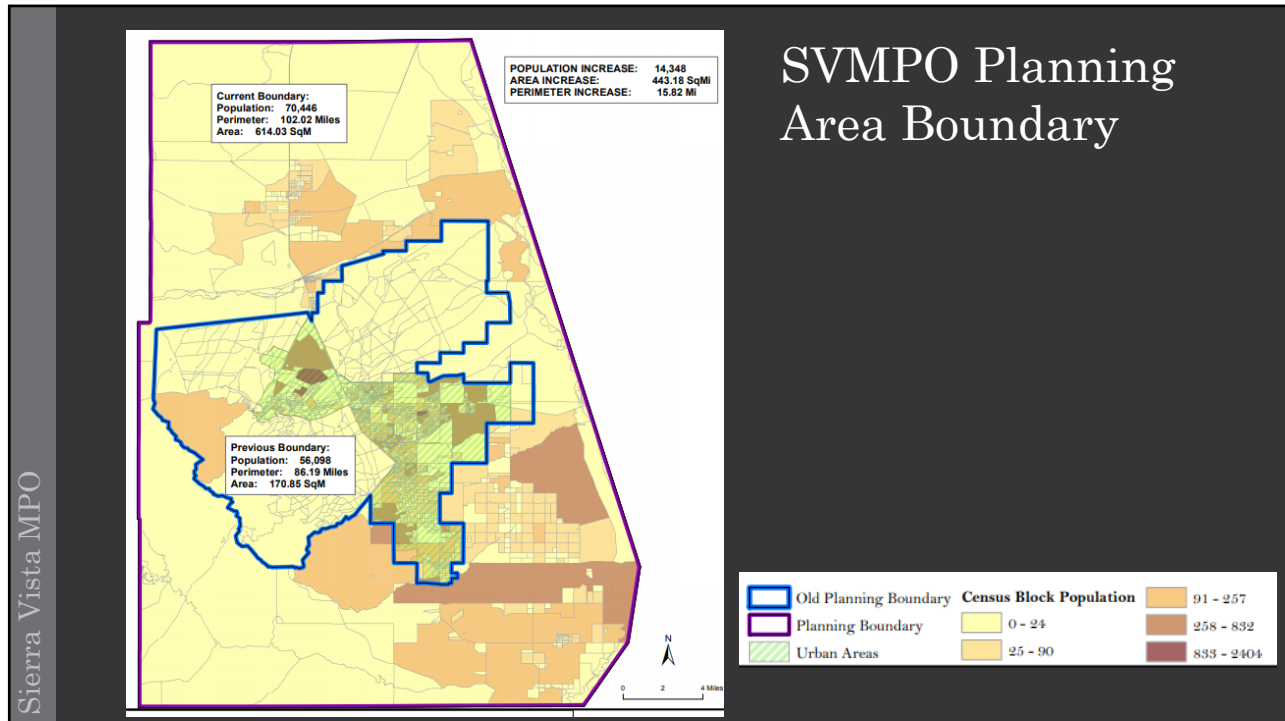
Brief History of the SVMPO's Brief History:

- 2010 U.S. Census declared Sierra Vista and surrounding area as "Urbanized" with a population of more than 50,000 people.
- Federal Mandate to establish the MPO
- Established in March 2013 by the City of Sierra Vista in coordination with Cochise County and declared by Governor Brewer in May 2013
- One full-time staff
- Annual Planning Budget: Approx. \$290K
- Office Location: Sierra Vista Public Works, Pete Castro Center

Member Jurisdictions:

- Board of Directors: 6 Members/5 Voting
 - Sierra Vista (3)
 - Cochise County (1)
 - Town of Huachuca City (1)
 - ADOT (1/State Transportation Board Member)
- Technical Advisory Committee (TAC): 8 Members
Bicycle/Pedestrian Advisory Subcommittee
- Board & TAC meetings – Every other month





Sierra Vista MPO

Regional Transportation:

- Transportation safety, design, and construction \$398,555 is allocated directly to the Sierra MPO for the Sierra Vista region.
- The MPO receives \$291,446 dedicated for transportation planning in the region to plan for the future and improve the transportation system for all.
- Extensive public outreach is required, welcoming all in the transportation planning process.

SVMPO Work Elements:

- SVMPO Administration
- Transportation Systems Data & Monitoring
- Long-Range Transportation Plan
- Transportation Improvement Plan (short-range/funded projects)
- Coordinated Public Transit Planning
- Alternative Transportation Systems Planning
- Regional Planning
- Special Project Planning
- Public Involvement and Outreach

2013 Identified Challenges:

- Coordination among different players in MPO process (and knowing who they are!)
- Staying on top of emerging issues and requirements – federal, state, local
- Balancing management of in-housework and consultant tasks
- Achieving organizational goals with limited financial & staff resources

2019 Identified Challenges:

- ❑ Re-Balancing activities for the expanded boundaries
- ❑ Level of inclusion of state vs local activities
- ❑ Role of the Administrator to individual jurisdictions vs. the SVMPO Board
- ❑ Structure of SVMPO in relationship to their Fiscal Agent and City of Sierra Vista



QUESTIONS?

Contact:

Karen L. Lamberton, AICP
Administrator

SVMPO@SierraVistaAZ.gov

520-515-8525

401 Giulio Cesare Ave, Sierra Vista, AZ 85635

Sierra Vista MPO

