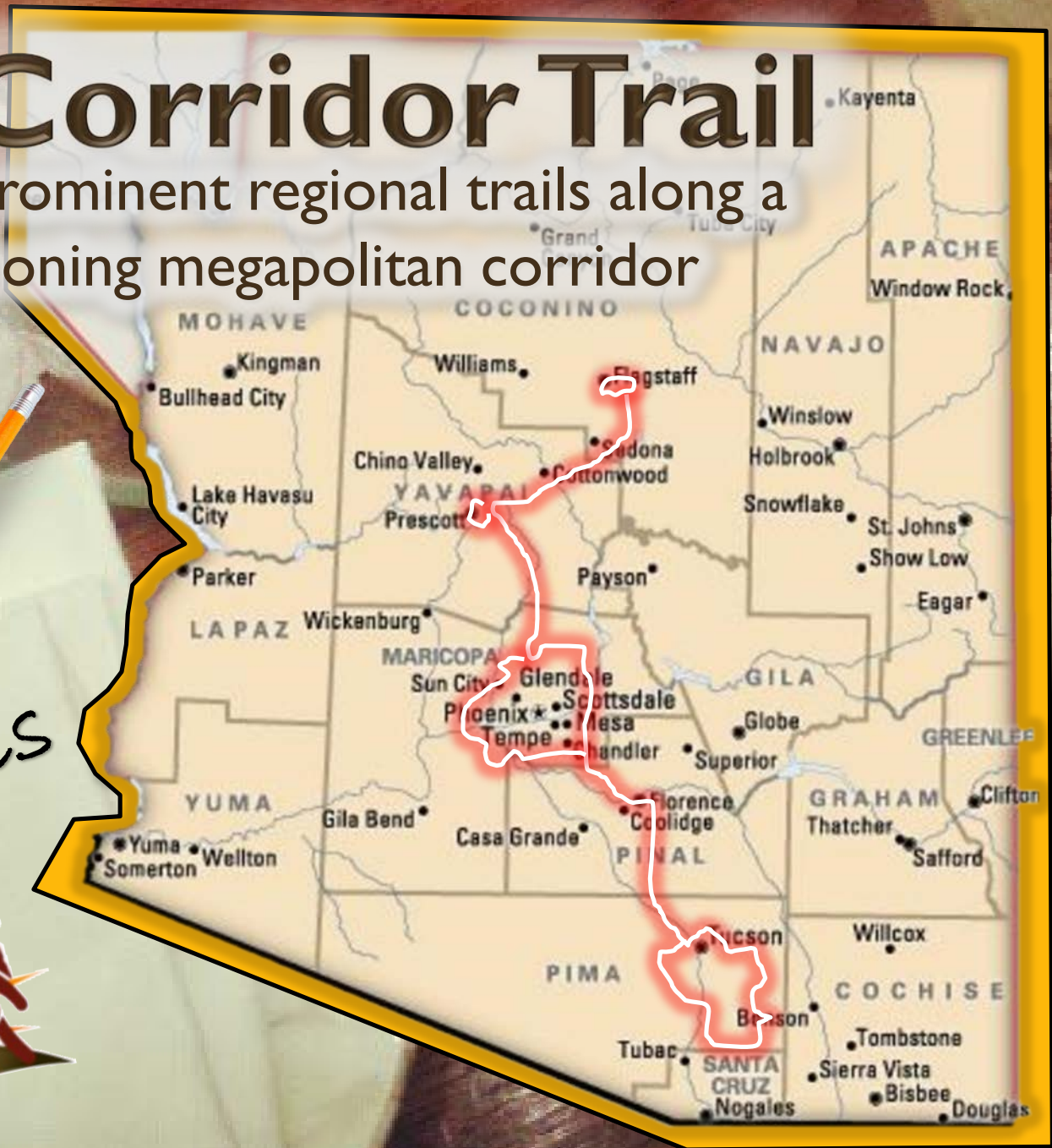


Sun Corridor Trail

Linking prominent regional trails along a burgeoning megapolitan corridor

Trail Genesis



P
I
M
A
·
C
O
U
N
T
Y

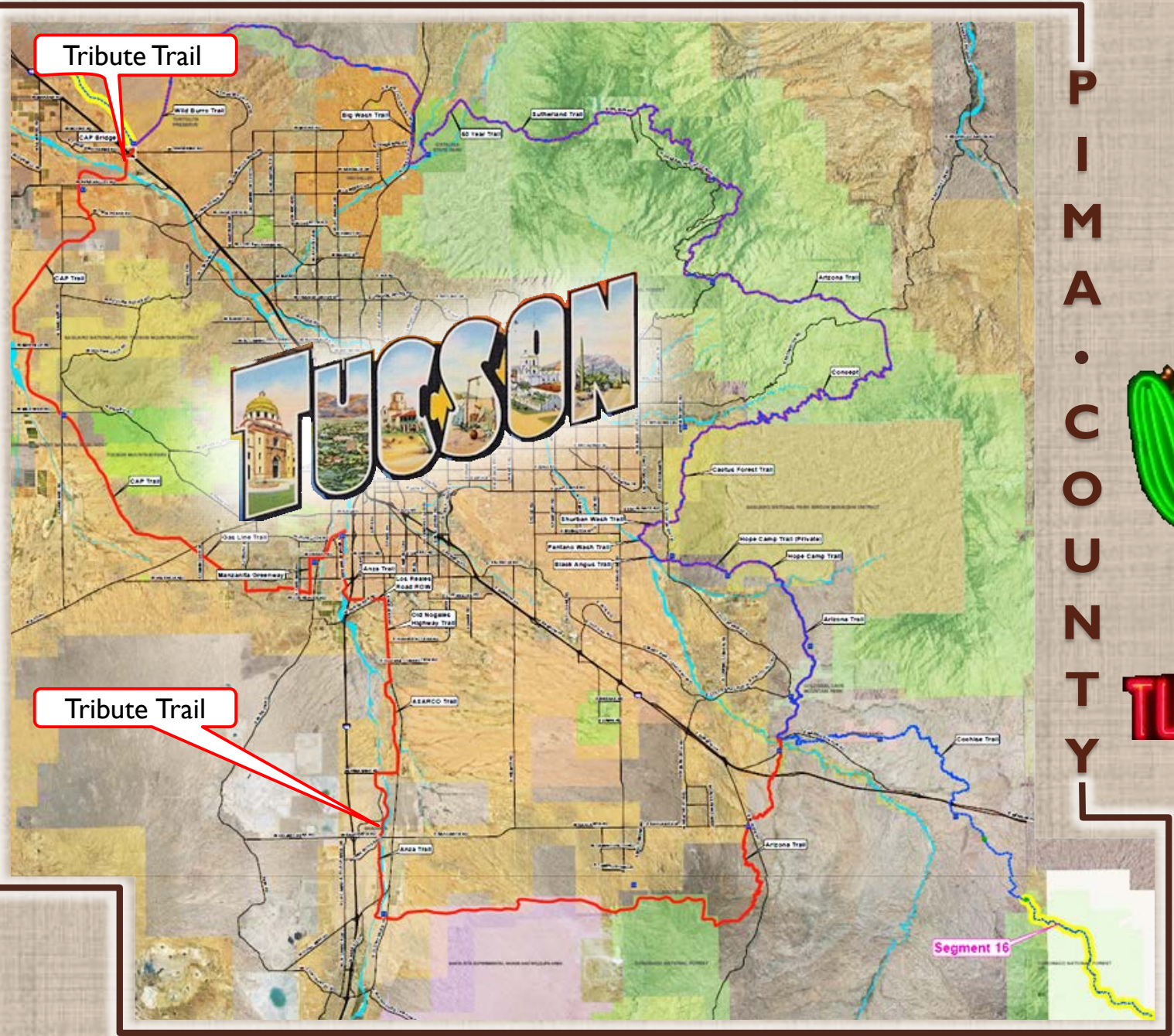


TUCSON

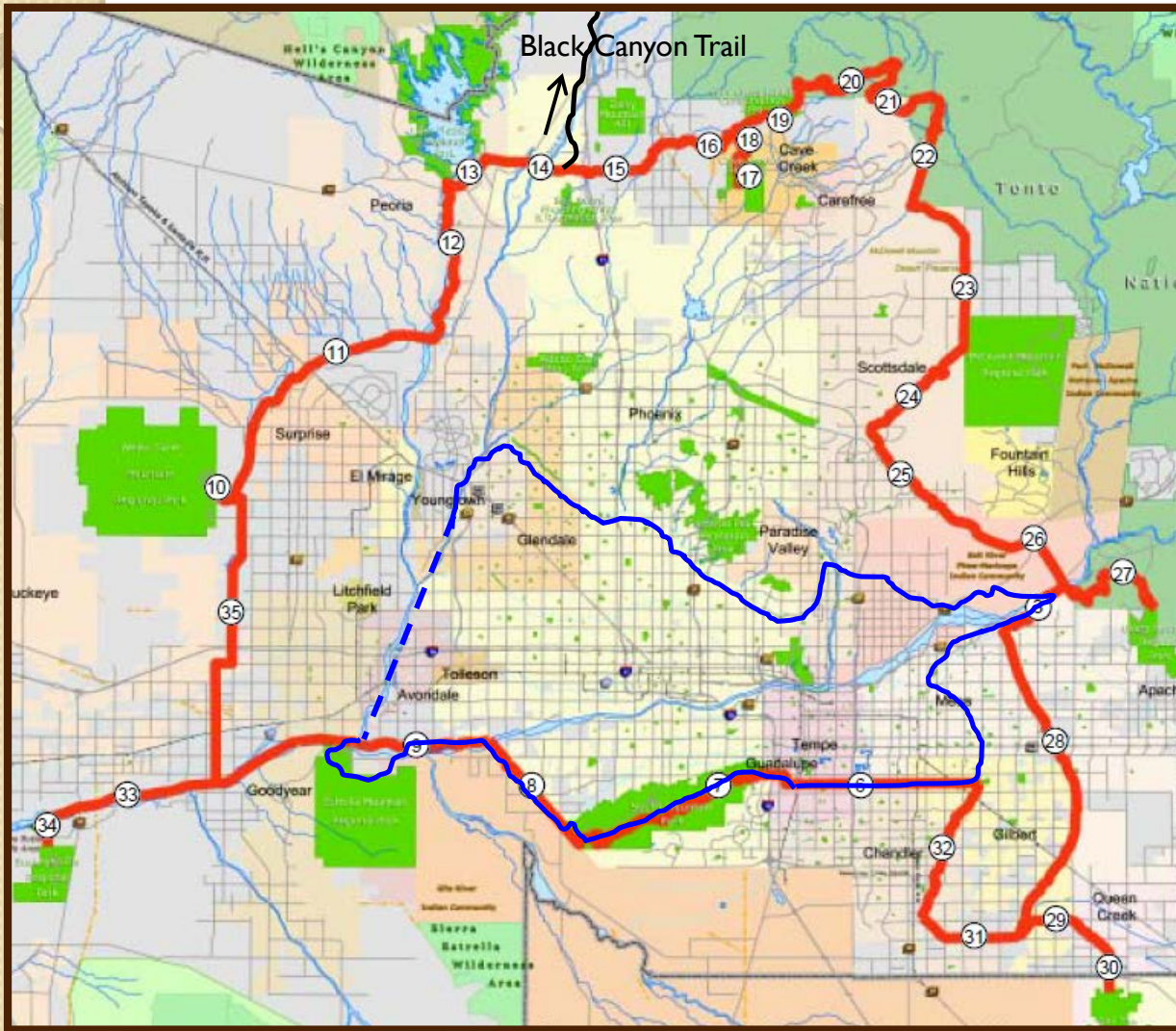
Tribute Trail

Tribute Trail

Segment 16



Maricopa / Sun Circle Trail



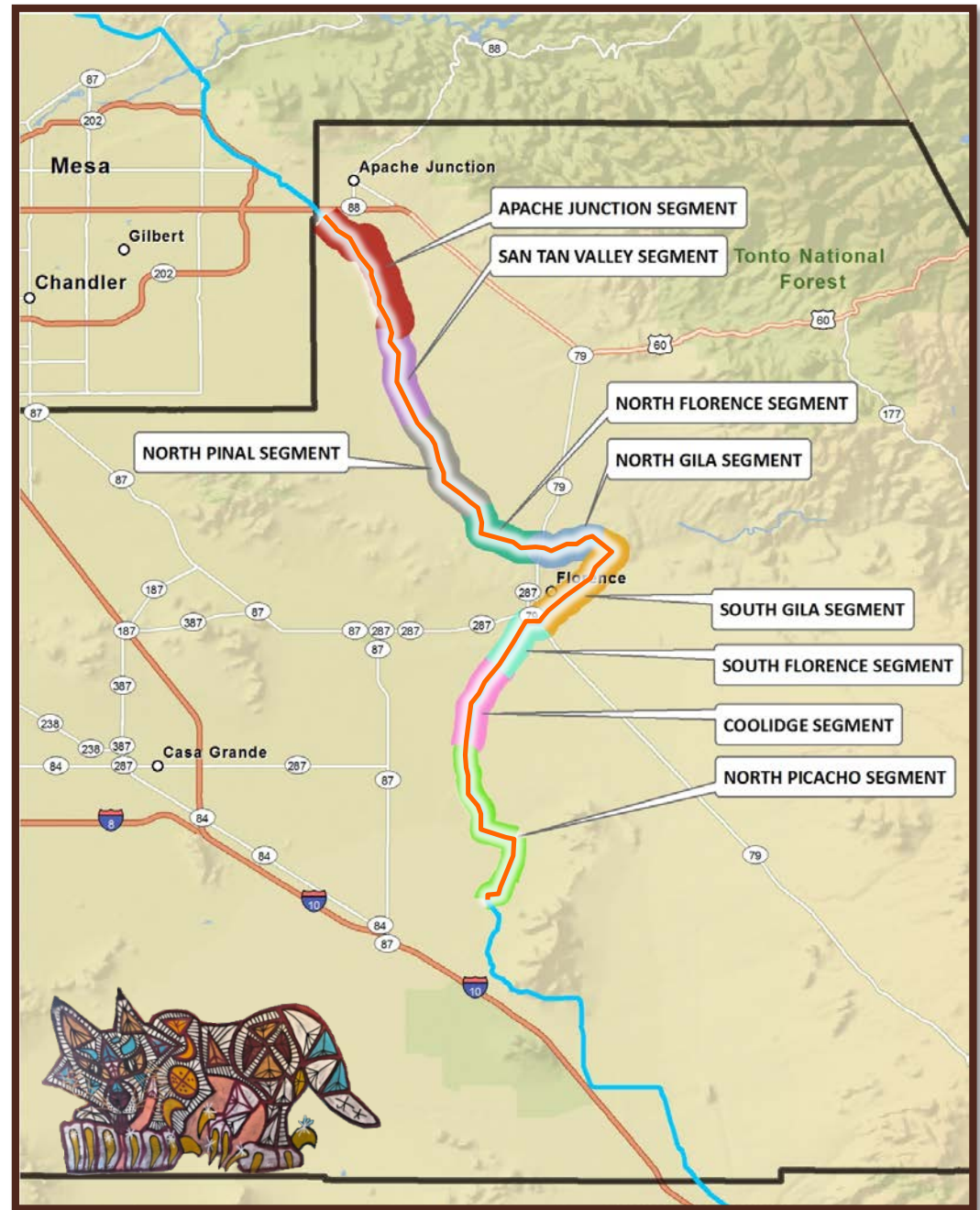
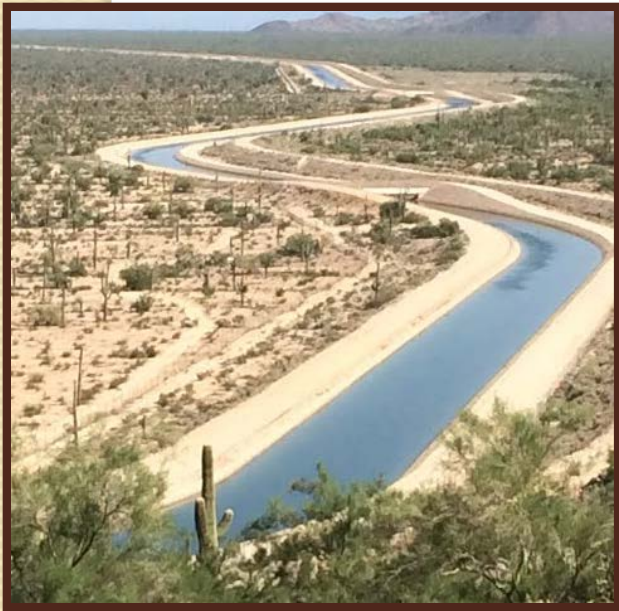
Segment I

The **Maricopa Trail** is a 315 mile long loop trail encompassing the Phoenix metropolitan area

The **Sun Circle Trail** is the original 128 mile long metropolitan loop that shares a portion of the newer Maricopa Trail loop.

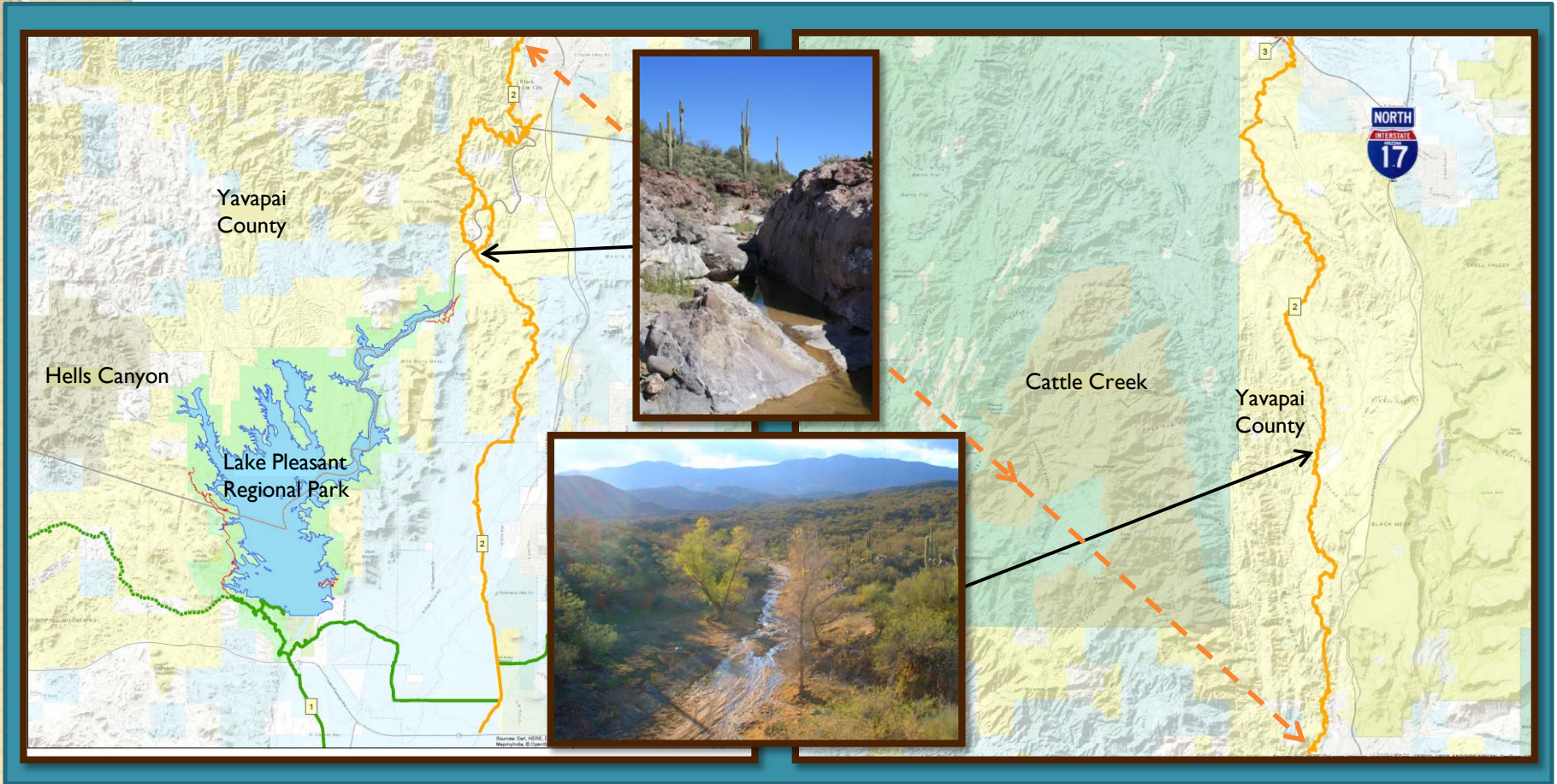


Central Arizona Project (CAP) Trail 90 Mile Segment



Black Canyon Highway Trail

64 mile stretch (existing)

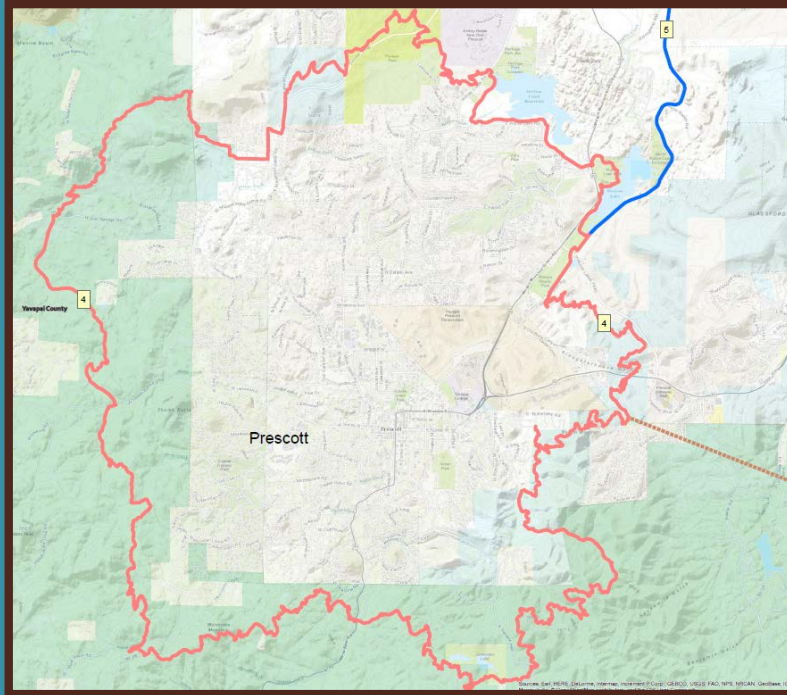


**Black Canyon Trail
(South half)**

**Black Canyon Trail
(North half)**

Prescott Circle Trail

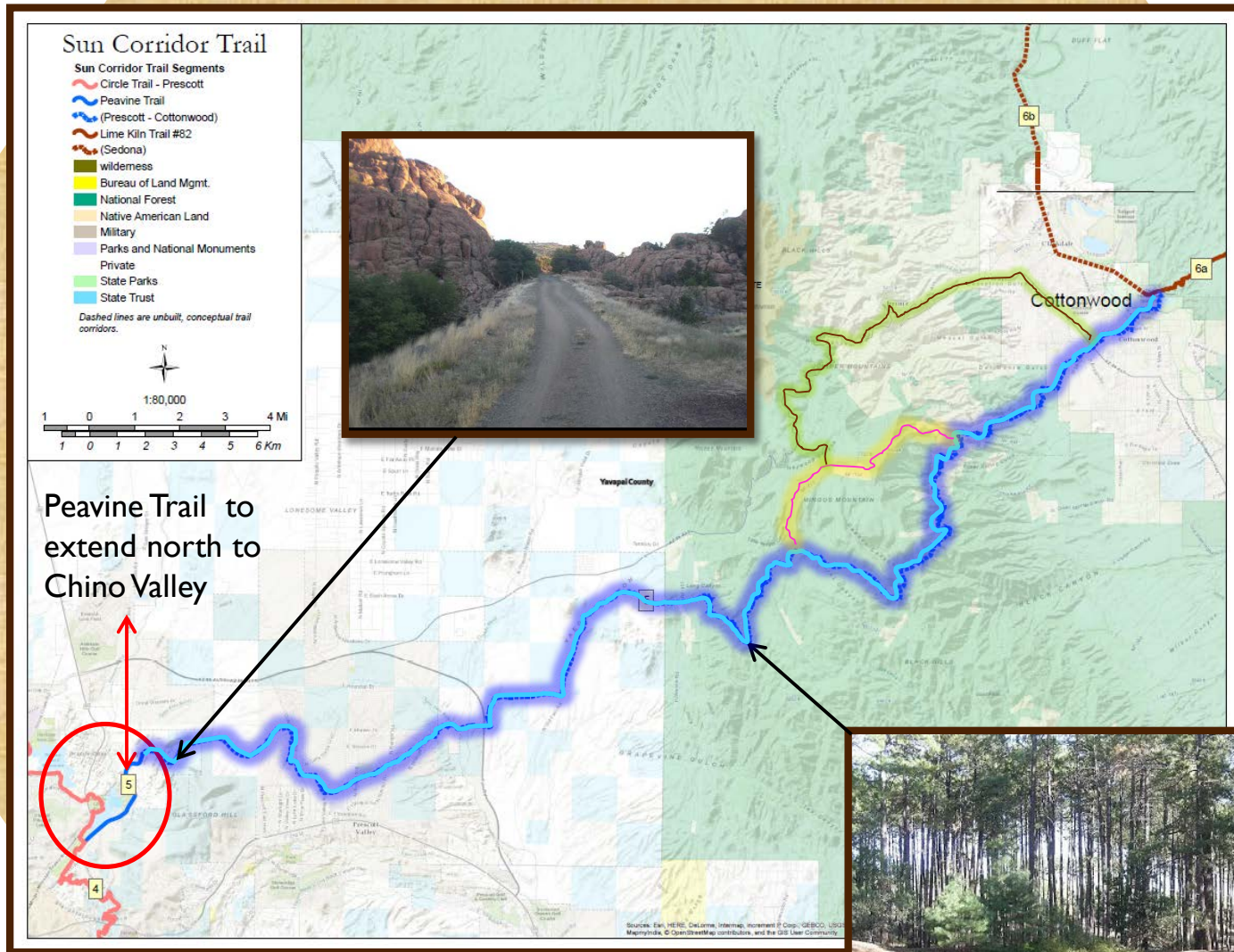
Flagstaff Loop Trail



- Prescott Circle Trail is ~54 miles long
- Peavine Trail (currently under construction) will connect Prescott with Chino Valley to the north

- Flagstaff Loop Trail is 44.5 miles in length

Connection trail from Prescott Valley to Cottonwood (Conceptual)



Peavine Trail to extend north to Chino Valley

39 mile stretch connecting Prescott Valley with Cottonwood

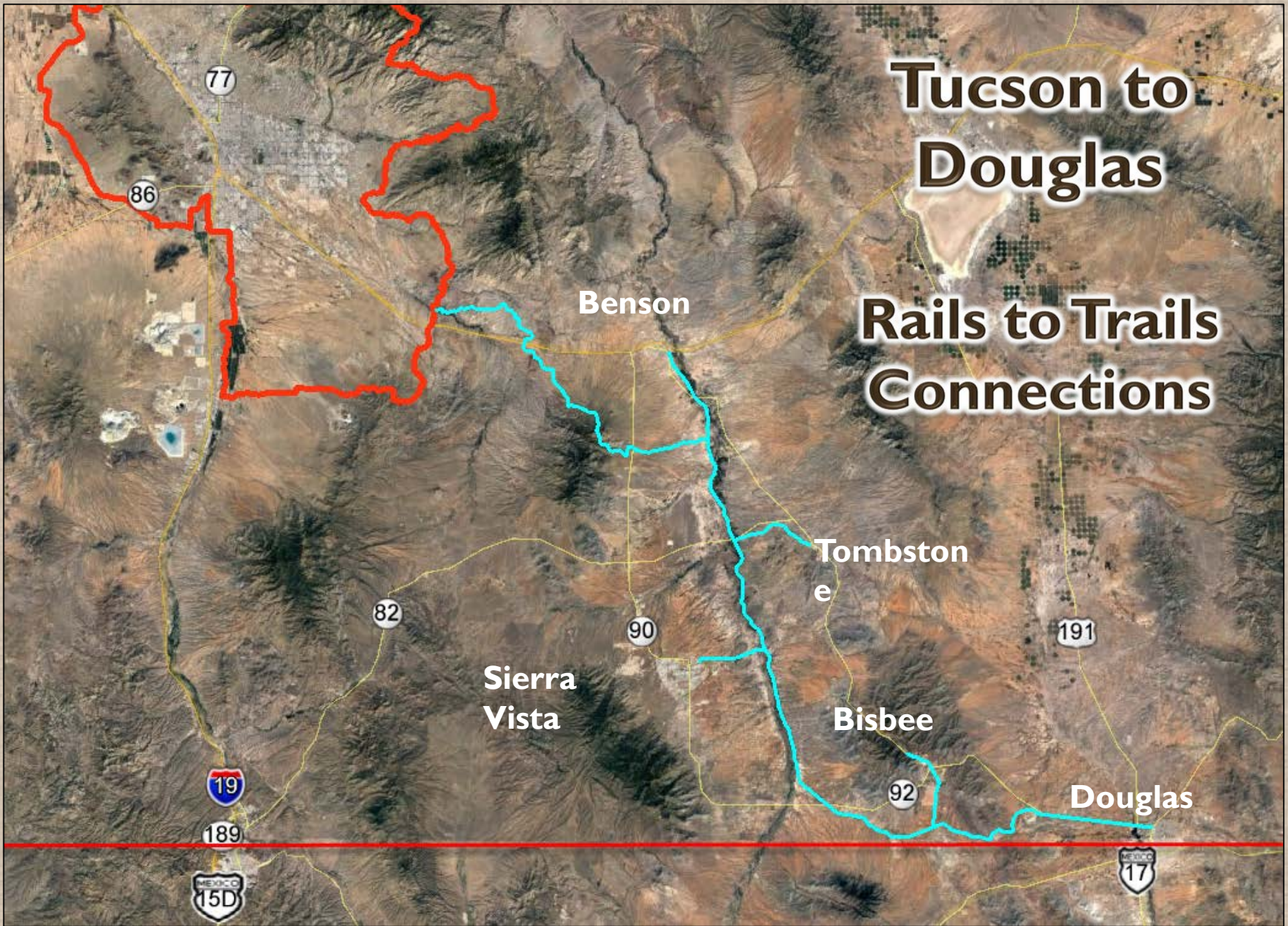


Sedona to Flagstaff (Conceptual)



Tucson to Douglas

Rails to Trails Connections



Benson

Tombstone

Sierra Vista

Bisbee

Douglas

77

86

82

90

191

19

189

MEXICO
15D

92

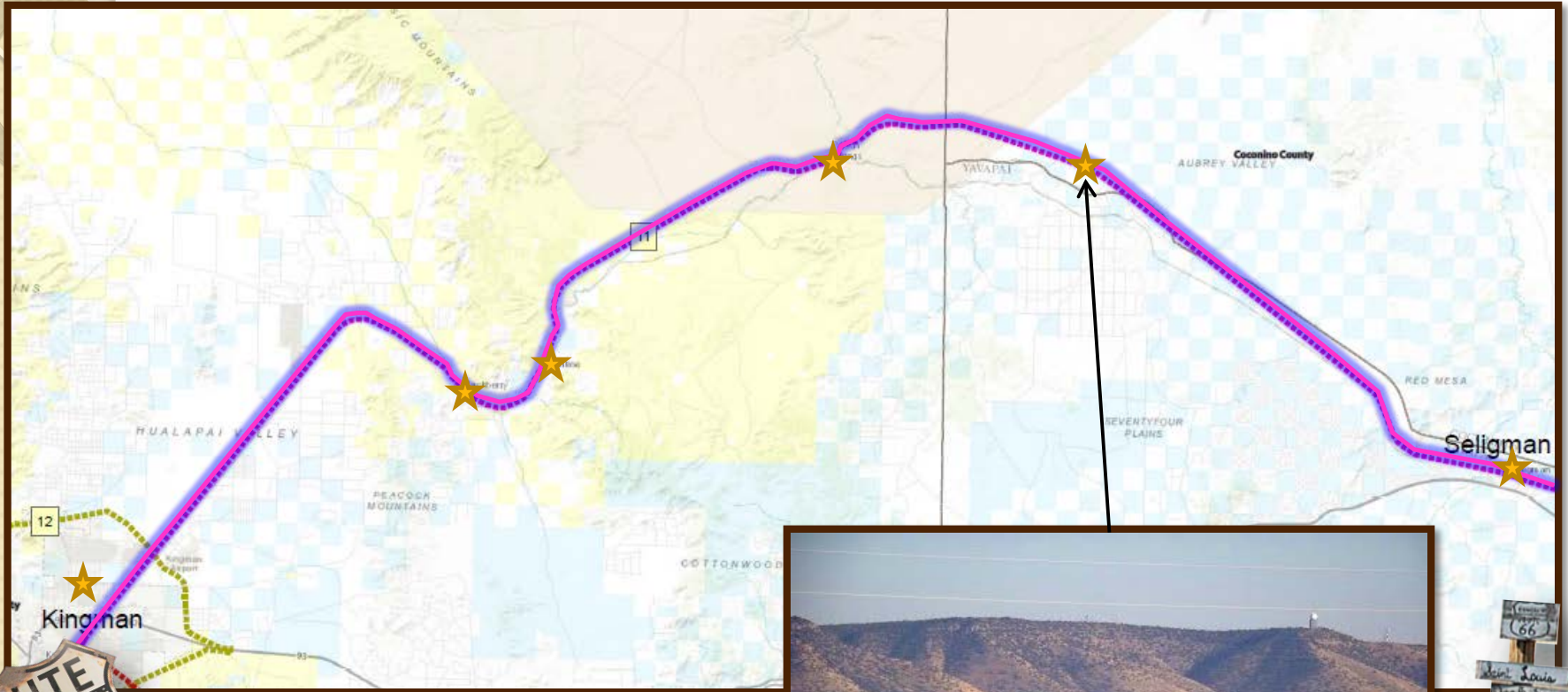
MEXICO
17

Full Trail Concept





Ash Fork / Seligman to Kingman (Conceptual)



This segment connects Williams to Kingman via a 39 mile route along Historic Route 66 through Ash Fork, Seligman, Peach Springs, Valentine, and Hackberry

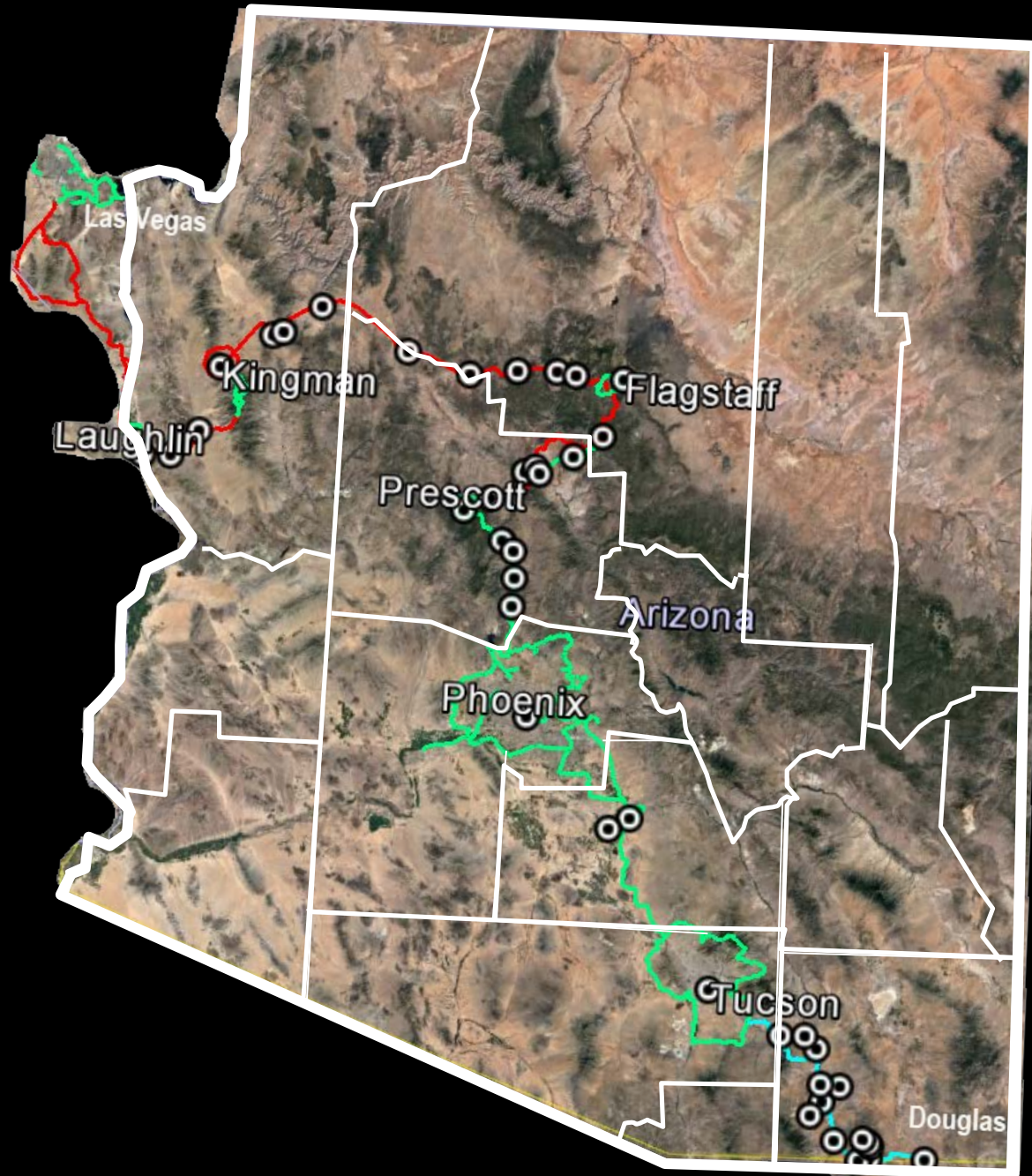


Sun Corridor Trail Cities

Total Miles of existing trails and
proposed connection
~1,500 miles
(from Douglas, AZ to Las Vegas, NV)

Connecting Arizona, California,
and Nevada, 9 counties, and over
41 cities/towns
(not including cities connected by
the Maricopa Trail or the Tribute
Trail loop around Tucson).

~23 of the 41 cities/towns are
located in rural areas of Arizona



Partners and Working Groups

Federal or State Entities: Bureau of Land Management, National Forest, Bureau of Reclamation, and Arizona State Parks

Maricopa County

- Scottsdale
- Black Canyon Trail Coalition
- Phoenix
- Maricopa Trail and Park Foundation
- Arizona Trail Association

Pinal County

- Central Arizona Project (CAP)
- Picacho Mountains Conservancy
- Pima Trail Association
- Apache Junction
- Florence
- Coolidge

Coconino County

- Sedona
- Flagstaff
- Williams
- Seligman
- Ashfork
- Parks
- Belmont
- Mountainair
- Munds Park

Pima County

- Santa Cruz County
- Cochise County
- Tucson
- Benson
- Tombstone
- Sierra Vista
- Bisbee
- Douglas
- Cochise Trail Association
- Marana

Yavapai County

- City of Prescott
- Jerome
- Cottonwood
- Prescott Valley
- Clarkdale
- Mayer

Mohave County

- Kingman
- Bullhead City
- Havasu Wildlife Refuge
- Lake Mead

Clark County, NV

- Las Vegas
- Laughlin
- Searchlight
- Nipton
- Primm
- Jean
- Needles, CA

*Entities and organizations identified by region, with overarching entities listed at the top. (Not all inclusive)



Investing in Trails

- Americans spend more each year on bicycling than they do on airline travel.
- In Arizona, mountain bike events alone are associated with \$2.4 million in economic impact, \$1.0 million in labor earnings, and 40 jobs.¹
- Hiking and biking trails and all-terrain vehicle routes can also stimulate tourism.

Each year 800,000 people come to hike or bike on the Great Allegheny Trail – a 141 mile trail from Cumberland, Maryland to Homestead, Pennsylvania. Trail users spent \$40.8 million in 2008. In 2008, trail users supported \$7.5 million in wages, and business owners attribute 25% of their business to trail proximity (MacDonald, 2011).²

- Health Benefits
- Business Development

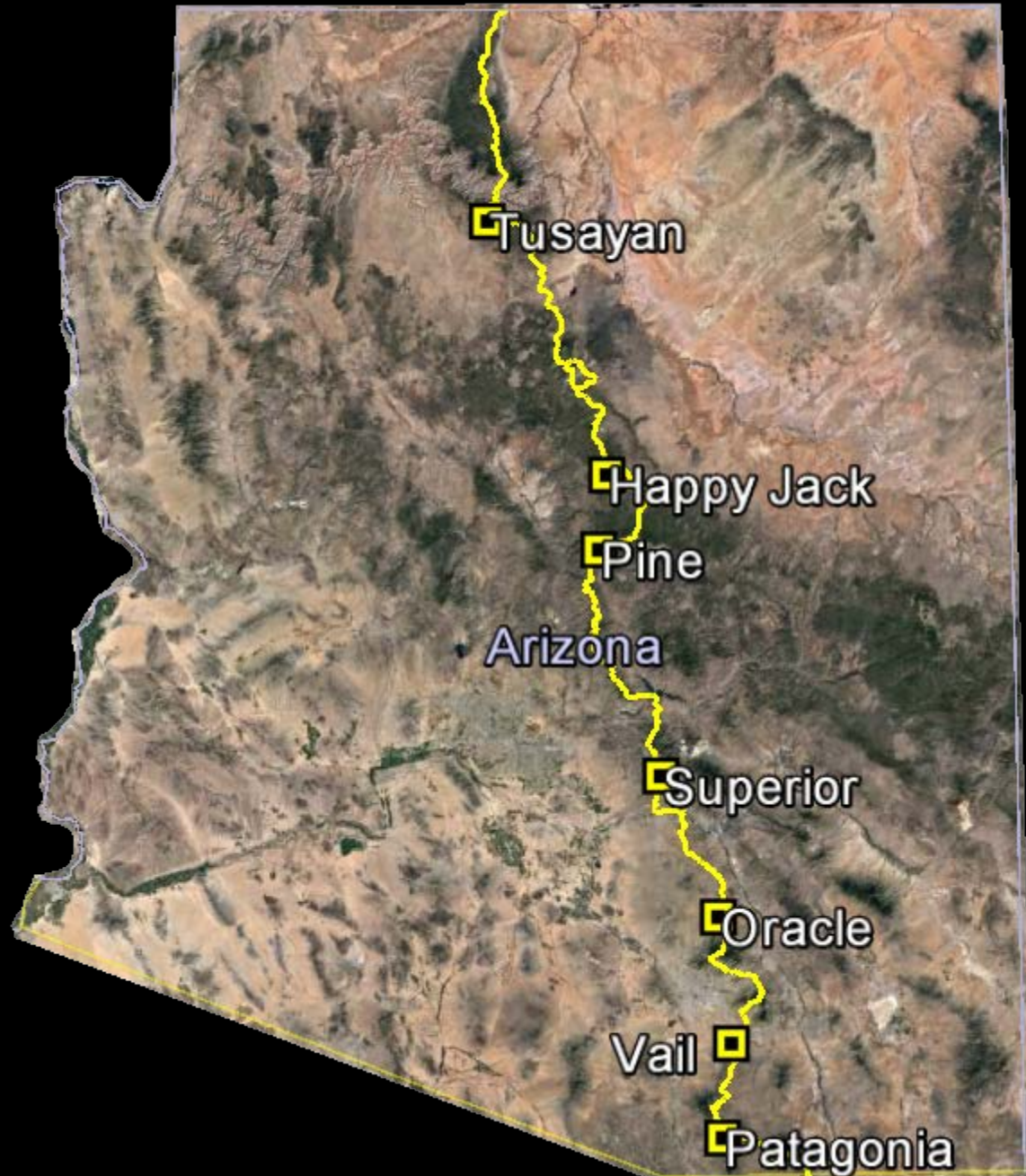


<https://headwaterseconomics.org/trail/>



AZ Trail Story

- Dale Shewalter envisioned a cross-state trail in the 1970s
- Dale was hired by the Kaibab National Forest as their first paid trail coordinator in the 1980s
- A formal agreement between governmental agencies and the establishment of a non-profit for the trail was created in the 1990s
- Using monies from the National Forest, BLM, Nation Park Service, and AZ State Parks, AZ State Parks took on the lead role and hired paid coordinators
- 1994 Arizona Trail Association incorporated as a 501(c)(3)
- At over 800 miles the AZT is now registered as a National Scenic Trail



Next Steps

Turning concept into a reality

- Master Agreement – Counties and Cities (needs to be drafted)
- State Participation
- Federal Assistance
- 501(c)(3)
- NGO's – APRA, NRPA, REI, CAZCA, etc.
- Long Term Marketing, Signage, and Maintenance



Sun Corridor Trail



Thank You