

Cochise County/USGS Hydrological Monitoring FY22



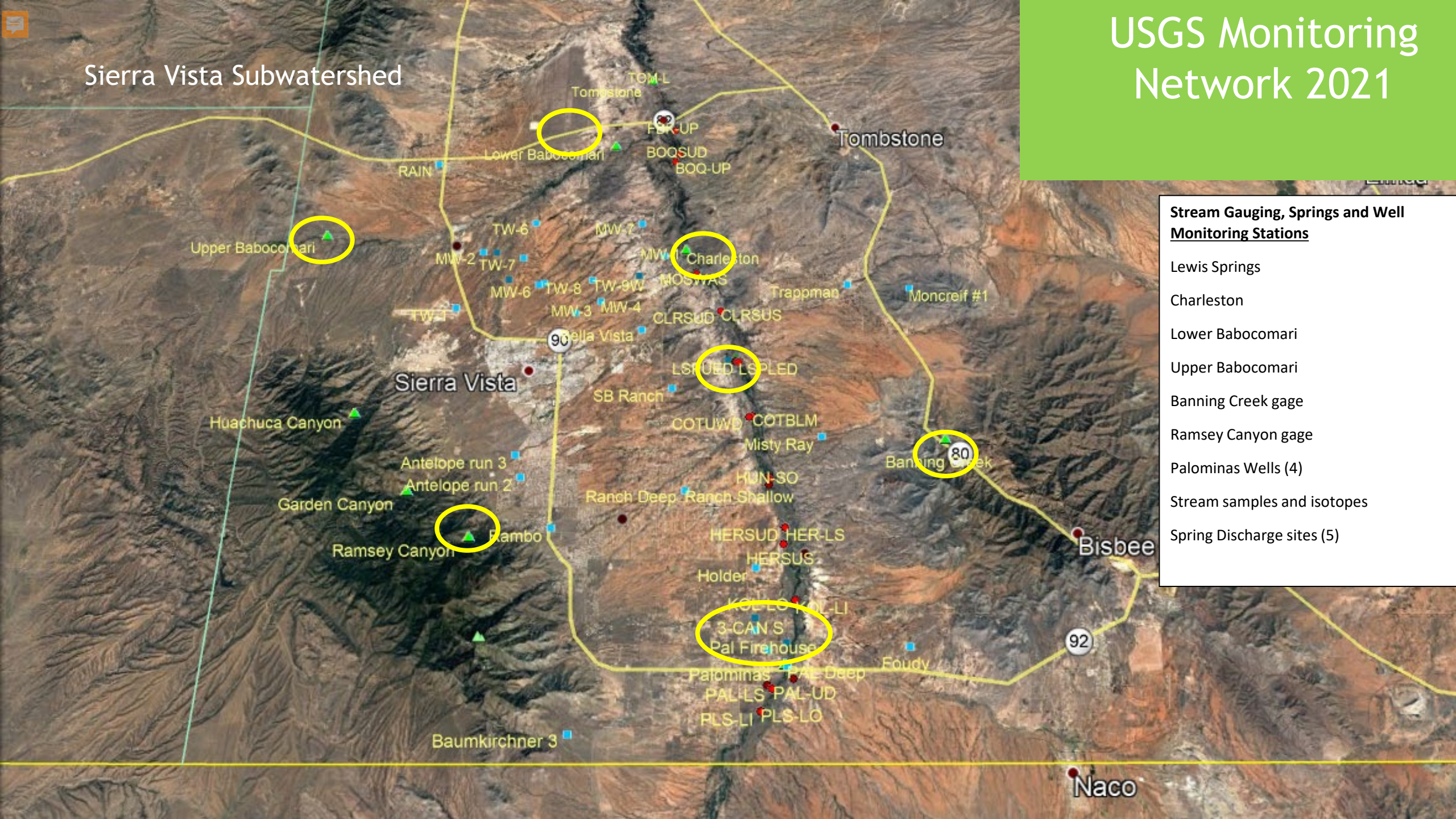
Joint Funding Monitoring Agreement with US Geologic Survey for San Pedro Basin

- County share of agreement with US = \$94,305 (Fed FY22)
- Agreement covers operation and data collection/analysis of 6 stream gauges, 4 monitoring wells, 5 spring discharge sites, as well as water sampling and analysis.
- Partnership with USGS since 2004
- County and partner contributions have led to the most robust hydrologic data set and modeling of any river in the west other than the Colorado River.
- Other USPP partners contributing to USGS monitoring include Sierra Vista, Ft. Huachuca, BLM, ARS, ADWR and TNC



USGS Monitoring Network 2021

Sierra Vista Subwatershed



Stream Gauging, Springs and Well Monitoring Stations

- Lewis Springs
- Charleston
- Lower Babocomari
- Upper Babocomari
- Banning Creek gage
- Ramsey Canyon gage
- Palominas Wells (4)
- Stream samples and isotopes
- Spring Discharge sites (5)