

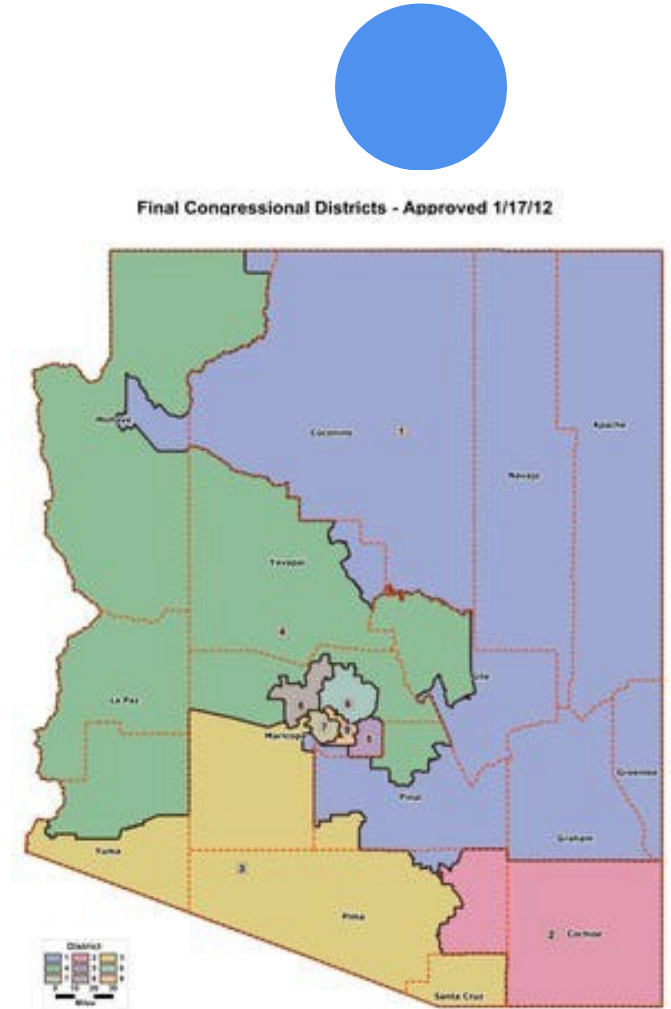


Redistricting Guide

Cochise County


What is Redistricting?

- Conducted every 10 years, after the federal census
- District boundaries for federal, state and local elected offices are redrawn to reflect new population data and shifting populations
- Redistricting Principles:
 - Redrawn districts shall comply with requirements in the United States Constitution, Voting Rights Act and State Laws
 - Redrawing ensures equal voter representation and electoral districts that reflect each area's diverse population
 - Must be geographically contiguous, compact, and maintain integrity of a city, community of interest, etc.
- How and where district lines are drawn can shape a community's ability to elect the representative of their choice



Arizona Electoral Districts

- U.S. House of Representatives
 - 9 Arizona members
- Arizona Legislature
 - 30 members in State Senate
 - 60 members in State House of Representatives
- County Board of Supervisors
- Community College Governing Boards
- Some Cities or other jurisdictions with Wards



And Justice of the
Peace...
with a caveat!
A.R.S. § 22-125



Who is
Responsible for
Redistricting?



County, Local and Special Districts

- **County** – Supervisor Districts, Justice Precincts and Community College Districts (A.R.S. §§ 11-212, 251)
- **Cities/Special Districts** – If they have districts or wards
- Most jurisdictions handle with internal committee comprised of Administration, Elections and GIS staff

Ideal Population

- Redistricting begins by determining the “ideal” population
 - $\text{Total Population} \div \# \text{ of Districts} = \text{Ideal Population}$
 - EX: 1M residents \div 10 districts = 100,000 per district
- Any amount greater or less than this is called a deviation
- The law allows for some deviations in State and local redistricting plans, generally at or below 10%
 - A.R.S. § 11-212 requires County supervisorial districts to have equal population “with no more than 10% difference in population”

Ideal Population and Current District Lines

BOS (3 Districts)

Upper: 43,906

Lower: 39,725

BOS	Population 2020
1	43,384
2	40,964
3	41,099

College (5 Districts)

Upper: 26,344

Lower: 23,835

COLLEGE	Population 2020
1	24,180
2	24,766
3	26,008
4	25,468
5	25,025

Justice of Peace – Based on productivity credits set in statute, A.R.S. § 22-125



Pitfalls to Avoid

Gerrymandering

America's Most Gerrymandered Districts

Most gerrymandered Congressional districts in the U.S. according to compactness index*

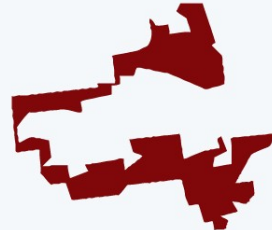
1. Maryland's 3rd district



2. Texas's 33rd district



3. Illinois's 4th district



4. Texas's 35th district



5. Louisiana's 2nd district



* ratio of the area of the district to the area of a circle with the same perimeter
Source: Washington Post

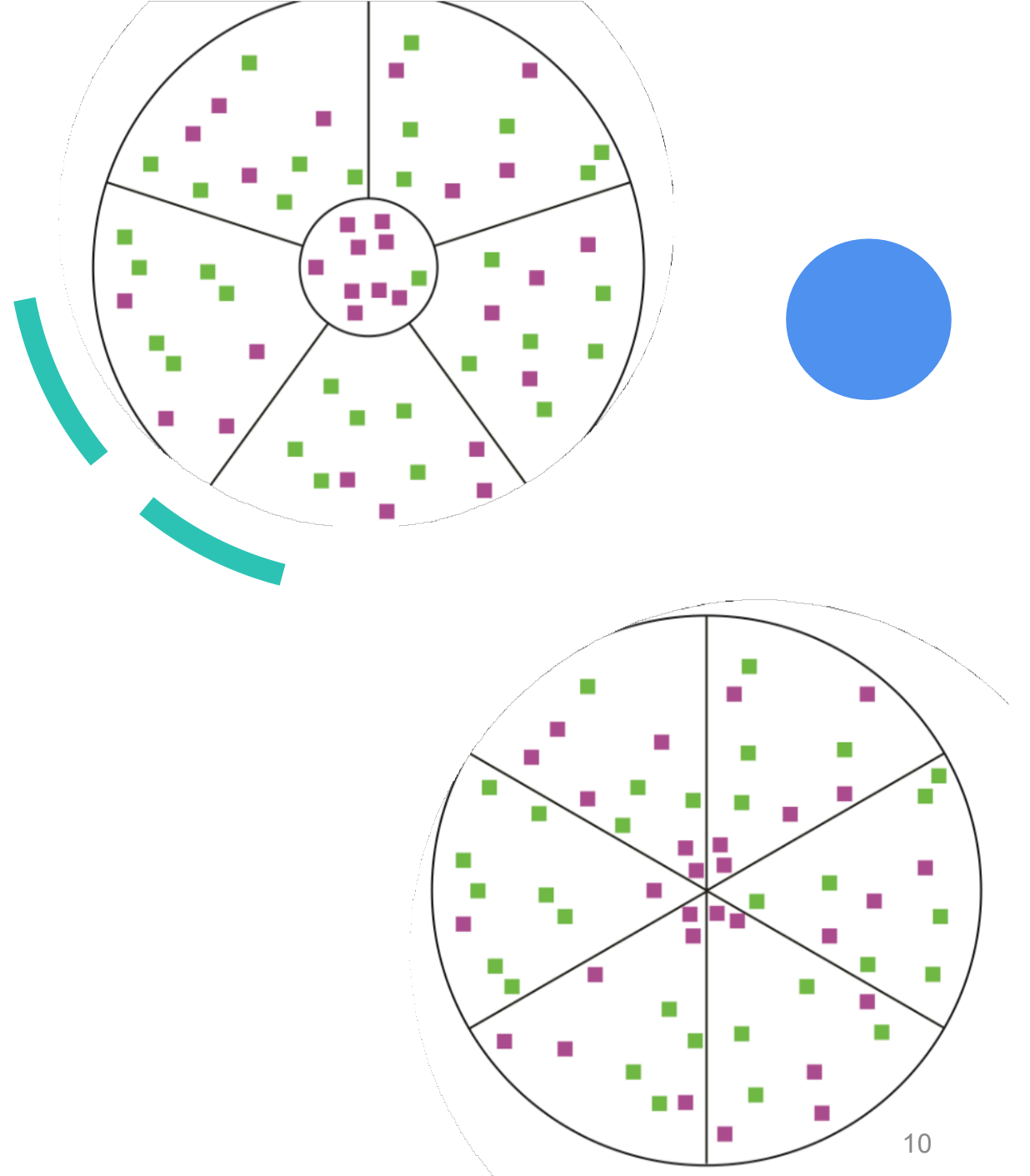


The practice of manipulating the boundaries of an electoral constituency to favor one political party or class.



Packing and Cracking

- **Packing** – Concentrating one party's supporters into districts that they will win by overwhelming margins
- **Cracking** – Dividing a party's supporters among multiple districts so that they fall short of a majority in each district



NOT Considering Race

- Race is always a part of the redistricting process
- Voting history allows for analysis of racially polarized voting
 - Necessary consideration to comply with Section 2 of the Voting Rights Act



Lack of Community Involvement

- Best practice –consider changes to district maps in public forum
- Public input helps identify communities of interest
- Have public hearings in different areas of county and at various times to increase public participation
- Provide mapping tools on website for residents to propose district lines (and paper maps)
- Educate the local media on redistricting process





Voting Precincts


What are Precincts?

- The basic geographical areas for organizing and administering elections
- How they are used:
 - Laying out ballots
 - Used to rotate candidate names on ballots
 - Establishing polling places
 - Reporting election results and voter registration statistics
 - Election of political party precinct committeemen
- The Board of Supervisors is required to establish voting precincts before October 1 each year preceding the general election (A.R.S. § 16-411(A))

Drawing Precincts

Rules

- Cannot cross Congressional, Legislative or Board of Supervisor district boundaries

 Each precinct contains 1 BOS, 1 College, and 1 JP District.

- Precinct size is based on number of registered voters, not population

Precinct Parts/ Ballot Splits

- Splits are caused when precincts cross city, town and special district boundaries
- Try to minimize ballot splits (and zero voter precincts)



Precincts
Have Many
Districts

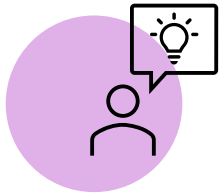
Precinct 24: St. David

District Type	District Name
Board of Supervisors	Supervisory 03
Community College	Cochise CCD 01
Justice of the Peace	Justice Precinct 3
Congressional	CD 2
Legislative	LD 14
School	St. David
Hospital	San Pedro Valley
Fire	St. David Fire District
Water Special District	St. David
Irrigation Special District	St. David
Flood Special District	St. David



Process & Timeline

DISCUSSION PROCESS



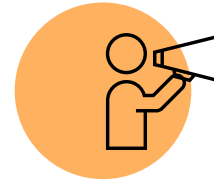
Idea

Redistricting idea based on community of interest concern



RAC Agenda Item

Proposal will be noticed on next meeting for RAC discussion



Public Hearing

If RAC approves, proposal will be placed as one of options presented at public hearing



RAC to BOS

Following Public Hearing, RAC will vote on recommendations to BOS.

OCTOBER - FORECAST

1

RAC Meeting
Friday
9:00 am
SV/FH
Proposal

15

RAC Meeting
Friday
9:00 am
COI Topics
Colleges, JPs,
Precincts

22

RAC Meeting
Friday 9:00 am
Approve
proposals for
Public Hearing

November – For Approval

4

Public Hearing
Thursday
6:00 pm
Benson/Willcox
Streaming

8

Public Hearing
Monday
6:00 pm
Bisbee/Douglas
Streaming

16

Public Hearing
Tuesday
6:00 pm
SV/HC/TS
Streaming

19

RAC Meeting
Friday
9:00 am
Vote on final map
recommendations
to BOS

30

BOS Public Hearing
Tuesday
10:00 am
Vote on final maps

Thank You

