

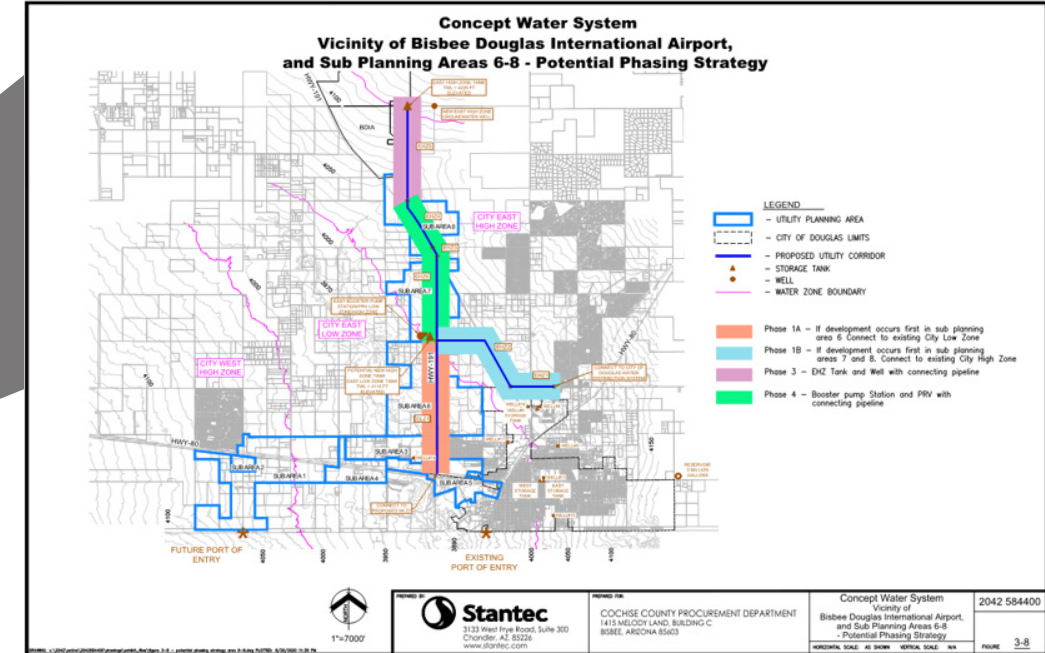
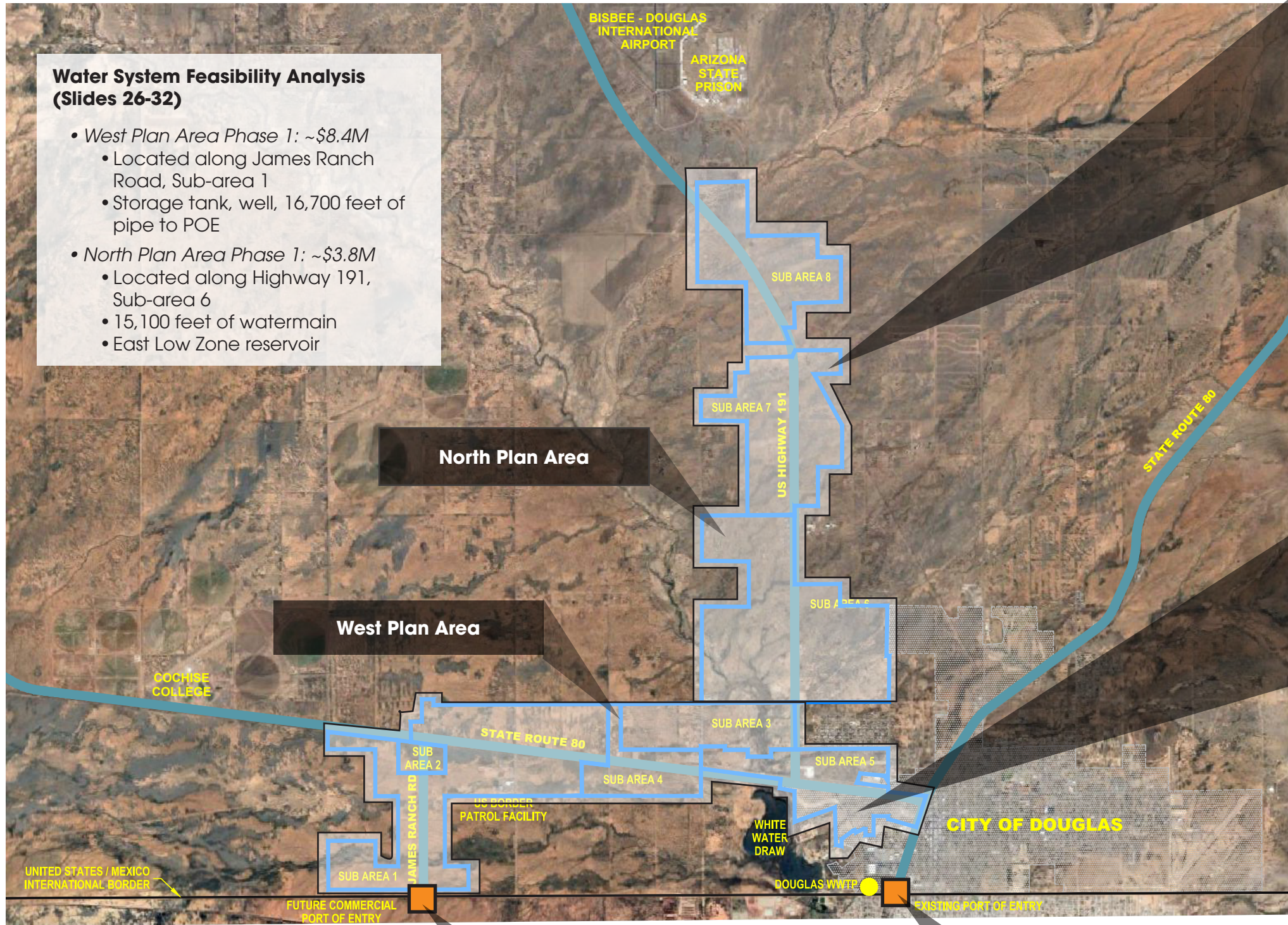


# Water and Wastewater Feasibility Study for the Douglas Commercial Port of Entry

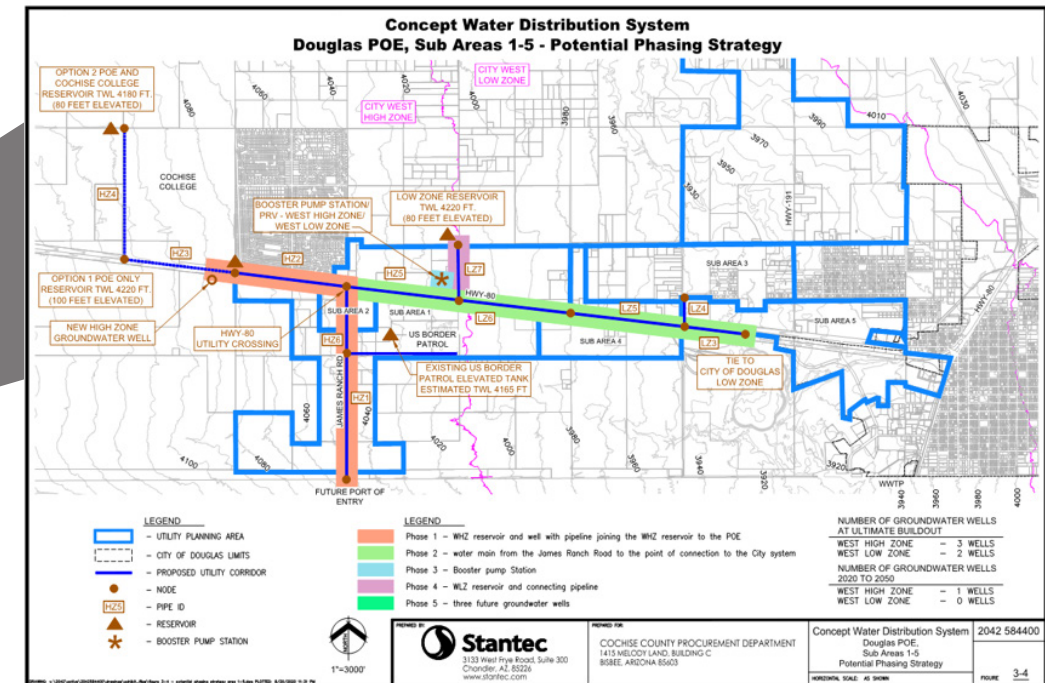
January 27, 2020 | Stantec Consulting Services Inc.

## Water System Feasibility Analysis (Slides 26-32)

- **West Plan Area Phase 1: ~\$8.4M**
  - Located along James Ranch Road, Sub-area 1
  - Storage tank, well, 16,700 feet of pipe to POE
- **North Plan Area Phase 1: ~\$3.8M**
  - Located along Highway 191, Sub-area 6
  - 15,100 feet of watermain
  - East Low Zone reservoir



Water System Alternatives in North Plan Area (Slides 30-31)

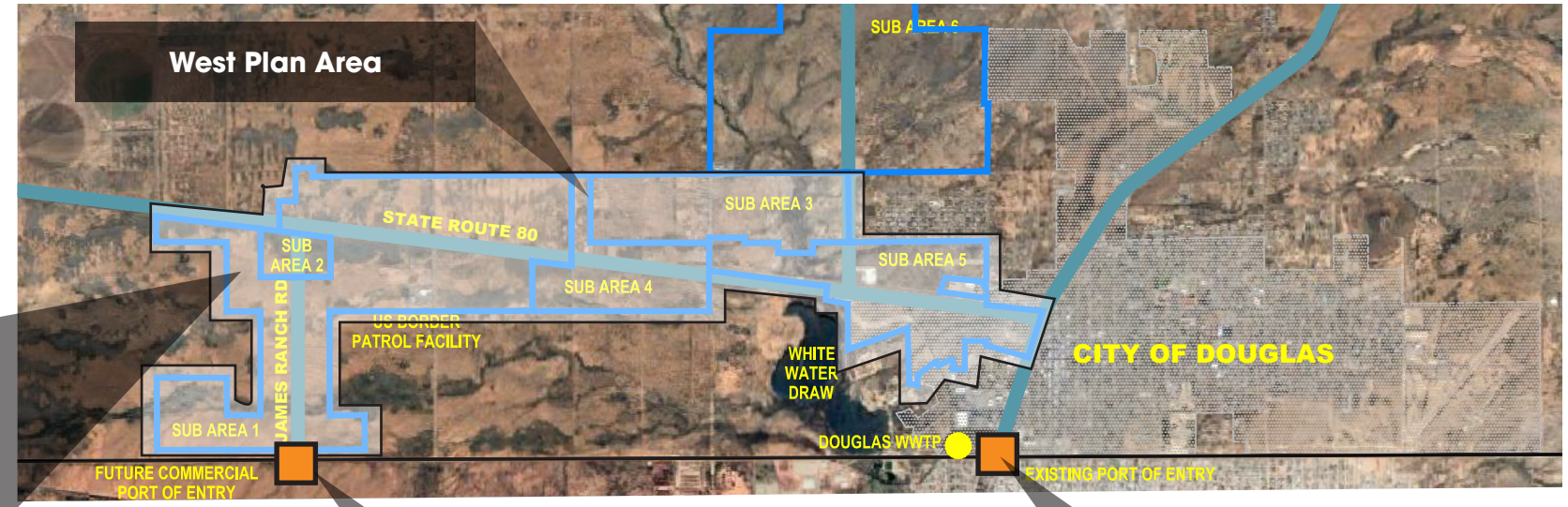


Water System Alternatives in West Plan Area (Slides 28-29)

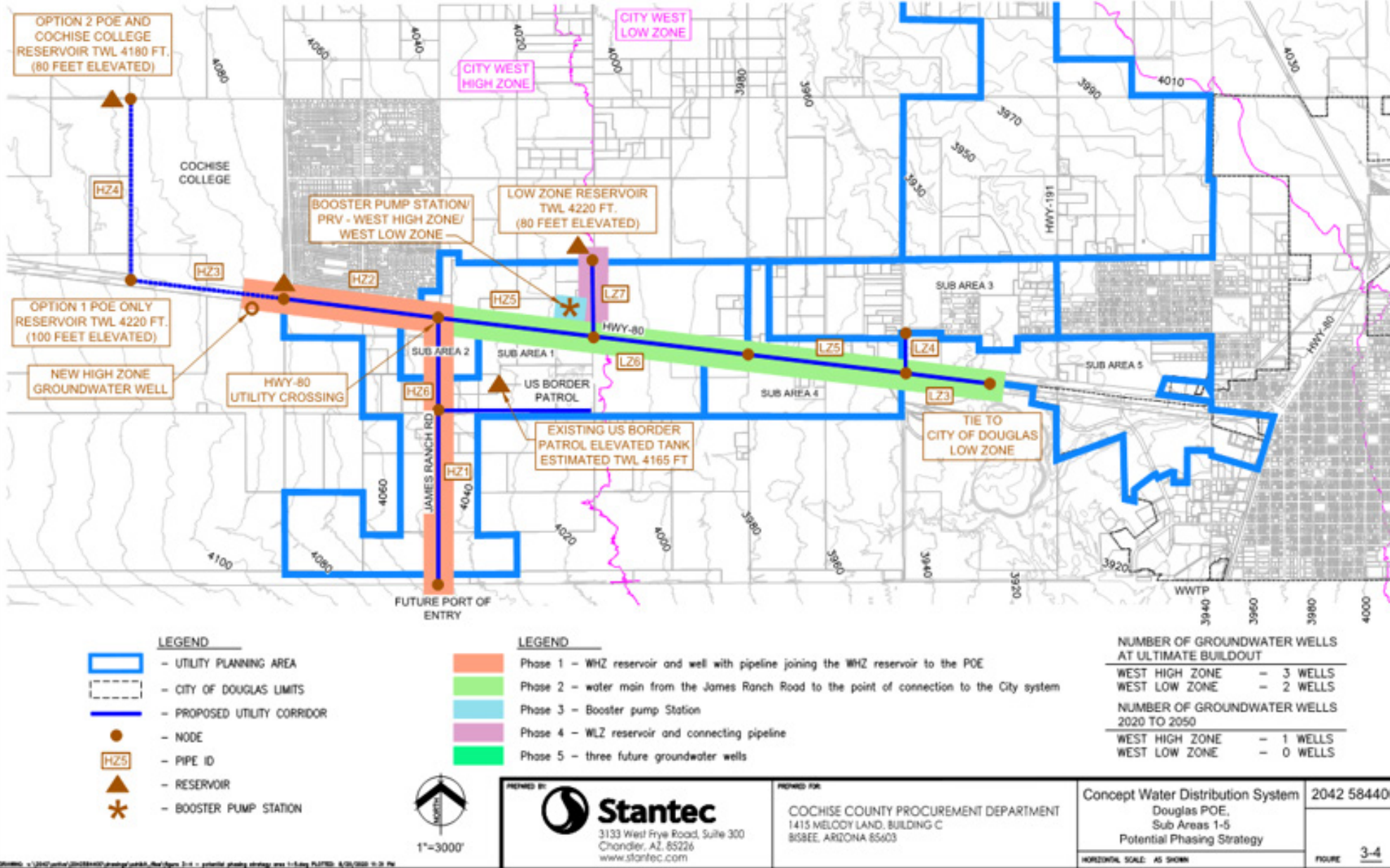


# Water and Wastewater Feasibility Study for the Douglas Commercial Port of Entry

January 27, 2020 | Stantec Consulting Services Inc.  
WEST PLAN AREA WATER SYSTEM



## Concept Water Distribution System Douglas POE, Sub Areas 1-5 - Potential Phasing Strategy



Proposed Douglas Port of Entry

Existing Port of Entry



# Water and Wastewater Feasibility Study for the Douglas Commercial Port of Entry

January 27, 2020 | Stantec Consulting Services Inc.  
NORTH PLAN AREA WATER SYSTEM

