

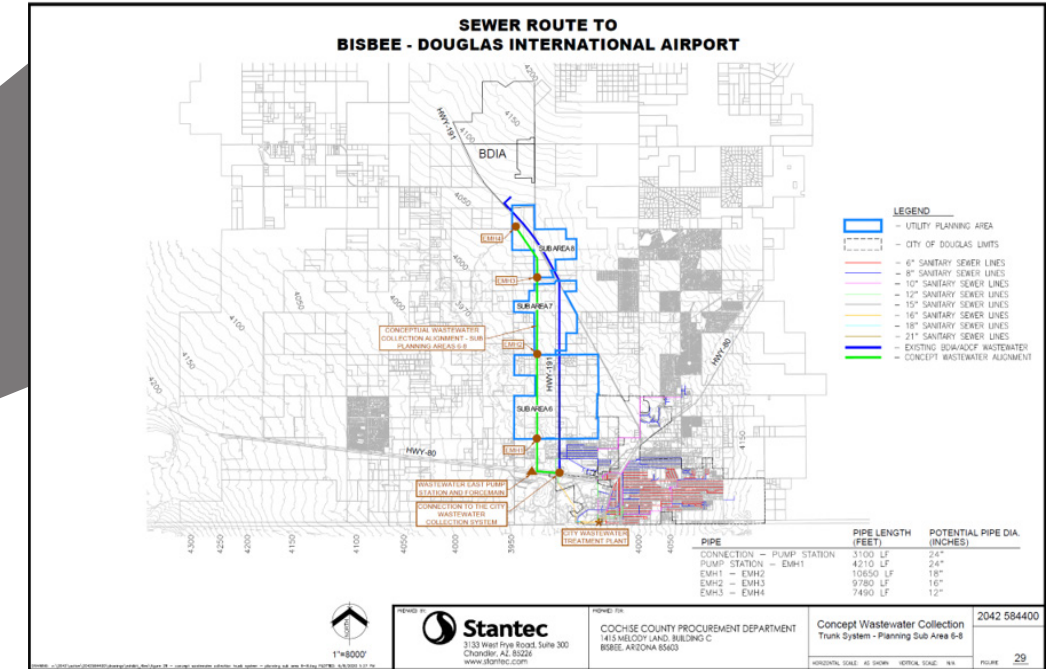
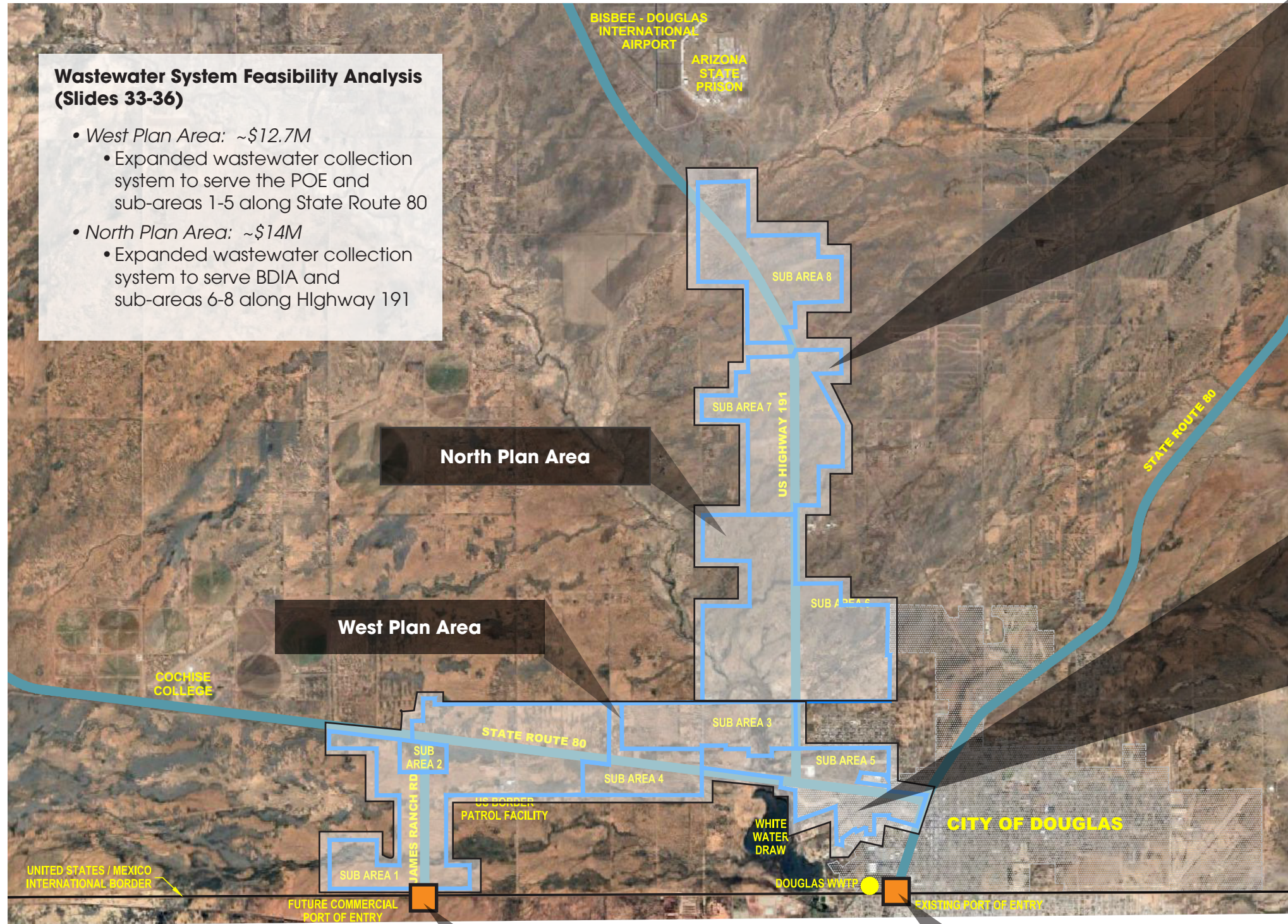


Water and Wastewater Feasibility Study for the Douglas Commercial Port of Entry

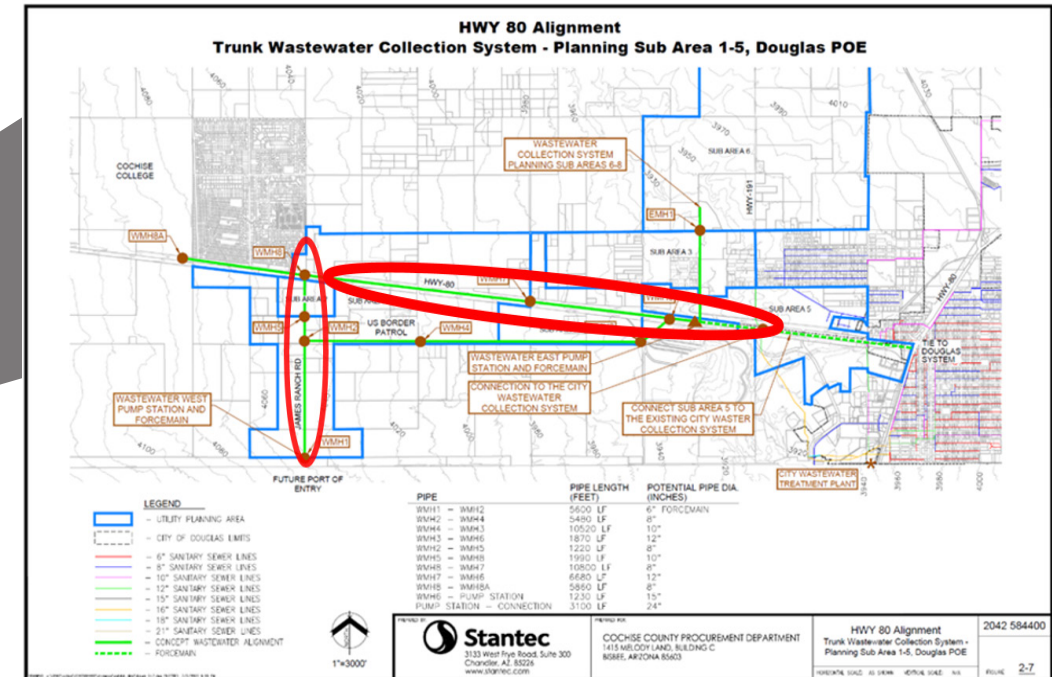
January 27, 2020 | Stantec Consulting Services Inc.

Wastewater System Feasibility Analysis (Slides 33-36)

- **West Plan Area:** ~\$12.7M
 - Expanded wastewater collection system to serve the POE and sub-areas 1-5 along State Route 80
- **North Plan Area:** ~\$14M
 - Expanded wastewater collection system to serve BDIA and sub-areas 6-8 along Highway 191



Wastewater System Alternatives in North Plan Area (Slide 35)



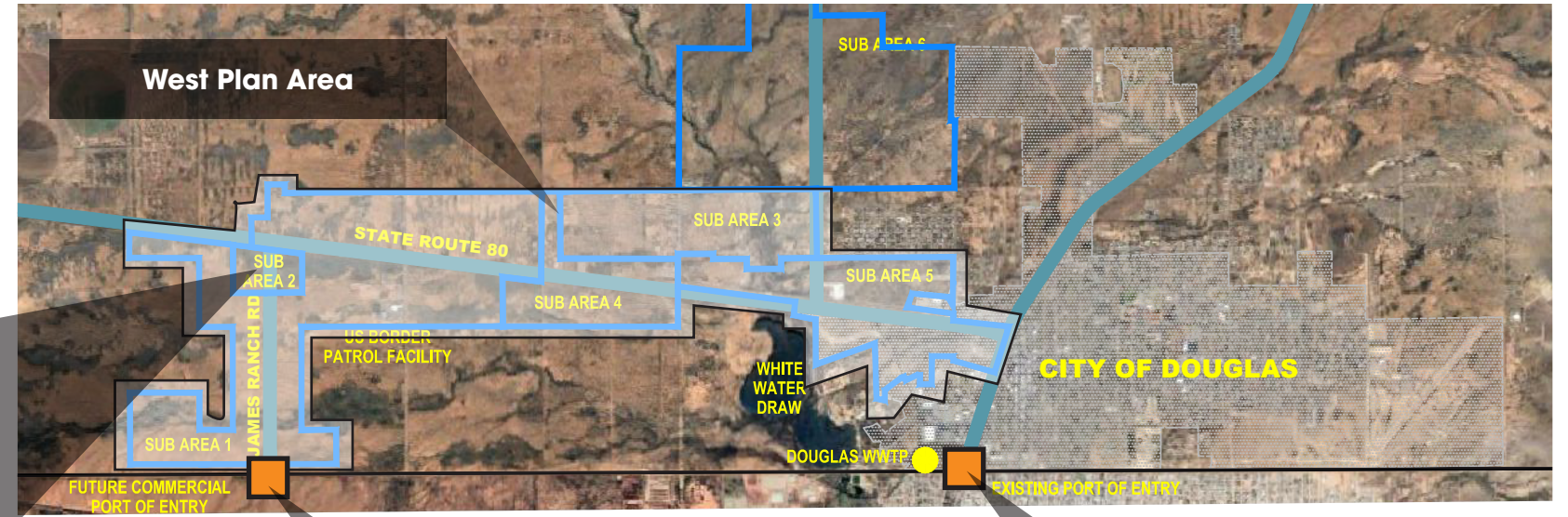
Wastewater System Alternatives in West Plan Area (Slide 34)



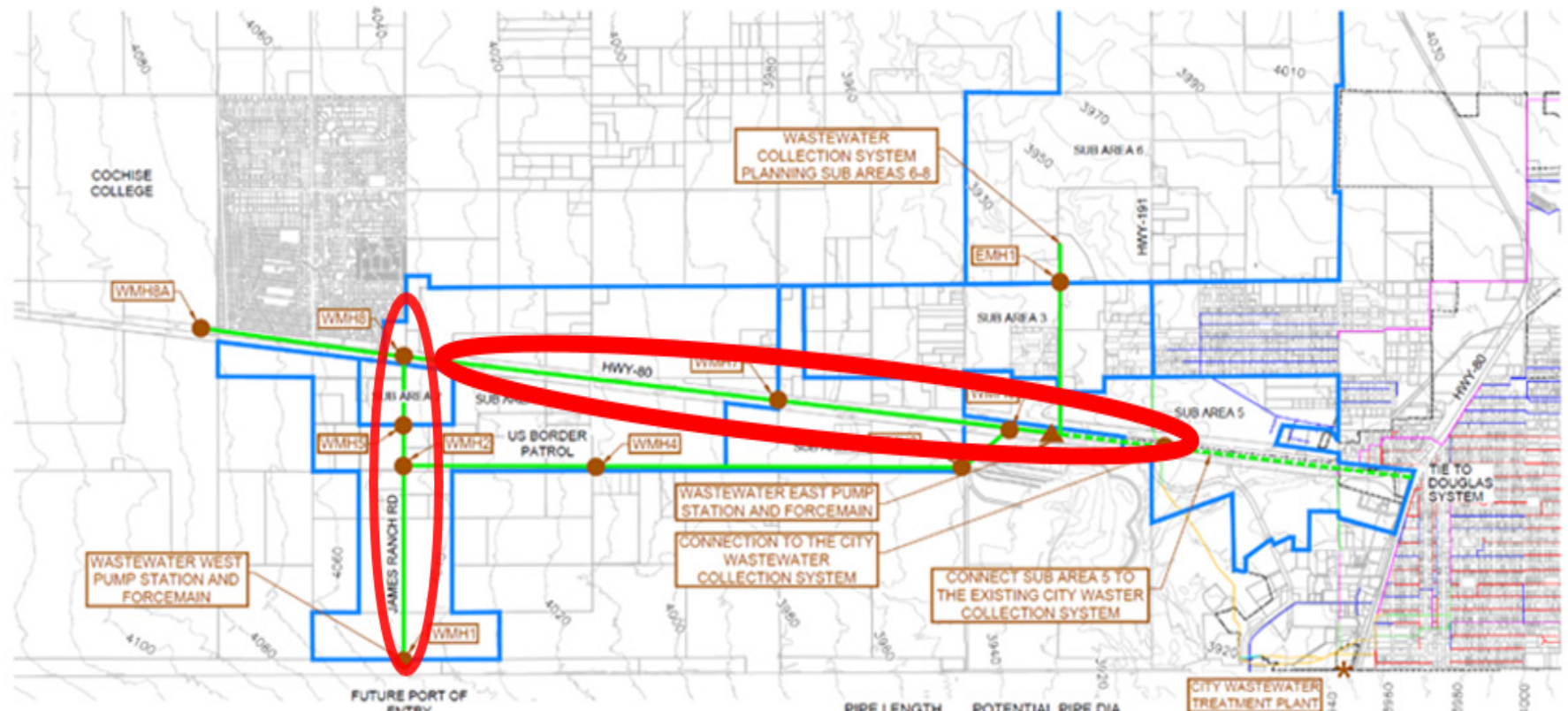
Water and Wastewater Feasibility Study for the Douglas Commercial Port of Entry

January 27, 2020 | Stantec Consulting Services Inc.

WEST PLAN AREA WASTEWATER SYSTEM



HWY 80 Alignment Trunk Wastewater Collection System - Planning Sub Area 1-5, Douglas POE



- LEGEND**
- UTILITY PLANNING AREA
 - CITY OF DOUGLAS LIMITS
 - 6" SANITARY SEWER LINES
 - 8" SANITARY SEWER LINES
 - 10" SANITARY SEWER LINES
 - 12" SANITARY SEWER LINES
 - 15" SANITARY SEWER LINES
 - 18" SANITARY SEWER LINES
 - 21" SANITARY SEWER LINES
 - CONCEPT WASTEWATER ALIGNMENT
 - FORCEMAIN

PIPE	PIPE LENGTH (FEET)	POTENTIAL PIPE DIA. (INCHES)
WMH1 - WMH2	5600 LF	6" FORCEMAIN
WMH2 - WMH4	5480 LF	8"
WMH4 - WMH3	10520 LF	10"
WMH3 - WMH6	1870 LF	12"
WMH2 - WMH5	1220 LF	8"
WMH5 - WMH8	1990 LF	10"
WMH8 - WMH7	10800 LF	8"
WMH7 - WMH6	6680 LF	12"
WMH8 - WMH8A	5860 LF	8"
WMH6 - PUMP STATION	1230 LF	15"
PUMP STATION - CONNECTION	3100 LF	24"



3133 West Frye Road, Suite 300
Chandler, AZ 85226
www.stantec.com

COCHISE COUNTY PROCUREMENT DEPARTMENT
1415 MELODY LAND, BUILDING C
BISBEE, ARIZONA 85603

HWY 80 Alignment
Trunk Wastewater Collection System -
Planning Sub Area 1-5, Douglas POE

2042 584400

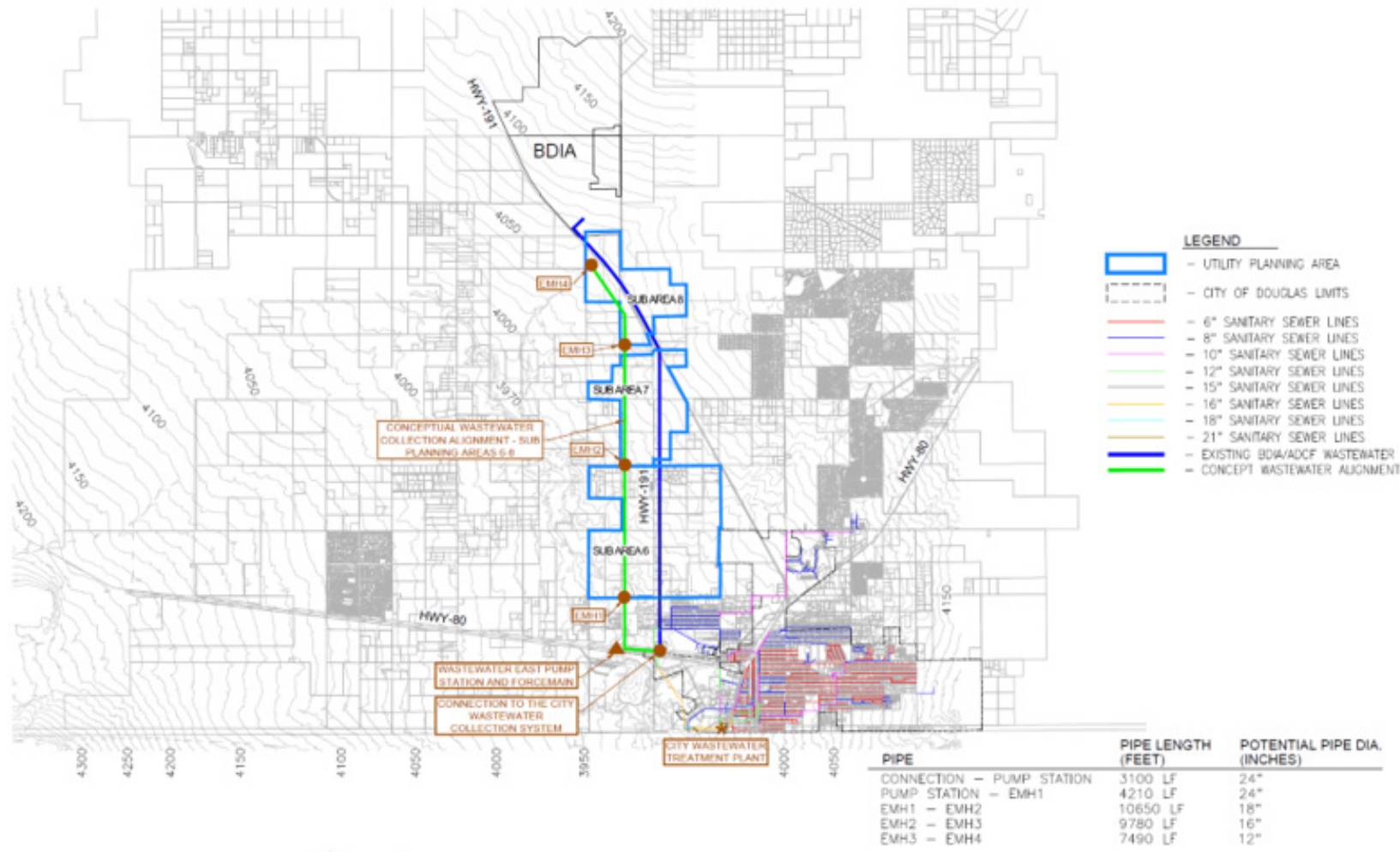
2-7



Water and Wastewater Feasibility Study for the Douglas Commercial Port of Entry

January 27, 2020 | Stantec Consulting Services Inc.
NORTH PLAN AREA WASTEWATER SYSTEM

SEWER ROUTE TO BISBEE - DOUGLAS INTERNATIONAL AIRPORT



Stantec
3133 West Frye Road, Suite 300
Chandler, AZ 85226
www.stantec.com

COCHISE COUNTY PROCUREMENT DEPARTMENT
1415 MELODY LAND, BUILDING C
BISBEE, ARIZONA 85603

Concept Wastewater Collection Trunk System - Planning Sub Area 6-8

2042 584400

HORIZONTAL SCALE: AS SHOWN VERTICAL SCALE: 1/4" = 10'

FIGURE 29

