

Cochise County BOS Work Session

COVID-19 Overview



Cochise Health and
Social Services

10/8/2021

COVID-19 Work Session 10/8/21

Agenda

Welcome and Opening Remarks – Alicia M. Thompson, DrPH, LMSW

Hospitals Update – Heather Gammon, Director Patient Safety & Quality, Canyon Vista Medical Center
– Dr. Janet Clark, Emergency Dept. Manager, Copper Queen Community Hospital
– Bill Hopkins, Director of Operations, Northern Cochise Hospital

CASPER of Cochise County – Martha Montano, CHSS Lead Epidemiologist

COVID-19 Trends

- **Case Counts** – Martha Montano, CHSS Lead Epidemiologist
- **Breakthrough Cases** – Martha Montano, CHSS Lead Epidemiologist
- **Vaccine Overview** – Alicia M. Thompson, DrPH, LMSW

Common Myths about COVID-19 Vaccine – Alicia M. Thompson, DrPH, LMSW

School Update – Daniel Williamson, MPH – School Epidemiologist

Q&A - BOS

Hospitals Update

■ Canyon Vista Medical Center –

- Heather Gammon, BSN, RN, CCRN-K, CPHQ, CSPDT – Director of Patient Safety & Quality
- **35% of Beds are COVID-19 Patients**
- **100% of Hospitalized COVID-19 Patients are Not Vaccinated**
- **Canyon Vista Hospital ED is seeing 70 to 100 people per day with COVID-19 Like Illness, some being seen in ED are fully vaccinated but none have been hospitalized**
- **7 patients have received monoclonal antibody treatment in the last week**
- **6 COVID vaccinations have been provided to patients in the last 2 weeks**

Hospitals Update

- **Copper Queen Community Hospital- September 2021**
 - **37.2 % of Beds are COVID-19 Patients**
 - **68.75% of Hospitalized COVID-19 Patients are Not Vaccinated**
 - **Emergency Department is seeing 5 to 10 individuals with COVID-19 like illness per day**
 - **30 patients have received monoclonal antibody therapy in September**
 - **8 this week**
 - **Average time to transfer**
 - **Douglas Emergency Department (DED) – 3 hours 45 minutes**
 - **Bisbee Emergency Department (BED) – 4 hours 30 minutes**
 - **Transfer time break downs:**
 - **Less than 60 minutes:**
 - **DED – 8, BED - 2**
 - **61-120 minutes:**
 - **DED – 18, BED - 13**
 - **120-240 minutes:**
 - **DED – 17, BED - 20**
 - **Greater than 241 minutes:**
 - **DED – 23 (20 hours was the longest hold), BED – 19 (34 hours was the longest hold)**



CASPER Community Assessment for
Public Health Emergency
Response **Toolkit**

Third Edition 3.2



Centers for Disease
Control and Prevention
National Center for
Environmental Health

CASPER

Nov. 2nd 3rd 4th

2021

Martha Montaña

CASPER

Community Assessment for Public Health Emergency Response

- CASPER is a rapid needs assessment.
- Epidemiologic technique to provide public health leaders household-based information about a community.
- Quick, reliable, relatively inexpensive and flexible.
- Can be conducted during a disaster or non-disaster situation.
- Information gathered can be used to initiate public health action, identify information gaps, facilitate disaster planning, allocate resources and assess new or changing needs in the community.

CASPER

Questionnaire, Survey Teams and Community Notification

- A CASPER can be conducted in 1-3 days.
- Results produced within 36 hours of completion of field data collection.
- Questionnaire created specifically for Cochise County residents.
- All questions will be worded to collect household-level data since CASPER is a household-level survey technique.
- To streamline data collection, surveys will be collected in the field on tablets using the EpiCollect5 application, while households follow along on a paper-based version.

CASPER

- Survey teams will be comprised of:
 - Cochise health department staff
 - Emergency responders
 - Volunteers
- All team members will be required to attend Just-In-Time training prior to field work.
- We will notify the public of the CHA/COVID-19 CASPER through a press release.

CASPER Objectives

COVID-19

- To assess the impact of the coronavirus pandemic on Cochise households
- Assess COVID-19 community awareness, opinions and concerns
- Useful in targeting communication and education messages surrounding COVID-19
- Can ready the Public Health workforce for conducting a CASPER during a disaster response.

CASPER Objectives

COVID-19

- Knowledge, attitudes, and practices around COVID-19
- Financial impacts
- Mental Health impacts
- Communication sources
- Current resource gaps

CASPER Methodology

CASPER is a two-stage cluster sampling methodology

- Validated two-staged cluster sampling methodology developed by the Centers for Disease Control and Prevention (CDC)
- Area of interest (sampling frame): Occupied housing units in ALL of Cochise County
- First sampling stage is cluster selection: Randomly selection of 30 census blocks.
- Second sampling stage, Household selection: Within each census block, systematically select 7 households.
- Ultimate target of 210 surveys (30 clusters x 7 surveys per cluster)
- Information obtained is generalizable to the entire sampling frame, providing population-based estimates

CASPER Sharing our findings

- Disseminating findings with leadership and key stakeholders
- Share our recommendations based on COVID-19 data analysis
- A final report will be developed and distributed widely to all interested parties including state health authorities, emergency operations center, and other emergencies.

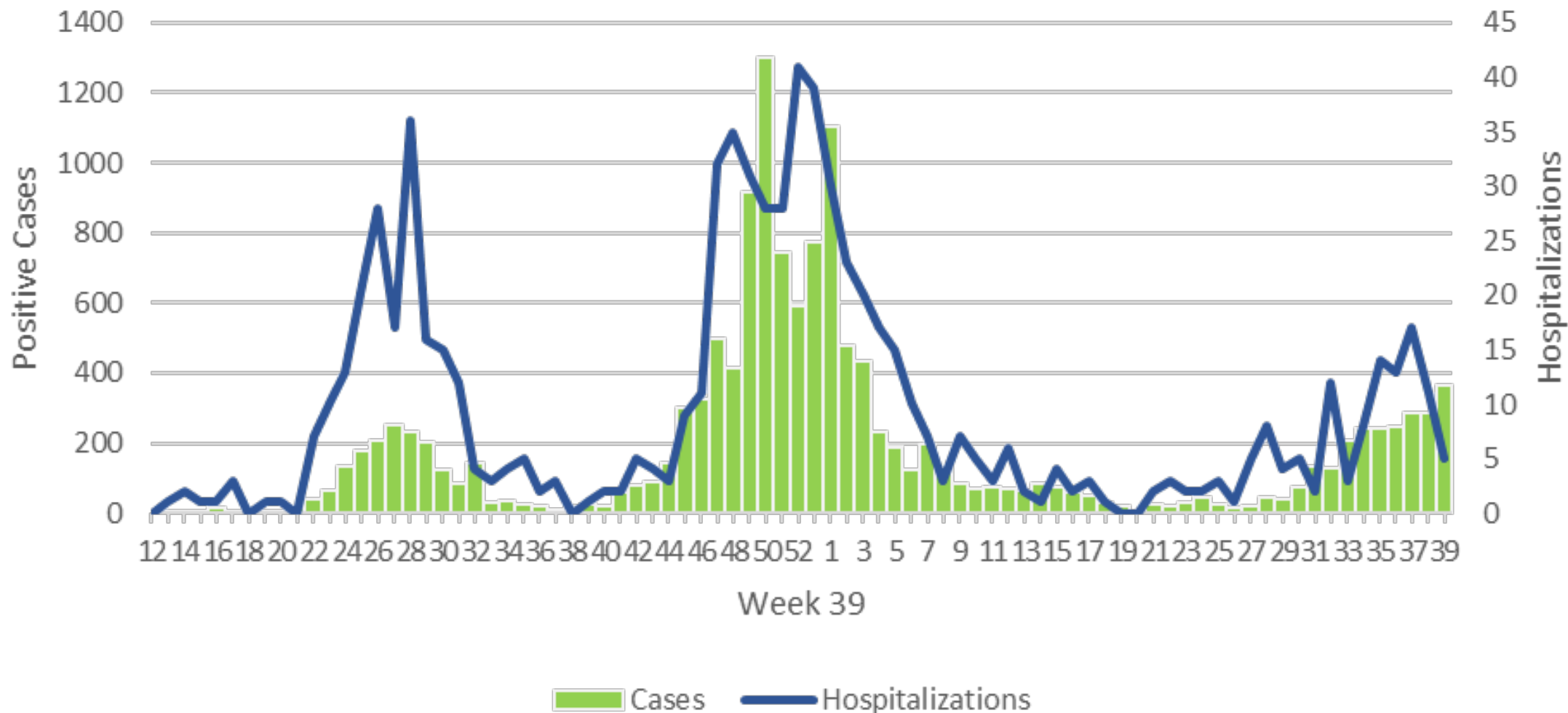
CASPER

Questions?

COVID-19 Work Session 10/8/21

Cases & Hospitalizations

Cases and Case Hospitalizations by MMWR Week



COVID-19 Work Session 10/8/21

Cases & Hospital Visits

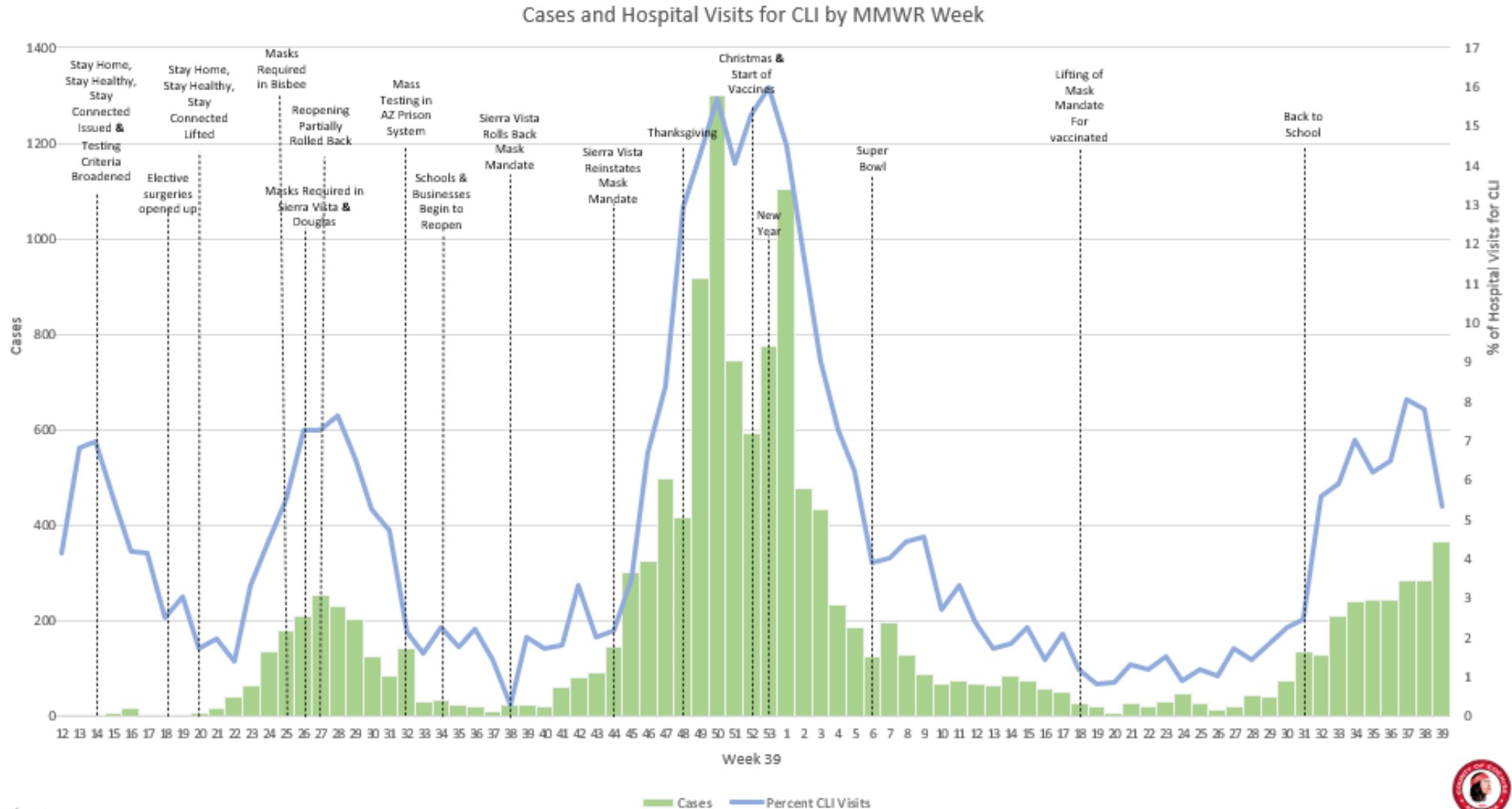


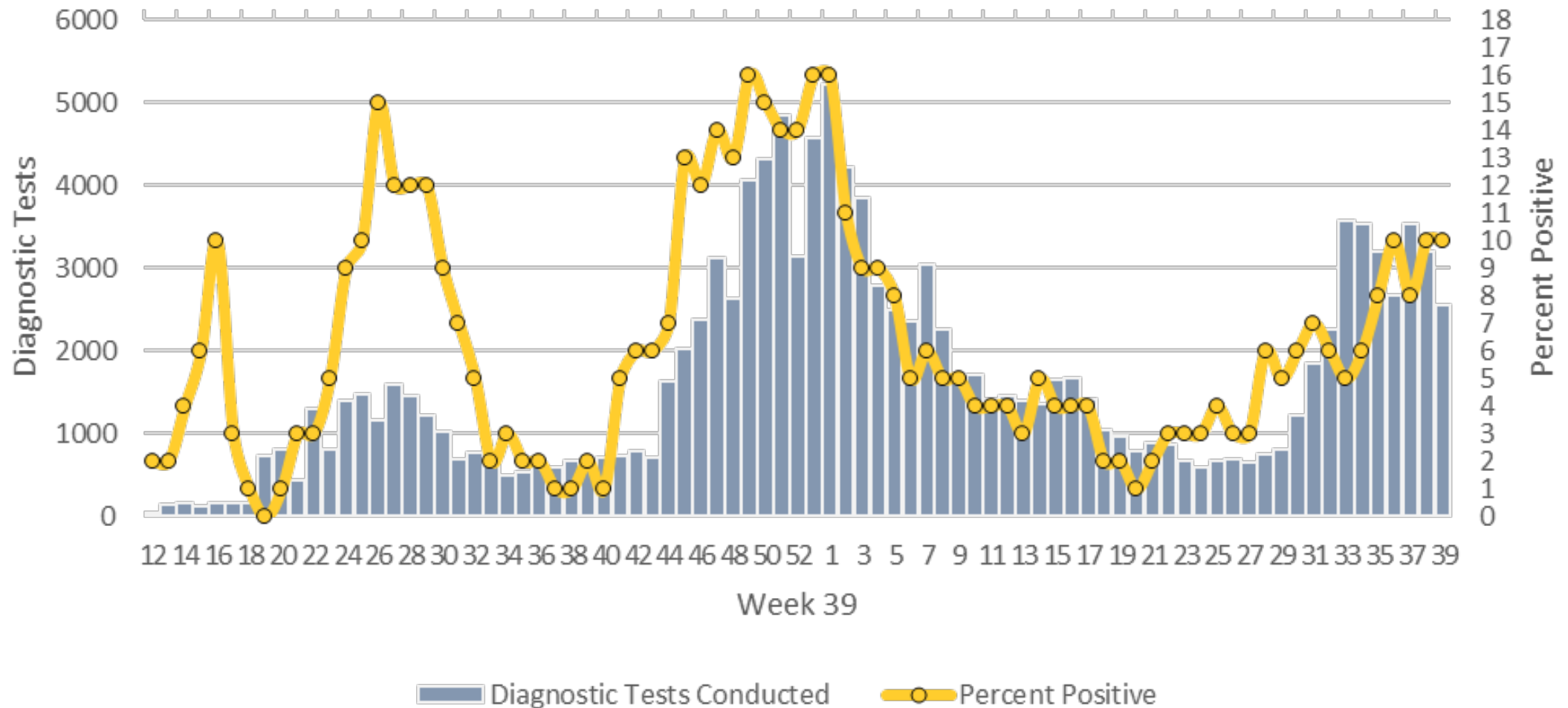
Chart 4



COVID-19 Work Session 10/8/21

% Positive

Diagnostic Tests and Percent Positive by MMWR Week



As 10/6/2021 for Cochise County

Confirmed cases:	13,980 (+598)
Hospitalizations:	850 (+29)
Deaths:	330 (+9)

COVID-19 Work Session 10/8/21

COVID-19 Trends

As of 10/7/21

Breakthrough Cases in Cochise County

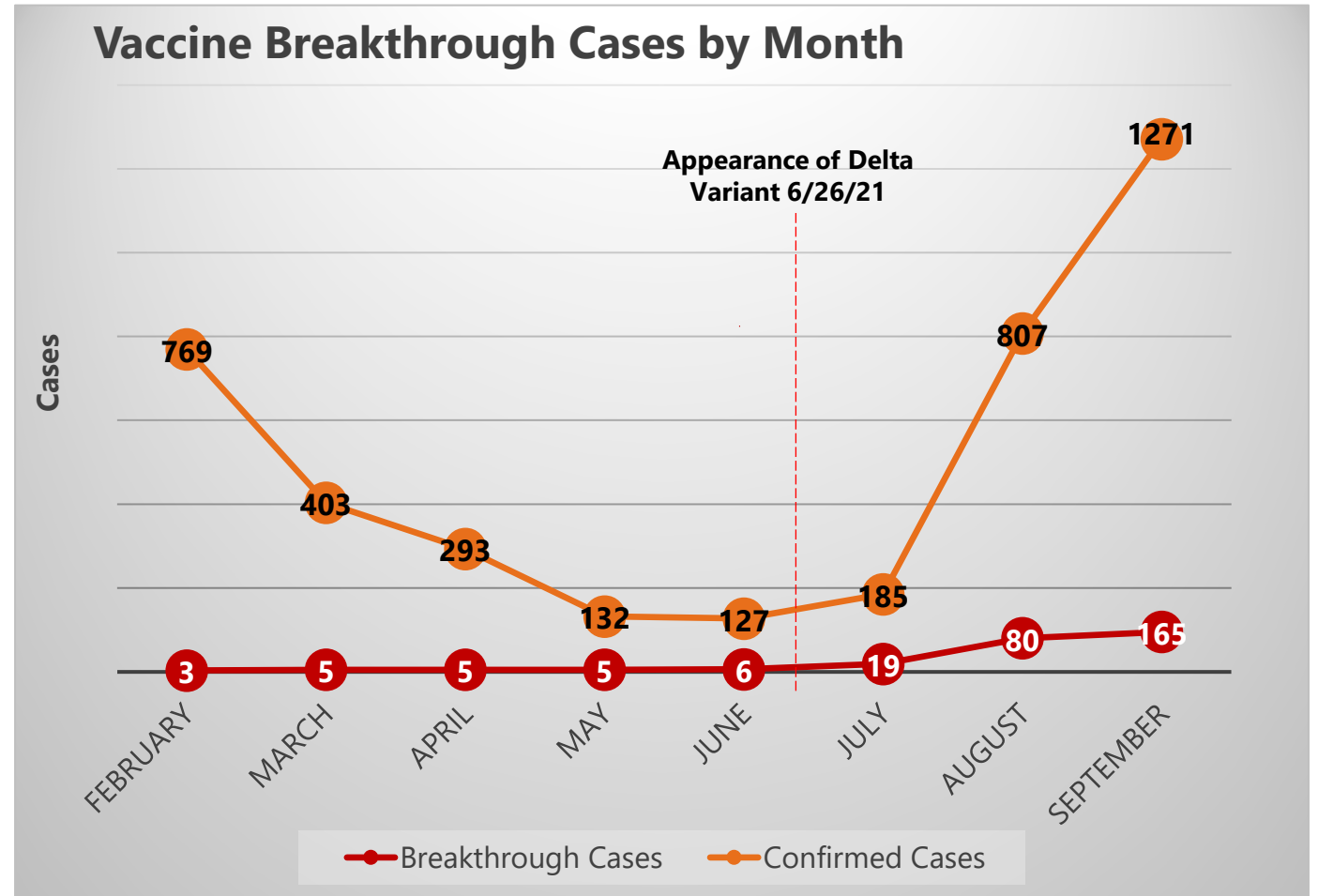
Month	Breakthrough Cases	Confirmed Cases
February	3	769
March	5	403
April	5	293
May	5	132
June	6	127
July	19	185
August	80	807
September	165	1,271
October	13	317
Total	301	4,304

Pre-Delta (before 6/26/2021) vaccine breakthrough:

24 out of **12,211** cases (**0.2%**)

Post-Delta (on or after 6/26/2021) vaccine breakthrough:

277 out of **2,580** cases (**10.7%**)



A vaccine breakthrough case is an Arizona resident who has SARS-CoV-2 RNA or antigen detected on a respiratory specimen collected ≥ 14 days after completing the primary series of an FDA-authorized SARS-CoV-2 vaccine.

As of 10/6/21

Vaccines Administered: 128,355 (+2,082)

Percent of people fully vaccinated:

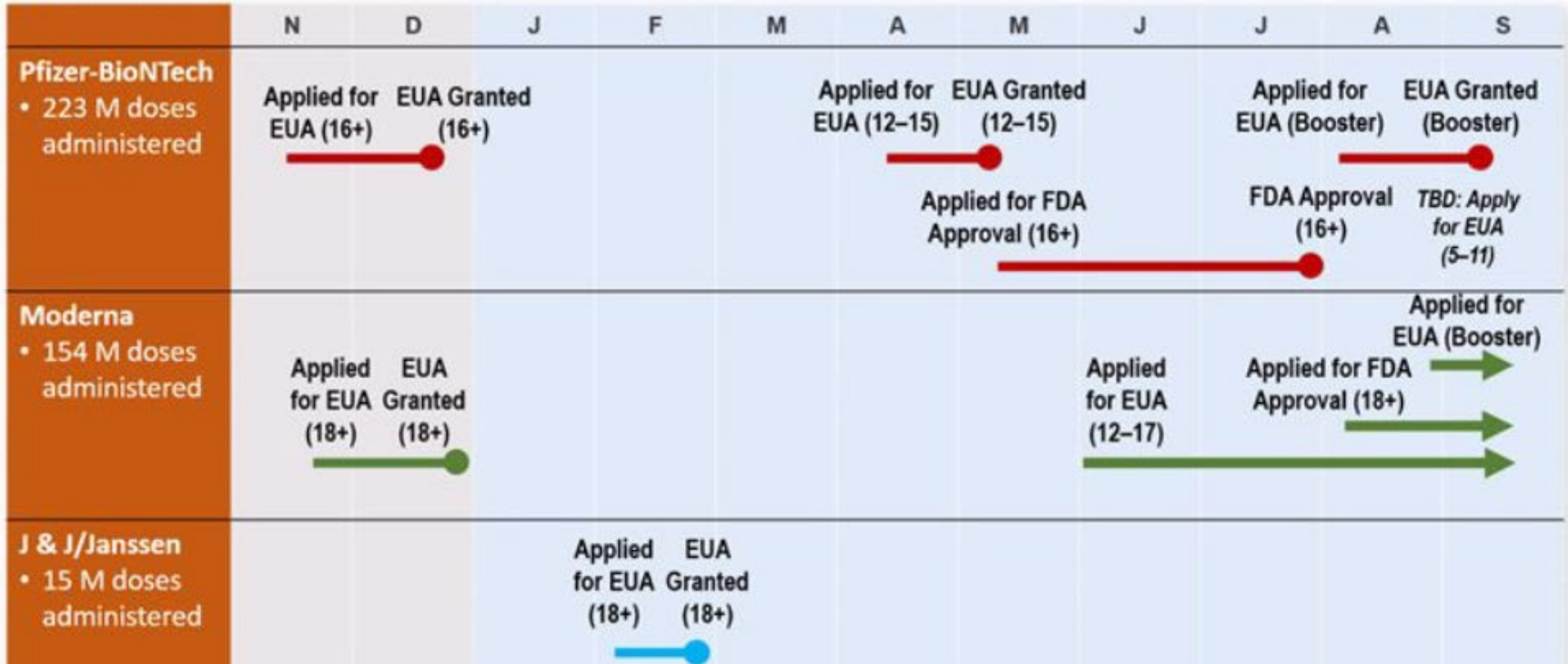
63,093 divided by 130,808 = 48.2%

Increase of 2,082 individuals fully vaccinated since 9/24/21

Percent of people who have received at least one dose of vaccine:

71,550 divided by 130,808 = 54.7%

What's in the Regulatory Pipeline?



Pfizer / Biontech released data on trial in children 5 to 11 on 9/20/2021

Emergency Use Authorization for 5- to 11-year-olds submitted to FDA on 10/7/2021

5- to 11-year-old Pfizer has separate dosages and packaging from Adult vaccine. Adult vaccine CANNOT be used for children.

CHSS MythBusters on COVID-19 Vaccine

- **Myth** – mRNA technology is too new
 - **FACT:** mRNA technology was first promoted in 1989
 - **Reference:** Maloney RW, Felgner PL, Verma IM. Cationic liposome-mediated RNA transfection. *Proc Natl Acad Sci U S A*. 1989;86:6077–81. doi: 10.1073/pnas.86.16.6077.
 - **FACT:** the first mRNA Flu vaccine was tested in mice in the 1990s
 - **Reference:** [The Long History of mRNA Vaccines | Johns Hopkins Bloomberg School of Public Health \(jhu.edu\)](#)
 - **FACT:** Cancer research uses mRNA technology to trigger the immune system to target specific cancer cells
 - **Reference:** [The Renaissance of mRNA-based cancer therapy - PubMed \(nih.gov\)](#)

COVID-19 Testing should be free

We are receiving reports of some locations charging for testing

– please report any location charging for testing to
publichealth@cochise.az.gov

As of 10/6/21

- **508** school related cases since the start of the semester (8/4/21).
 - Up **156** (44%) cases from last meeting.
- **3** COVID-19 related pediatric hospitalizations since the start of the semester.
 - **8** total since the start of the pandemic.
- **40/66** schools meeting the outbreak definition.
 - Up **13** schools from last meeting.
- **1** school engaged in state funded pool testing.

COVID-19 Work Session 9/24/21

Q & A / Comments

QUESTIONS/COMMENTS?