

Cochise County BOS Work Session

COVID-19 Overview



Cochise Health and
Social Services

10/22/2021

COVID-19 Work Session 10/22/21

Agenda

Welcome and Opening Remarks – Alicia M. Thompson, DrPH, LMSW

Update on CASPER of Cochise County – Martha Montano, CHSS Lead Epidemiologist

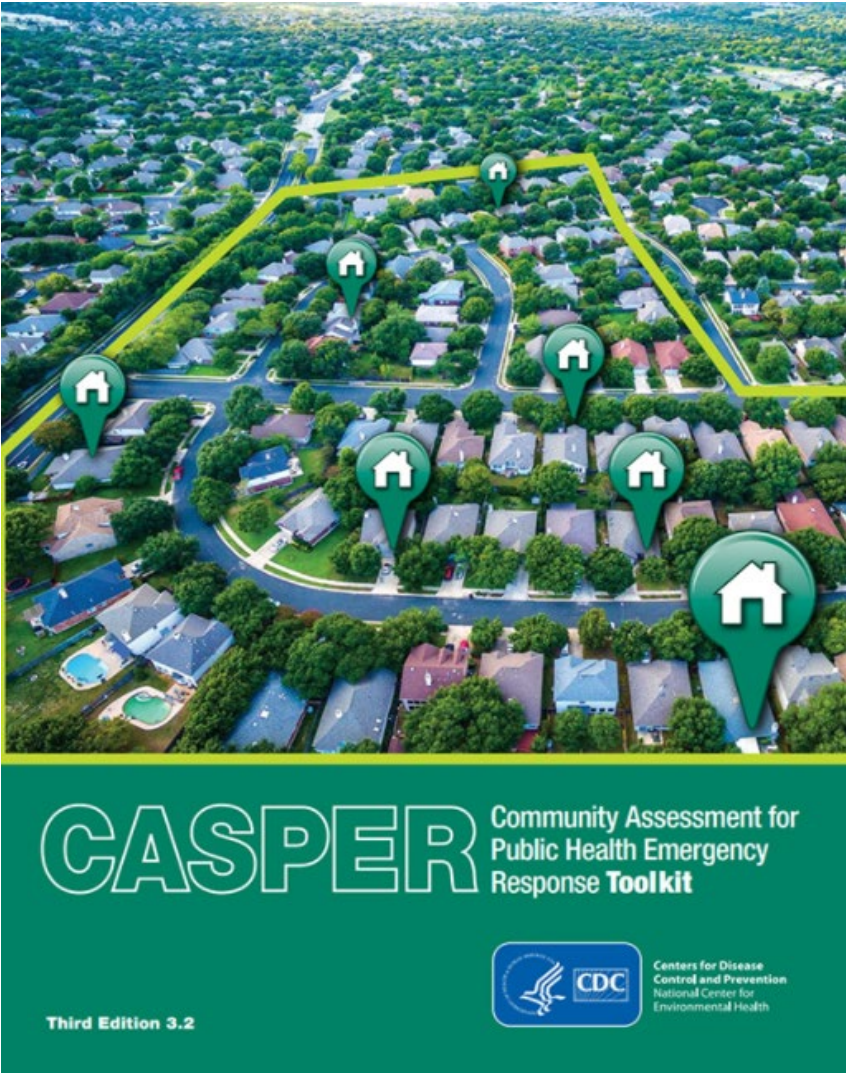
COVID-19 Trends

- **Case Counts** – Martha Montano, CHSS Lead Epidemiologist
- **Breakthrough Cases** – Martha Montano, CHSS Lead Epidemiologist
- **Vaccine Overview** – Alicia M. Thompson, DrPH, LMSW

Common Myths about COVID-19 Vaccine – Alicia M. Thompson, DrPH, LMSW

School Update – Daniel Williamson, MPH – School Epidemiologist

Q&A - BOS

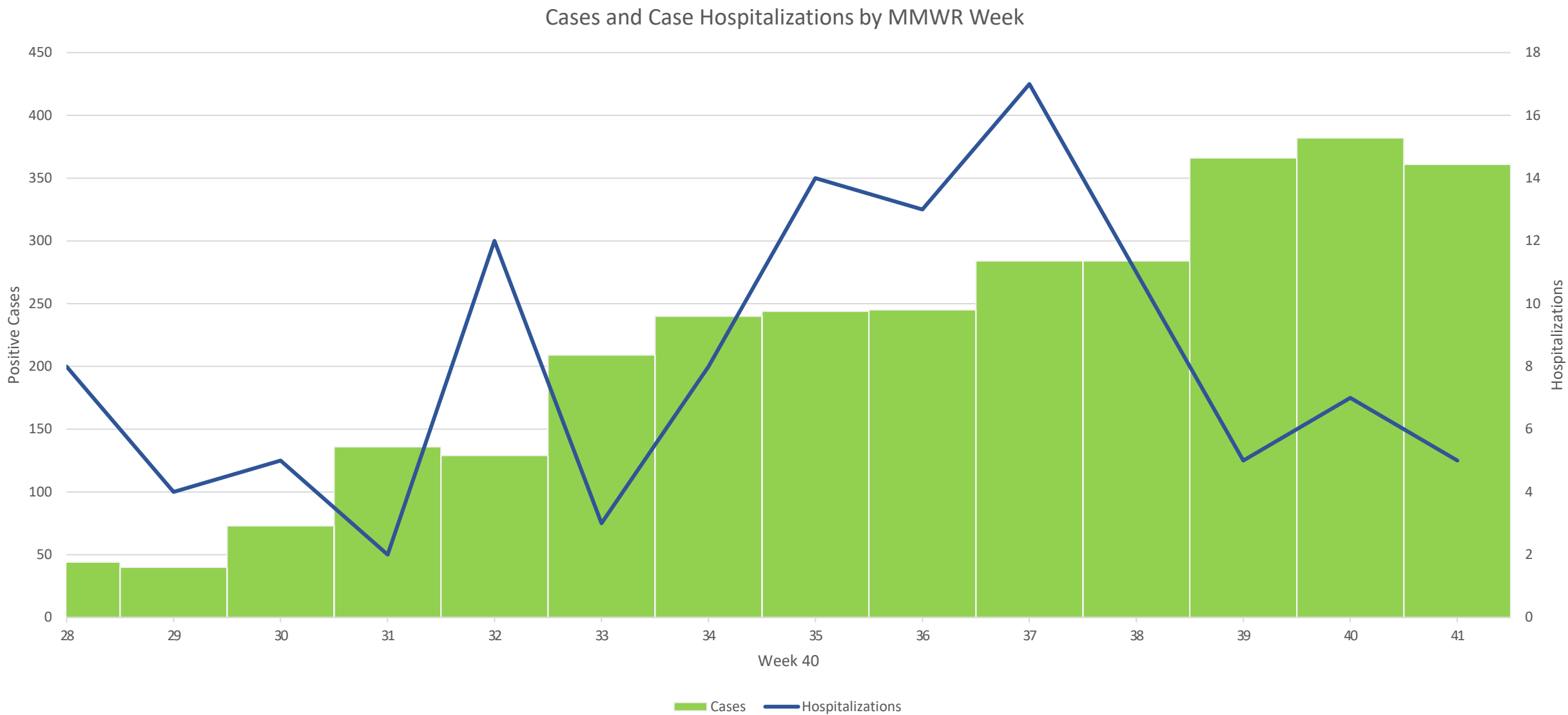


CASPER
Nov. 2nd 3rd 4th
2021
Postponed

Martha Montaña

COVID-19 Work Session 10/22/21

Cases & Hospitalizations



COVID-19 Work Session 10/22/21

Cases & CLI ED Visits

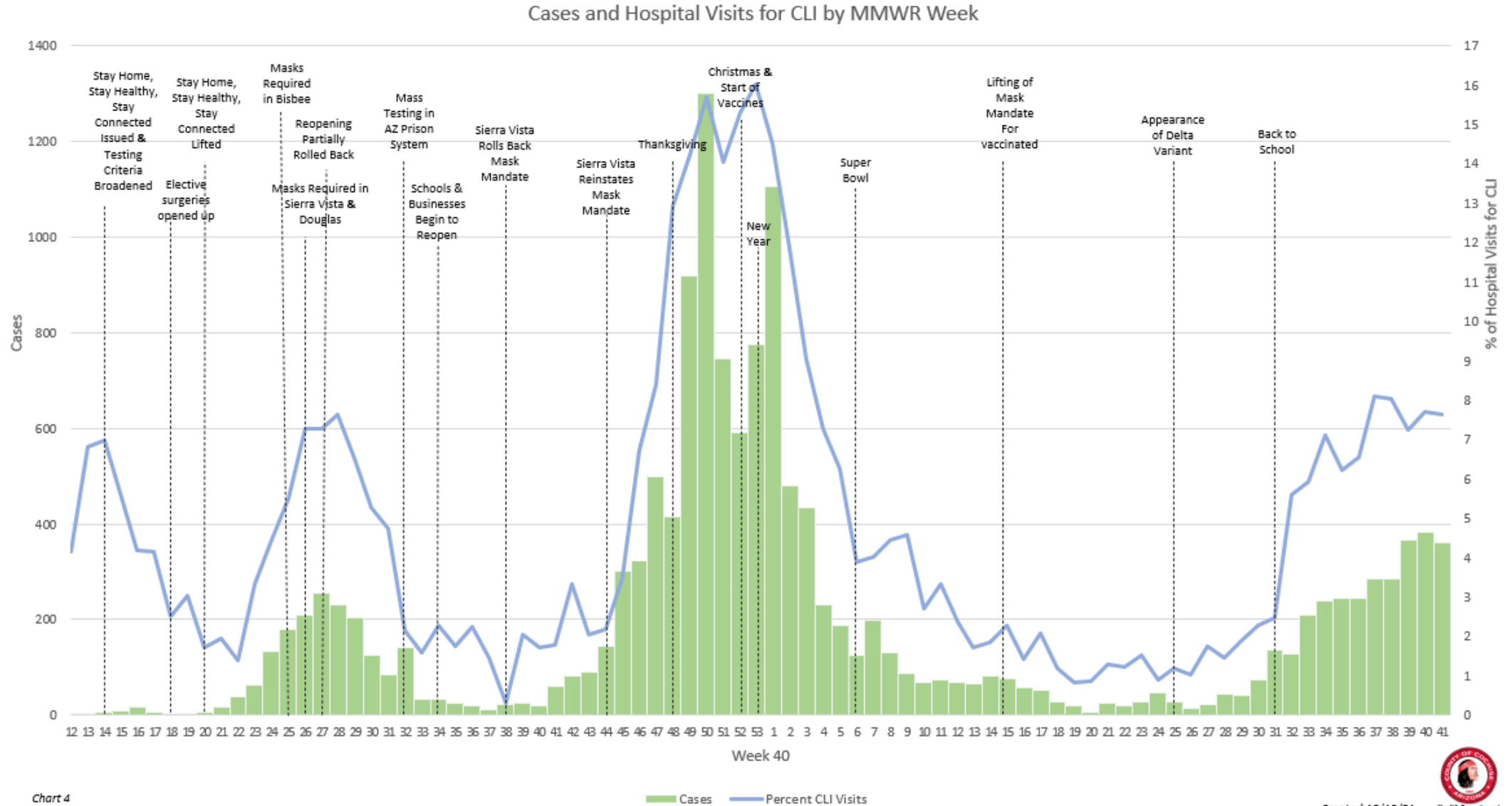
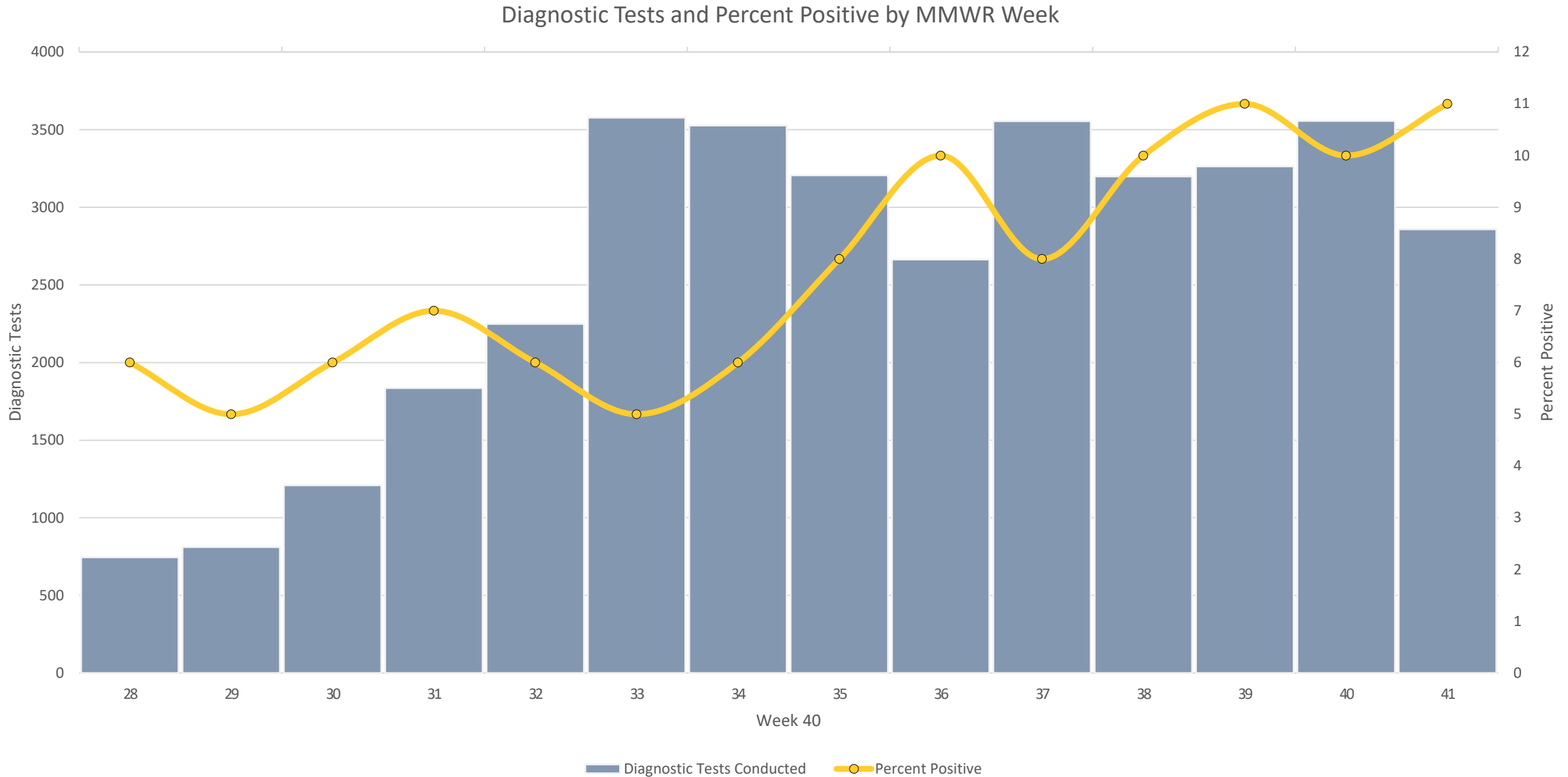


Chart 4



COVID-19 Work Session 10/22/21

% Positive



As 10/20/2021 for Cochise County

Confirmed cases:	15,328 (+1,348)
Hospitalizations:	872 (+22)
Deaths:	335 (+5)

As of 10/19/21

Breakthrough Cases in Cochise County

Month	Breakthrough Cases	Confirmed Cases
February	3	769
March	5	403
April	5	293
May	5	132
June	6	127
July	19	185
August	80	807
September	172	1,272
October	106	905
Total	401	

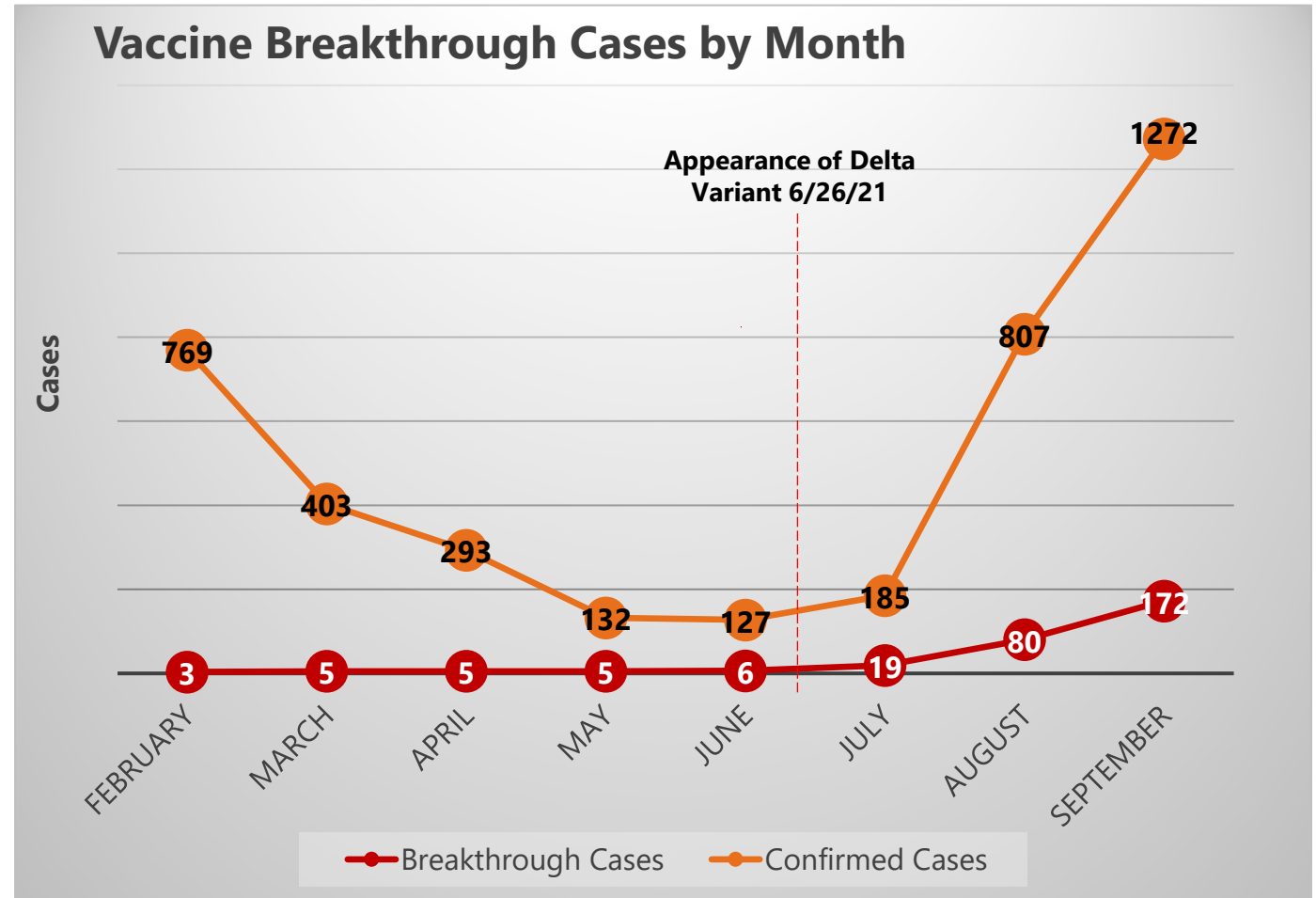
Pre-Delta (before 6/26/2021) vaccine breakthrough:

24 out of **12,211** cases (**0.2%**)

Post-Delta (on or after 6/26/2021) vaccine breakthrough:

377 out of **3,169** cases (**11.9%**)

10 Breakthrough Cases have been Hospitalized



A vaccine breakthrough case is an Arizona resident who has SARS-CoV-2 RNA or antigen detected on a respiratory specimen collected ≥ 14 days after completing the primary series of an FDA-authorized SARS-CoV-2 vaccine.

COVID-19 Work Session 10/22/21 | Updates

ADHS public data dashboards have brand-new changes!

Highlights:

- The *Vaccine Administration* dashboard now displays both **county of residence** (new) & **county of vaccine administration**, each on a separate tab across the top of the screen.
 - The **Summary** page now uses **county of residence** for vaccine data, rather than where the vaccine was administered.
- Hospitalizations & Deaths* dashboards include enhanced ability to filter by county. County-specific demographic information is suppressed for any small numbers.
- Lab data*: Serology and "people tested" metrics have been removed. Test-level data are displayed **for diagnostic tests only**.
- The congregate settings dashboard now uses the date of specimen collection for the first case of the outbreak rather than the date the outbreak was reported.

If you have any questions, email flu@azdhs.gov.

COVID-19 Work Session 10/22/21

Vaccine Dashboard



Vaccine Administration

County of Residence | County of Administration

Date updated: 10/20/2021

Hover for more information.



Doses in Cochise

People in Cochise

Total number of COVID-19 vaccine doses administered: **128,763**

Total number of people who have received at least one dose of COVID-19 vaccine: **70,513**

Total number of doses reported yesterday: **151**

Percent of people vaccinated: **53.9%**

Percent of *eligible* people vaccinated: **62.8%**

Number of people who are fully vaccinated against COVID-19: **62,168**

As of 10/20/21 – NOW COUNTY OF RESIDENCE

Vaccines Administered: 128,763 (+408)

Percent of eligible people fully vaccinated:

62,168 divided by 112,195 = 55.4%

Change to County of Residence AND Denominator

[ADHS - Vaccine Administration \(azdhs.gov\)](http://azdhs.gov)

Definition of Eligible: COVID-19 Vaccine is available for those who are 12 years of age or older, any one 12 years or older is currently considered eligible

Moderna Booster

ACIP & CDC have approved the Moderna Booster 6 months or more after their initial series for the following:

- 65 years and older
- Age 18+ who live in long-term care settings
- Age 18+ who have underlying medical conditions
- Age 18+ who work or live in high-risk settings

These categories are the same as the Pfizer Booster

The booster dose is half of the primary dose

J & J Booster

ACIP & CDC have approved Johnson & Johnson (Janssen) Booster for the following:

- Those who are 18 and older and who were vaccinated two or more months ago.

The booster dose is a full dose, same as the primary dose

ALL Boosters

“Eligible individuals may choose which vaccine they receive as a booster dose. Some people may have a preference for the vaccine type that they originally received and others, may prefer to get a different booster. CDC’s recommendations now allow for this type of mix and match dosing for booster shots.

[CDC Expands Eligibility for COVID-19 Booster Shots | CDC Online Newsroom | CDC](#)

Where to go for your COVID-19 Booster Dose

Because Vaccine is widely available in Cochise County, and providers are ordering vaccine directly – please contact your primary provider or go to a local pharmacy to receive your booster dose.

Pfizer for 5 to 11 Year Olds

5- to 11-year-old Pfizer has separate dosages and packaging from Adult vaccine. Adult vaccine CANNOT be used for children.

FDA plans to meet October 26, and ACIP/CDC plan to meet November 2nd & 3rd to decide on EUA

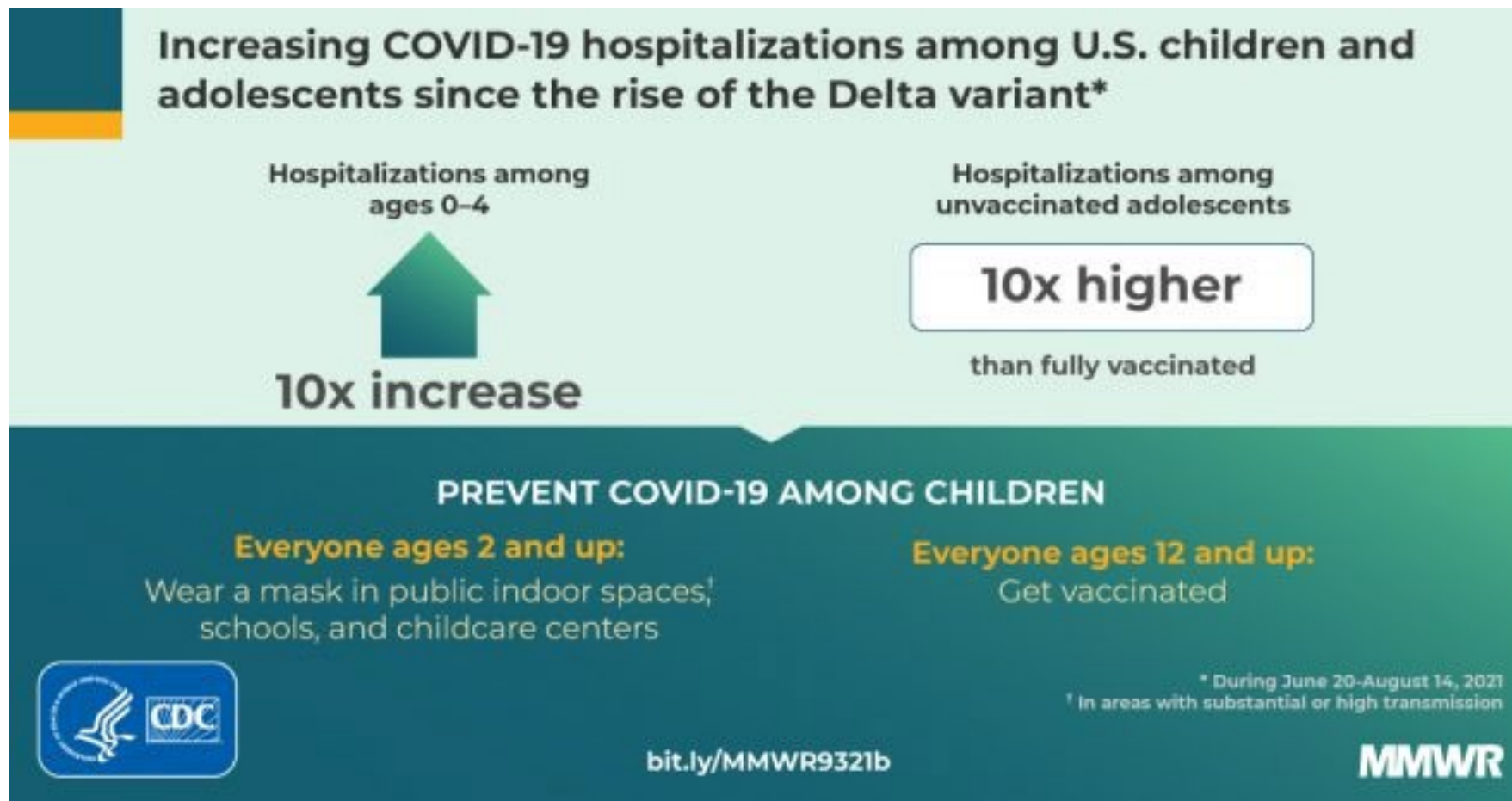
No other COVID-19 vaccine for 5- to 11-year-olds at this time

To start on-boarded vaccine providers will order pediatric Pfizer doses through the Health Department

CHSS MythBusters on COVID-19 Vaccine

- **Myth** – Children don't get severe illness from COVID-19

- **FACT:**



Suggested citation for this article: Delahoy MJ, Ujamaa D, Whitaker M, et al. Hospitalizations Associated with COVID-19 Among Children and Adolescents — COVID-NET, 14 States, March 1, 2020–August 14, 2021. MMWR Morb Mortal Wkly Rep 2021;70:1255–1260. DOI: <http://dx.doi.org/10.15585/mmwr.mm7036e2external icon>.

COVID-19 Testing should be free

We are receiving reports of some locations charging for testing

– Please report any location charging for testing to
publichealth@cochise.az.gov

As of 10/20/21

- **590** school related cases since the start of the semester (8/4/21).
 - Up **82** (16%) cases from last meeting.
- **3** COVID-19 related pediatric hospitalizations since the start of the semester.
 - **8** total since the start of the pandemic.
- **42/66** schools meeting the outbreak definition.
 - Up **2** schools from last meeting.
- **1/66** school engaged in state funded pool testing.

COVID-19 Work Session 10/22/21

Q & A / Comments

QUESTIONS/COMMENTS?