



CONSTRUCTION PLANS FOR BISBEE-DOUGLAS INTERNATIONAL AIRPORT

COCHISE COUNTY, ARIZONA

SEAL COAT

ADOT GRANT NUMBER: E2P3R-01C
AIRPORT PAVEMENT MANAGEMENT SYSTEM

GENERAL PROJECT DESCRIPTION:
TAXIWAY A2 CRACK SEAL, SEAL COAT &
PAVEMENT MARKINGS

COORDINATION LIST

TITLE/ROLE	CONTACT	PHONE
DESIGN (KIMLEY-HORN)		
ENGINEER (CIVIL)	STEVEN H REEDER	602-944-5500
CA MANAGER	BRANDON ROBINSON	602-906-1185
ADOT/MPD AERONAUTICS GROUP		
GROUP MANAGER	DON KRIZ	602-712-8333
STATE AIRPORT ENGINEER	MATTHEW MUNDEN	602-712-7647
OWNER		
AIRPORT MANAGER	DAN COXWORTH	520-432-6002

SHEET LIST

SHEET NUMBER	SHEET TITLE
#	COVER SHEET
2	PROJECT LAYOUT PLAN
3	IMPROVEMENT PLAN
4	DETAILS
5	PAVEMENT MARKING PLAN
6	PAVEMENT MARKING DETAILS

PLANS TO BE PRINTED IN COLOR

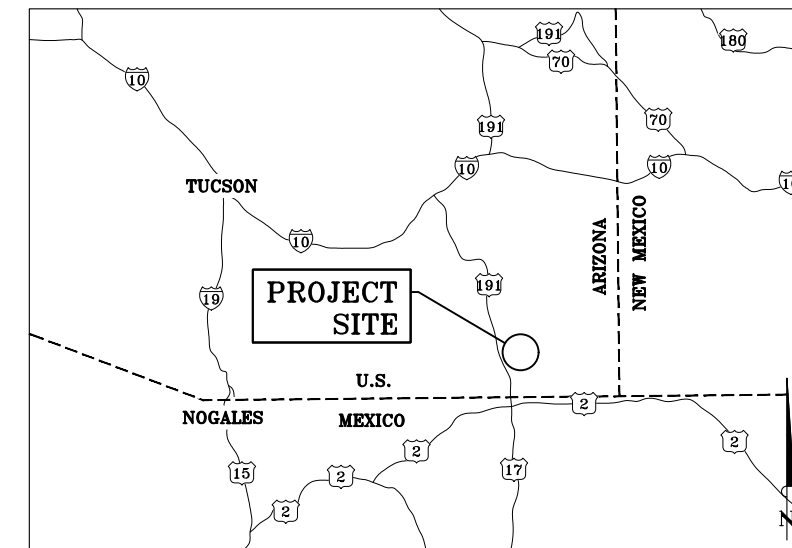
PRINTING OR COPYING PLANS IN BLACK & WHITE (GRAYSCALE) MAY CAUSE DESIGN NOTES, DIMENSIONS, CALLOUTS, ETC. TO BECOME UNREADABLE. OFFICIAL PLAN SETS TO BE USED FOR CONSTRUCTION AND RECORD KEEPING ARE TO BE PRINTED IN COLOR.

ESTIMATED QUANTITIES

Item	Specification Number	Bid Item Description	Quantity	Unit
BASE BID				
1	Item-100	Contractor Quality Control	1	LS
2	Item-101.1	Mobilization/Demobilization (not to exceed 5% of the total bid)	1	LS
3	Item-102.1	Herbicide Application	1,060	LF
4	Item-105.1	Temporary Construction Signage, Barricading and Traffic Control	1	LS
5	Item-107.1	Crack Repair, Type 1 (Cracks >2")	100	LF
6	Item-107.2	Crack Seal, Type 2 (Cracks 1" to 2")	960	LF
7	Item-107.3	Crack Seal, Type 3 (Cracks 1/4" to 1")	7,400	LF
8	Item-159.1	High Density Stress Relief Interlayer (18" Wide)	100	LF
9	Item-608.2	Emulsified Asphalt Seal Coat	4,620	SY
10	Item-620.1	Temporary Pavement Markings (Yellow)	800	SF
11	Item-620.2	Temporary Pavement Markings (White)	240	SF
12	Item-620.4	Pavement Markings (Yellow)	800	SF
13	Item-620.5	Pavement Markings (White)	240	SF
14	Item-620.6	Pavement Markings Obliteration	1,040	SF



LOCATION MAP
N.T.S.



VICINITY MAP
N.T.S.

NO.	REVISION	DATE

Kimley»Horn
© 2022 KIMLEY-HORN AND ASSOCIATES, INC.
7740 North 16th Street, Suite 300
Phoenix, Arizona 85020 (602) 944-5500



SCALE (H): N/A
SCALE (V): N/A
DESIGNED BY: BLR
DRAWN BY: HK
CHECKED BY: SHR
DATE: 03/16/22

ARIZONA DEPARTMENT
OF TRANSPORTATION
MULTIMODAL PLANNING DIVISION
AERONAUTICS GROUP
1801 WEST JEFFERSON STREET
PHOENIX, ARIZONA 85007



BISBEE MUNICIPAL AIRPORT
COVER SHEET
SEAL COAT




PROJECT NO.
191842000
DRAWING NAME
Bisbee Douglas-CV.dwg

K:\Fly Aviation\191842000 - ADOT APMS\2022B (additive projects)\Bisbee-Douglas International\Design\CADD\Bisbee Douglas-CV.dwg Apr 11, 2022 Sandra Quiroz Ramirez
KREYER, INC. THIS DOCUMENT, TOGETHER WITH THE CONCEPTS AND DESIGN PRESENTED HEREIN, IS INTENDED ONLY FOR THE SPECIFIC PURPOSE AND CLIENT FOR WHICH IT WAS PREPARED. REUSE
OF AND IMPROPER RELIANCE ON THIS DOCUMENT WITHOUT WRITTEN AUTHORIZATION AND ADAPTATION BY KIMLEY-HORN AND ASSOCIATES, INC. SHALL BE WITHOUT LIABILITY TO KIMLEY-HORN AND ASSOCIATES, INC.

POINT TABLE

POINT NUMBER	LATITUDE	LONGITUDE	DESCRIPTION
1	31°28.430585' N	109°36.269198' W	END OF RUNWAY 17
2	31°27.370300' N	109°36.264912' W	END OF RUNWAY 35

DURATION TABLE






STEP/AREA	DESCRIPTION OF WORK	DURATION
STEP 1 	PREPARATION WORK HERBICIDE APPLICATION (TREATMENT PERIOD)	2 DAYS MAX (14 DAYS MIN)
STEP 2 	RUNWAY 17-35 AND TAXIWAY A2 CLOSED WORK INCLUDES CRACK SEAL, CRACK REPAIR, SEAL COAT AND TEMPORARY PAVEMENT MARKINGS	5 DAYS
STEP 3 	(PAVEMENT CURING PERIOD) FINAL PAVEMENT MARKINGS	(14 DAYS MIN) 2 DAYS MAX

PHASING NOTES:

- HERBICIDE TO BE COORDINATED WITH AIRPORT AND COMPLETED 14 DAYS (MINIMUM) PRIOR TO CRACK-SEAL/SEAL COAT ACTIVITIES.
- ALL ACTIVITIES INCLUDING TEMPORARY PAVEMENT MARKING TO BE COMPLETED PRIOR TO STARTING A NEW PHASE AND/OR OPENING THE CLOSED RUNWAY/TAXIWAYS.
- TEMPORARY MARKINGS SHALL BE COMPLETED FOR EACH PHASE OF THE PROJECT (AS NECESSARY).
- FINAL MARKINGS SHALL BE COORDINATED WITH AIRPORT AND COMPLETED 14 DAYS AFTER FINAL PAVING DAY.

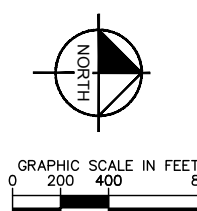
THE CONTRACT DURATION FOR THIS PROJECT IS 40 CONSECUTIVE CALENDAR DAYS. THIS PROJECT INCLUDES SPECIAL PHASING THAT REQUIRES THAT ALL WORK BE COMPLETED WITHIN THE LIMITS OF ONE PHASED WORK AREA BEFORE STARTING WORK IN THE NEXT PHASED WORK AREA. THIS PHASING WAS DEVELOPED TO MINIMIZE THE DISRUPTION TO THE ENTIRE AIRFIELD. TO AIDE THE CONTRACTOR IN SCHEDULING TASKS WITHIN EACH PHASE IS PROVIDED.

LEGEND

-  PROJECT AREA: SEAL COAT
-  CONTRACTOR'S STAGING AREA (CONTRACTOR TO COORDINATE ACTUAL LOCATION WITH AIRPORT PRIOR TO STARTING CONSTRUCTION)
-  LIGHTED X (TO BE PROVIDED/ MAINTAINED BY CONTRACTOR)
-  LOW PROFILE BARRICADES (TO BE PROVIDED/MAINTAINED BY CONTRACTOR)
-  HAUL ROUTE / SITE ACCESS

GENERAL NOTES:


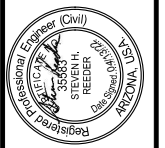

- THE CONTRACTOR SHALL NOT START WORK UNTIL A N.T.P. HAS BEEN ISSUED BY ADOT.
- THE CONTRACTOR SHALL COORDINATE ANY NECESSARY CLOSURES WITH THE AIRPORT, PRIOR TO STARTING WORK.
- THE CONTRACTOR SHALL VERIFY THE BARRICADES AND LIGHTED X'S FOR EACH PHASE OF THE PROJECT ARE IN THE CORRECT LOCATION, ARE PROPERLY SECURED, AND ARE IN PROPER WORKING ORDER PRIOR TO STARTING WORK EACH DAY/NIGHT OF THE PROJECT.
- THE CONTRACTOR SHALL NOT STRAY FROM THE HAUL ROUTE / SITE ACCESS DESIGNATED ON THE PROJECT LAYOUT PLAN.
- THE CONTRACTOR IS RESPONSIBLE FOR MAINTAINING THE HAUL ROUTE / SITE ACCESS DURING THE PROJECT. THE CONTRACTOR WILL REPAIR THE HAUL ROUTE / SITE ACCESS AS NECESSARY AT THE END OF THE PROJECT (AT THE CONTRACTOR'S EXPENSE).
- ALL DIMENSIONS SHOWN ON THE PLANS ARE SCHEMATIC. IF ACTUAL DIMENSIONS VARY IN THE FIELD, THE CONTRACTOR SHALL NOTIFY THE ENGINEER PRIOR TO PROCEEDING WITH THE WORK IN THE AREA IN QUESTION.



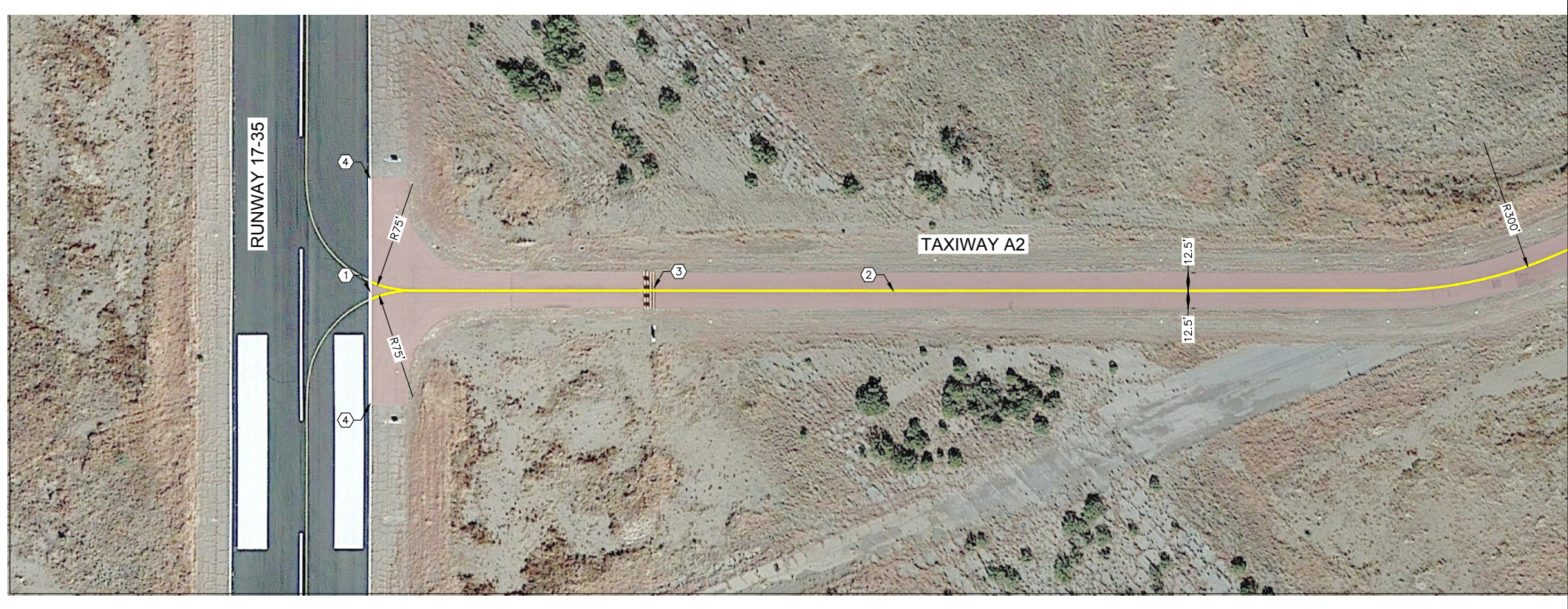
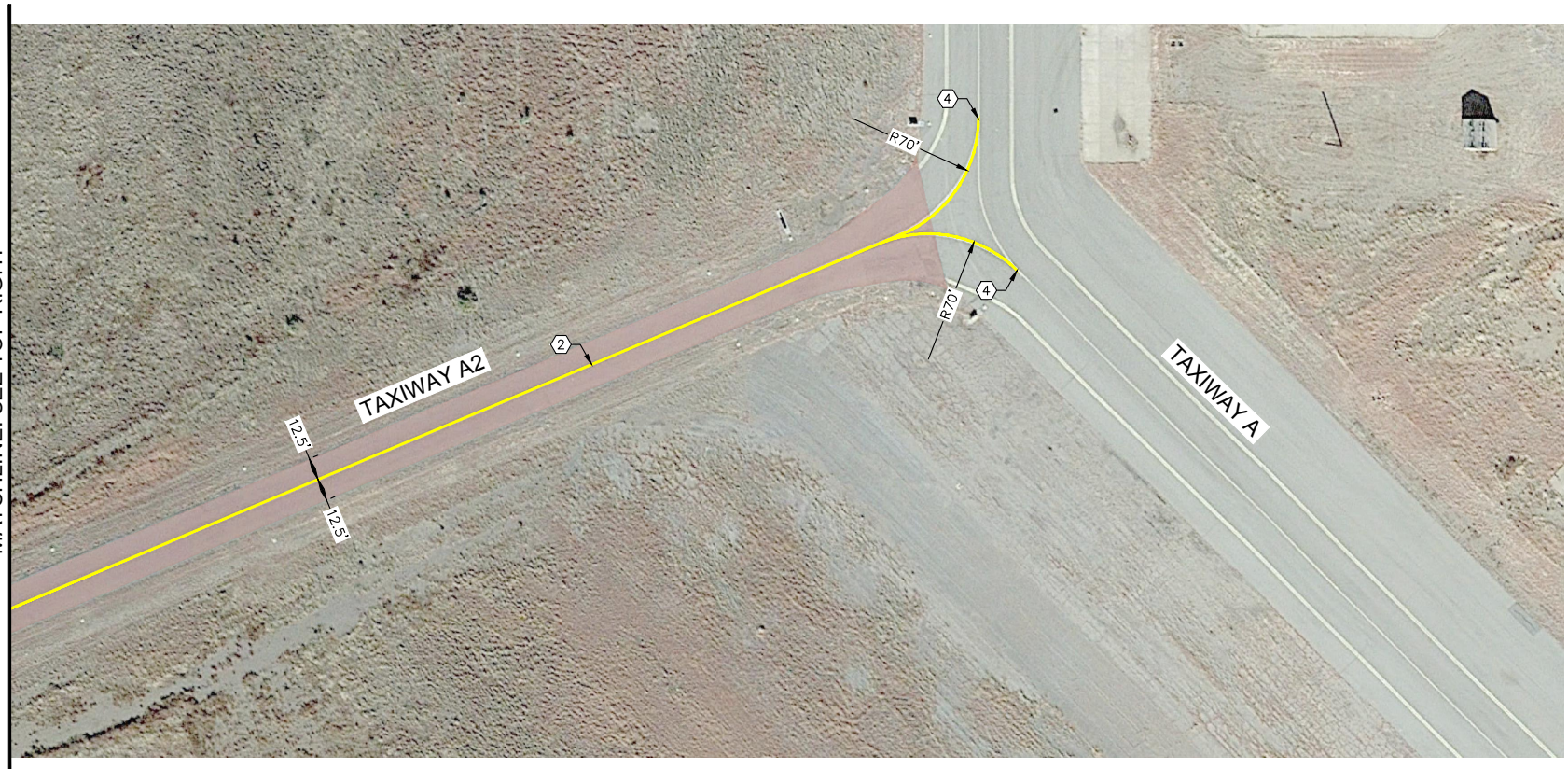
PLANS TO BE PRINTED IN COLOR

PRINTING OR COPYING PLANS IN BLACK & WHITE (GRayscale) MAY CAUSE DESIGN NOTES, DIMENSIONS, CALLOUTS, ETC. TO BECOME UNREADABLE. OFFICIAL PLAN SETS TO BE USED FOR CONSTRUCTION AND RECORD KEEPING ARE TO BE PRINTED IN COLOR.

K:\SWK_Aviation\191842000 - ADOT APMS\2022B (additive projects)\Bisbee-Douglas International\Design\CADD\Bisbee Douglas-PL.dwg Apr 11, 2022 Sandra Quiroz Ramirez
KREFES - CLIENT: THE ARIZONA DEPARTMENT OF TRANSPORTATION
THIS DOCUMENT, TOGETHER WITH THE CONCEPTS AND DESIGN PRESENTED HEREIN, AS AN INSTRUMENT OF SERVICE, IS INTENDED ONLY FOR THE SPECIFIC PURPOSE AND CLIENT FOR WHICH IT WAS PREPARED. REUSE OF ANY PART OF THIS DOCUMENT WITHOUT WRITTEN AUTHORIZATION AND ADAPTATION BY KIMLEY-HORN AND ASSOCIATES, INC. SHALL BE WITHOUT LIABILITY TO KIMLEY-HORN AND ASSOCIATES, INC.

 <p>Kimley-Horn © 2022 KIMLEY-HORN AND ASSOCIATES, INC. 7740 North 16th Street, Suite 300 Phoenix, Arizona 85020 (602) 944-5500</p>	 <p>Professional Engineer (Civil) STEVEN H. REEDER No. 5200 Arizona</p>
<p>SCALE (H):1"=400' SCALE (V):1"=40'</p> <p>DESIGNED BY: BLR DRAWN BY: HK CHECKED BY: SHR DATE: 03/16/22</p>	<p>ARIZONA DEPARTMENT OF TRANSPORTATION MULTIMODAL PLANNING DIVISION AERONAUTICS GROUP 1801 WEST JEFFERSON STREET PHOENIX, ARIZONA 85007</p> 
<p>BISBEE MUNICIPAL AIRPORT PROJECT LAYOUT PLAN SEAL COAT</p>	
<p>PROJECT NO. 191842000</p> <p>DRAWING NAME Bisbee Douglas-PL.dwg</p> <p>2 OF 6</p>	

K:\Fly\Aviation\191842000 - ADOT APMS\2022B (additive projects)\Bisbee-Douglas International\Design\CADD\Bisbee Douglas-PM.dwg Apr 11, 2022 Sandra Quiroz Ramirez
 XREFS: -G:\191842000 - ADOT APMS\2022B (additive projects)\Bisbee-Douglas International\Design\CADD\Bisbee Douglas-PM.dwg
 THIS DOCUMENT, TOGETHER WITH THE CONCEPTS AND DESIGN PRESENTED HEREON, AS AN INSTRUMENT OF SERVICE, IS INTENDED ONLY FOR THE SPECIFIC PURPOSE AND CLIENT FOR WHICH IT WAS PREPARED. REUSE
 OF AND IMPROPER RELIANCE ON THIS DOCUMENT WITHOUT WRITTEN AUTHORIZATION AND ADAPTATION BY KIMLEY-HORN AND ASSOCIATES, INC. SHALL BE WITHOUT LIABILITY TO KIMLEY-HORN AND ASSOCIATES, INC.



GENERAL NOTES

- PAVEMENT MARKINGS DETAILS SHALL CONFORM TO THE LATEST EDITION OF THE FEDERAL AVIATION ADMINISTRATION'S ADVISORY CIRCULAR AC-150/5340. IF A CONFLICT OCCURS BETWEEN THESE PLANS AND THE AC, THE AC SHALL TAKE PRECEDENCE.
- CONTRACTOR SHALL SURVEY THE EXISTING PAVEMENT MARKINGS PRIOR TO CONSTRUCTION. PROPOSED PAVEMENT MARKINGS SHALL TIE INTO THE EXISTING MARKINGS AT THE LIMITS OF THE PROJECT PER THE EXISTING SURVEYED MARKINGS. PROPOSED MARKINGS SHALL BE INSTALLED PER THE DIMENSIONS SHOWN ON THE PAVEMENT MARKING PLANS/DETAILS. ALL OTHER MARKINGS SHALL BE RE-INSTALLED PER THEIR EXISTING SURVEYED LOCATIONS.

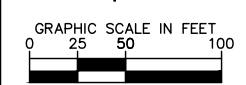
CONSTRUCTION NOTES:

- INSTALL EIGHTEEN INCH (18") SOLID WHITE RUNWAY EDGE PAVEMENT MARKINGS, PER DETAIL 1 SHEET 6
- INSTALL SIX INCH (6") WIDE SOLID YELLOW TAXIWAY CENTERLINE PAVEMENT MARKINGS, PER DETAIL 2 SHEET 6
- INSTALL SURFACE PAINTED HOLD BAR, PER DETAIL 3 SHEET 6
- MATCH EXISTING

NOTE: IF PROPOSED MARKINGS ON EXISTING PAVEMENT DO NOT CORRESPOND WITH EXISTING MARKINGS, EXISTING MARKINGS SHALL BE OBLITERATED (ITEM 620). LIMITS OF OBLITERATION TO BE COORDINATED WITH INSPECTOR PRIOR TO OBLITERATION.

LEGEND

LIMITS OF PAVEMENT REHABILITATION AND PAVEMENT MARKING OBLITERATION.



PLANS TO BE PRINTED IN COLOR

PRINTING OR COPYING PLANS IN BLACK & WHITE (GRAYSCALE) MAY CAUSE DESIGN NOTES, DIMENSIONS, CALLOUTS, ETC. TO BECOME UNREADABLE. OFFICIAL PLAN SETS TO BE USED FOR CONSTRUCTION AND RECORD KEEPING ARE TO BE PRINTED IN COLOR.

NO.	REVISION	DATE

Kimley»Horn
 © 2022 KIMLEY-HORN AND ASSOCIATES, INC.
 7740 North 16th Street, Suite 300
 Phoenix, Arizona 85020 (602) 944-5500



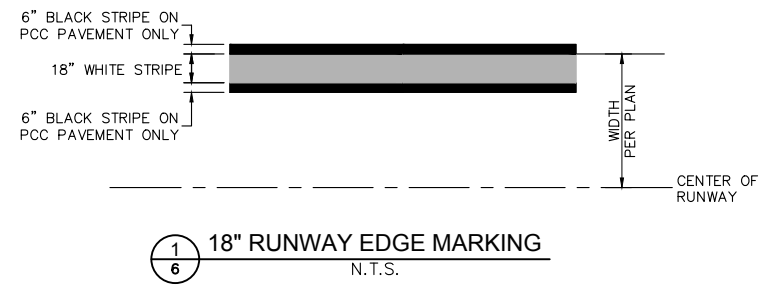
SCALE (H): 1"=50'
 SCALE (V): N/A
 DESIGNED BY: BLR
 DRAWN BY: HK
 CHECKED BY: SHR
 DATE: 03/16/22

ARIZONA DEPARTMENT OF TRANSPORTATION
 MULTIMODAL PLANNING DIVISION
 AERONAUTICS GROUP
 1801 WEST JEFFERSON STREET
 PHOENIX, ARIZONA 85007

BISBEE MUNICIPAL AIRPORT
 PAVEMENT MARKING PLAN
 SEAL COAT

PROJECT NO.
191842000
 DRAWING NAME
Bisbee Douglas-PM.dwg
 5 OF 6

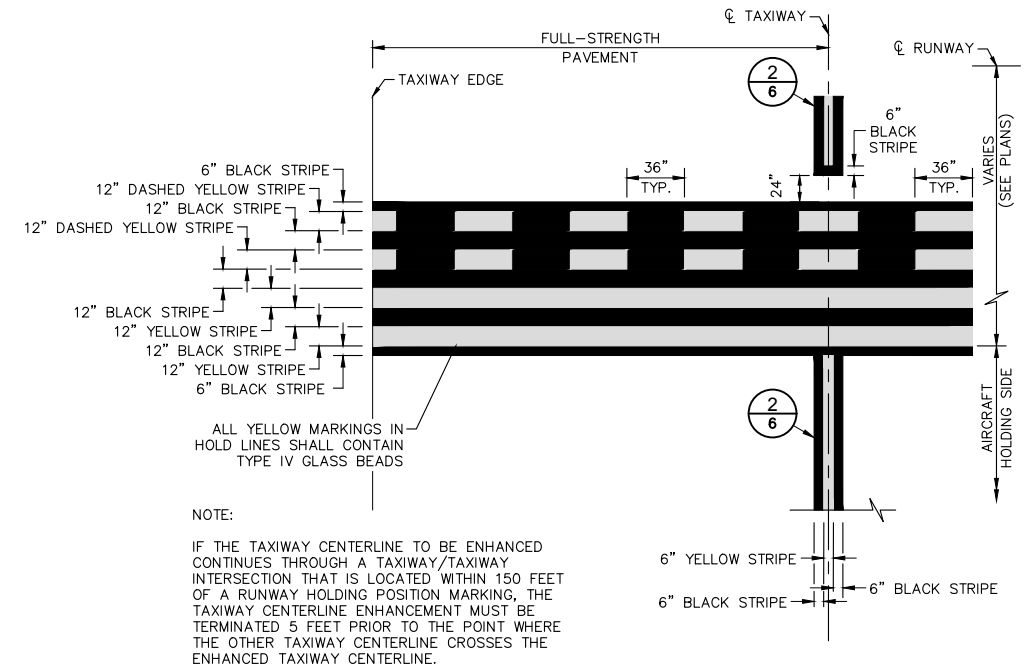
K:\Fly Aviation\191842000 - ADOT AFMS\2022B (godflike projects)\Bisbee-Douglas International\Design\CADD\Bisbee Douglas- DT.dwg Apr 11, 2022 Sandra Quiroz Ramirez
 K:\Fly Aviation\191842000 - ADOT AFMS\2022B (godflike projects)\Bisbee-Douglas International\Design\CADD\Bisbee Douglas- DT.dwg Apr 11, 2022 Sandra Quiroz Ramirez
 THIS DOCUMENT, TOGETHER WITH THE CONCEPTS AND DESIGNS PRESENTED HEREIN, IS INTENDED ONLY FOR THE SPECIFIC PURPOSE AND CLIENT FOR WHICH IT WAS PREPARED. REUSE
 OF AND IMPROPER RELIANCE ON THIS DOCUMENT WITHOUT WRITTEN AUTHORIZATION AND ADAPTATION BY KIMLEY-HORN AND ASSOCIATES, INC. SHALL BE WITHOUT LIABILITY TO KIMLEY-HORN AND ASSOCIATES, INC.



1
6 18" RUNWAY EDGE MARKING
N.T.S.



2
6 TAXIWAY CENTERLINE PAVEMENT MARKING
N.T.S.



3
6 SURFACE PAINTED HOLD BAR DETAIL
N.T.S.

NOTE:
 IF THE TAXIWAY CENTERLINE TO BE ENHANCED CONTINUES THROUGH A TAXIWAY/TAXIWAY INTERSECTION THAT IS LOCATED WITHIN 150 FEET OF A RUNWAY HOLDING POSITION MARKING, THE TAXIWAY CENTERLINE ENHANCEMENT MUST BE TERMINATED 5 FEET PRIOR TO THE POINT WHERE THE OTHER TAXIWAY CENTERLINE CROSSES THE ENHANCED TAXIWAY CENTERLINE.



PLANS TO BE PRINTED IN COLOR

PRINTING OR COPYING PLANS IN BLACK & WHITE (GRAYSCALE) MAY CAUSE DESIGN NOTES, DIMENSIONS, CALLOUTS, ETC. TO BECOME UNREADABLE. OFFICIAL PLAN SETS TO BE USED FOR CONSTRUCTION AND RECORD KEEPING ARE TO BE PRINTED IN COLOR.

<p>© 2022 KIMLEY-HORN AND ASSOCIATES, INC. 7740 North 16th Street, Suite 300 Phoenix, Arizona 85020 (602) 944-5500</p>	
SCALE (H): N/A SCALE (V): N/A	DESIGNED BY: BLR DRAWN BY: HK CHECKED BY: SHR DATE: 03/16/22
<p>ARIZONA DEPARTMENT OF TRANSPORTATION MULTIMODAL PLANNING DIVISION AERONAUTICS GROUP 1801 WEST JEFFERSON STREET PHOENIX, ARIZONA 85007</p>	
BISBEE MUNICIPAL AIRPORT PAVEMENT MARKING DETAILS SEAL COAT	
PROJECT NO. 191842000	DRAWING NAME Bisbee Douglas- DT.dwg
6 OF 6	REVISION NO. DATE