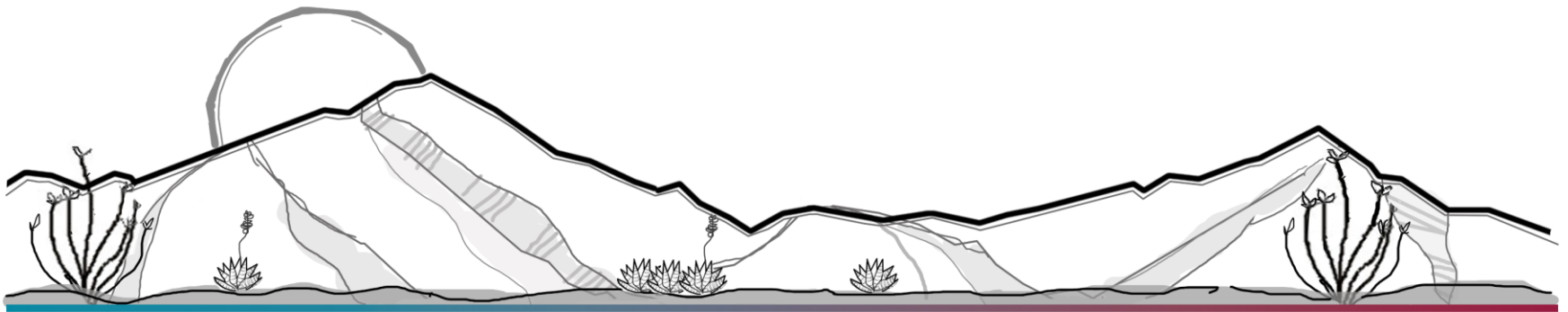


RZ22-13 (Casa Adobe)

Rezone from SR-8 to RU-4

Board of Supervisors
August 30, 2022

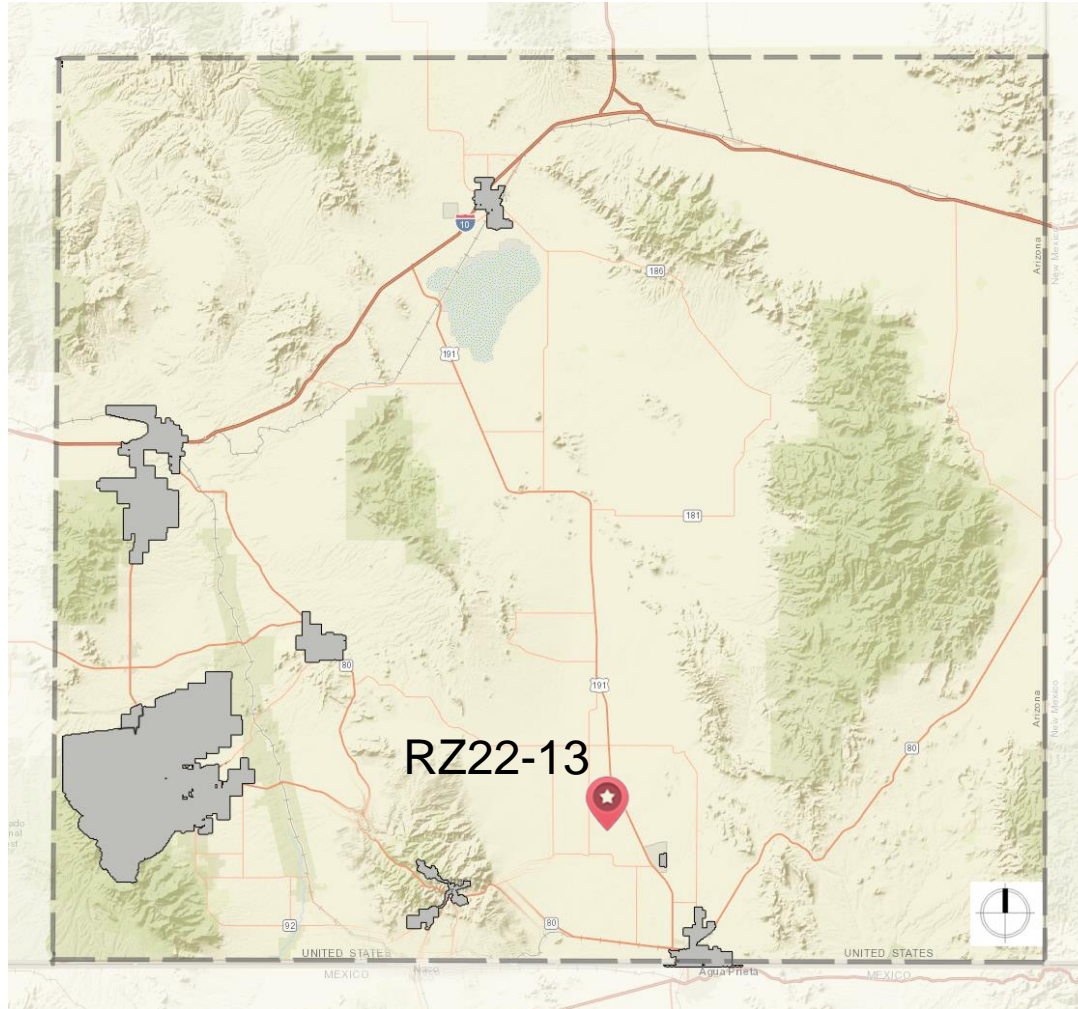


RZ22-13 (Casa Adobe) SR-8 to RU-4

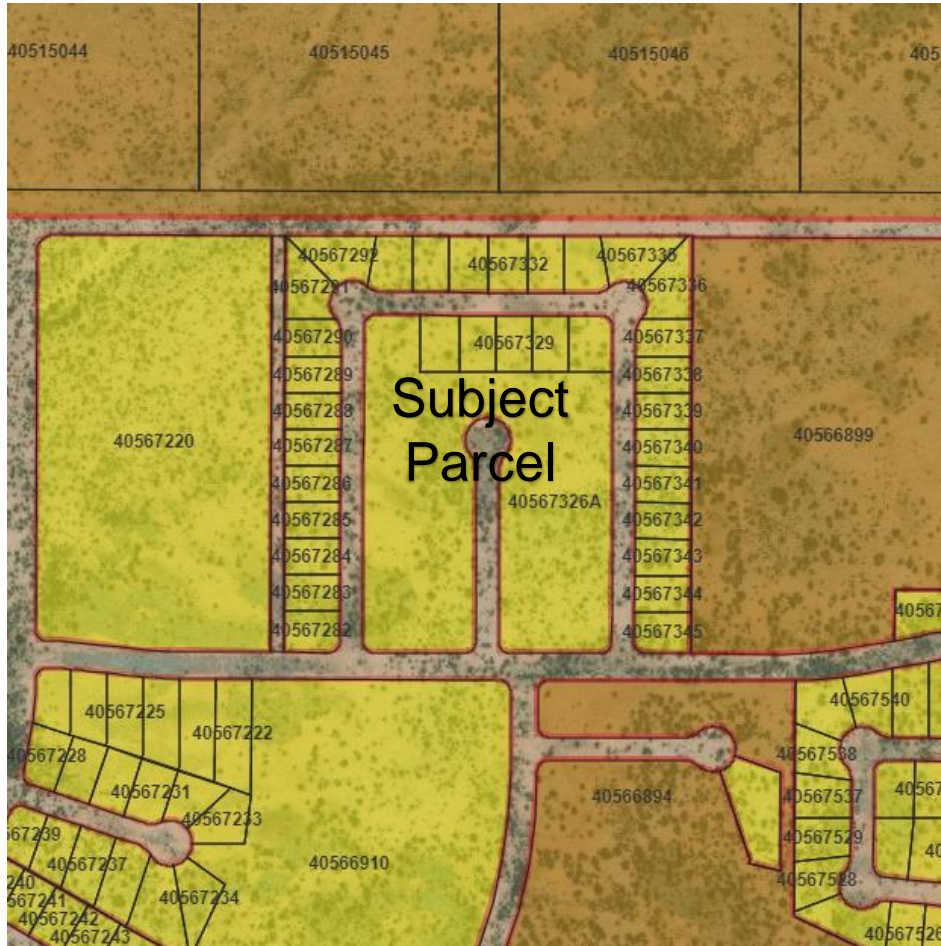
- County initiated request to rezone a 7.48-acre parcel 405-67-326A from SR-8 (Single-Family Residential; one dwelling per 8,000 square feet) to RU-4 (Single-Family Residential; one dwelling per four acres)



RZ22-13 (Casa Adobe) SR-8 to RU-4



RZ22-13 (Casa Adobe) SR-8 to RU-4



RZ22-13 (Casa Adobe) SR-8 to RU-4

Factors in Favor of Approval

- 1. The request complies with ten of the applicable rezoning factors used by staff to analyze this request;*
- 2. The request would be in keeping with the character of the existing development in the area.*

Factors Against Approval

- 1. None*



RZ22-13 (Casa Adobe) SR-8 to RU-4

Based on the factors in favor of approval, staff recommends **approval of RZ22-13**, rezoning parcel 405-67-326A from SR-8 to RU-4.

