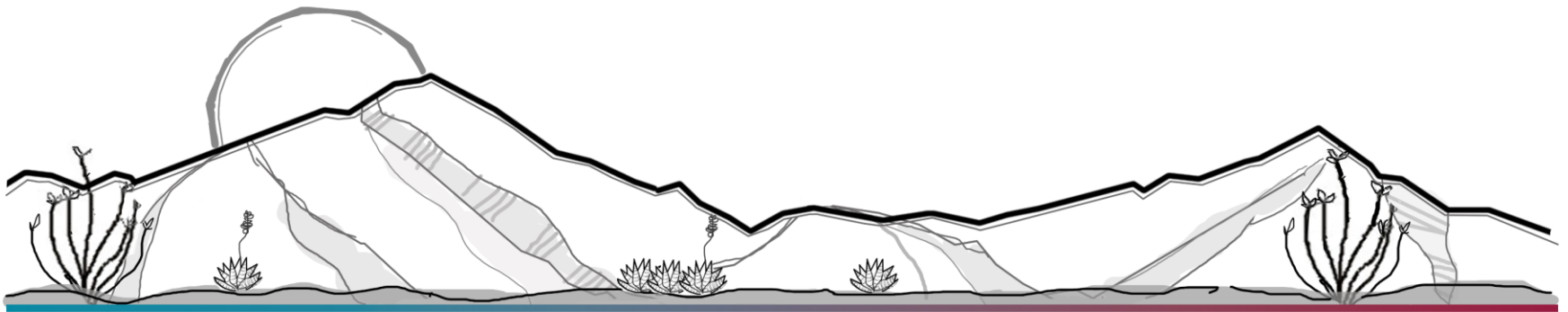


RZ22-16 (Dosen Reversion)

Revert Zoning from SR-8 to R-36

Board of Supervisors
September 27, 2022



RZ22-16 (Dosen Reversion) SR-8 to R-36

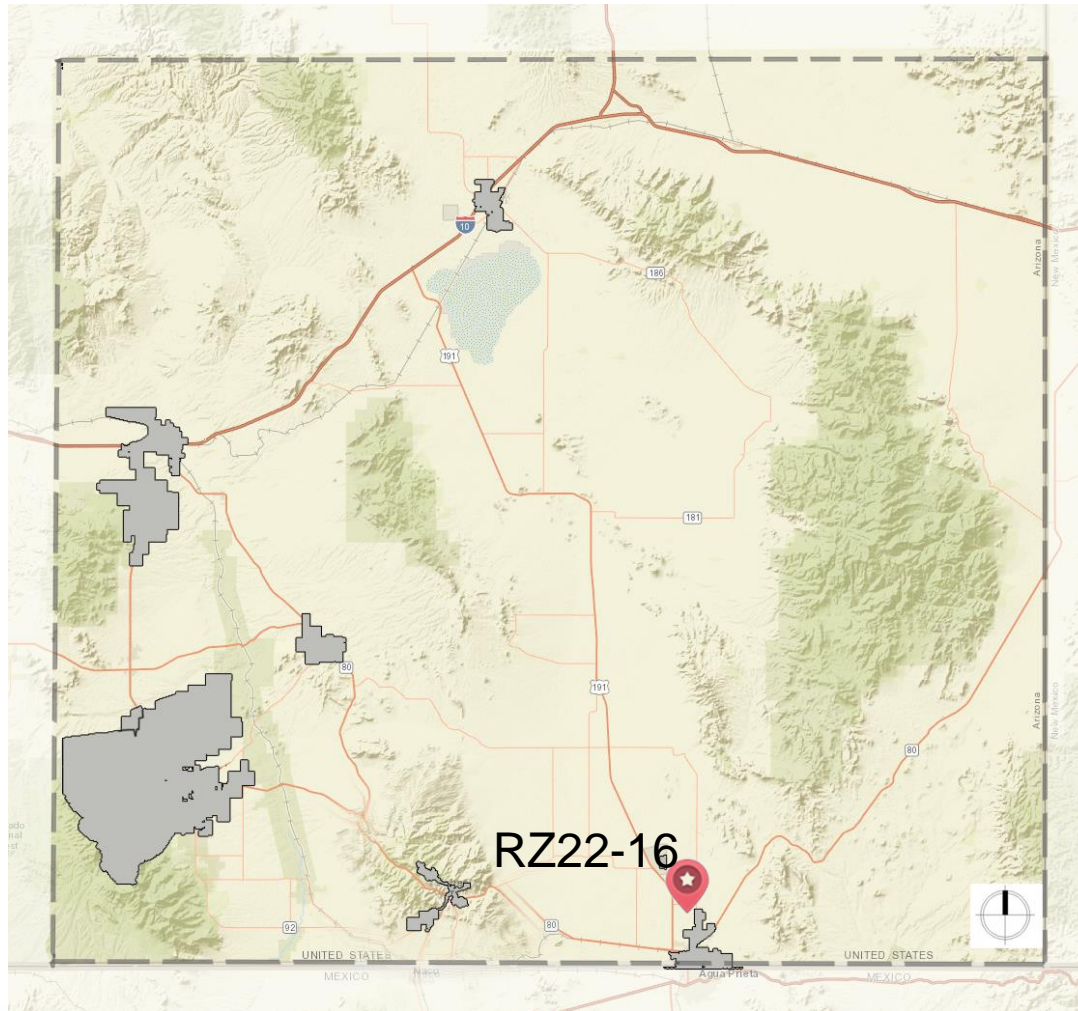
County initiated request to rezone a 257 acres, parcels 408-03-002 and 408-03-003A from SR-8 (Single-Family Residential; one dwelling per 8,000 square feet) to R-36 (Residential; one dwelling per 36,000 square feet)

Reversion of zoning approved by the Board of Supervisors in 2007, Zoning Docket R-07-18 (Saddleview)

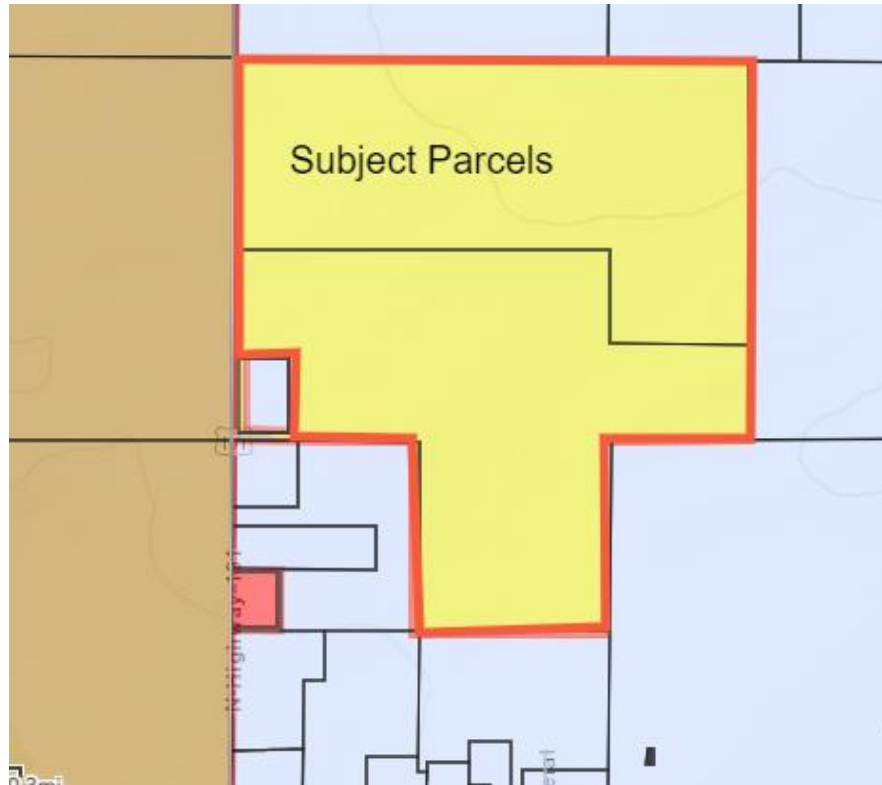
Condition of the rezoning in 2007 required submission of a subdivision plat within 18-months of approval.



RZ22-16 (Dosen Reversion) SR-8 to R-36



RZ22-16 (Dosen Reversion) SR-8 to R-36



RZ22-16 (Dosen Reversion) SR-8 to R-36

Recommendation:

Staff recommends **approval** of RZ22-16, reverting the zoning from SR-8 to R-36.

