

ZONING ORDINANCE 22-___

**AMENDING CERTAIN ZONING DISTRICT BOUNDARIES FROM SR-8
TO R-36, PURSUANT TO THE APPLICATION OF
COCHISE COUNTY**

WHEREAS, Arizona Revised Statutes (“A.R.S.”) § 11-814 allows property owners, or their authorized agent, to request amendments to the Zoning District boundaries, through the Board of Supervisors in a public hearing; and

WHEREAS, the Cochise County Board of Supervisors (“Board of Supervisors”) recognizes that zoning amendments can affect land use patterns and, therefore, warrant careful consideration of local and regional impacts at a public hearing; and

WHEREAS, Tax Parcel 408-03-002 and 408-03-003A are zoned as SR-8 and were never developed in accordance with the condition placed on the approval of rezoning in 2007 requiring the approval of a subdivision plat; and

WHEREAS, Cochise County (the “Applicant”) wishes to revert the Zoning to R-36; and

WHEREAS, the requested zoning district represents a reduction in density in accordance with the Comprehensive Plan; and

WHEREAS, the requested zoning district is harmonious with the surrounding zoning districts; and

WHEREAS, the Board of Supervisors promotes effective, early, and continuous public participation by citizens; and

WHEREAS, the Board of Supervisors held a duly noticed public hearing on the amendments to the Zoning District boundaries proposed by the Applicant; and

WHEREAS, the Board of Supervisors approved the request for a change in the Zoning District boundaries.

NOW, THEREFORE, BE IT RESOLVED that the Cochise County Zoning District Boundaries shall be amended as follows:

The zoning classification for Tax Parcel 408-03-002 and 408-03-003A as shown on the map attached to this Resolution as Exhibit A, is changed from SR-8 to R-36.

PASSED AND ADOPTED by the Board of Supervisors of Cochise County, Arizona, this 27th day of September 2022.

Ann English, Chair
Cochise County Board of Supervisors

ATTEST:

Tim Mattix
Clerk of the Board

APPROVED AS TO FORM:

Paul Correa

Paul Correa
Civil Deputy County Attorney

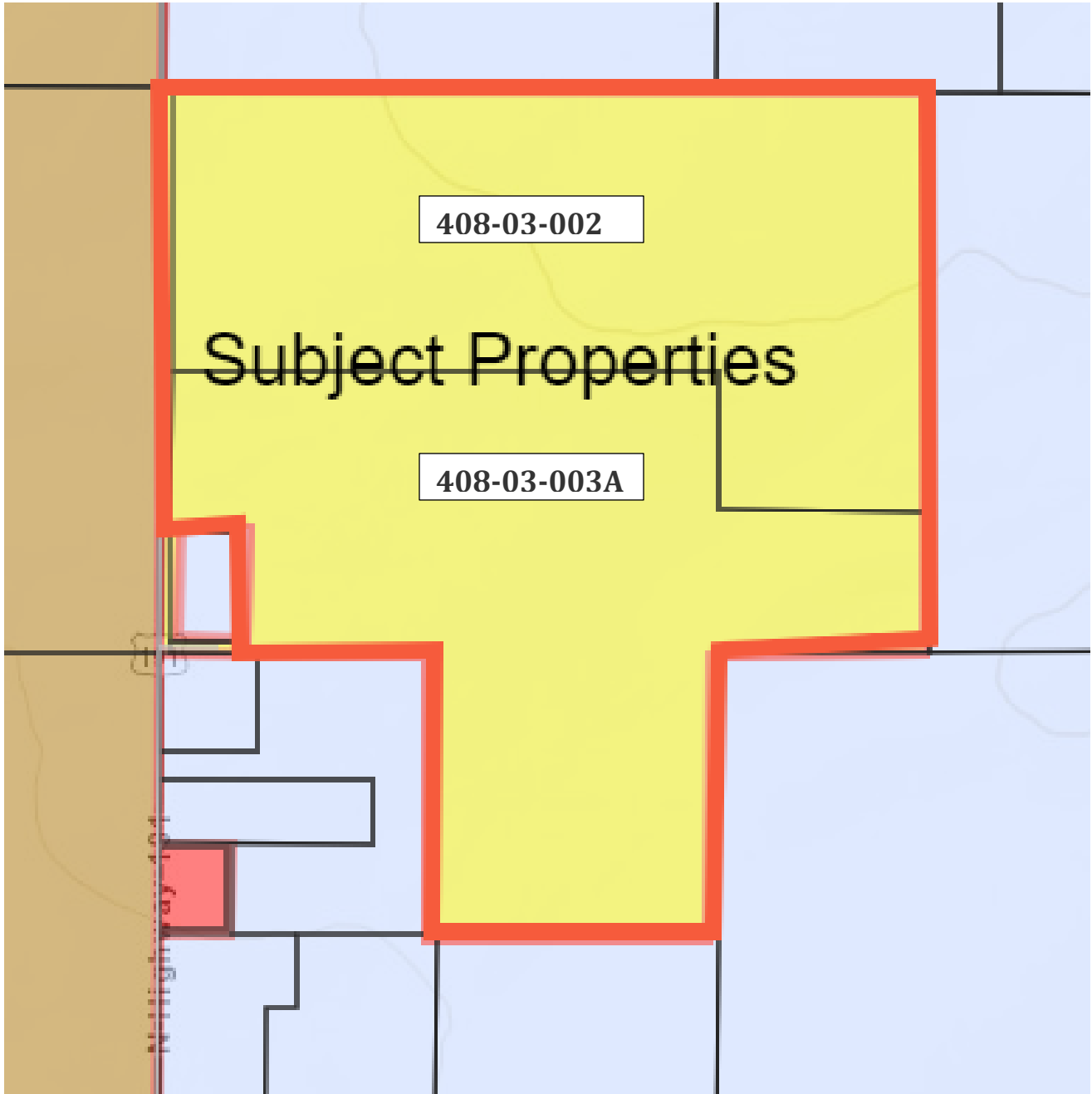


EXHIBIT A

