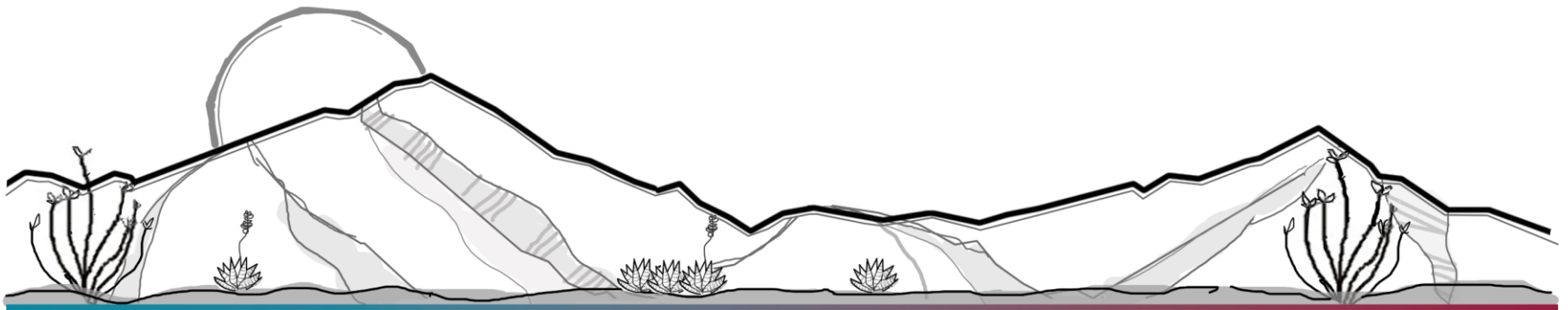


RZ22-18 (Babocomari)

Revert Zoning from R-36 and RU-2 to RU-4

Board of Supervisors
October 25, 2022



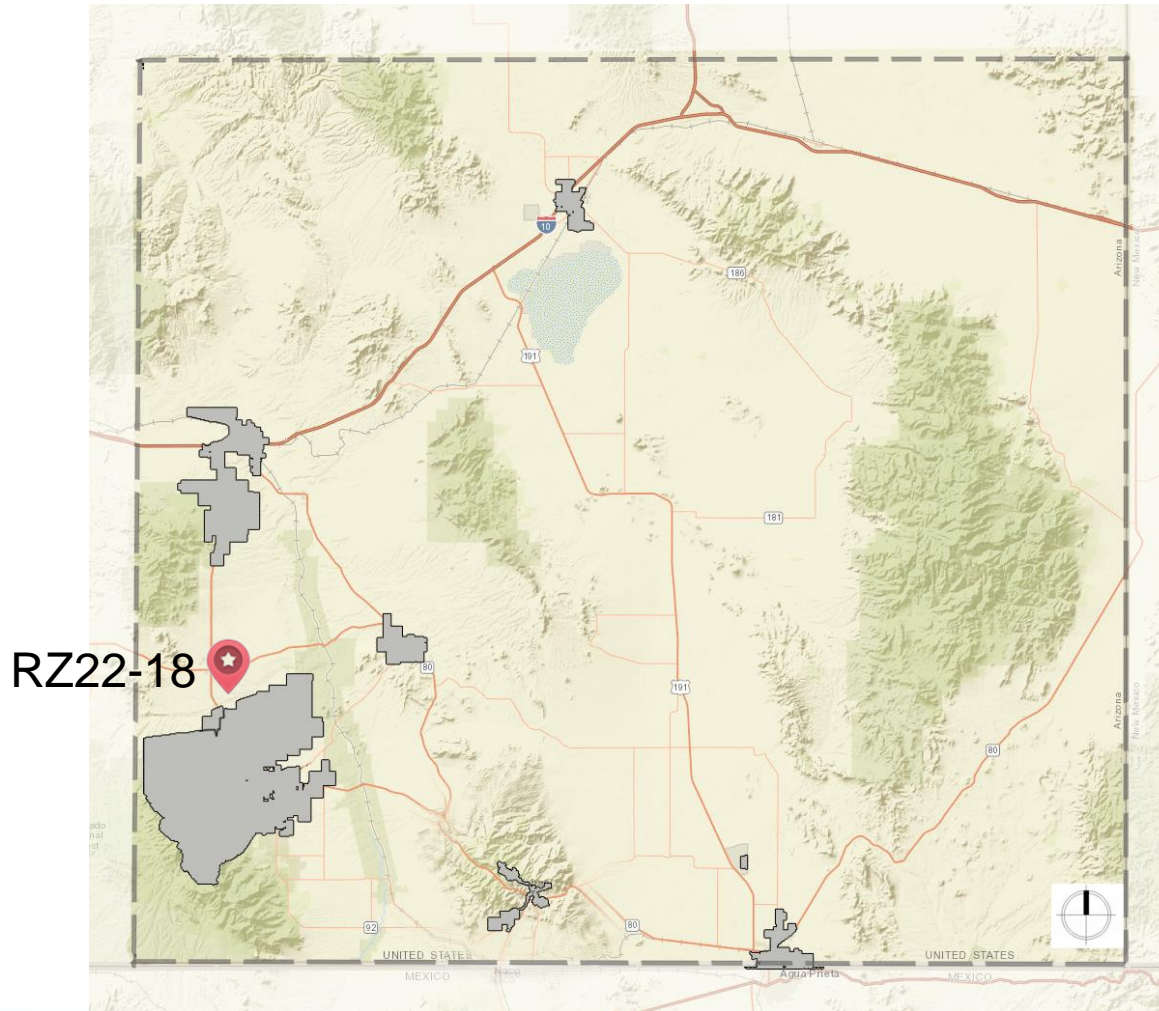
RZ22-18 (Babocomari) Rezoning to RU-4

County initiated request to rezone 21 parcels of approximately 409 acres, from R-36 (Residential, minimum lot size 36,000 square feet and RU-2 (Rural; one dwelling per 2 acres) to RU-4 (Rural; one dwelling per 4 acres)

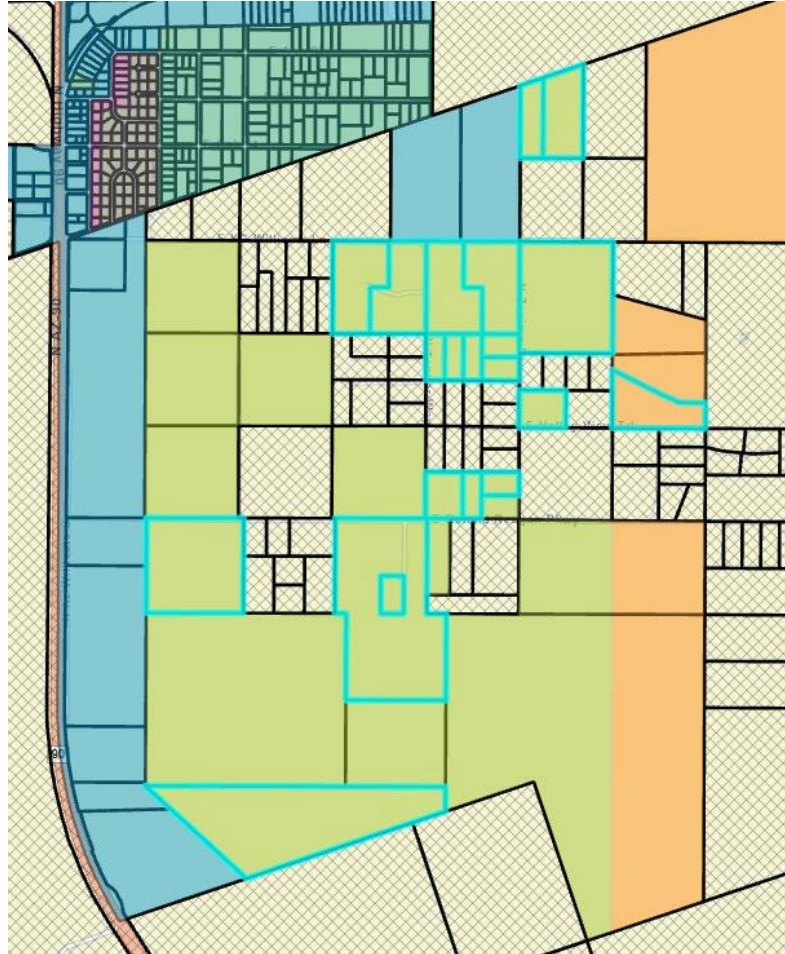
Removes the condition placed on the current zoning requiring a subdivision plat.



RZ22-18 (Babocomari) Rezoning to RU-4



RZ22-18 (Babocomari) Rezoning to RU-4



RZ22-18 (Babocomari) Rezoning to RU-4

Recommendation:

The Planning and Zoning Commission recommended **approval** to the Board of Supervisors at their October 12, 2022, meeting.

Based on the factors in favor of approval, staff recommends **approval** to rezoning the subject parcels as listed on page one to RU-4.

