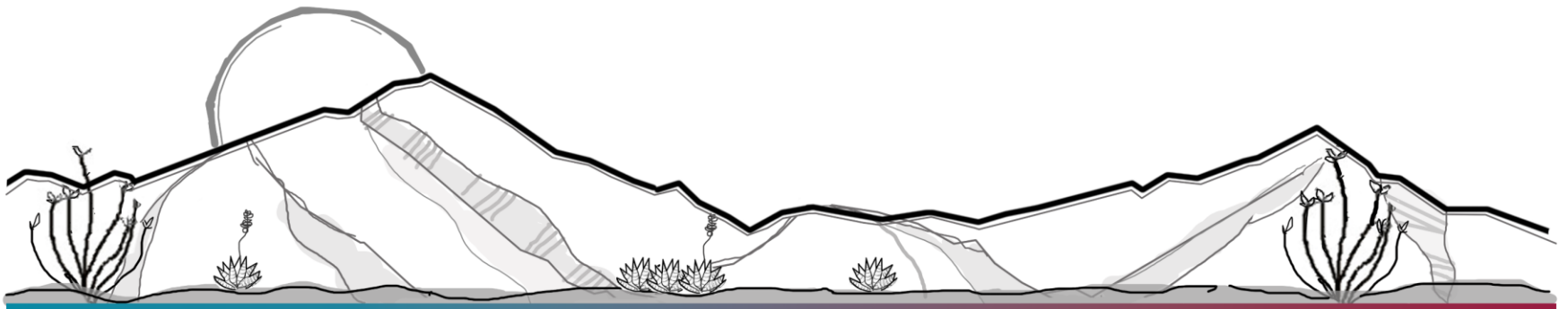


RZ22-19 (Stevens)

Rezone from SR-12 to GB

Board of Supervisors
November 29, 2022



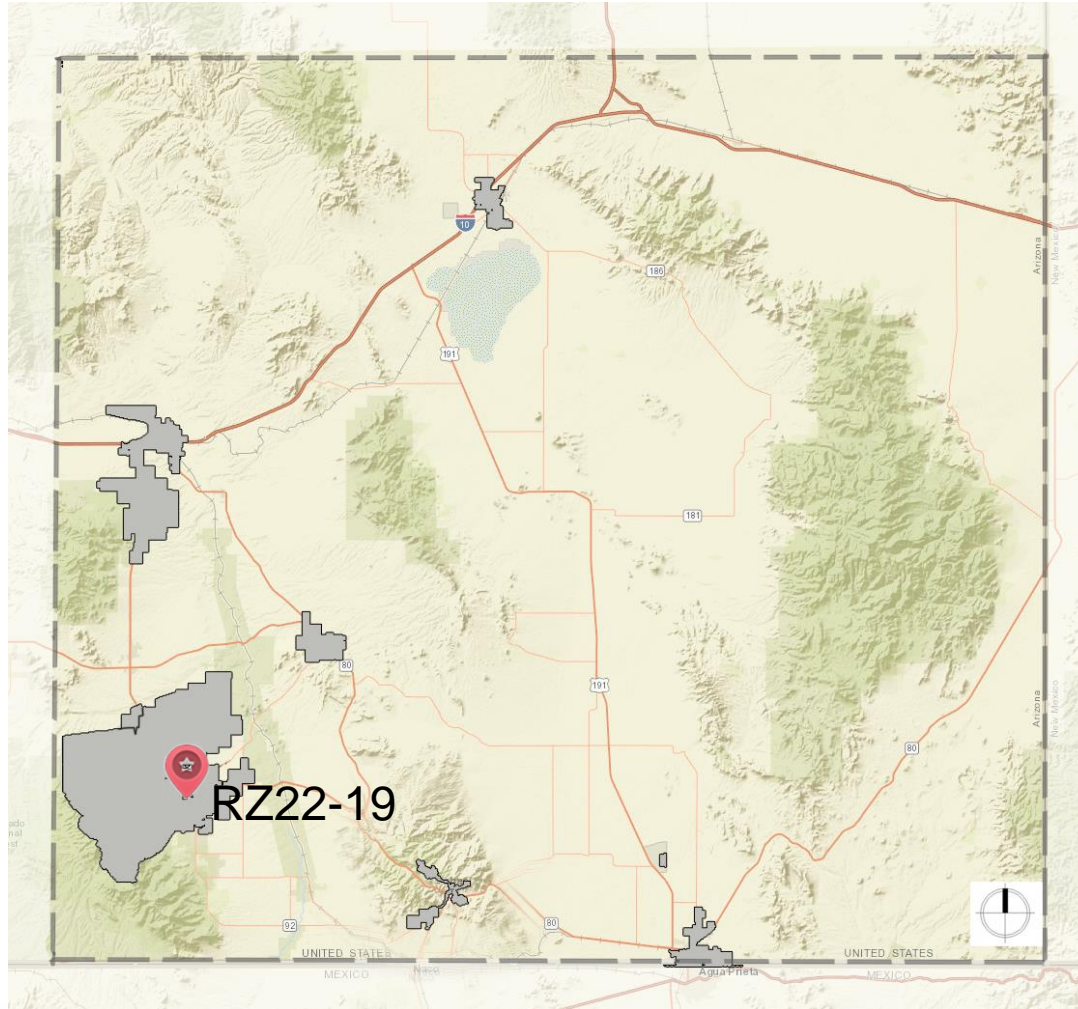
RZ22-19 (Stevens) SR-12 to GB

- A request to rezone the southern portion of parcel 105-05-303 from SR-12 (Single-Family Residential; one dwelling per 12,000 square feet) to GB (General Business)
- Southern portion is undevelopable under existing SR-12 zoning.



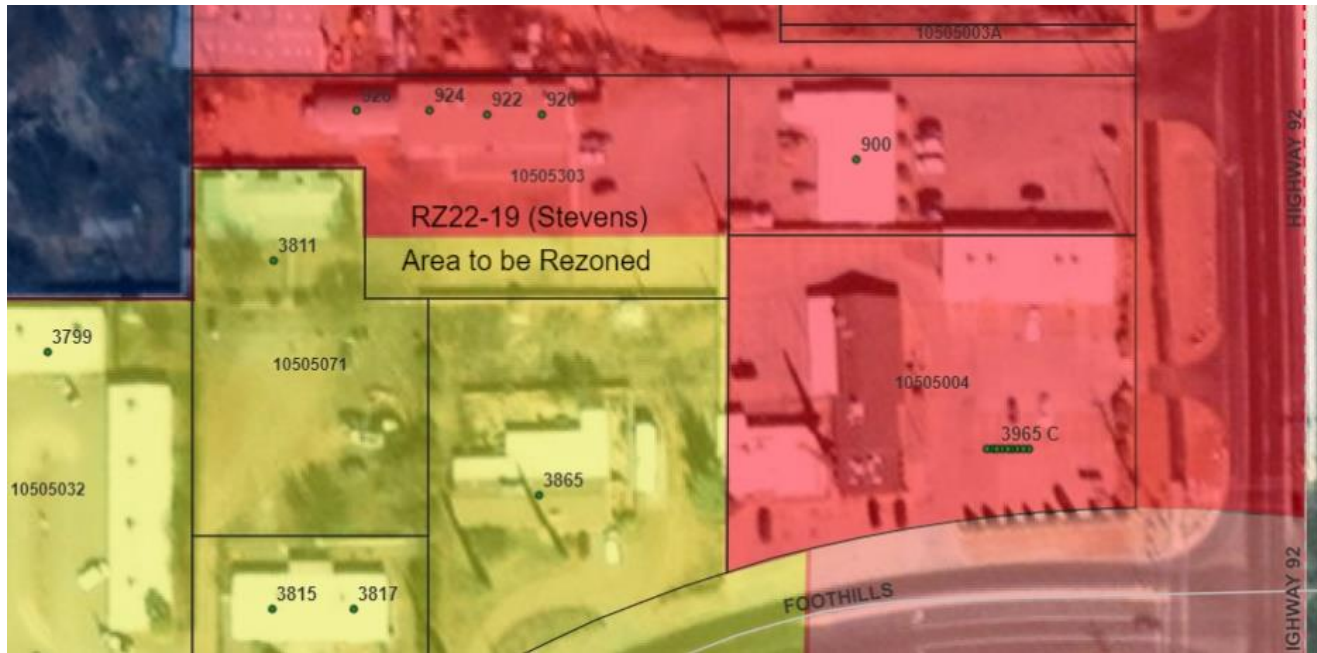
DEVELOPMENT SERVICES

RZ22-19 (Stevens) SR-12 to GB



DEVELOPMENT SERVICES

RZ22-19 (Stevens) SR-12 to GB



RZ22-19 (Stevens) SR-12 to GB

Factors in Favor of Approval

- 1. The request complies with thirteen of the applicable rezoning factors used by staff to analyze this request;*
- 2. The request would be in keeping with the character of the existing development in the area.*

Factors Against Approval

- 1. None*



DEVELOPMENT SERVICES



RZ22-19 (Stevens) SR-12 to GB

Recommendation:

The Planning & Zoning Commission, at their regular meeting on November 9, 2022, voted unanimously to recommend **approval** of RZ21-19.

*Staff recommends **approval** of the rezoning request RZ22-19*

