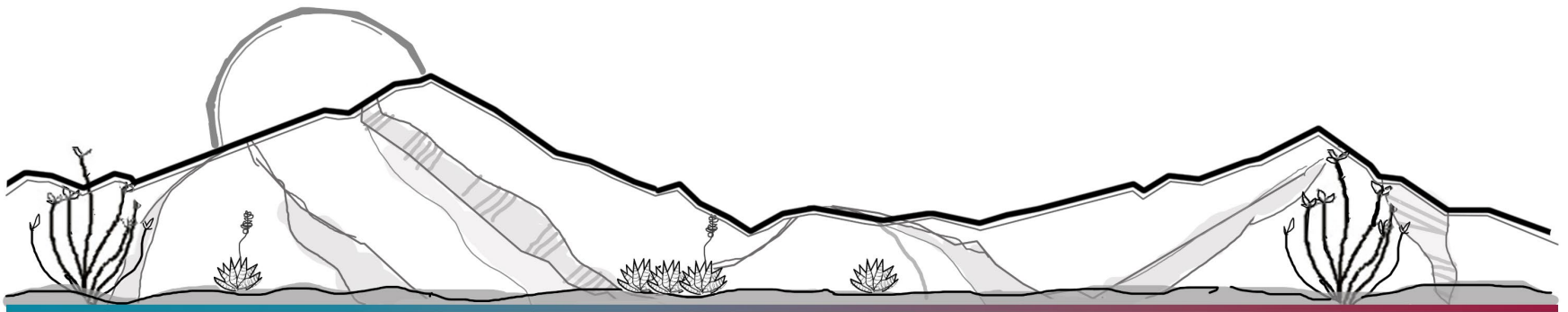


RZ22-18 (Babocomari)

Revert Zoning from R-36 and RU-2 to RU-4

Planning and Zoning Commission
October 12, 2022



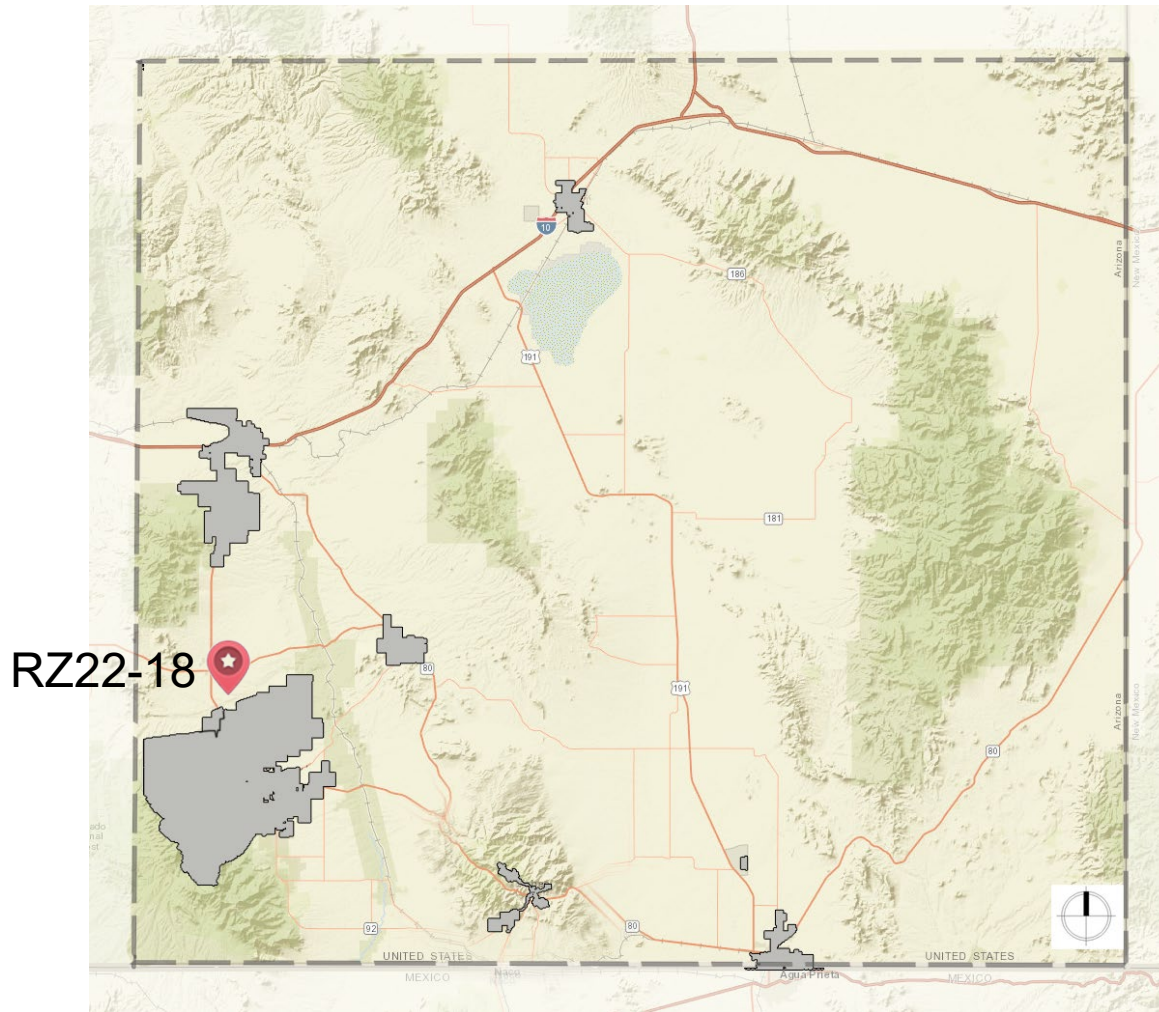
RZ22-18 (Babocomari) Rezoning to RU-4

County initiated request to rezone 21 parcels of approximately 409 acres, from R-36 (Residential, minimum lot size 36,000 square feet and RU-2 (Rural; one dwelling per 2 acres) to RU-4 (Rural; one dwelling per 4 acres)

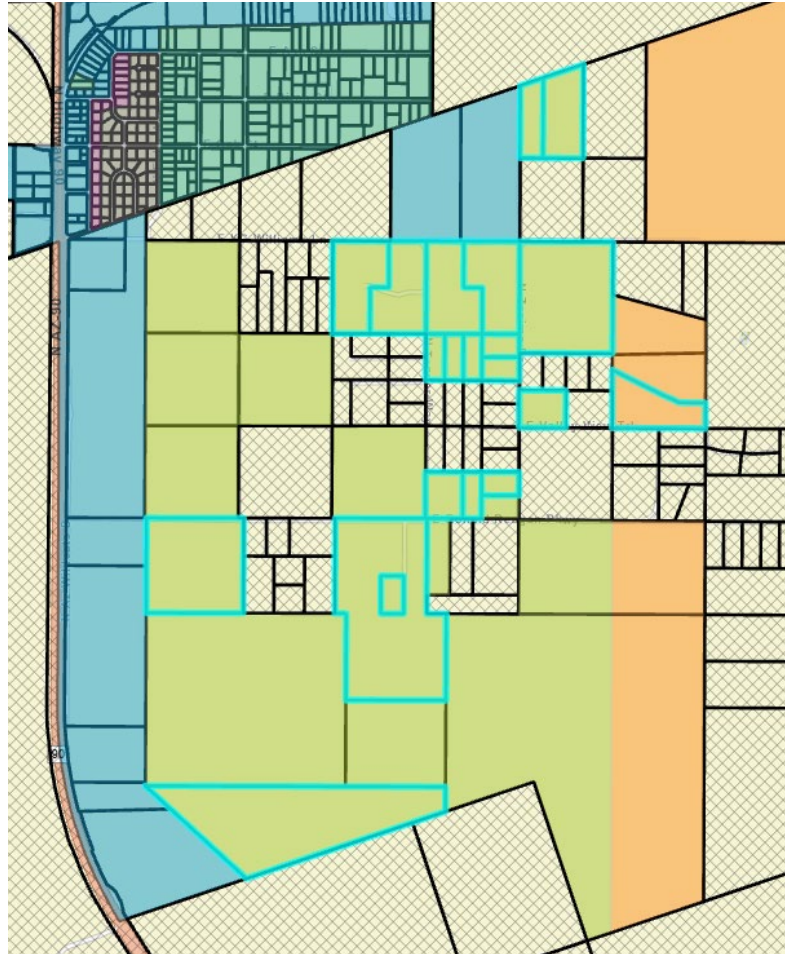
Removes the condition placed on the current zoning requiring a subdivision plat.



RZ22-18 (Babocomari) Rezoning to RU-4



RZ22-18 (Babocomari) Rezoning to RU-4



RZ22-18 (Babocomari) Rezoning to RU-4

Recommendation:

Based on the factors in favor of approval, staff recommends forwarding the rezoning request to RU-4 to the Board of Supervisors with a recommendation of **approval**.

Sample Motion:

Mr. Chairman, I move to recommend approval to the Board of Supervisors, Rezoning RZ22-18; the factors in Favor of Approval constitute the Finds of Fact.

