

COCHISE COUNTY JUSTICE CENTER
MASTER PLAN

PROGRESS DRAFT 10.09.2021



VISION STATEMENT

The Cochise County Justice Center is an innovative facility that re-imagines the approach to justice and civic design. Our goal is to create a place that allows growth and transparency between the public and law enforcement - creating a "front porch" for the community.

The new facility will introduce local materials into a modern and welcoming design. Rather than providing a harsh and firm environment like most justice buildings, the goal here is to introduce a soft and approachable place for both staff and the public. By featuring local materials such as stone, copper, and brick, the new CCJC will evoke a sense of calm and tranquility while blending in with the surrounding landscape.

Located outside of historic, Downtown Bisbee, we recognized a desire to design a facility with a strong emphasis on community connection and social interaction. Through our physical environment we demonstrate the valued connection with our communities, our commitment to sustainable excellence, and our core values of access, equity, and wellness. Similar to downtown Bisbee, our conceptual design will feature "pockets" of space both indoors and outdoors which will encourage open conversation, social engagement, and provide opportunities to embrace local art and community design.

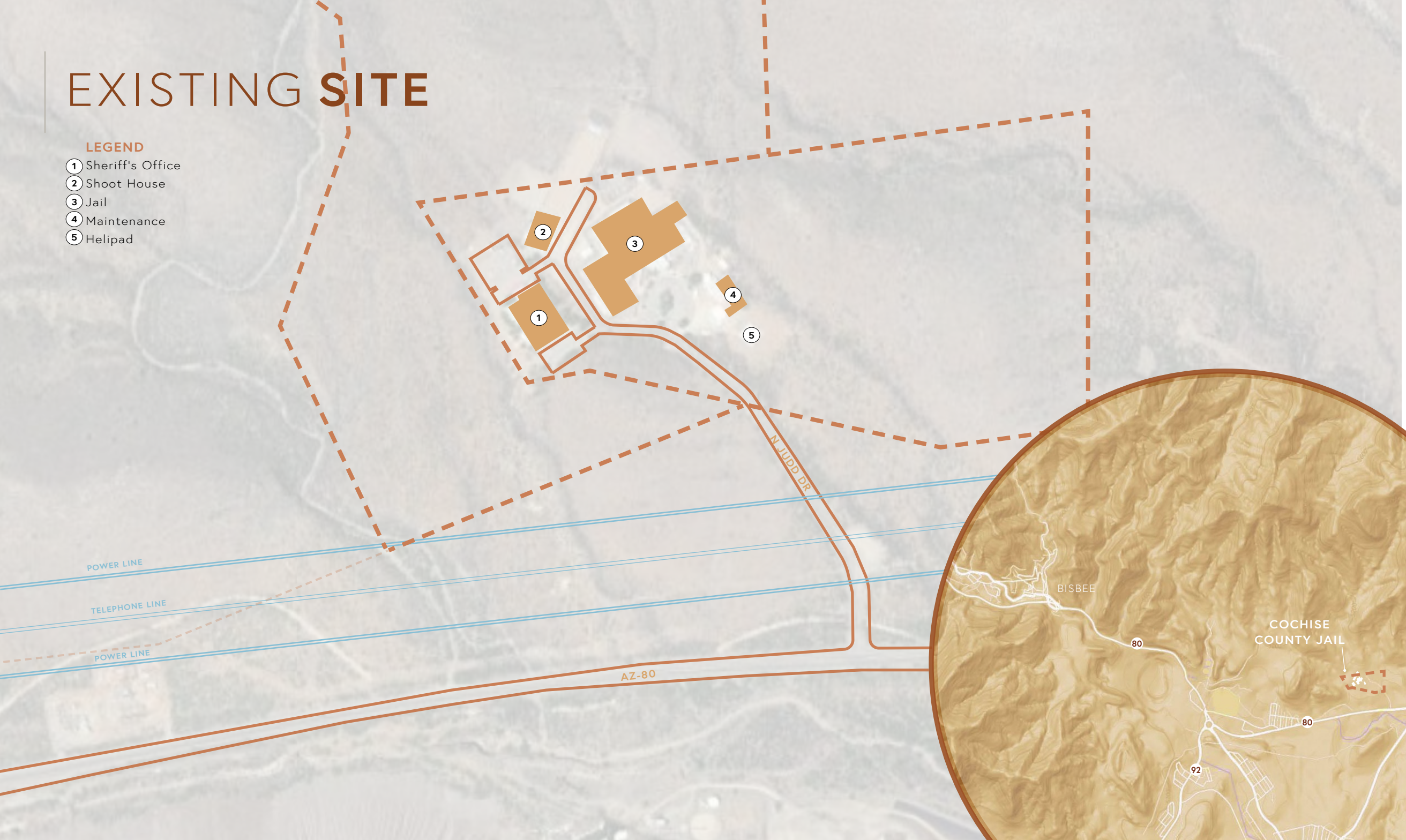
As stewards of the public built environment, DLR Group's Justice + Civic Studio elevates behavioral, environmental and social betterment, resulting in healing, equity and transformation for the individual and community.



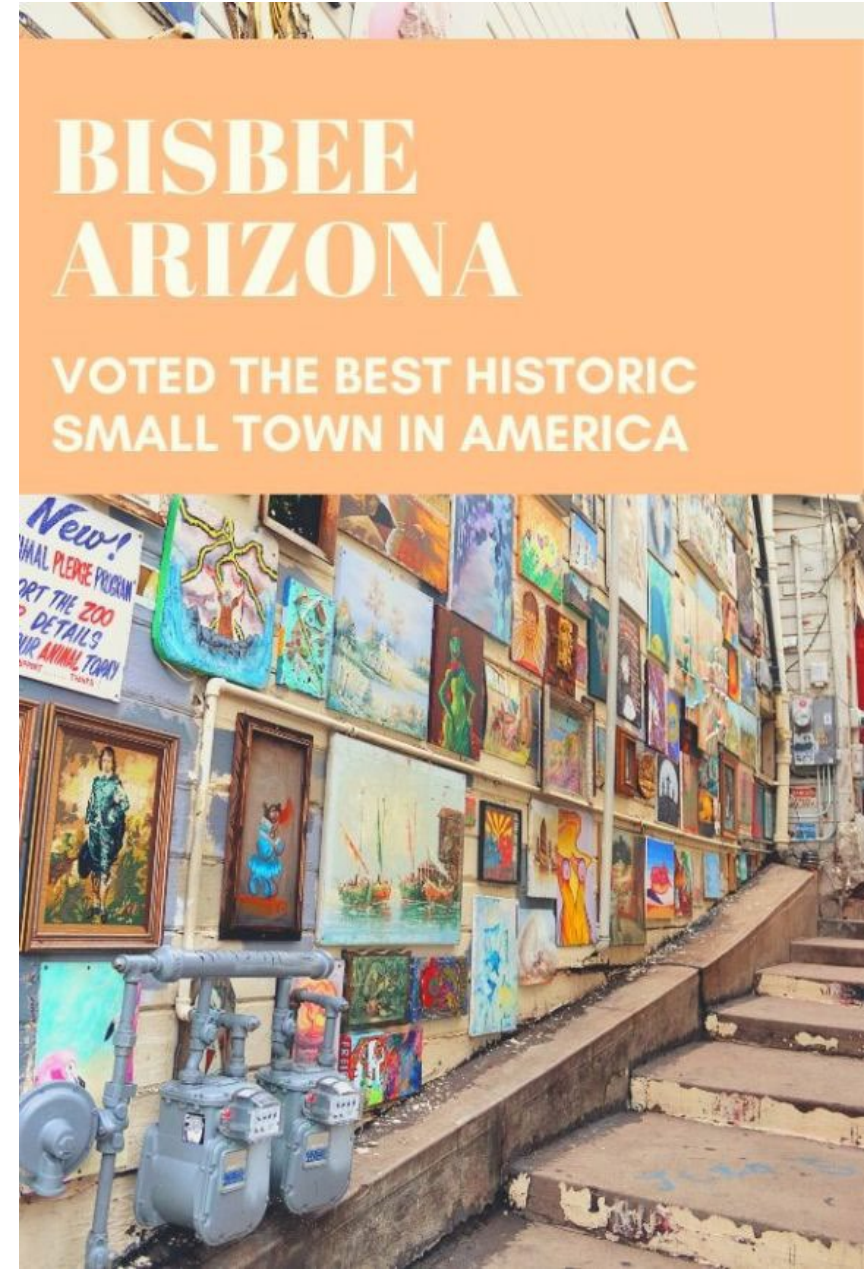
EXISTING SITE

LEGEND

- ① Sheriff's Office
- ② Shoot House
- ③ Jail
- ④ Maintenance
- ⑤ Helipad



CONTEXT **BISBEE**



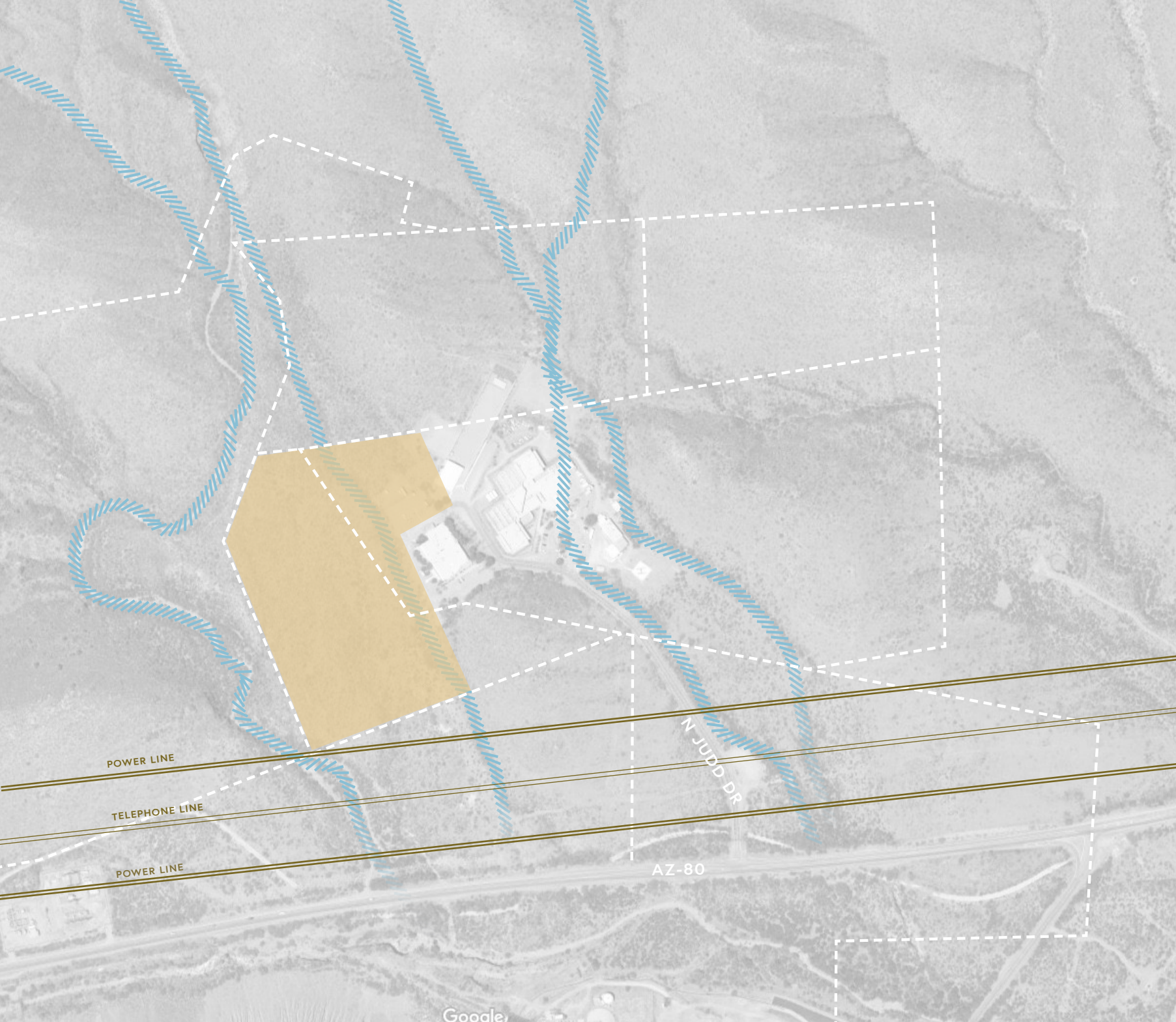
SITE STUDY A

PROS

- 1) Largest Site Area / Relatively Flat
- 2) Multi-Story reduces construction area resulting in less site work and reduced finished floor transitions
- 3) Site has room for future growth and expansion, including jail sheriff and court
- 4) Successful Public / Private flow
- 5) Direct access for inmate transport to Court
- 6) Two Story Court allows for better separation of inmates and judicial staff during Court transport
- 7) Site has space for private staff outdoor area

CONS

- 1) Two Story Housing requires Stairs and Elevator



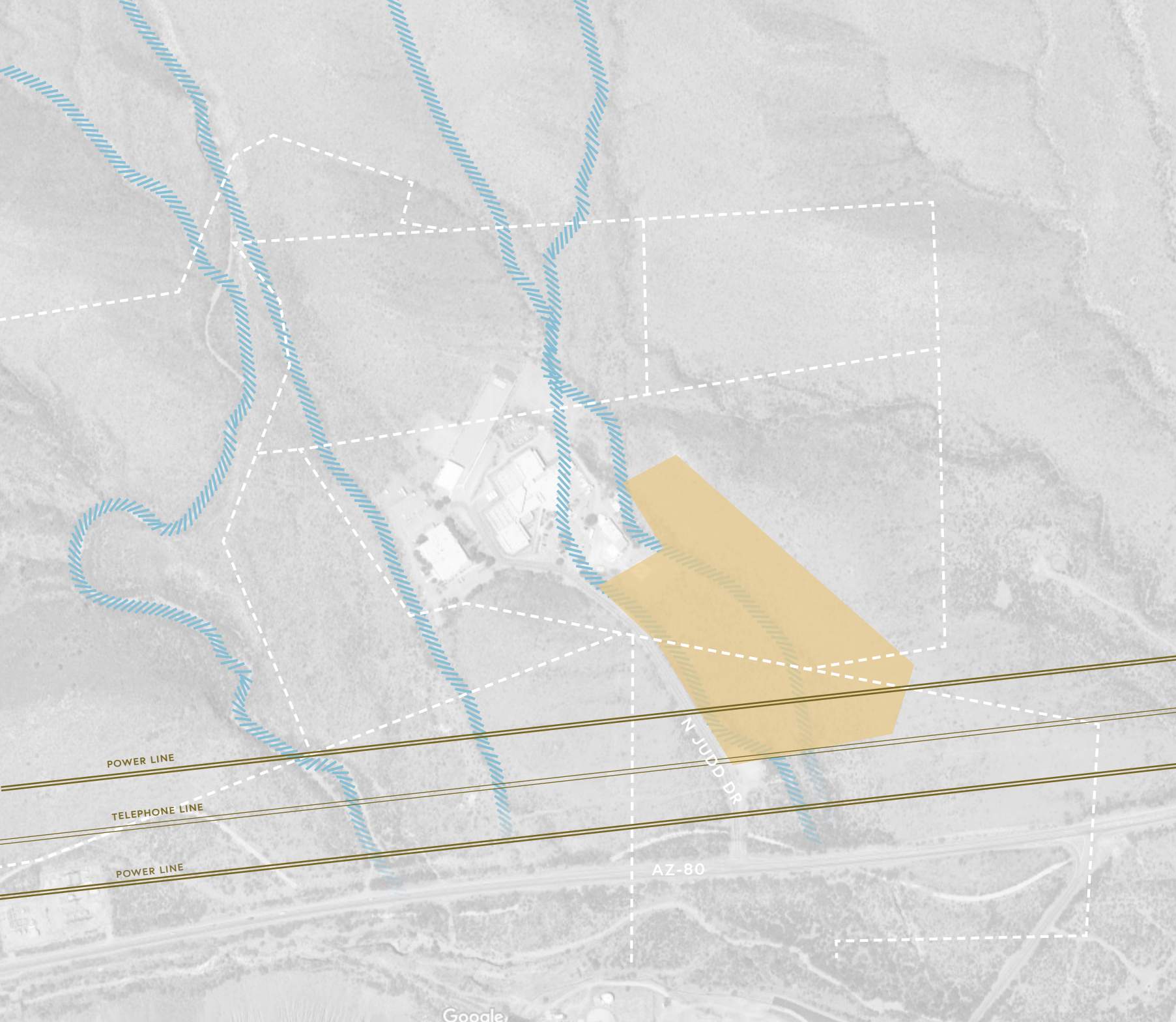
SITE STUDY B

PROS

- 1) Relatively Flat Site
- 2) Takes up less site with two story housing
- 3) Room for expansion of housing

CONS

- 1) Program extends under power lines
- 2) Existing Site Drainage
- 3) Need to relocate Helipad
- 4) Buildings will be close to main access road



PROPOSED SITE

LEGEND

- ① Building Support
- ② Juvenile
- ③ Work Release
- ④ Social Services
- ⑤ Visitation
- ⑥ Courthouse
- ⑦ Sheriff's Office
- ⑧ Booking
- ⑨ Housing - Gen Pop
- ⑩ Housing - Special Custody
- ⑪ Housing - Future Expansion
- ⑫ Public Parking Lot
- ⑬ Private Parking Lot
- ⑭ Alt Social Services / DA
- ⑮ Shoot House + Range -Existing to Remain
- ⑯ Impound Lot
- ⑰ Existing Jail to be turned into storage
- ⑱ Maintenance - Existing to Remain
- ⑲ Helipad
- Secure Gate
- ➔ Fire Access

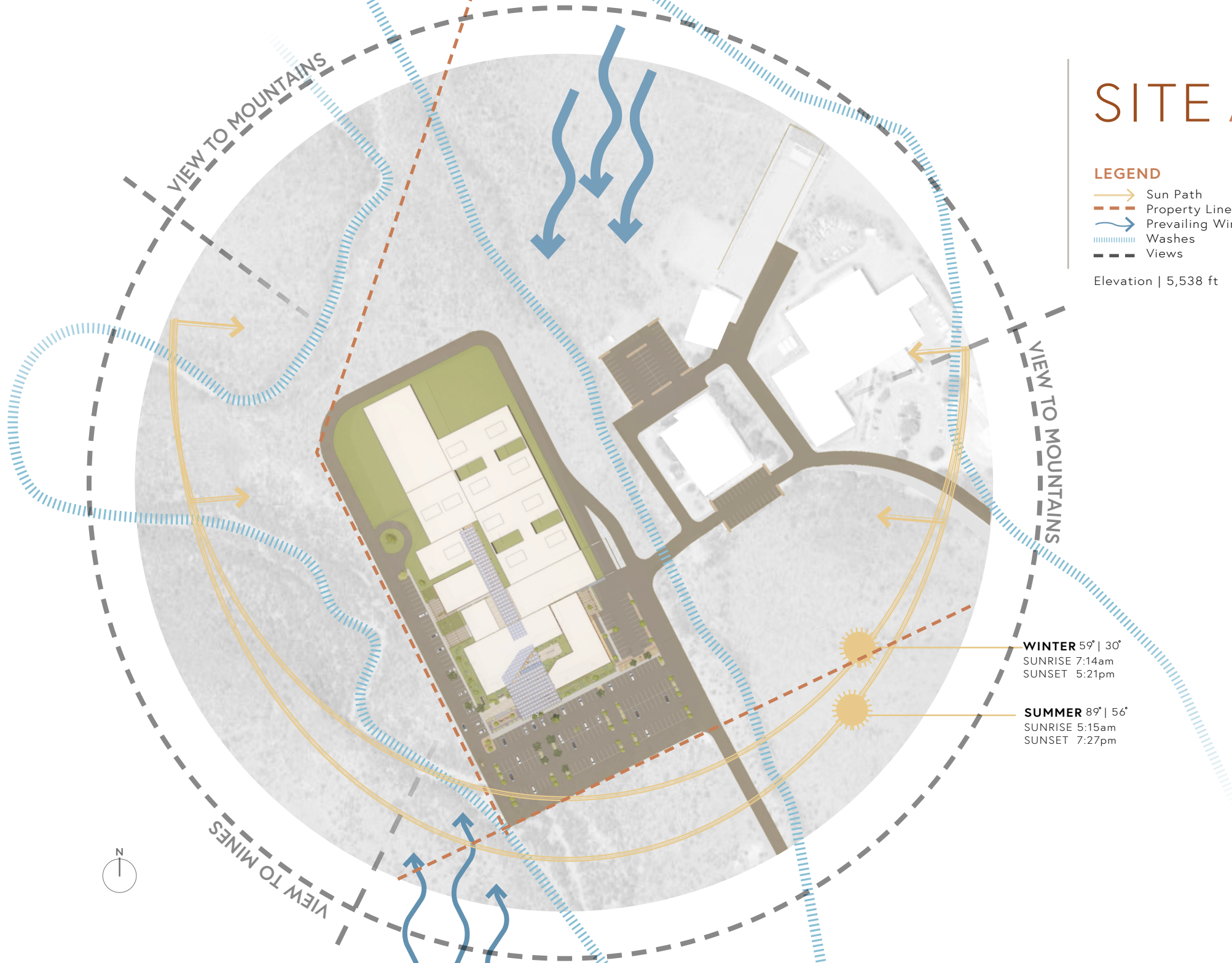


SITE ANALYSIS

LEGEND

- Sun Path
- Property Line
- Prevailing Winds
- Washes
- Views

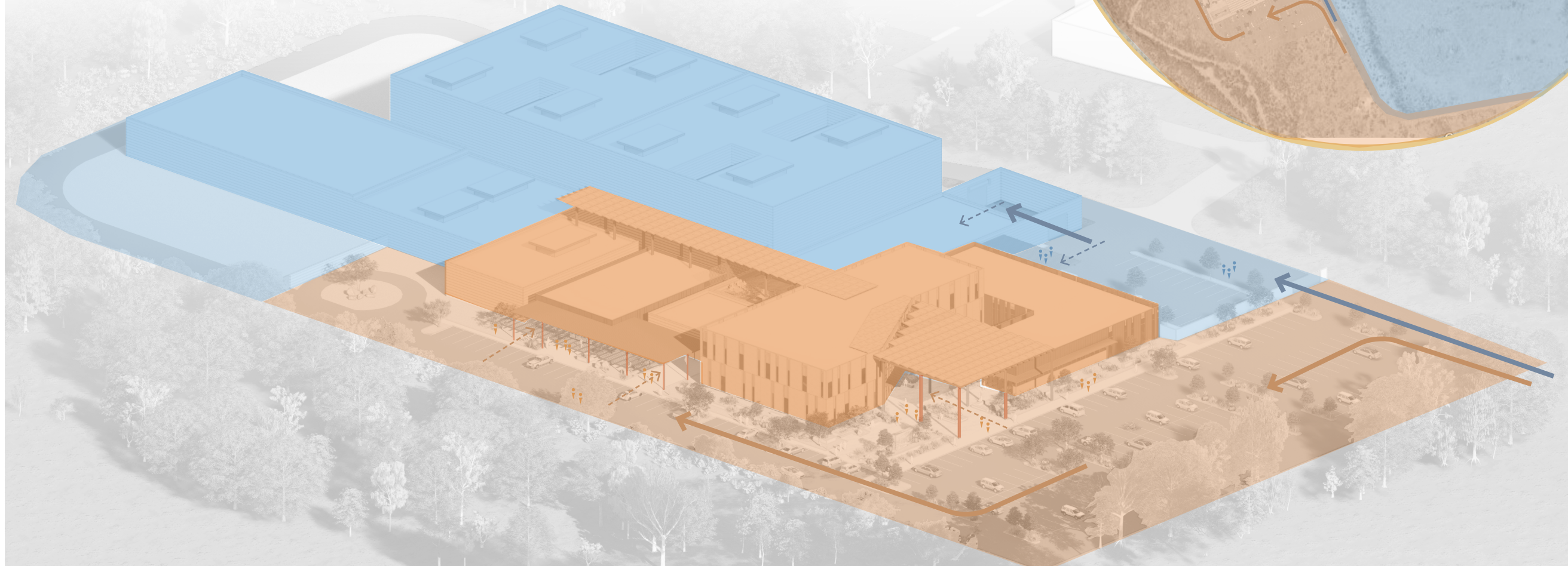
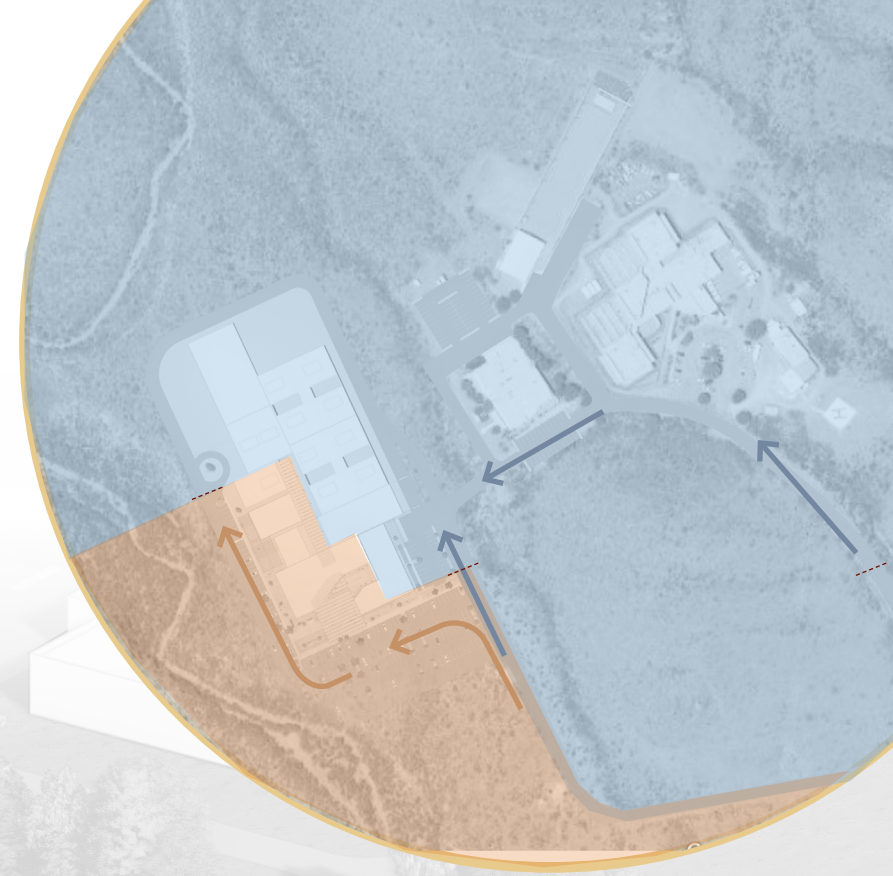
Elevation | 5,538 ft

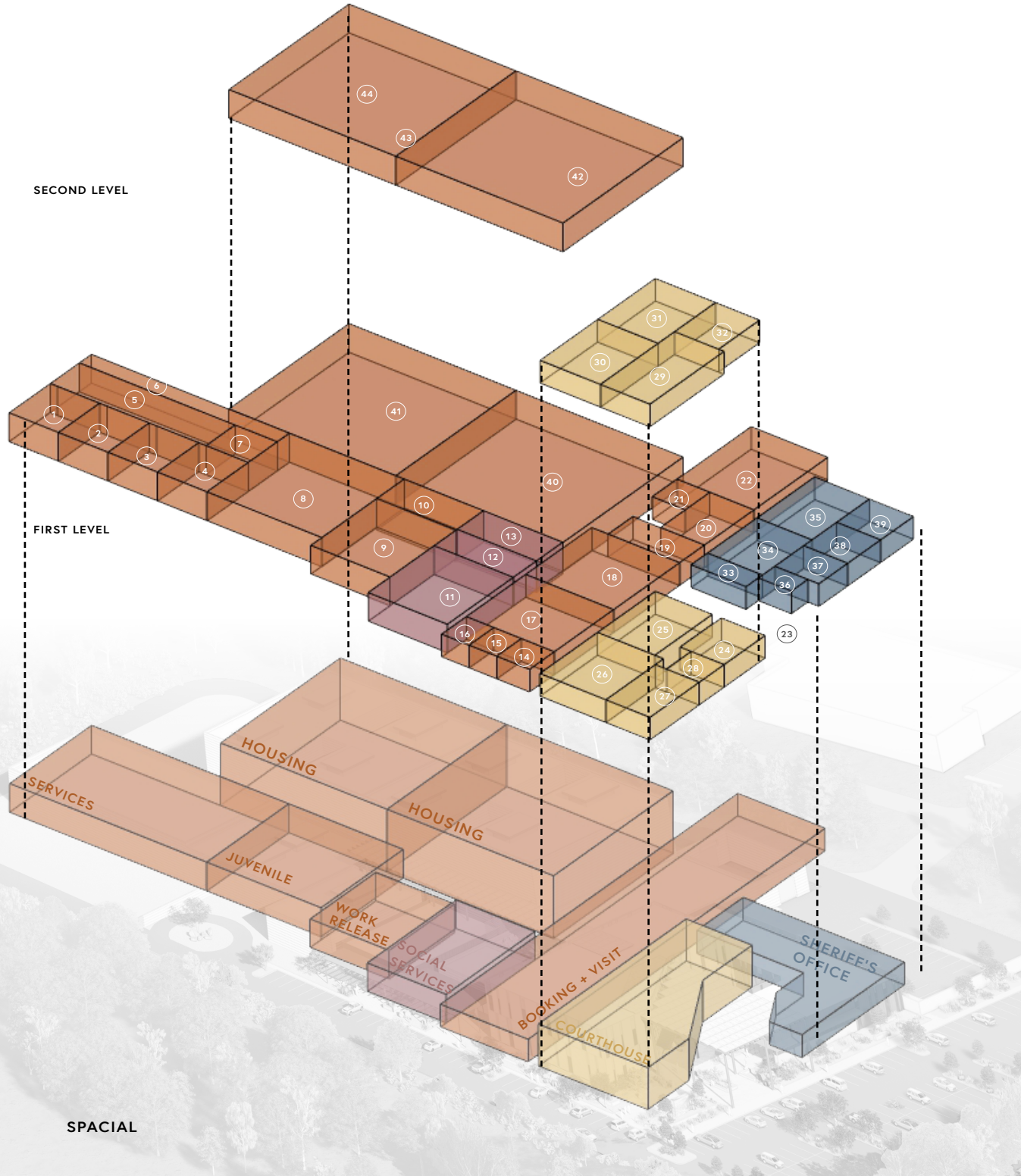


ACCESS PRIVATE VS PUBLIC

LEGEND

- Public Vehicular Access
- - - - -> Public Pedestrian Access
- Private Vehicular Access
- - - - -> Private Pedestrian Access





SERVICES

① Warehouse	2,309 sf
② Laundry	2,284 sf
③ Central Plant	1,999 sf
④ I.A. Courts	2,234 sf
⑤ Food Service	4,787 sf
⑥ Primary Circulation	3,256 sf
⑦ Building Support	1,638 sf

JUVENILE

⑧ Juvenile Housing	9,762 sf
--------------------	----------

WORK RELEASE

⑨ Work Release	6,152 sf
⑩ Courtyard	3,000 sf

SOCIAL SERVICES

⑪ Secure	5,993 sf
⑫ Community Service	1,435 sf
⑬ Courtyard	3,000 sf

BOOKING + VISITATION

⑭ Public Lobby	899 sf
⑮ Visitation	645 sf
⑯ Programs	743 sf
⑰ Staff Training	5,583 sf
⑱ Medical	6,454 sf
⑲ Security Operations	1,959 sf
⑳ Transport/Release	2,250 sf
㉑ Central Control	832 sf
㉒ Intake/Booking	6,466 sf

COURTHOUSE

㉓ Courtyard	899 sf
㉔ Public Lobby	1,995 sf
㉕ Attorney + Probation	4,632 sf
㉖ Court Clerks	4,000 sf
㉗ Central Plant	2,404 sf
㉘ Court Admin	844 sf
㉙ I.A. Court	5,361 sf
㉚ E.R.C Court	5,653 sf
㉛ Justice Court	5,795 sf
㉜ Holding Transport	2,336 sf

SHERIFF'S OFFICE

㉝ Public Lobby	1,022 sf
㉞ Admin	2,933 sf
㉟ Support Services	3,546 sf
㊱ Civil	605 sf
㊲ Records	1,526 sf
㊳ Investigation	1,609 sf
㊴ Patrol	1,660 sf

HOUSING

㊵ General Population	21,655 sf
㊶ Special Custody	25,692 sf
㊷ Medium	20,609 sf
㊸ Medium Maximum	22,851 sf

PROGRAM BLOCKING



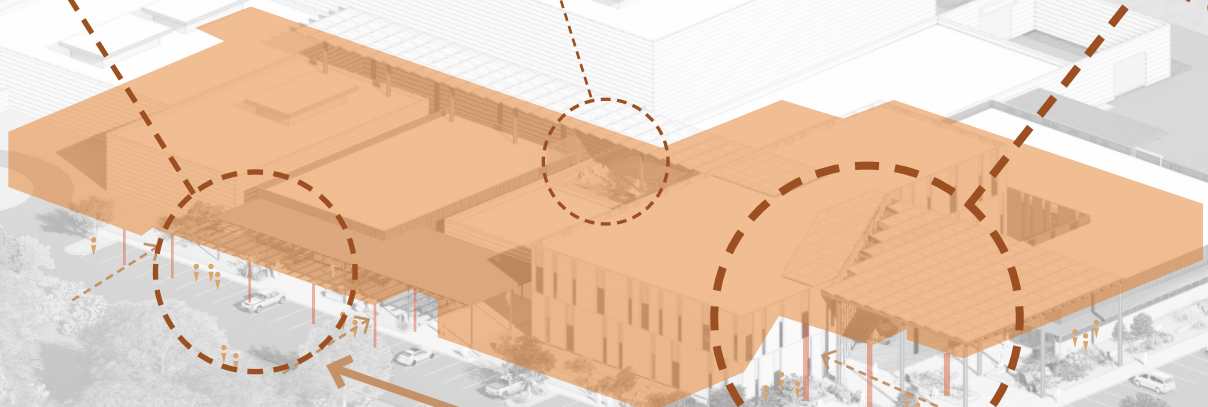
PUBLIC ENTRANCE TO SERVICES



PRIVATE BREAK AREA



PUBLIC ENTRANCE TO COURTHOUSE + SHERIFF



POCKET CONCEPT







FOOD SERVICES

JAIL LOBBY









SHERIFF OFFICE



SHERIFF OFFICE





SOCIAL SERVICES

ARTS CENTER