

# Cochise County BOS Work Session

---



## COVID-19 Overview

Cochise Health and  
Social Services

2/18/2022

**Welcome and Opening Remarks** – Alicia M. Thompson, DrPH, LMSW, Health Director

### **COVID-19 Trends**

- **Case Counts** – Martha Montano, Lead Epidemiologist
- **School Update** – Daniel Williamson, MPH – School Epidemiologist
- **Targeted Case Investigation & Contact Tracing** – Alicia M. Thompson

### **Recommendation For Future Meetings**

### **Review of Actions taken During 3<sup>rd</sup> Surge Response**

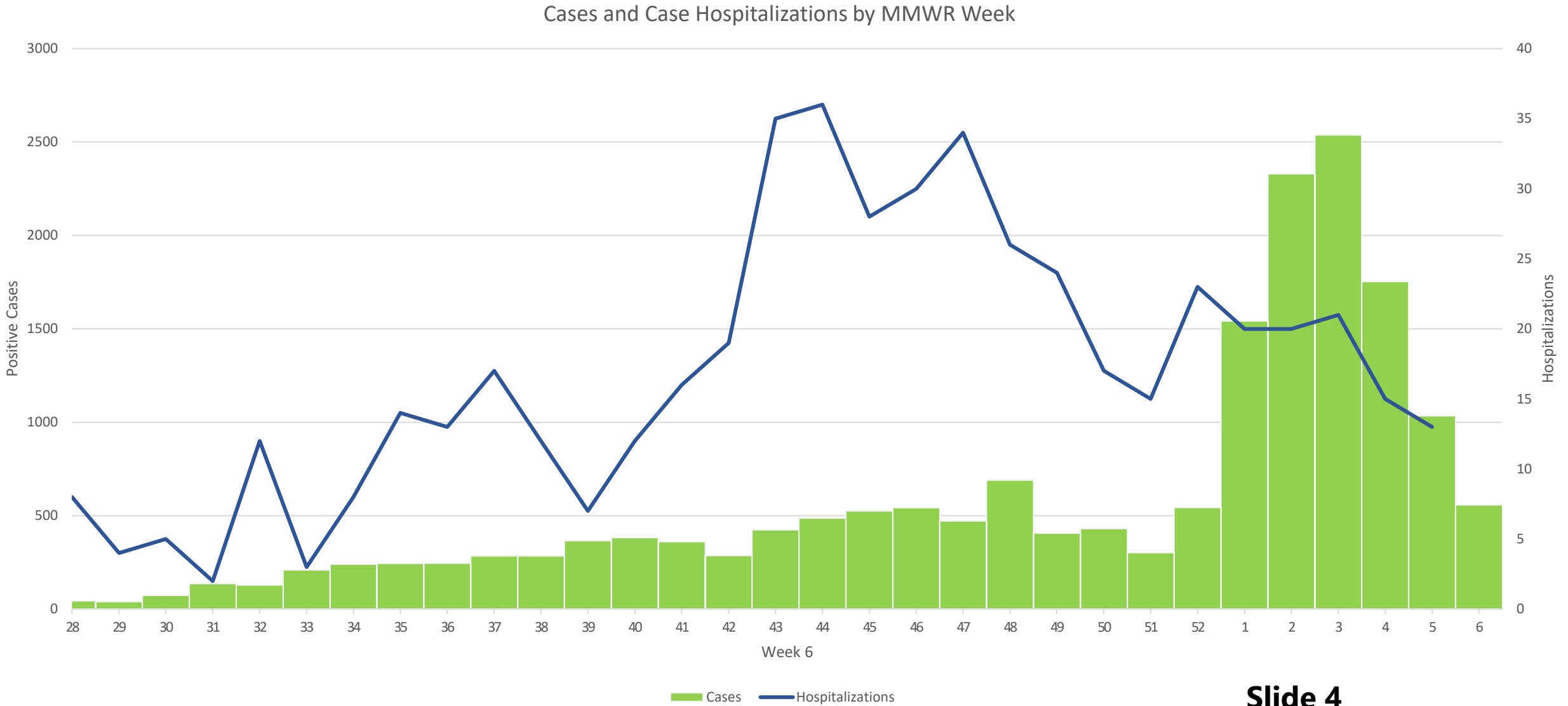
**Q&A** - BOS

### As 02/16/2022 for Cochise County

<b>Confirmed cases:</b>	<b>30,489 (+1,776 since 2/4)</b>
<b>Hospitalizations:</b>	<b>1,279 (+31)</b>
<b>Deaths:</b>	<b>529 (+18)</b>

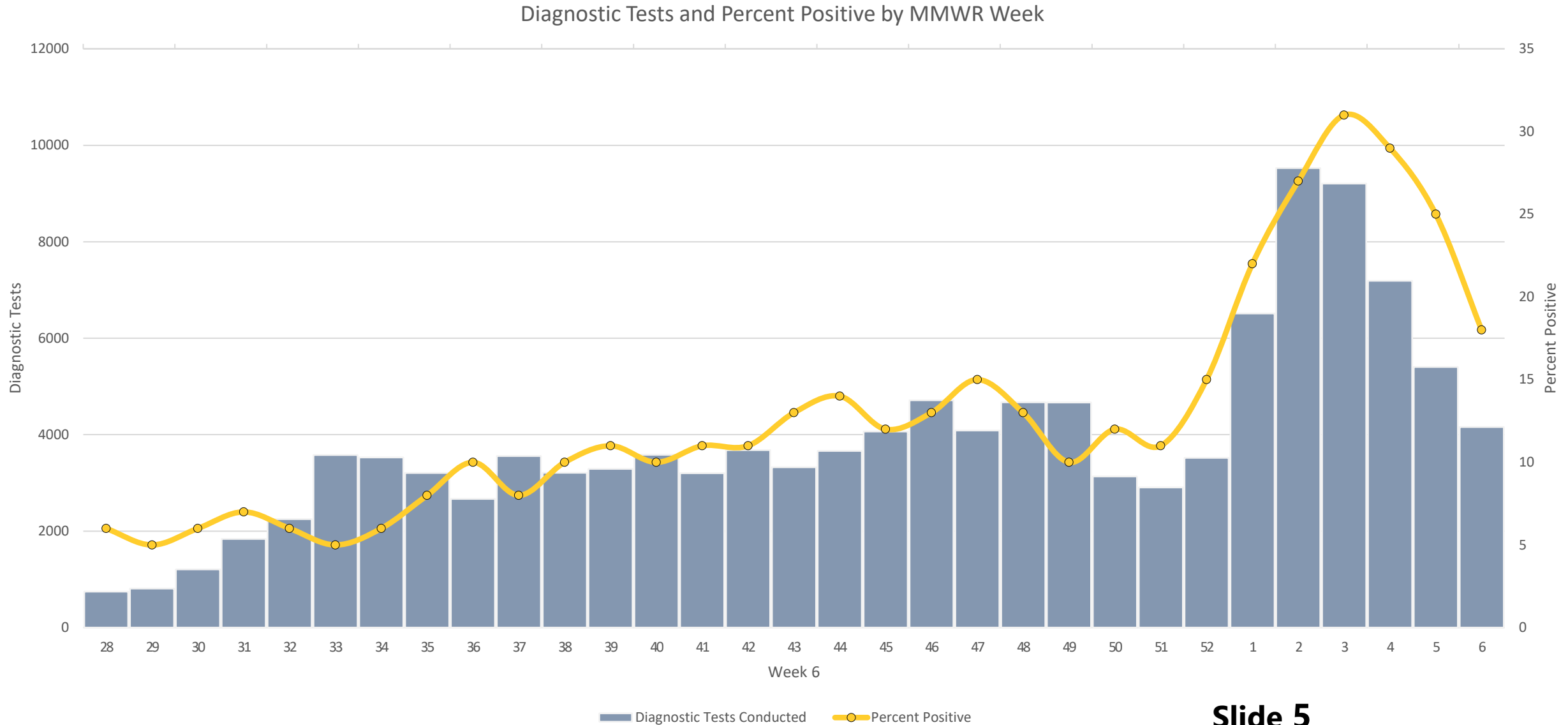
# COVID-19 Work Session 2/18/22

## Cases & Hospitalizations



# COVID-19 Work Session 2/18/22

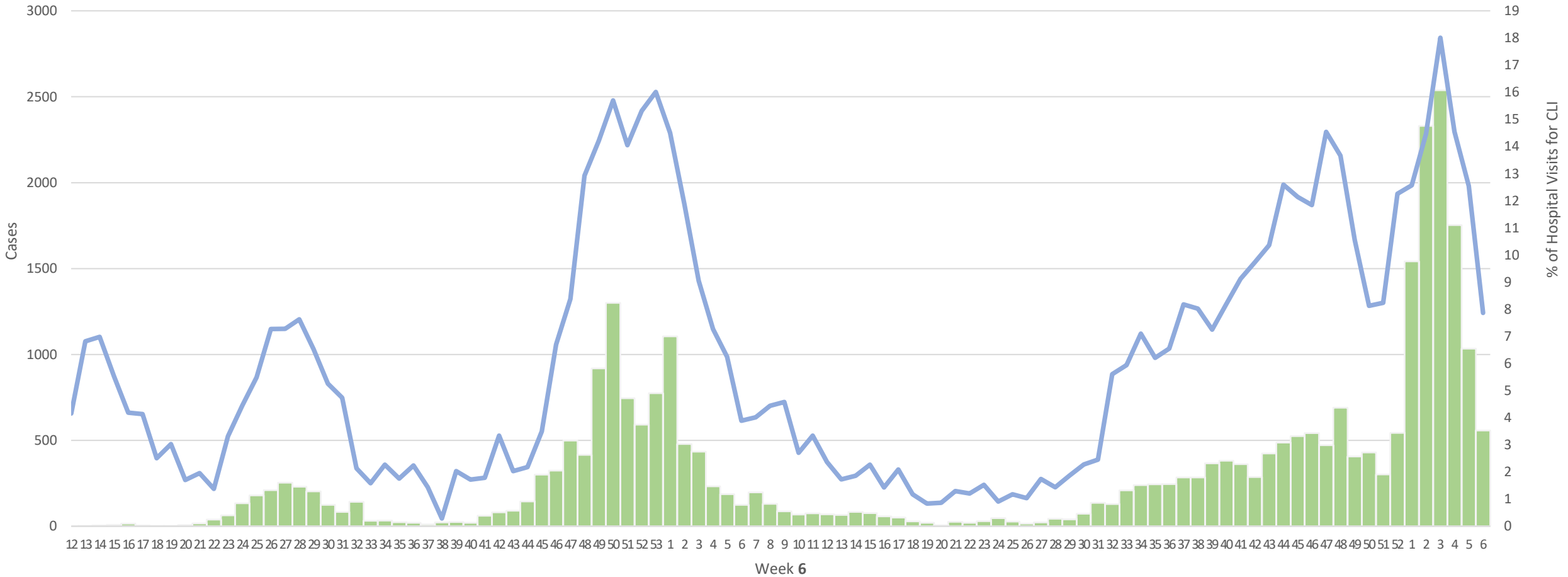
## % Positive



# COVID-19 Work Session 2/18/22

## Cases & CLI ED Visits

Cases and Hospital Visits for COVID Like Illness by MMWR Week



Cases Percent CLI Visits

## As of 2/16/22

- **1250** school related cases since the start of the semester (1/3/22).
  - Up **189** (-63%) new cases since our last meeting (2/4/22).
  - **15%** of total cases have been added since the last meeting (2/4/22).
- **32/65** schools have met the outbreak definition since the start of the semester.
  - Up **0** schools from the last meeting (1/19/22).
- **19/65** schools are currently meeting the outbreak definition.
  - Down **3** school from the last meeting (1/19/22).

- On January 24, 2022, a Joint Statement was released recommending **targeted** Case Investigation and Contact Tracing for lab confirmed COVID positive individuals
- CHSS Policy 130100.00 – COVID-19 TARGETED CASE INVESTIGATION AND CONTACT TRACING was implemented on February 10, 2022



- **Based on the current status of the Pandemic as shown in the sharp decline in cases, hospitalizations and deaths, as well as...**
- **The move away from Universal Case Investigation & Contact Tracing;**
- **The CHSS team recommends holding COVID-19 Work Sessions on an “As Needed” basis going forward**

# COVID-19 Work Session 2/18/2022

What has Clinical Services done during the 3rd COVID Surge?

- **Education**

- Provided education to our County Residents
- Provided vaccine updates to our local Health Care Providers

- **Vaccination**

- CCHSS nursing staff have provided vaccines at mobile clinics throughout the county and at our 5 clinics
- Provided resources to our vaccination partners throughout the county

- **Testing**

- Perform Rapid Testing for residents in our Willcox and Benson locations
- Referrals to providers for ongoing COVID treatment after positive result

- Continue to provide monthly updates to Vaccine Providers with information from AzDHS
  - Vaccination ordering and storage
  - Proper vaccination schedules
  - Changes in vaccination regimen according to new evidence
  - Monoclonal antibody therapy changes and updates
  - Oral antiviral therapies as they became available
  - Testing supplies availability and ordering guidelines
- Community and Patient Education
  - Thanks to our PIO for providing information to our county residents
  - Providing PSAs in English/Spanish
  - Education individualized to patients via telephone or in-person counseling
    - Our clerks in the clinics were a tremendous help with answering questions

- Vaccination changes seen through the past surge
  - Began booster vaccines for Moderna and Pfizer for adults 18+ Years
    - Assisted Fry Fire in COVID outreach clinics serving 500+ residents
    - Had outreach clinics serving rural locations in Portal, San Simon, Bowie, Willcox and Benson
  - Initiated Pfizer primary vaccinations for children 12-18 Years
  - Added Pfizer booster vaccinations for the 12+ age group
  - Initiated Pfizer primary vaccinations for 5–11-year-olds
  - Updated consent forms and fact sheets for each change in vaccination schedules to provide the most accurate information to residents
  - Purchased refrigerators and coolers to maintain and transport vaccines to various locations



Arizona State Prison	Douglas				
BeeWell Pharmacy	Sierra Vista				
Benson Hospital	Benson				
Canyon Vista Medical Center	Sierra Vista				
Chiricahua Health Clinics	Benson	Bisbee	Douglas	Sierra Vista	Willcox
Cochise County Health and Social Services	Benson	Bisbee	Douglas	Sierra Vista	Willcox
Copper Queen Community Hospital	Bisbee	Douglas			
Copper Queen Community Hospital Rural Health Clinics	Bisbee	Douglas	Hereford	Tombstone	
CVS Pharmacy	Douglas	Sierra Vista			
Family Health Center of Sierra Vista	Sierra Vista				
Food City/United Drug	Sierra Vista				
Fry's Pharmacy	Sierra Vista				
Genoa Health Care Group	Sierra Vista				
Kaplan Family Care Center	Sierra Vista				
LCS Healthcare Group	Sierra Vista				
Medicine Shoppe Pharmacies	Benson	Willcox			
New Era Family Practice	Sierra Vista				
North Cochise Community Hospital Pharmacy	Willcox				
Optima Medical	Sierra Vista				
Patel Medical Clinic	Sierra Vista				
Regent Physicians of Arizona	Sierra Vista				
Safeway Stores	Sierra Vista	Bisbee	Willcox	Benson	
Sierra Pharmacy and Compounding Lab	Sierra Vista				
Sierra Vista Internal Medicine	Sierra Vista				
Sulfur Springs Medical Center	Willcox				
Valley Vista Medical Center	Sierra Vista				
Walker Family Medicine	Willcox				
Wal-Mart Pharmacies	Sierra Vista	Benson	Douglas		
Wilde Desert Family Medicine	Sierra Vista				

Special Thanks to Fry Fire and SV Fire for their mass vaccination PODs! A total of 9,304 total vaccines administered at 26 points of dispensing!

Special Thanks to U of A Mobile Clinics and the Mexican Consul! A total of

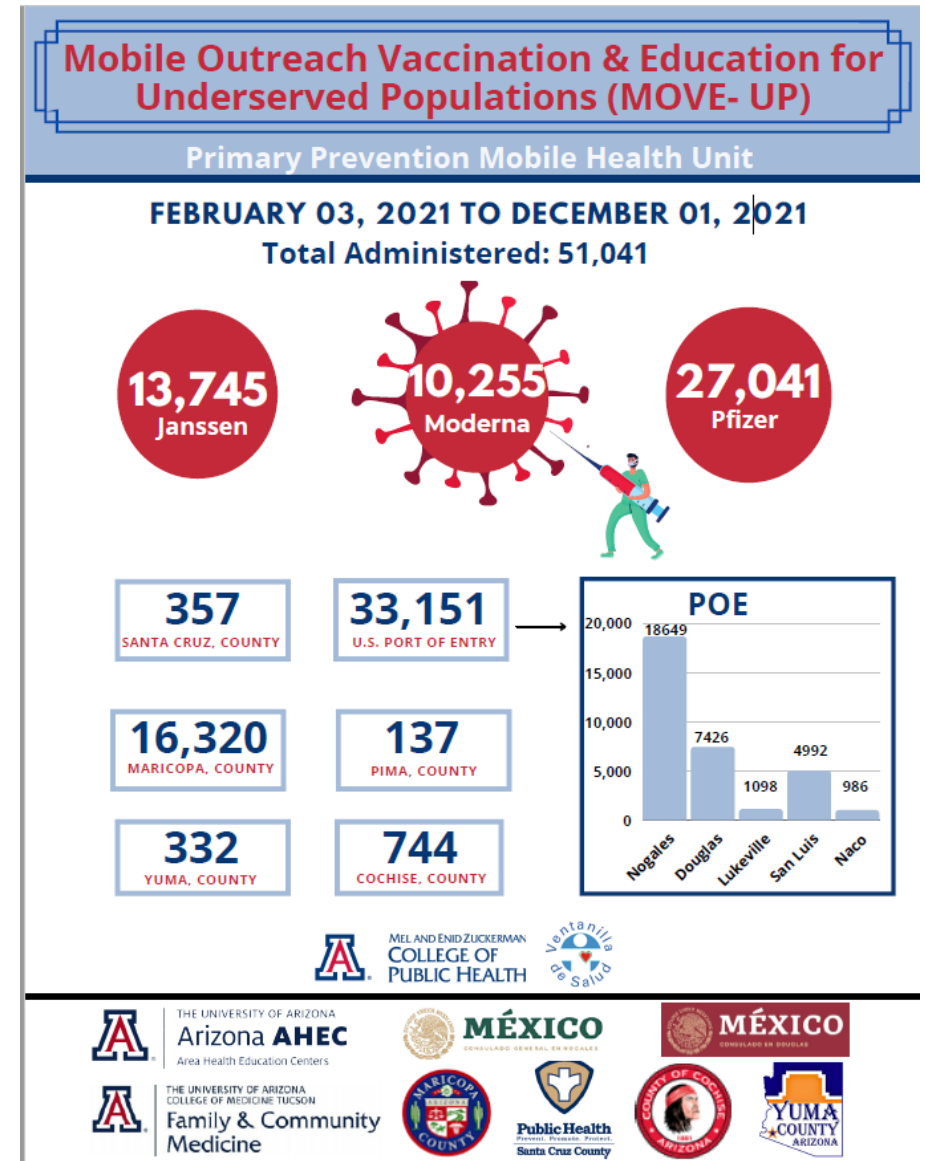
**Cochise County Vaccination Partners – Thank You! You are appreciated!**

- **Fry Fire, Sierra Vista Fire and Cochise College of Nursing in 2021**
  - 26 Points of Dispensing (PODs)
  - 9,304 total vaccines administered



## Mobile Outreach Vaccination & Education for Underserved Populations (MOVE-UP)

- 9,156 vaccines provided in Cochise County



- **Actions taken through Hospital Surge**

- Meetings with Hospital CEO's on path to take during hospital surge for decompression strategies and plans,
- CVMC requested staffing, Cochise County Public Health sent request to our Cochise County Emergency Management Team and they sent in the requests for staffing. Paramedic Strike Team (10 medical personnel) on site and a new DOD Team (7 medical personnel) just started this week.
- Covid test distribution through Cochise County to facilities
- Constant communication with Cochise County PIO to ensure Covid related information is being relayed to community
- Meetings, communications, and plans for covid testing in rural areas of Cochise County

- **Actions taken through Hospital Surge**
  - Meetings and communications on mass fatality management with multiple partners
    - Mobile morgue coolers for placement throughout Cochise County
  - WhatsApp utilized daily on Hospital situational awareness 24/7, 365/year
    - Cochise County Hospital → Cochise County Public Health Emergency Preparedness → Arizona Department of Health Services → AzCHER
  - Continuously in communications with AZDHS, AZCHER, Cochise County Emergency Management Team and other partners for resources requested by the hospitals.
    - Patient transfers to High Level of Care
    - Blood Shortages
    - Medication Shortages
    - Equipment Needs

## COVID-19 County Assistance to the Schools:

- Providing a point of contact for all school officials for questions regarding mitigation measures and isolation and quarantine guidance.
- Compiling and maintaining a database of school related cases in order to monitor outbreak situations.
- Presenting case information and updates to the school superintendents.
- Aiding the schools in communicating with parents when needed.

- During the surge in Covid-19 cases resulting from the Delta variant, Rapid-Trace brought on additional case investigators. This allowed the Rapid-Trace team to reach more of the community and provide access to Covid-19 education and connect the community to valuable resources.
- Rapid-Trace brought on additional investigators with the Omicron surge to reach more the community.
- With each surge, Rapid-Trace works to identify potential outbreaks in community. When dealing with a potential outbreak, we will reach out to verify the number of known cases and Covid mitigation standards. This is particularly important when dealing with a location that deals with vulnerable members of the community.
- Due to this most recent surge, many members of the community have been more open to Covid-19 education. The Rapid-Trace investigators have used this as an opportunity to focus on encouraging mask wearing, frequent handwashing, and vaccinations.

# **QUESTIONS/COMMENTS?**