

ABBREVIATIONS

BOT	BOTTOM
Ø/DIA	DIAMETER
DWG	DRAWING
EL	ELEVATION
E	EASTING
FT	FEET
GCCS	GAS COLLECTION CONTROL SYSTEM
HDPE	HIGH DENSITY POLYETHYLENE
LCRS	LEACHATE COLLECTION AND REMOVAL SYSTEM
LFG	LANDFILL GAS
MIN	MINIMUM
N	NORTHING
(NIC)	NOT IN CONTRACT
NTS	NOT TO SCALE
OPS	OPERATIONS LAYER
%	PERCENT
PERF	PERFORATED
PVC	POLYVINYL CHLORIDE
S	SLOPE
SDR	STANDARD DIMENSION RATIO
TYP	TYPICAL
WSEL	WATER SURFACE ELEVATION
W/	WITH

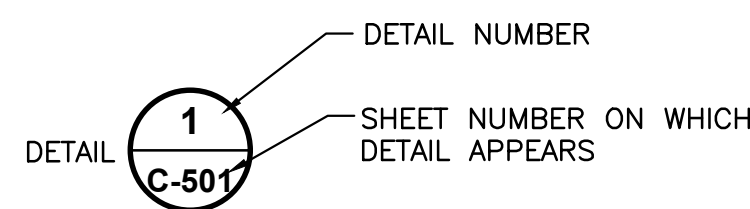
CONSTRUCTION PLANS FOR CELL 5 LINER

PREPARED FOR WESTERN REGIONAL LANDFILL COCHISE COUNTY, ARIZONA

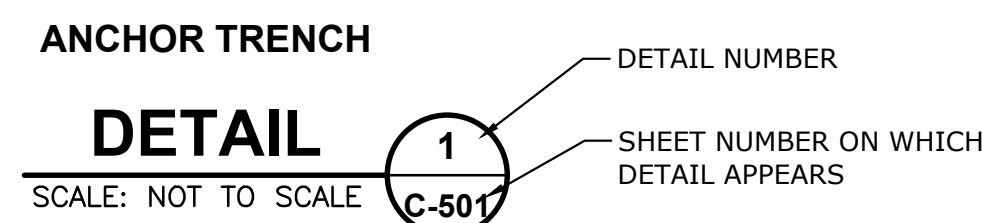
FEBUARY 2023

DETAIL INDICATOR:

SHEET ON WHICH DETAIL IS REFERENCED:

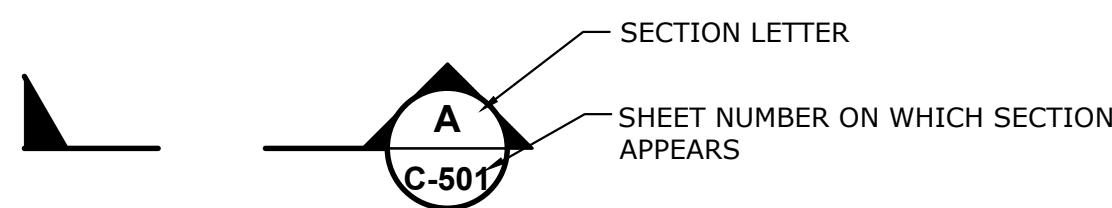


SHEET ON WHICH DETAIL APPEARS:

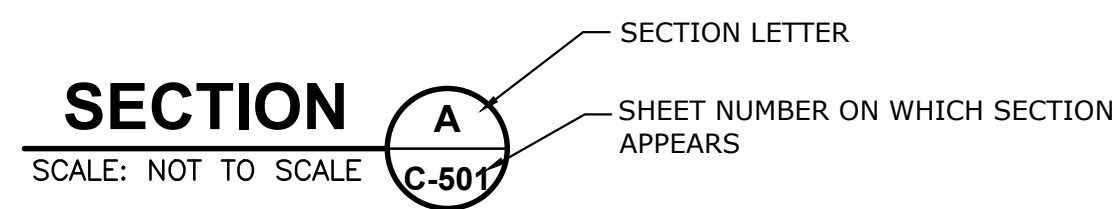


SECTION INDICATOR:

SHEET ON WHICH SECTION IS CUT:

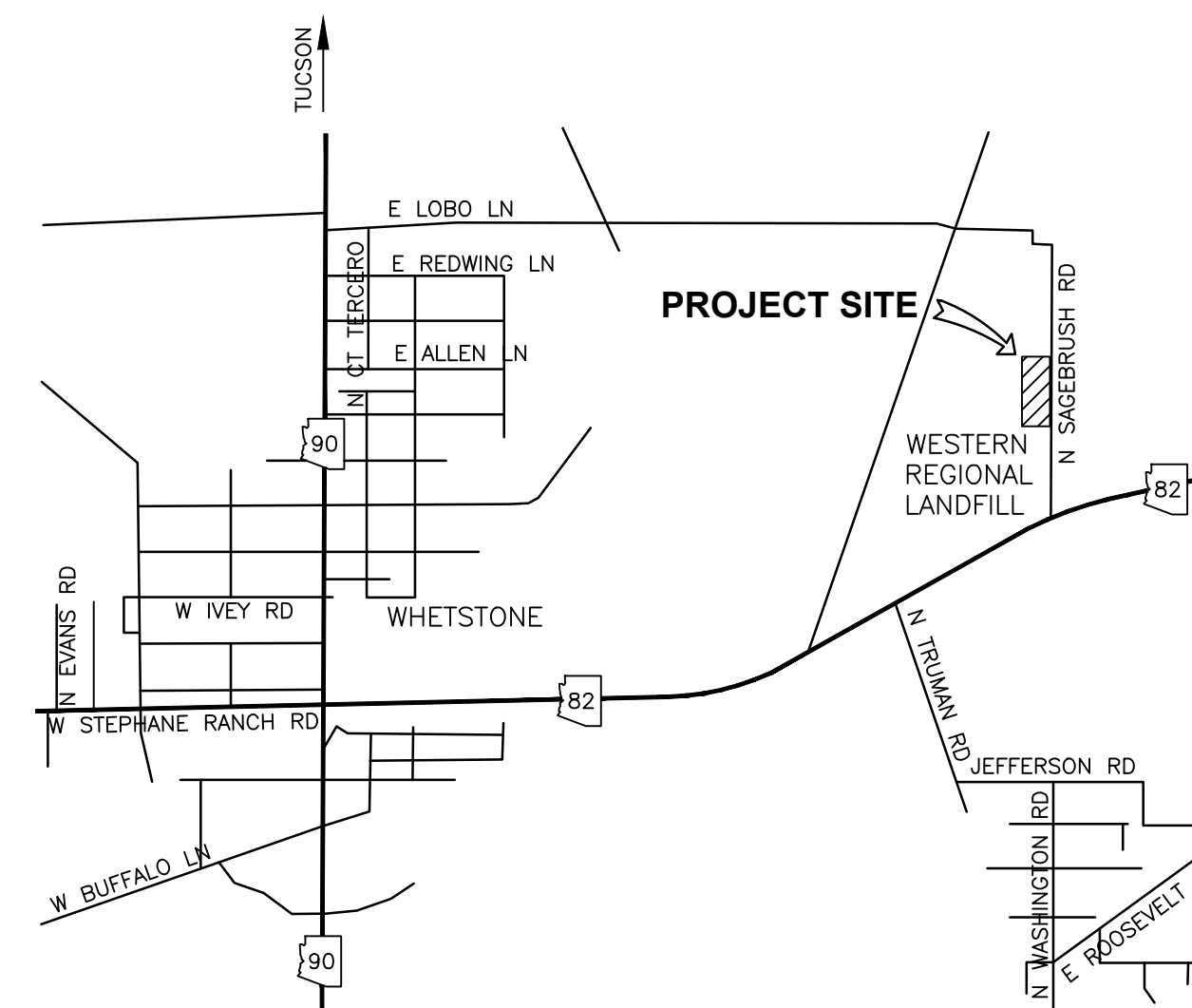


SHEET ON WHICH SECTION APPEARS:



SHEET INDEX

- C-001 COVER SHEET
- C-100 SITE DEVELOPMENT PLAN
- C-101 EXCAVATION PLAN
- C-102 BASE LINER AND LCRS PLAN
- C-301 LANDFILL SECTIONS
- C-501 LINER DETAILS
- C-502 MISCELLANEOUS DETAILS



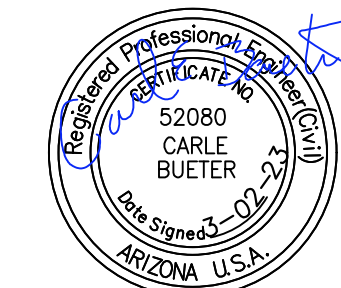
SCALE: NOT TO SCALE
SOURCE: GOOGLE MAPS

LOCATION MAP

X:\WESTERN REGIONAL\220036 - CELL 5 LINER - Project Drawings\220036-C-01 COVER.DWG 3/2/2023 10:29 AM



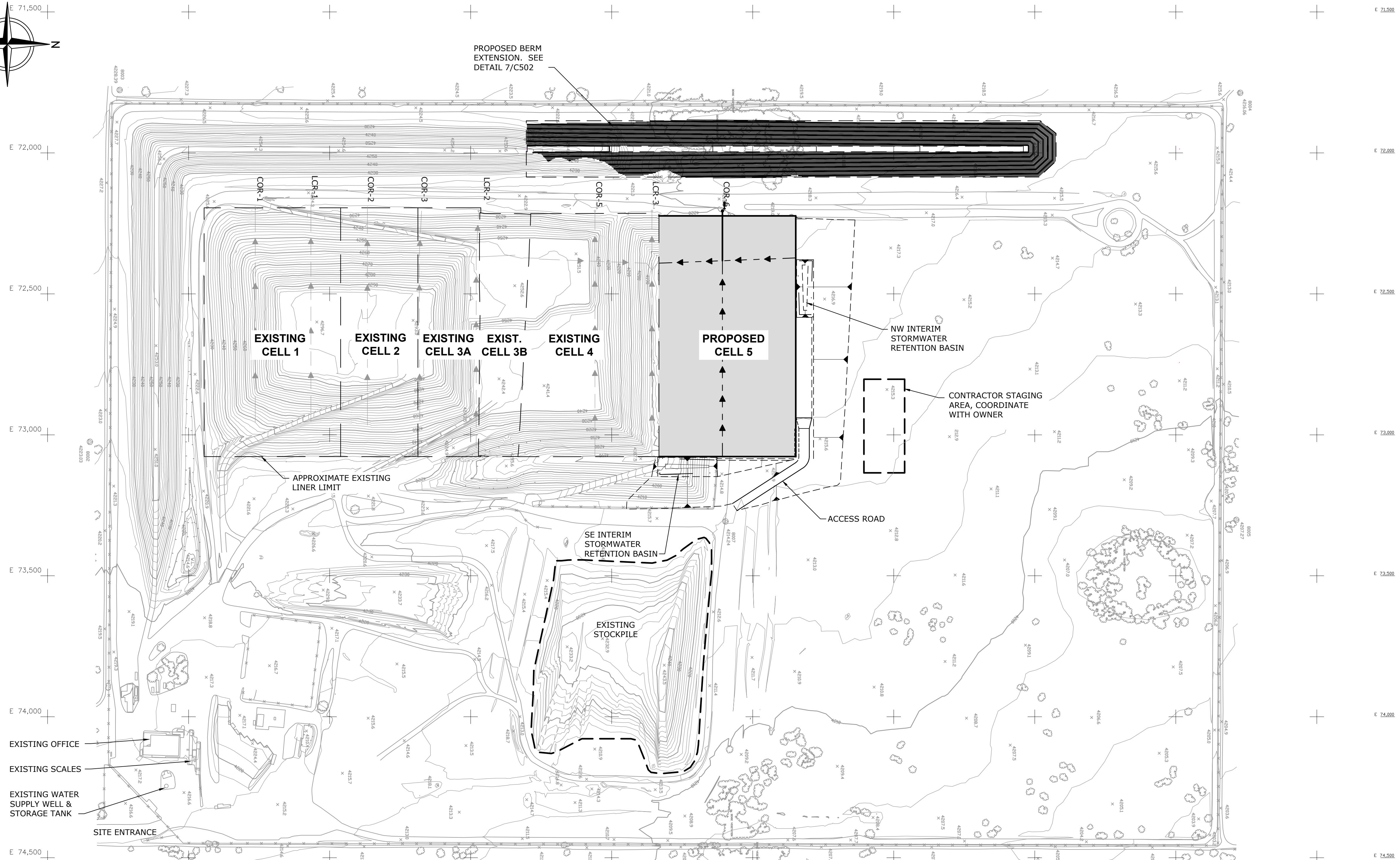
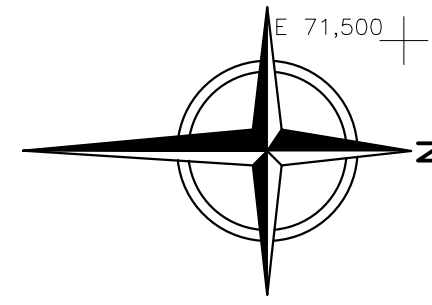
REV	REVISION DESCRIPTION	DATE



WESTERN REGIONAL LANDFILL CELL 5 LINER		
COVER SHEET		
DESIGNED BY : MDC	CHECKED BY : CEB	DATE : SEPT. 2022
DRAWN BY : MDC	APPROVED BY : GRB	FILE : 220036-C-001_COVER.DWG

SHEET
C-001

ISSUED FOR CONSTRUCTION

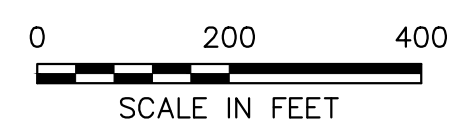


LEGEND:

	EXISTING FENCE
	EXISTING CONTOUR
	EXISTING LINER LIMIT
	EXISTING LCRS PIPE
	PROPOSED LCRS PIPE
	PROPOSED LINER LIMIT
	GRADE BREAK
	EXISTING STOCKPILE
	PROPOSED LINER AREA

- NOTES:**
- CONTRACTOR TO SUPPLY STAND-TANK FOR STORAGE OF CONSTRUCTION WATER. WATER TO BE DIRECTLY SUPPLIED FROM EXISTING WELL UPSTREAM OF CONNECTION TO THE EXISTING PRESSURE TANK. CONTRACTOR TO COORDINATE TANK LOCATION AND OPERATING CONDITIONS WITH OWNER.
 - COORDINATE DATA SHOWN ON THIS DRAWING PLAN SET IS BASED ON TOPOGRAPHY SURVEY PREPARED BY COOPER AERIAL JULY 5, 2022. CONTRACTOR TO VERIFY COORDINATE CONTROL AT A MINIMUM OF 3 POINTS.
 - THE EXISTING UTILITIES SHOWN ON THESE DRAWINGS ARE APPROXIMATE, AND UTILITY LINES MAY EXIST WHERE NONE ARE SHOWN. SOME INFORMATION MAY HAVE BEEN DERIVED FROM INFORMATION PROVIDED TO THE ENGINEER BY OTHERS. SUCH INFORMATION MAY BE INCOMPLETE OR MAY BE OBSOLETE BY THE TIME CONSTRUCTION COMMENCES. CONTACT "BLUE STAKE" AT 811 AND ANY NON-PARTICIPATING UTILITY COMPANIES AT LEAST 48 HOURS BEFORE CONSTRUCTION. THE CONTRACTOR SHALL EXCAVATE AND VERIFY THE HORIZONTAL AND VERTICAL LOCATIONS OF PERTINENT UTILITIES, LANDFILL LINERS, AND OTHER EXISTING FEATURES IN OR NEAR THE AREA OF WORK, WHETHER INDICATED ON THESE DRAWINGS OR NOT. SHOULD A CONFLICT EXIST, THE CONTRACTOR SHALL NOTIFY THE ENGINEER AS SOON AS POSSIBLE. THE CONTRACTOR SHALL EXERCISE DUE CARE TO AVOID DISTURBING ANY UNDERGROUND UTILITIES. THE CONTRACTOR SHALL COORDINATE ANY POTENTIAL DISRUPTIONS IN UTILITY SERVICE WITH THE UTILITY COMPANIES AFFECTED AT LEAST 24 HOURS PRIOR TO THE DISRUPTION. THE CONTRACTOR SHALL REPAIR DAMAGE TO EXISTING UTILITIES AT THE CONTRACTOR'S EXPENSE.
 - CONTRACTOR SHALL VERIFY ALL DIMENSIONS AND COORDINATE SITE CONDITIONS WITH THE DRAWINGS PRIOR TO CONSTRUCTION. ANY DISCREPANCIES AND OMISSIONS SHALL BE RESOLVED WITH PROJECT ENGINEER. DO NOT USE SCALED DIMENSIONS.
 - ALL CONSTRUCTION AND TEST METHODS SHALL BE IN ACCORDANCE WITH PAG STANDARDS AND SPECIFICATION FOR PUBLIC IMPROVEMENTS, LATEST EDITION AND ANY AMENDMENTS THERETO.

X:\WESTERN REGIONAL\220036-C-100 SITE DEVELOPMENT\DWG 220203 1021 AM

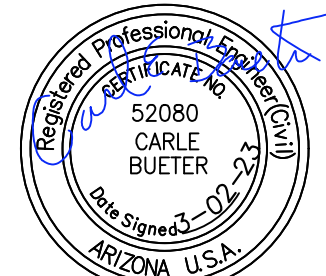


TOPOGRAPHY PREPARED BY COOPER AERIAL SURVEYS CO.
DATED JULY 5, 2022.
VERTICAL DATUM - NAV 88



REV	REVISION DESCRIPTION	DATE

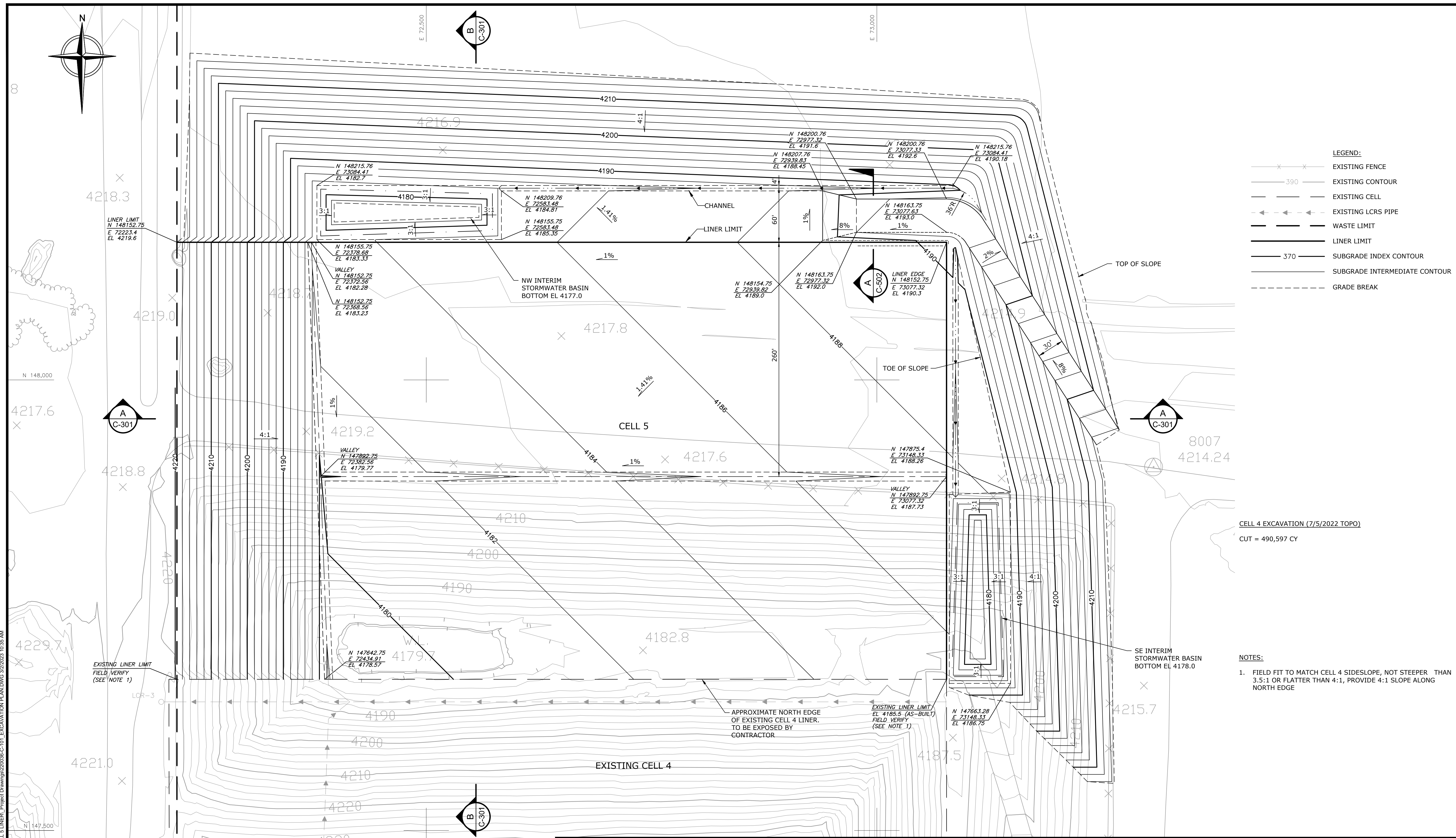
TETRA TECH
800 East Wetmore Road, Suite 230
Tucson, AZ 85719
TEL 520.618.2400



WESTERN REGIONAL LANDFILL		
CELL 5 LINER		
SITE DEVELOPMENT PLAN		
DESIGNED BY: MDC	CHECKED BY: CEB	DATE: SEPT. 2022
DRAWN BY: MDC	APPROVED BY: GRB	FILE: 220036-C-100_SITE DEVELOP PLAN.DWG

SHEET
C-100

ISSUED FOR CONSTRUCTION



- LEGEND:**
- x — x — EXISTING FENCE
 - 390 — EXISTING CONTOUR
 - — — EXISTING CELL
 - <— <— <— EXISTING LCRS PIPE
 - — — WASTE LIMIT
 - — — LINER LIMIT
 - 370 — SUBGRADE INDEX CONTOUR
 - — — SUBGRADE INTERMEDIATE CONTOUR
 - - - - GRADE BREAK

CELL 4 EXCAVATION (7/5/2022 TOPO)
CUT = 490,597 CY

- NOTES:**
- FIELD FIT TO MATCH CELL 4 SIDESLOPE, NOT STEEPER THAN 3.5:1 OR FLATTER THAN 4:1, PROVIDE 4:1 SLOPE ALONG NORTH EDGE

X:\WESTERN REGIONAL\220036-C-101 EXCAVATION PLAN.DWG 3/2/2023 10:35 AM

TOPOGRAPHY PREPARED BY COOPER AERIAL SURVEYS CO.
DATED JULY 5, 2022.
VERTICAL DATUM - NAV 88



REV	REVISION DESCRIPTION	DATE

TETRA TECH
800 East Wetmore Road, Suite 230
Tucson, AZ 85719
TEL 520.618.2400

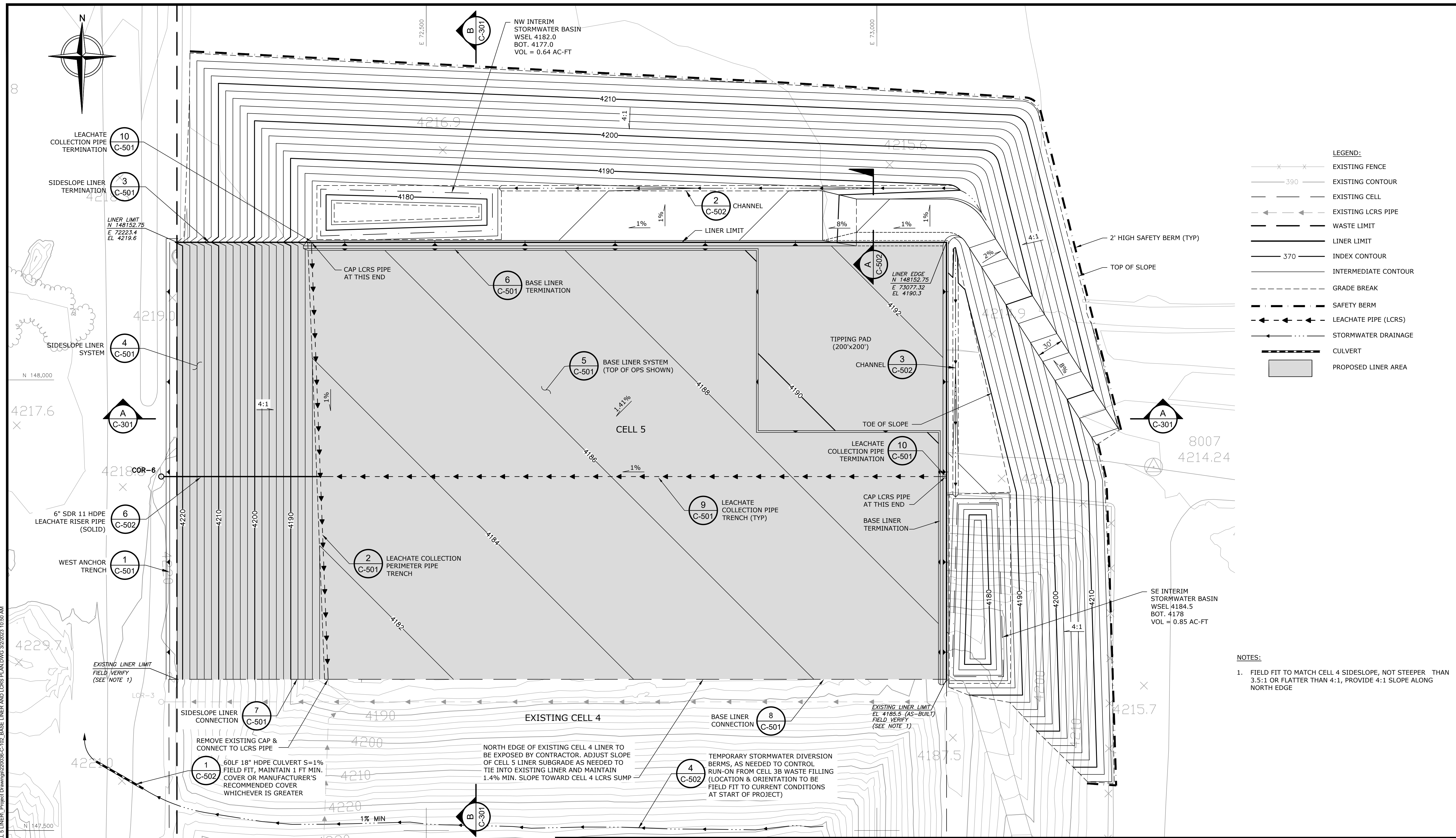
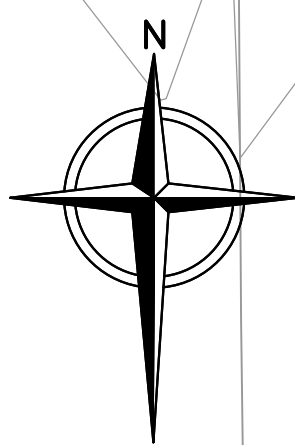


WESTERN REGIONAL LANDFILL
CELL 5 LINER
EXCAVATION PLAN

DESIGNED BY: MDC CHECKED BY: CEB DATE: SEPT. 2022
DRAWN BY: MDC APPROVED BY: GRB FILE: 220036-C-101_EXCAVATION PLAN.DWG

SHEET
C-101

ISSUED FOR CONSTRUCTION



- LEGEND:**
- x — x — EXISTING FENCE
 - 390 — EXISTING CONTOUR
 - — — EXISTING CELL
 - ← ← ← ← ← EXISTING LCRS PIPE
 - — — WASTE LIMIT
 - — — LINER LIMIT
 - 370 — INDEX CONTOUR
 - — — INTERMEDIATE CONTOUR
 - - - - - GRADE BREAK
 - — — SAFETY BERM
 - ← ← ← ← ← LEACHATE PIPE (LCRS)
 - — — STORMWATER DRAINAGE
 - — — CULVERT
 - PROPOSED LINER AREA

- NOTES:**
1. FIELD FIT TO MATCH CELL 4 SIDESLOPE, NOT STEEPER THAN 3.5:1 OR FLATTER THAN 4:1, PROVIDE 4:1 SLOPE ALONG NORTH EDGE

X:\WESTERN REGIONAL\220306-C-102 BASE LINER AND LCRS PLAN.DWG 3/2/2023 10:50 AM

ISSUED FOR CONSTRUCTION

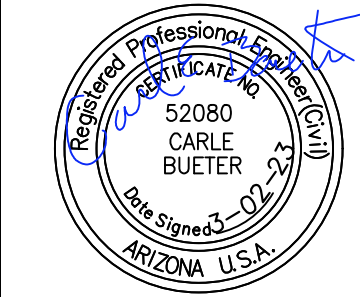
SCALE IN FEET
0 50 100

TOPOGRAPHY PREPARED BY COOPER AERIAL SURVEYS CO.
DATED JULY 5, 2022.
VERTICAL DATUM - NAV 88



REV	REVISION DESCRIPTION	DATE

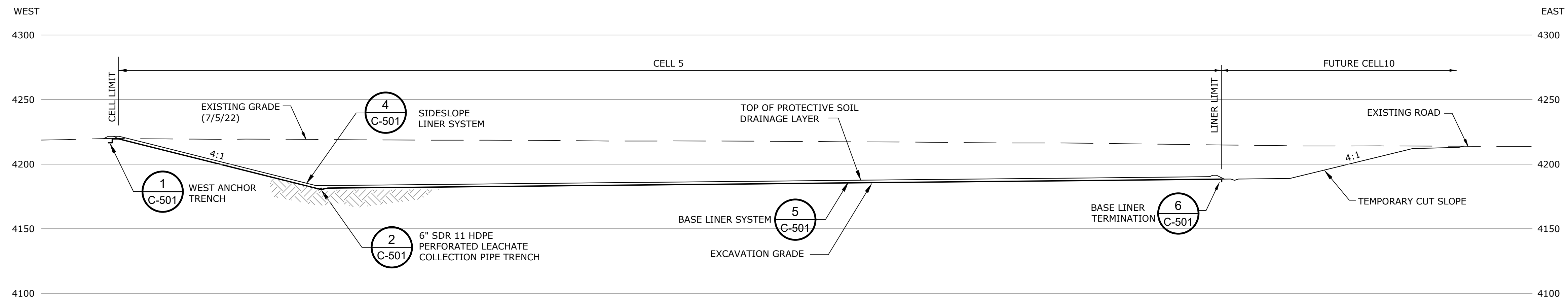
TETRA TECH
800 East Wetmore Road, Suite 230
Tucson, AZ 85719
TEL 520.618.2400



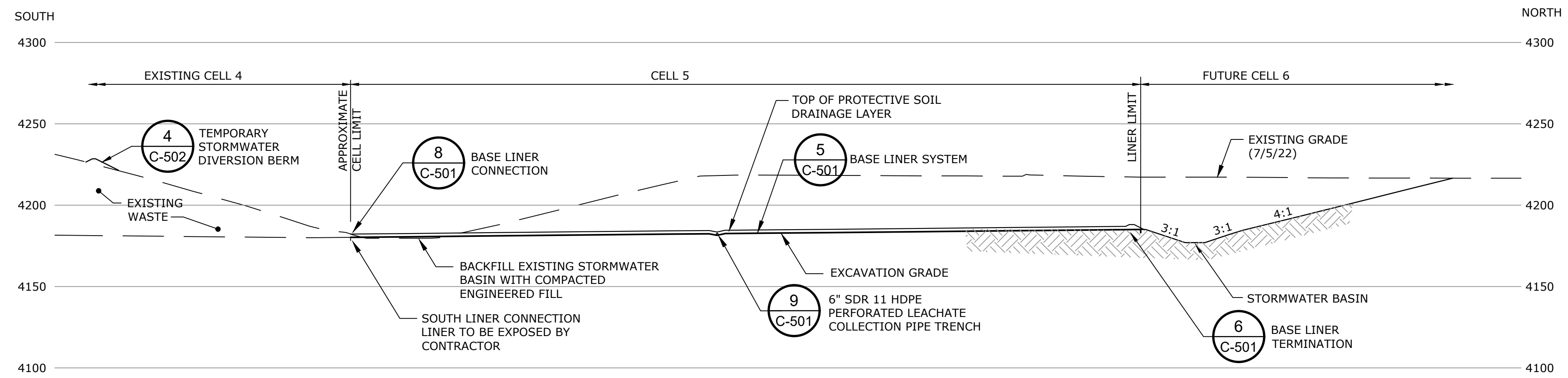
WESTERN REGIONAL LANDFILL
CELL 5 LINER
BASE LINER AND LCRS PLAN

DESIGNED BY: MDC CHECKED BY: CEB DATE: SEPT. 2022
DRAWN BY: MDC APPROVED BY: GRB FILE: 220306-C-102_BASE LINER AND LCRS PLAN.DWG

SHEET
C-102



SECTION A
SCALE: 1"=50'

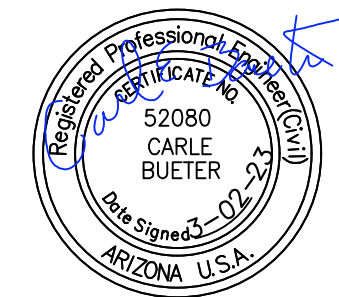


SECTION B
SCALE: 1"=50'

X:\WESTERN REGIONAL\220036 - CELL 5 LINER\Project Drawings\220036-C-301_LF SECTIONS.DWG 2/2/2023 10:59 AM

This drawing represents intellectual property of Tetra Tech. Any reproduction, in whole or in part, without the written consent of Tetra Tech is prohibited. Tetra Tech shall not be held liable for any changes made to this document without express written consent of the engineer.

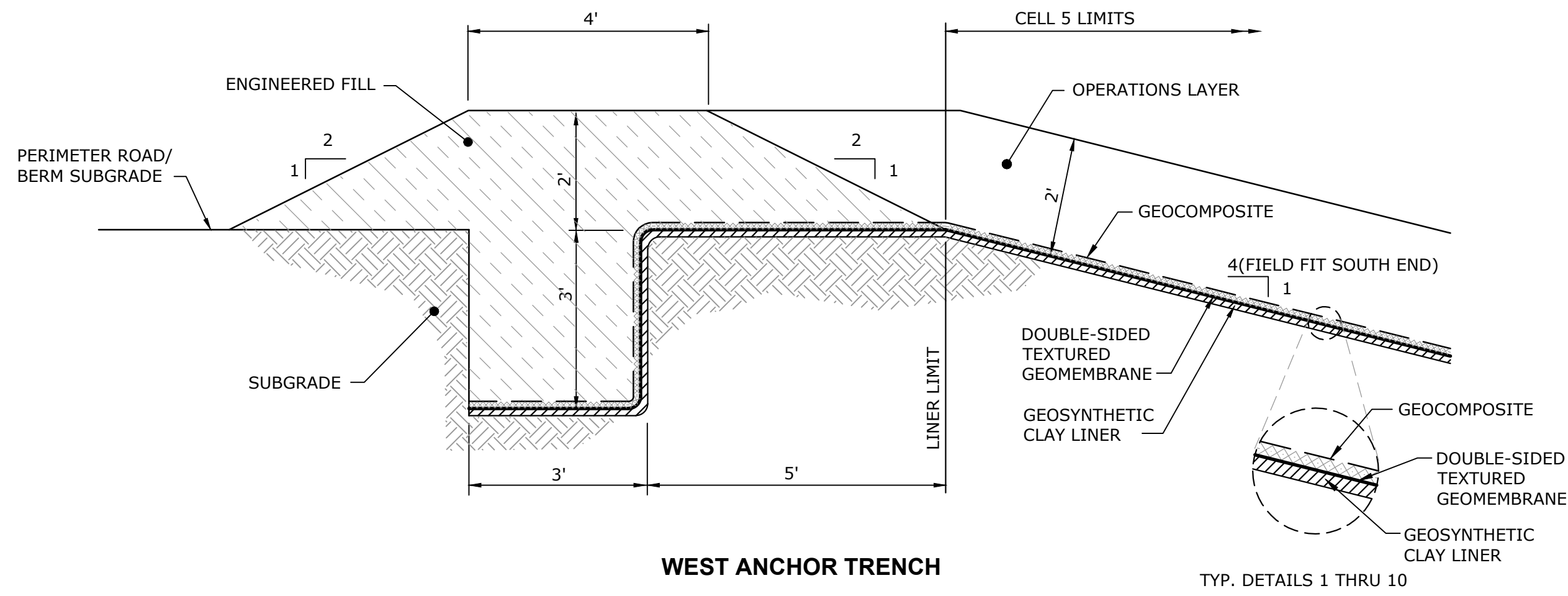
REV	REVISION DESCRIPTION	DATE



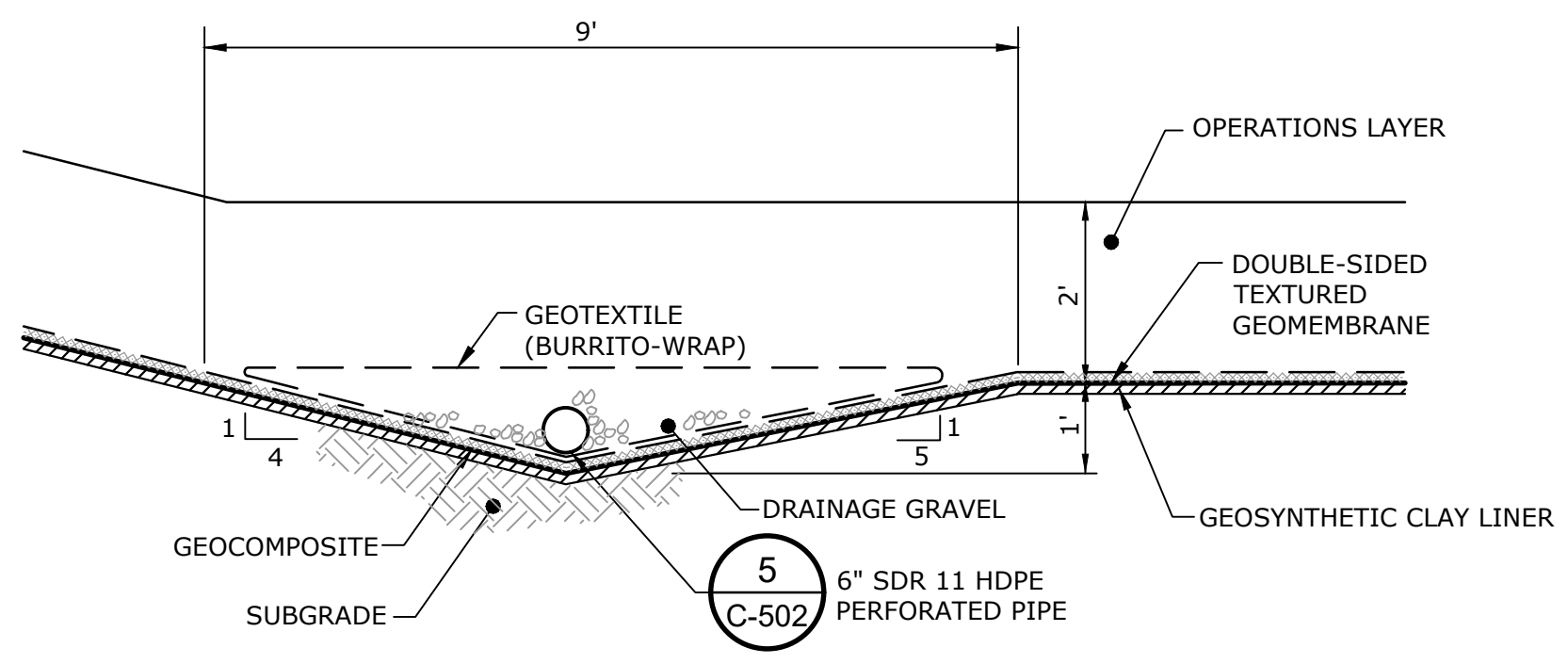
WESTERN REGIONAL LANDFILL		
CELL 5 LINER		
LANDFILL SECTIONS		
DESIGNED BY : MDC	CHECKED BY : CEB	DATE : SEPT. 2022
DRAWN BY : MDC	APPROVED BY : GRB	FILE : 220036-C-301_LF SECTIONS.DWG

SHEET
C-301

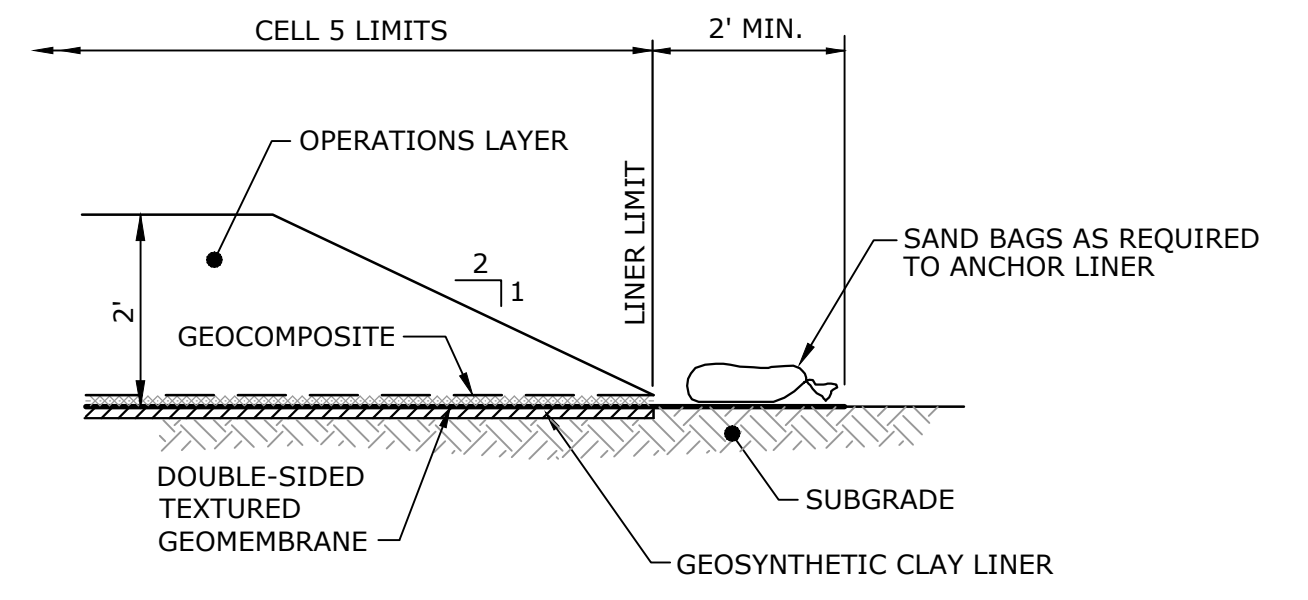
ISSUED FOR CONSTRUCTION



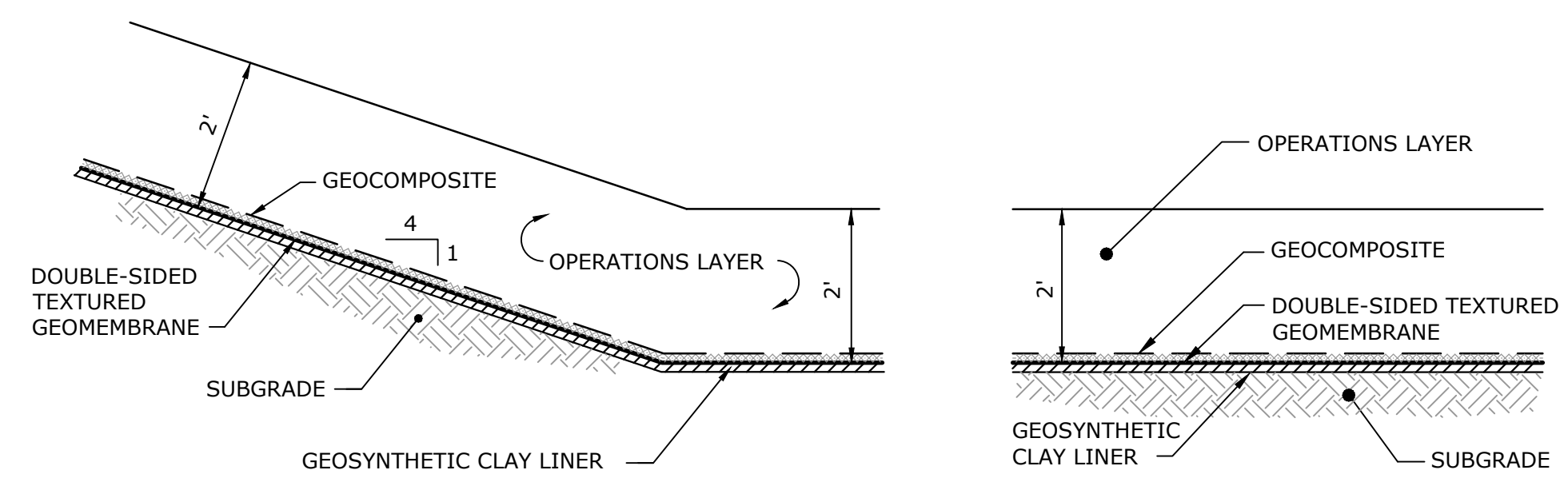
WEST ANCHOR TRENCH
DETAIL 1
SCALE: 1"=2' C-501



LEACHATE COLLECTION PERIMETER PIPE TRENCH
DETAIL 2
SCALE: 1"=2' C-501

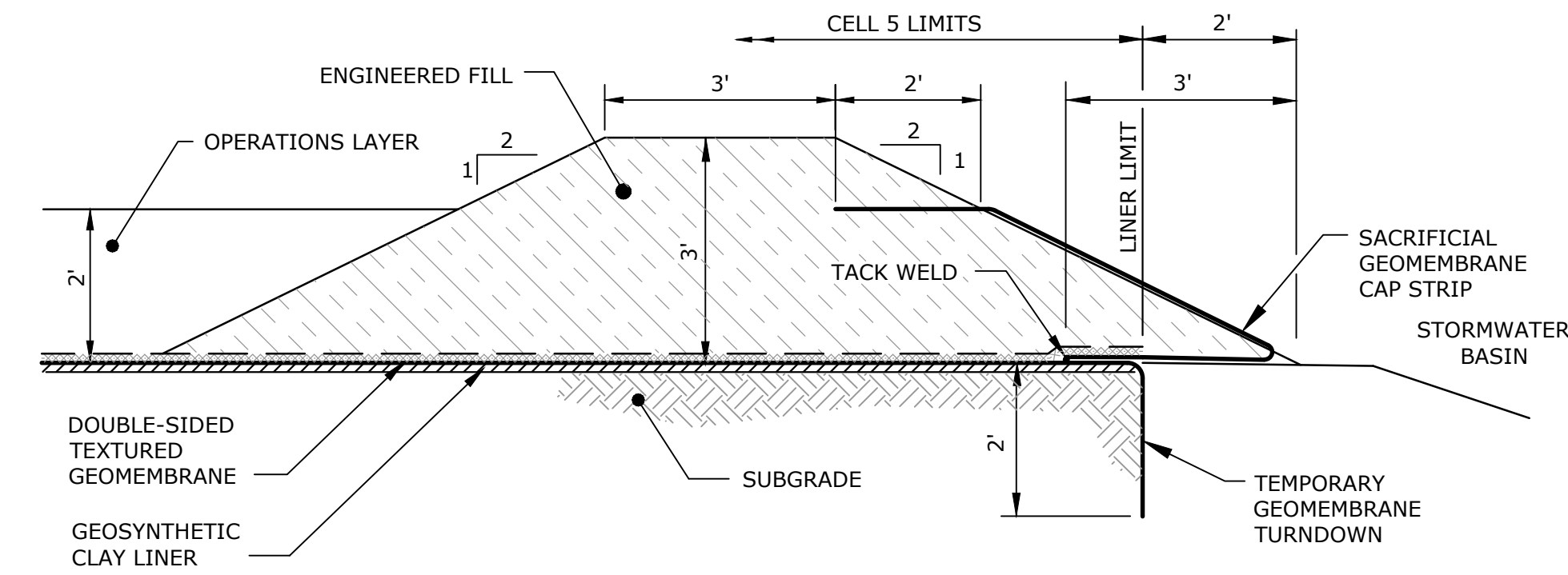


SIDESLOPE LINER TERMINATION
DETAIL 3
SCALE: 1"=2' C-501

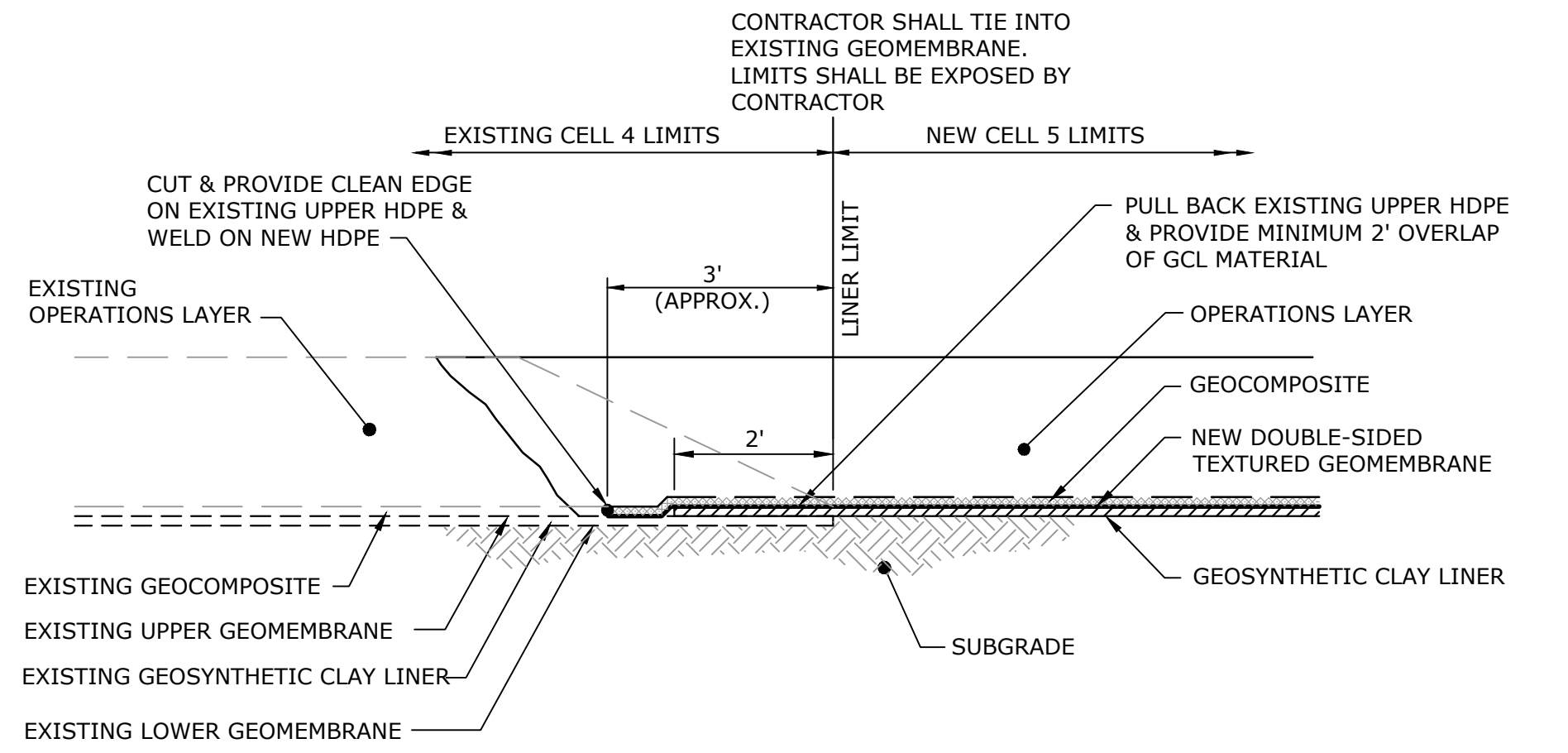


SIDESLOPE LINER SYSTEM
DETAIL 4
SCALE: 1"=2' C-501

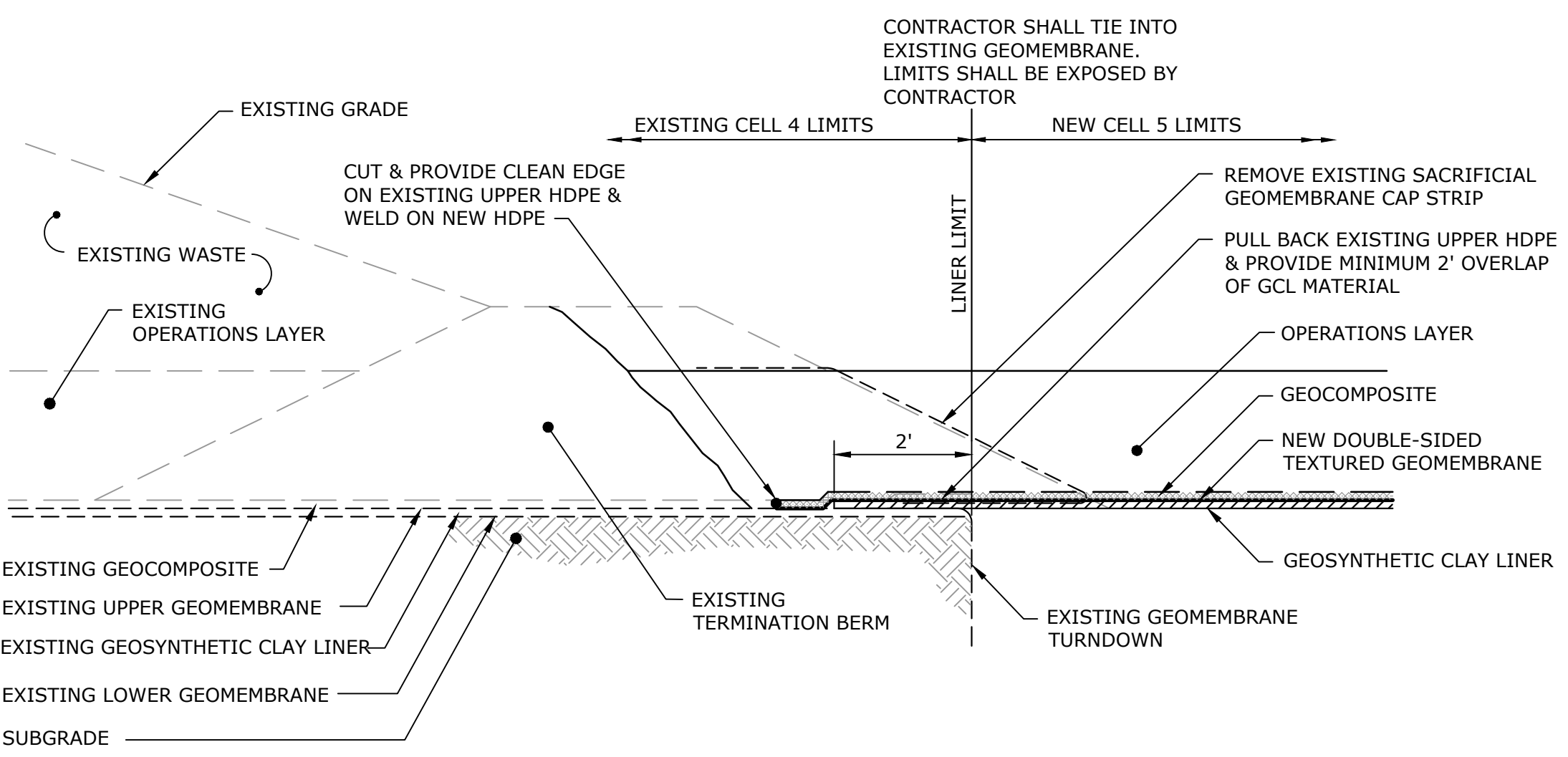
BASE LINER SYSTEM
DETAIL 5
SCALE: 1"=2' C-501



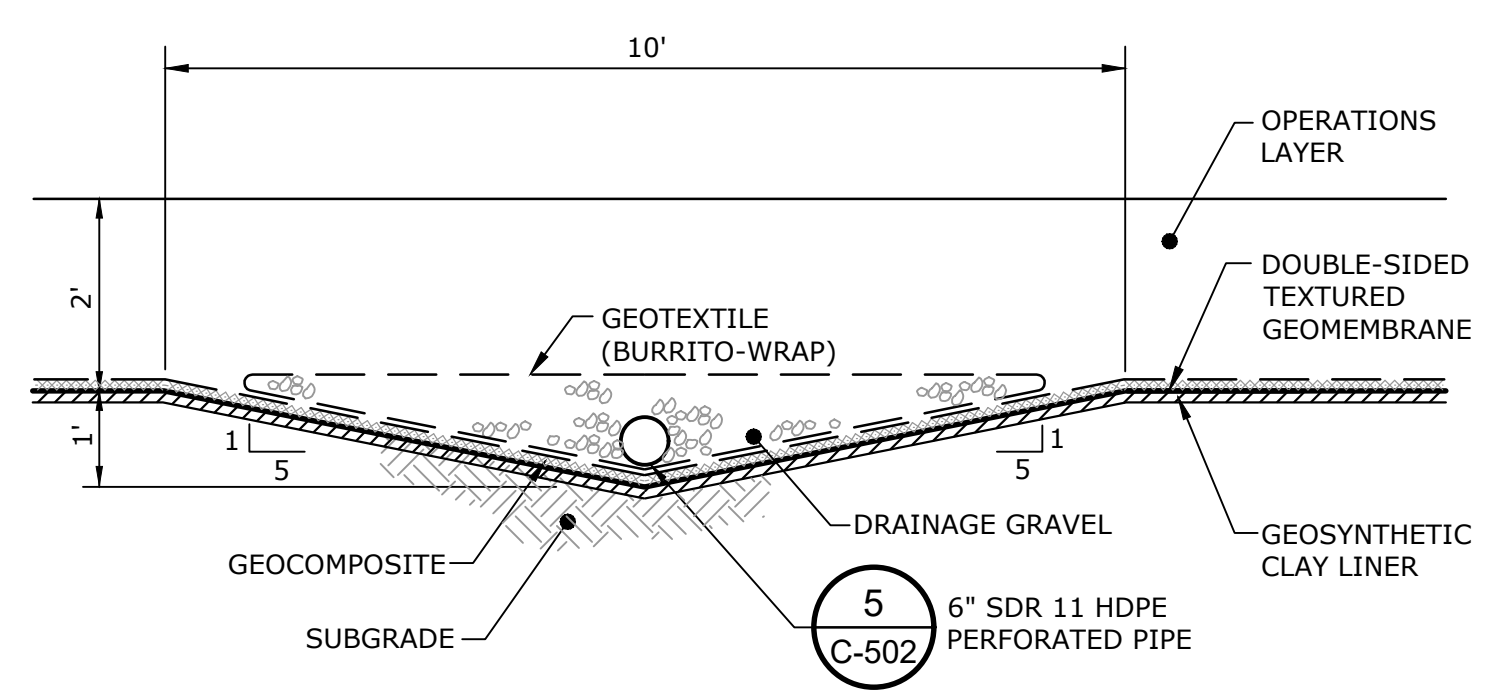
BASE LINER TERMINATION
DETAIL 6
SCALE: 1"=2' C-501



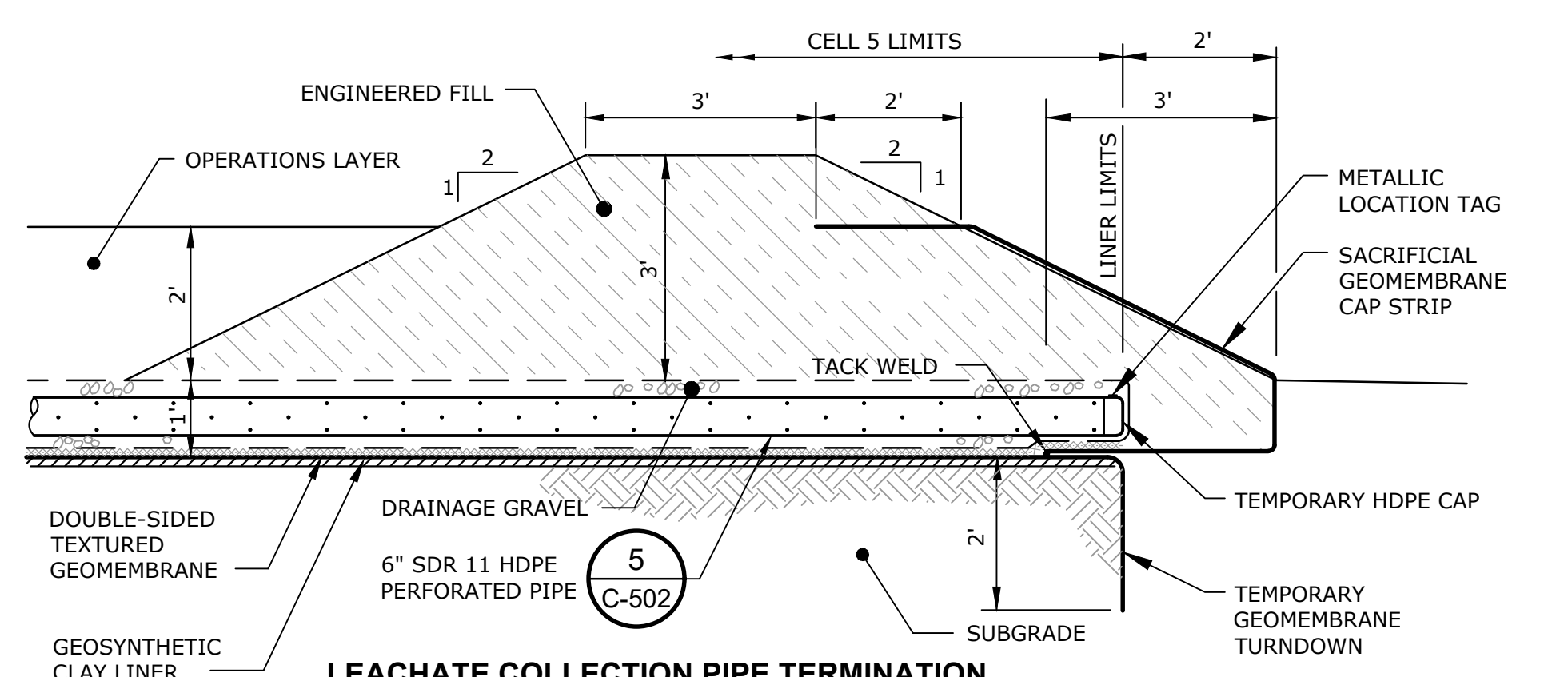
SIDESLOPE LINER CONNECTION
DETAIL 7
SCALE: 1"=2' C-501



BASE LINER CONNECTION
DETAIL 8
SCALE: 1"=2' C-501



LEACHATE COLLECTION PIPE TRENCH
DETAIL 9
SCALE: 1"=2' C-501

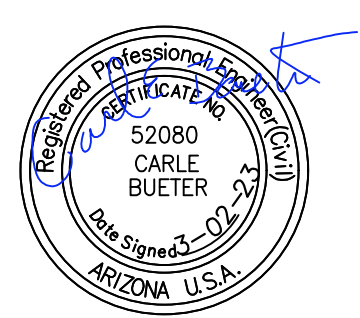


LEACHATE COLLECTION PIPE TERMINATION
DETAIL 10
SCALE: 1"=2' C-501

X:\WESTERN REGIONAL\220036 - CELL 5 LINER - Project Drawings\220036-C-501_LINER DETAILS.DWG 3/22/2023 10:50 AM

REV	REVISION DESCRIPTION	DATE

TETRA TECH
800 East Wetmore Road, Suite 230
Tucson, AZ 85719
TEL 520.618.2400

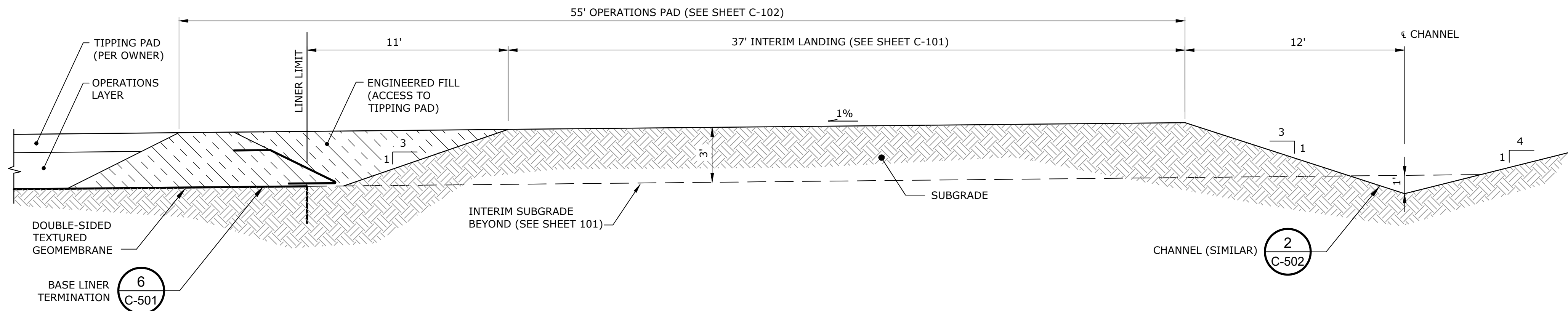


WESTERN REGIONAL LANDFILL
CELL 5 LINER
LINER DETAILS

DESIGNED BY: MDC CHECKED BY: CEB DATE: SEPT. 2022
DRAWN BY: MDC APPROVED BY: GRB FILE: 220036-C-501_LINER DETAILS.DWG

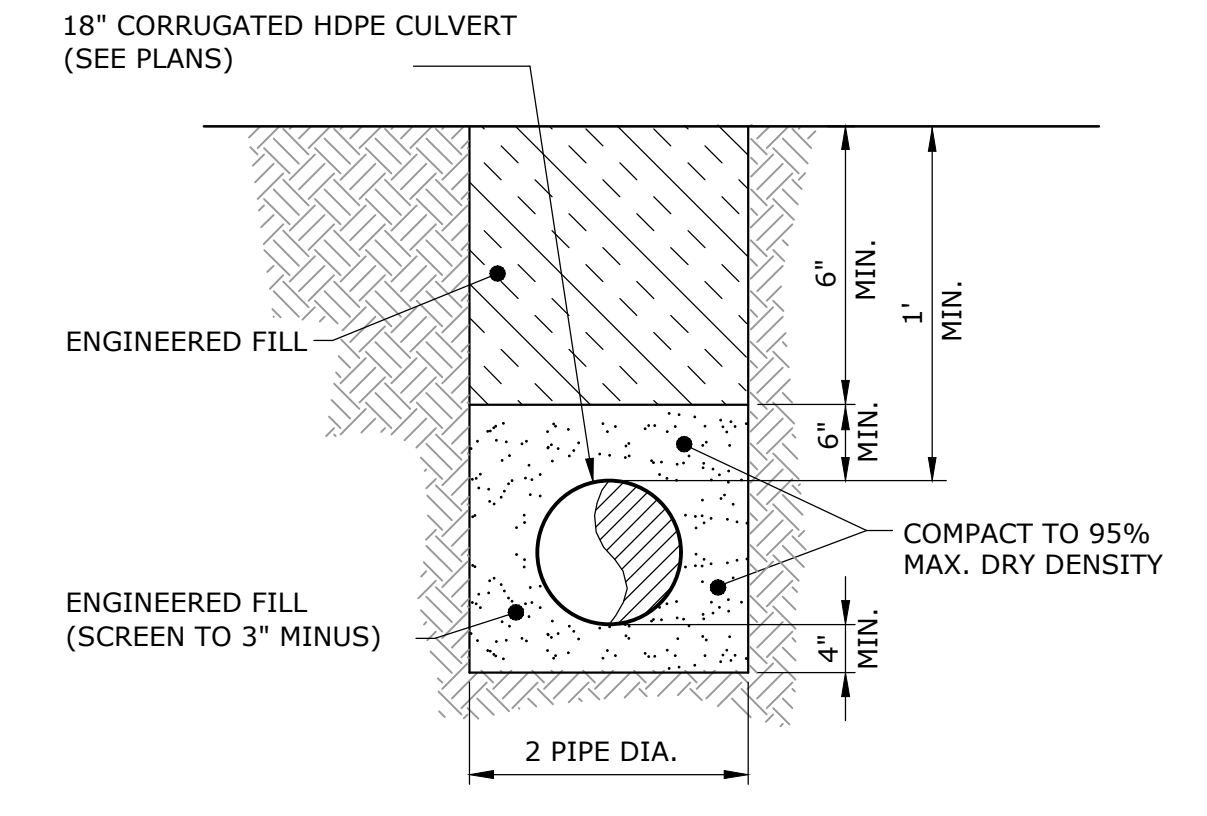
SHEET
C-501

ISSUED FOR CONSTRUCTION



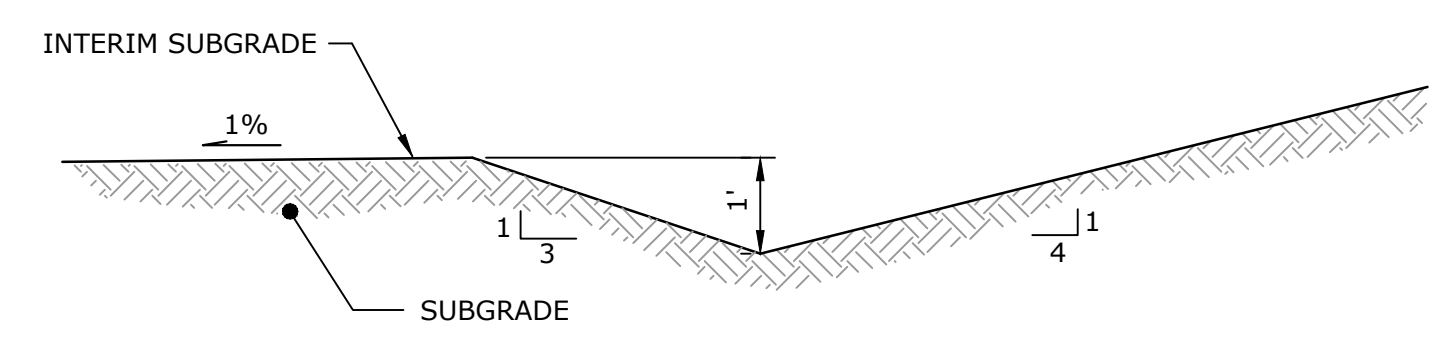
ROAD LANDING / OPERATIONS PAD

SECTION A
SCALE: 1"=4'
C-502

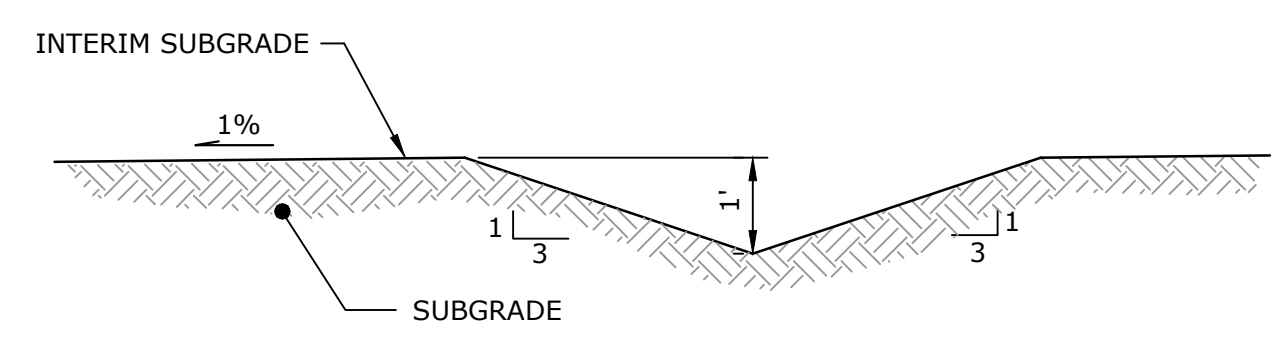


CULVERT TRENCH

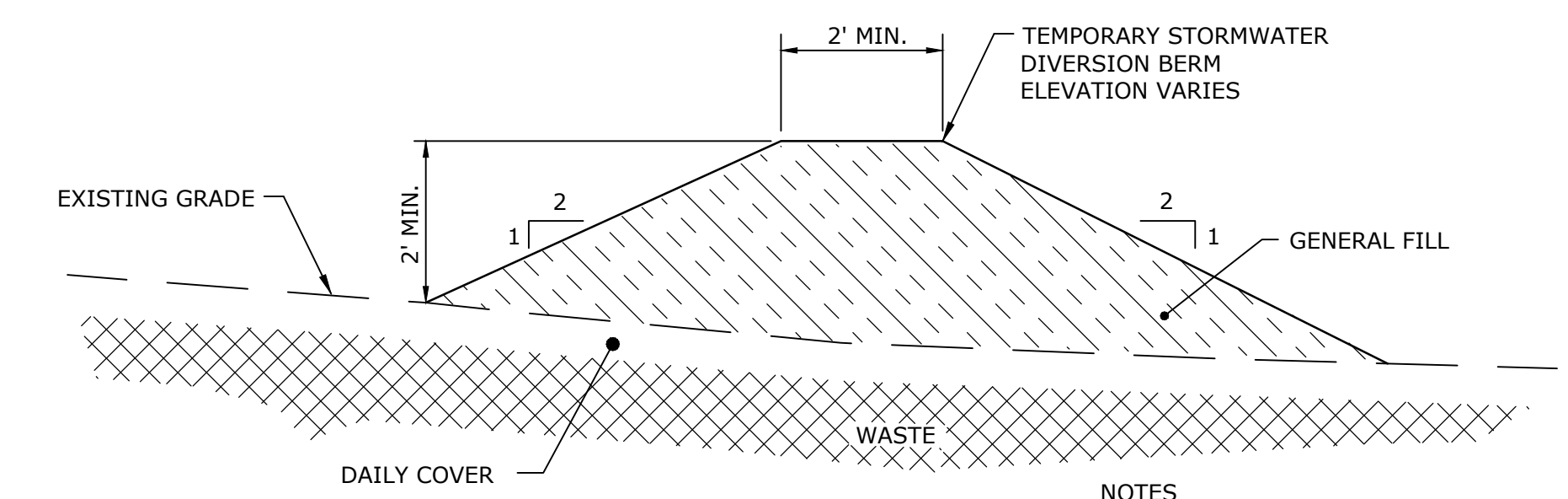
DETAIL 1
SCALE: 1"=2'
C-502



CHANNEL
DETAIL 2
SCALE: 1"=2'
C-502

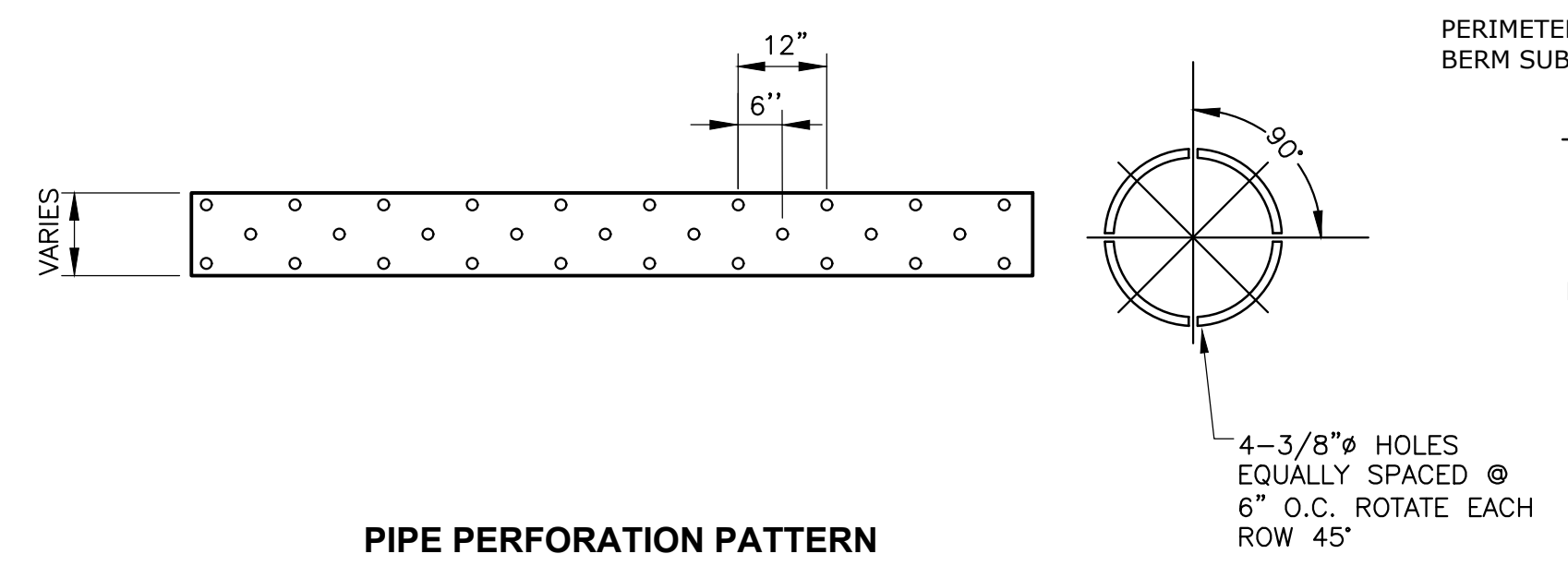


CHANNEL
DETAIL 3
SCALE: 1"=2'
C-502

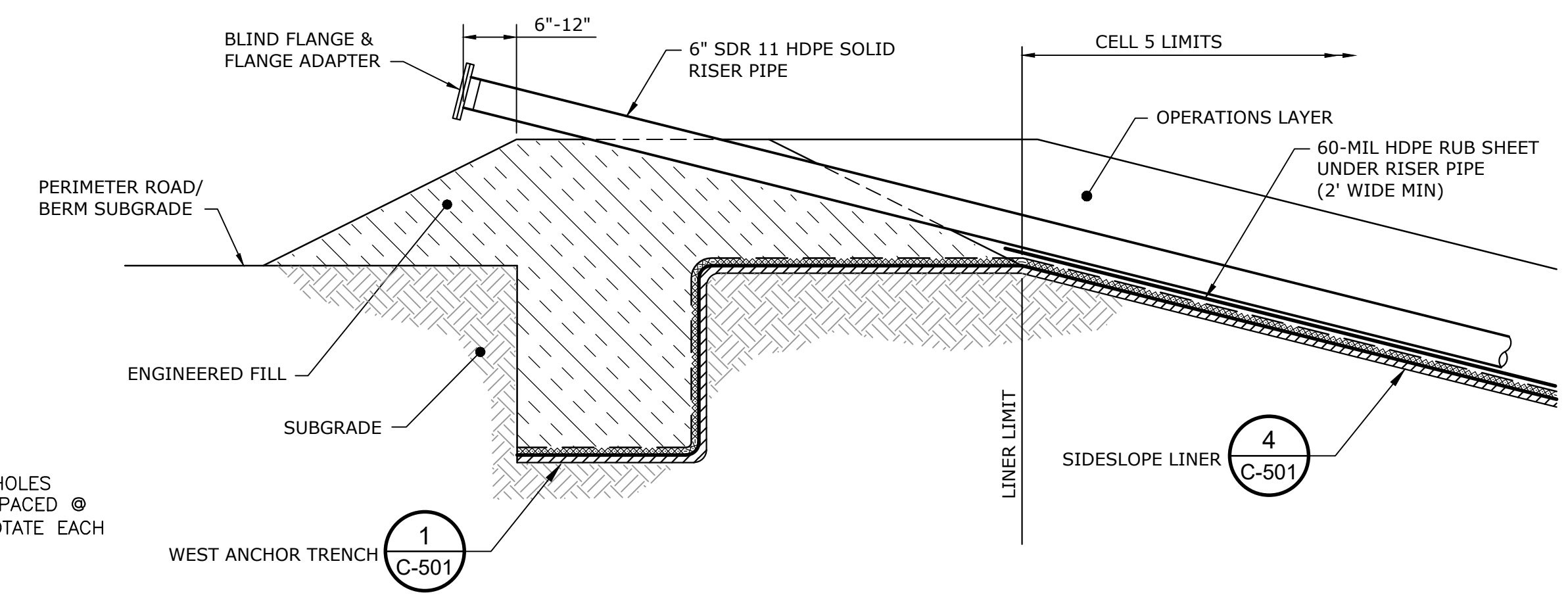


STORMWATER DIVERSION BERM
DETAIL 4
SCALE: 1"=2'
C-502

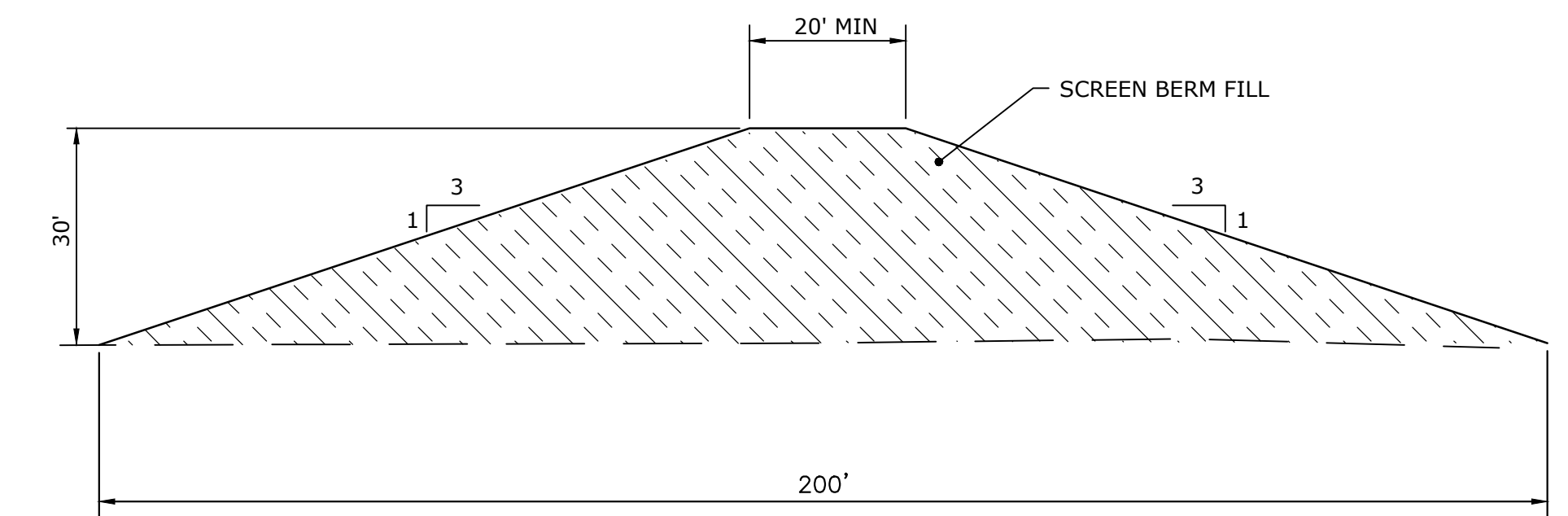
- NOTES**
- CONTRACTOR IS RESPONSIBLE FOR ENSURING THAT ANY POTENTIAL STORMWATER DOES NOT ENTER THE EXCAVATION AREA.
 - BERM IS TO BE BUILT WITH EXCAVATED SOILS AND COMPACTED AS REQUIRED TO MAINTAIN A UNIFORM SURFACE WHEN GRADED.



PIPE PERFORATION PATTERN
DETAIL 5
SCALE: NOT TO SCALE
C-502



LEACHATE RISER PIPE
DETAIL 6
SCALE: 1"=2'
C-502



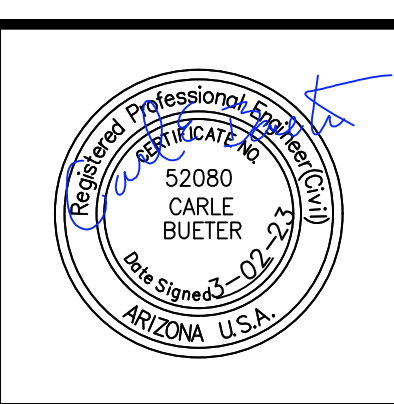
SCREEN BERM
DETAIL 7
SCALE: 1"=2'
C-100

X:\WESTERN REGIONAL\220036 - CELL 5 LINER - Project Drawings\220036-C-502_MISC DETAILS.DWG 3/2/2023 10:50 AM

ISSUED FOR CONSTRUCTION

REV	REVISION DESCRIPTION	DATE

TETRA TECH
800 East Wetmore Road, Suite 230
Tucson, AZ 85719
TEL 520.618.2400



WESTERN REGIONAL LANDFILL
CELL 5 LINER

MISCELLANEOUS DETAILS

DESIGNED BY: MDC CHECKED BY: CEB DATE: SEPT. 2022
DRAWN BY: MDC APPROVED BY: GRB FILE: 220036-C-502_MISC DETAILS.DWG

SHEET
C-502