

Rummel Construction, Inc.

Technical Proposal

24-01-SWD-01 | Western Regional Landfill Cell 5 Earthwork & Liner

7520 E. Adobe Drive | Scottsdale Arizona 85255 | 480.222.9922 | www.rummelconstruction.com
Licenses: AZ# ROC114845 | CA# 979592 | NV# 0069890 | NM# 351651

SUBMITTAL LETTER

June 30, 2023
Cochise County Solid Waste Department
2595 N. Sagebrush Road, Huachuca City, AZ 85616

Attn: Anne Coppola
RE: Western Regional Landfill Cell 5 Earthwork & Liner



Dear Anne and Selection Panel Members,

Rummel Construction, Inc. (Rummel) is very pleased to have the opportunity to respond to your RFQ for the **Western Regional Landfill Cell 5**. Enclosed you will find our comprehensive approach to managing and ensuring a high-quality project is safely delivered to all stakeholders.

Rummel is dedicated to the relationships that we develop with our clients, subcontractors, and within our own team. Rummel as shown in the enclosed relative experience, is known for its landfill construction expertise. This expertise has led Rummel to be chosen to lead multiple landfill CMAR projects with three different government agencies: City of Phoenix (currently 2 GMPs under 1 CMAR), City of Glendale (3 GMPs under 2 CMARs) and City of Flagstaff (2 GMPs under 2 CMARs.) Three of these CMAR projects involved working directly with TetraTech (Cochise County's design engineer.) In addition, Rummel has constructed multiple landfill cells designed by TetraTech and is very familiar with their design components and specifications. Rummel Construction will work hand in hand with TetraTech to complete this project in full compliance with their design and specification.

A CULTURE OF SAFETY: In addition, Rummel's 100% commitment to safety excellence and sending each employee home, safe and healthy every night is top priority on every job in which we operate. Our industry-leading EMOD safety rating of .67 (industry average is 1.0) is a testament to the value we place on the well-being of our employees, those who work with us, and the communities in which we work and live.

RESOURCES: With over 630 employees and 400 pieces of company-owned equipment, we have the financial security and depth of resources to meet the needs of your most difficult and demanding project goals. While staying flexible with changing timelines.

PROJECT MANAGEMENT TEAM: Our extensive experience has led to a clear understanding of the scope of work and the resources needed to exceed expectations on projects similar to this. With every project team we deploy, we aim to establish clear and consistent communication channels to cut down on our response time. Our experienced team consisting of project managers, project engineers, superintendents, field safety personnel, operators and technicians are familiar with the Western Regional Landfill site and are passionate about delivering high caliber results.

Respectfully,

Dodd O'Neill | Vice President
Rummel Construction, Inc.
Dodd@RummelConstruction.com
602.695.0916 (Direct)

TECHNICAL PROPOSAL

WORK PLAN

The following is a brief summary of Rummel Construction's work plan for the Western Regional Landfill Cell 5 Earthwork & Liner. This scope of work fits Rummel Construction's knowledge and expertise very well and the majority of the project will be completed with company owned equipment and company employees.

METHOD OF COORDINATION

Rummel Construction will conduct daily safety meetings along with weekly construction meetings with subcontractors to ensure project schedule is being maintained. In addition, Rummel Construction will submit a 3 week projected timeline every week to include a detailed schedule of current construction activities along with an updated overall project schedule.

METHODS AND ROUTES FOR MOVING AND STOCKPILING MATERIAL

During the earthwork scope of the project, Rummel Construction will be utilizing large Cat scrapers to move material from Cell 5 to the proposed stockpile location. The existing stockpile area will be the footprint of the material excavated from cell 5 with the new material being placed to the intended top deck elevation. The material within this phase will be placed maintaining 2:1 slopes with the newly placed material on the outboard slopes track walked to prevent future erosion issues. Once construction is completed, a post construction topo will be completed on the stockpile. Material that is deemed suitable for the operations material will be stockpiled in a location adjacent to the new cell access ramp. Additional equipment will be utilized to help with dust control and maintain haul roads.

DUST CONTROL

Rummel Construction's preferred method of moisture conditioning and dust control will be through the use of one waterpull. Due to the onsite water availability, a temporary construction pond will be installed to support the water needs for the project. Changes in our dust control methods (if any) will be discussed in advance at a weekly meeting or in general conversations with the overall project team.

PROPOSED EQUIPMENT

Description	Quantity
CAT D6 Dozer	1
CAT 14 Motorgrader	3
CAT 631 Scraper	5
CAT 637 Scraper	4
8,000 Gallon Waterpull	1
Hurricane Pump	1
CAT 950 Wheel Loader	1
Vibratory Steel Drum	1
CAT 623 Scraper	2

CELL EXCAVATION

CLEARING

Approximate clearing limits for the project are as follows; the screen berm and the remaining cell limits to the north are to be cleared prior to any fill or excavation as well as additional area to the north for our laydown area and a temporary stockpile location for operations layer material. This clearing will be performed with either a dozer or motor grader. Any clearing debris will be hauled to the working face with coordination of the site operations team.



TECHNICAL PROPOSAL

EXCAVATION

The mass excavation consists of 491,000 CY. We will utilize 5-631 scrapers along with 4- 637 scrapers and appropriate support to move material to the proposed stockpile area. The haul route to the existing stockpile area will need to be established and will be made wide enough to accommodate travel in both directions in a safe manor. During the initial cell excavation, the operations layer will need to be identified and material hauled to a designated stockpile location. In addition to the cell excavation there is a screen berm fill that will account for 185,000 CY of the material excavated from the cell.

Once the cell excavation is complete, the subgrade preparation will be completed to meet the outlined project specifications utilizing equipment outfitted GPS to meet the grading tolerances of +/- 0.10' required. Ground personnel will also provide support ensuring no oversize material is on the surface of the prepared subgrade. Upon completion, the finished area will be inspected by onsite CQA and surveyed. Information will be submitted for approval on 50x50 grid as per project specifications. Rummel will maintain the finished surface with continuous water and roller support to ensure the prepared subgrade is acceptable through the duration of liner installation.

OPERATIONS LAYER SCREENING

The plan is to selectively excavate onsite native soil material to meet the operations layer material specification of 2" minus in lieu of screening the soil. During the excavation operation the material will need testing to ensure that the gradation requirements are being met per the project specifications.

OPERATIONS MATERIAL PLACEMENT

The 34,000 CY of material will be loaded and hauled from the operations material stockpile down the cell ramp to the location of the tipping pad utilizing Cat 623 scrapers. A 3ft thick section on the tipping pad will be developed to start working the material out across the liner system. We will dump the material and utilize a CAT D6 Dozer and CAT 140 Motor grader with GPS to push the material out maintaining a 2ft thickness. Ground personnel will be out on the liner system to watch for material rollups or wrinkles that may develop as the material is being pushed. Sandbags will be placed on the western slope terminations for future construction. As we progress

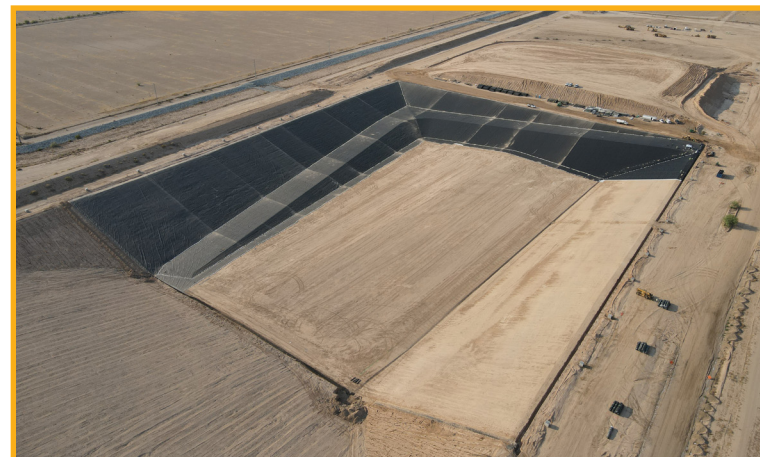
out further across cell floor 3ft thick traveling fingers will be established for the scrapers to run on. The specified thickness of the fingers and tipping pad will allow the proposed equipment to meet the ground pressure requirements in the specifications. Once the operation layer is graded and meets the grading tolerance, the cell will be as built and the information provided for approval on a grading exhibit of a 50x50 grid.

LEACHATE COLLECTION SYSTEM

The LCRS system will consist of 6" of HDPE solid pipe along with 6" perforated pipe that will be fused and installed to complete the collection system. All of the fusing will be completed by trained and certified fusion technicians. The collection trenches will be built to plan with drainage gravel, geotextile fabric and 6" perforated HDPE pipe.

SURVEY

Prior to the start of excavation, we will schedule our surveyor to conduct a preconstruction topo and place survey stakes giving us the clearing limits in addition to design elevations. Survey will also be scheduled to perform as-built surveys as required for each phase of construction. During the excavation phase of construction our surveyor will conduct an interim topo to verify job to date quantities and progress. In addition, we have grade checkers with onsite GPS equipment with capabilities to assist with daily construction staking.



TECHNICAL PROPOSAL

DEWATERING METHODS

In an event where dewatering is necessary Rummel Construction would notify the Cochise County immediately of the issue and propose a dewatering plan to remedy the situation.

SCHEDULE

Rummel Construction understands the County desires to have Cell 5 completed by November or early December. As indicated by our enclosed preliminary schedule, we anticipate substantial completion by mid-November. We will utilize Saturdays as catch-up days if needed to ensure meeting the County's need.

PROJECT SUPERVISION

Rummel Construction will have an experienced team on site daily. A project engineer and superintendent will be on site to supervise day to day activities and to ensure project schedule is being met. A project manager and sector manager will also be available to assist with expertise and guidance throughout the duration of the project. In addition to supervision, Rummel Construction also has dedicated safety personnel that performs regular safety audits on site to ensure a safe and healthy working environment. Any of the project team can be reached at the following.

Sector Manager: George Cabral	(602) 499-2182
Project Manager: Thomas Callen	(480) 364-9792
Gen. Superintendent: Barry Larson	(602) 695-1893
Area Superintendent: Mike Dudek	(602) 695-5532
Site Superintendent: Joe Gattas	(602) 695-2879
Project Engineer: Hasan Alshuwaili	(602) 695-9372
Safety Director: Matt Crosby	(602) 695-4021

HEALTH AND SAFETY

Rummel Construction abides by "Rummel Construction 2023 Health and Safety Manual" while performing any construction activities. A site specific Health & Safety Plan will be developed and shared with Cochise County prior to start of construction.

EMERGENCY ACTION PLAN

Rummel Construction creates a job specific emergency action plan that includes emergency contact information, nearest hospital and any necessary info to effectively work through an emergency. In addition, Rummel Construction reviews the EAP daily with onsite personnel to ensure everyone is prepared in case of an emergency.

MAINTAINING AS-BUILT INFORMATION

Rummel Construction will carry a full sized (24x36in) set of plans on site to record any red line changes. Overall changes will also be documented in the final survey as-builts.

SPILL PREVENTION CONTROL (SPCC) PLAN

Rummel Construction abides by "Rummel Construction 2023 Health and Safety Manual" while performing any construction activities. Within the 2023 Health and Safety Manual we outline our spill prevention and response plan with detailed information on how to combat any spills that might occur.

SUBCONTRACTOR LIST

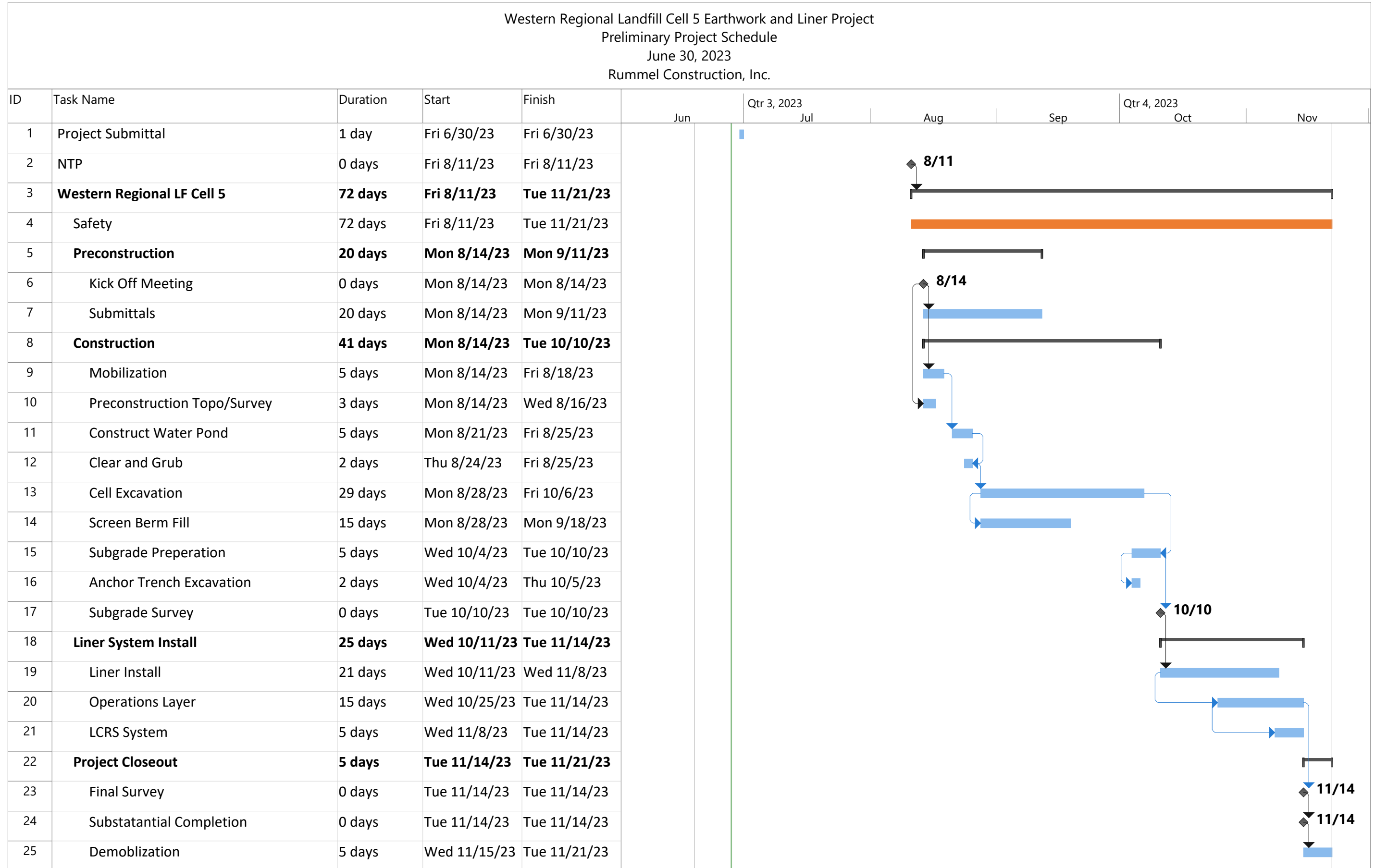
Per our subcontractor Listing provided with the bid, we are proposing to utilize the following subcontractors:

1. **S3 Southwest Survey Solutions**
2. **Patriot Lining**



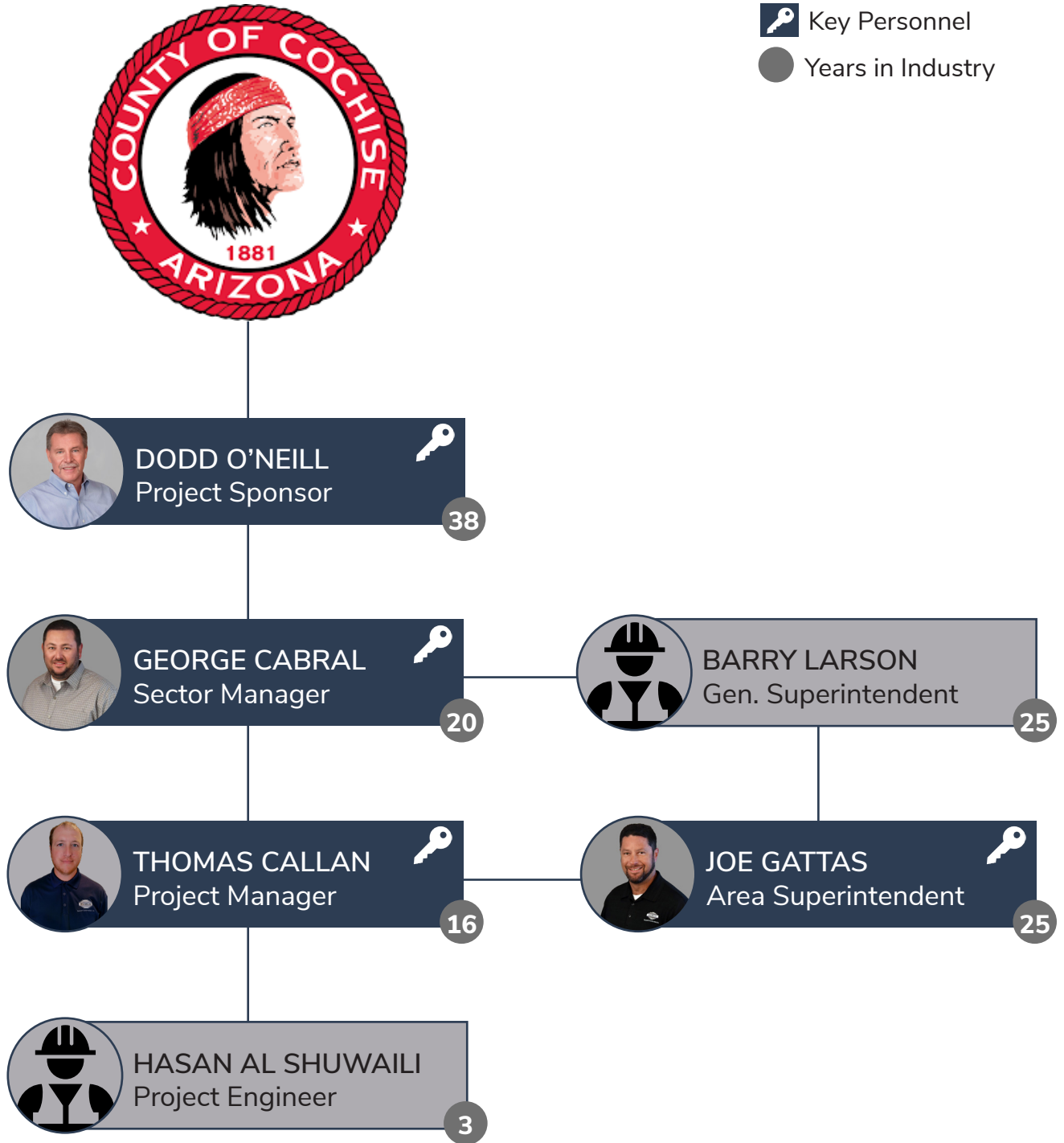
TECHNICAL PROPOSAL

SCHEDULE



TECHNICAL PROPOSAL

ORGANIZATION CHART



TECHNICAL PROPOSAL

PROJECT TEAM



DODD O'NEILL | PROJECT SPONSOR

17 Years with Rummel
38 Years in the Industry

Role Description: As Project sponsor, Dodd will provide senior leadership and mentorship to the team. With over 35 years of experience and with Rummel for the past 17 years, he has one of the most impressive records in the industry. His title of Vice President leaves him responsible for the mining, landfill, and heavy infrastructure sectors. Dodd is a hands-on leader with resilient attentiveness and enjoys having his boots on the ground to personally ensure every task is completed. He offers his team guidance and ample resources to produce successful results.



GEORGE CABRAL | SECTOR MANAGER

5 Years with Rummel
20 Years in the Industry

Role Description: As Sector Manager Georger is a seasoned professional in the construction industry with 20 years of experience. George has excelled in various roles, including Sector Manager, Project Manager, Superintendent, and Area Superintendent. His extensive background equips him with a diverse skill set that he can leverage across projects of varying scopes. As a detail-oriented Sector Manager, George adeptly manages multiple project activities simultaneously. His management approach fosters clear communication and empowers team members to understand project goals and the steps required to achieve them.



THOMAS CALLAN | PROJECT MANAGER

2 Years with Rummel
16 Years in the Industry

Role Description: As project manager Thomas will assume a key leadership role in overseeing and managing construction from inception to completion. This role involves coordinating various aspects of the project, including planning, scheduling, budgeting, resource allocation, and ensuring the successful delivery of project on time, within budget, and to the required quality standards. Thomas will be responsible for managing project teams, liaising with stakeholders, and maintaining effective communication throughout the project lifecycle.



JOE GATTAS | AREA SUPERINTENDENT

20 Years with Rummel
25 Years in the Industry

Role Description: As Superintendent Joe will hold a critical role in overseeing field operations and maintaining control over the day-to-day activities of labor and equipment resources. Joe's primary focus will be on ensuring the continuous achievement of safety, quality, and production goals throughout the project lifecycle. With a wealth of field experience, Joe possesses a strong aptitude for managing both internal and external resources, including trade subcontractors, vendors, suppliers, and professional consultants. This position demands exceptional leadership skills, meticulous attention to detail, and a steadfast commitment to delivering successful outcomes all of which Joe can deliver.

TECHNICAL PROPOSAL

PAST PERFORMANCE & REFERENCE LISTING

PROFILED PROJECT #1 | WESTERN REGIONAL LANDFILL CELL 4



DESCRIPTION:

Rummel Construction was awarded this project by Cochise County on March 16th, 2017. The contract time was very aggressive with the requirement to be completed within 90 calendar days. Rummel Construction achieved substantial completion within the 90 calendar days. The major items of work for Cell 4 consisted of 477,149 CY of cell excavation, 9.5 acres of a composite liner system (GCL, geomembrane and geocomposite), supply and install the leachate collection drain system and process and place 30,560 CY's of operations layer.

REFERENCE:

Garth Bowers, P.E.

Senior Operations Director
Tetra Tech Technical Director

Garth.Bowers@tetrattech.com
520.526.7269

PROFILED PROJECT #2 | SR85 LANDFILL PH 1



DESCRIPTION:

Rummel recently completed the newest cell expansion project at the City of Phoenix's SR85 Landfill; this project was procured using the hard-bid delivery method and Rummel's bid was within 5% of the engineer's estimate and 30% below the next lowest bidder. The project consisted of the complete construction of Cell 1 Phase 5, including 826,000 CY of cell excavation, fine grading, HDPE liner, geocomposite, leachate collection system and associated drainage controls. The composite liner system covered 18.7 acres and included the purchase and installation of all materials. 80,000 CY of operations material was placed over the installed liner system. This project had an aggressive 90 calendar-day schedule and an 8% SBE utilization goal, which were both successfully met.

REFERENCE:

W. Doug Sawyer, P.E.

Engineering Supervisor Disposal
and Diversion Division Public
Works Department

doug.sawyer@phoenix.gov
602.534.1157

TECHNICAL PROPOSAL

PROFILED PROJECT #3 | LOS REALES LANDFILL CELL 4B



DESCRIPTION:

The scope of work for this project involves a substantial excavation effort of approximately 437,000 CY of material. The excavation consisted 2:1 slopes with mid benches, providing stability and safety during construction. Rummel was the only contractor to bid the scope. Additionally, the project includes the preparation of 114,000 SY of liner subgrade, the liner system composed of GCL, Geomembrane, drainage layer and operations layer, the installation of a leachate collection system with forcemain, the implementation of a new onsite water pump, holding system, and the construction of a lined pond.

REFERENCE:

Michael Bradford, P.E.

SCS Engineers

mbradford@scsengineers.com
623.930.4722

PROFILED PROJECT #4 | GLENDALE LANDFILL NORTH CELL PHASE 1 LINER CMAR



DESCRIPTION:

Rummel Construction was selected as the CMAR contractor to complete the fine grading and liner system for the cell excavation we had previously completed under a separate hard-bid contract. The major items of work included 76,000 CY's of cell excavation, 28 acres of subgrade preparation, supply and install a 28 acre composite liner system (GCL and 60 Mil Liner), 16,000 CY's of LCRS Drainage layer and 47,000 CY's of operation layer. The project was started in December 2021 and achieved substantial completion in June of 2022.

REFERENCE:

Ernie Ruiz

Landfill Superintendent
City of Glendale

Ruiz@glendaleaz.com
623.930.4722

TECHNICAL PROPOSAL

LANDFILL EXPERIENCE 5-10 YEARS

PROJECT NAME	OWNER	NUMBER	COMPLETION DATE	CONTRACT AMOUNT
SR85 Landfill CMAR GMP 1	City of Phoenix	(602) 495-6996	07/2023	\$5,170,759
Glendale Landfill Basin Excavations	City of Glendale	(623) 930-2608	05/2023	\$319,910
Southwest Regional Landfill Operations Layer Placement	Republic Services	(602) 241-8417	05/2023	\$152,790
Copper Mountain Landfill Cell 10	Republic Services	(602) 241-8417	05/2023	\$966,000
Glendale Landfill CMAR Ph 2	City of Glendale	(623) 930-2608	04/2023	\$3,656,536
Butterfield Station Landfill Cell 15B	Waste Management of Arizona	(602) 763-4385	04/2023	\$2,509,084
Marana Regional Landfill Cell 4B	Waste Management of Arizona	(602) 763-4385	03/2023	\$3,769,275
Northwest Regional Landfill Ph 2 Mod 7 Common Site	Waste Management of Arizona	(602) 763-4385	12/2021	\$2,678,801
Copper Mountain Landfill 3A & 3C Leachate Ponds	Republic Services	(602) 241-8417	11/2021	\$968,936
Rainbow Valley Landfill	Weinberger Waste Disposal	(602) 757-5167	11/2021	\$522,989
Northwest Regional Landfill Ph 2 Mod 7	Waste Management of Arizona	(602) 763-4385	10/2021	\$110,036
City of Glendale Landfill North Cell Liner Phase 1 (CMAR)	City of Glendale	(623) 930-2608	10/2021	\$7,000,389
SR85 Landfill Erosion Control	Geo Logic Associates	(480) 634-6150	10/2021	\$29,103
Cinder Lake Landfill Sequence D CMAR	City of Flagstaff	(928) 213-2277	09/2021	\$791,962
SR85 Cell 1 Ph 5 Expansion	City of Phoenix	(602) 495-6996	07/2021	\$3,701,569
Cocopah Landfill Capping	Republic Services	(602) 241-8417	06/2021	\$6,508,878
Mohave Valley Landfill Cell 12	Republic Services	(602) 241-8417	12/2020	\$1,127,548
Glendale Landfill Northwest Channel	City of Glendale	(623) 930-2608	12/2020	\$260,053
Northwest Regional Landfill Ph 2 Mod 6 Common Site	Waste Management of Arizona	(602) 763-4385	11/2020	\$2,911,961
Painted Desert Landfill Cell 3 Excavation	Waste Management of Arizona	(602) 763-4385	08/2020	\$389,451
Northwest Regional Landfill	Waste Management of Arizona	(602) 763-4385	07/2020	\$745,926
Glendale Landfill North Expansion	City of Glendale	(623) 930-2608	06/2020	\$5,057,221
Casa Grande Landfill Cover Soil	City of Casa Grande	(520) 421-8600	03/2020	\$259,375
Imperial Landfill Phase VI Segment C-2	Imperial Landfill, Inc.	(602) 241-8417	01/2020	\$863,558
Copper Mountain Landfill VIII	Republic Services	(602) 241-8417	06/2019	\$1,094,738
Northwest Regional Landfill Phase 2 Mod 5	Waste Management of Arizona	(602) 763-4385	05/2019	\$810,051
Durham Regional Landfill Cell 4	RAD Landfill	(480) 983-9100	12/2018	\$1,155,356
Imperial Landfill Phase VI C-1	Imperial Landfill, Inc.	(602) 241-8417	12/2018	\$734,994
Skunk Creek Landfill Settlement Fills	Tetra Tech BAS, Inc.	(909) 860-7777	12/2018	\$136,435
Buckhead Mesa Landfill	Intermountain West Civil Constructors, Inc.	(602) 888-0169	08/2018	\$199,837
Painted Desert Landfill Cell 2B	Waste Management of Arizona	(602) 763-4385	07/2018	\$841,134
JOA - Glendale LF West Cell Gas Mods / Storm Water Control	City of Glendale	(623) 930-2608	05/2018	\$213,350
Marana Regional Landfill Module 1C Liner & Phase III Improvement Plan Drainage	Waste Management of Arizona	(602) 763-4385	04/2018	\$1,010,290
Marana Landfill Cell 1C - Access Rd/Landscaping	Waste Management of Arizona	(602) 763-4385	04/2018	\$84,515
Marana Landfill Cell 1C - Liner	Waste Management of Arizona	(602) 763-4385	04/2018	\$298,162
Marana Landfill Cell 1C - Storm Water	Waste Management of Arizona	(602) 763-4385	04/2018	\$585,517
Mohave Valley Landfill	Republic Services	(602) 241-8417	11/2017	\$185,078
Southwest Regional LF Access Rd	Allied WasteTransportation, Inc.	(602) 241-8417	10/2017	\$39,344
Western Regional Landfill Cell 4	Cochise County	(520) 432-9200	08/2017	\$1,834,530
La Paz County Landfill Cell 5B	Republic Services	(602) 241-8417	05/2017	\$914,459
La Paz County Regional Landfill Access Ramp Widening	Republic Services	(602) 241-8417	04/2017	\$12,272
La Paz County Regional Landfill Septic Pond & GCL Transport	Republic Services	(602) 241-8417	04/2017	\$63,997