

## **RESOLUTION G-23-01**

### **A RESOLUTION OF THE BOARD OF DIRECTORS OF THE GOLDEN ACRES STREET LIGHT IMPROVEMENT DISTRICT TO SUMMARILY DELETE FROM THE DISTRICT CERTAIN PARCELS ANNEXED BY THE CITY OF SIERRA VISTA AND RECONSTITUTE THE DISTRICT FROM THE BALANCE OF THE ORIGINAL GOLDEN ACRES STREET LIGHT IMPROVEMENT DISTRICT**

**WHEREAS**, on October 27, 1986, the Board of Supervisors of Cochise County adopted Resolution 86-66, ordering the formation of the Golden Acres Street Light Improvement District (the “District”) and defining the District’s boundaries; and

**WHEREAS**, on September 8, 2022, the Mayor and City Council of the City of Sierra Vista, Arizona (the “City”), approved Ordinance No. 2022-004, annexing certain parcels located within the District; and

**WHEREAS**, pursuant to A.R.S. § 48-960(G), on January 23, 2023, the City notified the District Board of Directors of its willingness to continue the lighting of streets in the Golden Acres Drive right-of-way serving the parcels annexed by the City; and

**WHEREAS**, pursuant to A.R.S. § 48-960(G), the Board of Directors wishes to summarily delete from the District the area so annexed and reconstitute the District from the balance of the original District for street lighting;

**NOW, THEREFORE, BE IT RESOLVED BY THE BOARD OF DIRECTORS OF THE GOLDEN ACRES STREET LIGHT IMPROVEMENT DISTRICT** as follows:

1. That those parcels identified by the following Assessor’s Parcel Numbers (APN) are summarily deleted from the Golden Acres Street Light Improvement District: 10756002F, 10756002L, 10756002N, 10756002Q, 10756002S, 10756002Y, 10756006, 10756477, and, 10756477B.
2. That the Golden Acres Street Light Improvement District is hereby reconstituted, as described in Exhibit A to this Resolution, from the balance of the original Golden Acres Street Light Improvement District.

**DATED** this 28th day of February, 2023.

---

Ann English, Chair

**ATTEST:**

---

Tim Mattix  
Clerk of the Board

**APPROVED AS TO FORM:**

*Kris Carlson*  
[Kris Carlson \(Feb 15, 2023 09:47 MST\)](#)  
Kris Carlson  
Civil Deputy County Attorney

**AMENDED GOLDEN ACRES  
STREET LIGHT IMPROVEMENT DISTRICT**

2-10-23

- PARCEL I      GOLDEN ACRES MOBILE HOME PARK, UNIT 1, COCHISE COUNTY, ARIZONA, AS SHOWN BY MAP ON FILE IN BOOK 7 OF MAPS AND PLATS AT PAGE 15, COCHISE COUNTY RECORDS.
- PARCEL II     GOLDEN ACRES MOBILE HOME PARK, UNIT 2, COCHISE COUNTY, ARIZONA, AS SHOWN BY MAP ON FILE IN BOOK 9 OF MAPS AND PLATS AT PAGE 22, COCHISE COUNTY RECORDS.
- PARCEL III    A PORTION OF THE SOUTH HALF OF SECTION 19, TOWNSHIP 22 SOUTH, RANGE 21 EAST OF THE GILA AND SALT RIVER MERIDIAN, COCHISE COUNTY, ARIZONA, DESCRIBED AS FOLLOWS:

BEGINNING AT THE CENTER-SOUTH 1/16<sup>TH</sup> CORNER OF SECTION 19, SAID POINT REFERENCED IN RECORD OF SURVEY BOOK 55 PAGE 81 AS AN ALUMINUM CAPPED SURVEY MONUMENT STAMPED R.L.S. 13189, TO WHICH THE SOUTH QUARTER CORNER BEARS S00°03'50"E 1322.62'; THENCE N89°49'06"W 871.99'; THENCE NORTH 00°01'57"E 586.95' TO A POINT ON THE SOUTH RIGHT OF WAY LINE OF GOLDEN ACRES DRIVE; THENCE S89°50'31"E 871.06'; THENCE CONTINUING EASTERLY ALONG THE SOUTHERLY RIGHT OF WAY LINE OF GOLDEN ACRES DRIVE TO THE WESTERLY BOUNDARY LINE OF GOLDEN ACRES MOBILE HOME PARK UNIT 1 SAID POINT BEING 16' WESTERLY OF THE NORTHWEST CORNER OF LOT 1; THENCE S18°44'33"W 72.17" THENCE S38°14'47"W 100.89'; THENCE S70°17'09"W 124.02'; THENCE S62°06'10"W 194.44'; THENCE S55°23'57"W 194.32'; THENCE S45°08'53"W 276.69'; THENCE S33°41'24"W 60.47' TO THE WEST LINE OF THE SOUTHEAST QUARTER; THENCE NORTHERLY TO THE CENTER-SOUTH 1/16<sup>TH</sup> CORNER AND THE POINT OF BEGINNING.

ORIGINAL LEGAL DESCRIPTION FOR GOLDEN ACRES STREET LIGHT IMPROVEMENT DISTRICT PER #861023685 AS AMENDED PER CITY OF SIERRA VISTA ANNEXATIONS IN ORDINANCE #2005-012, ORDINANCE #2006-007, & ORDINANCE #2022-004.

SEC. 19

TN. 22

RG. 21

BOOK 107

MAP 56

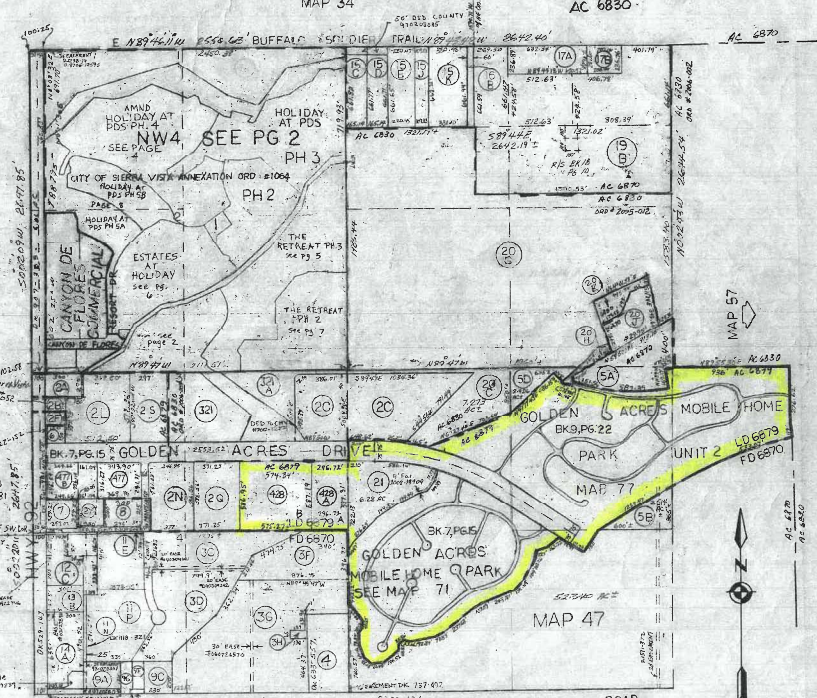
Key Map 47

FD 6870

LD 6879

AC 6830

MAP 34

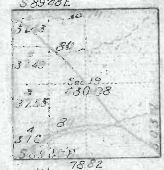


RES# 06-66  
Golden Acres  
Street Light  
Improvement District  
DK B610-23666

R/S:  
K/S A-B  
Bk 55 Pg 81

155' N of 30' W  
0' 00' 20"

NOTES  
1. POR. OF SECTION SURVEY BK 1, PS. 9-12



SCALE 1" = 600'

COCHISE COUNTY ASSESSOR  
THIS MAP CREATED AS A WORKING RECORD  
AND DOES NOT CONSTITUTE A SURVEY  
THIS DESCRIPTION IS MADE  
FOR RECORDING PURPOSES AND  
DOES NOT CONSTITUTE A SURVEY

COUNTY ASSESSOR'S MAP