



# Agency Comment Summary

## **Engineering and Natural Resources:**

No comments provided

## **Environmental Health Services:**

Must maintain 10 feet from leach lines and septic tanks

## **Floodplain:**

1. The proposed development will increase the impervious factors of the existing onsite drainage areas. The post-development drainage analysis will need to be evaluated to ensure that the retention basin will be able to accommodate the increased flows. Please provide.
2. Also, the proposed development will need to justify that it will not cause adverse effects to the state highway, adjacent properties, property boundaries, and to the property itself. This will include not increasing the 100-year WSEL by more than 0.1 foot or the flow velocities by more than 15%. Please provide.
3. A Floodplain Use Permit (FPUP) and Elevation Certificate (EC) will be required for each building.
4. The floodzone must be called out in a surveyable manner on the Grading and Drainage Plans. Please provide.
5. The engineer is aware that additional comments may be forthcoming.

## **Game and Fish:**

See attached.

## **SSVEC:**

No special conditions

## **ADOT:**

No comments provided



---

October 21, 2022

Mr. Robert Kirschmann  
Cochise County  
126 West 5th Street, Suite 4  
Benson, Arizona 85602

Electronically submitted to [RKirschmann@cochise.az.gov](mailto:RKirschmann@cochise.az.gov)

Re: Review of the SU22-21 (Slope Along) project

Dear Mr. Kirschmann:

The Arizona Game and Fish Department (Department) reviewed your Project Evaluation Request dated October 6, 2022, regarding the Special Use Authorization to approve three short term rentals just south of 998 North Slope Along Way in Cochise, Arizona. The rentals will include one 320 square-foot cargo container and two canvas tents measuring 645 and 290 square feet.

Based on the information provided, the Department offers the following general recommendations to minimize project effects to wildlife:

- The Department's Online Environmental Tool report (HGIS-17619, attached) created on October 21, 2022, indicates that several Arizona Species of Greatest Conservation Need have the potential to occur within the project area. If wildlife are encountered while working in the project area, the Department recommends moving them outside of the construction area, no more than 100 feet outside the project boundary in similar habitat.
- If vegetation trimming or removal will occur, the Department recommends that construction activities occur outside of the breeding season as the trees and/or vegetation within the project area may provide nesting opportunities for avian species that are regulated under the Migratory Bird Treaty Act (MBTA) and protected under state law. Breeding season in this area is generally mid-February through September for most species and is January through June for raptors. If it is anticipated the project will not be in compliance with MBTA, the Department recommends contacting the [U.S. Fish and Wildlife Service](#)<sup>1</sup> (USFWS) for technical assistance and options to comply with the MBTA.
- Artificial lighting could impair the ability of nocturnal animals to navigate (e.g., owls, migratory birds, bats, and other nocturnal mammals) and may affect wildlife behavior and populations. The Department recommends using only the minimum amount of light

---

<sup>1</sup> <https://www.fws.gov/office/arizona-ecological-services/contact-us>

---

**azgfd.gov | 602.942.3000**

**5000 W. CAREFREE HIGHWAY, PHOENIX AZ 85086**

**GOVERNOR:** DOUGLAS A. DUCEY **COMMISSIONERS:** CHAIRMAN JAMES E. GOUGHNOUR, PAYSON | TODD G. GEILER, PRESCOTT  
CLAY HERNANDEZ, TUCSON | MARSHA PETRIE SUE, SCOTTSDALE | LELAND S. "BILL" BRAKE, ELGIN

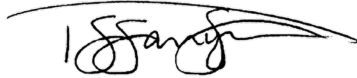
**DIRECTOR:** TY E. GRAY **DEPUTY DIRECTOR:** TOM P. FINLEY

needed for safety, especially in areas immediately adjacent to open space or undeveloped lands. The Department encourages the use of motion sensing lighting and narrow spectrum lighting wherever possible to lower the range of species affected by lighting. Also, please consider shielding, canting, or cutting all lighting, where possible, to ensure that light reaches only areas needing illumination and to minimize impacts to nocturnal wildlife.

- If any landscaping will be conducted, the Department recommends using drought-tolerant species that are native to the area. Landscaping with native plants can help support wildlife and pollinator species that inhabit rural and urbanized areas. Visit the [Arizona Native Plant Society's website](#)<sup>2</sup> for information on preferred native plants to utilize in landscaping.

The Department appreciates the opportunity to provide an evaluation of impacts to wildlife or wildlife habitats associated with the SU22-21 (Slope Along) project. If you have any questions regarding this letter, please contact me at (623) 236-7222 and visit our [website](#)<sup>3</sup> for additional guidelines.

Sincerely,



Tiffany Sprague  
Project Evaluation Program Specialist, Habitat Branch  
Arizona Game and Fish Department

AZGFD #M22-10171712

---

<sup>2</sup> <https://aznps.com/grow-native/>

<sup>3</sup> <https://www.azgfd.com/wildlife/planning/wildlifeguidelines/>

# Arizona Environmental Online Review Tool Report



## *Arizona Game and Fish Department Mission*

*To conserve Arizona's diverse wildlife resources and manage for safe, compatible outdoor recreation opportunities for current and future generations.*

**Project Name:**

SU22-21 (Slope Along)

**Project Description:**

Special Use Authorization to approve three short term rentals. One will be an approximately 320 square foot cargo container, and the other two will consist of canvas tents of 645 and 290 square feet.

**Project Type:**

Development Outside Municipalities (Rural Development), Residential single dwelling and associated infrastructure, New construction

**Contact Person:**

Tiffany Sprague

**Organization:**

AZ Game and Fish Dept

**On Behalf Of:**

COCHISE

**Project ID:**

HGIS-17619

***Please review the entire report for project type and/or species recommendations for the location information entered. Please retain a copy for future reference.***

**Disclaimer:**

1. This Environmental Review is based on the project study area that was entered. The report must be updated if the project study area, location, or the type of project changes.
2. This is a preliminary environmental screening tool. It is not a substitute for the potential knowledge gained by having a biologist conduct a field survey of the project area. This review is also not intended to replace environmental consultation (including federal consultation under the Endangered Species Act), land use permitting, or the Departments review of site-specific projects.
3. The Departments Heritage Data Management System (HDMS) data is not intended to include potential distribution of special status species. Arizona is large and diverse with plants, animals, and environmental conditions that are ever changing. Consequently, many areas may contain species that biologists do not know about or species previously noted in a particular area may no longer occur there. HDMS data contains information about species occurrences that have actually been reported to the Department. Not all of Arizona has been surveyed for special status species, and surveys that have been conducted have varied greatly in scope and intensity. Such surveys may reveal previously undocumented population of species of special concern.
4. HabiMap Arizona data, specifically Species of Greatest Conservation Need (SGCN) under our State Wildlife Action Plan (SWAP) and Species of Economic and Recreational Importance (SERI), represent potential species distribution models for the State of Arizona which are subject to ongoing change, modification and refinement. The status of a wildlife resource can change quickly, and the availability of new data will necessitate a refined assessment.

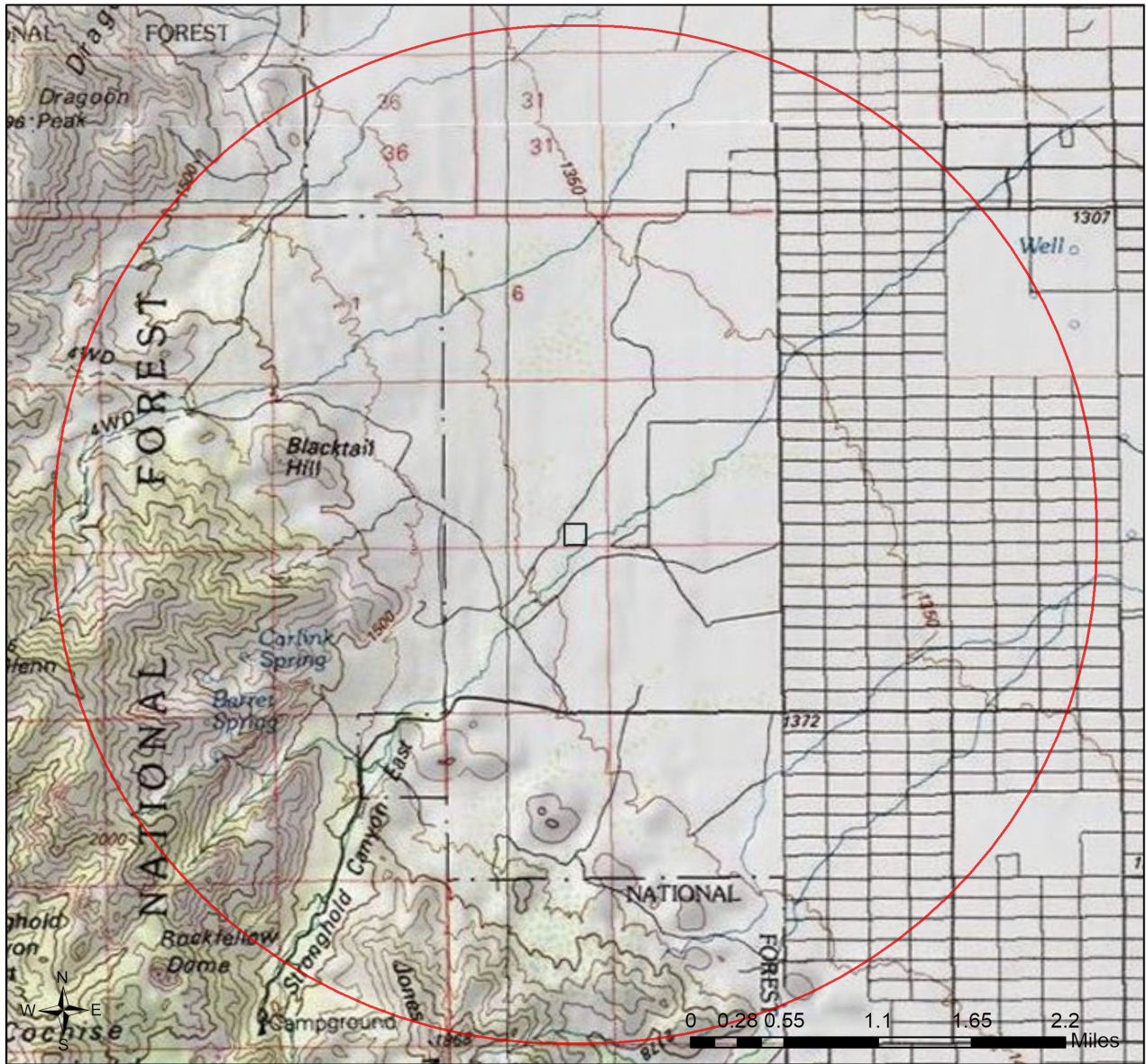
**Locations Accuracy Disclaimer:**



Project locations are assumed to be both precise and accurate for the purposes of environmental review. The creator/owner of the Project Review Report is solely responsible for the project location and thus the correctness of the Project Review Report content.

**Recommendations Disclaimer:**

1. The Department is interested in the conservation of all fish and wildlife resources, including those species listed in this report and those that may have not been documented within the project vicinity as well as other game and nongame wildlife.
2. Recommendations have been made by the Department, under authority of Arizona Revised Statutes Title 5 (Amusements and Sports), 17 (Game and Fish), and 28 (Transportation).
3. Potential impacts to fish and wildlife resources may be minimized or avoided by the recommendations generated from information submitted for your proposed project. These recommendations are preliminary in scope, designed to provide early considerations on all species of wildlife.
4. Making this information directly available does not substitute for the Department's review of project proposals, and should not decrease our opportunity to review and evaluate additional project information and/or new project proposals.
5. Further coordination with the Department requires the submittal of this Environmental Review Report with a cover letter and project plans or documentation that includes project narrative, acreage to be impacted, how construction or project activity(s) are to be accomplished, and project locality information (including site map). Once AGFD had received the information, please allow 30 days for completion of project reviews. Send requests to:  
**Project Evaluation Program, Habitat Branch**  
**Arizona Game and Fish Department**  
**5000 West Carefree Highway**  
**Phoenix, Arizona 85086-5000**  
**Phone Number: (623) 236-7600**  
**Fax Number: (623) 236-7366**  
**Or**  
[PEP@azgfd.gov](mailto:PEP@azgfd.gov)
6. Coordination may also be necessary under the National Environmental Policy Act (NEPA) and/or Endangered Species Act (ESA). Site specific recommendations may be proposed during further NEPA/ESA analysis or through coordination with affected agencies

### SU22-21 (Slope Along) USA Topo Basemap With Locator Map



-  Buffered Project Boundary
-  Project Boundary

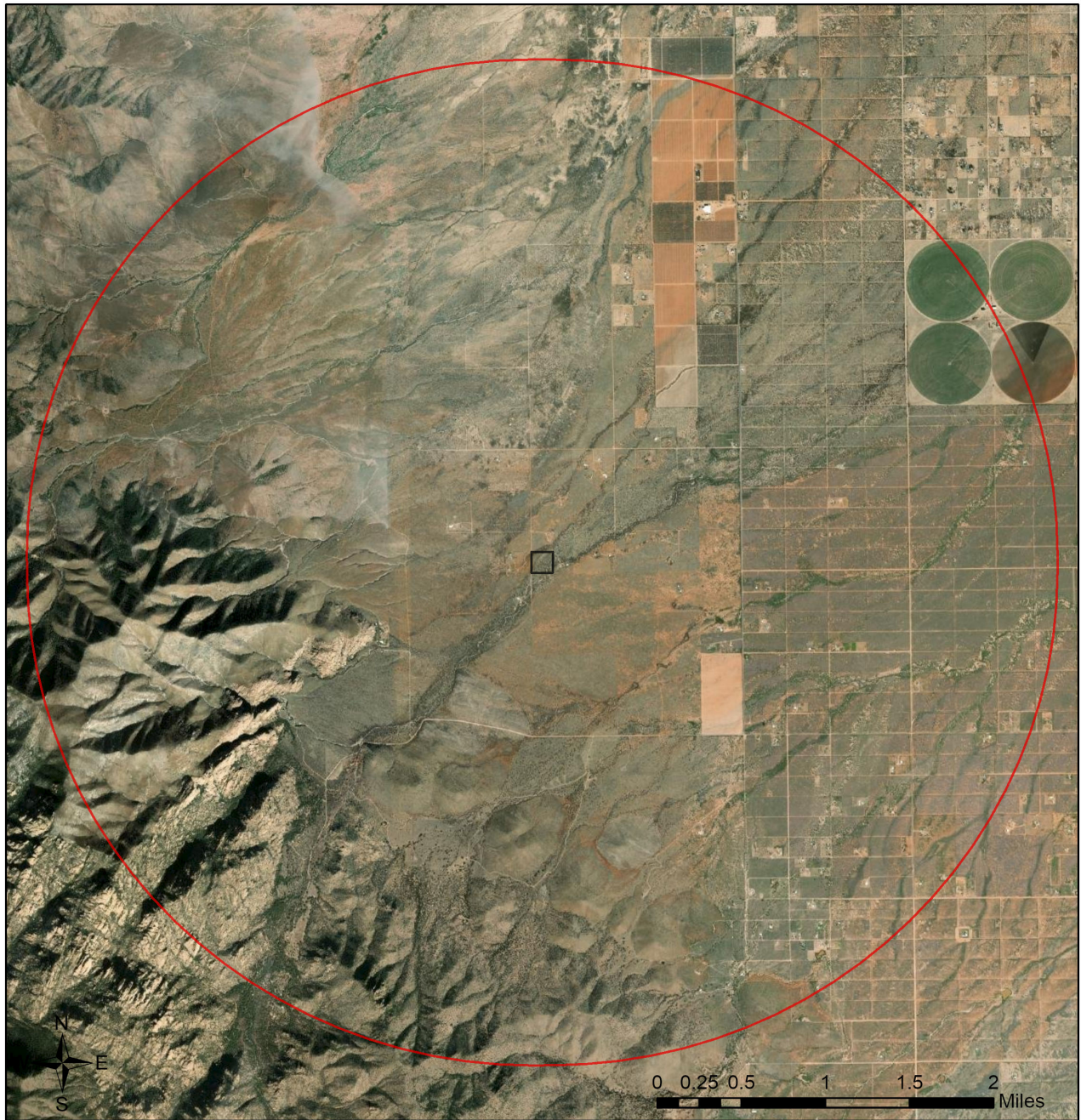
Project Size (acres): 10.38  
Lat/Long (DD): 31.9642 / -109.9355  
County(s): Cochise  
AGFD Region(s): Tucson  
Township/Range(s): T17S, R24E  
USGS Quad(s): COCHISE STRONGHOLD



Sources: Esri, Airbus DS, USGS, NGA, NASA, CGIAR, N Robinson, NCEAS, NLS, OS, NMA, Geodatastyrelsen, Rijkswaterstaat, GSA, Geoland, FEMA, Intermap and the GIS user community



## SU22-21 (Slope Along)

Web Map As Submitted By User



-  Buffered Project Boundary
-  Project Boundary

Project Size (acres): 10.38  
Lat/Long (DD): 31.9642 / -109.9355  
County(s): Cochise  
AGFD Region(s): Tucson  
Township/Range(s): T17S, R24E  
USGS Quad(s): COCHISE STRONGHOLD

Source: Esri, Maxar, Earthstar Geographics, and the GIS User Community

**Special Status Species Documented within 3 Miles of Project Vicinity**

Scientific Name	Common Name	FWS	USFS	BLM	NPL	SGCN
Aspidoscelis stictogramma	Giant Spotted Whiptail	SC	S			1B
Carex ultra	Cochise Sedge		S	S		
Choeronycteris mexicana	Mexican Long-tongued Bat	SC	S	S		1C
Gastrocopta dalliana	Shortneck Snaggletooth	CCA				1C
Graptopetalum bartramii	Bartram Stonecrop	LT	S	S	SR	
Heloderma suspectum	Gila Monster					1A
Lithobates chiricahuensis	Chiricahua Leopard Frog	LT				1A
Penstemon discolor	Catalina Beardtongue		S		HS	
Terrapene ornata luteola	Desert Box Turtle			S		1A

Note: Status code definitions can be found at <https://www.azgfd.com/wildlife/planning/wildlifeguidelines/statusdefinitions/>

**No Special Areas Detected**

No special areas were detected within the project vicinity.

**Species of Greatest Conservation Need Predicted that Intersect with Project Footprint as Drawn, based on Predicted Range Models**

Scientific Name	Common Name	FWS	USFS	BLM	NPL	SGCN
Ammodramus savannarum ammolegus	Arizona grasshopper sparrow		S	S		1B
Ammodramus savannarum perpallidus	Western Grasshopper Sparrow					1B
Ammospermophilus harrisi	Harris' Antelope Squirrel					1B
Anthus spragueii	Sprague's Pipit	SC				1A
Aquila chrysaetos	Golden Eagle	BGA		S		1B
Aspidoscelis flagellicauda	Gila Spotted Whiptail					1B
Athene cunicularia hypugaea	Western Burrowing Owl	SC	S	S		1B
Baeolophus ridgwayi	Juniper Titmouse					1C
Buteo regalis	Ferruginous Hawk	SC		S		1B
Buteo swainsoni	Swainson's Hawk					1C
Callipepla squamata	Scaled Quail					1C
Chordeiles minor	Common Nighthawk					1B
Coccyzus americanus	Yellow-billed Cuckoo (Western DPS)	LT	S			1A
Coluber bilineatus	Sonoran Whipsnake					1B
Corynorhinus townsendii pallescens	Pale Townsend's Big-eared Bat	SC	S	S		1B
Crotalus lepidus	Rock Rattlesnake					1A
Crotalus tigris	Tiger Rattlesnake					1B
Cyananthus latirostris	Broad-billed Hummingbird		S			1B
Cynomys ludovicianus	Black-tailed Prairie Dog	CCA		S		1A
Cyrtonyx montezumae	Montezuma Quail					1C

**Species of Greatest Conservation Need Predicted that Intersect with Project Footprint as Drawn, based on Predicted Range Models**

Scientific Name	Common Name	FWS	USFS	BLM	NPL	SGCN
Dipodomys spectabilis	Banner-tailed Kangaroo Rat			S		1B
Euderma maculatum	Spotted Bat	SC	S	S		1B
Eumops perotis californicus	Greater Western Bonneted Bat	SC		S		1B
Falco peregrinus anatum	American Peregrine Falcon	SC	S	S		1A
Glaucidium gnoma gnoma	Mountain Pygmy-owl					1B
Heloderma suspectum	Gila Monster					1A
Hypsiglena sp. nov.	Hooded Nightsnake					1B
Incilius alvarius	Sonoran Desert Toad					1B
Lampornis clemenciae	Blue-throated Hummingbird					1B
Lasiurus blossevillii	Western Red Bat		S			1B
Lasiurus xanthinus	Western Yellow Bat		S			1B
Leopardus pardalis	Ocelot	LE				1A
Leptonycteris yerbabuenae	Lesser Long-nosed Bat	SC				1A
Lepus alleni	Antelope Jackrabbit					1B
Lithobates blairi	Plains Leopard Frog			S		1A
Lithobates chiricahuensis	Chiricahua Leopard Frog	LT				1A
Meleagris gallopavo mexicana	Gould's Turkey		S			1B
Melospiza lincolni	Lincoln's Sparrow					1B
Micrathene whitneyi	Elf Owl					1C
Micruroides euryxanthus	Sonoran Coralsnake					1B
Myiarchus tyrannulus	Brown-crested Flycatcher					1C
Myotis occultus	Arizona Myotis	SC		S		1B
Myotis velifer	Cave Myotis	SC		S		1B
Myotis yumanensis	Yuma Myotis	SC				1B
Nyctinomops femorosaccus	Pocketed Free-tailed Bat					1B
Odocoileus virginianus	White-tailed Deer					1B
Oreoscoptes montanus	Sage Thrasher					1C
Oreothlypis luciae	Lucy's Warbler					1C
Panthera onca	Jaguar	LE				1A
Passerculus sandwichensis	Savannah Sparrow					1B
Peromyscus nasutus	Northern Rock Deermouse					1B
Peucaea botterii arizonae	Arizona Botteri's Sparrow			S		1B
Phrynosoma solare	Regal Horned Lizard					1B
Picoides arizonae	Arizona Woodpecker		S			1B
Sceloporus slevini	Slevin's Bunchgrass Lizard		S	S		1B
Setophaga petechia	Yellow Warbler					1B
Sphyrapicus nuchalis	Red-naped Sapsucker					1C
Spizella atrogularis	Black-chinned Sparrow					1C
Spizella breweri	Brewer's Sparrow					1C

**Species of Greatest Conservation Need Predicted that Intersect with Project Footprint as Drawn, based on Predicted Range Models**

Scientific Name	Common Name	FWS	USFS	BLM	NPL	SGCN
<i>Strix occidentalis lucida</i>	Mexican Spotted Owl	LT				1A
<i>Sturnella magna</i>	Eastern Meadowlark					1C
<i>Tadarida brasiliensis</i>	Brazilian Free-tailed Bat					1B
<i>Terrapene ornata</i>	Ornate Box Turtle					1A
<i>Vireo bellii arizonae</i>	Arizona Bell's Vireo					1B
<i>Vulpes macrotis</i>	Kit Fox	No Status				1B

**Species of Economic and Recreation Importance Predicted that Intersect with Project Footprint as Drawn**

Scientific Name	Common Name	FWS	USFS	BLM	NPL	SGCN
<i>Callipepla gambelii</i>	Gambel's Quail					
<i>Callipepla squamata</i>	Scaled Quail					1C
<i>Odocoileus hemionus</i>	Mule Deer					
<i>Patagioenas fasciata</i>	Band-tailed Pigeon					1C
<i>Pecari tajacu</i>	Javelina					
<i>Puma concolor</i>	Mountain Lion					
<i>Zenaida asiatica</i>	White-winged Dove					
<i>Zenaida macroura</i>	Mourning Dove					

**Project Type: Development Outside Municipalities (Rural Development), Residential single dwelling and associated infrastructure, New construction**

**Project Type Recommendations:**

Fence recommendations will be dependent upon the goals of the fence project and the wildlife species expected to be impacted by the project. General guidelines for ensuring wildlife-friendly fences include: barbless wire on the top and bottom with the maximum fence height 42", minimum height for bottom 16". Modifications to this design may be considered for fencing anticipated to be routinely encountered by elk, bighorn sheep or pronghorn (e.g., Pronghorn fencing would require 18" minimum height on the bottom). Please refer to the Department's Fencing Guidelines located on Wildlife Friendly Guidelines page, which is part of the Wildlife Planning button at <https://www.azgfd.com/wildlife/planning/wildlifeguidelines/>.

During the planning stages of your project, please consider the local or regional needs of wildlife in regards to movement, connectivity, and access to habitat needs. Loss of this permeability prevents wildlife from accessing resources, finding mates, reduces gene flow, prevents wildlife from re-colonizing areas where local extirpations may have occurred, and ultimately prevents wildlife from contributing to ecosystem functions, such as pollination, seed dispersal, control of prey numbers, and resistance to invasive species. In many cases, streams and washes provide natural movement corridors for wildlife and should be maintained in their natural state. Uplands also support a large diversity of species, and should be contained within important wildlife movement corridors. In addition, maintaining biodiversity and ecosystem functions can be facilitated through improving designs of structures, fences, roadways, and culverts to promote passage for a variety of wildlife. Guidelines for many of these can be found at: <https://www.azgfd.com/wildlife/planning/wildlifeguidelines/>.

Consider impacts of outdoor lighting on wildlife and develop measures or alternatives that can be taken to increase human safety while minimizing potential impacts to wildlife. Conduct wildlife surveys to determine species within project area, and evaluate proposed activities based on species biology and natural history to determine if artificial lighting may disrupt behavior patterns or habitat use. Use only the minimum amount of light needed for safety. Narrow spectrum bulbs should be used as often as possible to lower the range of species affected by lighting. All lighting should be shielded, canted, or cut to ensure that light reaches only areas needing illumination.

Minimize the potential introduction or spread of exotic invasive species, including aquatic and terrestrial plants, animals, insects and pathogens. Precautions should be taken to wash and/or decontaminate all equipment utilized in the project activities before entering and leaving the site. See the Arizona Department of Agriculture website for a list of prohibited and restricted noxious weeds at <https://www.invasivespeciesinfo.gov/unitedstates/az.shtml> and the Arizona Native Plant Society <https://aznps.com/invas> for recommendations on how to control. To view a list of documented invasive species or to report invasive species in or near your project area visit iMapInvasives - a national cloud-based application for tracking and managing invasive species at <https://imap.naturereserve.org/imap/services/page/map.html>.

- To build a list: zoom to your area of interest, use the identify/measure tool to draw a polygon around your area of interest, and select "See What's Here" for a list of reported species. To export the list, you must have an account and be logged in. You can then use the export tool to draw a boundary and export the records in a csv file.

The Department recommends that wildlife surveys are conducted to determine if noise-sensitive species occur within the project area. Avoidance or minimization measures could include conducting project activities outside of breeding seasons.

Based on the project type entered, coordination with State Historic Preservation Office may be required (<https://azstateparks.com/>).

Trenches should be covered or back-filled as soon as possible. Incorporate escape ramps in ditches or fencing along the perimeter to deter small mammals and herpetofauna (snakes, lizards, tortoise) from entering ditches.

Based on the project type entered, coordination with Arizona Department of Water Resources may be required (<https://new.azwater.gov/>).

Based on the project type entered, coordination with U.S. Army Corps of Engineers may be required (<http://www.usace.army.mil/>)

Based on the project type entered, coordination with County Flood Control district(s) may be required.

Vegetation restoration projects (including treatments of invasive or exotic species) should have a completed site-evaluation plan (identifying environmental conditions necessary to re-establish native vegetation), a revegetation plan (species, density, method of establishment), a short and long-term monitoring plan, including adaptive management guidelines to address needs for replacement vegetation.

**Project Location and/or Species Recommendations:**

HDMS records indicate that one or more native plants listed on the **Arizona Native Plant Law and Antiquities Act** have been documented within the vicinity of your project area. Please contact:

Arizona Department of Agriculture  
1688 W Adams St.  
Phoenix, AZ 85007  
Phone: 602.542.4373

<https://agriculture.az.gov/sites/default/files/Native%20Plant%20Rules%20-%20AZ%20Dept%20of%20Ag.pdf> starts on page 44

HDMS records indicate that **Chiricahua Leopard Frogs** have been documented within the vicinity of your project area. Please review the Chiricahua Leopard Frog Management Guidelines found

at: <https://s3.amazonaws.com/azgfd-portal-wordpress/PortalImages/files/wildlife/planningFor/wildlifeFriendlyGuidelines/FINALLithchirHabitatGdlns.pdf>

HDMS records indicate that one or more **Listed, Proposed, or Candidate** species or **Critical Habitat** (Designated or Proposed) have been documented in the vicinity of your project. The Endangered Species Act (ESA) gives the US Fish and Wildlife Service (USFWS) regulatory authority over all federally listed species. Please contact USFWS Ecological Services Offices at <https://www.fws.gov/office/arizona-ecological-services> or:

**Phoenix Main Office**  
9828 North 31st Avenue #C3  
Phoenix, AZ 85051-2517  
Phone: 602-242-0210  
Fax: 602-242-2513

**Tucson Sub-Office**  
201 N. Bonita Suite 141  
Tucson, AZ 85745  
Phone: 520-670-6144  
Fax: 520-670-6155

**Flagstaff Sub-Office**  
SW Forest Science Complex  
2500 S. Pine Knoll Dr.  
Flagstaff, AZ 86001  
Phone: 928-556-2157  
Fax: 928-556-2121

**From:** [Ruth Bigelow](#)  
**To:** [Kirschmann, Robert](#)  
**Subject:** RE: Transmittal SU-22-27 (191 Potato Processing Expansion)  
**Date:** Friday, December 30, 2022 9:28:06 AM

**CAUTION: EXTERNAL EMAIL\***

Good Morning,

SSVEC has no special conditions to submit in regard to this special use permit request.

If the property owner/applicant has not yet contacted SSVEC about this project, they are encouraged to do so to avoid any surprise expenses or project limitations, please have them refer to the Sulphur Springs Valley Electric Cooperative website at [www.ssvvec.org](http://www.ssvvec.org), then the "Services" tab for information about Service Conditions, Service Entrance Requirements, how to establish a new service, and for Line Extension/New Service Applications.

They can also contact our Engineering Services Representative for the Willcox Area at 520-384-5469.

Thank you,

## **Ruth Bigelow**

Lead Line Extension ROW Agent

[Sulphur Springs Valley Electric Cooperative](#)

(520) 384-5513

---

**From:** Kirschmann, Robert <RKirschmann@cochise.az.gov>

**Sent:** Wednesday, December 21, 2022 11:33 AM

**To:** Solis, Joaquin <JSolis@cochise.az.gov>; Simmons, Bradley A <bsimmons@cochise.az.gov>; Watkins, Jackie <JWatkins@cochise.az.gov>; Fast, Travis <TFast@cochise.az.gov>; Brady, Shon <SBrady@cochise.az.gov>; Marinez, Frances G <FMarinez@cochise.az.gov>; Lopez, Gabe A <glopez@cochise.az.gov>; Duchon, Daniel <DDuchon@cochise.az.gov>; Esparza, Paul <PEsparza@cochise.az.gov>; Correa, Paul <PCorrea@cochise.az.gov>; Capas, Carol <CCapas@cochise.az.gov>; Richard B. Obenshain <rrobenshain@azwater.gov>; pep@azgfd.gov; Ruth Bigelow <rbigelow@ssvec.com>; admin@sunsitesfire.org; patinat9@vtc.net

**Cc:** Coxworth, Daniel <dcoxworth@cochise.az.gov>; BOS-Supervisors <BOSSupervisors@cochise.az.gov>; McLachlan, Christine <CMcLachlan@cochise.az.gov>; Albert Young <ayoung@douglasschools.org>; Gerry Gonzalez <Gerry.Gonzalez@outlook.com>; Jim Martzke <jvmartzke@powerc.net>; Kim DePew <htrdhrts@gmail.com>; Nancy Welch <NancyWelch@vtc.net>; Nathan Watkins <nfwatkins@gmail.com>; Robert Montgomery <robmont59@msn.com>; Wayne Gregan <>wgregan@rrexpress.net>; Bronson, Susan <SBronson@cochise.az.gov>; lawrencejay516@gmail.com; James Gomes <jgomes@azdot.gov>; Jeremy Moore <jmoore3@azdot.gov>

**Subject:** Transmittal SU-22-27 (191 Potato Processing Expansion)

**[CAUTION]** This email originated from outside of SSVEC. Do not click links or open attachments unless you recognize the sender and know the

content is safe.

Good morning,

Please see the attached transmittal and associated application for an approximately 150,000 square foot addition to the existing potato processing facility in the Sulphur Springs Valley.

Reminder: Please do not “reply to all”

Best regards,

**Robert Kirschmann**

Planner II

Cochise County Community Development

Development Services Department

126 West 5<sup>th</sup> Street, Suite 4

Benson, AZ 85602

520-432-9248 Direct

520-432-9300 Main

520-432-9278 fax

**GIS Online Map:** [INFOMap](#)

**APPLY ONLINE:** [CITIZEN SERVE](#)

***Public Programs...Personal Service***

[www.cochise.az.gov](http://www.cochise.az.gov)

**CONFIDENTIALITY NOTE: This e-mail and any attachments are confidential and may be protected by legal privilege. If you are not the intended recipient, be aware that any disclosure, copying, distribution or use of this e-mail or any attachment is prohibited. If you have received this e-mail in error, please notify us immediately by returning it to the sender and delete this copy from your system. Thank you for your cooperation.**

This E-mail is from an **EXTERNAL** address. **DO NOT click on links or open attachments unless you trust the sender and know the content is safe.** If you suspect this message to be phishing, please report it using the Phish Alert Button at the top of the email, or forward to [cochise.az.gov@missedspam.com](mailto:cochise.az.gov@missedspam.com) or contact IT support at 520-432-8301.