

# COCHISE COUNTY

## Maintained Roads

Board of Supervisors

May 7, 2024



*Public Programs...Personal Service*

# Road Classification

- State Highways (Arizona Department of Transportation)
- Local Agency Roads (City/Town)
- County Maintained Road
  - County Highways, declared by the BOS
  - County Road, adopted for maintenance
- Public Roads Eligible for County Maintenance
- Public Roads, not accepted for maintenance
- Private Roads



## Roads in Cochise County

- Approximately 5,114 Miles Roads Unincorporated Area
  - Does not include State Highways
- 3,681 Miles of Non-County Maintained Roads
- 1,433 Miles County Maintained Roads
  - Paved Roads 694 miles
    - Asphalt 84 miles
    - Chip Sealed 610 miles
  - Dirt Roads 739 miles
    - Primitive Roads 431 miles



# COCHISE COUNTY

# GIS / Maps – Maintained Road

**Cochise County Maintained Road**

Enter Address or Parcel

About

Click on a County Maintained Road symbol on the map to view additional information.

**Legend**

- Cochise County Maintained Road:
  - Paved
  - Not Paved
  - Not Paved - Primitive Road
- Incorporated City

Note: Roads are designated as a Primitive Road in accordance with [Arizona Revised Statute 28-6706](#)

**Tools**

**Search**

Enter Address or Parcel

Use the Search tool to enter an Address, Location, or Parcel Number (parcel number without hyphen, example 12345678A). The Search tool utilizes a combination of County and external sources to aid in navigating. Please be aware that Search results using external sources may place you in an unexpected area.

**Share**

Use the Share tool to create a URL link.

**Attribute Table**

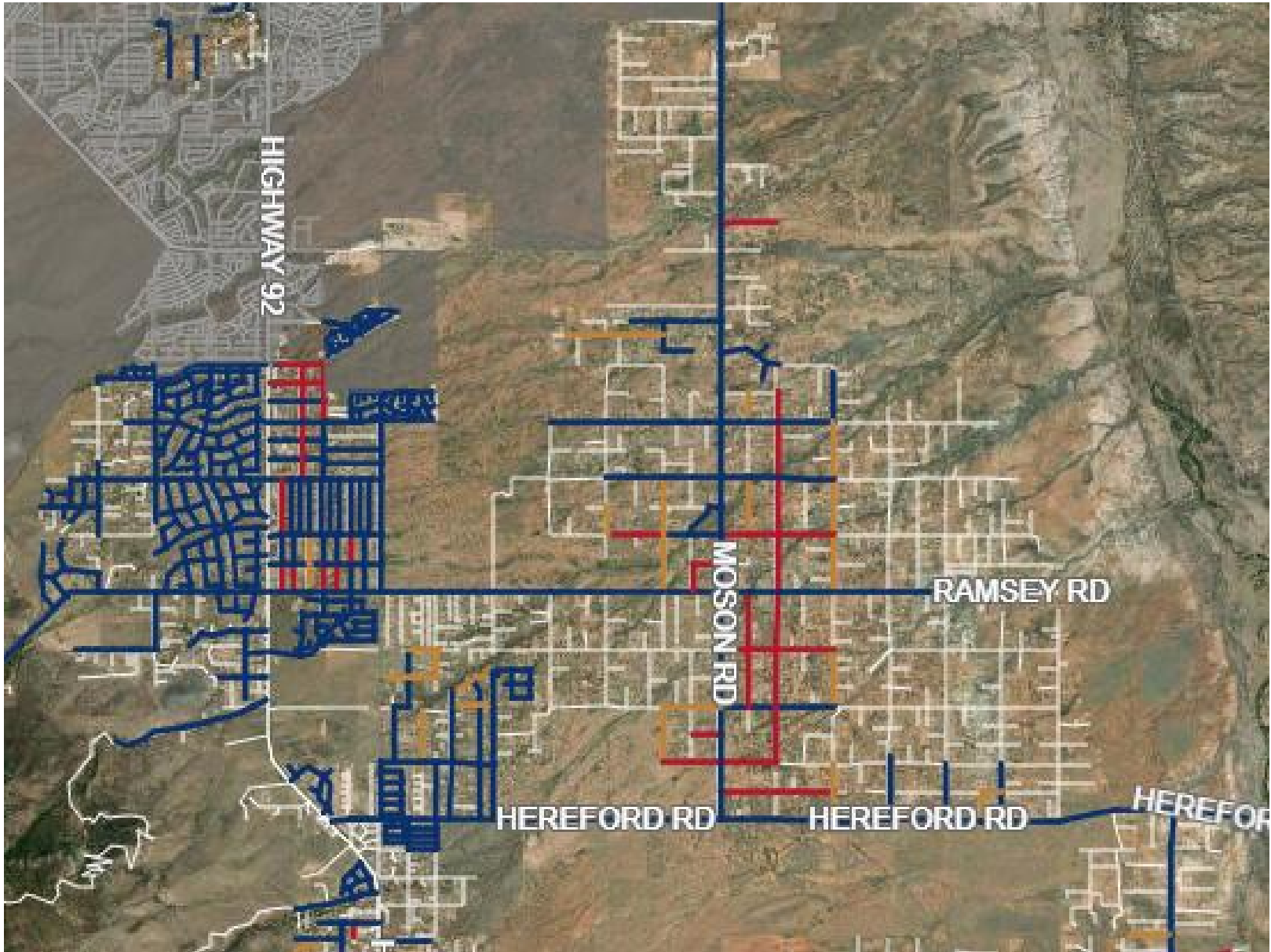
At the bottom of the map, use the arrow tab to access a table containing attribute information about feature(s) displayed in the map.

-110.629 32.215 Degrees

<https://cochise.maps.arcgis.com/apps/webappviewer/index.html?id=023ba941458a4ce7b93498e6a956d70e>

<https://gis-cochise.opendata.arcgis.com/>



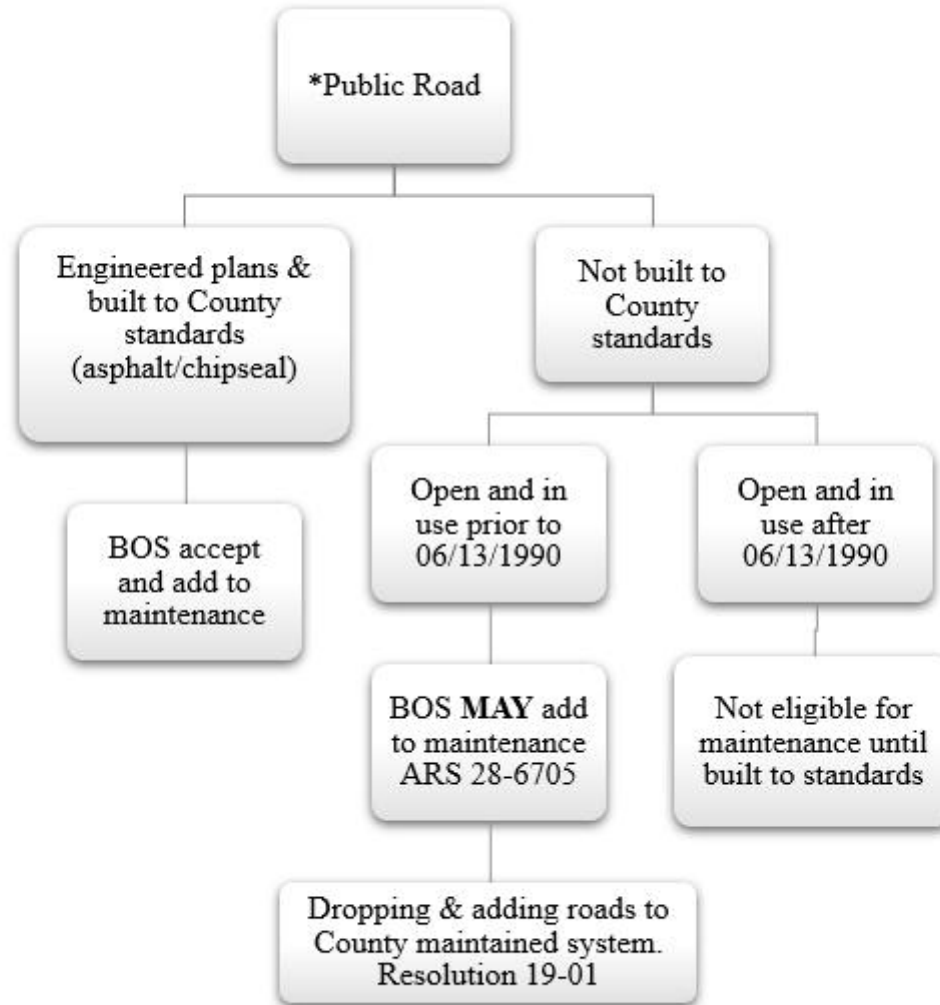


## COCHISE COUNTY

- Gas tax funds road maintenance
  - Does not include State Highways
- Highway User Revenue Funds (HURF)
  - Arizona gas tax 18 cents a gallon
  - Cochise County receives 0.12 cents a gallon
- If you paid for 50 gallons of gas a month that would be \$9 in HURF Tax and about 6 cents comes back to Cochise County.
- Not Property Tax



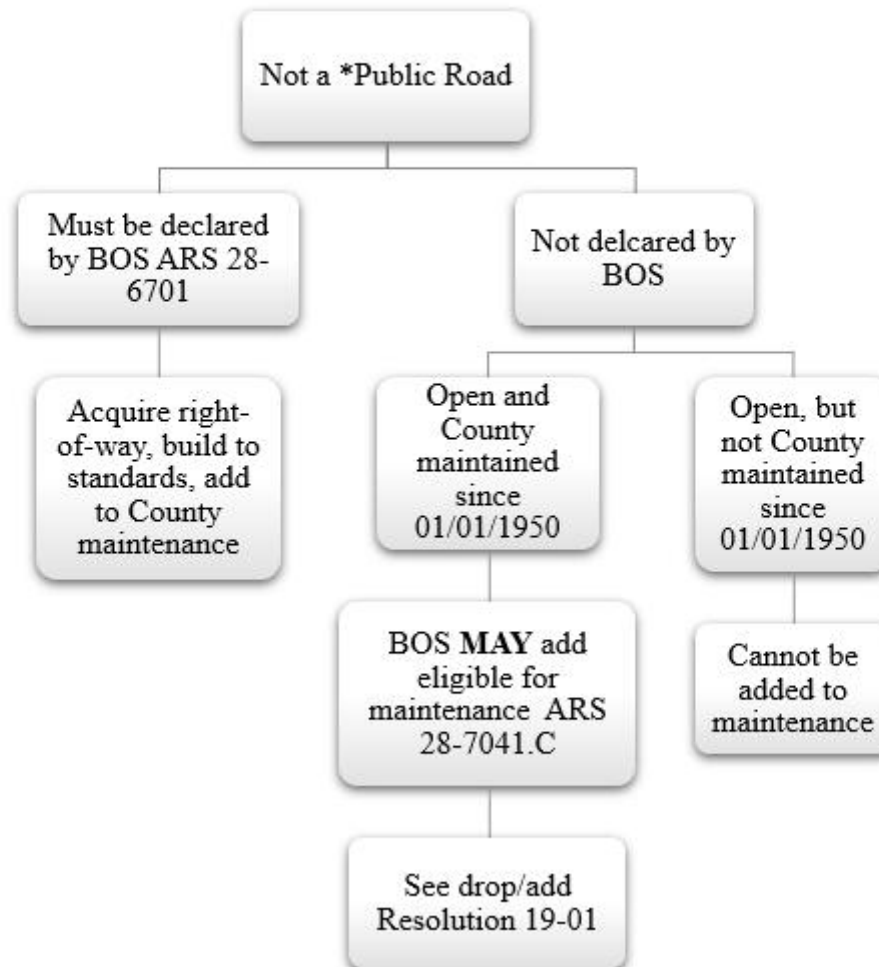
# ROAD MAINTENANCE ELIGIBILITY



\*Public Road= one that has been legally granted to the County or to the public, either in fee or as an easement



# ROAD MAINTENANCE ELIGIBILITY



# Add / Drop Dirt Road from Maintenance

## Highlights of Resolution 19-01

- Drop Road Considerations
  - ADT (Average Daily Traffic) less than 20
  - Encroachments
  - Opinion of the users of the road
- Add Road Minimum Requirements
  - Public right-of-way greater than 50 feet
  - Constructed prior to June 13, 1990
  - Contiguous to a County maintained road
  - ADT greater than 100



## COCHISE COUNTY

# Road Districts A.R.S. Title 48

- Road Improvement District (RID)
  - Residents responsible for cost of design and construction to improve public roads to County Standards
  - County then assumes maintenance of road
- Road Improvement and Maintenance District (RIMD)
  - Residents improve road to a standard that is less than County Standard
  - District is responsible for maintenance
  - Local elected governing board of residents in the district
  - District funds, additional property tax
  - RIMD in County
    - Fairfield Estates
    - High Knoll Ranches

