

COCHISE COUNTY

Maintained Roads

Board of Supervisors

May 21, 2024



Public Programs...Personal Service

Road Classification

- State Highways (Arizona Department of Transportation)
- Local Agency Roads (City/Town)
- County Maintained Road
 - County Highways, declared by the BOS
 - County Road, adopted for maintenance
- Public Roads Eligible for County Maintenance
- Public Roads, not accepted for maintenance
- Private Roads



Roads in Cochise County

- Approximately 5,114 Miles Roads Unincorporated Area
 - Does not include State Highways
- 3,681 Miles of Non-County Maintained Roads
- 1,433 Miles County Maintained Roads
 - Paved Roads 694 miles
 - Asphalt 84 miles
 - Chip Sealed 610 miles
 - Dirt Roads 739 miles
 - Primitive Roads 431 miles



COCHISE COUNTY

GIS / Maps – Maintained Road

Cochise County Maintained Road

Enter Address or Parcel

About

Click on a County Maintained Road symbol on the map to view additional information.

Legend

- Cochise County Maintained Road:
 - Paved
 - Not Paved
 - Not Paved - Primitive Road
- Incorporated City

Note: Roads are designated as a Primitive Road in accordance with [Arizona Revised Statute 28-6706](#)

Tools

Search

Enter Address or Parcel

Use the Search tool to enter an Address, Location, or Parcel Number (parcel number without hyphen, example 12345678A). The Search tool utilizes a combination of County and external sources to aid in navigating. Please be aware that Search results using external sources may place you in an unexpected area.

Share

Use the Share tool to create a URL link.

Attribute Table

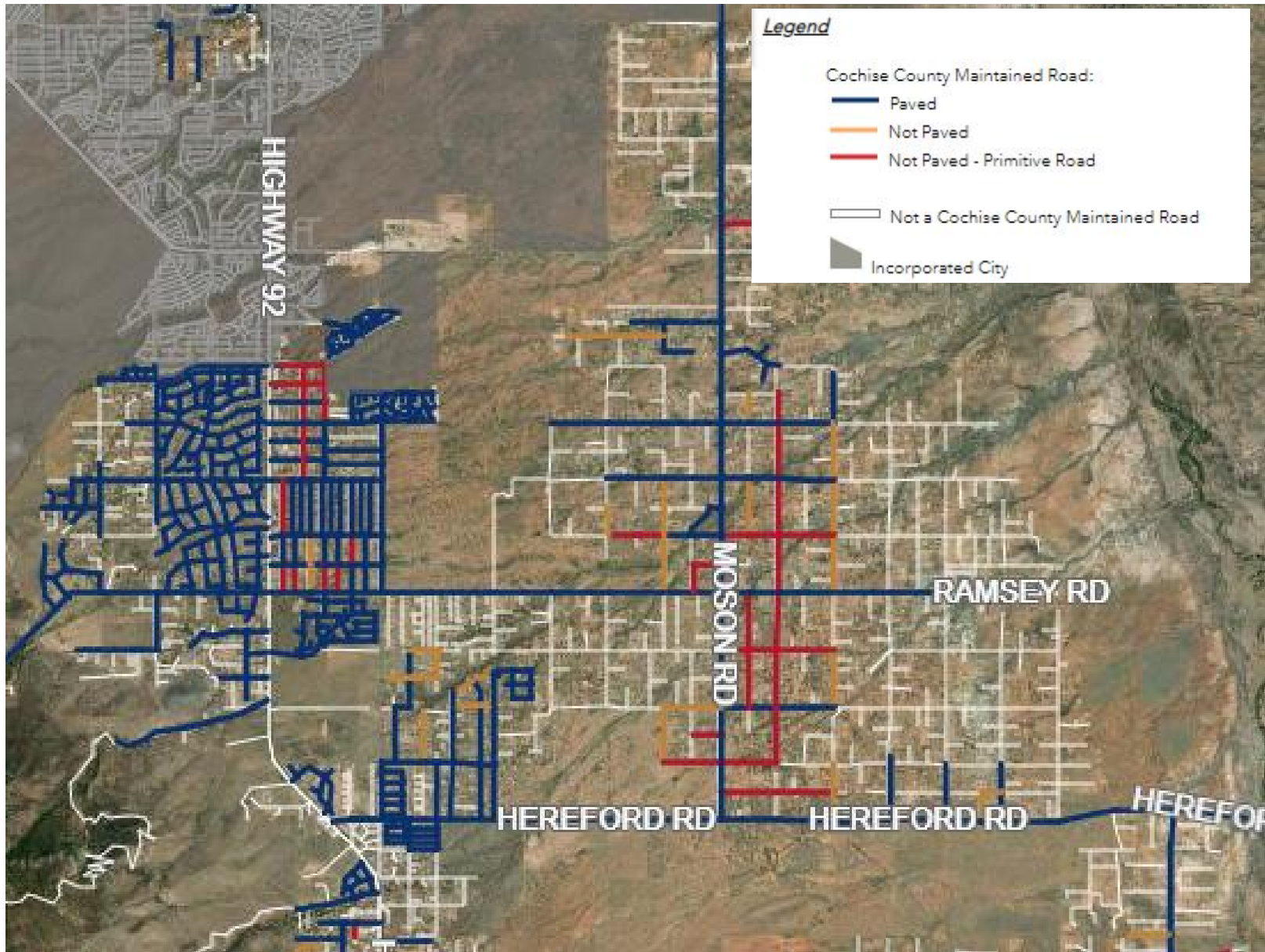
At the bottom of the map, use the arrow tab to access a table containing attribute information about feature(s) displayed in the map.

-110.629 32.215 Degrees

<https://cochise.maps.arcgis.com/apps/webappviewer/index.html?id=023ba941458a4ce7b93498e6a956d70e>

<https://gis-cochise.opendata.arcgis.com/>



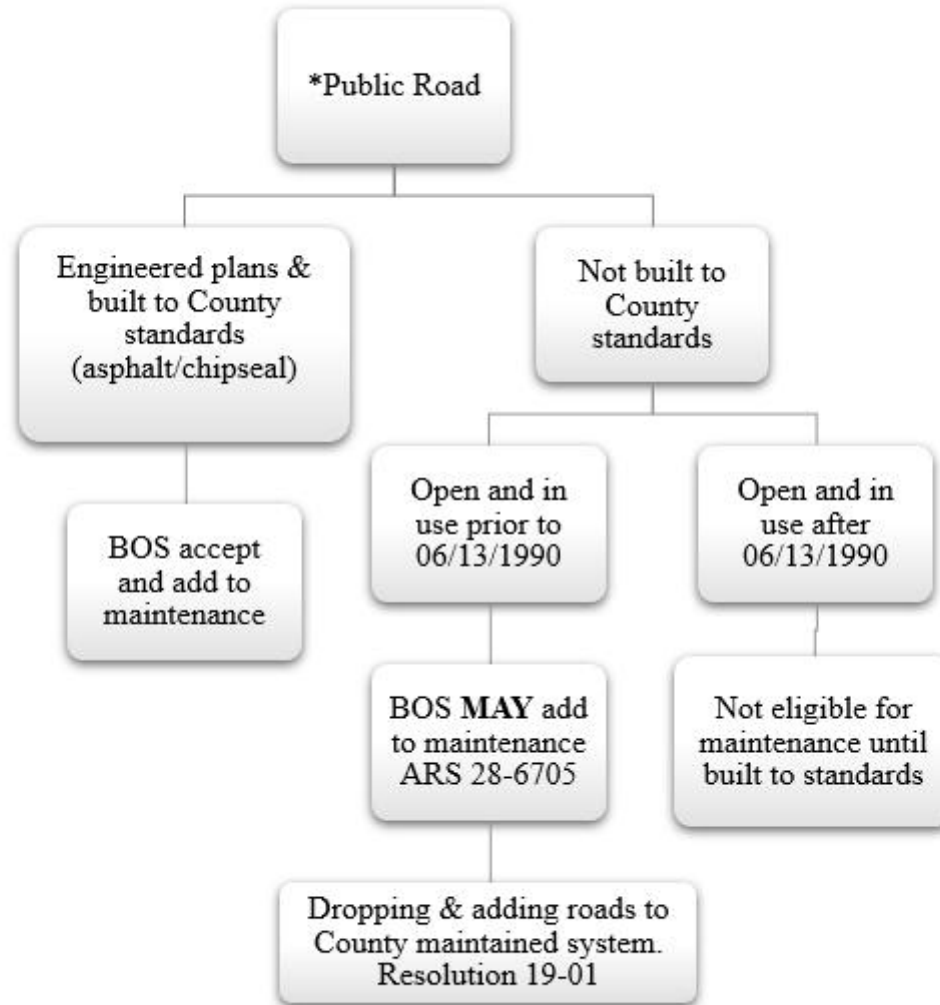


COCHISE COUNTY

- Gas Tax, not Property Tax, funds road maintenance
- Highway User Revenue Funds (HURF)
 - Arizona gas tax 18 cents a gallon
 - Cochise County receives 0.12 cents a gallon
- If you bought 50 gallons of gas a month that would be \$9 in HURF Tax and about 6 cents comes back to Cochise County.
- Vehicle License Tax (VLT)



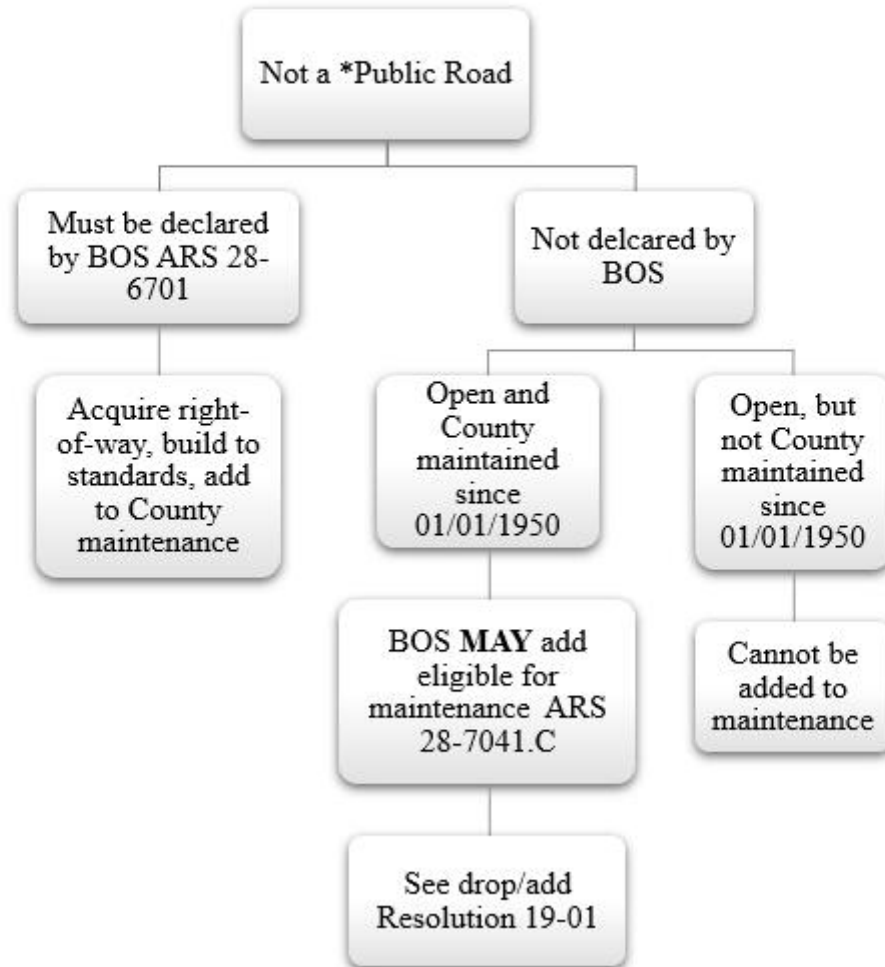
ROAD MAINTENANCE ELIGIBILITY



*Public Road= one that has been legally granted to the County or to the public, either in fee or as an easement



ROAD MAINTENANCE ELIGIBILITY



Add / Drop Dirt Road from Maintenance

Highlights of Resolution 19-01

- Drop Road Considerations
 - ADT (Average Daily Traffic) less than 20
 - Encroachments
 - Opinion of the users of the road
- Add Road Minimum Requirements
 - Public right-of-way greater than 50 feet
 - Constructed prior to June 13, 1990
 - Contiguous to a County maintained road
 - ADT greater than 100



COCHISE COUNTY

Road Districts A.R.S. Title 48

- Road Improvement District (RID)
 - Residents responsible for cost of design and construction to improve public roads to a paved County Standards
 - County then assumes maintenance of road
- Road Improvement and Maintenance District (RIMD)
 - Residents improve road to a standard that is less than County Standard
 - District is responsible for maintenance
 - Local elected governing board of residents in the district
 - District funds, additional property tax
 - RIMD in County
 - Fairfield Estates
 - High Knoll Ranches

