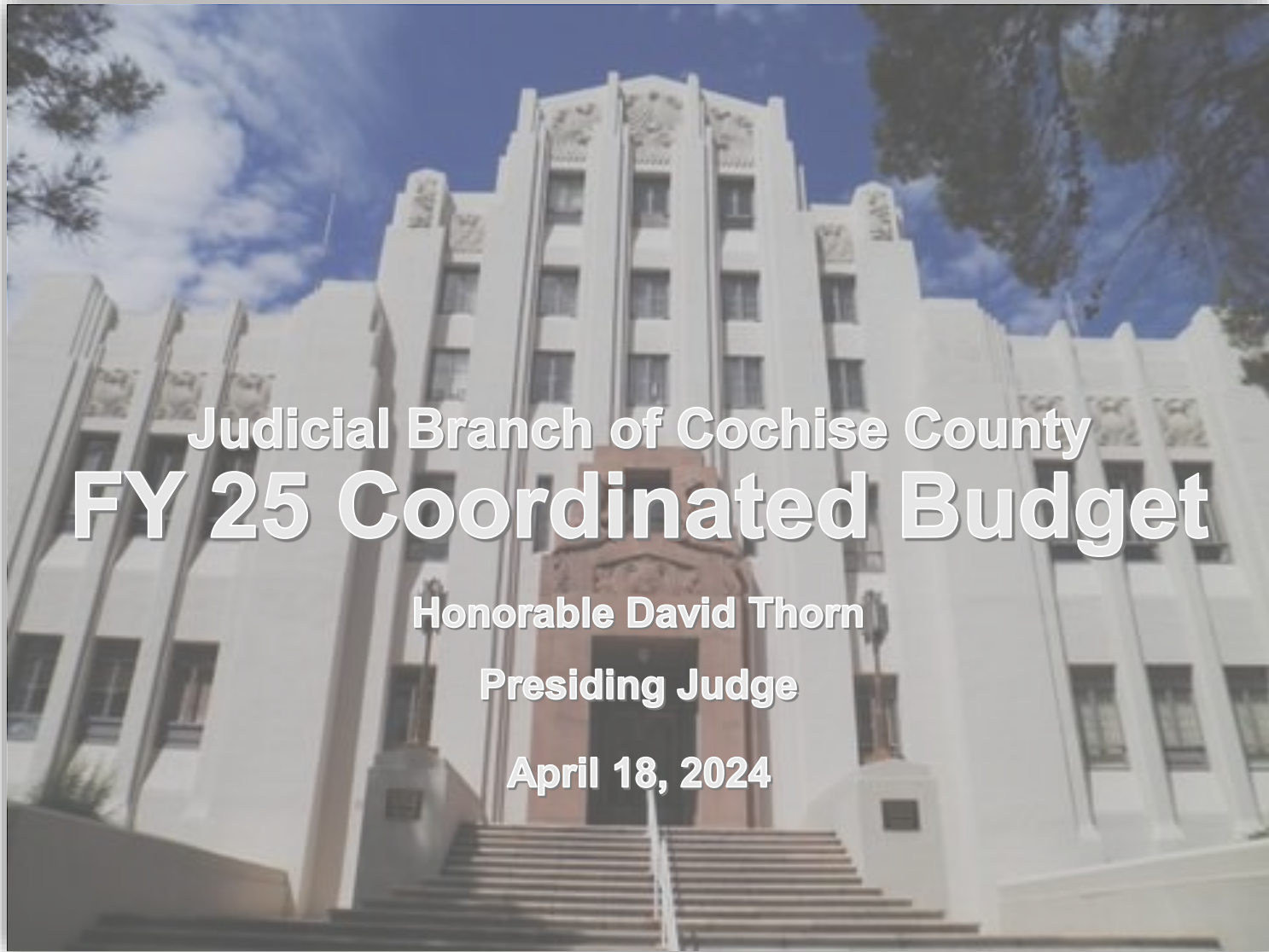


# JUDICIAL BRANCH



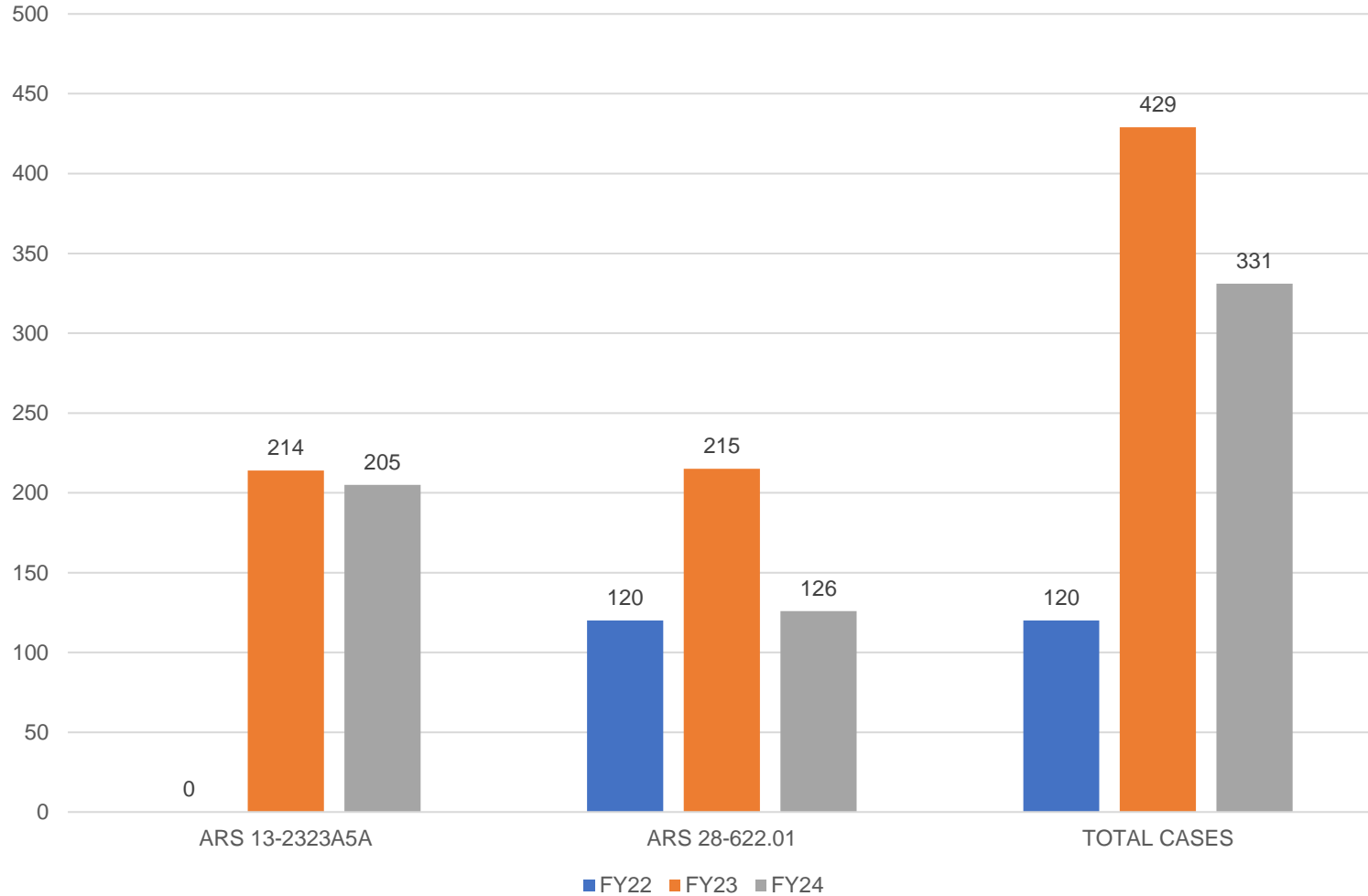
*Serving with Pride and Integrity*



*Public Program... Personal Service*

# JUDICIAL BRANCH

## Cochise County Justice Courts Human Smuggling & Unlawful Flight Cases



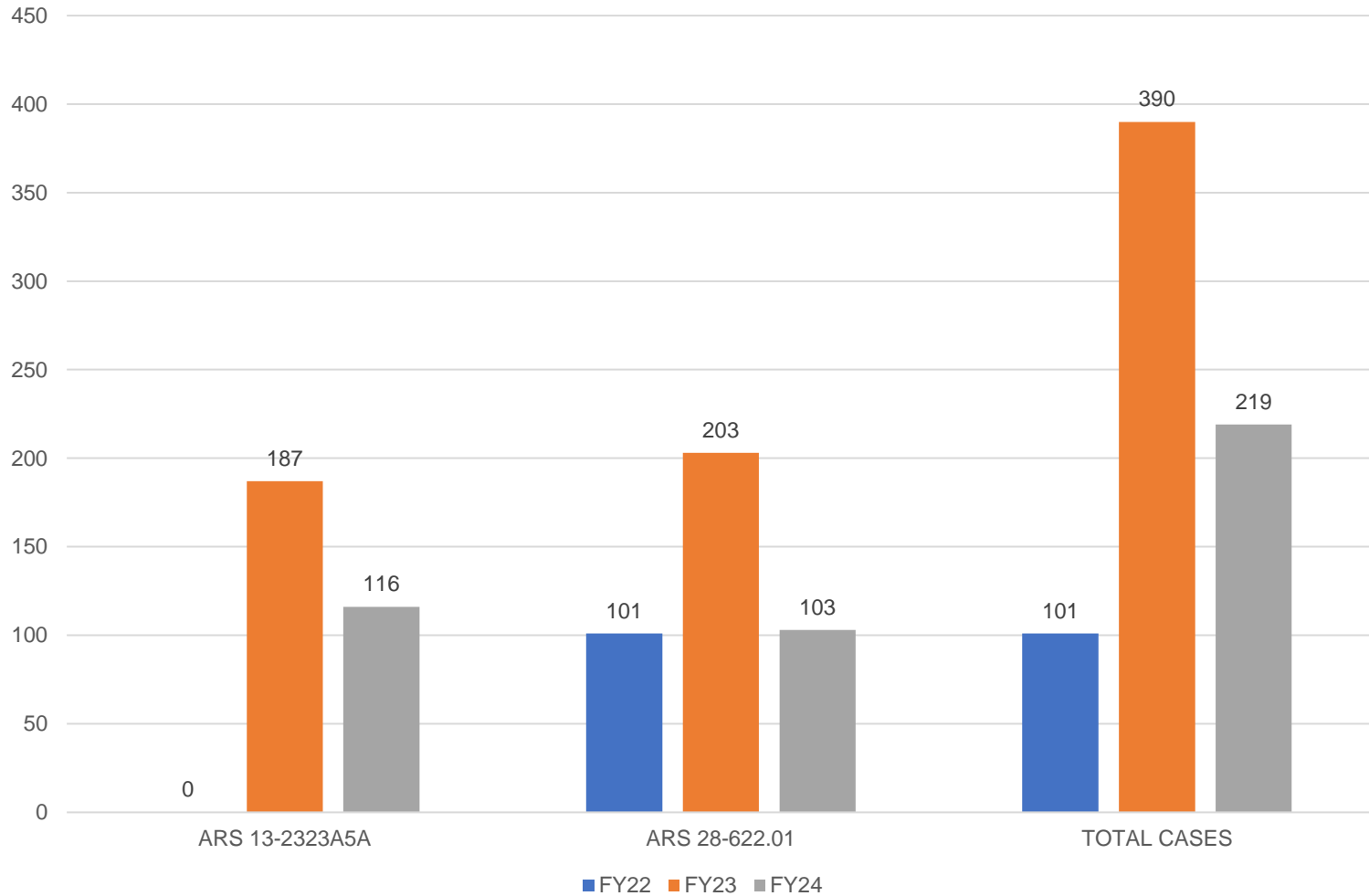
*Serving with Pride and Integrity*



*Public Program... Personal Service*

# JUDICIAL BRANCH

## Cochise County Superior Court Human Smuggling and Unlawful Flight Cases

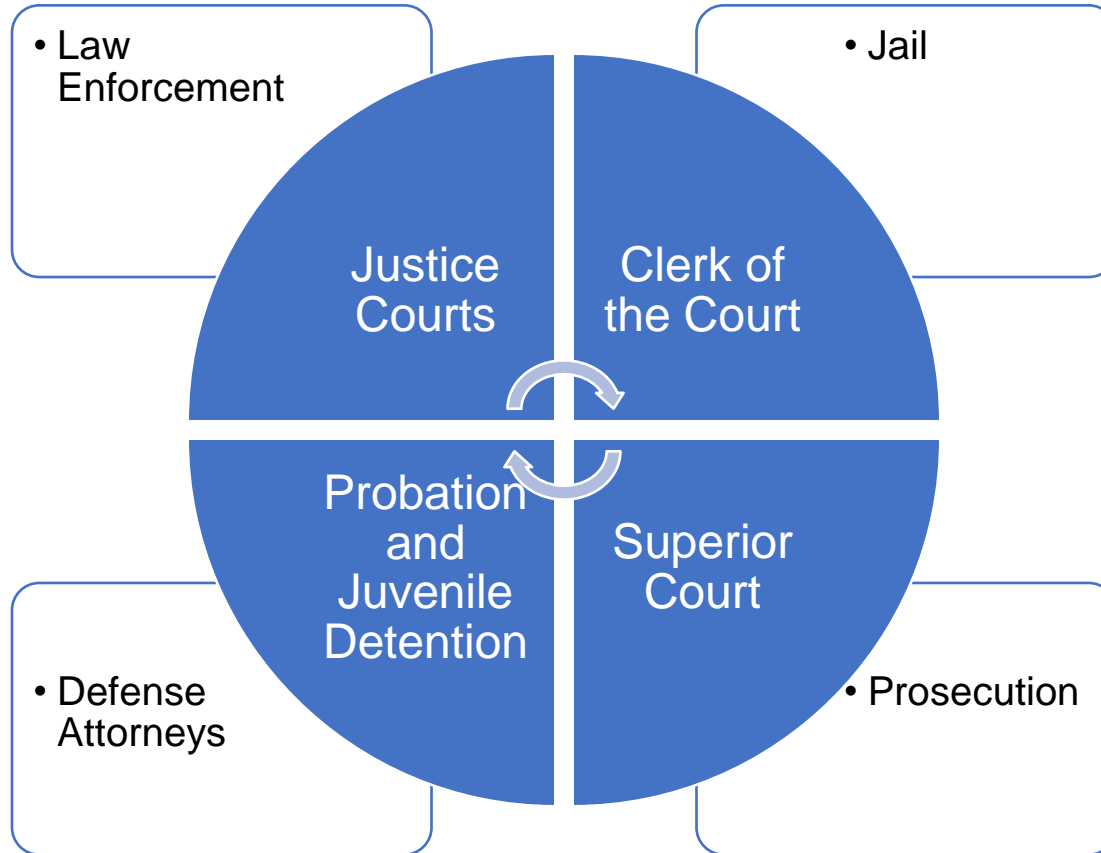


*Serving with Pride and Integrity*



*Public Program... Personal Service*

# Cochise County – Judicial Branch



# JUSTICE COURTS

---

**Honorable Janus Poppe**  
Associate Presiding Judge

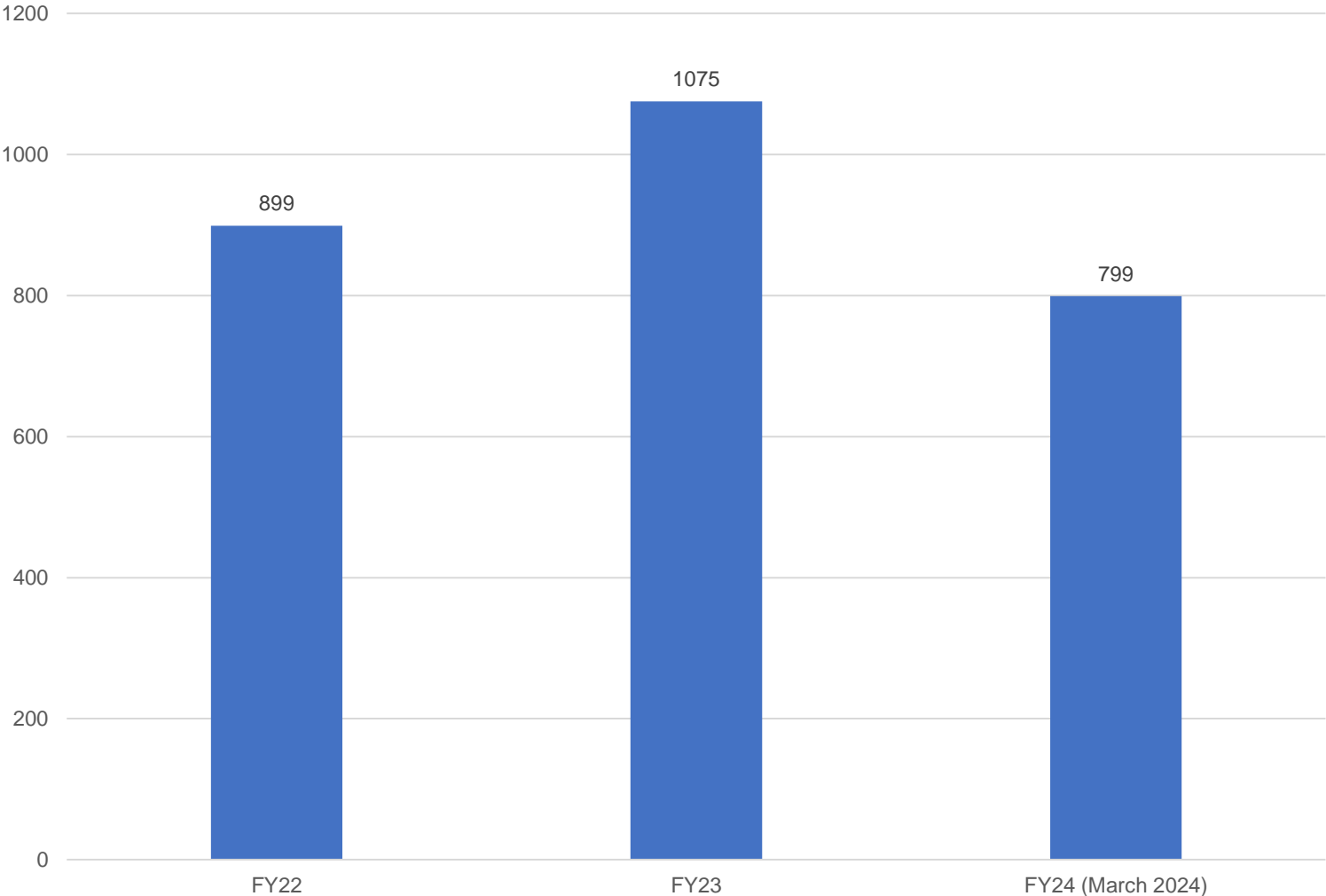


*Serving with Pride and Integrity*



*Public Program... Personal Service*

# Initial Appearances Justices of the Peace Pro Tems



*Serving with Pride and Integrity*



*Public Program... Personal Service*



# CLERK OF THE SUPERIOR COURT

---

Honorable Amy Hunley



*Serving with Pride and Integrity*



*Public Program... Personal Service*

Official Court Record Keeper  
Court Financial Officer  
Jury Commissioner  
Probate Registrar

- Criminal Felony Cases
- Family Law (divorce, legal separation, annulment, paternity, child support)
- Civil Cases (property disputes, personal damages, name change, etc.)
- Probate (guardianship, conservatorship, wills, estates)
- Protective Orders
- Juvenile Dependency, Termination of Parental Rights, Adoption Cases
- Juvenile Delinquency

- Collecting and Disbursing Fees, Fines, & Victim Restitution
- Produce Minutes of all Court Proceedings
- Issuing Marriage Licenses
- Passport Application Agents
- Process Server Applications
- Processing Appeals from Superior Court, Justice Courts, and Municipal Courts

- Provide information regarding Court Records to the public
- Handle media requests for information
- Summon Jurors for all Trials, and for the State and local Grand Jury



# SUPERIOR COURT

---

**Mr. Robert “Bobby” Coronado**  
Court Security Chief

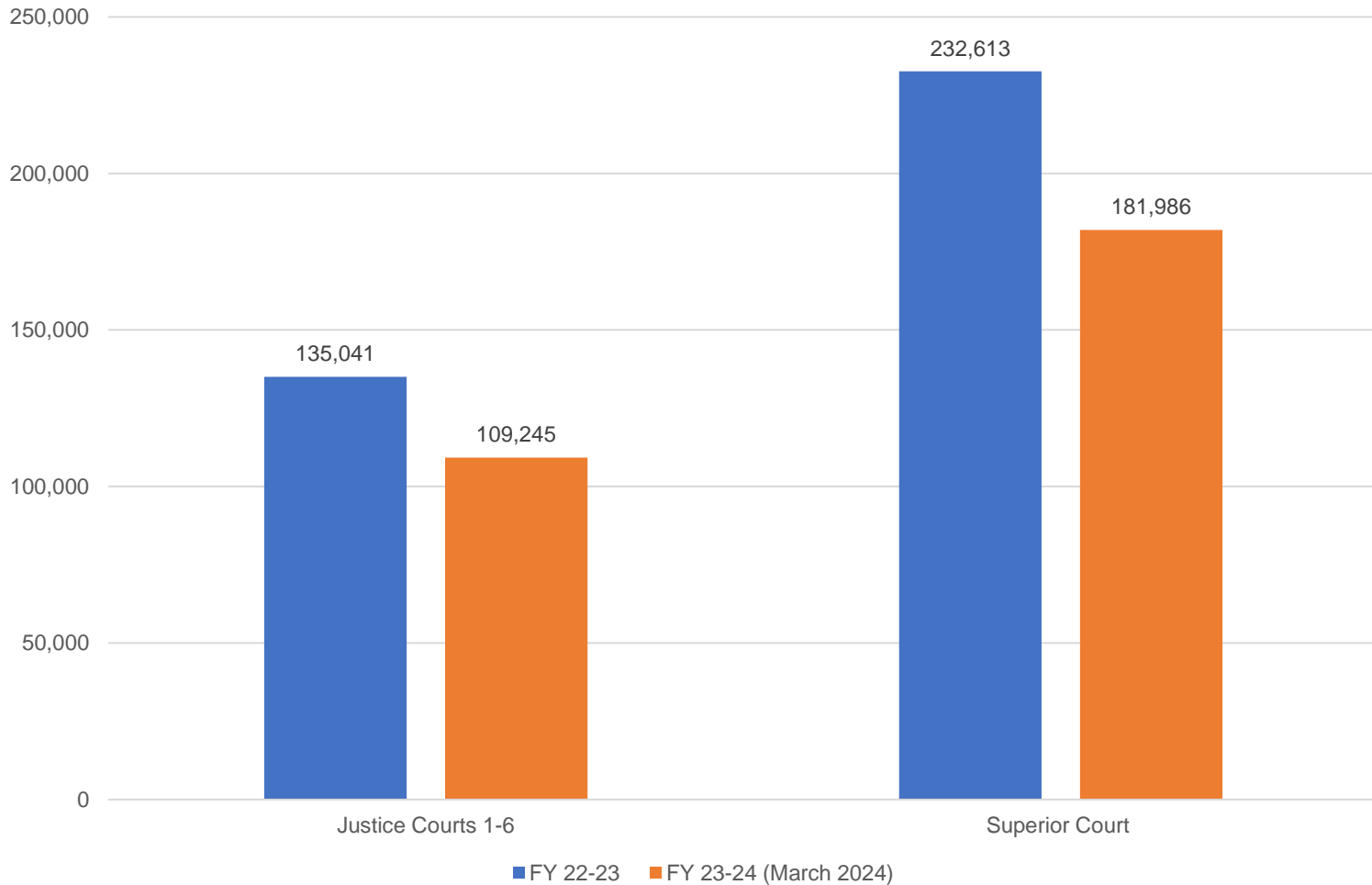


*Serving with Pride and Integrity*



*Public Program... Personal Service*

## Public Entering Court Facilities

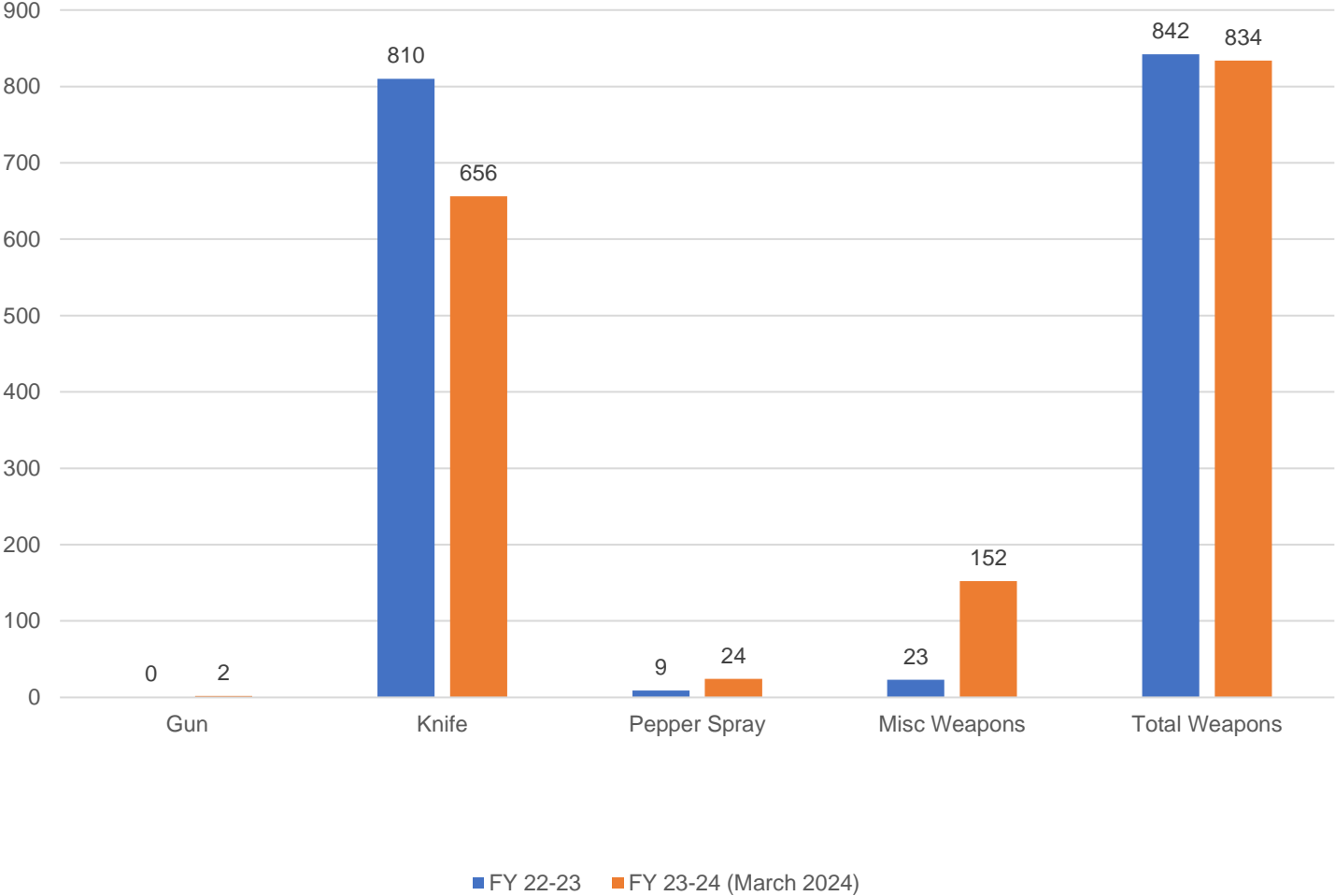


*Serving with Pride and Integrity*

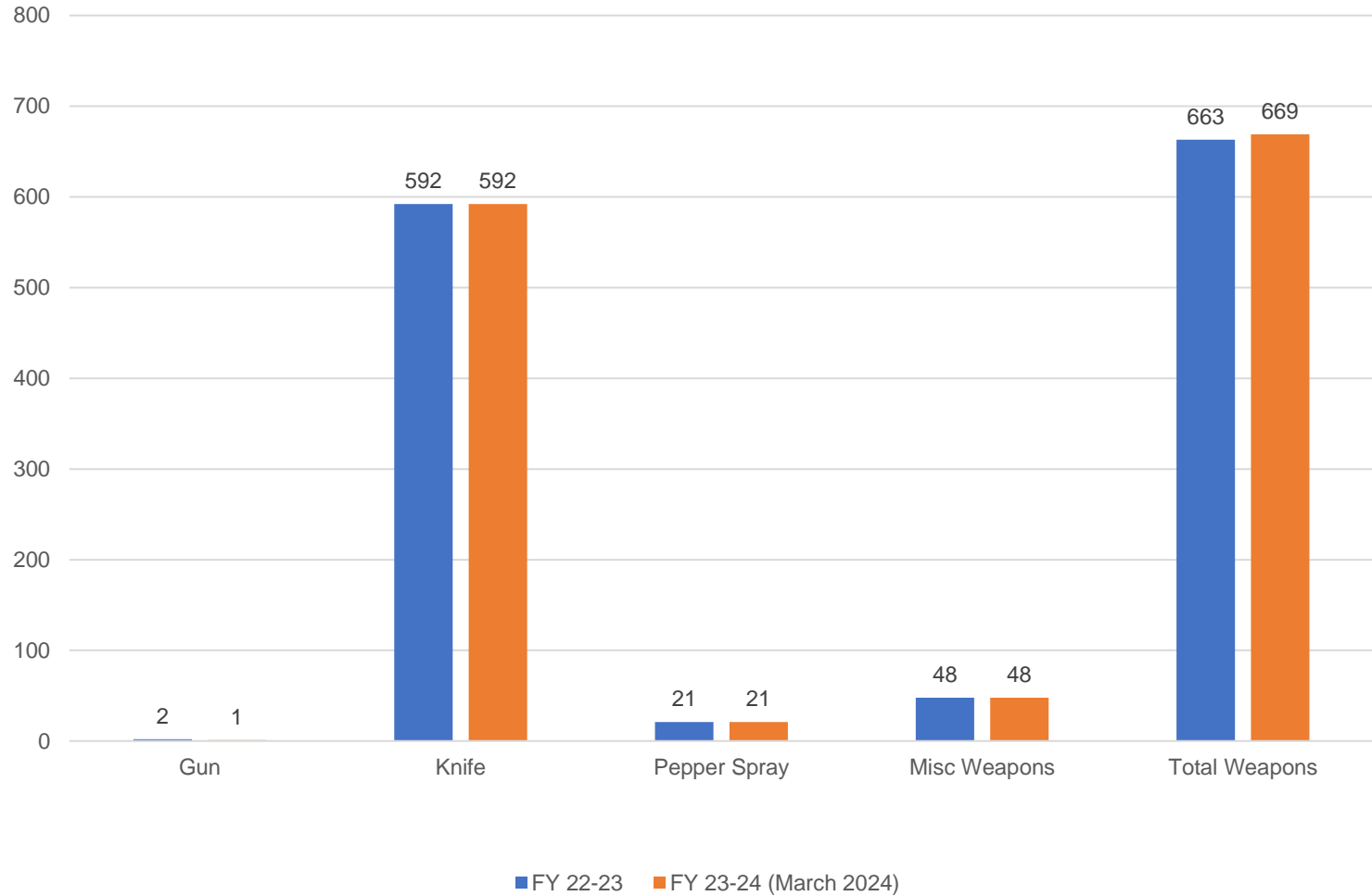


*Public Program... Personal Service*

# Weapons Seizures from Justice Courts 1-6



## Weapons Seizures from Superior Court Buildings



*Serving with Pride and Integrity*

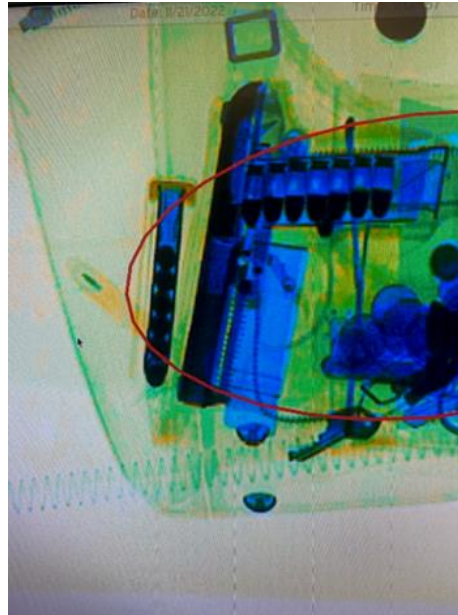


*Public Program... Personal Service*

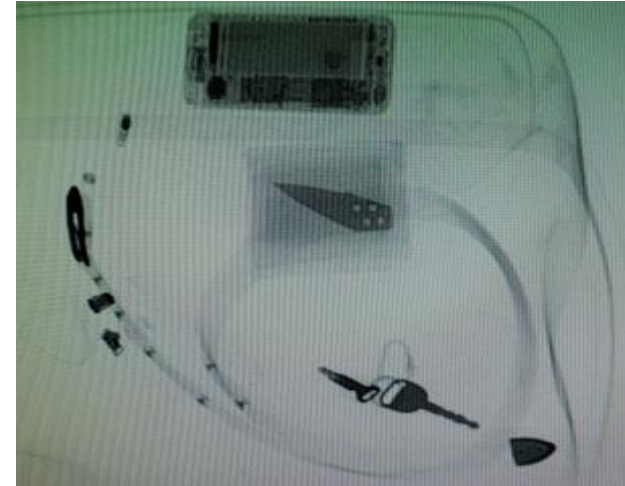
# COURT SECURITY WEAPON SEIZURES



Gun located in purse



Fully-loaded gun  
with additional  
magazine



Knife located in wallet



Knife located in wallet

*Serving with Pride and Integrity*



Knife disguised as comb

*Public Program... Personal Service*



# PROBATION & JUVENILE DETENTION

---

**Honorable Terry Bannon**

Juvenile Presiding Judge

**Mr. Armando Arias**

Adult Probation Deputy Chief

**Ms. Sarah Graves**

Juvenile Probation Deputy Chief



*Serving with Pride and Integrity*

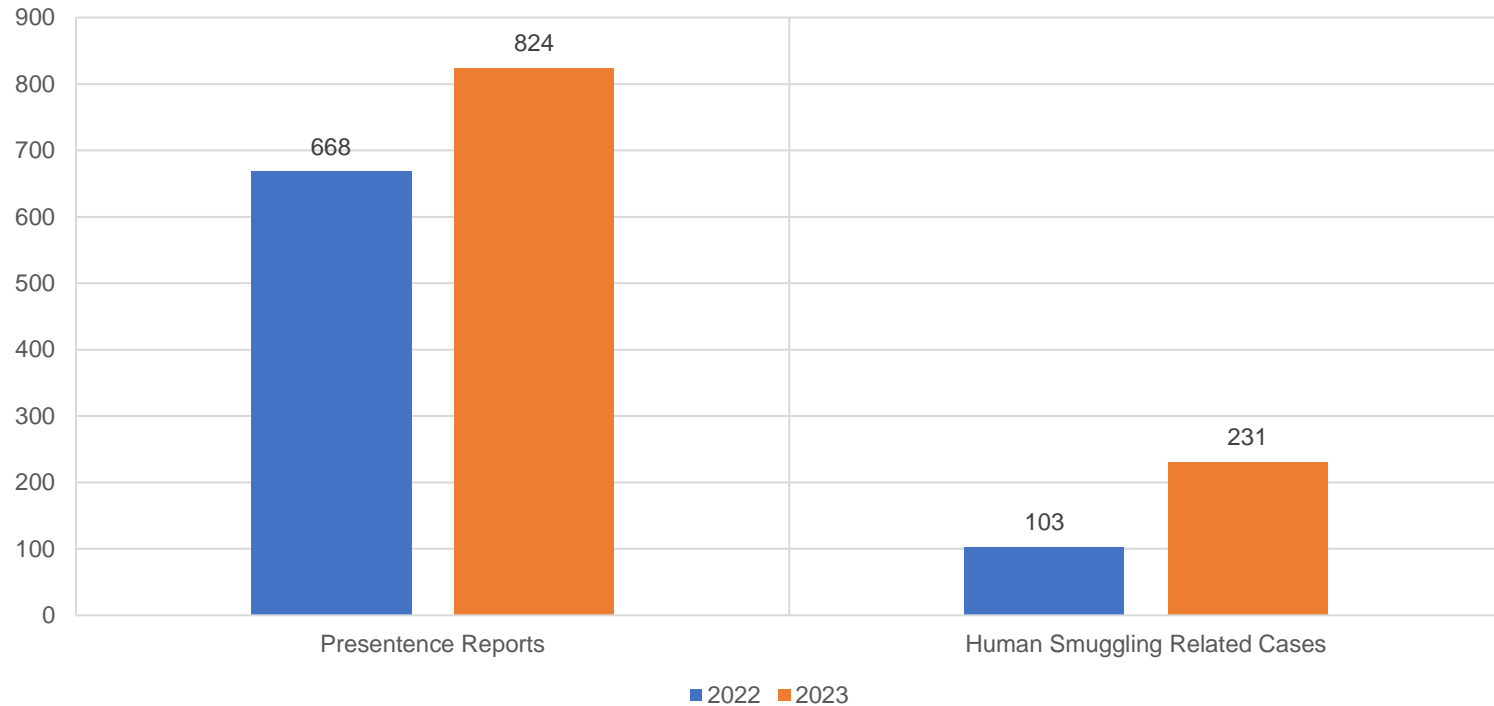


*Public Program... Personal Service*

# JUDICIAL BRANCH

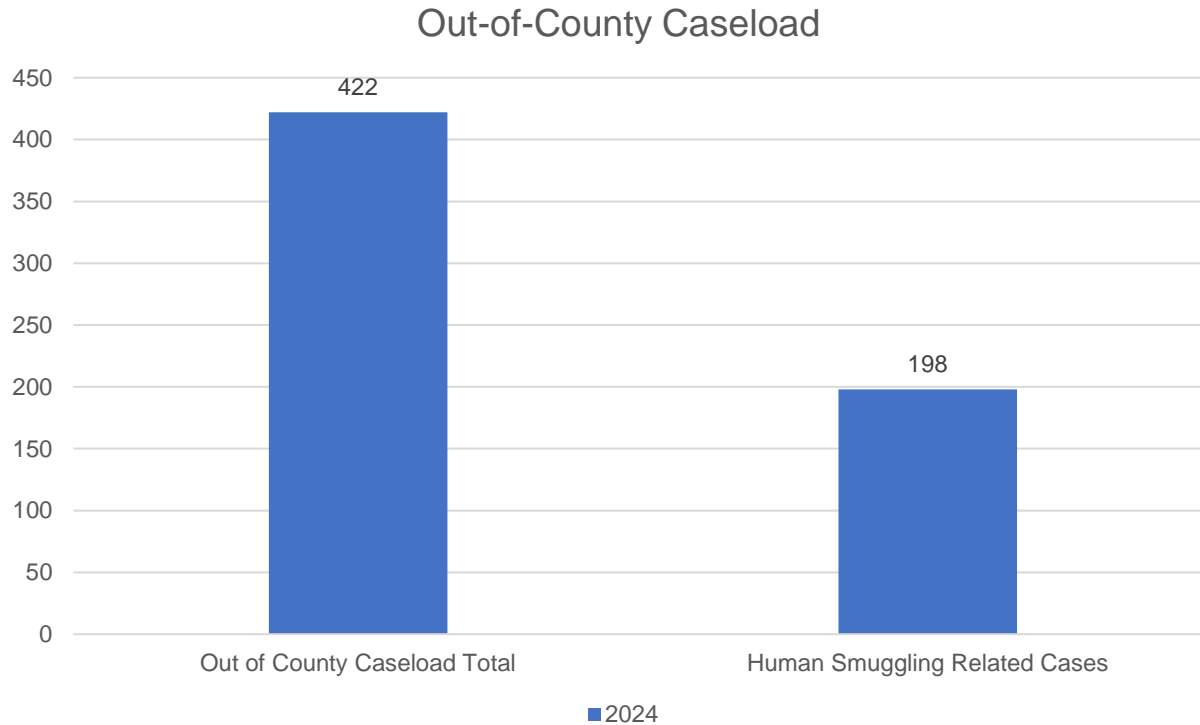
## PRESENTENCE INVESTIGATIONS (PSI)

Presentence Investigation Reports

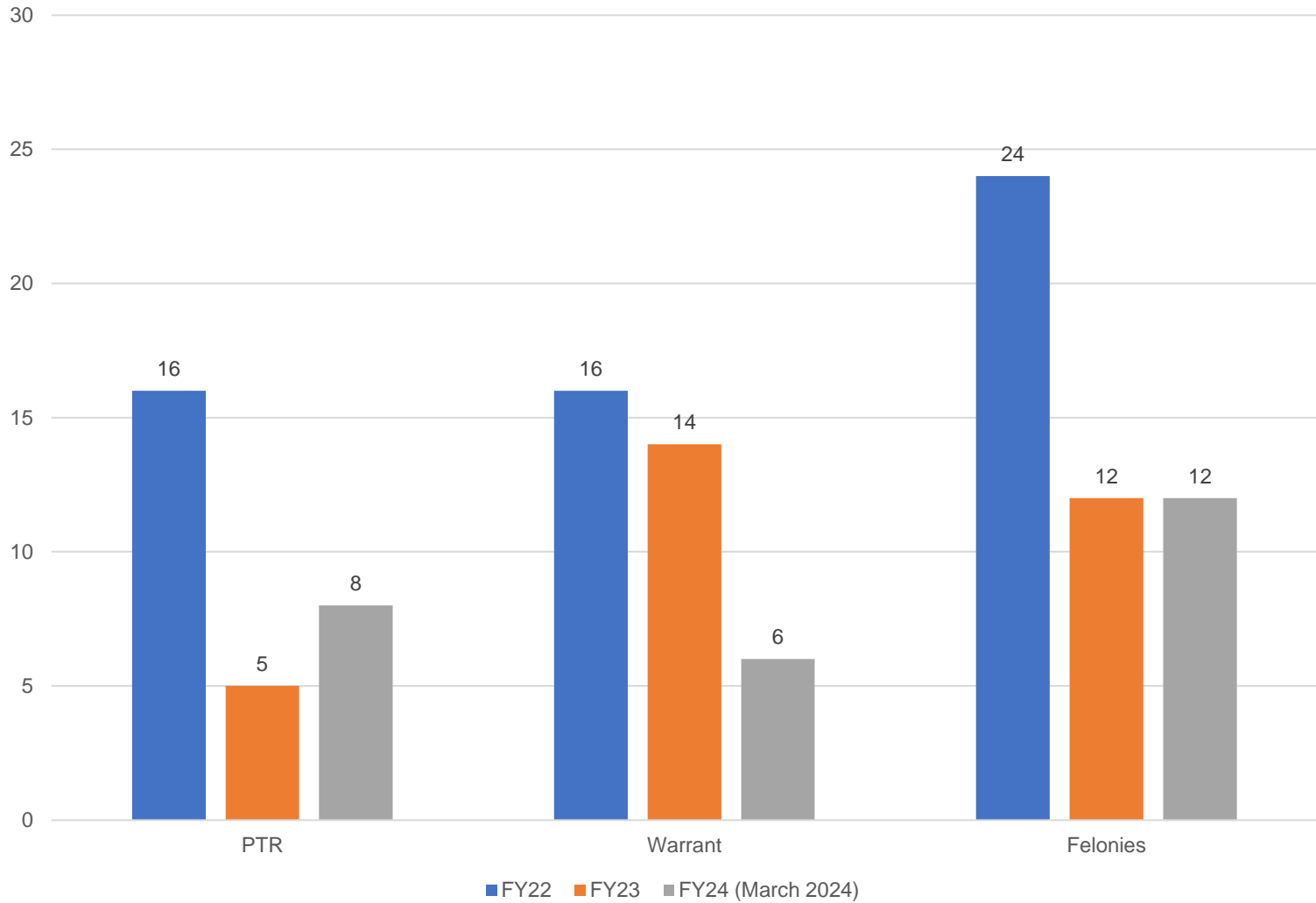


# JUDICIAL BRANCH

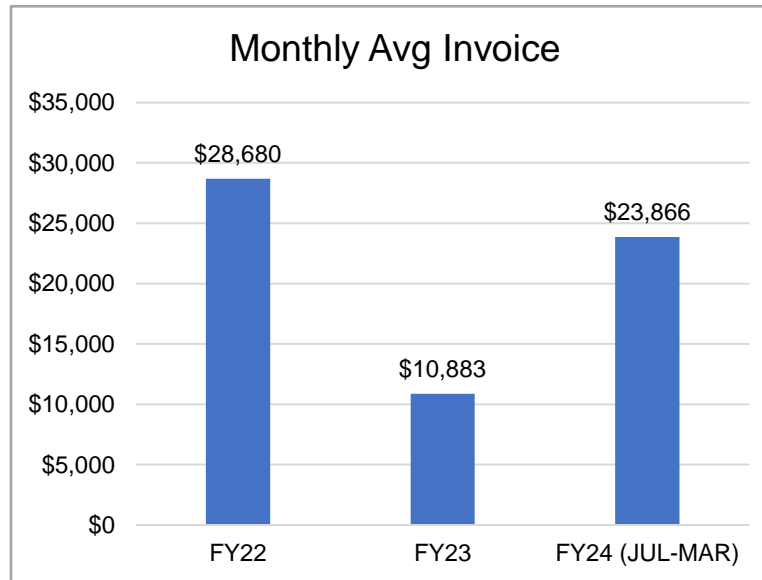
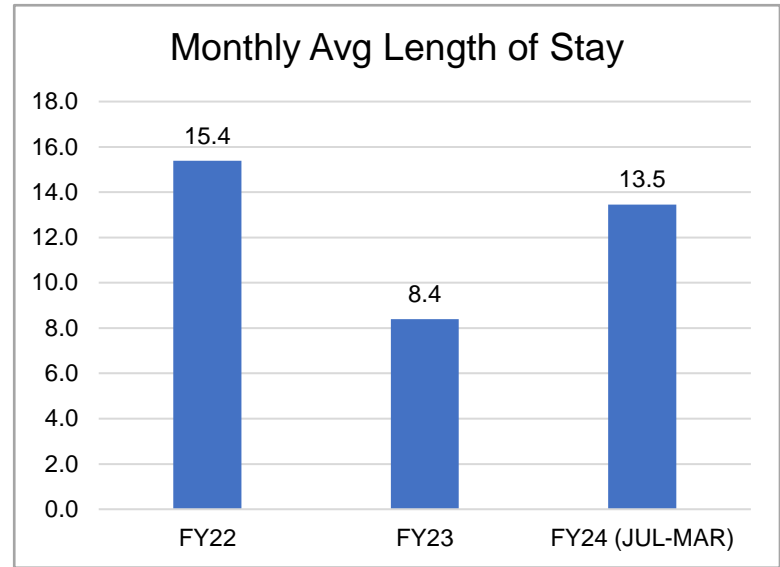
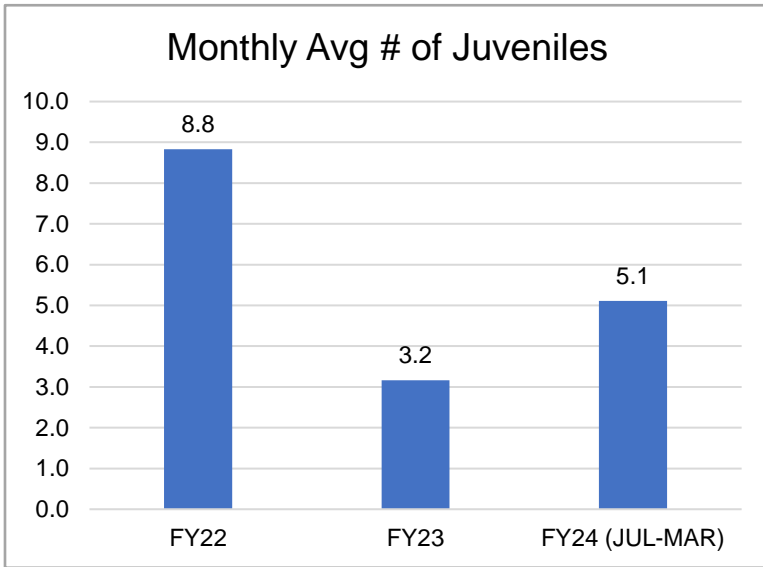
## OUT-OF-COUNTY CASELOAD (MARCH 2024)



# Detention Reasons



# JUVENILE DETENTION, SCREENING, AND TRANSPORT (DST)



*Serving with Pride and Integrity*



*Public Program... Personal Service*

# FUNDING REQUESTS

---

**Ms. Rita Shipley**  
Budget & Finance Director, Superior Court



*Serving with Pride and Integrity*



*Public Program... Personal Service*

## JUDICIAL BRANCH

# FUNDING REQUESTS

- \$45,000 – Justice of the Peace Pro Tempore Judges
- \$267,000 – Clerk of the Court, Compensation Study and Increase
- \$112,271 – Support Staff Salary Increase
- \$0 – Probation and Detention, FY26 Salary Survey as Market Source
- \$51,000 – Clerk and Court Admin, Add 1.0 FTE from Special Revenue Funds
- \$47,325 – Benson Justice Court, Add 1.0 FTE
- \$47,325 – Willcox Justice Court, Add 1.0 FTE
- \$47,325 – Bowie Justice, Add 1.0 FTE
- \$127,834 – Sierra Vista Justice Court, Paint and Carpet (Building Enhancement Fund)
  
- \$566,246 GF Personnel
- \$127,834 GF Building Enhancement
- \$694,080



# QUESTIONS

*Serving with Pride and Integrity*



*Public Program... Personal Service*