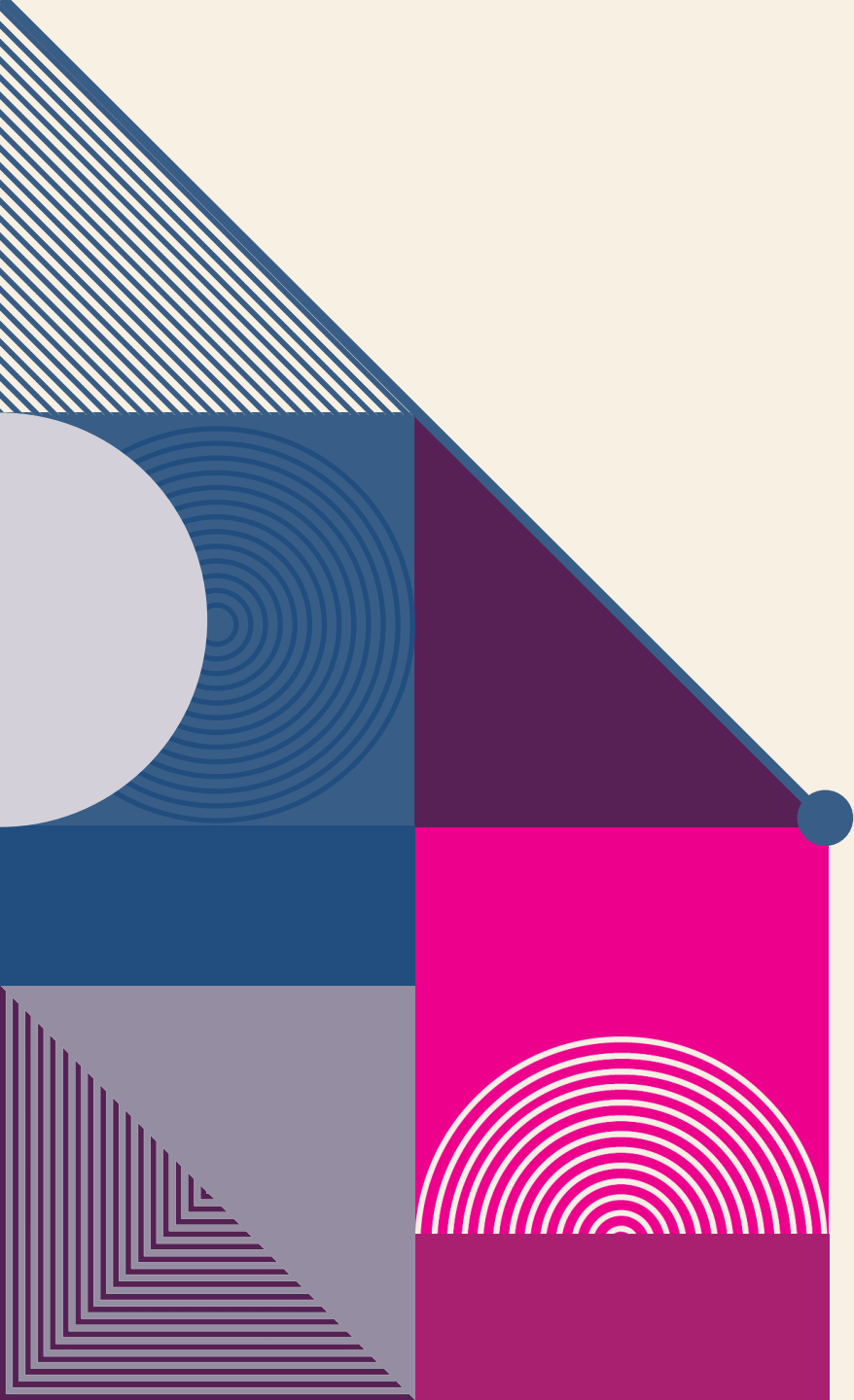


**PURCHASE OF
TAILTOPIA BUILDING
TO SERVE AS COCHISE
COUNTY ANIMAL CARE
FACILITY**



AGENDA

Overview

Safety and Security

Maintenance and Management

Natural Light and Fresh Air

Disease and Noise Control

Foster Adoptions

Final Tips and Take Away



SALE PRICE \$1.5 MILLION

CENTRALLY LOCATED IN THE COUNTY

2.29 ACRES, ROOM TO EXPAND

5,700 COVERED SQUARE FEET

TURN KEY

FULLY EQUIPPED AND FUNCTIONAL

CAN START OPERATIONS IMMEDIATELY

SAFETY AND SECURITY

Camera System throughout the facility that can be monitored remotely

Sally ports at all the entrance and exits

Temperature control system that can be monitored remotely

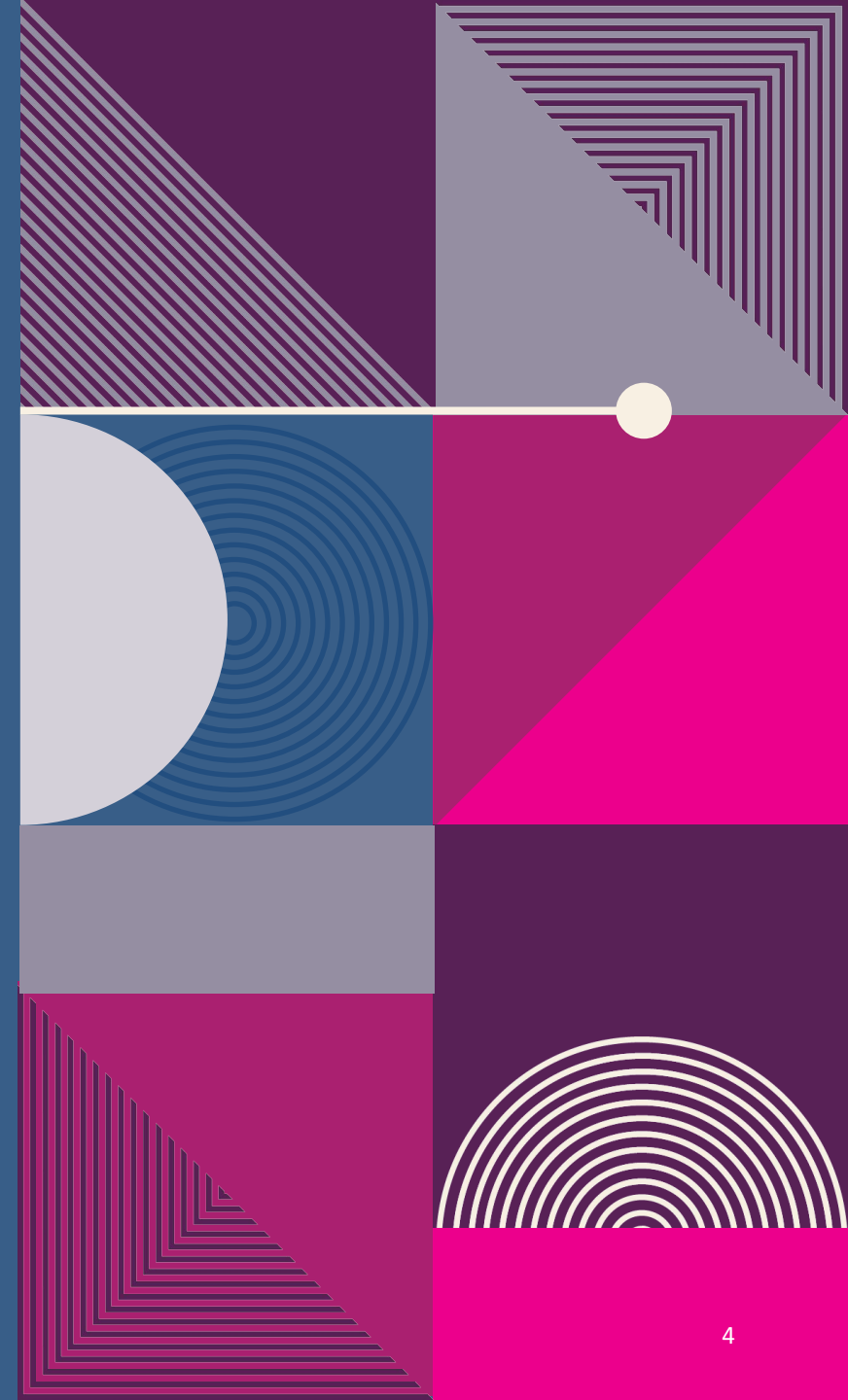
Privacy screen on all fencing

8-Foot-tall perimeter fencing

Safety door to all kennels that ensure no one can be locked inside with a dangerous animal

Solid front kennel doors to prevent a barrier of protection for both animals and humans

Kennels are designed to reduce stress while allowing viewing of the animals





MAINTENANCE AND MANAGEMENT

Facility is 7 years old

Well Maintained

One of the 2 AC units was replaced last than a year ago

Metal exterior and roof for low upkeep

Current owner has offered to stay on for short time to help manage if needed and to help create policies and procedures

Location will allow for maximum use of volunteers and community outreach and or educational programs

NATURAL LIGHT AND FRESH AIR

This facility was designed for the animals needs in mind. There are multiple skylights throughout the building to allow for natural sunlight.

The facility was designed to allow maximum airflow. The more fresh air that can be moved through the facility reduces the chance of upper respiratory infections. The facility has multiple doors to allow for airflow, and each kennel has their own doggy door to the outside



DISEASE AND NOISE CONTROL

- Separate ventilation system for quarantine and current grooming room that can be converted into a medical suite
- Professional cleaning supplies and equipment already on site
- Designed to keep diseases controlled within the facility

Noise control

Dogs can not see each other

Play yards all have covering to limit dog interaction and stimulation

Less stress=less barking

Aromatherapy and music in the kennels to reduce stress

Dogs located on the commercial side of the building away from homes



ADOPTIONS

- Location, location, location
- Ability for more foot traffic to increase adoption and helping stray dogs find their owners
- Location allows for more volunteers
- Lots of safe spaces to walk dogs
- Lots of exercise and stimulation areas= increase in adoption rate
- Elevated Kurunda dog cots and automatic water for ease of use and comfort for animals.
- Privacy panel for the shy dogs
- Cat area separate from dogs to keep stress down
- Happy pets+happy citizens=increased adoptions
- Grooming room already set up to give the dogs a nice clean appearance and increase adoption rate

CURRENT RATE

- These numbers are from 2022
- There are currently hoarding situations in the county, and due to lack of shelter space the animals cannot be removed
- Citizens calling about stray dogs are told to let them loose due to lack of space to house them
- The ACOs need the support of the county and a safe spaces to bring the animals they try to save
- Adoptions reduces compassion fatigue and keeps staff longer

2022	
Dogs	Cats
308 intake	12 intake
83 euthanized	2 euthanized

CHALLENGES

Dirt road is private and would need to be maintained

Lack of signage on main road unless city will allow sign placement on Hwy 92

No grant money for medical center unless the UDSA would allow the clinic to be built on the Tailtopia site located in county limits.

COMPARISON

- **TailTopia**
- 1.5 M
- Can Save lives starting today
- 24 adoption kennels plus quarantine
- Fully equipped
- 8 cat condos
- Smaller surgical center can be created in the grooming room in the building or added on where more of the population will use it
- CCSO can run this facility and can utilize a mobile vet for spay and neuters similar to SV AC



FINAL TIPS & TAKEAWAYS

Could easily operate today as a county animal shelter

More space with less cost than the Bisbee location

Can start saving more lives today

Less stress on the ACO which in return will keep them longer

Room for expansion

Ability to have IGO with the rest of the county

Most strategic investment for short and long term goals of the county

The background features a diagonal line from the top-left to the bottom-right. The area above and to the left of this line is divided into several geometric sections: a dark purple triangle at the top-left containing a white dot; a blue square with concentric circles; a light grey semi-circle; a pink triangle with diagonal lines; a pink square with a white corner and concentric lines; a blue square; a grey triangle; a dark purple triangle; a pink triangle; and a bright pink square at the bottom-left. The area below and to the right of the diagonal line is a solid blue background.

THANK YOU