

Arizona Environmental Online Review Tool Report



*Arizona Game and Fish Department Mission
To conserve Arizona's diverse wildlife resources and
manage for safe, compatible outdoor recreation
opportunities for current and future generations.*

The Department requests further coordination to provide project/species specific recommendations. Please use the [Project Evaluation Form](#) to submit your project to the Project Evaluation Program at PEP@azgfd.gov.

Project Name:

Storage facility for new commercial port of entry near Douglas

Project Type:

Development Outside Municipalities (Rural Development), Commercial/industrial (mall) and associated infrastructure, New construction or expansion

Project ID:

HGIS-24839

Project Description:

Proposed development of warehouse and storage facilities to support the new commercial Port of Entry near Douglas. The facility would be constructed on 369 acres of undeveloped land.

Contact Person:

Katherine Matthiesen

Organization:

Arizona Game and Fish Department

On Behalf Of:

AZGFD

Disclaimer:

1. This Environmental Review is based on the project study area that was entered. The report must be updated if the project study area, location, or the type of project changes.
2. This is a preliminary environmental screening tool. It is not a substitute for the potential knowledge gained by having a biologist conduct a field survey of the project area. This review is also not intended to replace environmental consultation (including federal consultation under the Endangered Species Act), land use permitting, or the Departments review of site-specific projects.
3. The Departments Heritage Data Management System (HDMS) data is not intended to include potential distribution of special status species. Arizona is large and diverse with plants, animals, and environmental conditions that are ever changing. Consequently, many areas may contain species that biologists do not know about or species previously noted in a particular area may no longer occur there. HDMS data contains information about species occurrences that have actually been reported to the Department. Not all of Arizona has been surveyed for special status species, and surveys that have been conducted have varied greatly in scope and intensity. Such surveys may reveal previously undocumented population of species of special concern.
4. Arizona Wildlife Conservation Strategy (AWCS), specifically Species of Greatest Conservation Need (SGCN), represent potential species distribution models for the State of Arizona which are subject to ongoing change, modification and refinement. The status of a wildlife resource can change quickly, and the availability of new data will necessitate a refined assessment.

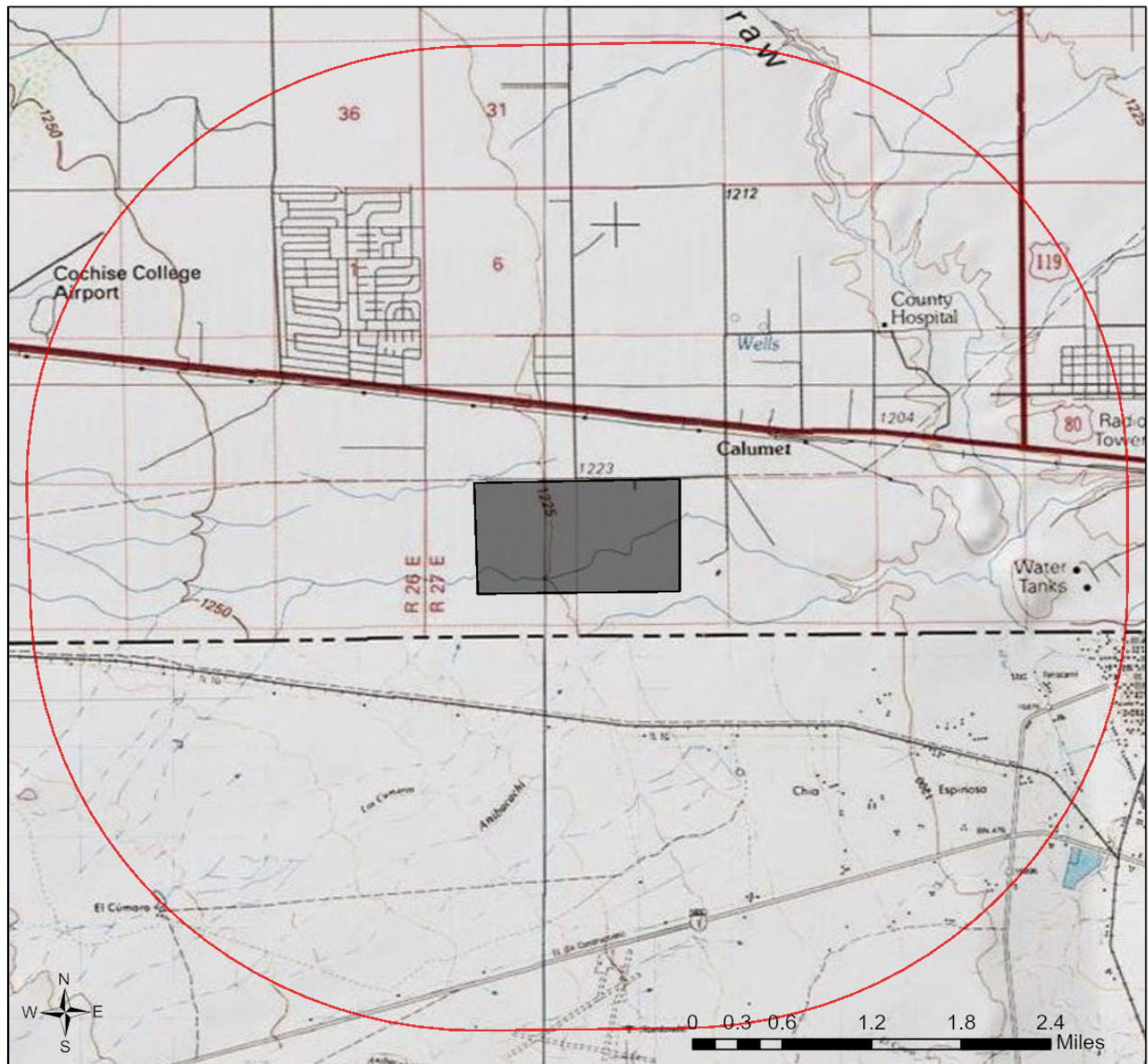
Locations Accuracy Disclaimer:

Project locations are assumed to be both precise and accurate for the purposes of environmental review. The creator/owner of the Project Review Report is solely responsible for the project location and thus the correctness of the Project Review Report content.

Recommendations Disclaimer:

1. The Department is interested in the conservation of all fish and wildlife resources, including those species listed in this report and those that may have not been documented within the project vicinity as well as other game and nongame wildlife.
2. Recommendations have been made by the Department, under authority of Arizona Revised Statutes Title 5 (Amusements and Sports), 17 (Game and Fish), and 28 (Transportation).
3. Potential impacts to fish and wildlife resources may be minimized or avoided by the recommendations generated from information submitted for your proposed project. These recommendations are preliminary in scope, designed to provide early considerations on all species of wildlife.
4. Making this information directly available does not substitute for the Department's review of project proposals, and should not decrease our opportunity to review and evaluate additional project information and/or new project proposals.
5. Further coordination with the Department requires the submittal of this Environmental Review Report with a cover letter and project plans or documentation that includes project narrative, acreage to be impacted, how construction or project activity(s) are to be accomplished, and project locality information (including site map). Once AGFD had received the information, please allow 30 days for completion of project reviews. Send requests to:
Project Evaluation Program, Habitat Branch
Arizona Game and Fish Department
5000 West Carefree Highway
Phoenix, Arizona 85086-5000
Phone Number: (623) 236-7600
Fax Number: (623) 236-7366
Or
PEP@azgfd.gov
6. Coordination may also be necessary under the National Environmental Policy Act (NEPA) and/or Endangered Species Act (ESA). Site specific recommendations may be proposed during further NEPA/ESA analysis or through coordination with affected agencies.

Storage facility for new commercial port of entry near Douglas USA Topo Basemap With Locator Map



- Buffered Project Boundary
- Project Boundary

Project Size (acres): 671.72

Lat/Long (DD): 31.3439 / -109.6300

County(s): Cochise

AGFD Region(s): Tucson

Township/Range(s): T24S, R27E

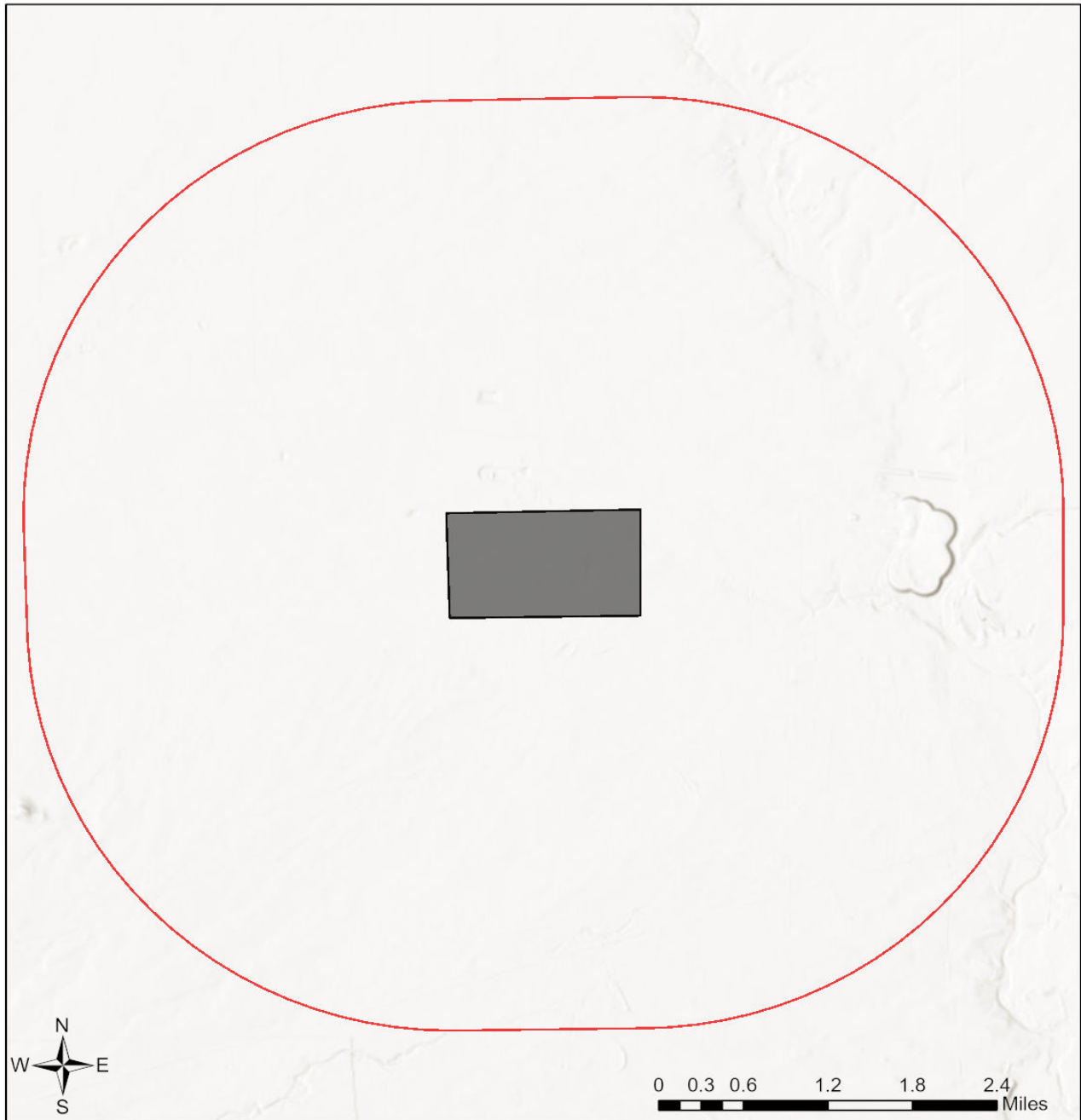
USGS Quad(s): DOUGLAS; PAUL SPUR



County of Yavapai, Esri, TomTom, Garmin, FAO, NOAA, USGS, EPA, USFWS
Copyright:© 2013 National Geographic Society, i-cubed
Esri, USGS



Storage facility for new commercial port of entry near Douglas

Web Map As Submitted By User

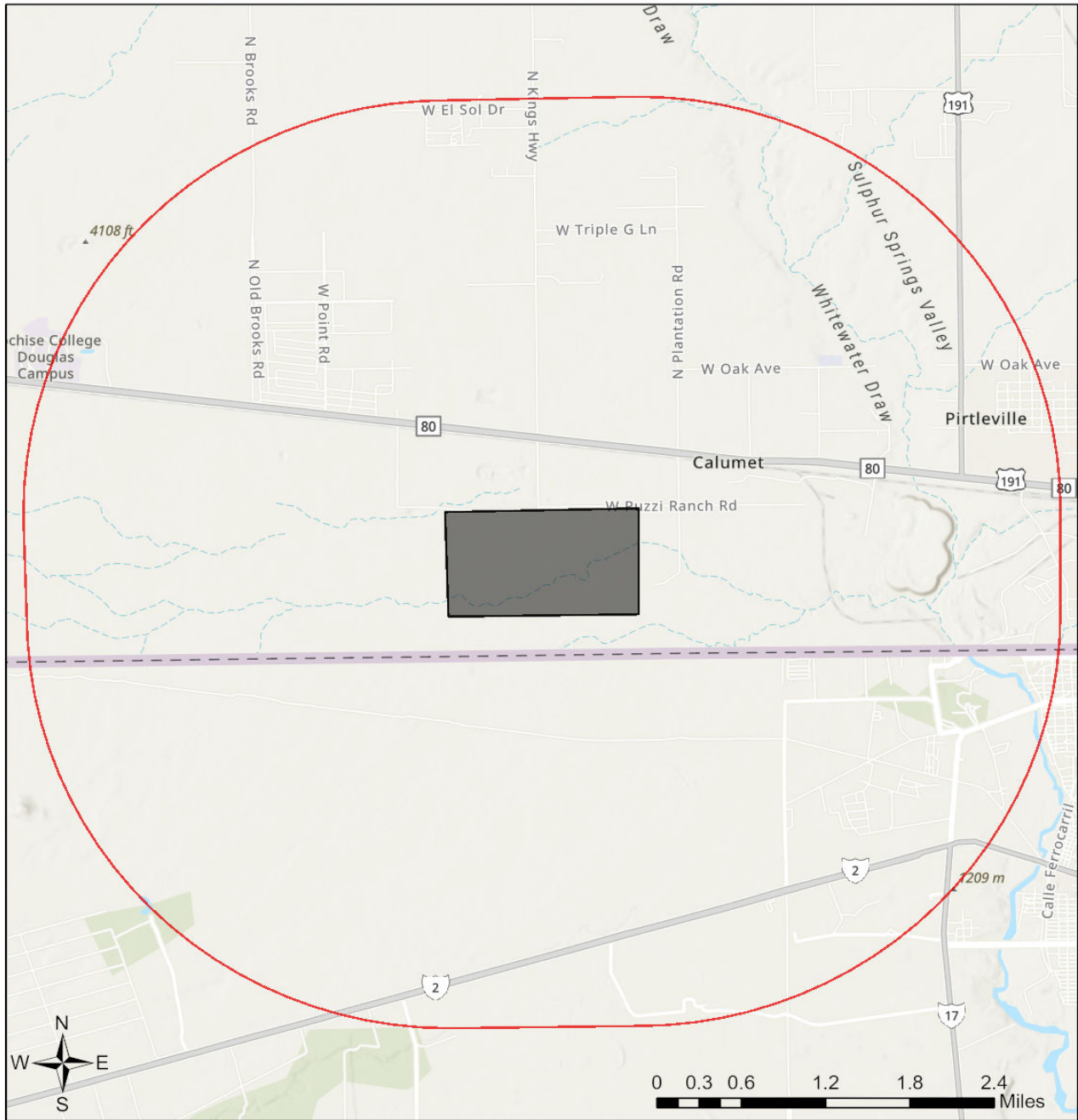


-  Buffered Project Boundary
-  Project Boundary

Project Size (acres): 671.72
Lat/Long (DD): 31.3439 / -109.6300
County(s): Cochise
AGFD Region(s): Tucson
Township/Range(s): T24S, R27E
USGS Quad(s): DOUGLAS; PAUL SPUR

Esri, NASA, NGA, USGS, FEMA

Storage facility for new commercial port of entry near Douglas Important Areas

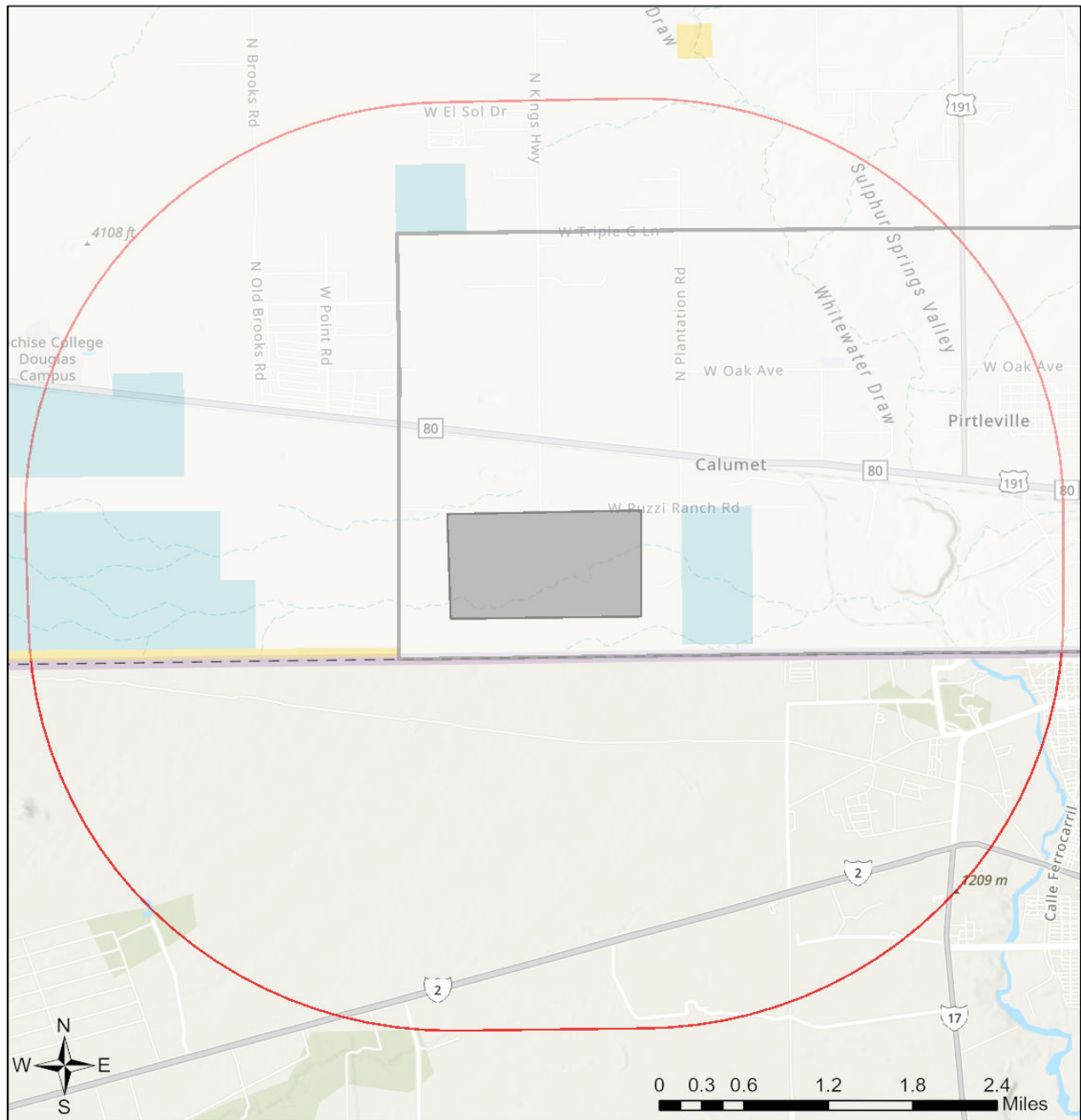


- Buffered Project Boundary
- Project Boundary
- Important Bird Areas
- Critical Habitat
- Pinal County Riparian
- Wildlife Connectivity

Project Size (acres): 671.72
 Lat/Long (DD): 31.3439 / -109.6300
 County(s): Cochise
 AGFD Region(s): Tucson
 Township/Range(s): T24S, R27E
 USGS Quad(s): DOUGLAS; PAUL SPUR

Esri, NASA, NGA, USGS, FEMA
 CONANP, Esri, TomTom, Garmin, SafeGraph, GeoTechnologies, Inc, METI/NASA, USGS, EPA,
 NPS, USDA, USFWS

Storage facility for new commercial port of entry near Douglas Township/Ranges and Land Ownership



- | | |
|---|--|
| Buffered Project Boundary | Mixed/Other |
| Project Boundary | National Park/Mon. |
| AZ Game & Fish Dept. | Private |
| BLM | State & Regional Parks |
| BOR | State Trust |
| Indian Res. | US Forest Service |
| Military | Wildlife Area/Refuge |
| | Township/Ranges |

Project Size (acres): 671.72
 Lat/Long (DD): 31.3439 / -109.6300
 County(s): Cochise
 AGFD Region(s): Tucson
 Township/Range(s): T24S, R27E
 USGS Quad(s): DOUGLAS; PAUL SPUR

Esri, NASA, NGA, USGS, FEMA
 CONANP, Esri, TomTom, Garmin, SafeGraph, GeoTechnologies, Inc, METI/NASA, USGS, EPA,
 NPS, USDA, USFWS

Special Status Species Documented within 3 Miles of Project Vicinity

Scientific Name	Common Name	FWS	USFS	BLM	NPL	SGCN
Buteo swainsoni	Swainson's Hawk					2
Danaus plexippus	Monarch	C, PT		S		
Incilius alvarius	Sonoran Desert Toad					2
Leopardus pardalis	Ocelot Area of Potential Occurrence	LE				1
Panthera onca	Jaguar Area of Potential Occurrence	LE				1
Rana blairi	Plains Leopard Frog				S	1
Rana chiricahuensis	Chiricahua Leopard Frog Refugia	LT		S		1

Note: Status code definitions can be found at <https://www.azgfd.com/wildlife-conservation/on-the-ground-conservation/state-wildlife-action-plan/state-wildlife-action-plan-status-definitions/>.

Special Areas Documented that Intersect with Project Footprint as Drawn

Scientific Name	Common Name	FWS	USFS	BLM	NPL	SGCN
Canis lupus baileyi	10J Area Zone 2 for Mexican Wolf	LE,XN				
Mustela nigripes	10J Area for Black-footed Ferret	LE,XN				

Note: Status code definitions can be found at <https://www.azgfd.com/wildlife-conservation/on-the-ground-conservation/state-wildlife-action-plan/state-wildlife-action-plan-status-definitions/>.

Species of Greatest Conservation Need Predicted that Intersect with Project Footprint as Drawn, based on Predicted Range Models

Scientific Name	Common Name	FWS	USFS	BLM	NPL	SGCN
Anthus spragueii	Sprague's Pipit					2
Aquila chrysaetos	Golden Eagle	BGA		S		2
Artemisiospiza nevadensis	Sagebrush Sparrow					3
Aspidoscelis sonorae	Sonoran Spotted Whiptail					2
Athene cucularia hypugaea	Western Burrowing Owl		S	S		2
Auriparus flaviceps	Verdin					2
Buteo regalis	Ferruginous Hawk			S		2
Buteo swainsoni	Swainson's Hawk					2
Buteogallus anthracinus	Common Black Hawk					2
Calcarius ornatus	Chestnut-collared Longspur					2
Callipepla squamata	Scaled Quail					2
Calypte costae	Costa's Hummingbird					2
Camptostoma imberbe	Northern Beardless-Tyrannulet		S			2
Campylorhynchus brunneicapillus	Cactus Wren					2
Catharus ustulatus	Swainson's Thrush					2
Chordeiles minor	Common Nighthawk					2
Coccyzus americanus	Yellow-billed Cuckoo (Western DPS)	LT	S	S		1
Columbina inca	Inca Dove					2
Corvus cryptoleucus	Chihuahuan Raven					2

Species of Greatest Conservation Need Predicted that Intersect with Project Footprint as Drawn, based on Predicted Range Models

Scientific Name	Common Name	FWS	USFS	BLM	NPL	SGCN
<i>Corynorhinus townsendii pallescens</i>	Pale Townsend's Big-eared Bat		S	S		1
<i>Cynanthus latirostris</i>	Broad-billed Hummingbird		S			2
<i>Cynomys ludovicianus</i>	Black-tailed Prairie Dog	CCA		S		1
<i>Elgaria kingii</i>	Madrean Alligator Lizard					2
<i>Empidonax wrightii</i>	Gray Flycatcher					2
<i>Eumops perotis californicus</i>	Greater Western Bonneted Bat			S		2
<i>Falco mexicanus</i>	Prairie Falcon					2
<i>Falco peregrinus anatum</i>	American Peregrine Falcon		S	S		1
<i>Falco sparverius</i>	American Kestrel					2
<i>Heloderma suspectum</i>	Gila Monster					1
<i>Hypsiglena sp. nov.</i>	Hooded Nightsnake					2
<i>Icterus bullockii</i>	Bullock's Oriole					2
<i>Incilius alvarius</i>	Sonoran Desert Toad					2
<i>Kinosternon flavescens</i>	Yellow Mud Turtle					2
<i>Lanius ludovicianus</i>	Loggerhead Shrike					2
<i>Lasiurus cinereus</i>	Hoary Bat					2
<i>Lasiurus frantzii</i>	Desert Red Bat		S			2
<i>Lasiurus xanthinus</i>	Western Yellow Bat		S			2
<i>Leptonycteris yerbabuenae</i>	Lesser Long-nosed Bat			S		1
<i>Megascops kennicottii</i>	Western Screech-owl					2
<i>Melanerpes uropygialis</i>	Gila Woodpecker					2
<i>Melospiza lincolni</i>	Lincoln's Sparrow					2
<i>Micrathene whitneyi</i>	Elf Owl					3
<i>Myotis auriculus</i>	Southwestern Myotis					2
<i>Myotis thysanodes</i>	Fringed Myotis					2
<i>Myotis velifer</i>	Cave Myotis			S		2
<i>Myotis yumanensis</i>	Yuma Myotis					2
<i>Notiosorex cockrumi</i>	Cockrum's Desert Shrew					2
<i>Nyctinomops femorosaccus</i>	Pocketed Free-tailed Bat					2
<i>Nyctinomops macrotis</i>	Big Free-tailed Bat					2
<i>Parabuteo unicinctus</i>	Harris's Hawk					2
<i>Passerculus sandwichensis</i>	Savannah Sparrow					2
<i>Peucaea botterii arizonae</i>	Arizona Botteri's Sparrow			S		2
<i>Peucaea carpalis</i>	Rufous-winged Sparrow					2
<i>Phrynosoma solare</i>	Regal Horned Lizard					2
<i>Poocetes gramineus</i>	Vesper Sparrow					2
<i>Spizella breweri</i>	Brewer's Sparrow					2
<i>Tadarida brasiliensis</i>	Brazilian Free-tailed Bat					2
<i>Terrapene ornata</i>	Ornate Box Turtle			S		1

Species of Greatest Conservation Need Predicted that Intersect with Project Footprint as Drawn, based on Predicted Range Models

Scientific Name	Common Name	FWS	USFS	BLM	NPL	SGCN
Toxostoma bendirei	Bendire's Thrasher					2

Species of Economic and Recreation Importance Predicted that Intersect with Project Footprint as Drawn

Scientific Name	Common Name	FWS	USFS	BLM	NPL	SGCN
Callipepla gambelii	Gambel's Quail					
Callipepla squamata	Scaled Quail					
Odocoileus hemionus	Mule Deer					
Patagioenas fasciata	Band-tailed Pigeon					
Pecari tajacu	Javelina					
Puma concolor	Mountain Lion					
Zenaida asiatica	White-winged Dove					
Zenaida macroura	Mourning Dove					

Project Type: Development Outside Municipalities (Rural Development), Commercial/industrial (mall) and associated infrastructure, New construction or expansion

Project Type Recommendations:

During the planning stages of your project, please consider the local or regional needs of wildlife in regards to movement, connectivity, and access to habitat needs. Loss of this permeability prevents wildlife from accessing resources, finding mates, reduces gene flow, prevents wildlife from re-colonizing areas where local extirpations may have occurred, and ultimately prevents wildlife from contributing to ecosystem functions, such as pollination, seed dispersal, control of prey numbers, and resistance to invasive species. In many cases, streams and washes provide natural movement corridors for wildlife and should be maintained in their natural state. Uplands also support a large diversity of species, and it is important to identify and conserve upland wildlife movement corridors. In addition, maintaining biodiversity and ecosystem functions can be facilitated through improving designs of structures, fences, roadways, and culverts to promote passage for a variety of wildlife species. Guidelines for many of these can be found at:

<https://www.azgfd.com/wildlife-conservation/planning-for-wildlife/planning-for-wildlife-wildlife-friendly-guidelines/>.

Consider impacts of outdoor lighting on wildlife and develop measures or alternatives that can be taken to increase human safety while minimizing potential impacts to wildlife. Artificial lighting could impair the ability of nocturnal animals to navigate (e.g., owls, migratory birds, bats, and other nocturnal mammals) and may affect wildlife behavior and populations. The AZGFD recommends using only the minimum amount of light needed for safety, especially in areas immediately adjacent to open space or undeveloped lands. The AZGFD encourages the use of motion sensing lighting and narrow spectrum lighting (amber or warm tones typically 2700 Kelvin or lower) wherever possible to lower the range of species affected by lighting. Also, please consider shielding, canting, or cutting all lighting, where possible, to ensure that light reaches only areas needing illumination and to minimize impacts to nocturnal wildlife.

Minimize the potential introduction or spread of exotic invasive species, including aquatic and terrestrial plants, animals, insects and pathogens. Precautions should be taken to wash and/or decontaminate all equipment utilized in the project activities before entering and leaving the site. See the Arizona Department of Agriculture website for a list of prohibited and restricted noxious weeds at <https://www.invasivespeciesinfo.gov/> and the Arizona Native Plant Society <https://aznps.com/invas> for recommendations on how to control these species. To view a list of documented invasive species or to report invasive species in or near your project area visit [iMapInvasives](#) - a national cloud-based application for tracking and managing invasive species at <https://imap.natureserve.org/imap/services/page/map.html>.

- To build a list: zoom to your area of interest, use the identify/measure tool to draw a polygon around your area of interest, and select “See What’s Here” for a list of reported species. To export the list, you must have an account and be logged in. You can then use the export tool to draw a boundary and export the records in a csv file.

Evaluate potential impacts to wildlife and fish species due to changes in access to water, water quality, quantity, chemistry, temperature, and alteration to flow regimes (timing, magnitude, duration, and frequency of floods). Minimize impacts to springs, in-stream flow, and consider irrigation improvements to decrease water use. If dredging is a project component, consider timing the project to minimize impacts to spawning fish and other aquatic species. Wash, drain, and dry equipment to reduce the spread of exotic invasive species. AZGFD recommends early coordination with the Project Evaluation Program (PEP@azgfd.gov) for projects that could impact water resources, wetlands, streams, springs, and/or riparian habitats.

The Department recommends that wildlife surveys are conducted to determine if noise-sensitive species occur within the project area. Avoidance or minimization measures could include conducting project activities outside of breeding seasons.

Trenches should be covered or back-filled as soon as possible. Incorporate escape ramps in ditches or fencing along the perimeter to deter small mammals and herpetofauna (snakes, lizards, tortoise) from entering ditches.

Communities can actively support the sustainability and mobility of wildlife by incorporating wildlife planning into their regional/comprehensive plans, their regional transportation plans, and their open space/conservation land system programs. An effective approach to wildlife planning begins with the identification of the wildlife resources in need of protection, an assessment of important habitat blocks and connective corridors, and the incorporation of these critical wildlife components into the community plans and programs. Community planners should identify open spaces and habitat blocks that can be maintained in their area, and the necessary connections between those blocks to be preserved or protected. Community planners should also work with State and local transportation planning entities, and planners from other communities, to foster coordination and cooperation in developing compatible development plans to ensure wildlife habitat connectivity. The Department's guidelines for incorporating wildlife considerations into community planning and developments can be found on the Wildlife Friendly Guidelines portion of the Wildlife Planning page at <https://www.azgfd.com/wildlife-conservation/planning-for-wildlife/planning-for-wildlife-wildlife-friendly-guidelines/>.

Development plans should provide for open natural space for wildlife movement, while also minimizing the potential for wildlife-human interactions through design features. Please contact Project Evaluation Program for more information on living with urban wildlife at PEP@azgfd.gov or at <https://www.azgfd.com/wildlife-conservation/planning-for-wildlife/project-evaluation-program/> and <https://www.azgfd.com/wildlife-conservation/planning-for-wildlife/planning-for-wildlife-wildlife-friendly-guidelines/>.

Project Location and/or Species Recommendations:

Your project site is within one or more defined **Areas of Possible Occurrence**. Please follow Department protocols while working within an Area of Potential Occurrence at U:\Agency Directives\Jaguar Ocelot and Mexican Wolf Management Directive 20171215.pdf