

# COCHISE COUNTY

## Board of Supervisors

Adopt the Resolution to establishment of James Ranch Road as  
a Declared County Highway

### Engineering & Natural Resources

Jackie Watkins,  
Director / County Engineer



***Public Programs...Personal Service***

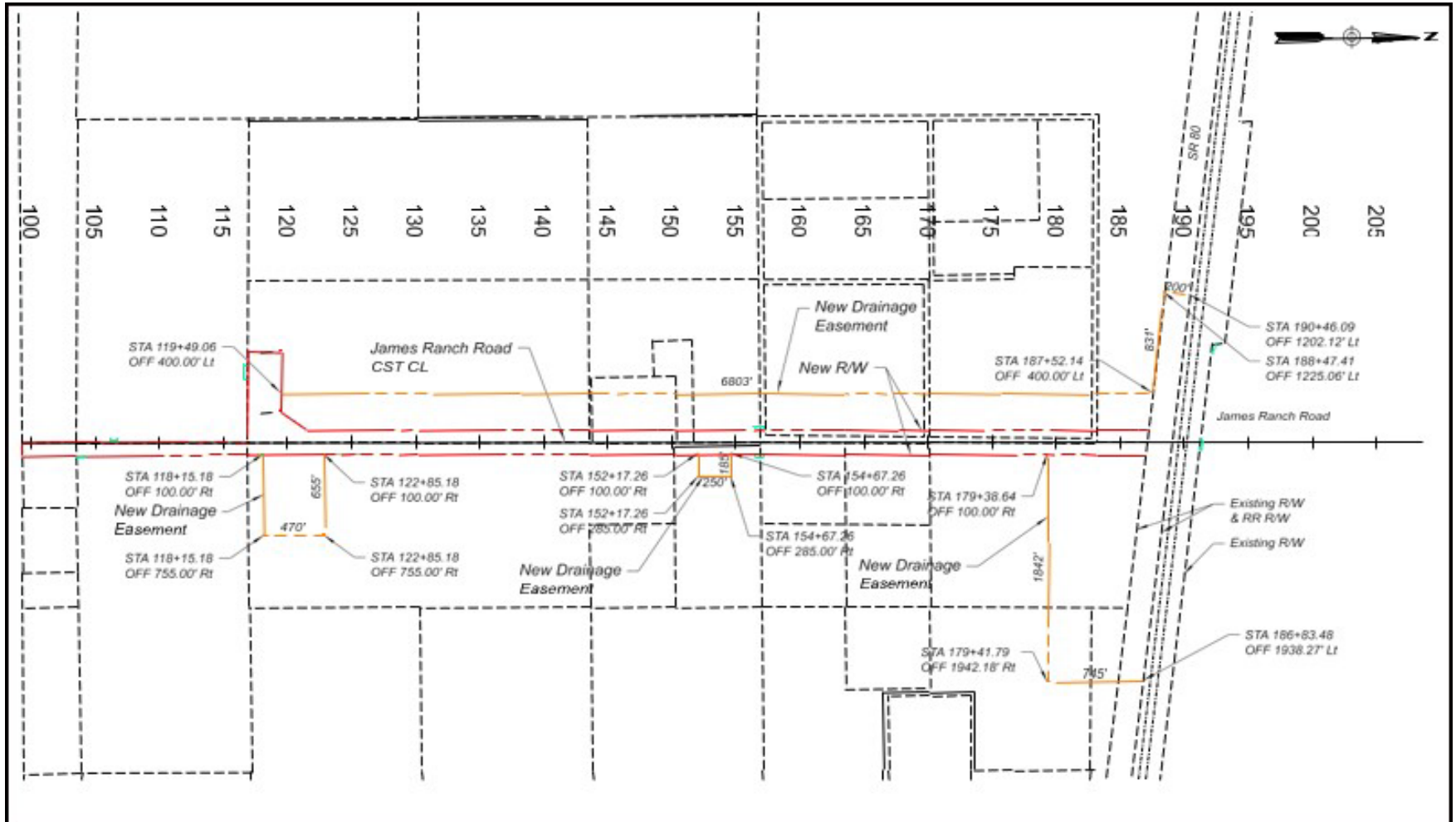


LOCATION MAP



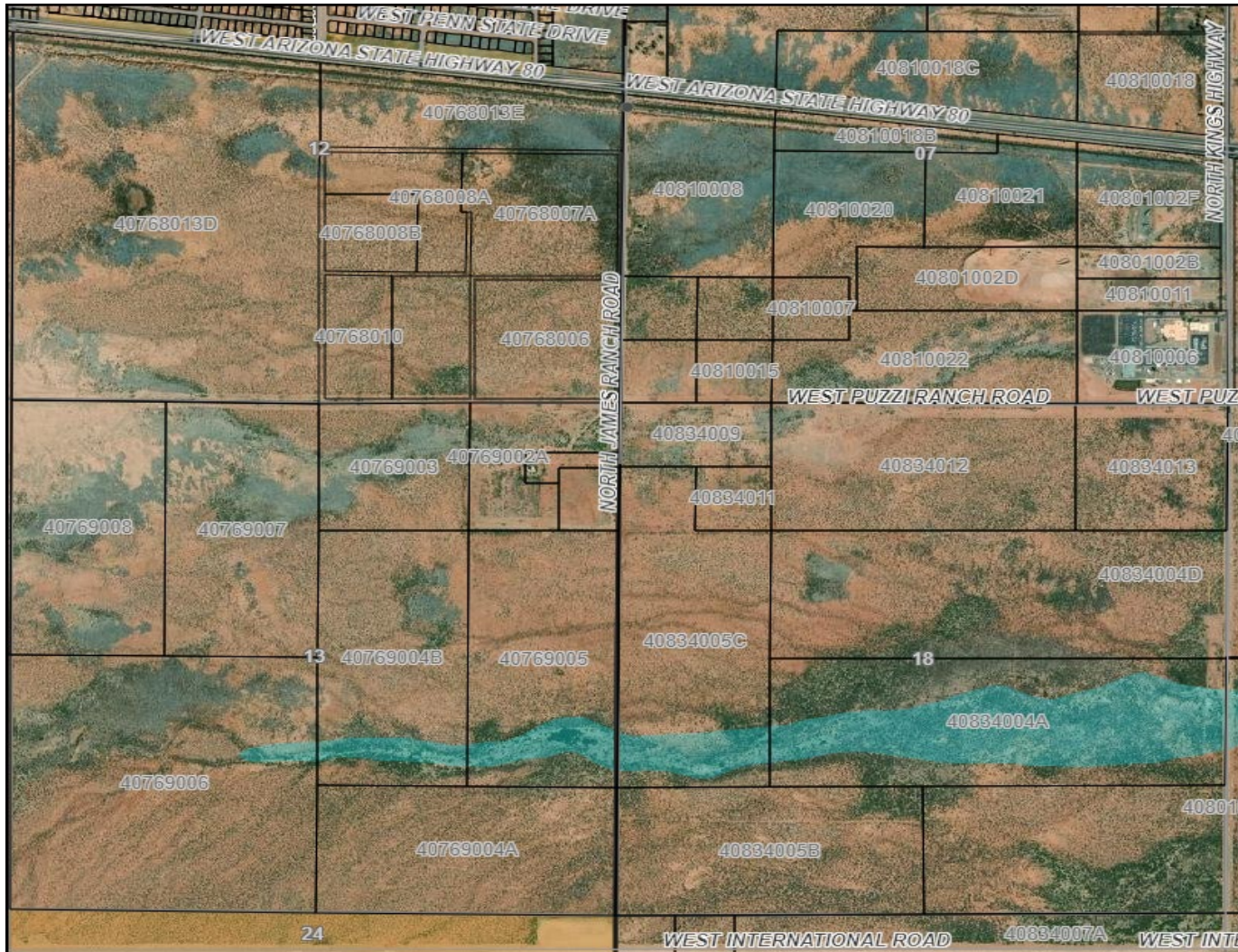
James Ranch Road Street View looking South from  
HWY 80

# ENGINEERING & NATURAL RESOURCES



Initial Right-of-Way Strip Map

# ENGINEERING & NATURAL RESOURCES



Cochise County GIS Location Map

# ENGINEERING & NATURAL RESOURCES



This Department recommends the establishment of James Ranch Road as a Declared County Highway.

- The establishment of a Declared County Highway will allow public funds to be used for road improvements beyond ordinary maintenance, including the purchase of any necessary rights-of-way.
- The County has an agreement with ADOT to acquire the necessary rights-of-way for the new international Port of Entry construction.
- NEPA clearance has been finalized by ADOT 04/01/2025.

