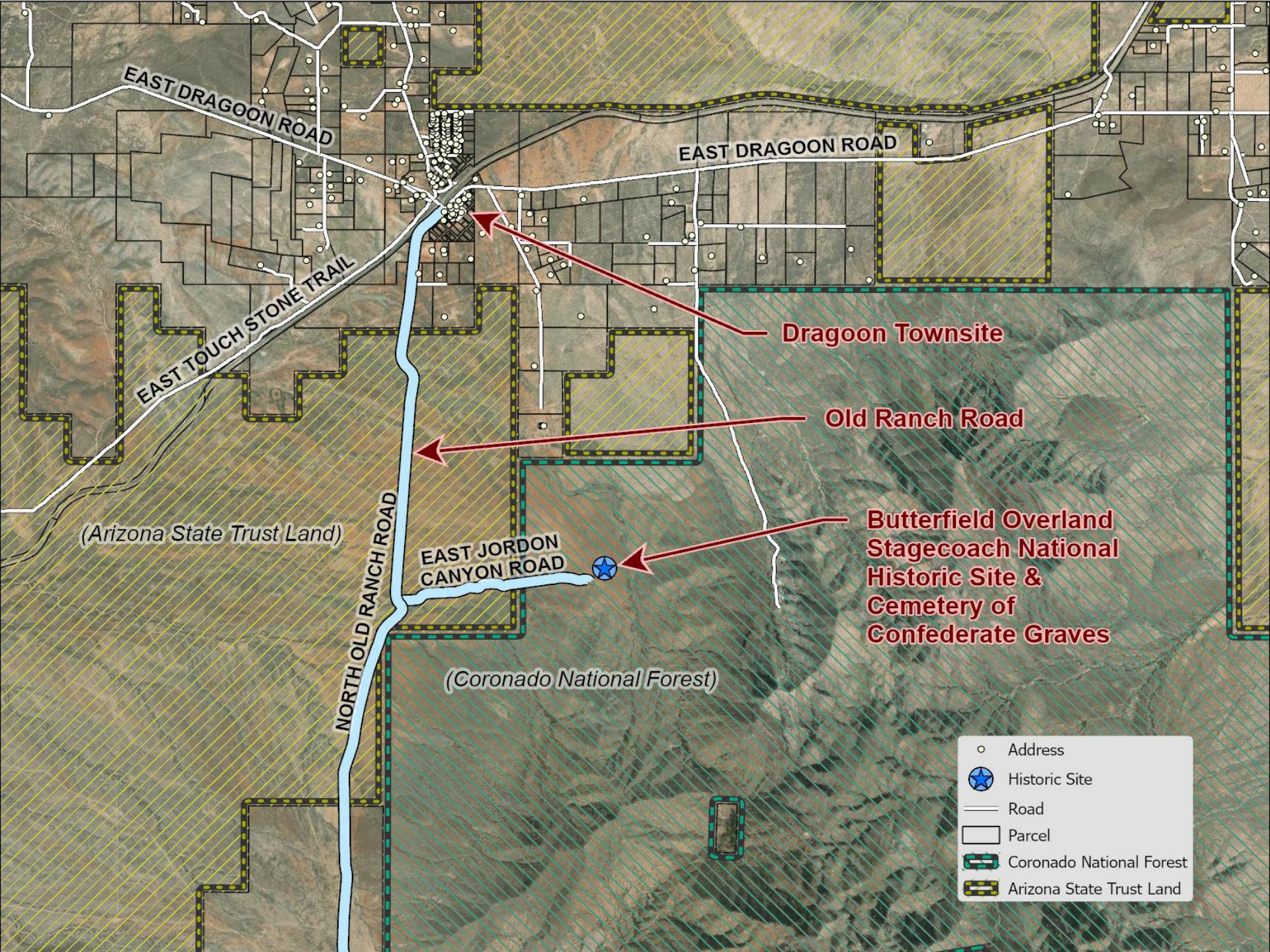


Old Ranch Road

Board of Supervisors
November 18, 2025

Jackie Watkins, P.E., CFM
Director / County Engineer



EAST DROGON ROAD

EAST DROGON ROAD

EAST TOUCH STONE TRAIL

Drought Townsite

Old Ranch Road

(Arizona State Trust Land)

EAST JORDON CANYON ROAD

Butterfield Overland Stagecoach National Historic Site & Cemetery of Confederate Graves

(Coronado National Forest)

NORTH OLD RANCH ROAD

- Address
- ★ Historic Site
- Road
- ▭ Parcel
- ▨ Coronado National Forest
- ▨ Arizona State Trust Land

ENGINEERING & NATURAL RESOURCES





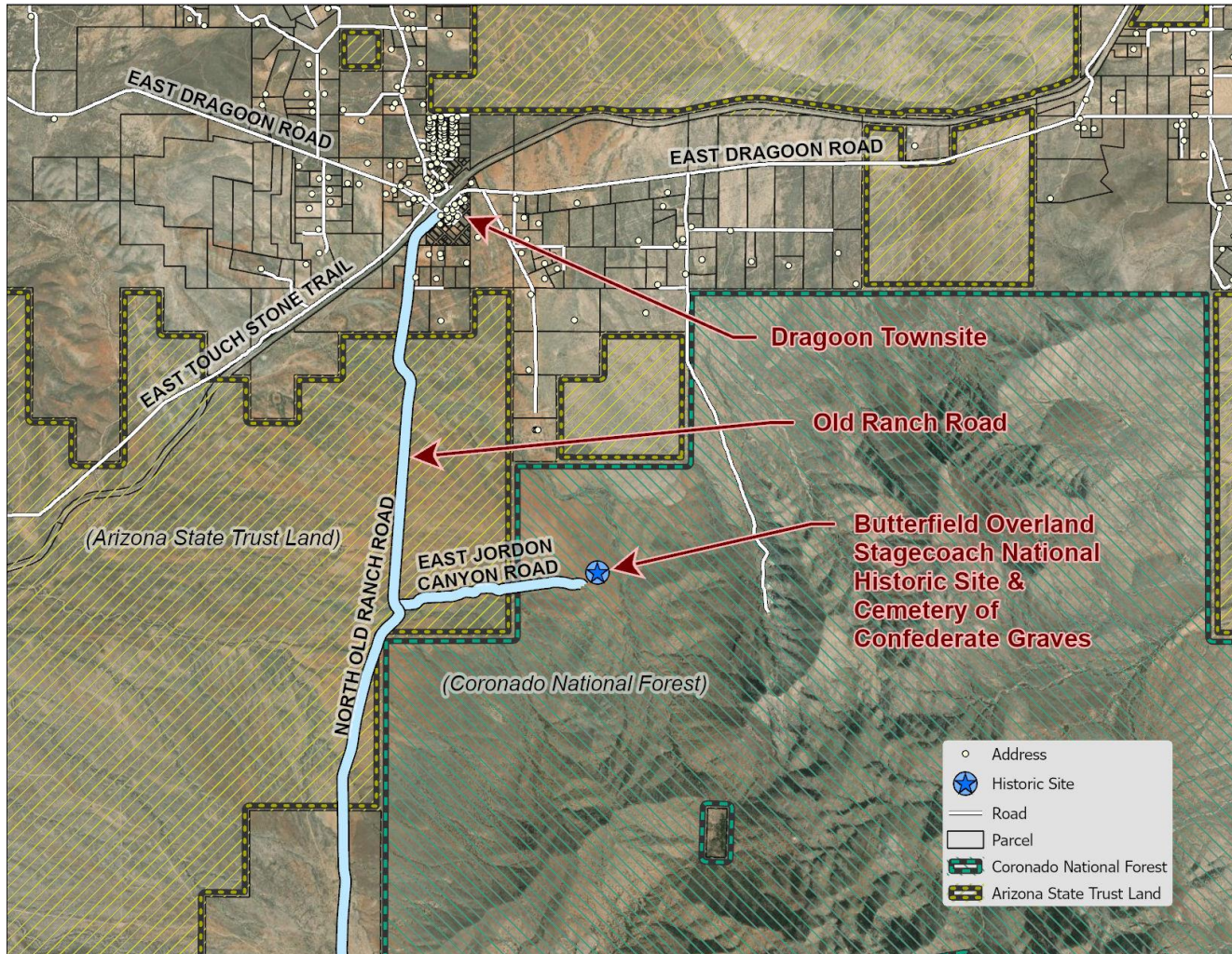
Butterfield Overland Stagecoach National Historic Site



Confederate Cemetery

- ❖ **1884 Declared Public Highway**
 - **Board of Supervisor meeting September 24, 1884.**
- ❖ **1912 County Road Map**
 - **1927 ARS 28-7042 (A), road established and used by the public declared public highway sixty-six feet wide**
 - **1960 ARS 28-7041 (C), road used by the public for 10 years declared public highway**
- ❖ **1994 Dropped from County Maintenance**
 - **Not dropped as Public Highway**

ENGINEERING & NATURAL RESOURCES



Questions?