

**COCHISE COUNTY**

# Roads in Cochise County

Board of Supervisors

Work Session

February 7, 2025



*Public Programs...Personal Service*

# Roads in Cochise County

- State Highways (Arizona Department of Transportation)
- Local Agency Roads (City/Town)
- County Maintained Road
  - County Highways, declared by the BOS
  - County Road, adopted for maintenance
- Public Roads Eligible for County Maintenance
- Public Roads, not accepted for maintenance
- Private Roads



## COCHISE COUNTY

# Roads in Unincorporated Cochise County

- Approximately 5,114 Miles Roads Unincorporated Area
  - Does not include State Highways
- 3,681 Miles of Non-County Maintained Roads
- 1,433 Miles County Maintained Roads
  - Paved Roads 694 miles
    - Asphalt 84 miles
    - Chip Sealed 610 miles
  - Dirt Roads 739 miles
    - Primitive Roads 431 miles
      - ARS 28-6706
        - » Opened before June 13, 1990
        - » Not constructed in accordance with County standards
        - » Sign “PRIMITIVE ROAD, CAUTION, USE AT YOUR OWN RISK  
THIS SURFACE IS NOT REGULARLY MAINTAINED.”
        - » Liability Limitation



# COCHISE COUNTY

# GIS / Maps – Maintained Road

**Cochise County Maintained Road**

Enter Address or Parcel

**About**

Click on a County Maintained Road symbol on the map to view additional information.

**Legend**

- Cochise County Maintained Road:
  - Paved
  - Not Paved
  - Not Paved - Primitive Road
- Incorporated City

Note: Roads are designated as a Primitive Road in accordance with [Arizona Revised Statute 28-6706](#)

**Tools**

**Search**

Enter Address or Parcel

Use the Search tool to enter an Address, Location, or Parcel Number (parcel number without hyphen, example 12345678A). The Search tool utilizes a combination of County and external sources to aid in navigating. Please be aware that Search results using external sources may place you in an unexpected area.

**Share**

Use the Share tool to create a URL link.

**Attribute Table**

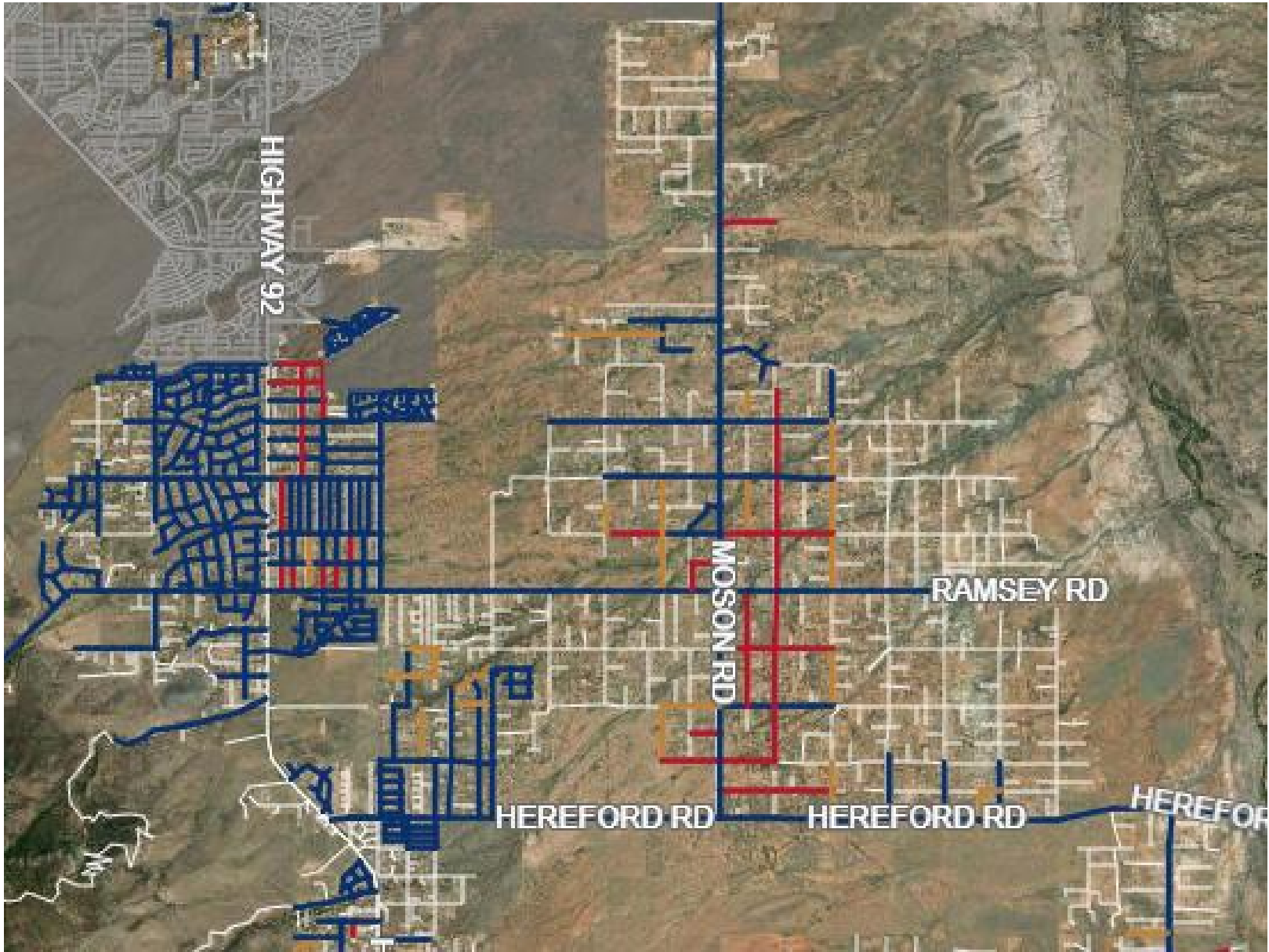
At the bottom of the map, use the arrow tab to access a table containing attribute information about feature(s) displayed in the map.

-110.629 32.215 Degrees

<https://cochise.maps.arcgis.com/apps/webappviewer/index.html?id=023ba941458a4ce7b93498e6a956d70e>

<https://gis-cochise.opendata.arcgis.com/>





## COCHISE COUNTY

- Gas tax funds road maintenance
- Not Property Tax
- Highway User Revenue Funds (HURF)
  - Arizona gas tax 18 cents a gallon (1990)
  - Cochise County receives 0.12 cents a gallon
- If you paid for 50 gallons of gas a month that would be \$9 in HURF Tax and about 6 cents comes back to Cochise County.



## COCHISE COUNTY

# How Paved Roads are Added to Maintenance:

1. Subdivision plat processed and approved by BOS.
  1. Developer must engineer and construct to County Standards.
  2. BOS Approves road to be added to County maintained roads.
2. Existing County Maintained Dirt Road: Resolution 15-25, Public/Private Partnership for Road Improvement.
  1. Road must be apart of the County Maintained Road system.
  2. Public right-of-way must exist or provided to county at no cost
  3. Substantial support by majority of adjoining property owners.
  4. Total cost not to exceed limitations per ARS 34-201(D).
  5. Applicant to pay cost of materials (pavement, aggregate base, drainage culverts).
3. BOS Declare Road as a County Highway



## COCHISE COUNTY

# How to add Unimproved Roads (Dirt) to Maintenance:

1. Resolution 19-01 Dropping Roads from and Adding Roads to the County Maintenance System
2. Limitations
  1. Open for public travel since January 1, 1950. BOS may accept and add to maintenance
  2. Open and in use prior to June 13, 1990. BOS may accept and add to maintenance.
  3. Open and in use after June 13, 1990. Not eligible for maintenance until built to County Standards.
3. BOS Declare Road as a County Highway



## Declared County Highways

- Petition to the BOS to accept or deny
- If BOS accepts:
  - County Engineer survey proposed route
  - Prepares deeds for right-of-way acquisitions
  - Engineering Report
- Public Hearing



# Add / Drop Roads from Maintenance

## Highlights of Resolution 19-01

- Drop Road Considerations
  - ADT (Average Daily Traffic) less than 20
  - Encroachments
  - Opinion of the users of the road
- Add Road Minimum Requirements
  - Public right-of-way greater than 50 feet
  - Constructed prior to June 13, 1990
  - Contiguous to a County maintained road
  - ADT greater than 100



## Road Management Technologies

- Real-Time Pavement Performance Analytics
- Improve existing maintained roads and optimize budget efficiencies.
- Pavement Condition Index (PCI)
  - Imagery
  - Reports
  - Deterioration Modeling
- Last done 2019



## COCHISE COUNTY

# Road Districts A.R.S. Title 48

- Road Improvement District (RID)
  - Residents responsible for cost of design and construction to improve public roads to County Standards
  - County then assumes maintenance of road
- Road Improvement and Maintenance District (RIMD)
  - Residents improve road to a standard that is less than County Standard
  - District is responsible for maintenance
  - Local elected governing board of residents in the district
  - District funds, additional property tax
  - RIMD in County
    - Fairfield Estates
    - High Knoll Ranches



# Questions ?

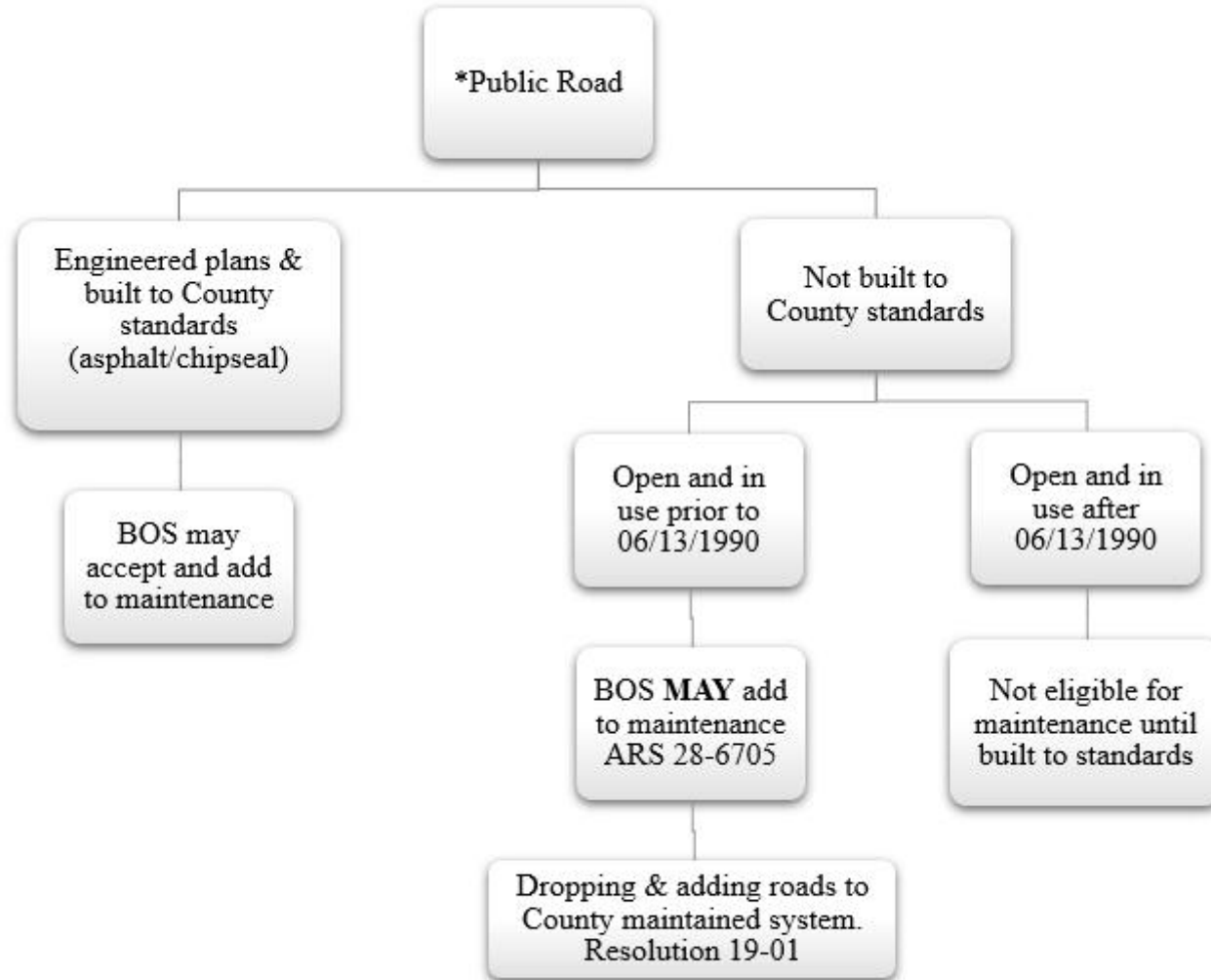


Davis Road



# COCHISE COUNTY

## MAINTENANCE ELIGIBILITY FOR PUBLIC ROADS



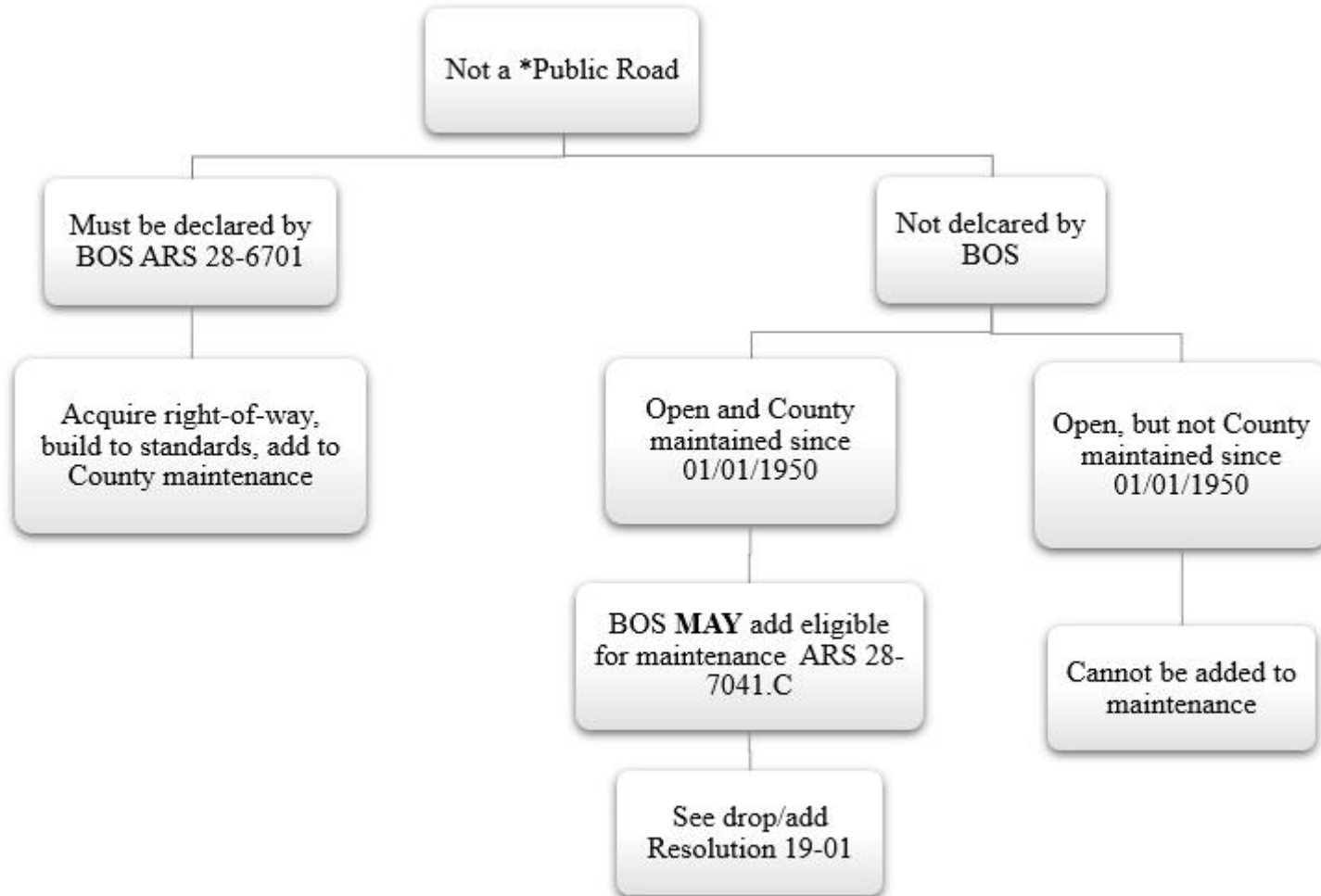
\*Public Road= one that has been legally granted to the County, either in fee or as an easement

*Public Programs...Personal Service*



# COCHISE COUNTY

## PRIVATE ROAD MAINTENANCE ELIGIBILITY



\*Public Road= one that has been legally granted to the County, either in fee or as an easement

