



# *Jail Planning Services for Cochise County, Arizona*

*Presented to:  
Cochise County Jail District  
Board of Directors*

## **Jail Planning Services Briefing**



March 11, 2025 | 1:00pm



# Introductions

**Chinn Planning, Inc.**  
388 E. Ocean Blvd, P-12  
Long Beach, CA 90802

**Karen Chinn:**  
karenlchinn@gmail.com  
803.261.5682



**Karen Chinn, President**  
Project Leader

- Needs Assessment
- System Forecasting
- Facility Operational and Space Programs

**DLR Group**  
6225 N. 24<sup>th</sup> Street, Suite 250  
Phoenix, AZ 85016

**Larry Smith, AIA:**  
lsmith@dlrgroup.com  
602.999.9693



**Larry Smith, AIA**  
Justice Facilities Planner & Costing

- Locational and Site Analysis
- Costing

**Gary Retel, AIA:**  
gretel@dlrgroup.com  
310.740.0764



**Gary Retel, AIA, LEED AP BD+C**  
Justice Facilities Designer

- Facility Options and Concepts
- Project Cost Estimates



# Factors Impacting Criminal Justice Systems and Services

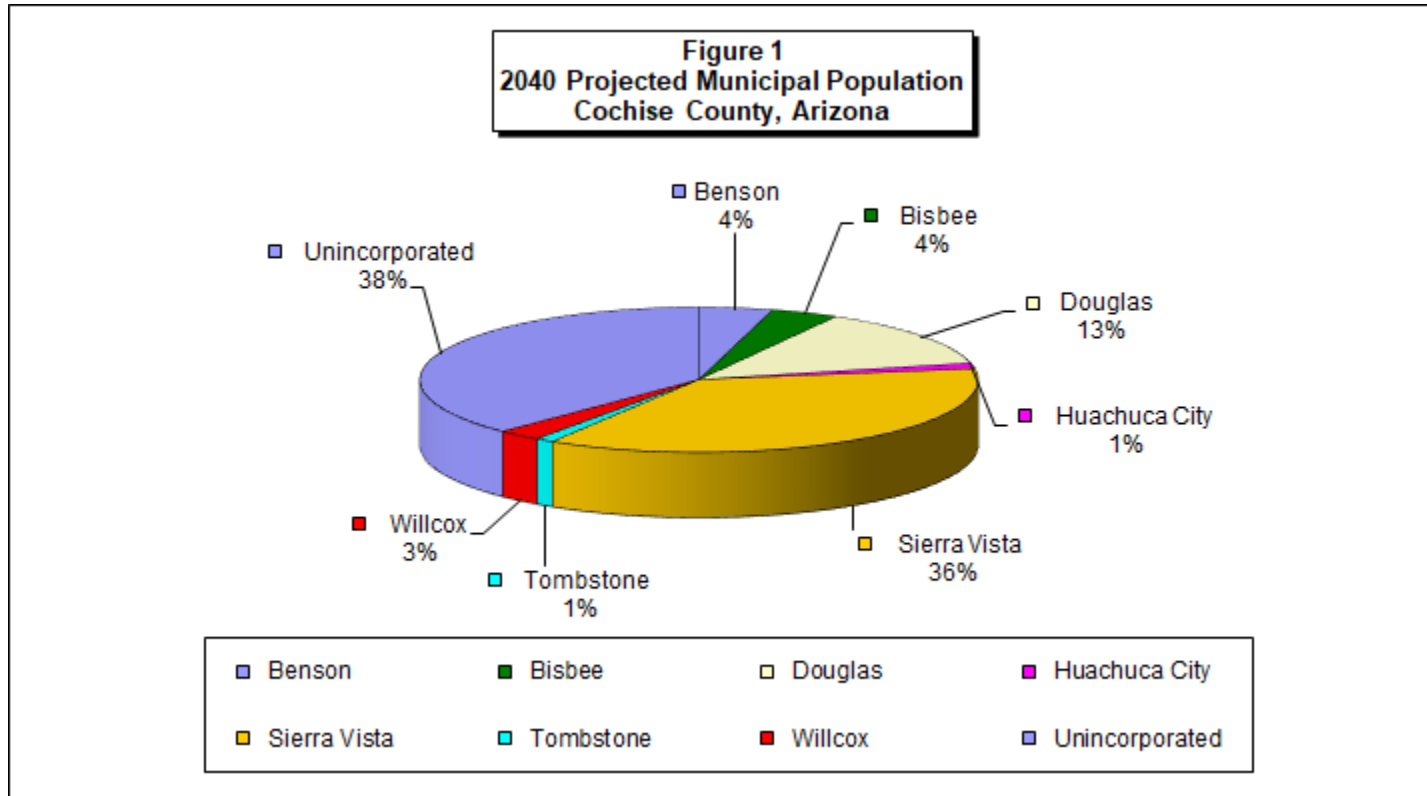
## Factors Impacting Criminal Justice System and Services

- Population and Demographic Trends
- Social and Economic Factors
  - Homelessness
  - Poverty
  - Drug and Alcohol Addiction
  - Domestic Violence
  - Lack of Education
  - Unemployment
  - Mental Illness
- Crime and Arrest Rates
- Law Enforcement, Judicial, Prosecution, Defense, Probation and Parole, and Immigration Policies and Practices
- Bond Setting and Bail Practices
- Pre-Trial Screening, Services, and Monitoring
- Continuum of Community Supervision and Alternative Options
- Availability of Local Treatment and Rehabilitative Programs (Mental Health, Substance Abuse, Housing Employment)
- Funding and Grant Programs (Mental Health and Substance Abuse Treatment)
- Changes in Statutes and Sentencing Guidelines
- Rehabilitative Programming During Incarceration
- Transition and Re-entry Programming to Reduce Recidivism



# Review Data Trends

## Demographic Trends and Profile Characteristics

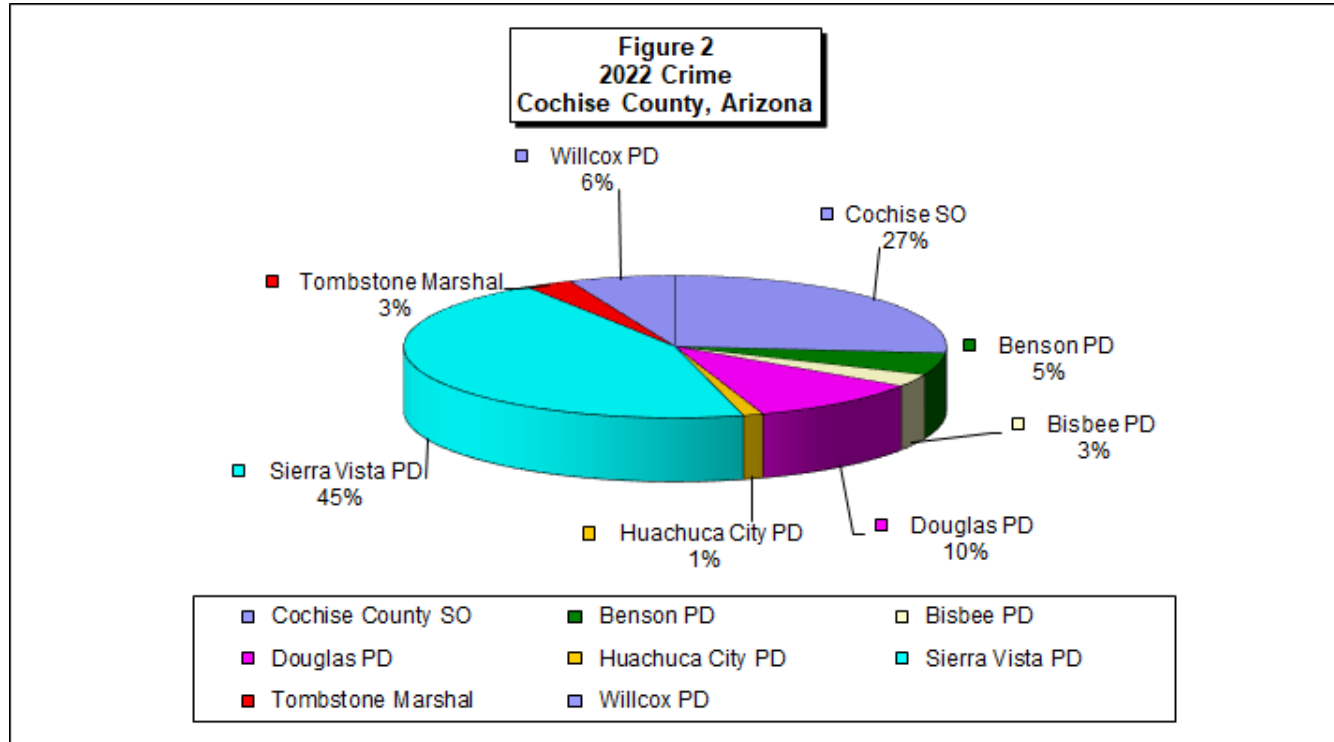


- Sierra Vista is projected to represent 36.8% of the total population in Cochise County by 2040, while the unincorporated area will represent 38.6% of the population. Benson, Bisbee, Huachuca City, Willcox, and Tombstone populations combined will represent 13% of the projected population in Cochise County by 2040, with the remaining 13% in Douglas.



# Review Data Trends

## Crime and Arrest Trends



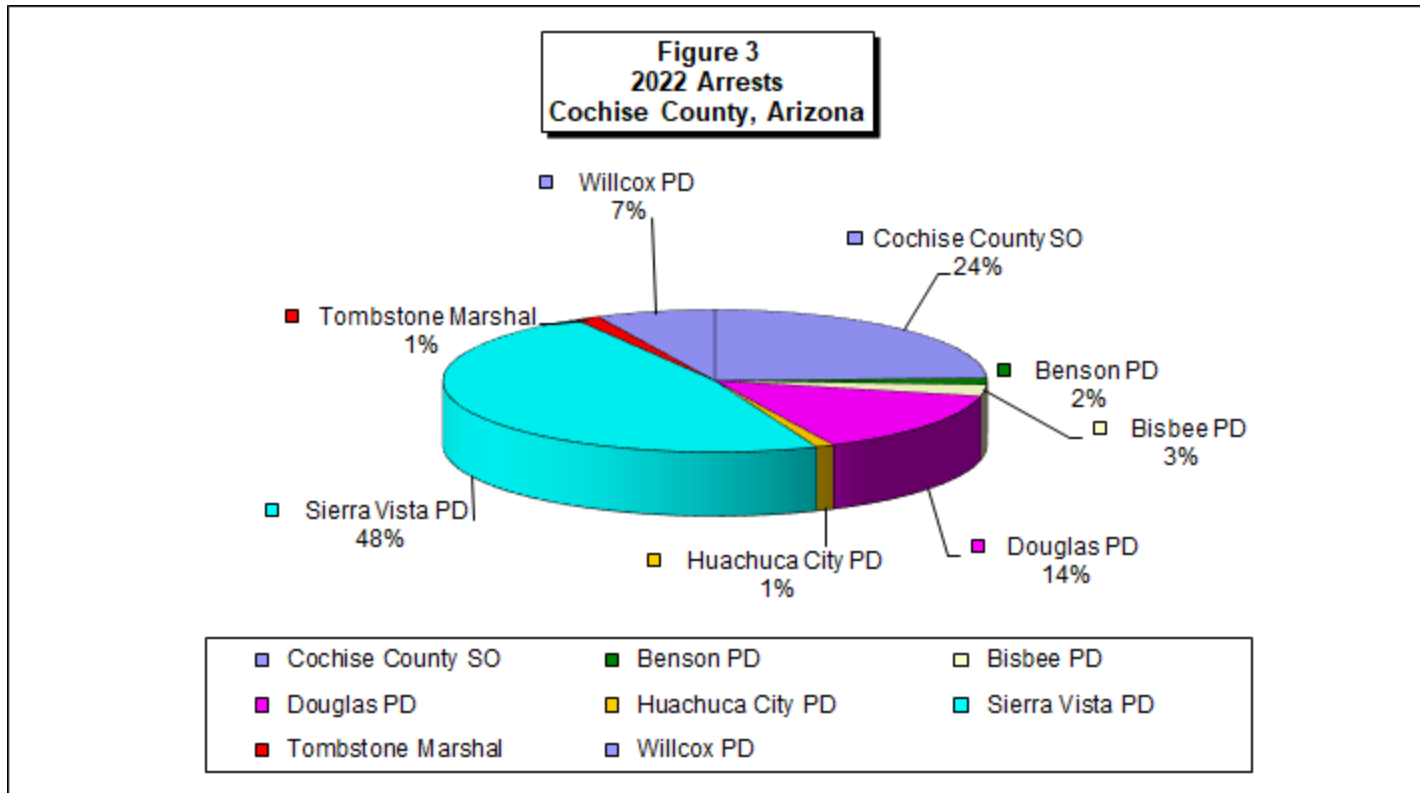
Source: Arizona Department of Public Safety.

- Sierra Vista Police Department reported 45% of Cochise County crime totals for 2022, followed by the Cochise Sheriff's Office at 27%.
- All other municipalities accounted for 10% or less of total reported crimes in Cochise County in 2022.



# Review Data Trends

## Crime and Arrest Trends

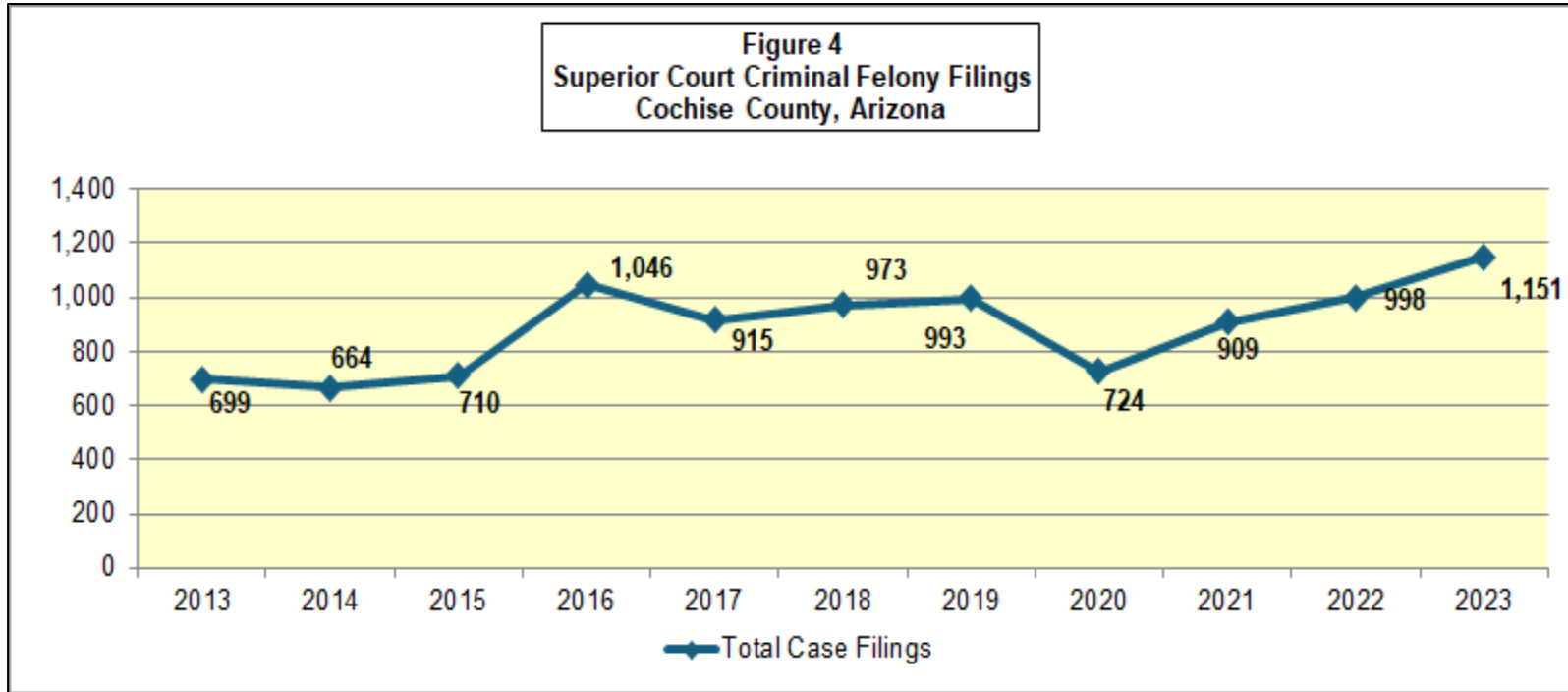


- In 2022, Sierra Vista arrests represented 48% of the total arrests in Cochise County, followed by the Cochise County Sheriff's Office at 24%.



# Review Data Trends

## Superior Court Trends



Source: Arizona Judicial Branch.

- Superior Court Criminal Felony Filings increased by 64.7% between FY2013 and FY2023; with an actual number increase of 452.
- Criminal Felony Case Filings peaked at 1,151 in Fiscal Year 2023.



# Review Data Trends

## Superior Court Trends

- Drug - Possession/Paraphernalia and sales were the most frequent case type at 33.5% (933 filings).
- Person - Other Assaults was the second most frequent case type at 9.2% (256 filings).

Table 1 Criminal Caseload by Charge - 2024 Cochise County, Arizona		
Case Type - Section - 1 Felony	Total Filings	Percent
> Person - Homicide	15	0.5%
> Person - Sex Offenses	147	5.3%
> Person - Kidnapping	24	0.9%
> Person - Robbery	26	0.9%
> Person - Aggravated Assault	226	8.1%
> Person - Other Assaults	256	9.2%
> Property - Burglary	74	2.7%
> Property - Auto Theft	71	2.5%
> Property - Other	239	8.6%
> Drug - Possession/Paraphernalia	735	26.4%
> Drug - Sales/Other	198	7.1%
> Weapons	83	3.0%
> Public Order	124	4.4%
> Motor Vehicle - DWI/DUI	180	6.5%
> Motor Vehicle - Serious Violations	0	0.0%
> Motor Vehicle - Other	96	3.4%
> Other Felony/Unclassified	293	10.5%
<b>Total Felony</b>	<b>2,787</b>	<b>100.00%</b>
<b>Total Misdemeanor</b>	<b>342</b>	
<b>GRAND TOTAL</b>	<b>3,129</b>	
Note: (1) Numbers have not been reviewed or approved by the AOC.		
Source: Cochise County Superior Court.		



# Review Data Trends

## Superior Court Trends

Table 2 Superior Court - Criminal Manner of Sentencing Cochise County, Arizona						
Sentence Category	FY 2019	FY 2020	FY 2021	FY 2022	FY 2023	Average Annual % Decrease
Death Sentence	0	0	0	0	0	
Corrections	477	485	359	220	103	-19.6%
County Jail	47	68	75	48	26	-11.2%
Probation	423	370	377	404	293	-7.7%
Other	8	9	5	4	4	-12.5%
<b>Total</b>	<b>955</b>	<b>932</b>	<b>816</b>	<b>676</b>	<b>426</b>	<b>-13.8%</b>

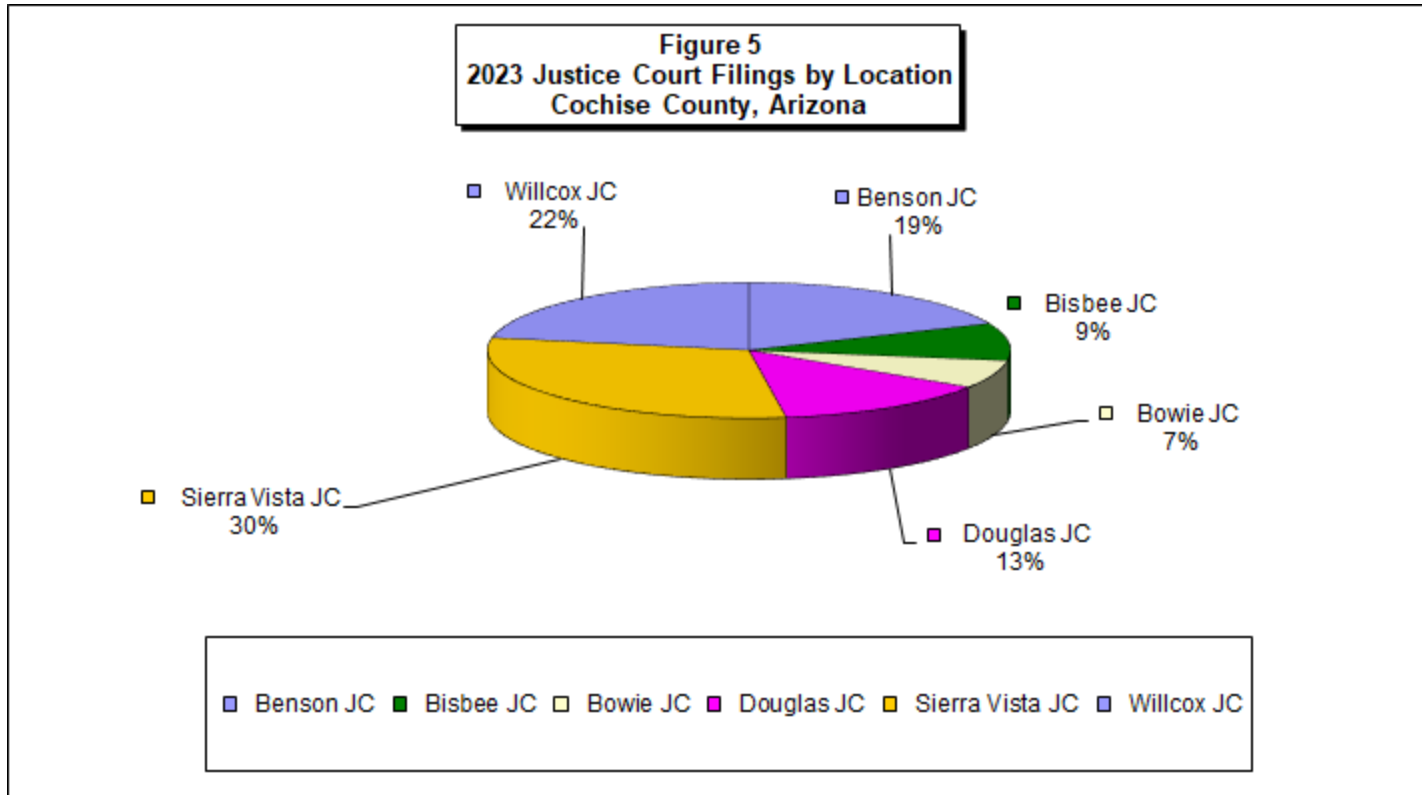
*Source: Arizona Judicial Branch.*

- All the sentence categories decreased between FY19 and FY23, by almost 14% per year.
- Sentencing to the Department of Corrections experienced the most significant decrease of 78.4% for the period.
- Probation represented 68.8% of sentencing in FY2023.
- 99.8% of dispositions are without jury trials.



# Review Data Trends

## Justice Court Trends



Source: Arizona Judicial Branch.

- Sierra Vista Justice Court had the most filings in 2023 (30%), followed by Willcox (22%).
- The majority of Justice Court case type is Civil Traffic (varies between 40%-75% of JC caseloads), while felony filings range from 3% to 18% of JC caseloads.



# Review Data Trends

## Justice Court Trends

Table 3 Justice Court - Initial Appearance by Location Cochise County, Arizona					
Court	2020	2021	2022	2023	Avg % Change
Bisbee JP1	138	185	262	286	35.7%
Benson JP3	81	94	136	174	38.3%
Bowie JP6	20	23	15	24	6.7%
Douglas JP2	315	445	396	431	12.3%
Sierra Vista JP5	403	504	721	639	19.5%
Willcox JP4	148	162	118	141	-1.6%
<b>Total</b>	<b>1,105</b>	<b>1,413</b>	<b>1,648</b>	<b>1,695</b>	<b>17.8%</b>

*Source: Cochise County Superior Court.*

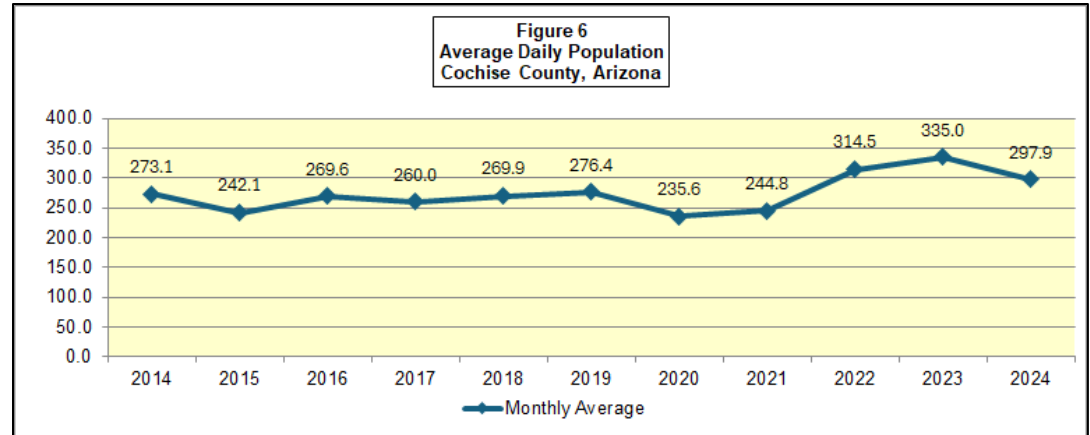
- In 2023, Sierra Vista Justice Court accounted for 37.7% of all Initial Appearances.
- Justice Court Initial Appearances increased by 53.4% during the 4-year period..



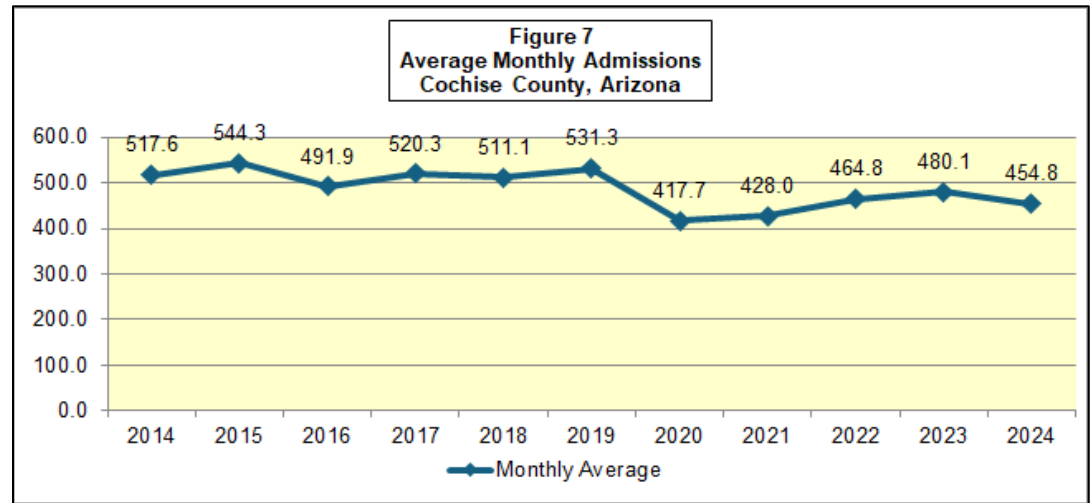
# Review Data Trends

## Adult Jail Trends

- The average daily population in the jail increased overall by 9.1% between 2014 and 2024 (less than 1% per year); the actual number increase in jail population was 24.8 inmates.
- Average daily population peaked at a monthly average of 335 inmates in 2023.
- The total decrease in average monthly admissions to the jail during the 10-year period was 12.1% (1.2% per year); the actual number decrease was 62.8 fewer monthly admissions.
- Average monthly jail admissions peaked at a monthly average of 544.3 in 2015.



Source: Cochise County Sheriff's Office.



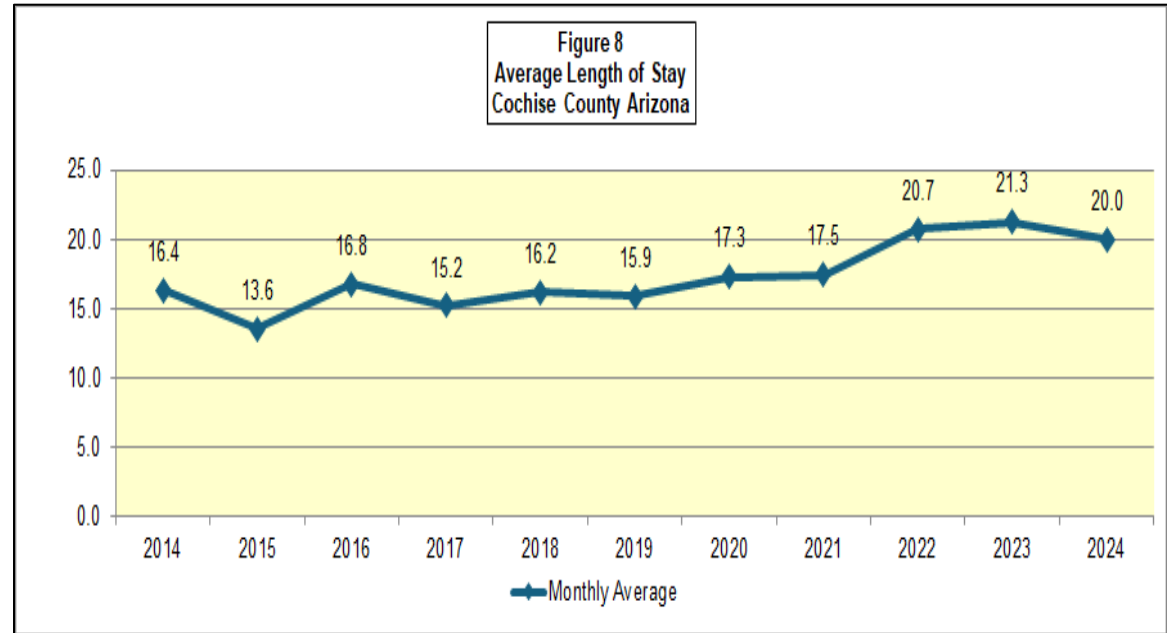
Source: Cochise County Sheriff's Office.



# Review Data Trends

## Adult Jail Trends

- Average Length of Stay increased by 22% between 2014 and 2024, going from 16.4 days, to 20 days in 2024; actual number increase was 3.6 days.
- Length of Stay peaked at a monthly average of 21.3 days in 2023.
- Increasing length of stay has contributed to the increase in average daily jail population as evidenced by a decrease in monthly admissions and an increase in average length of stay.



Source: Cochise County Sheriff's Office.



# Review Data Trends

## Adult Jail Profile

- Hispanic was the largest minority race at 17%.
- Inmates with a Class 2 Felony accounted for 36% of the inmate population.
- A total of 82% of the population is pretrial in pretrial status.
- Inmates age 30 to 39 were the most frequent age group at 30%.
- In terms of arresting agency, Sierra Vista PD and Cochise SO accounted for 54% of the inmates at the jail.
- In terms of residency, Sierra Vista and Douglas accounted for 47% of the inmates at the jail.
- The most frequent length of stay was 26 to 99 days at 37%, based on the population housed at the jail on October 3, 2024.
- The most frequent bond was \$10,000 to \$49,999 at 20%.
- A total of 5% of the inmate population had a low bond (\$5,000 or less), and 14% of the population had a high bond amount set (\$100,000 or more)
- There the 206 inmates in the jail on October 3, 2024 were charged with a total of 491 offenses.
- Warrant was the most frequent offense at 14.1%, followed by Drug Possession at 13.2% (excluding other).
- Probation and Parole Violation combined was the third most frequent offense listed for inmates in the jail at 10%.



# Review Data Trends

## Jail Profile Offense – Inmates 200+ Days

- Aggravated assault and drug possession and sales combined represented the largest percentage of offenses (16.4% each) for inmates in the jail over 200 days.
- Sex offenses charges at 12.7% and warrant at 10.9% represented the second and third largest categories of offenses for inmates that had been in the jail for over 200 days.
- Thirteen of the 22 inmates that were in the jail in excess of 200 days had multiple charges, which are shown below in the note.

Table 4 Jail Profile - Offense - Inmates 200+ Days - October 3, 2024 Cochise County, Arizona		
	Number	Percent
<b>Offense</b>		
> Homicide/Manslaughter	4	7.3%
> Aggravated Assault	9	16.4%
> Drug Possession	6	10.9%
> Drug Sales	3	5.5%
> Fleeing Law Enforcement	2	3.6%
> Endangerment	2	3.6%
> Domestic Violence	2	3.6%
> Probation Violation	1	1.8%
> Sex Offense	7	12.7%
> Warrant	6	10.9%
> Other	13	23.6%
<b>TOTAL</b>	<b>55</b>	<b>100.00%</b>
Note: (1) Several inmates have multiple offenses (there were 22 inmates).		

**Note:**

13 of the 22 inmates had charges listed as other, which included: Child Abuse - 3; False Reporting - 1; Resisting Arrest - 3; Open Container - 1; Promoting Prison Contraband - 2; Evidence Tampering - 1; Fighting - 1; Court Order Violation - 1; Criminal Damage - 2; Simple Assault - 1; Preventing Phone Use in Emergency - 1; excessive Speed - 1; Reckless Driving - 1; Prohibited Possessor - 1; Use of Weapon during Felony - 2; Violation of Conditions of Release - 1; and, Kidnapping - 2.



# Review Summary and Key Findings of Criminal Justice System Assessment

## Summary System Assessment

- **Population** projections for Cochise County indicate modest growth (less than .3% growth per year) through 2040. Sierra Vista will drive the growth, and is projected to be 36.8% of the total County population by 2040.
- **Crime and arrests** trends show decreases over the past six years. Reported crime shows a decrease of 31% (5.2% per year), and total arrests a decrease of 15% (5% per year), with most of the reported crime and arrests (almost 50%) coming from the Sierra Vista Police Department. Arrests for crimes against person represented 14% of all County arrests in 2022. Over half (56%) of total arrests in 2022 were for Group B Offenses, which include low level non-violent offenses of behavior and public disorder.
- **Superior Court** case filings increased by less than 1% per year over a ten-year period. However, Criminal Felony Filings in the Superior Court increased by 6.5% per year during the same timeframe. Criminal Felony Filings in the Superior Court represent 31% of total filings, followed by Domestic Relations 24%, Civil 18%, Probate 17%, Mental Health and Juvenile 11%. Filings in the Mental Health category experienced a 14% per year increase between FY13 to F23.
- Almost half (48%) of Superior Court Criminal Felony Filings are for one of the following charges: drug possession/paraphernalia and sales; public order; DUI/DWI; and motor vehicle other charges.
- The manner of sentencing in the Superior Court is predominately probation (68.8%), followed by Corrections (24.2%), County Jail (6.1%) and other (.9%).



# Review Summary and Key Findings of Criminal Justice System Assessment

## Summary System Assessment (*continued*)

- **Justice Court** case filings grew slightly by .4% per year between FY 2015 and FY 2023. Sierra Vista and Willcox represent 52% of case filings in the Justice Courts. Bisbee and Benson Justice Courts show the greatest growth in initial appearances (36-38% per year) between 2020 and 2023.
- The **County Attorney** has felony and misdemeanor drug, mental health, and traffic diversion programs. In 2024 499 offenders were enrolled in diversion programs.
- The **Public Defender/Legal Advocate** represented 68% of cases assigned for legal defense in FY23/24, while contract attorneys represented 32% of all cases.
- **Probation** directly supervised population caseloads have remained stable at roughly 800-850 supervised cases from 2018 to 2023. Probation revocations have come down since a high in 2019 (202 revocations) to 143 revocations in 2023. A high percentage of the jail population have charges of probation violation, which may be combined with new offenses.
- **Jail** average daily population over the past ten years has remained fairly stable between 250-300 inmates per day, with the exception of spiked populations in 2022 and 2023 hitting 315-335 daily population. Monthly admissions to the jail have had fluctuating patterns, but overall are down from 2014, averaging 454 admissions per month in 2024. Average length of stay has increased—going from 16.4 days in 2014 to 20 days in 2024. Based on a one-day snapshot, a majority of the population is male (85%); white (69%); in pretrial status (82%); age 18 to 40 (62%); had bond set (54%); over a quarter (28%) were in the jail for over 100 days; and Sierra Vista Police and Cochise County Sheriff combined arrested over half (54%) of inmates at the jail. Inmates seen by psych providers increased by 86% in two years, and 20% of the inmate population is on psych medication.



# Review Summary and Key Findings of Criminal Justice System Assessment

## Key Findings

- There is a cost benefit in collocating criminal justice services. Many agencies work together in the justice system and serve the same clients, and transportation is a big cost. Overall efficiency and consistency would be enhanced by collocation of services.
- Sierra Vista experiences the majority of criminal justice activity in the County including: reported crime, reported arrests, court filings and proceedings, probation caseloads, and jail admissions and daily population.
- Mental health and substance abuse populations are prevalent in the criminal justice system. Considering the high level of these populations and their service needs, specialized services within the justice system should be expanded, and specialized housing and services will be needed in the future jail facility.
- Expansion and Enhancement of Criminal Justice Systems, Services and Alternatives can have an impact on future Jail Population Capacity Requirements. These include:
  - Enhanced Pretrial Screening
  - Expansion of Electronic Monitoring
  - Validation and Adherence to a Uniform Bond Schedule
  - Increased Diversion and Specialized Courts and Services for Mental Health and Substance Abuse Populations
  - Comprehensive Review of ERC Caseload and Practices (75% of cases)
  - Enhanced Data Systems and Reporting to Inform Decision Making
  - Enhanced/Expanded Community Supervision Sanctions and Services for Probation
  - Reduction in Standard Length on Probation Supervision (3 years current average)
  - Expansion of Mental Health and Substance Abuse Services in the Jail
  - Arraignment/Initial Appearance/ERC Court Located at Jail
  - Establishment of a Criminal Justice Coordinating Council comprised of all leaders in the justice system to meet quarterly and review data trends and concepts for expansion/enhancements to the Criminal Justice System in Cochise County.



# Jail Forecasts

## Inmate Population Forecasts

Table 5 INMATE POPULATION FORECAST MODELS				
	2025	2035	2045	2055
Forecast 1 - Avg. Number Increase - 2014-2024 - 2.5/Year + 20% Peaking/Classification	300 60	325 65	350 70	375 75
<b>Bedspace Estimate</b>	<b>360</b>	<b>390</b>	<b>420</b>	<b>450</b>
Forecast 2 - Percentage Increase - 2014-2024 - .9%/Year + 20% Peaking/Classification	301 60	328 66	358 72	390 78
<b>Bedspace Estimate</b>	<b>361</b>	<b>394</b>	<b>430</b>	<b>468</b>
Forecast 3 - 2023 Incarceration Rate - 2.33 + 20% Peaking/Classification	299 60	303 61	306 61	311 62
<b>Bedspace Estimate</b>	<b>359</b>	<b>364</b>	<b>367</b>	<b>373</b>
Forecast 4 - Avg. Number Increase - 2014-2023 - 6.9/Year + 20% Peaking/Classification	305 61	374 75	443 89	512 102
<b>Bedspace Estimate</b>	<b>366</b>	<b>449</b>	<b>532</b>	<b>614</b>
Forecast 5 - Percentage Increase - 2014-2023 - 2.5%/Year + 20% Peaking/Classification	305 61	381 76	476 95	595 119
<b>Bedspace Estimate</b>	<b>366</b>	<b>457</b>	<b>571</b>	<b>714</b>
Forecast 6 - Avg. Number Increase - 2014 - 2024 - 2.5/Year - 10% Population Reduction - Alternatives + 20% Peaking/Classification	300 270 54	325 293 59	350 315 63	375 338 68
<b>Bedspace Estimate</b>	<b>324</b>	<b>352</b>	<b>378</b>	<b>406</b>

Source: Chinn Planning, Inc.

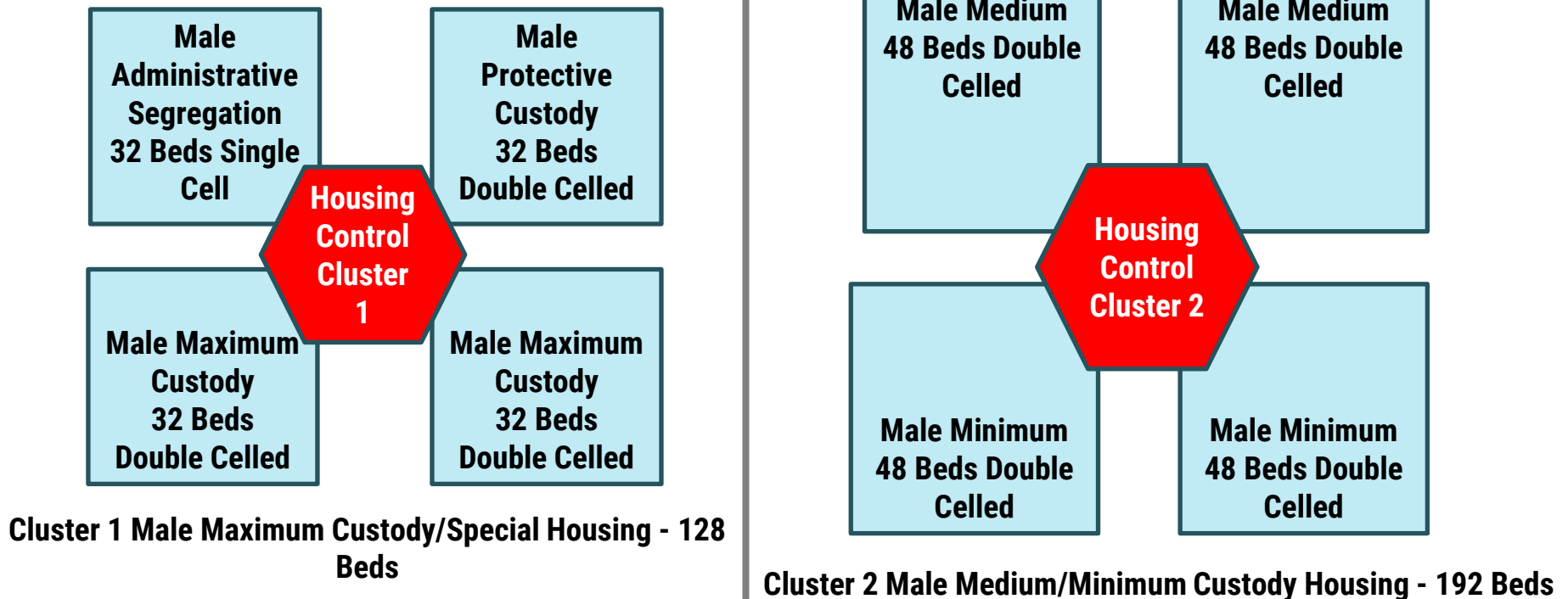
- Base average daily population is 2024 average of 297.9



# Jail Housing Distribution

## Conceptual Diagram of Jail Housing Distribution by Cluster

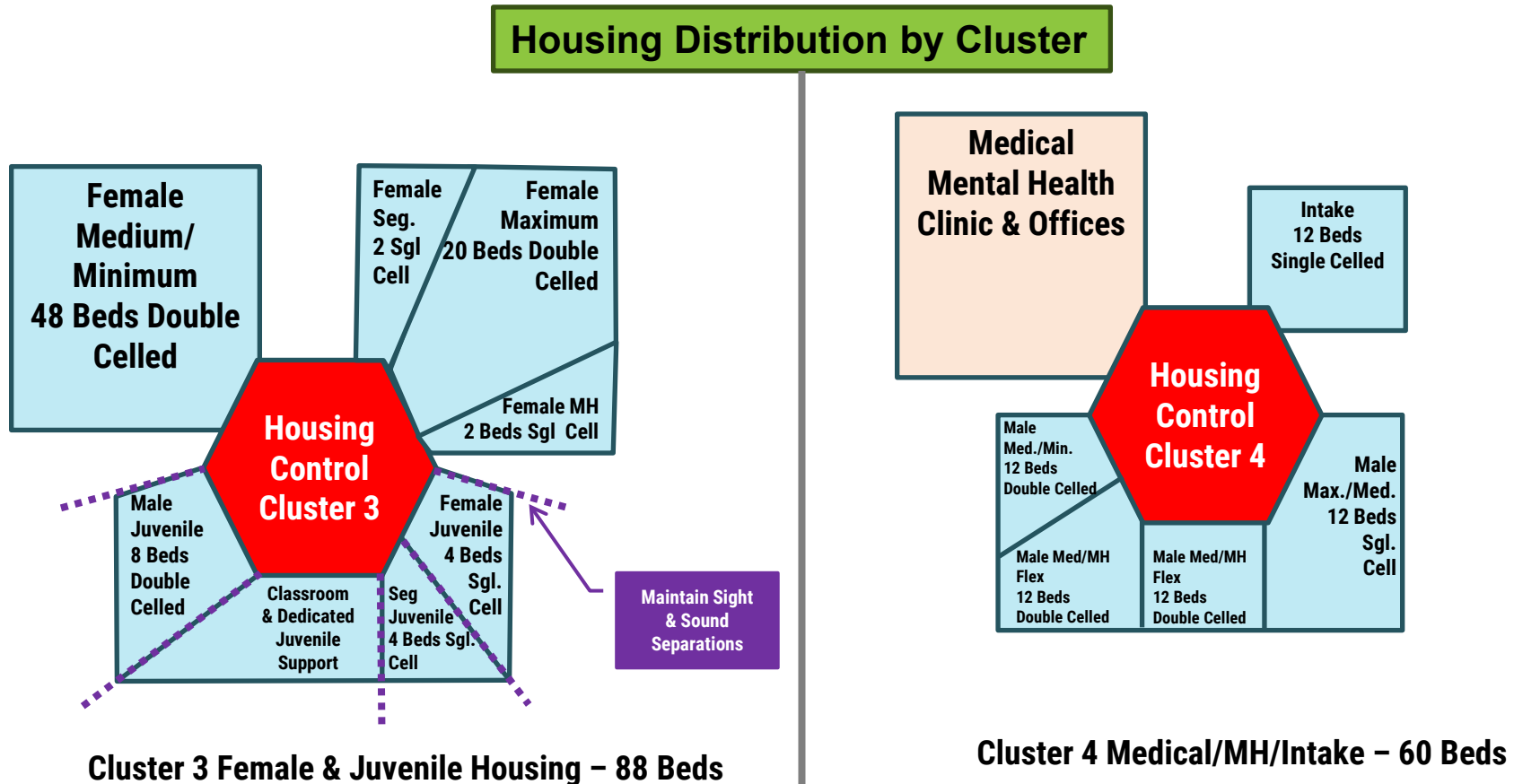
### Housing Distribution by Cluster





# Jail Housing Distribution

## Conceptual Diagram of Jail Housing Distribution by Cluster





# Jail Space Program Summary

## Cochise County Jail Space Program Summary

- **Total Building Gross Square Feet 204,764**

Table 6 COCHISE COUNTY, AZ JAIL FACILITY SPACE ALLOCATION SUMMARY				
Comp. #	Facility Component	Total NSF Component	Grossing Factor	Total DGSF
<b>1.000</b>	<b>PUBLIC LOBBY</b>			
1.100	Public Lobby	2,614	25%	3,268
	<b>Subtotal - Public Lobby</b>	<b>2,614</b>		<b>3,268</b>
<b>2.000</b>	<b>ADMINISTRATION</b>			
2.100	Administration	3,136	35%	4,234
	<b>Subtotal - Administration</b>	<b>3,136</b>		<b>4,234</b>
<b>3.000</b>	<b>COURTS</b>			
3.100	Courtrooms/Security/Inmate Holding	6,846	40%	9,584
	<b>Subtotal - Courts</b>	<b>6,846</b>		<b>9,584</b>
<b>4.000</b>	<b>SECURITY OPERATIONS</b>			
4.100	Security and Staff Services	7,366	40%	10,312
4.200	Central Control Room	750	30%	975
4.300	Housing Control Rooms	3,160	30%	4,108
4.400	Intake/Transfer/Release	8,232	40%	11,525
	<b>Subtotal - Security Operations</b>	<b>19,508</b>		<b>26,920</b>
<b>5.000</b>	<b>PROGRAM SERVICES</b>			
5.100	Inmate Programs	2,890	35%	3,902
	<b>Subtotal - Program Services</b>	<b>2,890</b>		<b>3,902</b>
<b>6.000</b>	<b>INMATE SERVICES</b>			
6.100	Medical and Mental Health Clinical Services	5,042	40%	7,059
6.200	Food Service	6,630	20%	7,956
6.300	Laundry	1,434	20%	1,721
6.400	Maintenance/Storage/Building Support	5,340	10%	5,874
	<b>Subtotal - Support Services</b>	<b>18,446</b>		<b>22,610</b>
<b>7.000</b>	<b>INMATE HOUSING</b>			
7.100	Special Management Housing (Segregation)-Male	4,510	60%	7,216
7.200	Special Management Housing (Protective Custody)-Male	4,060	50%	6,090
7.300	Maximum Custody Housing-Male	7,840	50%	11,760
7.400	Medium Custody Housing-Male	10,960	50%	16,440
7.500	Minimum Custody Housing-Male	10,960	50%	16,440
7.600	Medium/Minimum Custody Housing -Female	5,460	50%	8,190
7.700	Special Management/Mental Health Housing-Female	3,050	60%	4,880
7.800	Juvenile Housing	2,660	60%	4,256
7.900	Medical/Mental Health/Intake Housing	7,630	60%	12,208
	<b>Subtotal - Housing</b>	<b>57,130</b>		<b>87,480</b>
	<b>Total DGSF - Facility Components</b>			<b>157,997</b>
	Mechanical/Electrical (8%)			12,640
	<b>Subtotal</b>			<b>170,637</b>
	Overall Grossing Factor (20%)			34,127
	<b>TOTAL BUILDING GROSS SQUARE FEET</b>			<b>204,764</b>

### OTHER BUILDINGS AND OUTDOOR AREAS

- Large Training /Multipurpose Room -50 to 75 capacity
- Defensive Tactic Training Room
- Vehicle Storage
- Hazardous Material
- Garage/Vehicle Maintenance
- Staff Parking
- Visitor Parking
- Emergency Services Access and Parking



# Sheriff's Office Space Program Summary

## Cochise County Sheriff's Office Space Program Summary

- Sheriff's Office Command and Administrative Staff Areas
- Staff Training and Wellness Areas
- Space for Community Outreach, Civil, Records, Sworn Operations, and Investigations Divisions
- Evidence Storage Areas
- Fleet Garage
- **Total Building Gross Square Feet 57,165**

Table 7 SHERIFF OFFICE SPACE ALLOCATION SUMMARY JAIL PLANNING SERVICES FOR COCHISE COUNTY, ARIZONA				
Comp. #	Facility Component	Total NSF Component	Grossing Factor	Total DG SF
<b>SHERIFF COMPONENTS</b>				
1.000	<u>Public Lobby/Shared Use /Building Support</u>			
1.100	> Public Lobby	1,050	20%	1,260
1.200	> Staffing Training and Services	6,000	25%	7,500
1.300	> Building Support	2,150	20%	2,580
2.000	Administration, Community Outreach and Finance	5,074	35%	6,850
3.000	Records	3,704	25%	4,630
4.000	Civil Division	1,052	25%	1,315
5.000	Sworn Operations and Investigations	3,858	35%	5,208
6.000	Evidence	5,932	20%	7,118
7.000	Fleet Garage	6,650	15%	7,648
	Subtotal - Net and Departmental Gross Square Feet	35,470		44,109
	Mechanical/Electrical (8% of DG SF)			3,529
	Subtotal - DG SF and Mechanical	-		47,638
	<b>TOTAL BUILDING GROSS SQUARE FEET (1.20)</b>	-		<b>57,165</b>

Source: Chinn Planning, Inc.



# Courts Space Program Summary

## Cochise County Criminal Court Space Program Summary

- Public Areas for Community Service and Other Providers to Connect Social Services to Court Services
- (4) Superior Courtrooms
- (1) Justice Courtroom
- Superior Court Administration
- Meeting and Shared Use Space for Staff, Training and Conferencing
- Waiting at Lobby and Courtroom Areas
- Secure Holding Cells for in Custody Courtroom Appearances
- Criminal Justice Component Offices- Clerk of Court, County Attorney, Public Defender, Legal Advocate, Adult and Juvenile Probation
- **Total Building Gross Square Feet 141,599**

Table 8 COURT SPACE ALLOCATION SUMMARY JAIL PLANNING SERVICES FOR COCHISE COUNTY, ARIZONA				
Comp. #	Facility Component	Total NSF Component	Grossing Factor	Total DGSF
<b>COURT COMPONENTS</b>				
1.000	<u>Public Lobby/Shared Use /Building Support</u>			
1.100	> Public Lobby	3,390	25%	4,238
1.200	> Meeting/Shared Use/Staff Areas	5,320	25%	6,650
1.300	> Maintenance and Storage	4,680	25%	5,850
2.000	<u>Building Security/Inmate Holding</u>	3,360	35%	4,536
3.000	<u>Courtrooms and Judicial Support</u>			
3.100	> Superior Courts (4)	17,274	40%	24,184
3.200	> Justice Court (1)	4,512	40%	6,317
4.000	<u>Court Administration</u>	5,472	35%	7,387
5.000	<u>Clerk of Court</u>	8,912	30%	11,586
6.000	<u>County Attorney</u>	11,207	35%	15,129
7.000	<u>Public Defender</u>	4,364	35%	5,891
8.000	<u>Legal Advocate</u>	3,748	35%	5,060
9.000	<u>Adult Probation</u>	5,656	35%	7,636
10.000	<u>Juvenile Probation</u>	3,552	35%	4,795
	<b>Subtotal - Net and Departmental Gross Square Feet</b>	<b>77,895</b>		<b>109,258</b>
	<b>Mechanical/Electrical (8% of DGSF)</b>			<b>8,741</b>
	<b>Subtotal - DGSF and Mechanical</b>			<b>117,999</b>
	<b>Overall Building Grossing Factor (20%)</b>			<b>23,600</b>
	<b>TOTAL BUILDING GROSS SQUARE FEET</b>			<b>141,599</b>

Source: Chinn Planning, Inc.



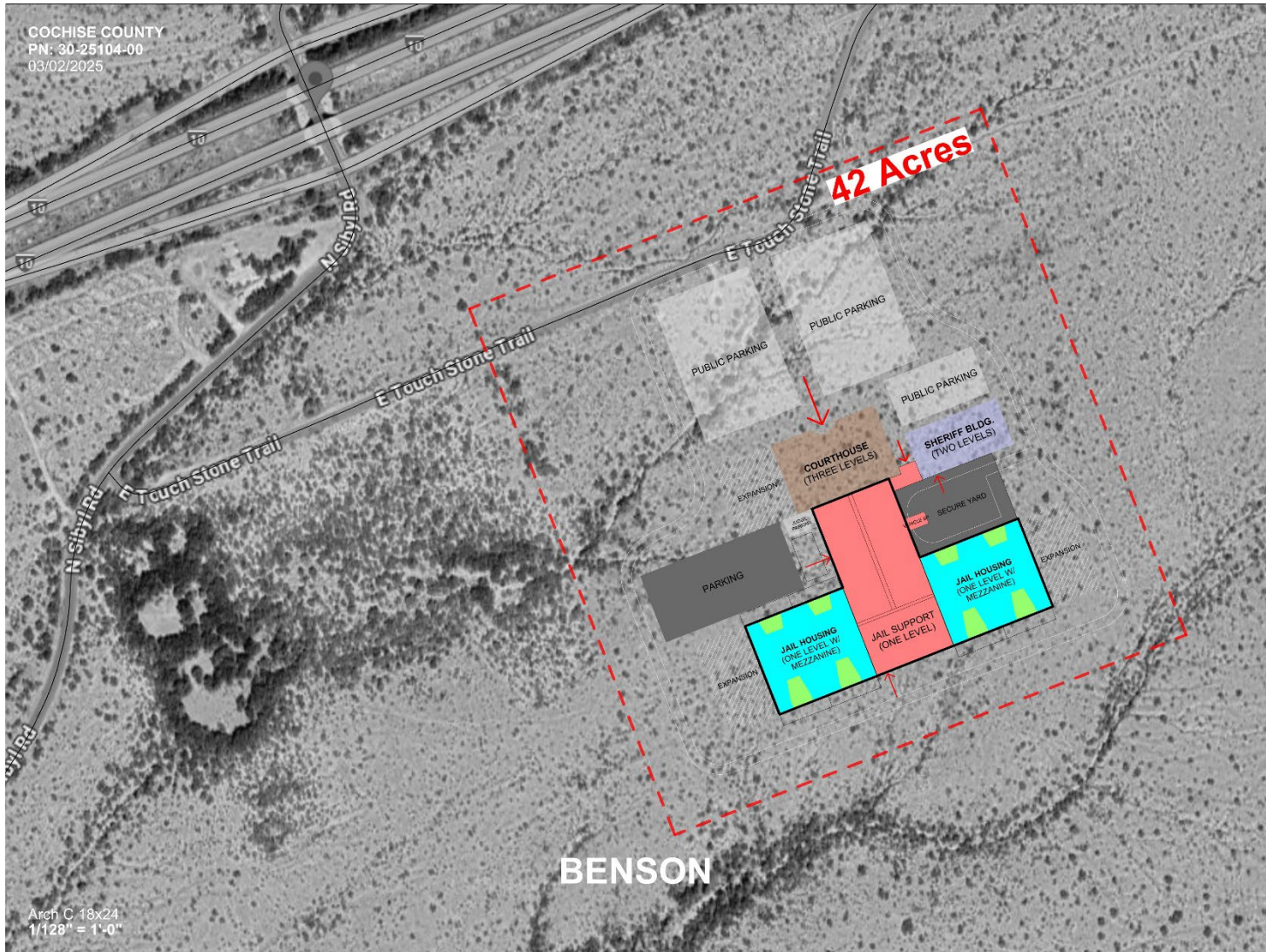
# Site Selection Criteria

## **Cochise County Jail Planning, Site Selection Criteria:**

1. Utilities Infrastructure Development (on site water & sewer or city utilities expansion)
2. Topographic Variations (extent of grading and drainage site work / 100-year flood plain)
3. Land Purchase (cost and public response)
4. Use of some existing building facilities (less new buildings)
5. Population center locations (proximity to public being served)
6. Labor work force proximity (initial jail staff, future professional judicial staff if collocated)
7. Site access from adjacent roads. (emergency services)
8. Relationship with other judicial functions



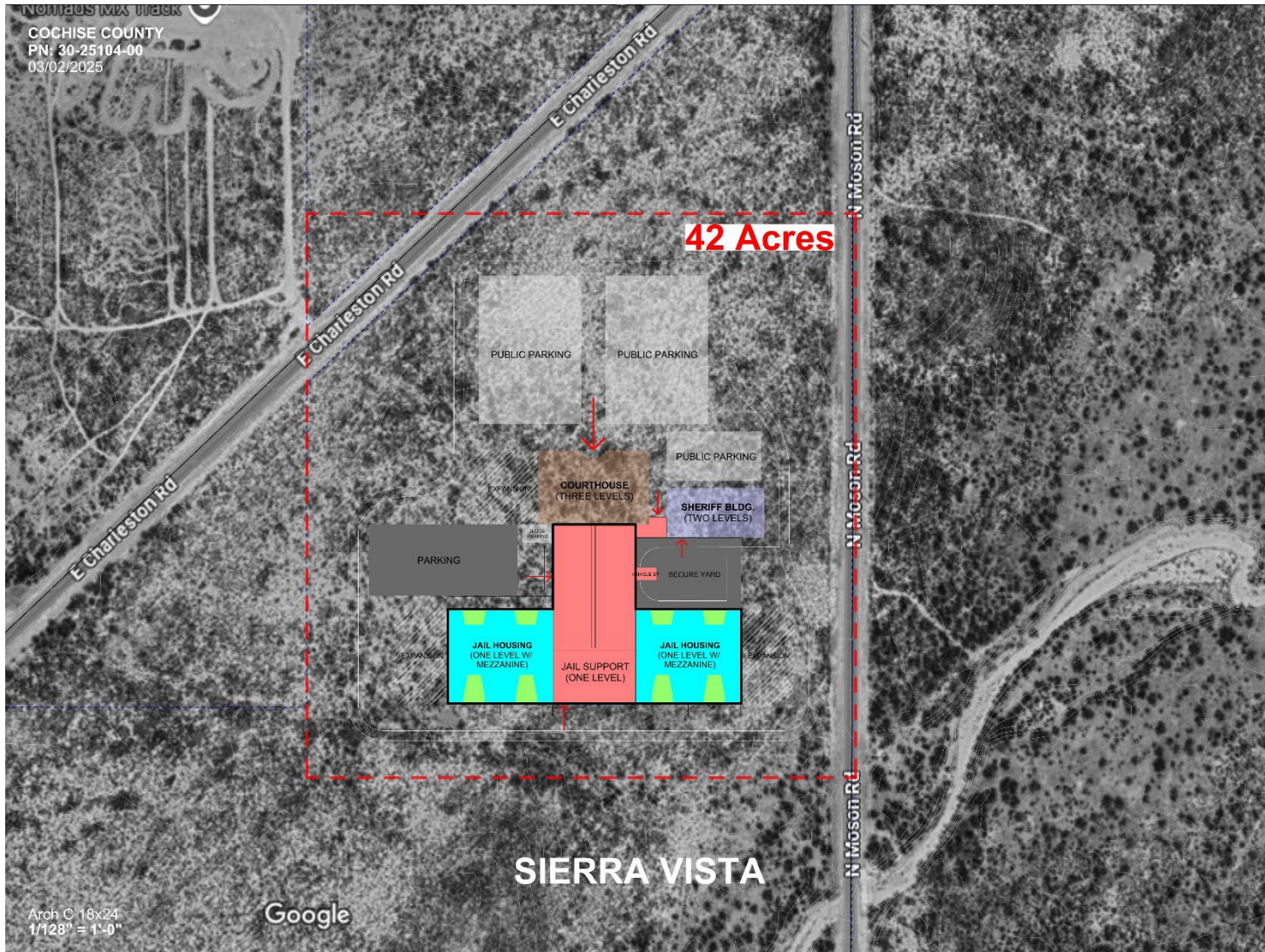
# Site Options





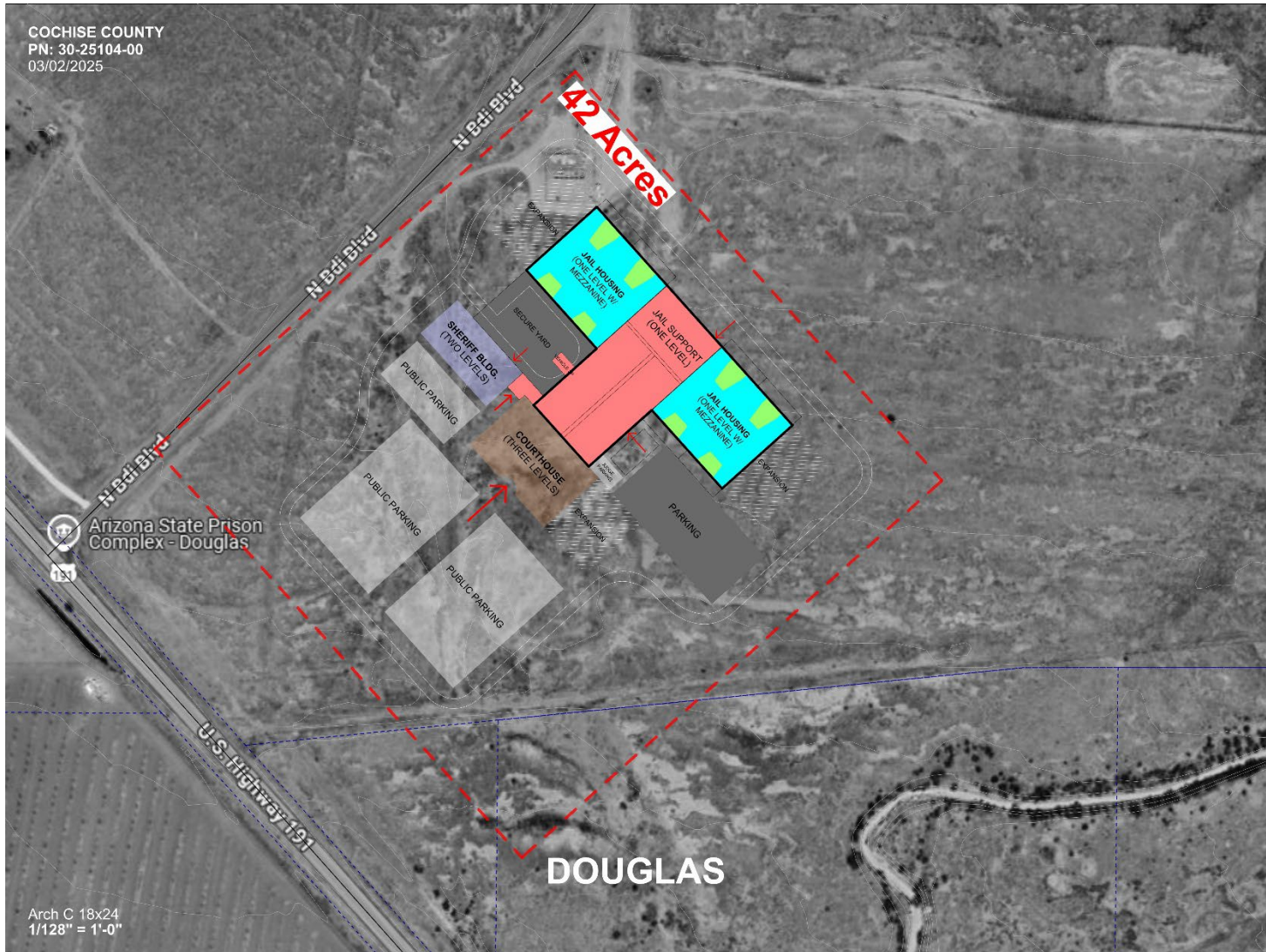


# Site Options





# Site Options







# Site Options





# Site Options





# Site Options





# Site Selection Criteria

Cochise County Jail Planning, Site Selection Criteria:							
Evaluation Topics	Possible Score	Benson	Douglas	Bisbee ( Existing)	Bisbee ( Melody)	Sierra Vista	Tombstone
		Utilities Developed	5				
Topography Difficulty	5						
Purchase Impact	5						
Existing Buildings	5						
Population Center	5						
Work Force, Detention & Judicial	5						
Site Access	5						
Judicial Functions Proximity	5						
<b>Total Scores</b>	<b>40</b>	<b>0</b>	<b>0</b>	<b>0</b>	<b>0</b>	<b>0</b>	<b>0</b>