

The background features several overlapping geometric shapes: a large teal triangle on the left, a green triangle at the bottom left, a yellow triangle at the bottom center, and a yellow diamond on the right. A teal triangle is also at the top right. A thin green horizontal line is positioned above the main title.

Presentation to Cochise County Board of Supervisors

Tres Alamos Community Alliance
(TACA) March 11, 2025

Topics



- Introduction
- 2150 N. Ocotillo Road – Sierra Mining and Crushing Operation
- Weight Limit for N. Ocotillo Road
- Unlawful Rearrangements/Alterations and Resulting Damages
- Behaviors and Performance of Cochise County Staff and Supervisors
- Requested Actions

The background features several large, overlapping geometric shapes in teal, green, and yellow. A teal parallelogram is on the left, a green parallelogram is at the bottom left, and a yellow triangle is at the bottom center. On the right side, there is a complex arrangement of overlapping teal, green, and yellow shapes, including a large yellow diamond and several smaller parallelograms and triangles.

2150 N. Ocotillo Road

Sierra Mining and Crushing Operations

Business/Industrial Operations at 2150 N. Ocotillo Road – Sierra Mining and Crushing

- The Tres Alamos Area Plan stipulates that industrial operations are not appropriate.
- TACA complaints to Cochise County about 2150 N. Ocotillo Rd. are based on the Tres Alamos Area Plan.
- TACA provided explicitly defined complaints for investigation, and requested relevant information:
 - Complaint cited blowing dust, dirt and noise pollution due to heavy truck traffic
 - Complaint cited dangers to other drivers caused by heavy trucks on 2-lane rural roadway
 - Complaint cited serious damage to Ocotillo Rd. surface
 - Complaint cited import and storage of a huge amount of biomass/trash, noting fire danger and potential pollution effects

Business/Industrial Operations at 2150 N. Ocotillo Road – Sierra Mining and Crushing

- Cochise County staff arbitrarily closed complaints without proper investigations and responses.
- Cochise County staff did not provide relevant information and explanations as requested by TACA.
- Cochise County administrator failed to act when asked to correct the lack of proper investigations and actions by county staff.
- Cochise County Board of Supervisors refused to recognize TACA complaints or respond to Notice of Claim.

Requested Actions



Specific remedial actions regarding the Sierra Mining and Crushing property 2150 N. Ocotillo Road, as requested by the Tres Alamos Community Alliance (TACA), will be identified and explained to the Board of Supervisors during this session.



Weight Limit for N. Ocotillo Road

Weight Limit and Road Damage

The materials and construction of Ocotillo Road have never been anywhere close to the acceptable standard for regular use by heavily loaded trucks.

April 1993 through September 2005:

- April 1993 - The Board of Supervisors enacted a restatement of the 12- ton weight limitation in Resolution 93-98.
- September 2005 – Board of Supervisors agreed upon cooperative upgrades were to include widening of the road, upgraded base/foundation, upgraded surface materials and improvement/solidification of road shoulders for the seven miles north of Benson. This would be done to enable a higher weight limit on this road.
 - Except for 1.8 miles at the south end of Ocotillo Road, none of the proposed pavement updates were ever done.
 - None of the widening and shoulder improvements were ever done.

Weight Limit and Road Damage

2007:

- In 2007 (and again in 2009) inspections by qualified entities cited ineffective road work and unacceptable degradation of the road.

Early 2024:

- Sierra Mining & Crushing began running large numbers of heavily loaded trucks to and from that site.
- Many neighbors filed the noted complaints with Cochise County about that trucking and related matters. Cochise County has not properly investigated or acted on the complaints.

Weight Limit and Road Damage

Early 2025:

- Truck operations to and from the property by Sierra Mining/Crushing have resumed in recent weeks.
- In the past two weeks, as the result of three different and independent inquiries to staff in the Cochise County Engineering and Highway departments, TACA has been informed that the weight limit for Ocotillo Road north of Benson is 12 tons.
 - The same county offices informed TACA that the weight limit for Pomerene Road (starting at Old Pomerene) and for Cascabel Road is 12 tons.
 - Cochise County document “Bridge and Weight Limit Restrictions” verifies the above data.
- A separate county source has stated that the weight limit for Ocotillo Road north of the railroad tracks is 40 tons.









Requested Actions

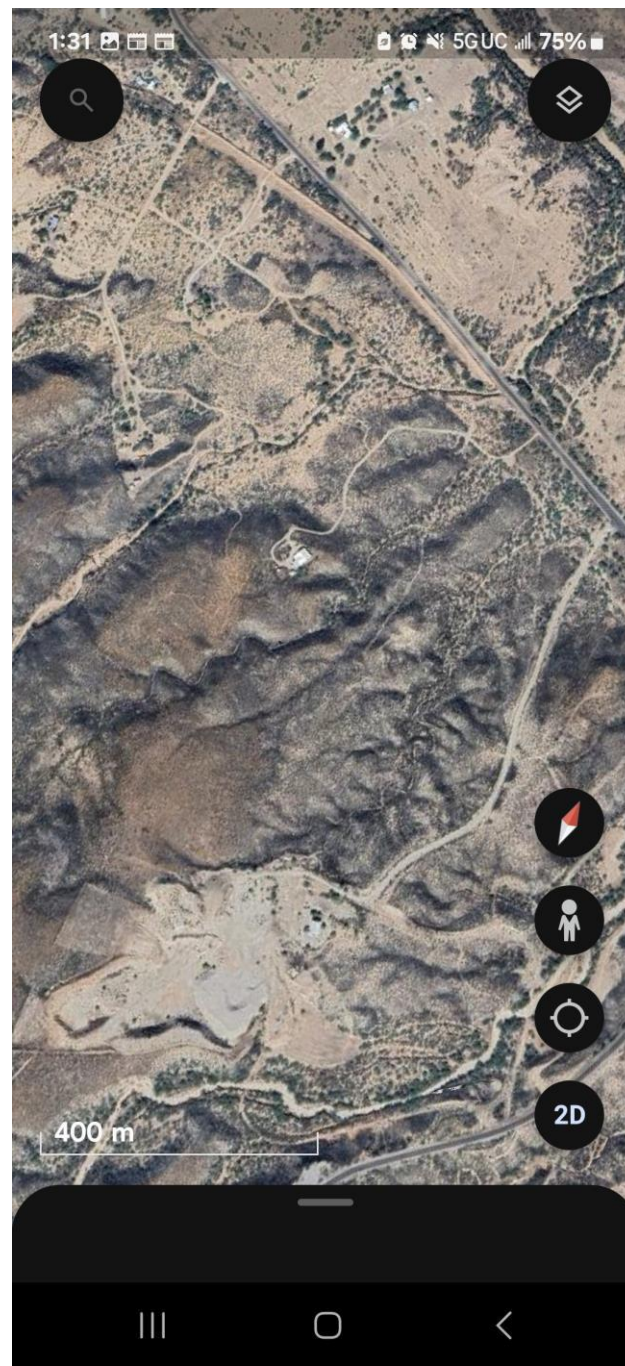
Specific remedial actions regarding the weight limit for N. Ocotillo Road, as requested by the Tres Alamos Community Alliance (TACA), will be identified and explained to the Board of Supervisors during this session.



Unlawful Alterations of Earth and Landscape with Resulting Damages

Sierra Mining/Crushing Actions

- Under Arizona law, an individual must apply and obtain approval to undertake the earth alterations noted.
- Unapproved earth alterations on Sierra Mining/Crushing property caused:
 - erosion on an adjoining private property
 - flooding on Ocotillo Road
- Those damaged as a result of such unlawful action have restorative rights, including directed removal of obstructions and restoration of the watercourse to its original state by the violator, as described in ARS 48-3613.D.



Northeasterly
view. Direction
towards Ravine &
Drive



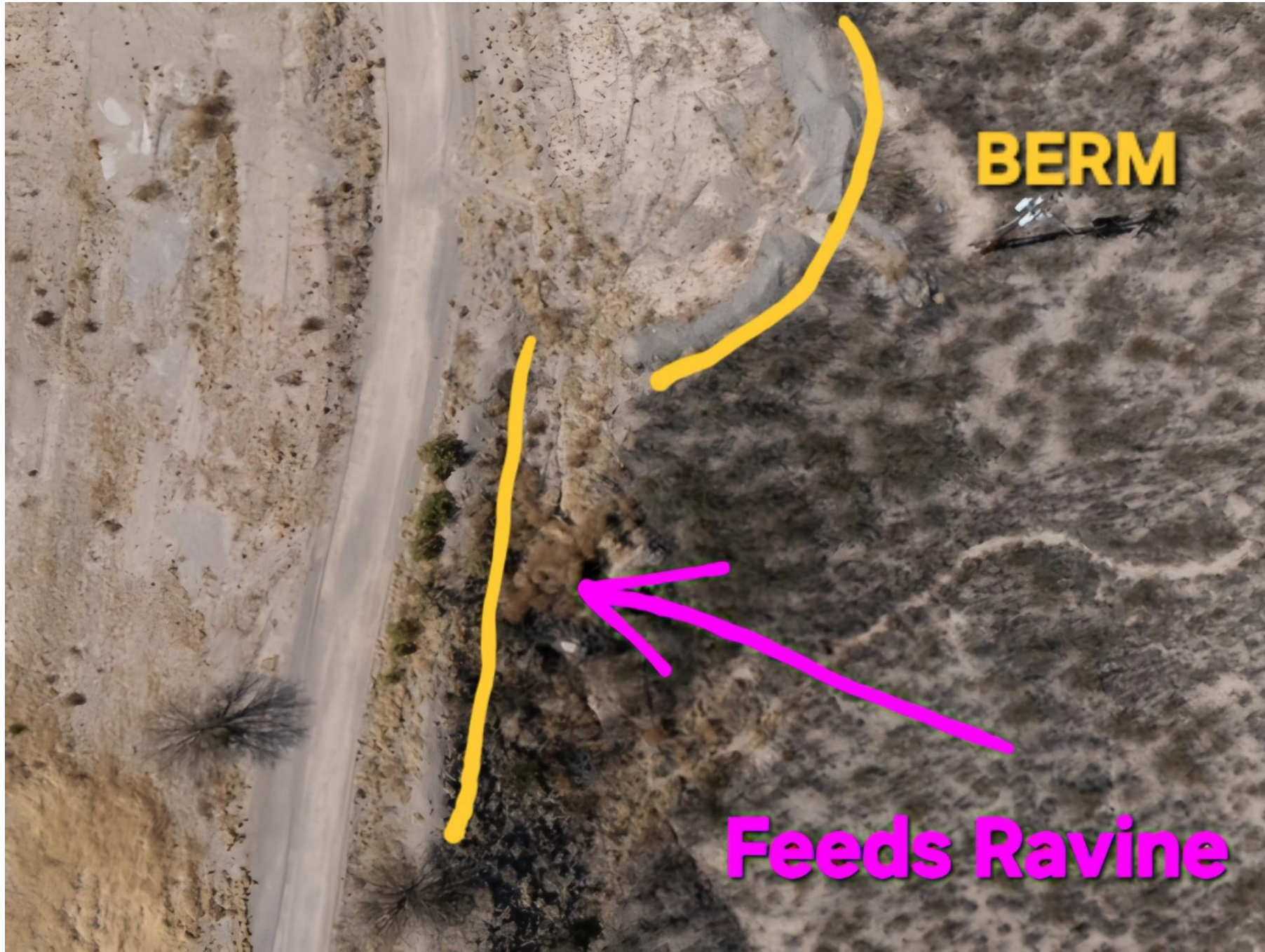






**NORTHERN END BY
ENTRANCE**

RAVINE 1 FEED











**Swale cut directing
drainage to Ravine**



















George Scott Actions

- Under Arizona law, an individual must apply and obtain approval to undertake the earth alterations noted.
- Unapproved earth alterations on George Scott property caused:
 - erosion on an adjoining private property
 - concrete trash dumping on adjoining private property
- Those damaged as a result of such unlawful action have restorative rights, including directed removal of obstructions and restoration of the watercourse to its original state by the violator, as described in ARS 48-3613.D.





























Requested Actions



Specific remedial actions regarding these unlawful alternations of earth and landscape and resulting damages, as requested by the Tres Alamos Community Alliance (TACA), will be identified and explained to the Board of Supervisors during this session.



Behaviors and Performance of County Staff and Supervisors

Requested Actions

Specific remedial actions regarding the behaviors and performance of Cochise County staff and supervisors, as requested by the Tres Alamos Community Alliance (TACA), will be identified and explained to the Board of Supervisors during this session.

Walk the walk, not just talk the talk

Cochise County Board of Supervisors Mission Statement,
Strategic Work Plan 2021-2024

*“Provide regional leadership and **effective, high-quality** services with personal and **professional integrity**.”*

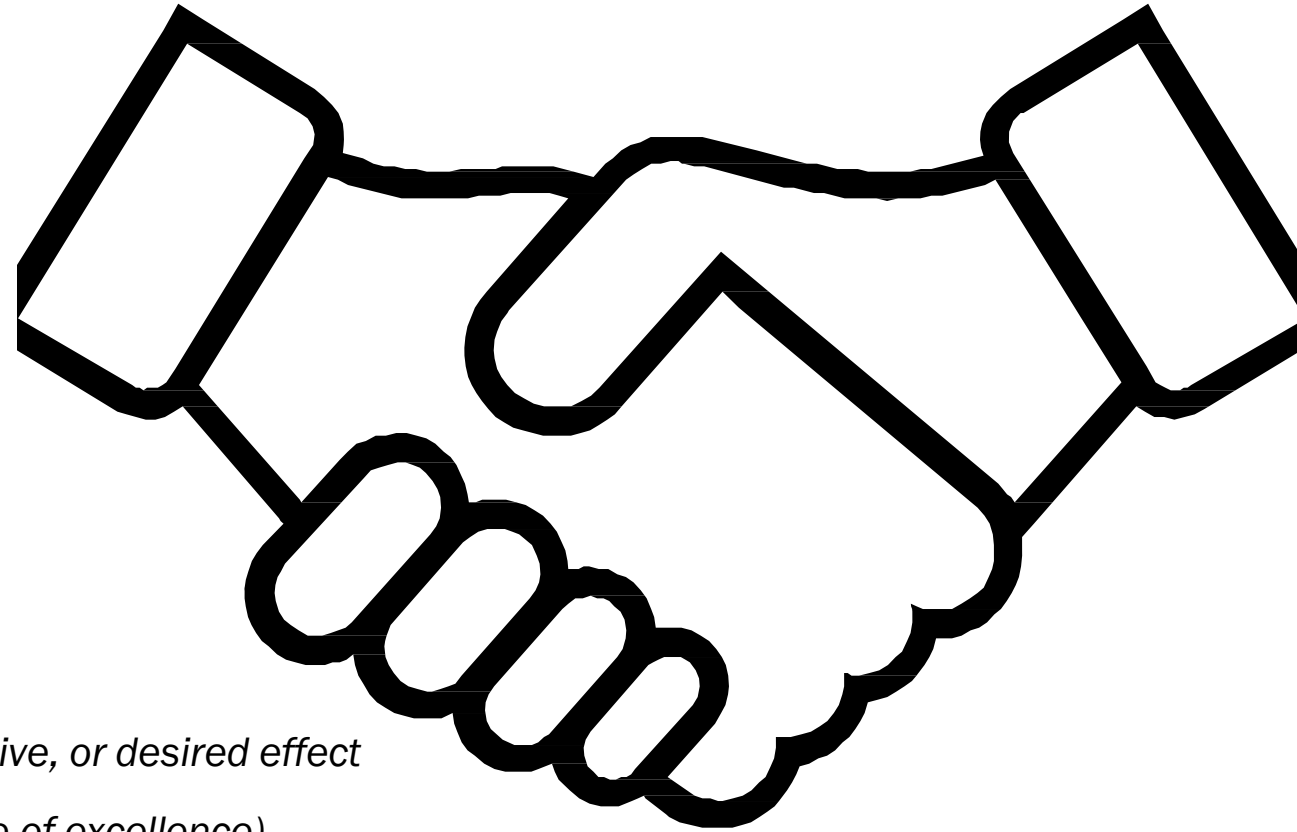
Miriam-Webster Dictionary definitions:

Effective: ready for service or action; producing a decided, decisive, or desired effect

High-quality: very good of its kind; being of high quality (a degree of excellence)

Professional: exhibiting a courteous, conscientious, and businesslike manner

Integrity: firm adherence to a code of especially moral values; the quality or state of being complete



Thank you

The Members of TACA

Email: tresalamoscommunityalliance1@gmail.com

Website: tresalamoscommunityalliance.org