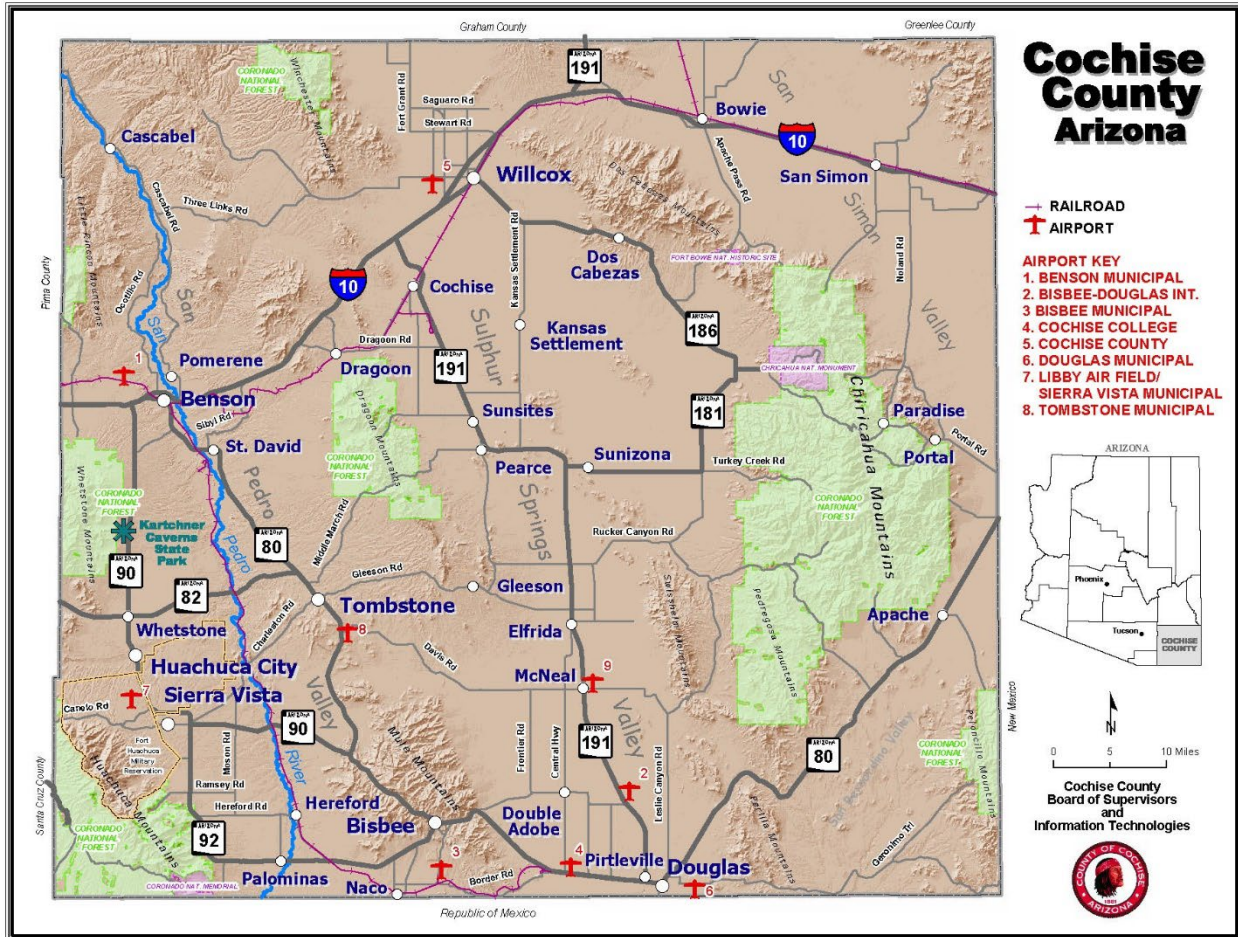


Board of Supervisors Work Session

Cochise County, Arizona has 6,209.9 square miles of land area. It is the 8th largest county in Arizona by total area. Cochise County Probation has 4 main offices in Sierra Vista, Bisbee, Benson, and Douglas with one satellite office in Willcox. Officers meet statutorily required contacts by driving from the office locations to clients' residences, work, school and treatment all over the county. The juvenile placement officer also drives to out of county placements all over the state to meet the requirements. Detention officers drive the 154 miles for 2.5 hours, one way, to transport detained youth to and from the Pinal Youth Justice Center where we are contracted to hold Cochise detained youth.



Day in the life of PO

Adult and Juvenile Probation Officers have numerous requirements under Arizona Revised Statutes and Court Rules, as well as mandates from the Judicial Code, that must be met for each client. While not exhaustive, the following list highlights key responsibilities:

- Victim Contacts – Maintain contact with victims and seek repayment of restitution, if applicable.
- Statutory Requirements and Drug Testing – Ensure DNA and fingerprinting requirements are met; collect urinalysis samples and conduct breathalyzer tests.
- Reporting and Documentation – Write various reports throughout the course of a case, serving as the "eyes and ears" of the court.
- Court Appearances – Attend court hearings and ensure clients adhere to the specific terms and conditions of each petition during their probation term(s).
- Probation Management – Initiate probation modifications or revocations as needed.
- Search and Compliance – Conduct home searches to ensure compliance with probation terms, including identifying the presence of weapons, pornography (including child pornography), domestic violence, drugs, or drug paraphernalia.
- Arrests – Arrest clients as necessary that are conducted both in the field and office setting.
- Data and File Management – Enter all case information into the electronic tracking system, manage client files, and complete required file reviews.
- Risk Assessment – Monitor the client's risk score and reassess when necessary.
- Contact and Case Management – Complete required contacts with clients and collateral sources, including schools, treatment providers, DCS, employers, and family members, to support case plan development and adherence.
- Case Planning – Develop case plans, guide clients in adhering to them, and request early termination or timely termination of probation when appropriate.

This this non-exhaustive list of work is done daily throughout the course of each term of probation multiplied by the number of clients on an officer's caseload.

In addition to these core responsibilities, officers must:

- Have a working knowledge of community resources to provide appropriate support to diverse clients.
- Stay current on drug trends and illegal activities.
- Maintain professional development and meet training requirements.
- Manage the vicarious trauma that can result from working with clients and victims.
- Collaborate with various agencies within the county and across the state for case-related matters.
- Complete annual defensive tactics refreshers and firearms qualifications (if authorized to carry a weapon).
- Attend department meetings and briefings to stay aligned with the department's mission and goals.

Again, this list is not all-inclusive but reflects the complex and demanding nature of the role.

Snapshot of Average Workload for One Field Officer

<u>Typical Field Officer specific duties</u>	Cochise Adult	Cochise Juvenile	Other Counties
• Intake	✓	✓	X
• Diversion	✓	✓	X
• Disposition report writing	✓	✓	X
• Court coverage all stages	✓	✓	X
• Office Visits	✓	✓	✓
• UA's	✓	✓	X
• DNA	✓	✓	X
• Fingerprints	✓	✓	X
• Home verification	✓	✓	X
• Work verification	✓	✓	X
• School checks	X	✓	X
• Counseling collaboration	✓	✓	X
• Adult Recovery Team Meetings	✓	✓	X
• Child Family Team Meetings	X	✓	X
• Collateral Contacts	✓	✓	X
• Programming	✓	✓	X
• Searches	✓	✓	X
• Arrests	✓	✓	X
• Field Contacts	✓	✓	X
• Victim management	✓	✓	✓
• Offender specific motions to the courts	✓	✓	X

*Other counties have specialized caseloads for these things, utilize law enforcement OR contract out for services for things such as urinalysis

**Cochise has its own Pre-Sentence and Pre-Trial Units for Adult Probation

***Officer have numerous additional case management duties to ensure offender compliance and meeting statutory requirements

Officers also participate in numerous community outreach programs:

- National Night Out
- Trunk or Treat
- Career Fairs
- Presentations at the schools
- Red Ribbon Week
- Strengthening Families

Organizational structure **Give Org Chart**

Staff Type	Current Totals	Current Vacancies
Leadership	12	2
Administrative (includes support)	17	1
Adult Standard Officers	12	1
Adult Intensive Officers	3	0
Juvenile Standard Officers	3	0
Juvenile Intensive Officers	1	0
Surveillance	4	0
Pre-Sentence	6	0
Pre-Trial	2	0
Diversion	1	1
Detention Officers	5	2
Adult Staff Totals	42	2
Juvenile Staff Totals	20	5
Department Totals	67	7

Judicial Staff Retention Rates:

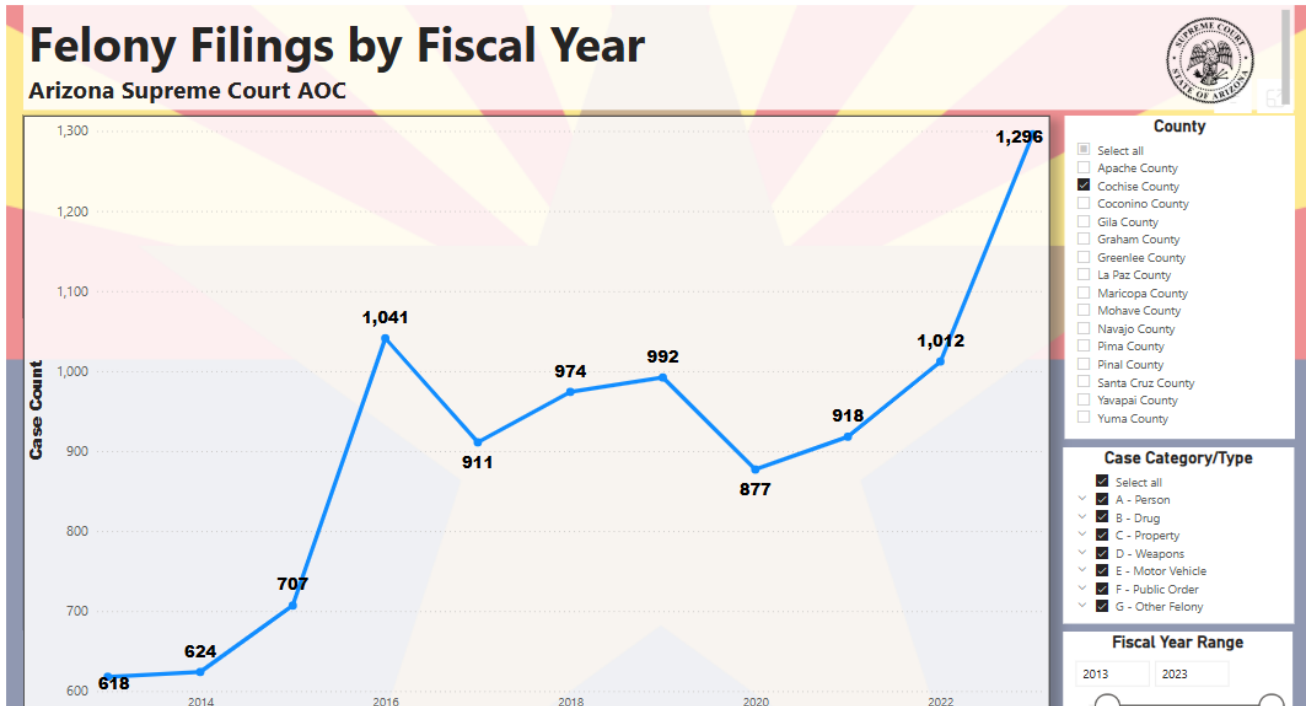
FY	12	13	14	15	16	17	18	19	20	21	22	23	24
APO	1	5	4	4	7	8	5	2	8	8	9	23	16
JPO	2	3	1	5	5	1	3	1	7	19	10	10	8

Retirement	1	4	2	4			2	1	5	1	1	3	1
Promotion		1		1	3	4			4	2	4	8	3
Reclass					1	1			5				
Discharge			2		1	1	2		1	6	2	2	8
Lateral				2	3		1	1	1	4	4	5	3
Death			1										
Resignation	2	3		2	4	3	3	1	4	9	8	15	9
Total departures	3	8	5	9	12	9	8	3	15	27	19	33	24

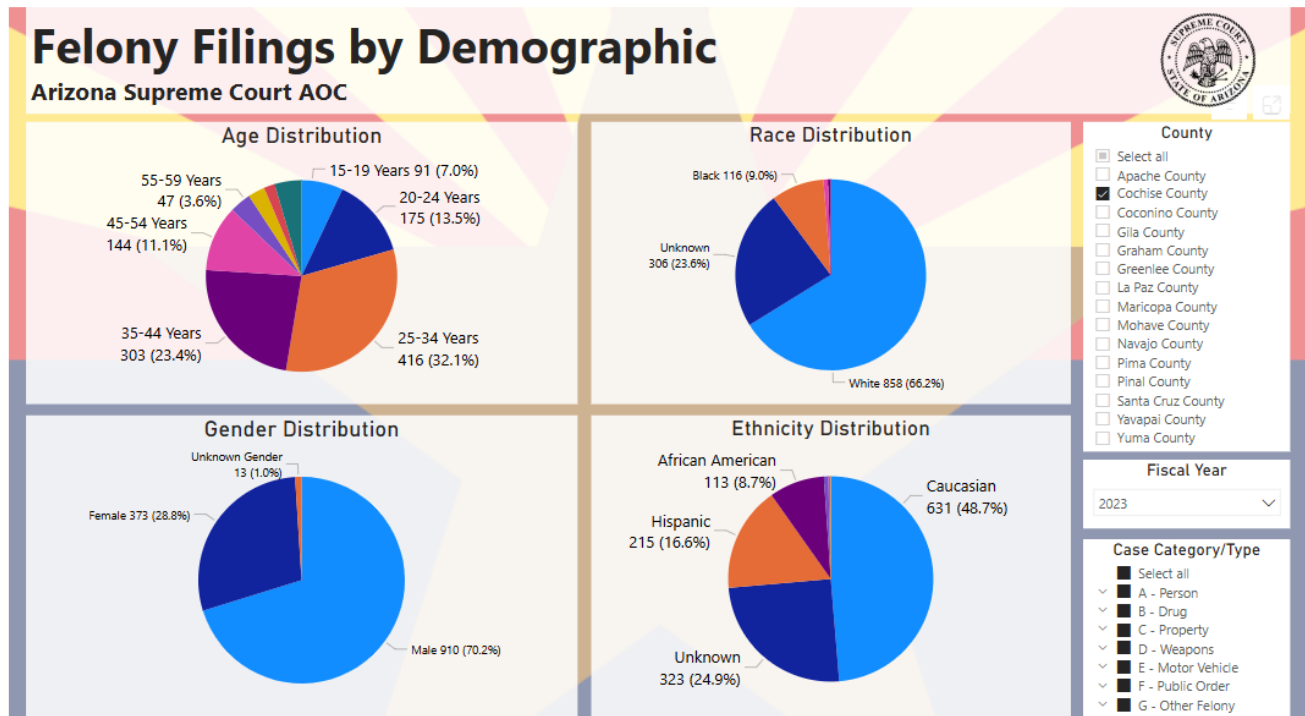
FY 12 APO JPO
 Filled
 positions 38 36

FY 24 APO JPO
 41.36 21.47

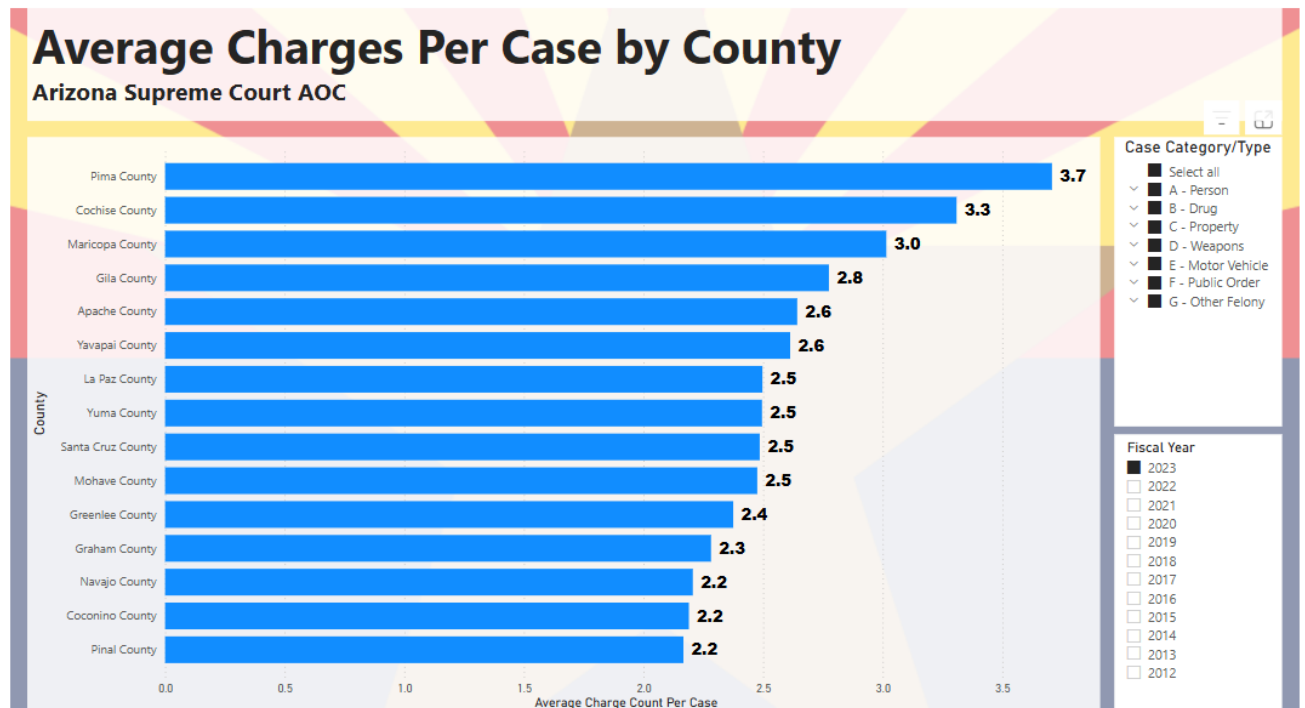
Felony Filings in Superior Court



Felony Filings in Superior Court Continued



Felony Filings in Superior Court Continued



FY24 Probation Caseload Types, Statutory Requirements, and Ratios

Caseload Type	Statutorily Required Ratio of client to officer	Clients	Officers	Ratio
Adult Standard	65:1	*703 average	9	78:1
Adult Intensive	25:2	*63 average	2	32:1
Sex-Offender Unit	x	*79 average	2	40:1
Pre-Trial	x	*40 average	1	40:1
Pre-Sentence	x	*458 Reports Written	5	92:1
Adult Out-of-County	x	503 current clients for a total of 566 cases	2	252:1
Deported	x	8 current	0 admin	
Unsupervised	x	66 current	0 admin	
Juvenile Standard	35:1	*53 average	2	27:1
Juvenile Placement	35:1	*9 average	x	9:1
Juvenile Intensive	15:1	*12 average	1	12:1
Diversion	x	*401 average	2	201:1
Dispositions	x	*69 Reports written	5	14:1

*Requirements are per Arizona Code of Judicial Administration 6-201.01, 6-202.01, 6-301 & 6-302

*For a portion of FY24 APO had vacancies and was one of a number of counties who were directed by the AOC to get the ratios into compliance by filling vacancies

Revocation Rates and Releases

Juvenile Petitions	FY 24	Adult Petitions	FY 24
Petitions Filed	126	Revocation	113
Petitions to Revoke	19	Petitions to Revoke	166
		New Felonies	36

Juvenile Div/Prob Releases:	FY 24	Adult Discharges:	FY 24
Successful	408	Terminated/Early Terminated	430
Unsuccessful	38	Reinstatements	IPS=32 Std=30
ADJC	8		

Average Length of Time on Probation

FY24	JIPS	STDP	Diversion
Avg. Days	248.44	221.06	48.5

Juvenile Diversion is a 30-60day program

AZYAS = Arizona Youth Assessment Score Risk score which reduced by 2.65 points over the term of Juvenile probation in FY24 (we don't have this for APO)

FY24	#SUCC Probation Terms	Avg Starting AZYAS Score
	27	6.85

FY24	#SUCC Probation Terms	Avg Ending AZYAS Score
	27	4.2

	IPS	STDP	Sex-Offenders
Avg. length of probation	3years	3years	Typically, Lifetime Sentenced

Snapshot of Current Caseload Numbers

Adult IPS Cases	Juvenile JIPS Cases
55	4
Adult Standard Cases	Juvenile Standard Cases
740 of which 148 are High Risk	13 of which 4 are High Risk

*Contacts must be on separate days, random/varied times; shall include contact at home, in evenings, on weekends and holidays.

*Reference the Contact Requirements sheets

Give the attached Contact Requirement Sheets (4 in total)

*Adult Intensive requirements are per Arizona Code of Judicial Administration 6-202.01

*Adult Standard requirements are per Arizona Code of Judicial Administration 6-201.01

*Juvenile Intensive requirements are per Arizona Code of Judicial Administration 6-302

*Juvenile Standard requirements are per Arizona Code of Judicial Administration 6-301

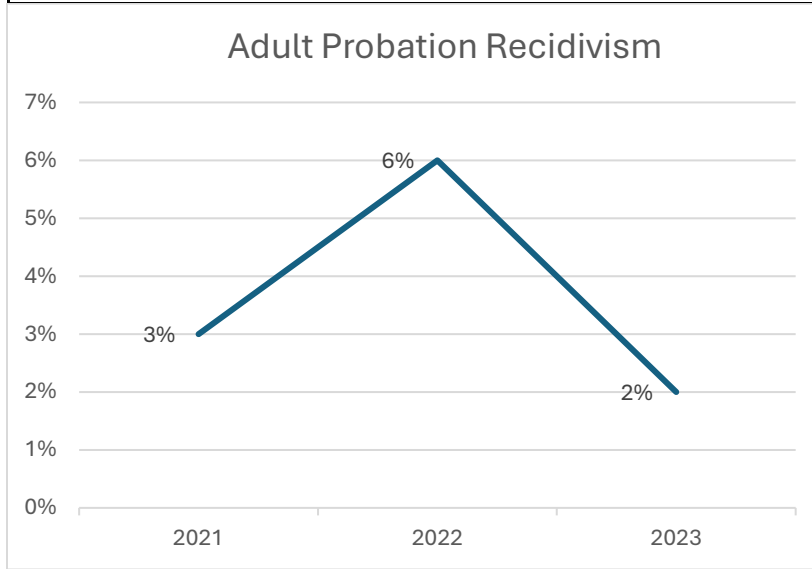
Specialty programs that we lack compared to other counties

<u>Specialty Programs</u>	Cochise Adult	Cochise Juvenile	Other Counties
• Pre-Sentence Report Writing	✓	X	X
• Juvenile Report Writing Unit	X	X	✓
• Pre-Trial Services	✓	X	✓
• Sex Offender Unit	✓	X	✓
• Warrant Unit	X	X	✓
• Diversion Intake	X	✓	✓
• Restitution Assistance Initiative	X	✓	X
• Drug Court	X	X	✓
• Mental Health Court	X	X	✓
• CARE Court	✓	X	X
• Youth Drug/Alcohol Programming	X	✓	✓
• Youth Computer Based Resources	X	✓	✓
• Strengthening Families	X	✓	✓
• Moral Reconation Therapy	✓	✓	✓
• Cross Over Youth Practice Model (CYPM)	X	✓	✓
• GPS	✓	✓	✓
• Veteran's Court	X	X	✓
• Domestic Violence Court	X	X	✓
• Teen Court	X	X	✓
• Homeless Court	X	X	✓
• Community Court	X	X	✓
• Restitution Court	X	X	✓
• Probation Dogs	X	X	✓

*Other counties such as Maricopa, Pima, Graham, Coconino, Pinal

Recidivism rates (successful completions vs. revocations)

Adult Probation Recidivism by FY	2021	2022	2023
Total # Adults Terminated from Probation (Unduplicated)	448	398	402
Total # Adults Succ Terminated from Probation (Unduplicated)	299	271	255
% Adults with Successful Prob Completions	67%	68%	63%
Total # Adults with new criminal convictions within 1 yr of successful completion of probation	9	16	5
% Adults with new criminal convictions within 1 yr of successful completion of probation Probation Recidivism	3%	6%	2%



* Probation Recidivism Definition: Within 1 year of successful completion of probation, % that were convicted of a subsequent criminal offense.

** Probation Recidivism calculated 1 year after successful termination.

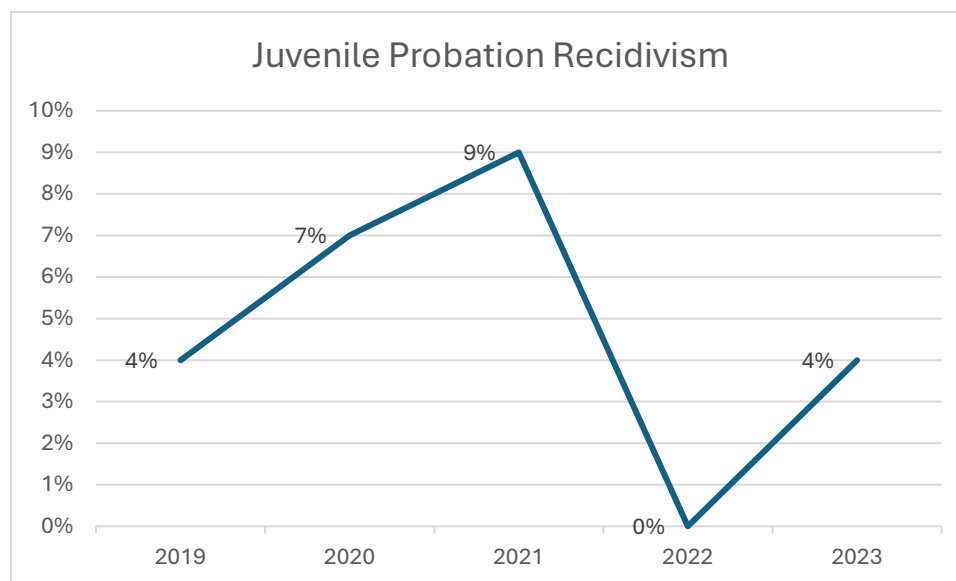
Recidivism is 1 yr behind.

Recidivism rates (successful completions vs. revocations)

FY23 Diversion Recidivism				
Reporting Period: 07/01/2022 to 06/30/2023				
Case Type	Total # SUCC Cases	Total # New Complaints w/in 365 Days	% of Cases w/ New Complaints w/in 365 Days	
DIV/PFA	371	61	16.00%	

***Recidivism Definition:** Within 1 year of successful completion of Diversion, % that received new delinquent referral.

Juvenile Probation Recidivism by FY	2021	2022	2023
Total Juveniles Terminated from Probation (Unduplicated)	109	49	58
% Juveniles with Successful Prob Completions	77%	57%	45%
Total Juveniles successfully released with referrals within 1 yr of successful completion	13%	26%	19%
Probation Recidivism	9%	0%	4%



* Probation Recidivism Definition: Within 1 year of successful completion of probation, % that were convicted of a subsequent criminal offense.

** Probation Recidivism calculated 1 year after successful termination.

Recidivism is 1 yr behind.

Detention

FY 24 ALOS	Days Juvenile Detained in this month	Total Juveniles held in month	Monthly ALOS	Pinal Billing Invoice Total
Jul-23	22	2	11.0	\$7,634.00
Aug-23	79	6	13.2	\$27,413.00
Sep-23	60	7	8.6	\$20,820.00
Oct-23	80	7	11.4	\$27,760.00
Nov-23	84	4	21.0	\$29,148.00
Dec-23	92	5	18.4	\$31,924.00
Jan-24	99	6	16.5	\$34,353.00
Feb-24	35	2	17.5	\$12,145.00
Mar-24	68	7	9.7	\$23,596.00
Apr-24	135	7	19.3	\$46,845.00
May-24	36	4	9.0	\$12,145.00
Jun-24	77	4	19.3	\$26,719.00
FY24 ALOS	867	61		\$300,502.00
Monthly Averages	72.3	5.1	14.6	\$25,042

Detention	FY24
Transports	80
ADP	2.4
ALOS	14.6

ADP=Average Daily Population
 ALOS=Average Length of Stay

FY24	Days Juvenile Detained	Total Juveniles held in month	Monthly ALOS	Reasons detained*
Jul-23	22	2	11.0	PTR Warrant-1
Aug-23	79	6	13.2	New Crime (F)-3, PTR-1, ACIC Warrant (FTA)-1
Sep-23	60	7	8.6	New Crime (F)-1, New Crime (MM)-1, ACIC Warrant (FTA)-1
Oct-23	80	7	11.4	New Crime (F)-3, PTR-1, PTR Warrant-1
Nov-23	84	4	21.0	PTR-1, PTR Warrant (Pima)-1
Dec-23	92	5	18.4	New Crime (F)-1, PTR-2
Jan-24	99	6	16.5	New Crime (F)-3
Feb-24	35	2	17.5	No new detainments
Mar-24	68	7	9.7	New Crime (F)-1, PTR-3, PTR Warrant-1, Warrant (FTA)-1
Apr-24	135	7	19.3	New Crime (F)-3
May-24	36	4	9.0	Warrant (Int Monitor Dev)-1, Warrant (out of state)-1, PTR-1
Jun-24	77	4	19.3	PTR Warrant-2
FY24	867	61	14.6	

*Reasons detained reflect new monthly admissions only

Detention Continued

	Average length of time to complete
Intake Screening Call	0.5hour
Intake in Cochise	1.5hours
Release in Cochise	0.75hour
Intake or Release at Pinal	0.75hour
Drive to or from Pinal	2.5hours
Total uninterrupted officer time for one intake/transport	8.5hours

*FY24 data

*Detention Officers also dispatch all radio contact for Adult & Juvenile Probation & Surveillance Officers who are conducting field work as required and outlined and in the probation contact requirements sheets above per Code

*Detention Screening & Transport runs 365/7/24 – officers are on duty even when not on site

*Detention Officers have to be ready to intake and transport or go pick up a released youth at all times

*Arizona Juvenile Detention Standards Section: III A 13 Transporting Juveniles requirement for transports is: Preferred – 2 officer transports 1 officer of the same gender. Can have 1 officer complete transports with the officer being of the same gender AND Audio-Visual equipment.

Share weapons Slide Show from Judge Thorn's People, Places & Things

Victim Services

- **During FY 2024, 43 youth participated through the online version of the Victim Impact Program.**
- **RAI Program** RAI Restitution Assistance Initiative Program. Juvenile Probation is implementing a grant funded program where juveniles can perform community service hours and be compensated at minimum wage, with all wages going directly to restitution.

Snapshot of Fines Paid, Community Service Hours

	Paid/Completed
Adult Fines & Fees	
Adult Restitution	\$105,055.17
Juvenile Restitution	\$9,653.03
Adult Community Work Service	IPS= 235 Standard= 7,135
Juvenile Program Hours	JIPS/Standard/Diversion=1,589

*FY24 Data