

A desert landscape at sunset. The sky is filled with dramatic, dark clouds illuminated from below by the setting sun, creating a mix of deep blues, purples, and warm oranges. In the foreground, a dirt path winds through a desert scrubland, leading towards a small, shallow pond that reflects the colorful sky. The vegetation includes various cacti, including saguaros and cholla, and low-lying shrubs. The overall mood is serene and natural.

Public Works Work Session

Director Jason Faccio

Fleet Update

- Replacement Vehicles – 17 out of 18 received
- Upfits
 - In-house – 16
 - Outsourced – 5
- Auction completed
- Budgeted Replacement Equipment in New FY
 - Solid Waste – Walking Floor, Scraper Front Engine, High Side Trailer, Transport Truck, In-Frame, and Roll-Off Truck
 - Highways – Chip Spreader, Road Grader, and Dump Truck

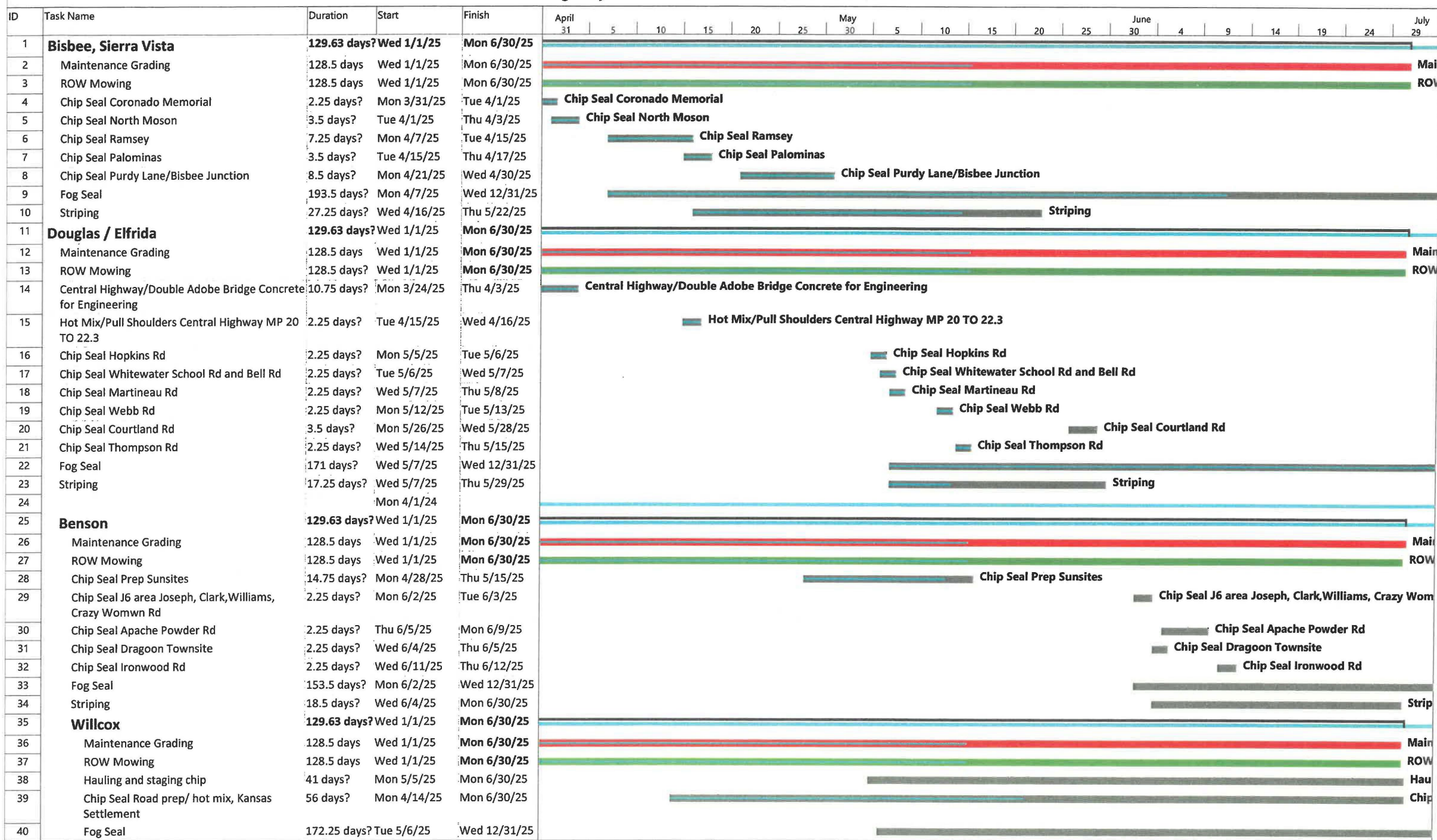


ANY
QUESTIONS?



Highways Update





Future Projects

- **Kansas Settlement**
 - **Double Chip Seal - 20 miles**

- **Dragoon Road**
 - **Contracted through Sunland Asphalt**
 - **Single Chip Seal & Crack fill – 13 miles**



Solid Waste





Public Works

As of April 2025

Tons Weighed and Charged

66,874

Current Tipping Fee is \$64.00 Per Ton

Total Revenue

\$5,213,245

Expenses

Payroll

\$1,985,683

Operations & Maintenance

\$501,689

Heavy Fleet Equipment Operations & Maintenance

\$1,283,524

Heavy Fleet Equipment Replacement

\$270,840

Transfer Out to Landfill Closure Fund

\$172,372

Transfer Out to Capital /Future Cell Development

\$750,000

Transfer Out to Capital /Transfer Station Improvement

\$166,667

Total Expenses

\$5,130,774

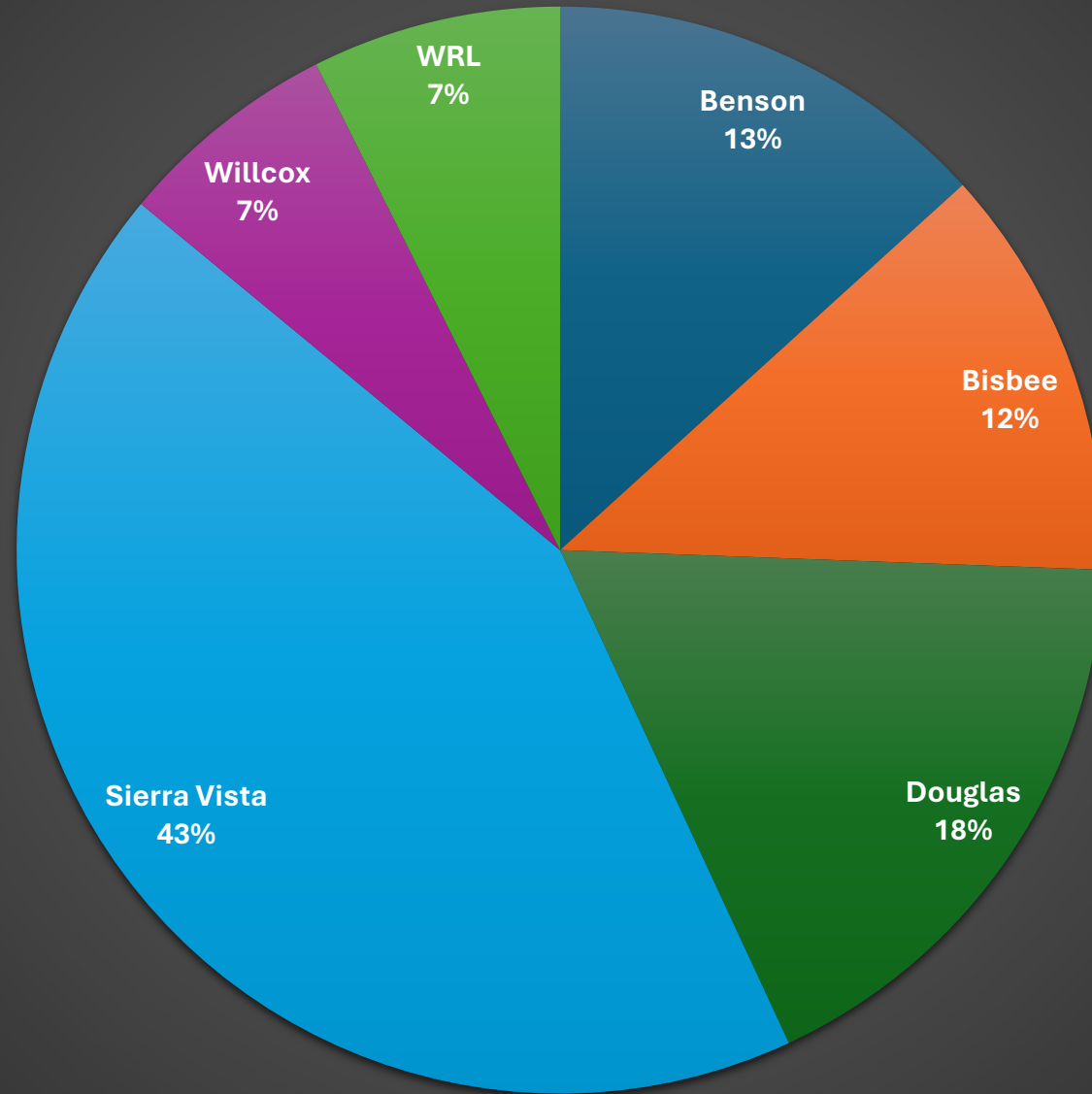
\$82,471



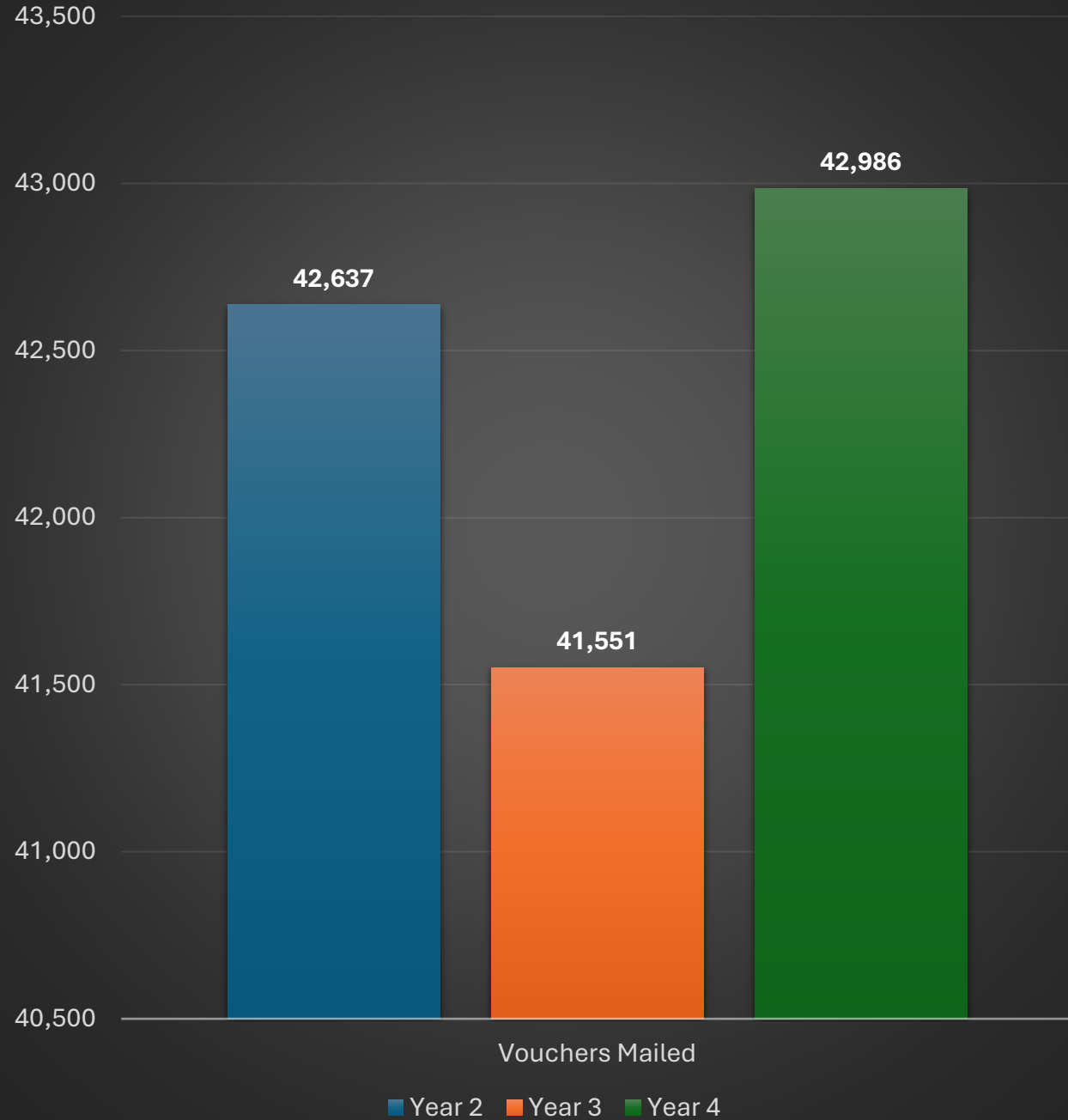
Douglas Transfer Station Re-Construction Complete



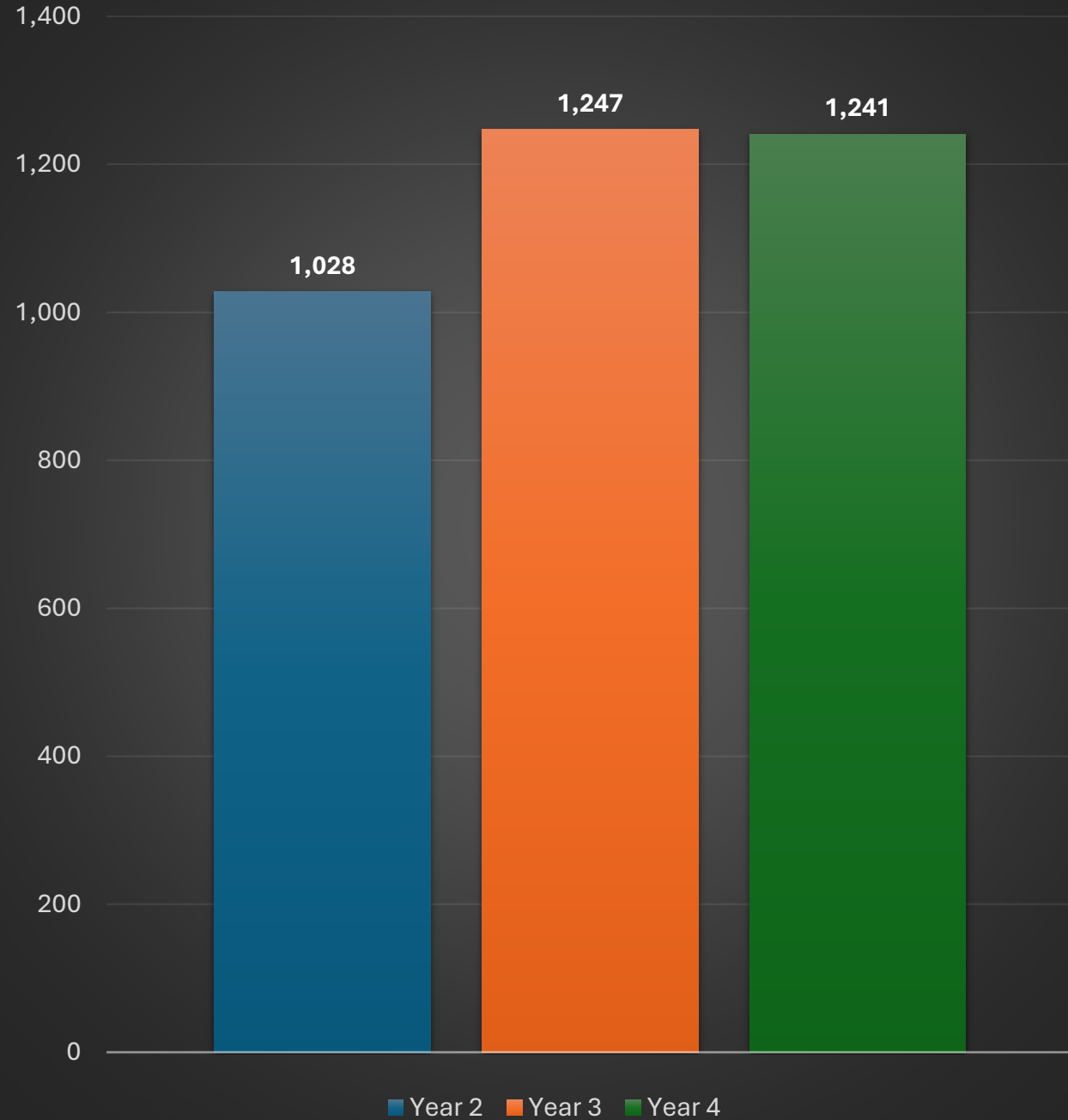
Vouchers Redeemed at Urban Transfer Stations



Voucher's Mailed



Voucher's Returned by USPS



Vouchers Redeemed

