

COCHISE COUNTY

Cochise County New Jail Site Location Discussion

July 1, 2025



Public Programs...Personal Service

New Jail Site Discussion

- Six (6) sites were evaluated as part of Jail Planning Study
- One site (Sierra Vista) removed from consideration due to conservation easement impact on site
- Two (2) highest ranked sites:
 - Bisbee (Existing Jail)
 - Bisbee (Melody Lane)
- Tombstone site



COCHISE COUNTY

Site Options

Bisbee Existing Site (203 N. Judd Drive)

- Steep terrain with limited buildable space
- New facility integrated with hillside and existing access roads
- Existing utilities in place, though water pressure improvements needed
- Strategic reuse of existing buildings available for new facility. Training center, firing range, etc.

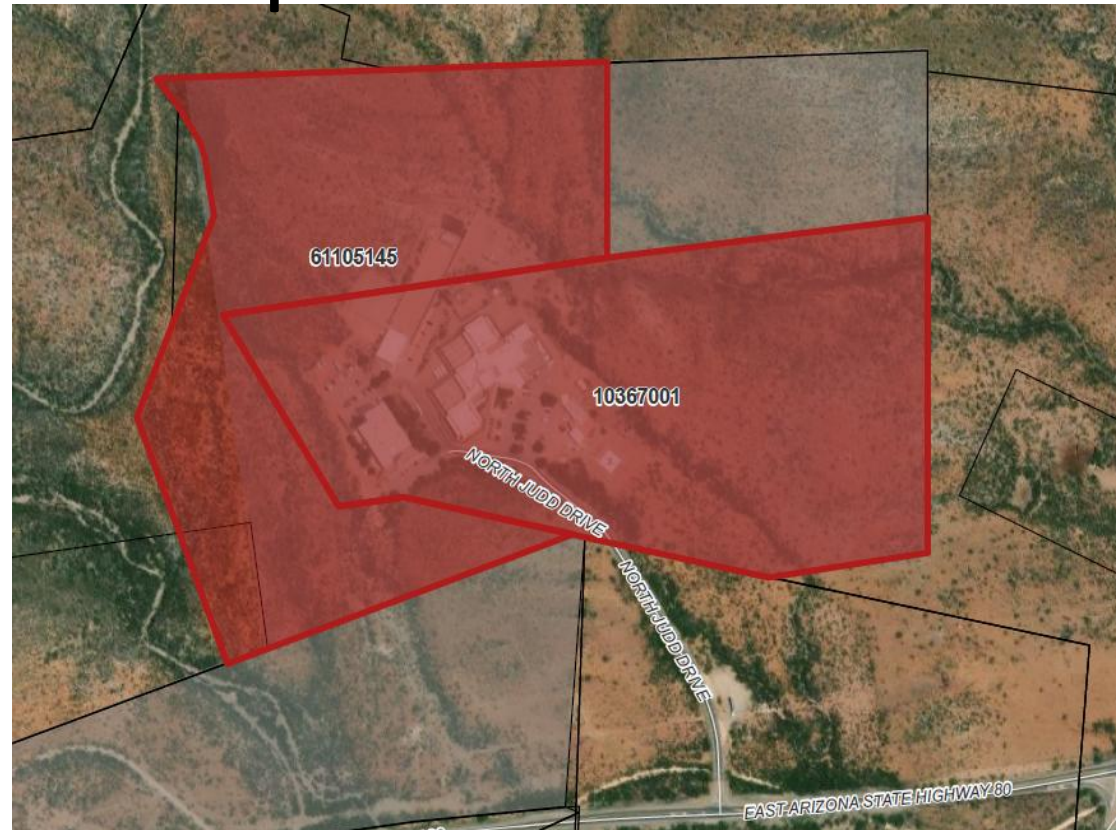


COCHISE COUNTY

Site Options

Bisbee Existing Site (203 N. Judd Drive)

- Existing Cochise County property
 - Parcel 611-05-145
 - 29.5 acres
 - Parcel 103-67-001
 - 35.5 acres
- Adjacent properties owned by Phelps Dodge/Freeport-McMoran Corp

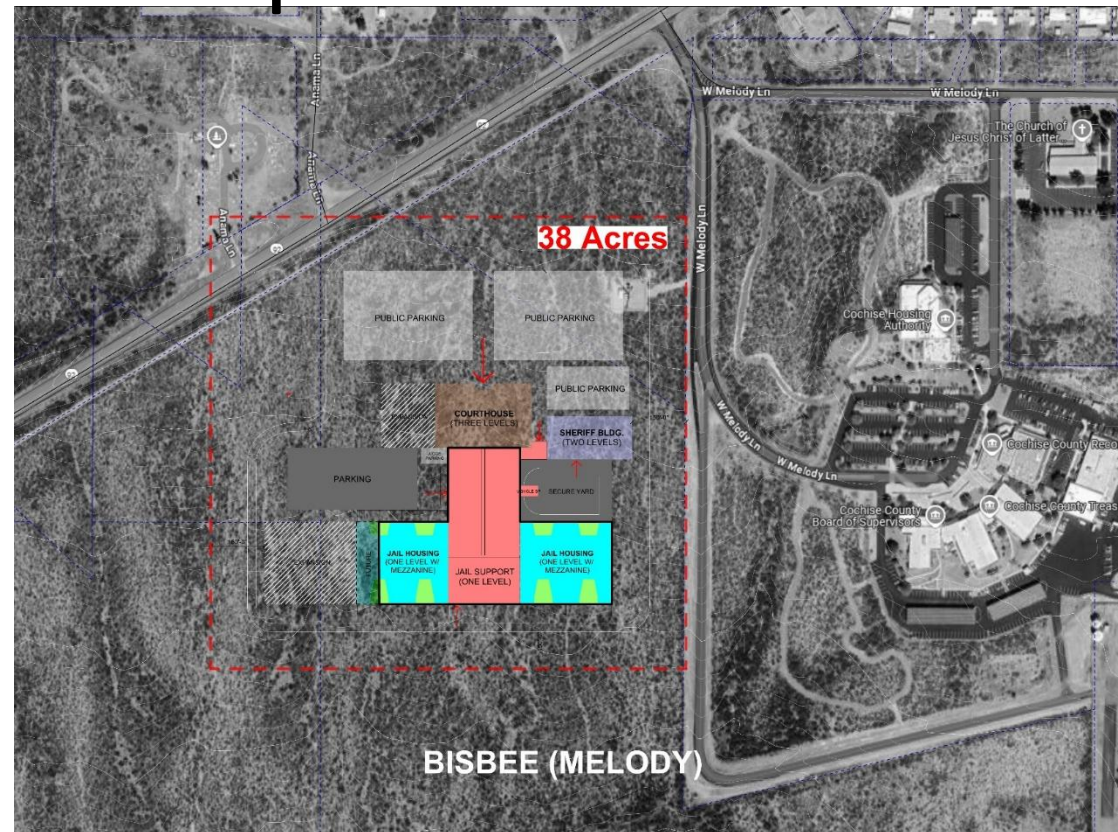


COCHISE COUNTY

Site Options

Bisbee Melody Site (SR-92 & Melody Lane)

- Near County Admin Complex with access to existing infrastructure and support
- Jail positioned to integrate with existing County facilities and buffer highway noise
- Utilities readily available on site (water, sewer, electric, gas, telecom)
- Gently sloped topography supports functional building placement and future build-out

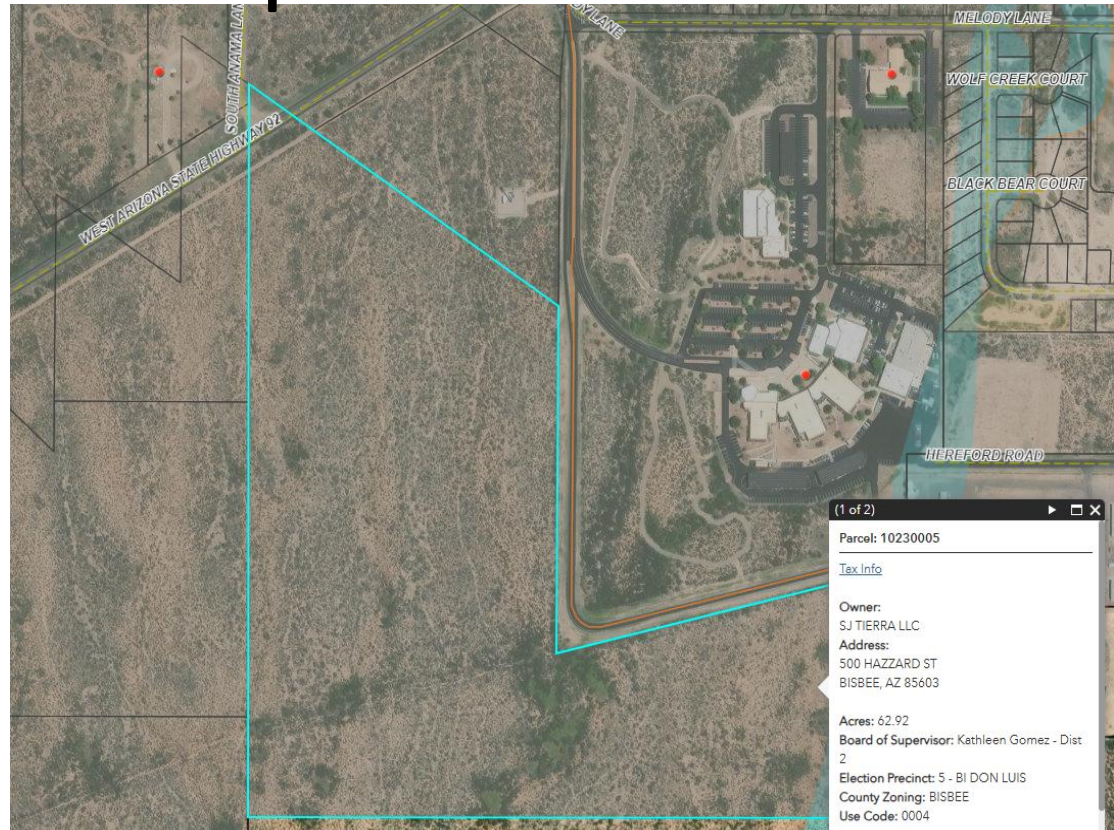


COCHISE COUNTY

Site Options

Bisbee Melody Site (SR-92 & Melody Lane)

- Private property – large parcel adjacent to existing County Administrative Complex
 - Parcel 102-30-005
 - 62.9 acres
- Parcels at intersection of SR-92 & Melody Lane
 - Parcel 611-05-061 (private property)
 - 8.7 acres
 - Parcel 102-30-115B (county owned)
 - 1 acre



COCHISE COUNTY

Site Options

Tombstone Site (SR-80 & Davis Road)

- Located near Tombstone Airport with moderate slope and desert vegetation
- Jail oriented for visibility from Davis Rd and SR-80, set on higher elevation
- No nearby utilities; 3-mile extensions needed for power and gas
- Telecom cable available adjacent to SR-80
- On site sewer plant & water system needed
- Highest construction cost due to utilities

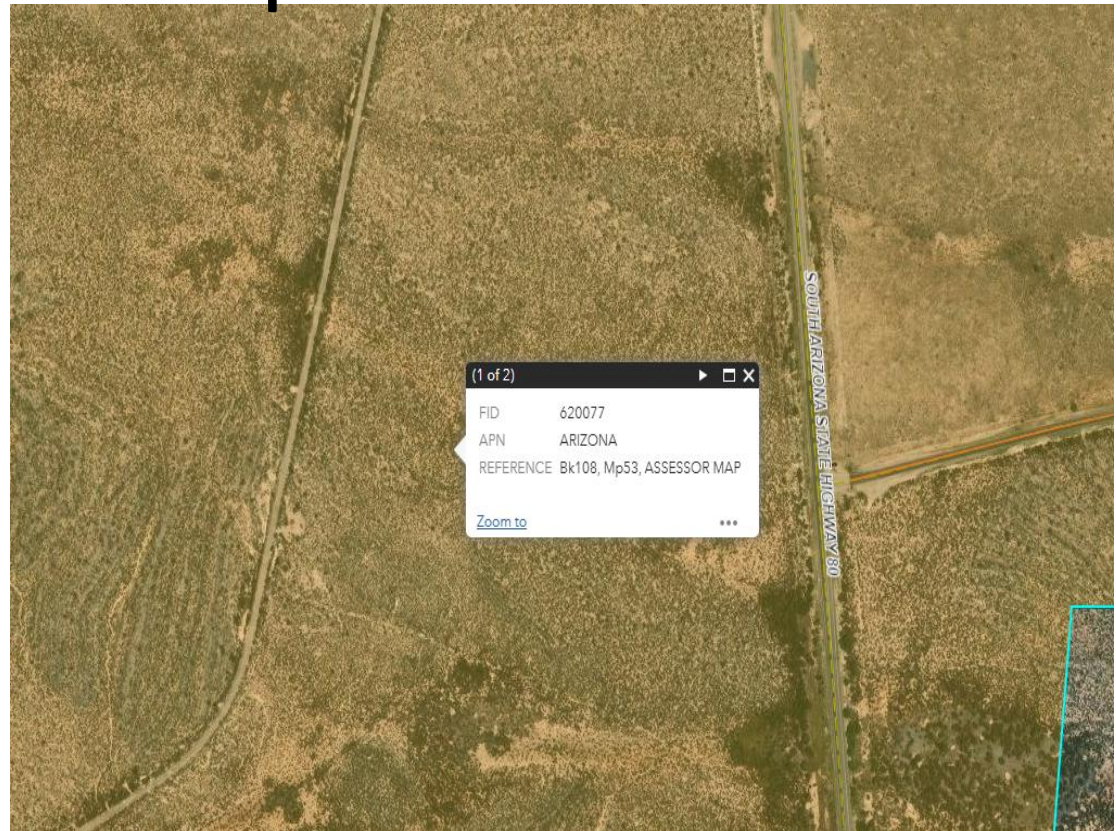


COCHISE COUNTY

Site Options

Tombstone Site (SR-80 & Davis Road)

- Property ownership - State of Arizona

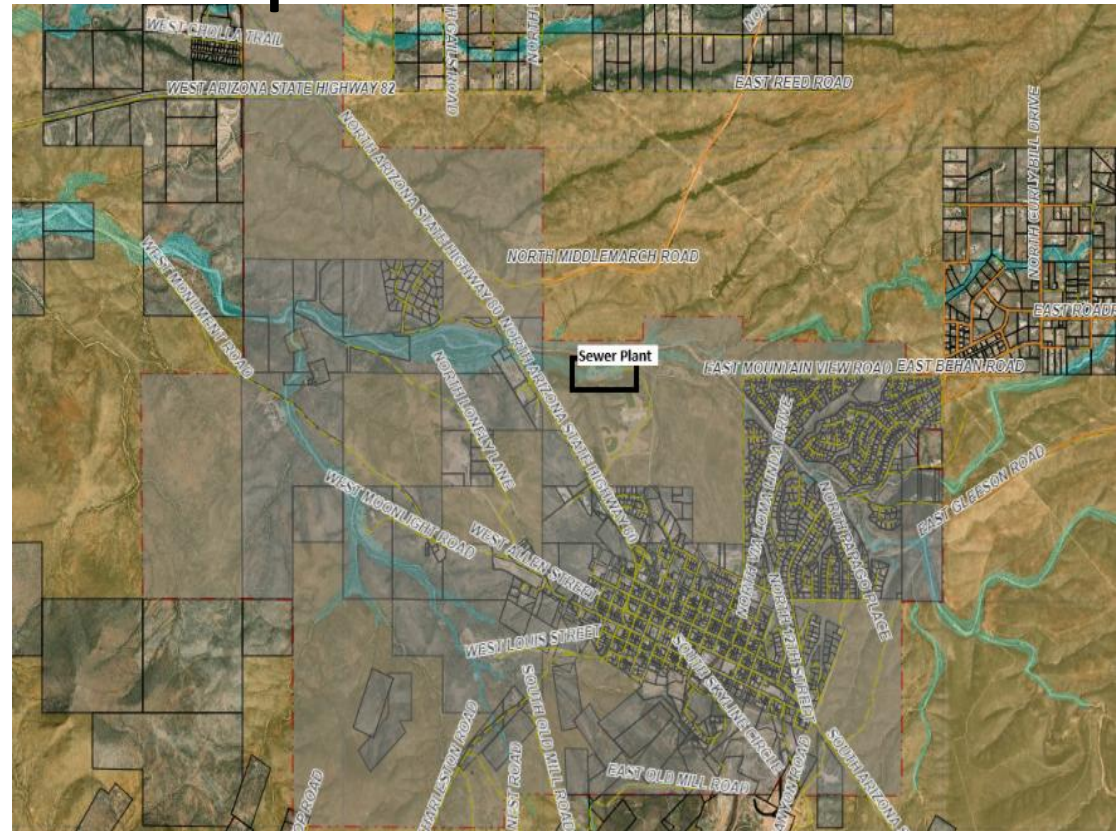


COCHISE COUNTY

Site Options

Tombstone Area

- Site location would need to be closer to available utilities from Tombstone and adjacent to highway(s) to be comparable in cost to higher ranked (lower cost) options



COCHISE COUNTY

Discussion



Public Programs...Personal Service