

COUNTY SUPERVISORS ASSOCIATION

Cochise County Board Briefing

57th Legislature, First Regular Session

08.05.25



Why CSA?



We are an Association of Arizona's 15 county governments.

We do non-partisan research and policy work to support decision making at the county, state, and federal level.

Counties created CSA because it is more effective to centralize this work.

Each county benefits from what we do and benefits from collaborating with each other.

The result of this is better government and better public service.





CSA Board of Directors

All 61 County Supervisors from Arizona's 15 counties

Executive Committee



President
Hon. Lynne Pancrazi
Yuma County



President Elect
Hon. Alton Shepherd
Apache County



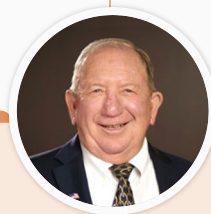
First Vice President
Hon. Rex Scott
Pima County



Second Vice President
Hon. Mary Mallory
Yavapai County



Third Vice President
Hon. Paul David
Graham County



Immediate Past President
Hon. Stephen Q. Miller
Pinal County

Legislative Policy Committee

Apache County – Alton Shepherd
Cochise County – Frank Antenori
Coconino County – Patrice Horstman (Alt. Lena Fowler)
Gila County – Steve Christensen
Graham County – Paul David

Greenlee County – William Wearne
La Paz County – Duce Minor
Maricopa County – Kate Brophy McGee
Mohave County – Sonny Borrelli (Alt. Rich Lettman)
Navajo County – Daryl Seymore (Alt. Jason Whiting)

Pima County – Rex Scott
Pinal County – Stephen Miller (Alt. Rich Vitiello)
Santa Cruz County – Rudy Molera
Yavapai County – Mary Mallory (Alt. Chris Kuknyo)
Yuma County – Lynne Pancrazi (Alt. Jonathan Lines)

Capacity Development & Information Sharing

Speakers

Affiliate Organizations

Appointments & Agency Engagement

PSPRS Board of Trustees & Advisory Committee

DIFI Resiliency & Mitigation Council

AZ Commerce Authority Board

Facilitating County Input on State Broadband Plans

AZ Supreme Court Commission on Technology

Arizona Criminal Justice Commission

CSA President serves on AACo LPC

Sen. Warren Peterson, Senate President

Sen. T.J. Shope, President Pro Tempore

Rep. Leo Biasiucci, Majority Leader

Sen. Mitzi Epstein, Minority Leader

Sen. Hildy Anguis

Rep. Selina Bliss

Sen. David Gowan

Rep. Gail Griffin

Rep. Mae Peshlakai

Jennifer Loreda, Governor's Office

Lourdes Peña, Governor's Office

Thomas Buschatzke, AZ Dept of Water Resources

Joshua Worley, AHCCCS

Thomas Torres, Dept. of Forestry & Fire Management

James Bloom, APS

Bill McClellan, SRP

Maggie Wong, Maricopa Association of Governments

John Bullen, Maricopa Association of Governments

Ben Zhou, ASU

Akheil Singla, ASU

Justin Stritch, ASU

Alison Cook-Davis, Morrison Institute

Kent Volker, Former Pinal County Attorney

Chris Keller, Chief Civil Deputy, Pinal County

Bill Ring, Chief Civil Deputy, Coconino County

Cynthia Maalouf, ACIP

Brett Johnson, Snell & Wilmer

Jay Parke, CPA, Walker & Armstrong

Joseph Kanefield, Snell & Wilmer

County Managers Association

Association of County Engineers

County Planning Directors & Code Enforcement Officials

County Finance Officers Organization

Arizona Association of Counties

County Directors of Environment Health Services Association

Local Health Officers Association

Civil Deputy Attorneys Association



CSA Analytics

*Key Data Points
FY 2025*

7.9 million+ datapoints added to Association's database

Detailed county revenue & expenditure data
Employment data on county workforce

Launched **Interactive County Profiles**

12 surveys conducted

4 research reports published; project managed **2 major research grants**

Maintained **5 monthly dashboards**

Updated data to power **36 interactive pages** of County Encyclopedia

Conducted analysis to support CSA engagement on policy priorities and reactive advocacy

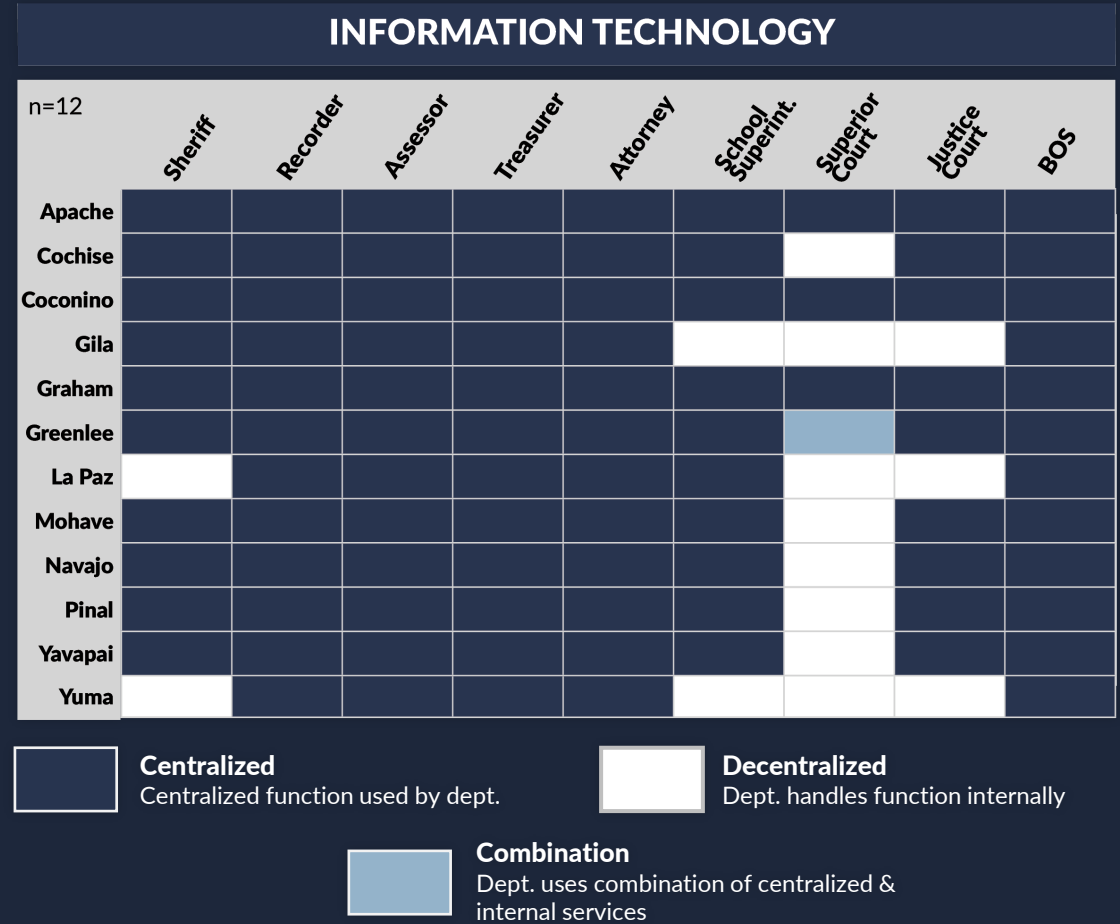


USING DATA & ANALYSIS TO INFORM STATE AND LOCAL LEADERS ABOUT:

How county government works.

Select examples:

- [Central Services Matrix](#)
- [Interactive County Profiles](#)
- [County Government 101](#)
- [Expenditure Limit Resource Guide](#)
- [Levy Limit Resource Guide](#)



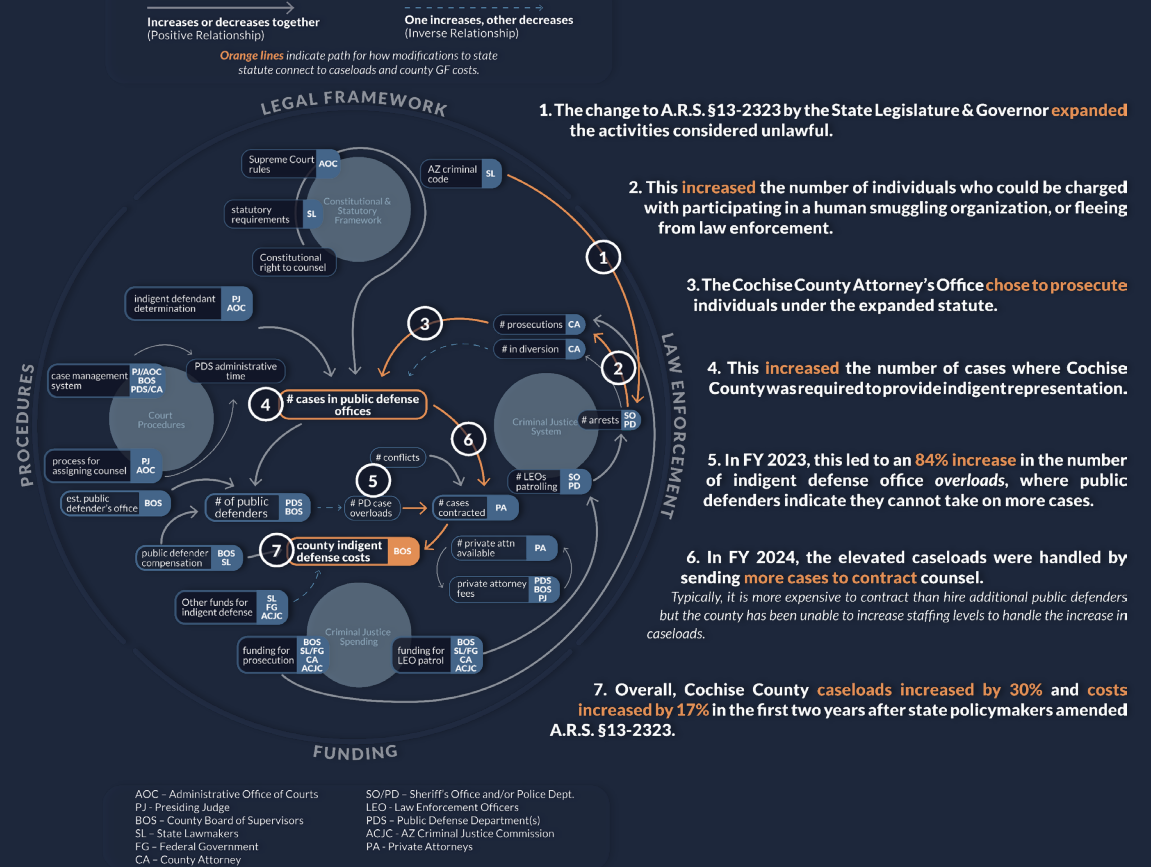


USING DATA & ANALYSIS TO INFORM STATE AND LOCAL LEADERS ABOUT:

The impact of state policies on county operations & finance.

Select examples:

- Indigent defense case study
- Judicial salary mandate overview
- State versus county revenue growth
- Degradation of transportation funding revenues
- County versus state court & criminal justice expenditures





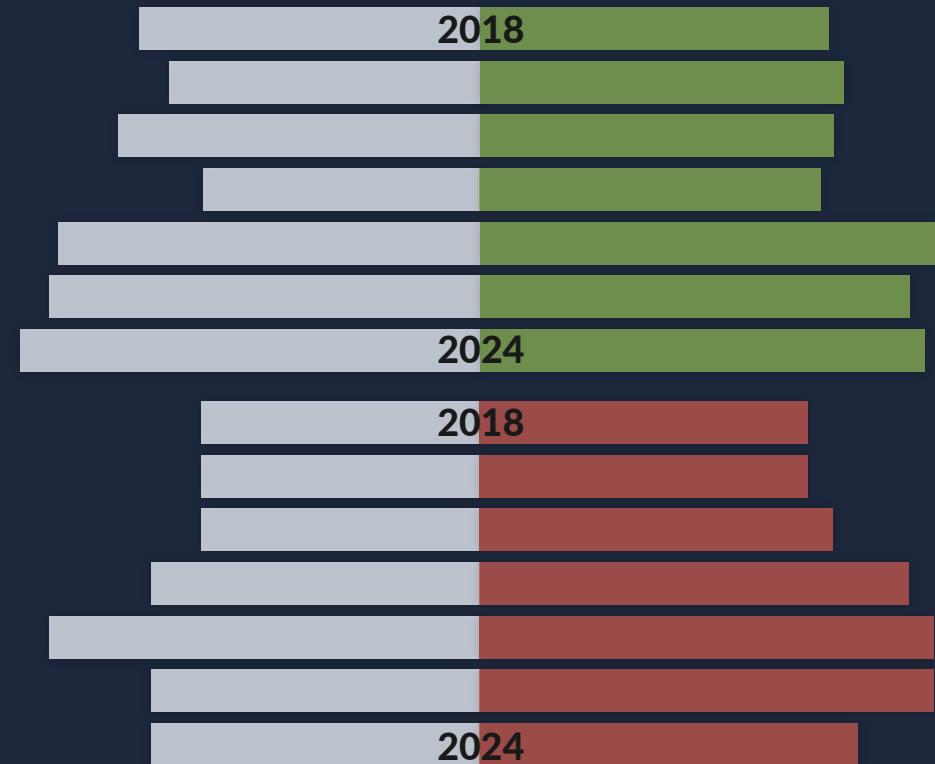
USING DATA & ANALYSIS TO INFORM STATE AND LOCAL LEADERS ABOUT:

What is happening in the public sector workforce.

Select examples:

- Public safety retention & recruitment
Workgroup final report Summer 2025
- Detention workforce retention & recruitment
Final report in Fall 2025
- CSA analysis of public safety workforce, transfers and headcounts

County Law Enforcement
Hires and Terminations vs. Peers
As Share of Workforce ; Total All Counties





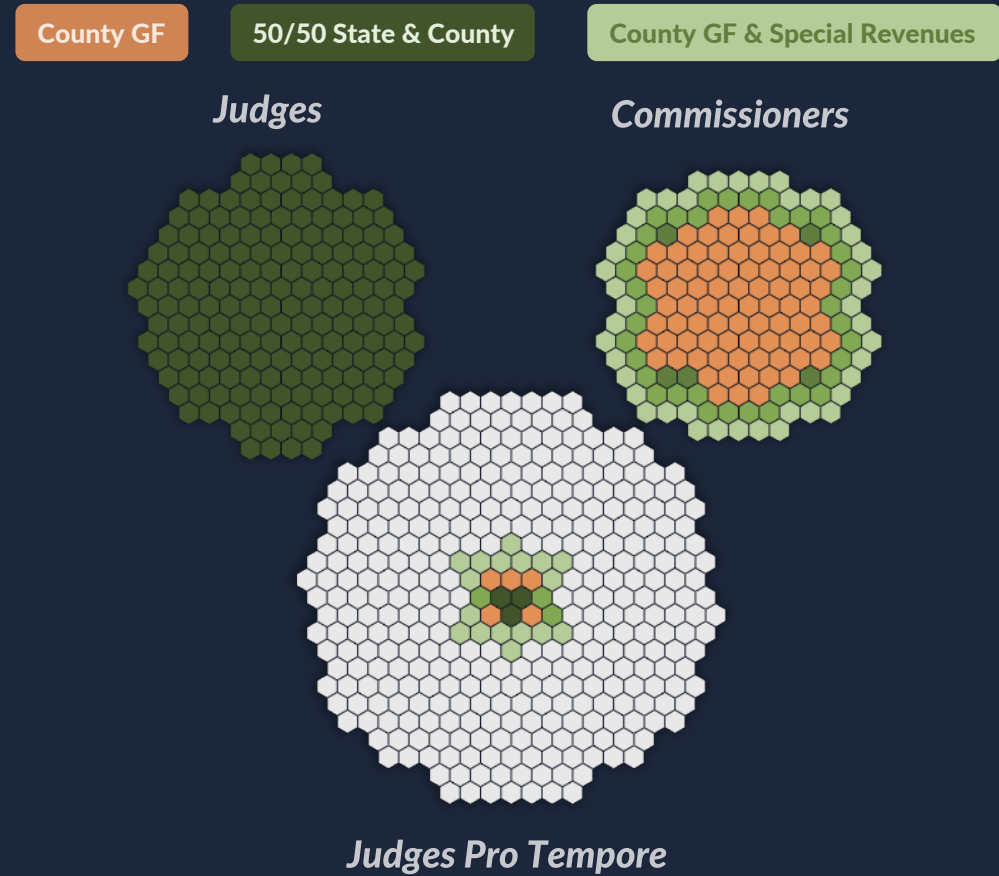
USING DATA & ANALYSIS TO INFORM STATE AND LOCAL LEADERS ABOUT:

How counties manage mandated functions.

Select examples:

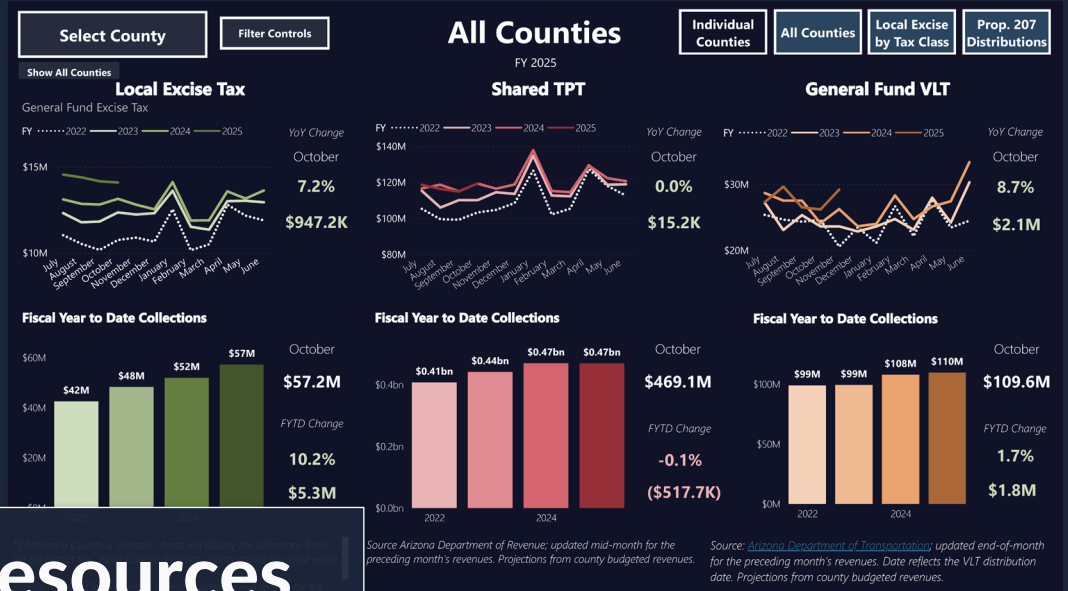
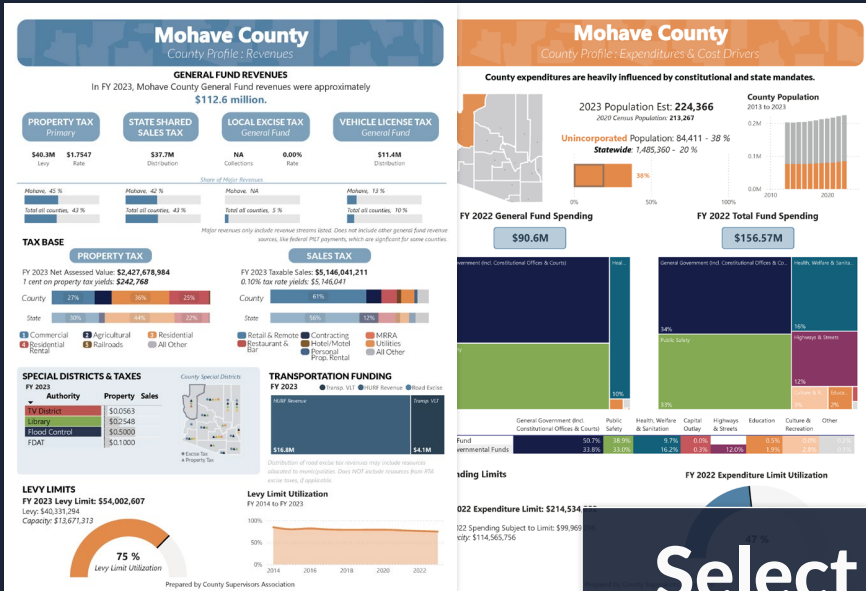
- Superior Court Select Policies & Funding
- Indigent Defense Funding & System Actors
- Procurement Study
Full report in Fall 2025

Superior Court Judicial Officers by Fund Source



Interactive County Profiles

GF & Transportation Revenue Dashboards

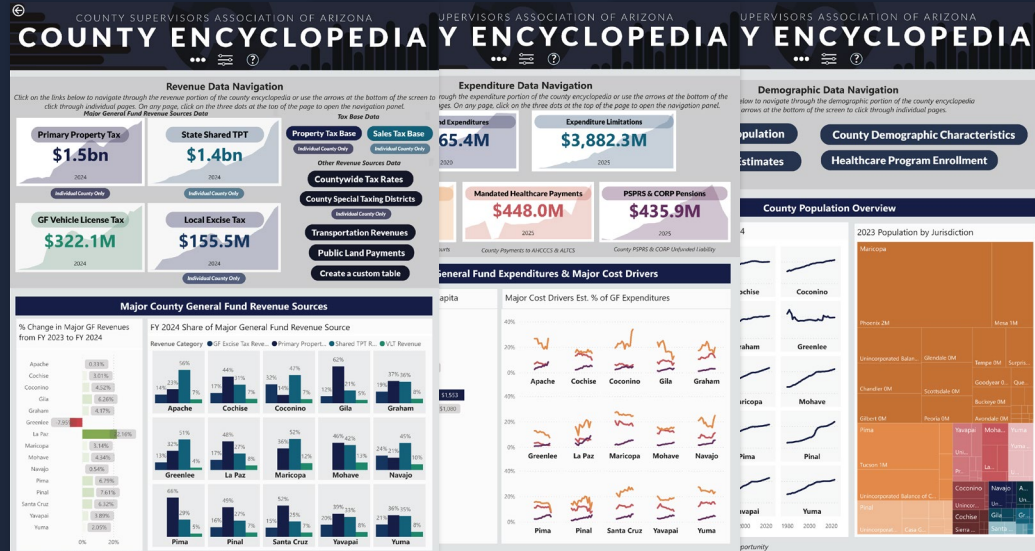


Select CSA Resources

www.countysupervisors.org/data

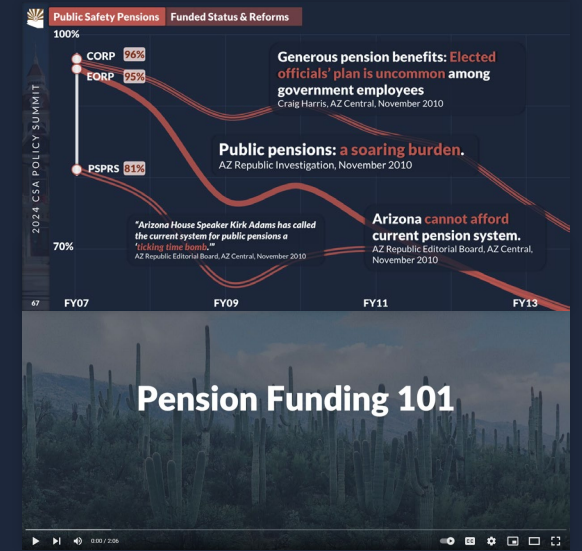
Comprehensive County Encyclopedia

Budget & Cost Driver Resources



County Budget & Audit Guide

County Supervisors Association | Updated for 2024



COUNTY SUPERVISORS ASSOCIATION

Session Summary

Sine Die: **June 27, 2025**

General Effective Date: **September 26, 2025**

90 days after sine die

Session by the Numbers

Days of Session: **166**

Bills

Introduced Bills: **1,724**

Bills Passed: **439**

Bills Signed: **265**

Bills Vetoed: **174**

Memorials and Resolutions

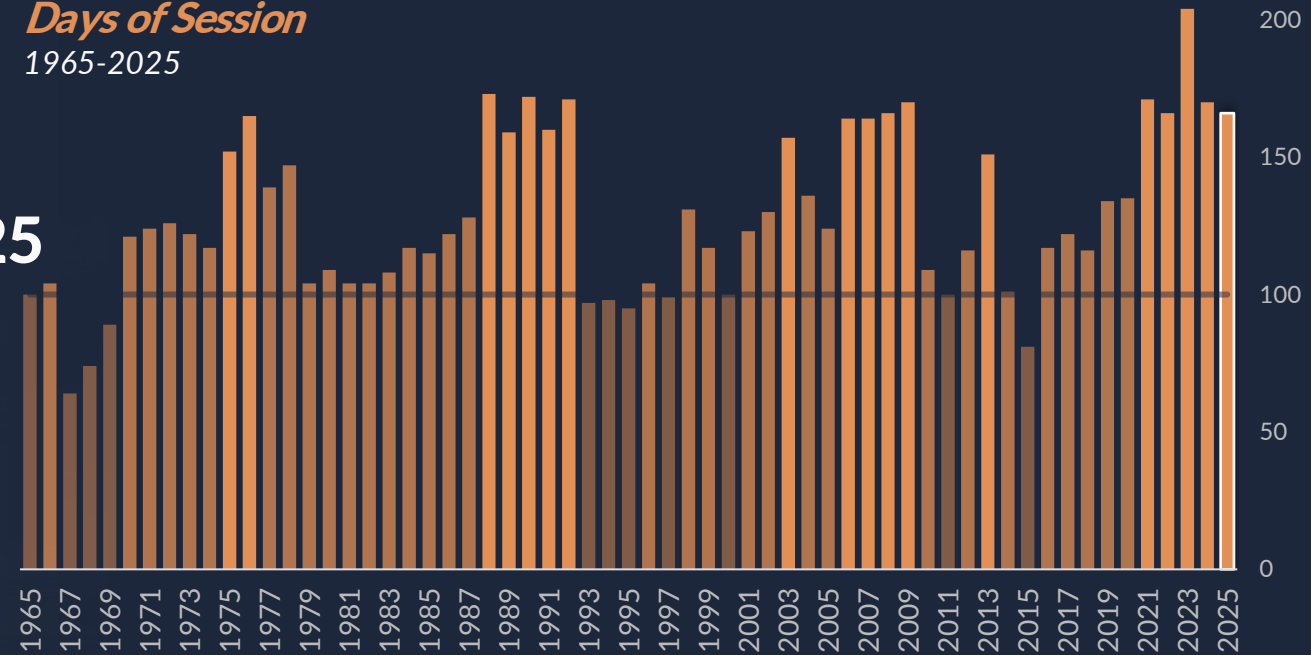
Introduced: **130**

Transmitted: **35**

Referrals: **3**

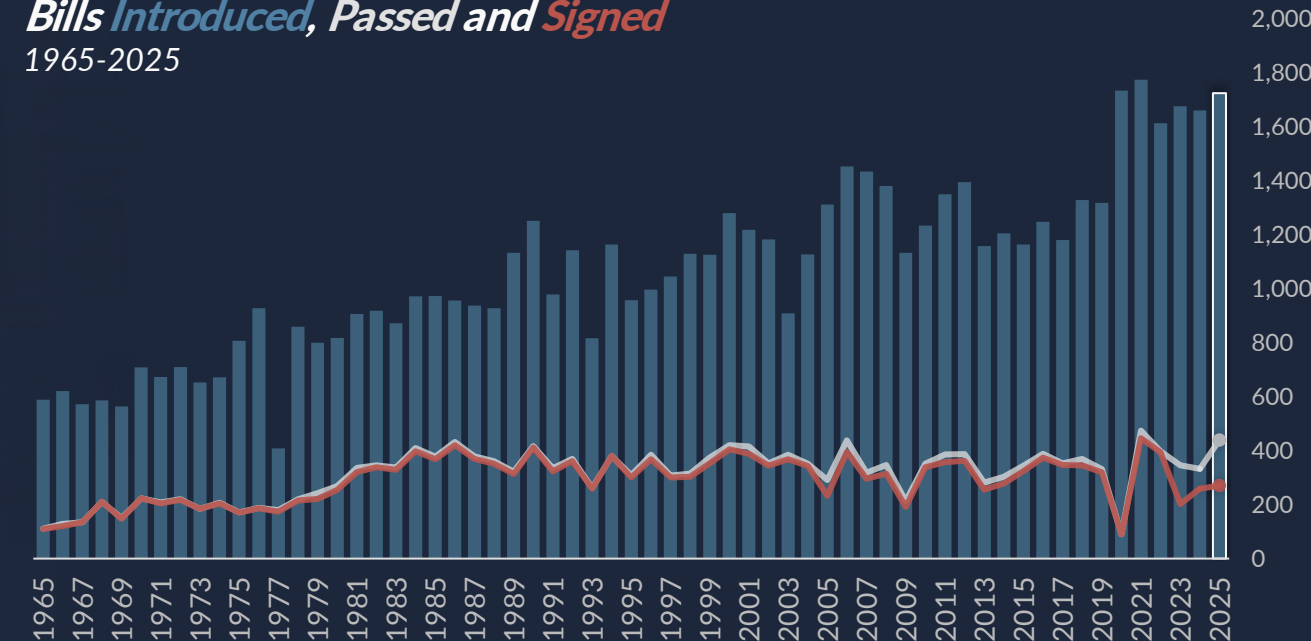
Days of Session

1965-2025



Bills Introduced, Passed and Signed

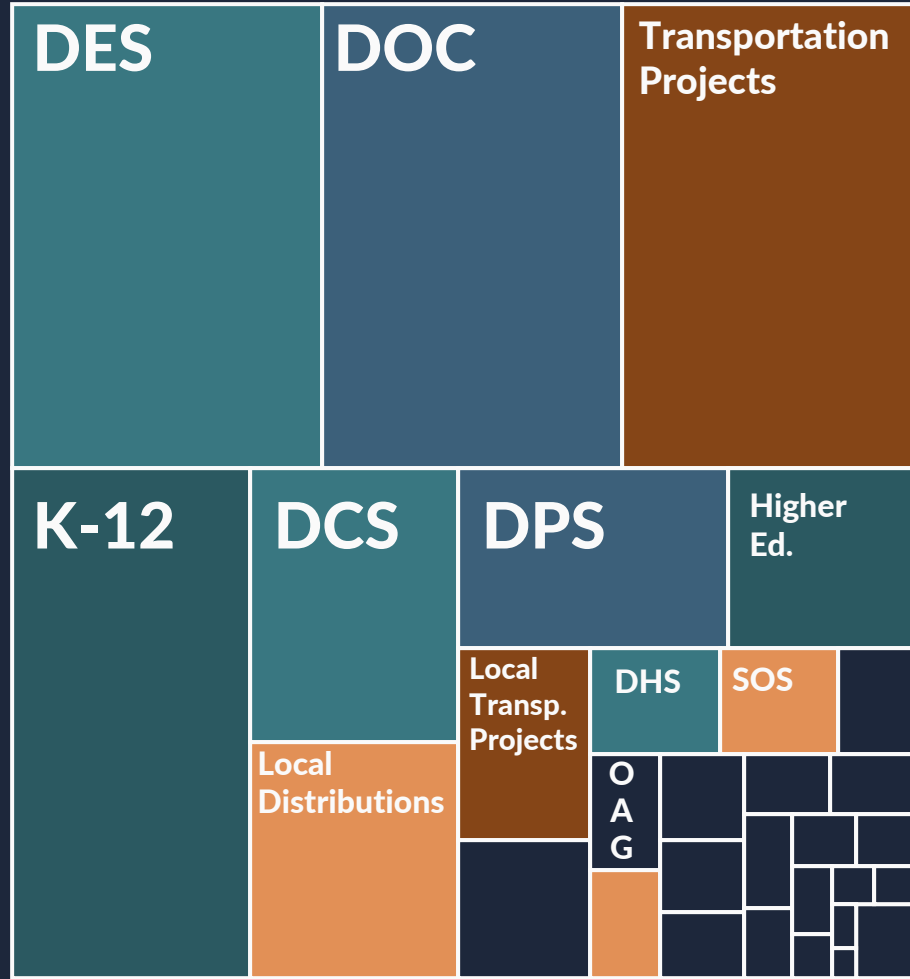
1965-2025





FY 2026 STATE BUDGET

FY 2026 GF expenditures above Baseline, excluding formula adjustments and recurring one-time appropriations.



The \$17.6 Billion spending plan:

- Includes **\$923M in one-time** changes to the JLBC Baseline
- **\$(0.9)M in ongoing** changes to the Baseline

Dollars in millions*	FY2025	FY2026	FY2027	FY2028
Beginning Balance	\$962.8	\$1,092.0	\$207.7	\$52.4
Total Revenues	\$17,337.2	\$17,777.1	\$17,405.1	\$18,051.8
Total Expenditures	\$16,245.2	\$17,569.4	\$17,352.7	\$17,997.0
Ending Balance	\$1,092.0	\$207.7	\$52.4	\$54.8
<i>Ongoing Revenues</i>	\$15,973.1	\$16,591.8	\$17,187.7	\$17,998.8
<i>Ongoing Expenditures</i>	\$15,524.6	\$16,531.7	\$17,070.1	\$17,676.2
<i>Structural Balance</i>	\$448.5	\$60.1	\$117.6	\$322.6



Select Budget Investments

Tax Reductions

Increased Business Personal Property Exemption **\$825,000**
Expanded Disabled Veterans Property Tax Exemption
Income Tax Adoption Subtraction, Wastewater Pipe TPT Exemption **\$140,000**

Public Safety Investments

Corrections Officers – One-time 4% Stipend **\$21.4M**
Law Enforcement 5% Salary Adjustments (DPS Patrol, Dispatch) & DFFM
Firefighters 15% **\$5.0M GF; \$6.7M OF**
DPS Funding for vehicles, recruitment, ACTIC, dispatchers **\$18.9M total**

Capital Projects

\$133.7M in new capital spending including:

- Local Distributions **\$16.9M**
- Transportation Projects **\$90.6M**

Statewide Transportation Innovation Fund **\$1.0M**
Statewide Infrastructure Trust Fund **\$1.0M**
Advanced Air Mobility Fund **\$2.0M**
University SPEED Bonds **\$8.1M** in FY27

Human Services

DES Child Care Assistance Program **\$44.9M**
DES After School & Summer Child Care Grant **\$3.0M**
DES Veteran Homelessness Services **\$2.0M**
DES Coordinated Homelessness Services **\$15.5M**
Housing Trust Fund Prioritization Policy

Workforce & Education

Arizona Promise Scholarships **\$16.3M**
Adult Education Programs **\$7.0M**
Rural School Nuse Access Grants **\$2.5M**

Other

Local Project Distributions **\$32.9M**
Statewide Rural Development Council **\$1.2M**
Traditional Healing Services in AHCCCS & ALTCS **\$100,000**
ASH Operating Shortfall & SVP Funding **\$3.3M**
12 new FTE for Auditor General **\$5.3M**
State Lake Improvement Fund & Heritage Fund Deposits **\$2.5M**



Key County Touchpoints

ADJC Cost shift repealed in FY 2029 - **\$6.7M savings**

Probation funded in FY26, potential shortfall in FY27

- Executive has committed **\$10.1M from ARPA** in FY 26
- Budget maintains current funding level, **does not advance appropriate shortfall funds for FY 27**

Juvenile Dependency Proceedings Fund streamlined

- Continues to appropriate **\$2M** ongoing to the JDPF to provide support to counties
- FY 26 budget adjusts the distribution formula, allocating funds based on each county's share of the most recent year's filings, capped at \$250K per county

State JP salary share fully funded

- Includes **\$310K** supplemental for FY 25 state share of JP salary reimbursements
- Appropriates **\$2.8M** ongoing to fully fund states 40% share

Increased CORP Tier 3 DC employer contribution rate

- **Raises the employer contribution rate from 5% to 5.5%** permanently
- Legislative intent to cover state and local cost, **\$1M ongoing**, starting in FY 27

County ALTCS Contributions

- County contributions to the State's Long Term Care System are **\$409.5M** in FY 2026
- Increase of **\$10M** over FY25, amount is unchanged from the Baseline

Flexibility Language continued

- Continues to allow counties with a population under 250,000 persons to **use up to \$1.25M of any county funds to meet any county fiscal obligation**

County Relevant

Public Safety & Law Enforcement

Local Border Support one-time increase: **\$5M** in FY 26, \$18M total

Counter Terrorism Information Center one-time increase: **\$1.5M** in FY 26, \$3.6M total

Local Law Enforcement Fentanyl Interdiction: **\$3M** from Border Security Fund

Border Drug Interdiction: **\$17.4M**

GIITEM: **\$24.7M**

Major Incident Division: **\$15.5M**

Law Enforcement Boating Safety: **\$2.2M**

Wildfire Investments

Fire Incident Management Grants: **\$2.3M**

Northern Arizona Wildland Fire Training Facility: **\$4M** from WIFA

Wildfire Suppression: **\$30M** Supplemental for FY 25 from WIFA

Wildfire Mitigation: **\$27.1M**

Other Touchpoints

CD7 Special Election Funding: **\$7M** (Cochise, Maricopa, Pima, Pinal, Santa Cruz, Yuma)

Secure Behavioral Health Facilities: **\$5M**

Election Security Grants Funding Extension: **\$5.4M** (Prev. Approp.)

Rural Development Council: **\$1.2M**

Rural Water Studies: **\$1.3M**

ADOR Fee Delayed to FY29: **\$1.2M** in savings in FY 26

Out of County Tuition Assistance: **\$1.1M**

County Attorneys Fund: **\$973.7K**

Indigent Defense Fund: **\$700K**

County Judicial Reimbursements: **\$188K**

Juvenile Dependency Proceedings: **\$2M**

County Participation; Child Support Enforcement: **\$8.54M**

Local Cybersecurity Grants: **\$10M**

EORP Relief: **\$3M** to counties under 300,000

In-Lieu Lottery: **\$7.15M** counties under 900,000

Environmental County Grants: **\$250K**

County Fairs Livestock & Agriculture Promotion: **\$6M**

County Tuberculosis Provider Care: **\$591K**

Vehicle Theft Local Grants: **\$1.4M**



Local Distributions



Apache - \$275K

- \$275,000 County Sheriff for School Safety Interoperability

Cochise

- Cochise County Jail Funding Extension through FY29 - \$20M (*Prev. Approp.*)

Coconino - \$2.05M

- \$47,800 Law Enforcement Management Pilot Program
- \$2M Coordinated Reentry

Gila - \$280K

- \$280,000 County Sheriff for School Safety Interoperability

Graham - \$780K

- \$280,000 County Sheriff for School Safety Interoperability
- \$500,000 Gila Valley Irrigation District

Greenlee - \$170K

- \$170,000 County Sheriff for School Safety Interoperability

Maricopa - \$6.1M

- \$2M Sexual Assault Investigator Training & Attorney Anti-human Trafficking
- \$4.1M County Recorder Operating Expenses

Mohave - \$5.8M

- \$200,000 Superior Court Judge
- \$2M Coordinated Reentry
- \$1M County Sheriff
- \$500,000 Lake Mead South Cove Launch Ramp
- \$500,000 Improvements to Horizon Six Improvement District
- \$100,000 County Sheriff Search and Rescue Training
- \$525,000 County Sheriff for School Safety Interoperability
- \$1M Mountain View Road Improvements

La Paz - \$700K

- \$500,000 County Sheriff
- \$200,000 County Sheriff for School Safety Interoperability

Navajo - \$2.5M

- \$540,000 County Sheriff for School Safety Interoperability
- \$2M Coordinated Reentry

Pima - \$171.8K

- \$171,800 Law Enforcement Management Pilot Program

Pinal - \$3.45M

- \$500,000 Law Enforcement Management Pilot Program
- \$500,000 Pinal County Transportation Plan
- \$400,000 County Sheriff
- \$50,000 Illegal Dumping Signage
- \$2M Coordinated Reentry

Santa Cruz - \$350K

- \$350,000 County Sheriff for School Safety Interoperability

Yavapai - \$7.05M

- \$950,000 County Sheriff
- \$2M Criminal Information Intelligence Center
- \$500,000 Satellite Communications Pilot Program
- \$1M Public Safety Facility
- \$600,000 County Sheriff for School Safety Interoperability
- \$2M Coordinated Reentry

Yuma - \$3.9M

- \$750,000 Yuma County Family Advocacy Center
- \$1M County Recorder
- \$850,000 Excess Waste Tire Cleanup
- \$1.3M Somerton Ave Bridge Replacement



CSA Proactive Advocacy Policy

SB 1035: postconviction relief proceedings; hourly rate
(Kavanagh)

Raises maximum hourly rate for contracted capital post-conviction relief counsel to \$200.

SB 1604: licensed secure health facility; defendants (Angius)

Specifies that patients committed to an SBHRF under Title 36 may not be treated in the same SBHRF as individuals under Title 13.

HB 2145: registered sanitarians; qualifications (Bliss)

Reduces barriers to entry for individuals seeking to become registered Sanitarians.

HB 2104: emissions; voluntary vehicle repair; timeline (Griffin)
(Waste Tire Fee Fund)

Extends the Waste Tire Fee Fund by 3 years.



Local Authorities

Increasing difficulty of meeting costs of state mandates

SCR 1008, SB 1013, HB 2918

Removing local discretion in elections administration

SB 1097, HB 2017, HCR 2002

Salaries & Pensions

Increasing pension benefits without sufficient consideration of costs, goals, and outcomes

SB 1148, SB 1365, SB 1712

Setting local salaries in state statute without consideration of local conditions

SB 1273

ROW Officers

Conditionally expands where Constables can serve process

SB 1231

Reforms implementing training and oversight for County Treasurers

HB 2368, HB 2369, HB 2433

General Government

Greatly expanding county legal liability via vague prohibitions and definitions

SB 1036, HB 2416

Splitting counties, affecting state-shared revenues

SB 1100, SB 1101

Permitted limited harassment of elected officials and employees

HB 2043

Subjecting local settlements to delayed state oversight

HB 2222

Meetings & Records

Mandates length and location of call to the public

SB 1243

As drafted, mandated length and location of call to the public, records shot-clocks, and more

SB 2927

Planning & Zoning

Preemptions of local planning and zoning for: **single- and multifamily developments on religious institution property** *HB 2191*

wind farms *HB 2223*

residential solar *HB 2301*

small modular nuclear reactors *HB 2774*

accessory dwelling units *HB 2928*

Finance

Makes county liable for actions of independent entities

SB 1145

Retires fleet vehicles using arbitrary standards

SB 1288

Would assess some agricultural real property as personal property

SB 1407

Eliminated business personal property tax

HB 2389

Creates new structure for stadium funding

HB 2704

Redirected TPT for residential development

HB 2926

Enacted Bills; County Impacts

Elections

SB 1040: recall elections; procedures; timeline (*Kavanagh*)

SB 1153: write-in candidates; nomination paper filing (*Gowan*)

HB 2129: inactive voters; hand counts; alternates (*Bliss*)

HB 2376: county candidates; clean elections pamphlet (*Carter, P.*)

Open Meetings & Public Records

SB 1372: public records; notification; commercial purpose (*Mesnard*)

HB 2231: advisory committee; subcommittee; exception (*Hendrix*)

Taxation

SB 1144: jail facilities excise tax; extension (*Payne*)

SB 1749: 2025-2026; taxation; omnibus (*Kavanagh*) [**Exemption Increase; BPP**]

HB 2704: tax; distribution; county stadium district (*Weninger*)

Other Items

SB 1661: broadband service district authority; formation (*Dunn*)

Public Safety Employment

SB 1287: PSPRS; part-time employment (*Gowan*)

SB 1739: 2025-2026; criminal justice (*Kavanagh*) [**CORP Employer Contribution Rate Increase**]

HB 2689: cancer insurance; retirees; public safety (*Hendrix*)

Planning & Zoning

SB 1182: municipalities; counties; construction hours (*Ortiz*)

SB 1218: townsites; trustees; board of supervisors (*Angius*)

SB 1286: counties; board; administrative review; approval (*Gowan*)

SB 1308: sober living homes (*Carroll*)

HB 2928: accessory dwelling units; requirements (*Carbone*)

Courts & Criminal Justice

SB 1035: postconviction relief proceedings; hourly rate (*Kavanagh*)

SB 1604: licensed secure health facility; defendants (*Angius*)

SB 1739: 2025-2026; criminal justice (*Kavanagh*) [**Child/Family Representation**]

HB 2742: court-ordered evaluations (*Lopez*)

Environmental Health/ Animal Control

SB 1033: animal seizure; bond amount (*Kavanagh*)

SB 1241: animal bites; owner contact information (*Kavanagh*)

HB 2104: emissions; voluntary vehicle repair; timeline (*Griffin*) [**Waste Tire Fund**]

HB 2145: registered sanitarians; qualifications (*Bliss*)

HB 2127: hazardous substance release; notice; liability (*Bliss*) & **HB 2128:**

environmental remediation; liability; release (*Bliss*)

HB 2272: municipal separate storm system (*Griffin*)

Water

SB 1611: groundwater savings credit; ADWR (*Shope*)

HB 2727: county water authority; Harquahala INA (*Biasiucci*)

Row Officers

SB 1161: sheriffs; constables; service; mileage; fees (*Gowan*)

SB 1231: training; newly elected constables (*Payne*)

HB 2368: auditor general; records; financial institutions (*Gress*) & **HB 2369:** auditor general; county treasurer; review (*Gress*)





County-Relevant Agency Reauthorizations

*Arizona
Department of
Housing*

+ 2 years

SB 1743

New reporting &
performance measurement
requirements.
Drug policy requirement.
HTF prioritization.

*Arizona
Criminal Justice
Commission*

+ 4 years

HB 2313

Sunset review by AG.
Member attendance
requirements.
Change to membership.
No data collection.

*Department of
Insurance &
Financial
Institutions*

+ 8 years

HB 2313

*Governor's
Regulatory
Review Council*

+ 4 years

HB 2313

Constitutional review by
staff attorneys.
Legislative leaders looped
in on documents.
Membership change.
Testimony procedure.

*Property Tax
Oversight
Committee*

+ 8 years

HB 2313



Ballot Referrals

**all measures subject to voter approval in the 2026 election.*

HCR 2055

drug cartels; terrorist organizations
(Montenegro)

Declares drug cartels are terrorist organizations and directs the Arizona Department of Homeland Security to address the threat with all powers in its authority.

- The proposition specifies that the classification of a drug cartel as a terrorist organization **does not support an individual's asylum claim.**
- **Defines drug cartel** as ongoing informal or formal groups where either the group or individuals in the group engage in **(a)** "human smuggling", **(b)** "drug trafficking for profit", or **(c)** any act of terrorism as defined by statute.
- **Defines threat** as anything that could violate or cause harm to individual rights, public safety, health, or general welfare of the people.

SCR 1004

prohibit tax; monitoring; vehicle mileage
(Hoffman)

Prohibits the state, and any political subdivisions, from:

- Imposing any tax or fee on a person based on the vehicle miles traveled (VMT) by the person.
- Enacting any rule or law to monitor or limit the VMT traveled by a person (unless the rule requires voluntary consent).

CITY ONLY

HCR 2021

food; municipal tax; exemption
(Biasiucci)

Limits the taxation of "food intended for home consumption" by cities, towns, and other taxing jurisdictions by:

- **Capping** cities with a food sales tax under 2% at a maximum of 2% and requiring voter approval for subsequent increases.
- **Capping** cities with a food sales tax above 2% at their current rate.
- Prohibits a city's establishment or increase of a food sales tax during the 24 months before June 30, 2027.



Thank you for your engagement!

Promoting good government at the State Legislature.

68 processed via LPC

17 supported

21 favorably amended

33 defeated

54 pre-session meetings

78 session meetings

45 individual legislators

15 legislative staff meetings

39 staff testimonies given



CSA End of Session Reports

**2025 Legislative
Summary**

**FY 2026 State
Budget: County
Touchpoints**

**County Finance
Officers Guide
2025**

**FY 2026
County Revenue
& Expenditure
Report**

Upcoming Events

Policy Development

2025 Legislative Proposals

- Due August 4, 2025
- Proposals submitted on-time will be considered by the full Board of Directors at the CSA Summit.

Scheduled Meetings

Managers Meetings

August 8 & September 12

CSA Board Meeting

September 18

2025 CSA Policy Summit

Hosted by Yuma County, October 28-30

