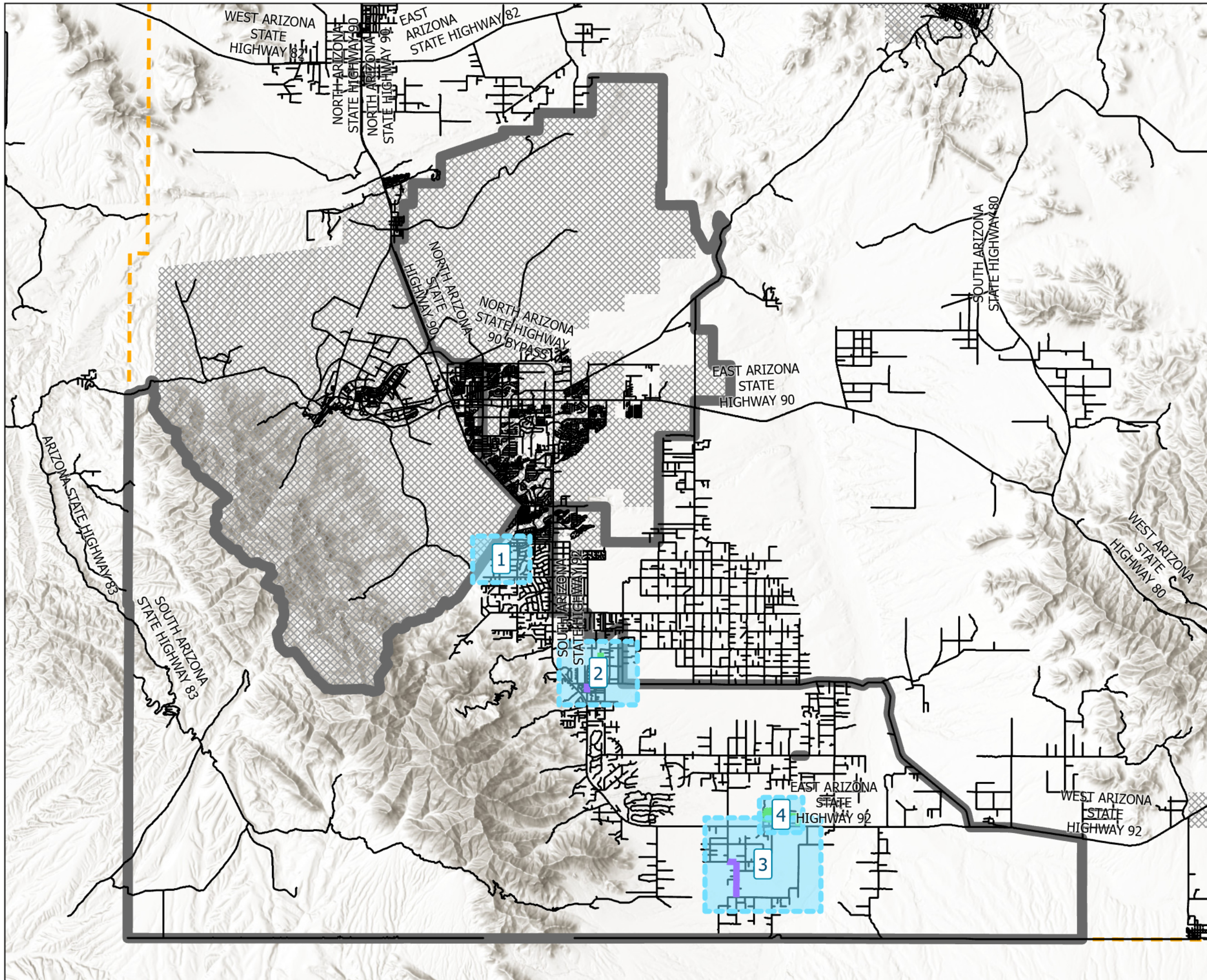


Road Review

BOS District 1 Overview



-  Detail Map
-  Maintained Road To Pave
-  Road To Add To Maintenance
-  Road To Drop
-  Road
-  BOS District 1
-  Cochise County
-  Incorporated City



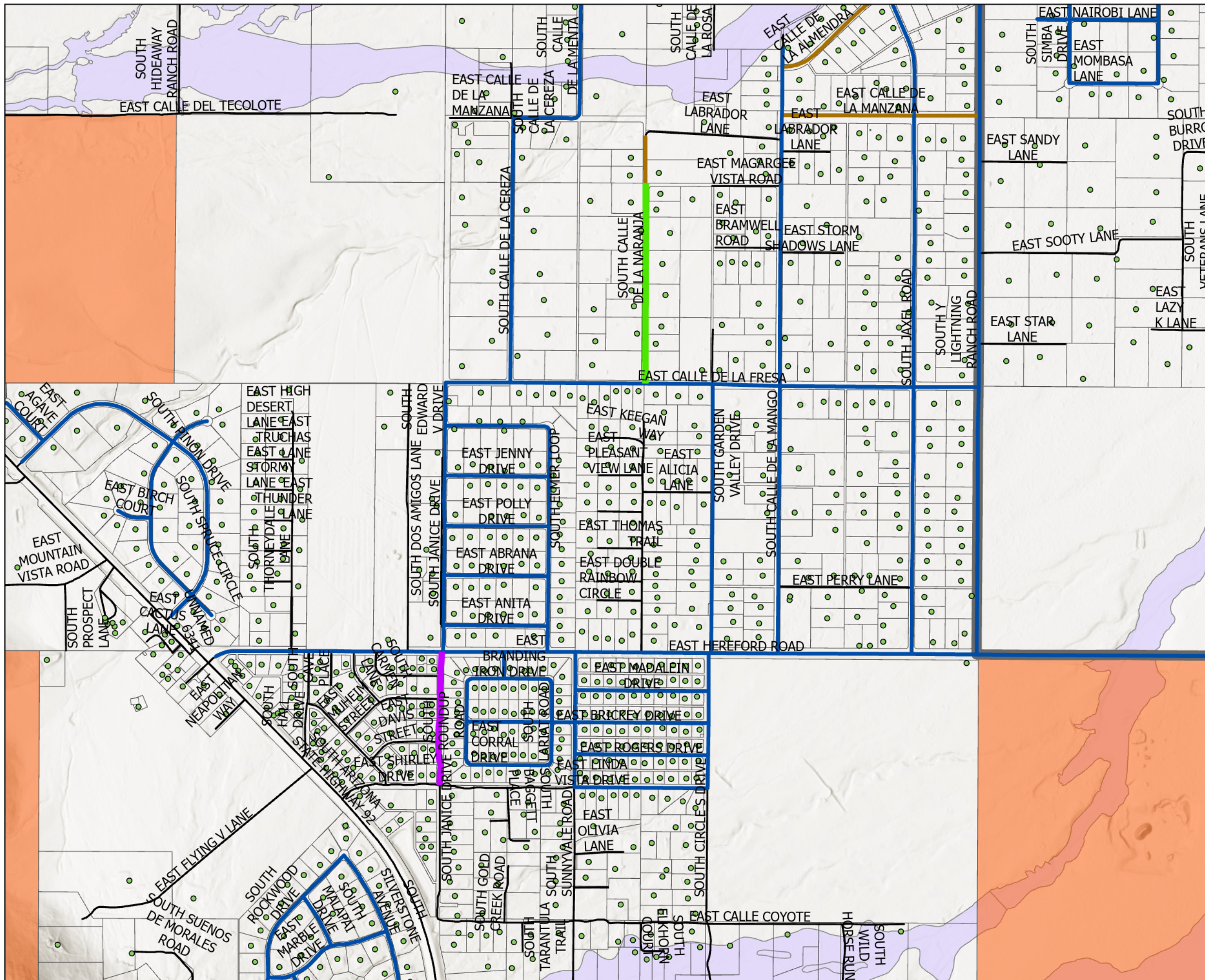
0 1.25 2.5 5 Miles

Map prepared 7/31/2025

File: ...Engineering\GisData\Inquires\2025\ListOfRoadsTo Pave_JackieWatkins\TempArcProProjectForBosMaps

Road Review

BOS District 1 Map 2 Nicksville Area



- Address
- Maintained Road To Pave
- Road To Add To Maintenance
- Paved County Maintained Road
- Not Paved County Maintained Road
- Road
- ▬ BOS District 1
- Parcel (State, BLM, etc)
- Parcel (Taxable)
- FEMA Flood Hazard



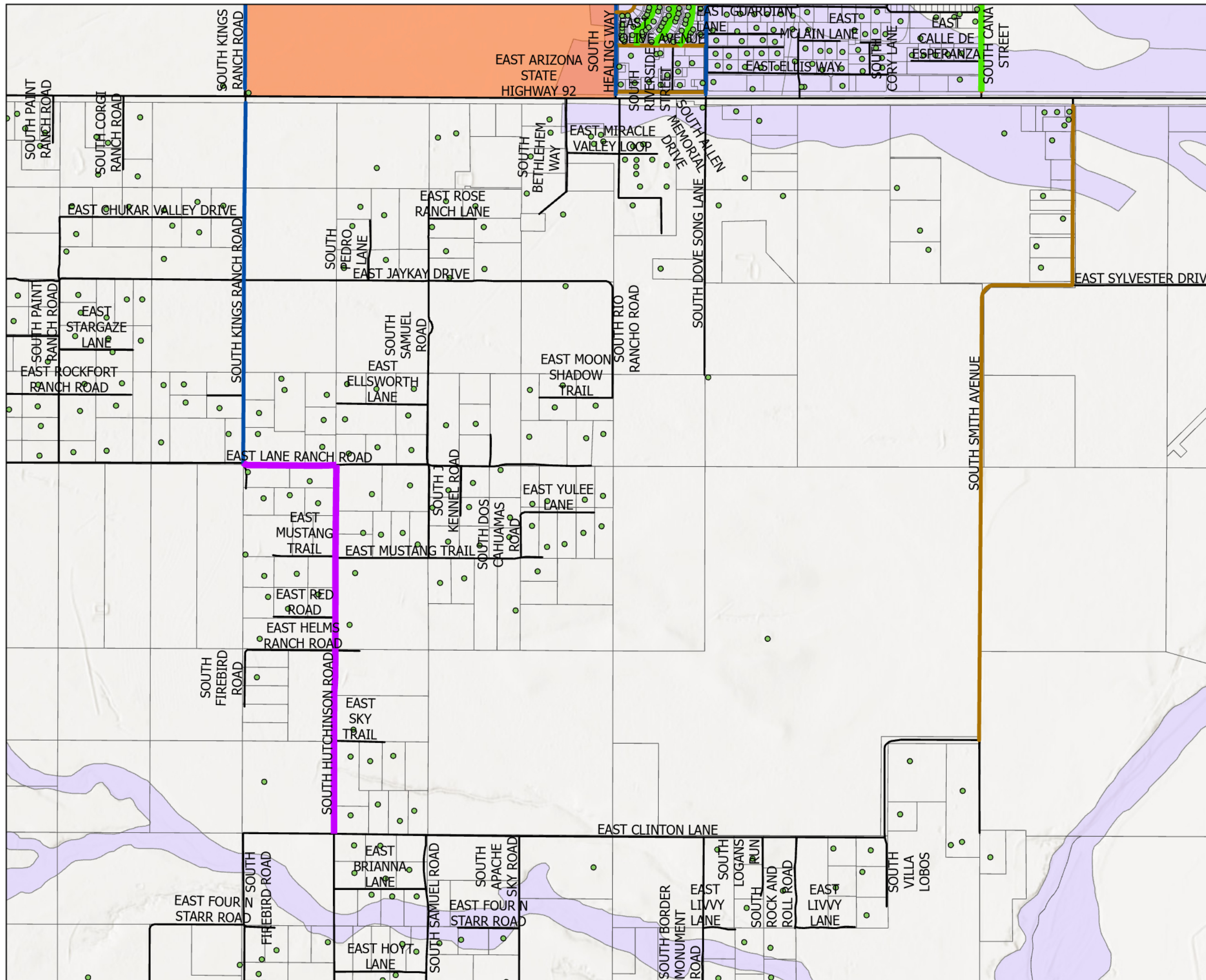
0 0.07 0.15 0.3
Miles

Map prepared 7/31/2025

File: ...Engineering\GisData\Inquires\2025>ListOfRoadsTo Pave_JackieWatkins\TempArcProProjectForBosMaps

Road Review

BOS District 1 Map 3 Palominas Ranches Area



- Address
- Maintained Road To Pave
- Road To Add To Maintenance
- Paved County Maintained Road
- Not Paved County Maintained Road
- Road
- ▬ BOS District 1
- Parcel (State, BLM, etc)
- Parcel (Taxable)
- FEMA Flood Hazard



0 0.13 0.25 0.5 Miles

Map prepared 7/31/2025

File: ...Engineering\GisData\Inquires\2025>ListOfRoadsTo Pave_JackieWatkins\TempArcProProjectForBosMaps

