

A desert landscape at sunset. The sky is filled with dramatic, dark clouds illuminated from below by the setting sun, creating a mix of deep blues, oranges, and yellows. In the foreground, a dirt path winds through a desert scrubland with various cacti, including saguaros and cholla. The overall mood is serene and natural.

Public Works Work Session

Director Jason Faccio

Fleet Update

- 17 Replacement Light Fleet Vehicles ordered
 - 12 received
- Heavy Fleet
 - Chip Box received
 - Motor Grader received
 - High Side Scrapper Trailer received
 - Second High Side Trailer (possible Grant)
 - Aljon (Solid Waste Compactor) engine rebuild completed
 - Cardboard Baler – grant approval process
- Ordering in Progress
 - Willcox Airport 6ft brush hog (mowing attachment for current tractor)



ANY
QUESTIONS?



Highways Update

Highway Division Work Plan 2nd/3rd Quarter FY 2025/2026

| ID | Task Name | Duration | Start | Finish | Timeline | | | | | | | | | | | | | | | | | | | | | | | | | | | | | | | | | | | | | |
|----|--|--------------|--------------|--------------|----------------|----------|----------|---------|----------|-------|-----|---|---|----|----|----|----|---|---|----|----|----|----|----|---|----|----|----|----|----|---|---|----|----|----|---|---|----|----|----|----|----|
| | | | | | October | November | December | January | February | March | Apr | | | | | | | | | | | | | | | | | | | | | | | | | | | | | | | |
| | | | | | 27 | 2 | 7 | 12 | 17 | 22 | 27 | 1 | 6 | 11 | 16 | 21 | 26 | 1 | 6 | 11 | 16 | 21 | 26 | 31 | 5 | 10 | 15 | 20 | 25 | 30 | 4 | 9 | 14 | 19 | 24 | 1 | 6 | 11 | 16 | 21 | 26 | 31 |
| 1 | Bisbee, Sierra Vista | 195.88 days? | Wed 10/1/25 | Tue 6/30/26 | [Timeline bar] | | | | | | | | | | | | | | | | | | | | | | | | | | | | | | | | | | | | | |
| 2 | Maintenance Grading | 197 days | Tue 7/1/25 | Tue 3/31/26 | [Timeline bar] | | | | | | | | | | | | | | | | | | | | | | | | | | | | | | | | | | | | | |
| 3 | ROW Mowing | 197 days | Tue 7/1/25 | Tue 3/31/26 | [Timeline bar] | | | | | | | | | | | | | | | | | | | | | | | | | | | | | | | | | | | | | |
| 4 | Striping | 114.5 days? | Tue 7/1/25 | Thu 12/4/25 | [Timeline bar] | | | | | | | | | | | | | | | | | | | | | | | | | | | | | | | | | | | | | |
| 5 | Hot Mix Richards | 2.25 days? | Fri 10/31/25 | Mon 11/3/25 | [Timeline bar] | | | | | | | | | | | | | | | | | | | | | | | | | | | | | | | | | | | | | |
| 6 | Chip Seal Richards, Apache Pointe | 3.5 days? | Tue 11/4/25 | Thu 11/6/25 | [Timeline bar] | | | | | | | | | | | | | | | | | | | | | | | | | | | | | | | | | | | | | |
| 7 | Wash repair Gleason | 4.75 days? | Mon 12/1/25 | Thu 12/4/25 | [Timeline bar] | | | | | | | | | | | | | | | | | | | | | | | | | | | | | | | | | | | | | |
| 8 | Concrete wash Repair Madera | 4.75 days? | Mon 12/8/25 | Thu 12/11/25 | [Timeline bar] | | | | | | | | | | | | | | | | | | | | | | | | | | | | | | | | | | | | | |
| 9 | Guard rail replacement Hereford Rd Bridge | 4.75 days? | Mon 1/5/26 | Fri 1/9/26 | [Timeline bar] | | | | | | | | | | | | | | | | | | | | | | | | | | | | | | | | | | | | | |
| 10 | Guard rail replacement Purdy Lane 4 sections | 14.75 days? | Mon 2/2/26 | Fri 2/20/26 | [Timeline bar] | | | | | | | | | | | | | | | | | | | | | | | | | | | | | | | | | | | | | |
| 11 | Hauling and staging chip | 62.25 days? | Mon 1/5/26 | Tue 3/31/26 | [Timeline bar] | | | | | | | | | | | | | | | | | | | | | | | | | | | | | | | | | | | | | |
| 12 | Douglas / Elfrida | 195.88 days? | Wed 10/1/25 | Tue 6/30/26 | [Timeline bar] | | | | | | | | | | | | | | | | | | | | | | | | | | | | | | | | | | | | | |
| 13 | Maintenance Grading | 197 days | Tue 7/1/25 | Tue 3/31/26 | [Timeline bar] | | | | | | | | | | | | | | | | | | | | | | | | | | | | | | | | | | | | | |
| 14 | ROW Mowing | 197 days? | Tue 7/1/25 | Tue 3/31/26 | [Timeline bar] | | | | | | | | | | | | | | | | | | | | | | | | | | | | | | | | | | | | | |
| 15 | Hot Mix Frontier, Washington | 4.75 days? | Mon 11/3/25 | Thu 11/6/25 | [Timeline bar] | | | | | | | | | | | | | | | | | | | | | | | | | | | | | | | | | | | | | |
| 16 | Hauling material Turkey Creek | 9.75 days? | Mon 1/5/26 | Thu 1/15/26 | [Timeline bar] | | | | | | | | | | | | | | | | | | | | | | | | | | | | | | | | | | | | | |
| 17 | Hauling material Rucker | 9.75 days? | Mon 1/19/26 | Thu 1/29/26 | [Timeline bar] | | | | | | | | | | | | | | | | | | | | | | | | | | | | | | | | | | | | | |
| 18 | Hauling and staging chip | 62.25 days? | Mon 1/5/26 | Tue 3/31/26 | [Timeline bar] | | | | | | | | | | | | | | | | | | | | | | | | | | | | | | | | | | | | | |
| 19 | Hot Mix Gleason | 4.75 days? | Mon 2/9/26 | Thu 2/12/26 | [Timeline bar] | | | | | | | | | | | | | | | | | | | | | | | | | | | | | | | | | | | | | |
| 20 | Hot Mix Davis Rd | 4.75 days? | Mon 2/16/26 | Thu 2/19/26 | [Timeline bar] | | | | | | | | | | | | | | | | | | | | | | | | | | | | | | | | | | | | | |
| 21 | Benson | 195.88 days? | Wed 10/1/25 | Tue 6/30/26 | [Timeline bar] | | | | | | | | | | | | | | | | | | | | | | | | | | | | | | | | | | | | | |
| 22 | Maintenance Grading | 197 days | Tue 7/1/25 | Tue 3/31/26 | [Timeline bar] | | | | | | | | | | | | | | | | | | | | | | | | | | | | | | | | | | | | | |
| 23 | ROW Mowing | 197 days | Tue 7/1/25 | Tue 3/31/26 | [Timeline bar] | | | | | | | | | | | | | | | | | | | | | | | | | | | | | | | | | | | | | |
| 24 | Ocotillo Rd, Flower Rd, Benson Airport Rd. Wash sand removal | 19.75 days? | Mon 11/24/25 | Thu 12/18/25 | [Timeline bar] | | | | | | | | | | | | | | | | | | | | | | | | | | | | | | | | | | | | | |
| 25 | Hauling and staging chip | 62.25 days? | Mon 1/5/26 | Tue 3/31/26 | [Timeline bar] | | | | | | | | | | | | | | | | | | | | | | | | | | | | | | | | | | | | | |
| 26 | Sybil Rd Concrete wash rip rap and slurry | 9.75 days? | Mon 3/2/26 | Thu 3/12/26 | [Timeline bar] | | | | | | | | | | | | | | | | | | | | | | | | | | | | | | | | | | | | | |
| 27 | Willcox | 195.88 days? | Wed 10/1/25 | Tue 6/30/26 | [Timeline bar] | | | | | | | | | | | | | | | | | | | | | | | | | | | | | | | | | | | | | |
| 28 | Maintenance Grading | 197 days | Tue 7/1/25 | Tue 3/31/26 | [Timeline bar] | | | | | | | | | | | | | | | | | | | | | | | | | | | | | | | | | | | | | |
| 29 | ROW Mowing | 197 days | Tue 7/1/25 | Tue 3/31/26 | [Timeline bar] | | | | | | | | | | | | | | | | | | | | | | | | | | | | | | | | | | | | | |
| 30 | Chip Seal Kansas Settlement | 34.75 days? | Mon 9/15/25 | Thu 10/30/25 | [Timeline bar] | | | | | | | | | | | | | | | | | | | | | | | | | | | | | | | | | | | | | |
| 31 | Striping Kansas Settlement | 8.5 days? | Mon 11/10/25 | Wed 11/19/25 | [Timeline bar] | | | | | | | | | | | | | | | | | | | | | | | | | | | | | | | | | | | | | |
| 32 | South Belle Ranch Hot Mix prep/shoulder repair | 14.75 days? | Mon 12/1/25 | Thu 12/18/25 | [Timeline bar] | | | | | | | | | | | | | | | | | | | | | | | | | | | | | | | | | | | | | |
| 33 | Hauling and staging chip | 62.25 days? | Mon 1/5/26 | Tue 3/31/26 | [Timeline bar] | | | | | | | | | | | | | | | | | | | | | | | | | | | | | | | | | | | | | |
| 34 | Hot Mix South Belle Ranch | 4.75 days? | Mon 2/2/26 | Thu 2/5/26 | [Timeline bar] | | | | | | | | | | | | | | | | | | | | | | | | | | | | | | | | | | | | | |



Solid Waste





Public Works

| | As of September 2024 | As of September 2025 |
|---|----------------------|----------------------|
| Total Revenue Per Ton | \$75.35 | \$74.09 |
| Expenses | | |
| Payroll | \$26.27 | \$26.46 |
| Operations & Maintenance | \$10.87 | \$12.55 |
| Heavy Fleet Equipment Operations & Maintenance | \$12.14 | \$13.31 |
| Heavy Fleet Equipment Replacement | \$4.05 | \$3.90 |
| Transfer Out to Landfill Closure Fund | \$2.58 | \$2.48 |
| Transfer Out to Capital /Future Cell Development | \$11.21 | \$8.41 |
| Transfer Out to Capital /Transfer Station Improvement | \$2.49 | \$2.40 |
| Total Expenses Per Ton | \$69.61 | \$69.52 |
| Profit/Loss Per Ton | \$5.74 | \$4.57 |



Public Works

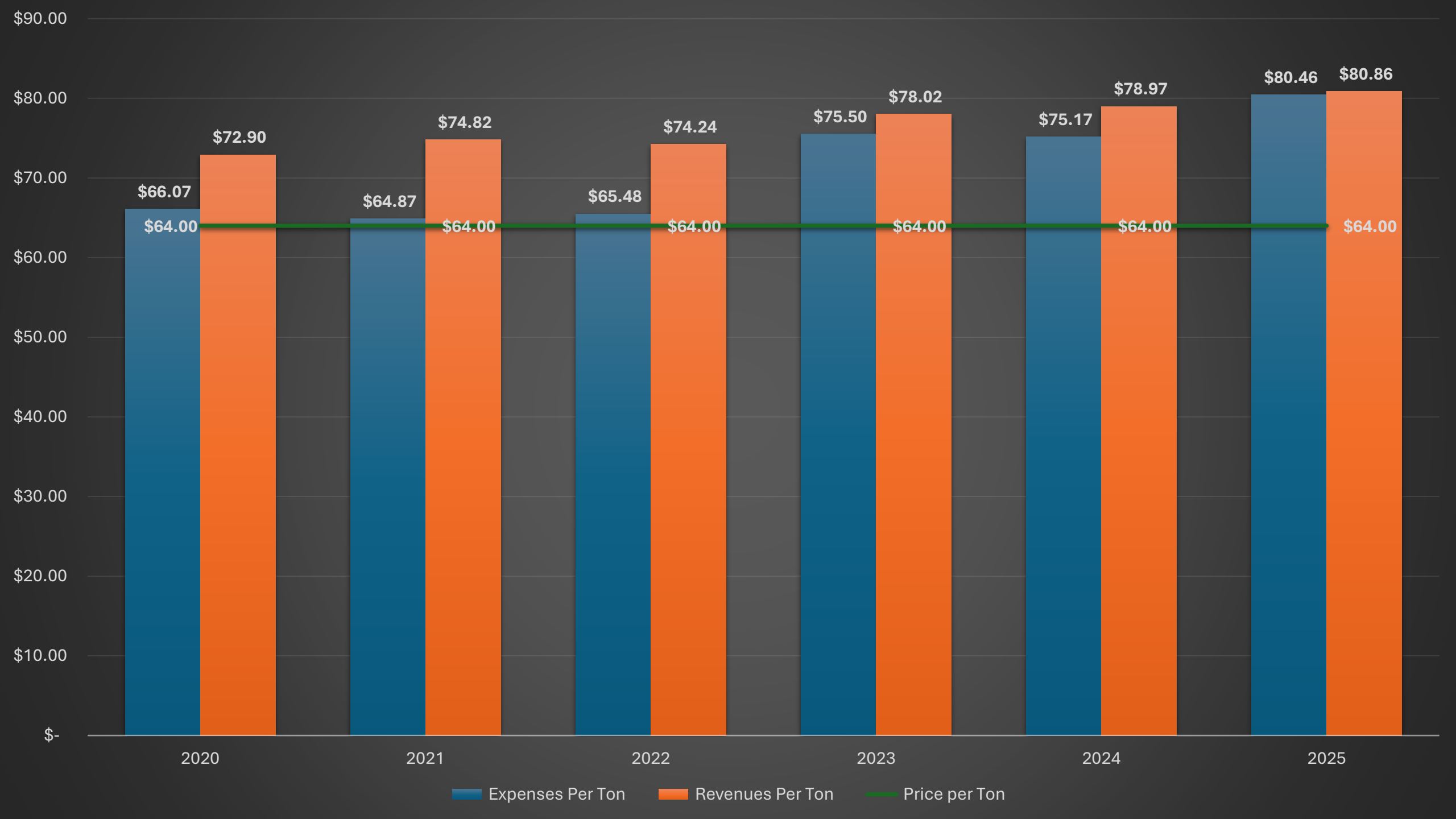
| | As of September 2024 | As of September 2025 |
|---|----------------------|----------------------|
| Tons Weighed and Charged | 20,075 | 20,819 |
| Current Tipping Fee is \$64.00 Per Ton | | |
| Total Revenue | \$1,512,552 | \$1,542,436 |
| Expenses | | |
| Payroll | \$527,452 | \$550,921 |
| Operations & Maintenance | \$218,202 | \$261,301 |
| Heavy Fleet Equipment Operations & Maintenance | \$243,800 | \$277,125 |
| Heavy Fleet Equipment Replacement | \$81,252 | \$81,252 |
| Transfer Out to Landfill Closure Fund | \$51,711 | \$51,711 |
| Transfer Out to Capital /Future Cell Development | \$225,000 | \$175,000 |
| Transfer Out to Capital /Transfer Station Improvement | \$50,000 | \$50,000 |
| Total Expenses | \$1,397,417 | \$1,447,311 |
| | \$115,135 | \$95,126 |

Solid Waste Budget Including Recycling Existing Tipping Fee

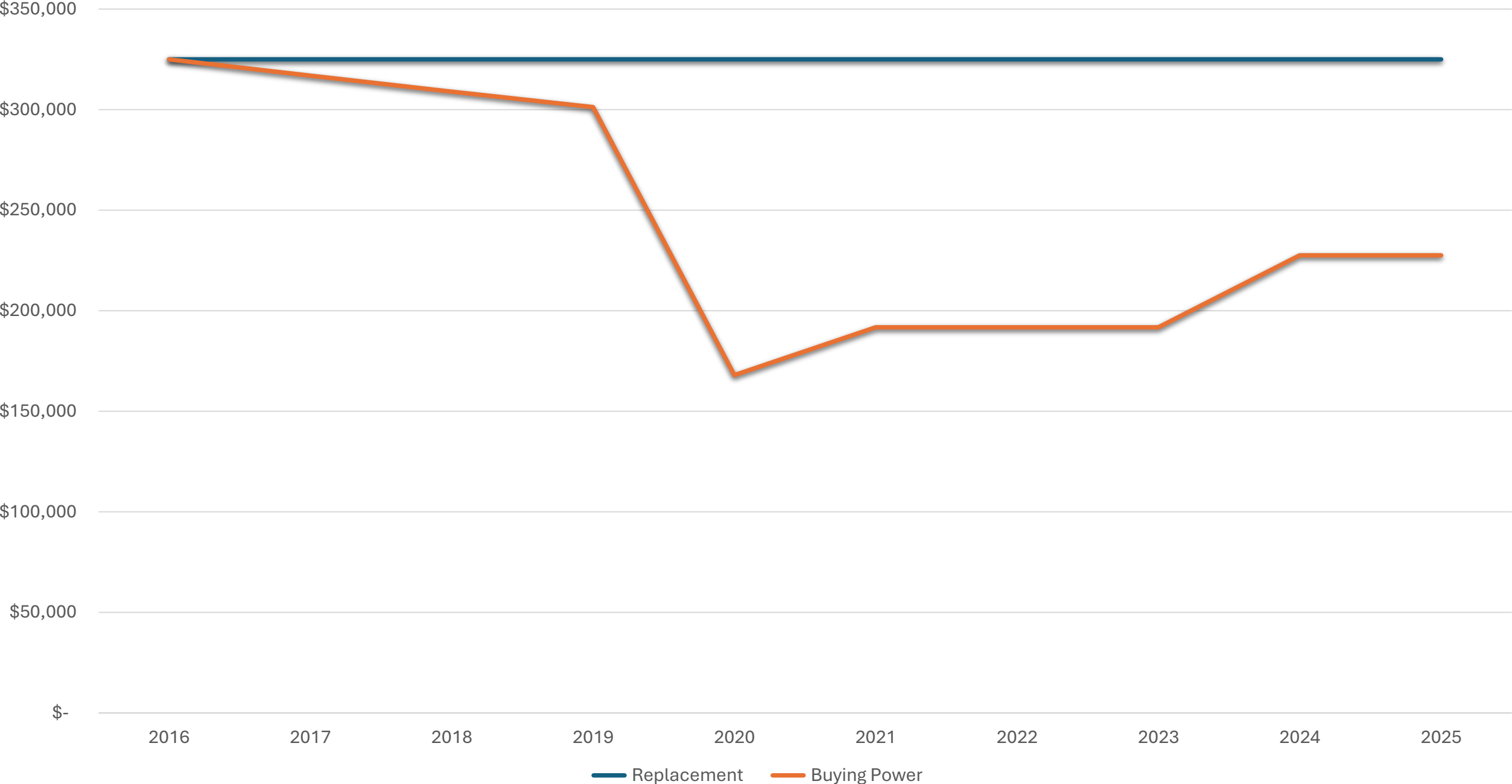
| | | COCHISE COUNTY SOLID WASTE | | | | | | |
|-----------------------|--|----------------------------|-------------------------|------------------|-------------------|--------------------|--------------------|----------------------|
| | | Operations | | | | | | |
| | | 5 YEAR BUDGET | | | | | | |
| | | FY 25 | FY 26 | FY 27 | FY 28 | FY 29 | FY 30 | FY 31 |
| | | Budget | Budget (New Projection) | Budget | Budget | BUDGET | BUDGET | BUDGET |
| Beginning Balance | | \$206,000 | \$32,751 | \$225,017 | \$133,314 | (\$81,201) | (\$442,810) | (\$960,023) |
| Revenues | | \$6,342,493 | \$6,861,379 | \$6,869,259 | \$6,877,277 | \$6,885,440 | \$6,893,755 | \$6,902,229 |
| Expenditures | | \$6,515,742 | \$6,669,113 | \$6,960,962 | \$7,091,792 | \$7,247,049 | \$7,410,969 | \$7,577,451 |
| Ending Balance | | \$32,751 | \$225,017 | \$133,314 | (\$81,201) | (\$442,810) | (\$960,023) | (\$1,635,246) |

Solid Waste Budget Excluding Recycling Existing Tipping Fee

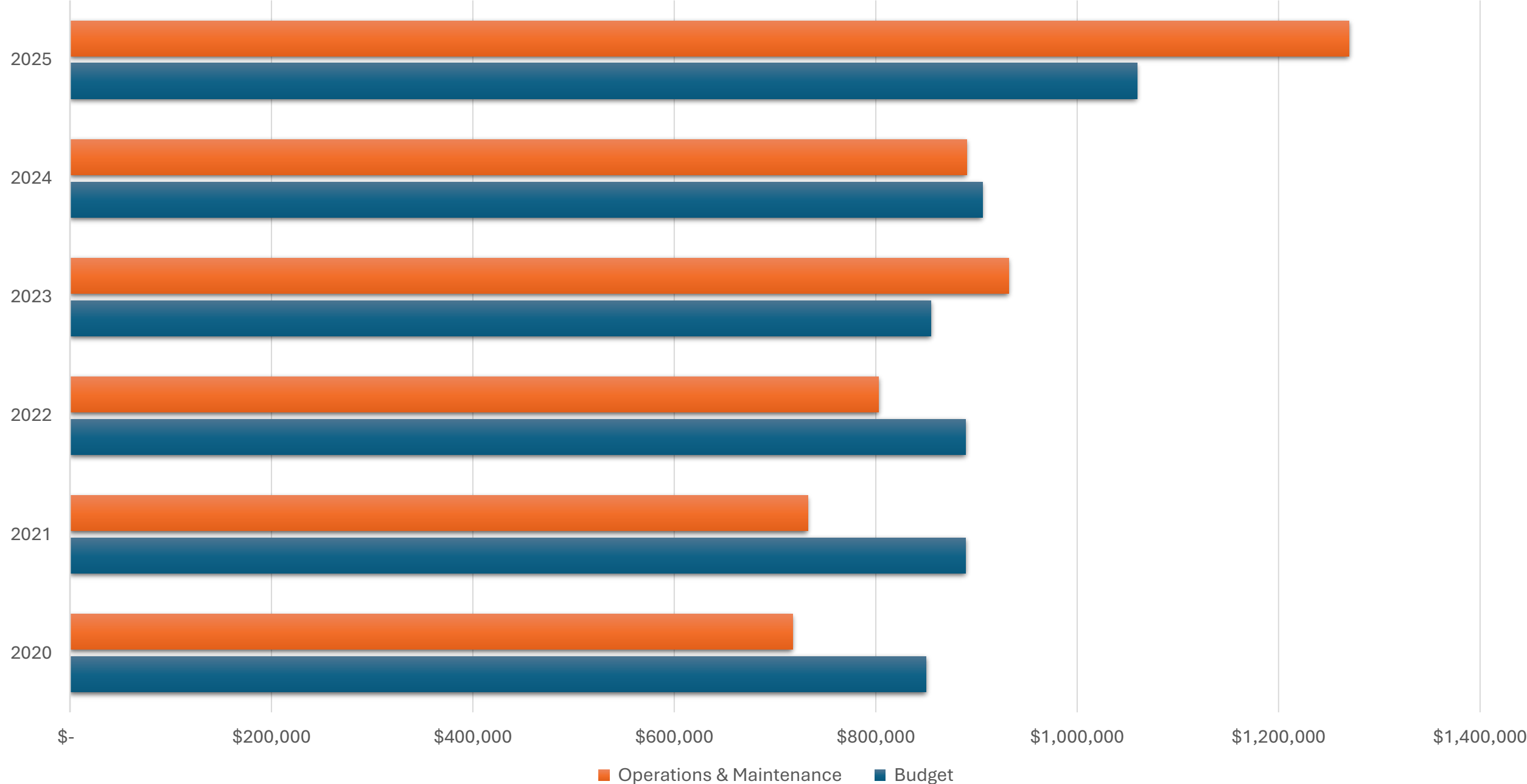
| | | COCHISE COUNTY SOLID WASTE | | | | | | |
|-----------------------|--|----------------------------|-------------------------|------------------|-----------------|--------------------|--------------------|----------------------|
| | | Operations | | | | | | |
| | | 5 YEAR BUDGET | | | | | | |
| | | FY 25 | FY 26 | FY 27 | FY 28 | FY 29 | FY 30 | FY 31 |
| | | Budget | Budget (New Projection) | Budget | Budget | BUDGET | BUDGET | BUDGET |
| Beginning Balance | | \$206,000 | \$32,751 | \$270,017 | \$218,314 | \$38,799 | (\$292,810) | (\$785,023) |
| Revenues | | \$6,342,493 | \$6,706,379 | \$6,709,259 | \$6,712,277 | \$6,715,440 | \$6,718,755 | \$6,722,229 |
| Expenditures | | \$6,515,742 | \$6,469,113 | \$6,760,962 | \$6,891,792 | \$7,047,049 | \$7,210,969 | \$7,377,451 |
| Ending Balance | | \$32,751 | \$270,017 | \$218,314 | \$38,799 | (\$292,810) | (\$785,023) | (\$1,440,246) |



Heavy Fleet Equipment Replacement



Heavy Fleet Equipment Operations & Maintenance

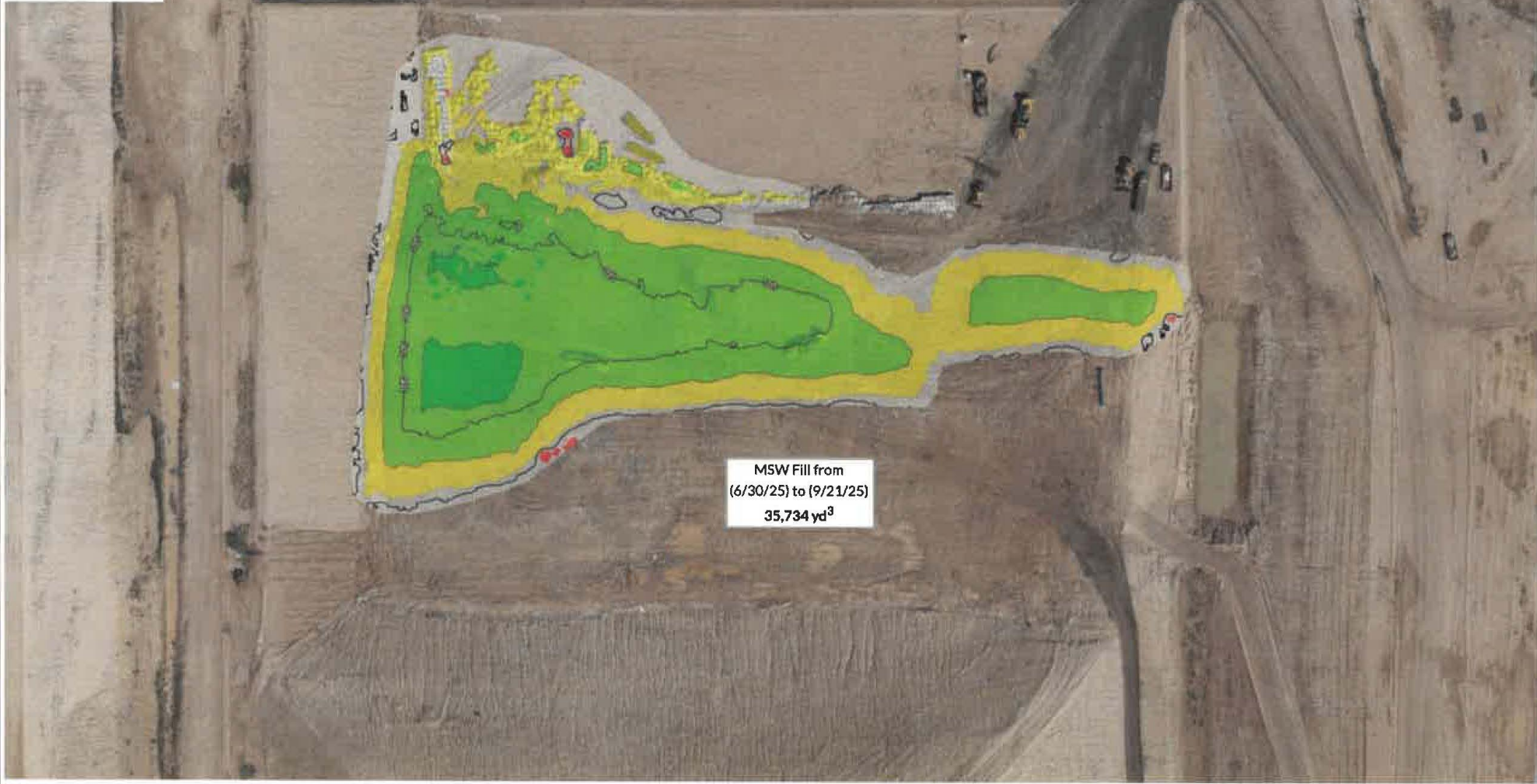
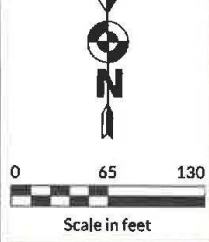


Solid Waste Budget Including Recycling New Tipping Fee \$68

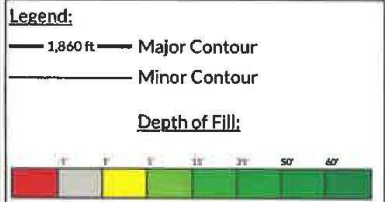
| COCHISE COUNTY SOLID WASTE | | | | | | | | |
|----------------------------|-----------------|-------------------------|------------------|------------------|------------------|-----------------|--------------------|--|
| Operations | | | | | | | | |
| 5 YEAR BUDGET | | | | | | | | |
| | FY 25 | FY 26 | FY 27 | FY 28 | FY 29 | FY 30 | FY 31 | |
| | Budget | Budget (New Projection) | Budget | Budget | BUDGET | BUDGET | BUDGET | |
| Beginning Balance | \$206,000 | \$32,751 | \$225,017 | \$133,314 | \$246,799 | \$213,190 | \$23,977 | |
| Revenues | \$6,342,493 | \$6,861,379 | \$6,869,259 | \$7,205,277 | \$7,213,440 | \$7,221,755 | \$7,230,229 | |
| Expenditures | \$6,515,742 | \$6,669,113 | \$6,960,962 | \$7,091,792 | \$7,247,049 | \$7,410,969 | \$7,577,451 | |
| Ending Balance | \$32,751 | \$225,017 | \$133,314 | \$246,799 | \$213,190 | \$23,977 | (\$323,246) | |

Solid Waste Budget Excluding Recycling New Tipping Fee \$68

| COCHISE COUNTY SOLID WASTE | | | | | | | | |
|----------------------------|-----------------|-------------------------|------------------|------------------|------------------|------------------|--------------------|--|
| Operations | | | | | | | | |
| 5 YEAR BUDGET | | | | | | | | |
| | FY 25 | FY 26 | FY 27 | FY 28 | FY 29 | FY 30 | FY 31 | |
| | Budget | Budget (New Projection) | Budget | Budget | BUDGET | BUDGET | BUDGET | |
| Beginning Balance | \$206,000 | \$32,751 | \$270,017 | \$218,314 | \$366,799 | \$363,190 | \$198,977 | |
| Revenues | \$6,342,493 | \$6,706,379 | \$6,709,259 | \$7,040,277 | \$7,043,440 | \$7,046,755 | \$7,050,229 | |
| Expenditures | \$6,515,742 | \$ 6,469,113 | \$ 6,760,962 | \$ 6,891,792 | \$ 7,047,049 | \$ 7,210,969 | \$ 7,377,451 | |
| Ending Balance | \$32,751 | \$270,017 | \$218,314 | \$366,799 | \$363,190 | \$198,977 | (\$128,246) | |



| |
|---|
| <u>09/11/23 - 12/12/23</u> (19,341 T) x (2,000 lb) / 29,388 yd ³ = 1,316 lb/yd ³ |
| <u>12/13/23 - 04/17/24</u> (26,941 T) x (2,000 lb) / 42,762 yd ³ = 1,260 lb/yd ³ |
| <u>04/18/24 - 06/11/24</u> (12,900 T) x (2,000 lb) / 22,322 yd ³ = 1,156 lb/yd ³ |
| <u>06/12/24 - 09/11/24</u> (20,100 T) x (2,000 lb) / 29,517 yd ³ = 1,362 lb/yd ³ |
| <u>09/12/24 - 12/11/24</u> (20,098 T) x (2,000 lb) / 35,719 yd ³ = 1,125 lb/yd ³ |
| <u>12/12/24 - 04/14/25</u> (26,727 T) x (2,000 lb) / 53,189 yd ³ = 1,005 lb/yd ³ |
| <u>04/15/25 - 06/29/25</u> (17,046 T) x (2,000 lb) / 32,254 yd ³ = 1,057 lb/yd ³ |
| <u>06/30/25 - 09/21/25</u> (18,980 T) x (2,000 lb) / 35,734 yd ³ = 1,062 lb/yd ³ |



This drawing is for illustration only and not for permitting, bidding or construction.

Prepared for:
Cochise County

Fill Area Isopach
Whetstone Landfill
Scan Date: September 22, 2025



Benson Transfer Station Rehab





Sierra Vista Transfer Station Rehab

Double Adobe Rural Transfer Station Hours

Change Hours of Operation

FROM

- Wednesday 8am – 12pm
- Saturday 8am – 4pm

TO

- Wednesday 8am – 2pm
- Saturday 8am – 2pm

Questions?

