

RESOLUTION 26-03

**GRANTING AN ELECTRICITY SERVICES FRANCHISE TO
SOUTHLINE TRANSMISSION, L.L.C.**

KNOW ALL MEN BY THESE PRESENTS, THAT,

WHEREAS, SOUTHLINE TRANSMISSION, L.L.C., a Delaware limited liability company, (“Applicant” or “Grantee”), has applied and petitioned, pursuant to A.R.S. § 40-283, to the Board of Supervisors of Cochise County, Arizona, for the granting of a franchise to construct, install, operate, repair, replace, and maintain electric transmission facilities along, over, under, and across public highways, roads, streets, alleys, and rights-of-way within Cochise County, Arizona; and

WHEREAS, Applicant seeks authority to use specified County rights-of-way for the construction and operation of a high-voltage electric transmission line and associated facilities, as more particularly described in Exhibit A attached hereto and incorporated herein by reference; and

WHEREAS, reasonable public notice of this Application has been provided in the manner required by A.R.S. § 40-283 of the filing of said Application and of the public hearing on this matter set for February 24, 2026, at the regular meeting place of the Board in the City of Bisbee, Arizona, as the time and place for the consideration of the matter; and

WHEREAS, it appears from the affidavit of publication of the Herald/Review that due and regular notice of said date, time, and place set for the consideration of such action has been published once a week for three (3) consecutive weeks prior to the said date of the hearing, to-wit: in the issues of the 28th day of January 2026; the 4th day of February 2026; and the 11th day of February 2026, of said newspaper, and the matter being called on February 24, 2026, at 10:00 o'clock a.m., and it appearing that the Board of Supervisors has not received a petition signed by more than fifty percent (50%) of the qualified electors of said County asking the Board to deny said Application on or before the date set for consideration thereof; and

WHEREAS, said Application came on regularly to be heard on the 24th day of February 2026, before the Board of Supervisors of Cochise County, and the Board considered the Application for the franchise, and there being good cause to grant this Application.

NOW, THEREFORE, it being determined by the Board of Supervisors of Cochise County that the grant of this franchise is regular, proper, authorized by law and in the best interest of Cochise County, and the inhabitants thereof.

NOW, THEREFORE, IT IS HEREBY ORDAINED:

1. That the Board of Supervisors of Cochise County, Arizona, acting for and on behalf of Cochise County (“County”), does hereby grant unto **SOUTHLINE TRANSMISSION, L.L.C.**, its successors and permitted assigns (“Grantee”), the right, privilege, license, and franchise to construct, install, operate, repair, replace, and maintain electric transmission facilities, including but not limited to poles, towers, wires, conductors, foundations, conduits, and other necessary appurtenances, along, over, under, and across the public highways, roads, streets, alleys, and rights-of-way of Cochise County, Arizona, exclusive of State highways and areas within the incorporated limits of any city or town, and only within those locations described in Exhibit A.
2. The County reserves the right to impose future restrictions, limitations, and conditions upon the exercise of the rights granted herein as it deems necessary for the public safety and welfare; provided, however, that prior to imposing any such future restrictions, limitations, or conditions, the County shall consult with the Grantee within a period of sixty (60) days before such restrictions, limitations, or conditions take effect. The Grantee shall comply with all lawful and applicable ordinances of Cochise County regulating the conduct of work within the public rights-of-way, as such ordinances are now enacted or may be amended or adopted from time to time. The Grantee is required to obtain a separate Right-of-Way Use Permit from the County prior to initiating any construction within the public right-of-way and to pay all applicable fees for associated inspections.
3. The franchise granted hereby shall not be exclusive, and nothing herein shall be construed to prevent the County from granting other like or similar franchises to any other person, firm, or corporation.

4. The Grantee shall bear all expenses and costs, including damages and compensation for the alteration of the direction, surface, grade, or alignment of a public roadway or for revenues lost by the Grantee, which may arise in connection with its exercise of the rights granted herein.
5. The Grantee shall erect, construct, and maintain all facilities authorized herein in a good and workmanlike manner and in compliance with all valid laws, ordinances, and regulations, which may be in force from time to time. All such work shall be performed in such a manner as may be necessary to avoid any unreasonable damage, disturbance, or modification to existing public rights-of-ways, including roads, streets, highways, bridges, borrow ditches or shoulders thereon.
6. The Grantee shall, immediately upon erecting, constructing, replacing or repairing its facilities, or any part thereof, at its own cost and expense, restore any effected public right-of-way, including any road, street, highway, bridge, borrow ditch or shoulder thereon, to not less than the same condition which existed prior to the Grantee's action.
7. The County does not waive or relinquish any rights it may have to the full and complete use of the public rights-of-way subject to this franchise, whether for road purposes or otherwise. The rights of the County in and to the use of the right-of-way are, and shall be, paramount and superior to the rights of the Grantee. In the event that the location of the Grantee's facilities may interfere or conflict with the County's use, expanded use, alteration, improvement, or maintenance of the County's rights-of-way, the County may require the Grantee to relocate all facilities which give rise to such interference or conflict as provided below.
 - A. If County requires Grantee to relocate Grantee's facilities which are located in private easements obtained by Grantee prior to County's acquisition of said property from which the facilities must be relocated, the entire cost of relocating Grantee's facilities (including the cost of purchasing a new private easement if necessary) shall be borne by County. County shall also bear the entire cost of all subsequent relocations of the relocated facilities required by County, until such time as County condemns or purchases Grantee's private easement.

- B. Except as covered in Paragraph A above, Grantee shall bear the entire cost of relocating its facilities located on public rights-of-way, the relocation of which is necessary for County's carrying out of its governmental functions. Notwithstanding the foregoing, if Grantee is requested to perform work of a temporary nature on a governmental project to relieve construction problems which could be relieved by other means, the cost of said temporary work will be borne by County or County's contractor working on the governmental project. Governmental functions are those duties imposed on County, where the duties involve a general public benefit, not in the nature of a corporate or business undertaking for the corporate benefit and interest of County. Governmental functions include, but are not limited to, the following:
1. Any and all improvements to County's public rights-of-way;
 2. Establishing and maintaining domestic water systems, sanitary sewers, storm drains, and related facilities;
 3. Establishing and maintaining County parks, parking spaces, parkways, pedestrian malls, or grass, shrubs, trees and other vegetation for the purpose of landscaping any street or public property;
 4. Providing fire protection and other public safety functions; and
 5. Collection and disposal of garbage and recyclables.
- C. County will bear the entire cost of relocating any of Grantee's facilities, the relocation of which is necessitated by the construction of improvements by or on behalf of County in furtherance of a proprietary function. All functions of County which are not governmental are proprietary.
- D. If County participates in the cost of relocating Grantee's facilities for any reason, the cost of relocation to County shall not include any upgrade or improvement of Grantee's facilities as they existed prior to relocation.
- E. County will not exercise its right to require Grantee's facilities to be relocated in an unreasonable or arbitrary manner, or to avoid its obligation under the Franchise. County agrees to notify Grantee during the planning and design of County's projects in rights-of-way that may require relocation

of Grantee's facilities and to coordinate its construction plans and schedules with Grantee to determine the most cost-effective design to mitigate Grantee's cost to relocate its facilities.

- F. County agrees it will not require Grantee to relocate its facilities located within the public rights-of-way without providing Grantee adequate space within the rights-of-way to relocate the facilities that must be moved.
 - G. County shall not plant any tree that can normally grow to a height of more than 25 feet under or adjacent to Grantee's overhead power lines in the public rights-of-way. Grantee shall have the authority to prune or remove any trees or shrubs located within or hanging over the limits of the public rights-of-way of County that in the judgment of Grantee may interfere with the construction, or endanger the operation, of the lines and/or facilities of Grantee. Except in cases of emergency posing immediate safety hazards, Grantee shall provide at least ten (10) days of written notice to County prior to commencing vegetation removal, and shall coordinate such activities to minimize public disruption. All said vegetation management work is to be done at Grantee's expense and pursuant to A.N.S.I. Standard A300.
8. Subject to any statutory or common law defenses and/or rights of contribution available at law, the Grantee assumes the responsibility for all liability for any injury or damage to any person or property, or to the road and right-of-way itself, caused by or arising out of the exercise of the rights granted herein and attributable to any act or omission of the Grantee, unless such injury or damage is caused by the negligent or willful and wanton acts or omissions by the County, its officers, departments, employees, or agents. The Grantee shall indemnify, defend and hold harmless Cochise County, its officers, departments, employees and agents from and against any and all suits, actions, legal or administrative proceedings, claims, demands or damages of any kind or nature, including all costs of legal defense, arising out of the exercise of these rights which are attributed to any act or omission of the Grantee, its agents, employees, or anyone acting under its direction, control or on its behalf; provided, however, that such claims, expenses, and losses are not the result of the willful misconduct or negligent acts or omissions of the County, its officers, departments, employees, or agents.
9. The County grants this franchise for a term of twenty-five (25) years from the date of its authorization. This franchise may not be sold, leased, assigned, conveyed or transferred in any manner, in whole or in part, including pursuant

- to the sale or merger of the Grantee corporation itself, without the express written consent of the County, which consent shall not be unreasonably withheld. Notwithstanding the foregoing, the Grantee may, upon written notice to the County, assign or transfer this franchise, in whole or in part, to an affiliate of the Grantee, provided that such affiliate is under common ownership or control with the Grantee and expressly assumes in writing all obligations and liabilities of the Grantee under this franchise. Any assignment or transfer to a non-affiliate third party shall require the prior written consent of the County.
10. County and Grantee acknowledge that Arizona law does not allow counties to collect franchise fees associated with an electricity services franchise. If, prior to the termination or expiration of this Franchise Agreement, Arizona law changes such that the collection of franchise fees by Arizona counties is expressly authorized by Arizona statute, County and Grantee agree to work in good faith to negotiate a potential amendment to this Franchise Agreement regarding potential application and collection of franchise fees. If this Franchise Agreement is amended to include a franchise fee, any such franchise fee shall not exceed the amount customarily charged by the municipalities in which Grantee provides electric service and shall be administered under the same or substantially similar terms and conditions. Notwithstanding the foregoing, no franchise fee will be charged unless approved by voters through the election process as required by County resolutions and ordinances.
 11. The County may terminate this franchise in the event that the Grantee fails to comply with the terms and conditions of this franchise. The Board of Supervisors, or its designee, shall provide the Grantee with written notice of noncompliance and allow the Grantee a period of not less than sixty (60) days to remedy any breach. If the Grantee continues to fail to comply with the terms of this franchise after this notice and remedy period, the Board of Supervisors may, following a public hearing, revoke all rights granted herein and render this franchise null and void.
 12. Upon the termination or expiration of this Franchise, if Grantee shall not have acquired and accepted an extension or renewal hereof, it may remove its facilities and system within the Franchise Area or at its option, may continue operating its facilities and system therein, but it shall be required to obtain proper permits each time it makes additional extensions upon, over, along, across, and under the public rights-of-way within County unless or until such time as a new franchise is obtained or the system and facilities are removed or are acquired by County through the exercise of its power of eminent domain.

13. This franchise will not be effective for any purpose until the Grantee has indicated its acceptance in writing below.
14. The rights, privileges, and franchise granted herein are made pursuant to the laws of Arizona, including A.R.S. §§ 40-283 and 9-582, et seq., which are incorporated herein by reference.

IN WITNESS WHEREOF, the Board of Supervisors of the County of Cochise, State of Arizona, has caused these presents to be executed and signed by the Chairman of the Board of Supervisors on this 24th day of February, 2026.

COCHISE COUNTY BOARD OF SUPERVISORS:

Frank Antenori, Chairman

ATTEST:

Lara Loewenheim
Clerk of the Board

APPROVED AS TO FORM:



2/17/2026

Dylan Hendel
Civil Deputy County Attorney

RESOLUTION 26-03

Granting an Electricity Services Franchise to Southline Transmission, L.L.C.

Page | 8

ACCEPTANCE OF FRANCHISE

This is to certify that the Grantee, **SOUTHLINE TRANSMISSION, L.L.C.**, has on this 18 day of February 2026, accepted the foregoing franchise. Grantee agrees that it will be bound by, observe, and carry out the terms and conditions of such franchise.


Dated: 2/18/2026

GRANTEE:


SOUTHLINE TRANSMISSION, L.L.C.

By: GU Southline LLC, its Managing Member

By: Grid United LLC, its sole member

By: ^{Signed by:}


Michael P. Skelly, Manager

By: ^{DocuSigned by:}


Stephen H Douglas, Manager

CERTIFICATE OF CLERK

I, **Lara Loewenheim**, Clerk of the Board of Supervisors of Cochise County, Arizona, do hereby certify that the foregoing excerpt from the minutes of the meeting of the Board of Supervisors of Cochise County, Arizona, held on Tuesday, February 24, 2026, constitutes a true and correct copy of the said minutes insofar as they relate to the Application of **SOUTHLINE TRANSMISSION, L.L.C.**, a Delaware limited liability company, for an electricity services franchise in the County and to the granting of said franchise pursuant to the resolution hereinabove set out, all as appears in the official records of the Board of Supervisors.

IN WITNESS WHEREOF, I have set my hand and official seal of the Board of Supervisors of Cochise County, Arizona, this 24th day of February, 2026.

Lara Loewenheim
CLERK, BOARD OF SUPERVISORS
COCHISE COUNTY, ARIZONA

EXHIBIT A

SURVEYS AND LEGAL DESCRIPTIONS OF RIGHTS-OF-WAY

Exhibit A consists of the surveys, maps, and official legal descriptions of the County rights-of-way proposed to be used by Southline Transmission, L.L.C., as submitted with its Application for Franchise, including the survey plats and alignment maps contained therein.

APPLICATION FOR FRANCHISE
COCHISE COUNTY, ARIZONA



Applicant's Name Southline Transmission, L.L.C.

Address: 712 Main Street, Suite 2500

City: Houston

State: TX

Zip: 77002

Telephone: (877) 359-1610

Emergency Telephone:

Who will own and operate the system, if other than applicant:

Name

Address:

City:

State:

Zip:

Telephone:

Emergency Telephone:

Indicate the type of franchise you are applying for:

Cable TV

Electricity

Gas

Sewer

Water

Telecommunications

Fiber Optic

Note: If you are claiming an exemption from obtaining a franchise please specify reason:

Does the applicant have an existing or proposed agreement with anyone proposing to have an ownership interest in the franchise? Yes No

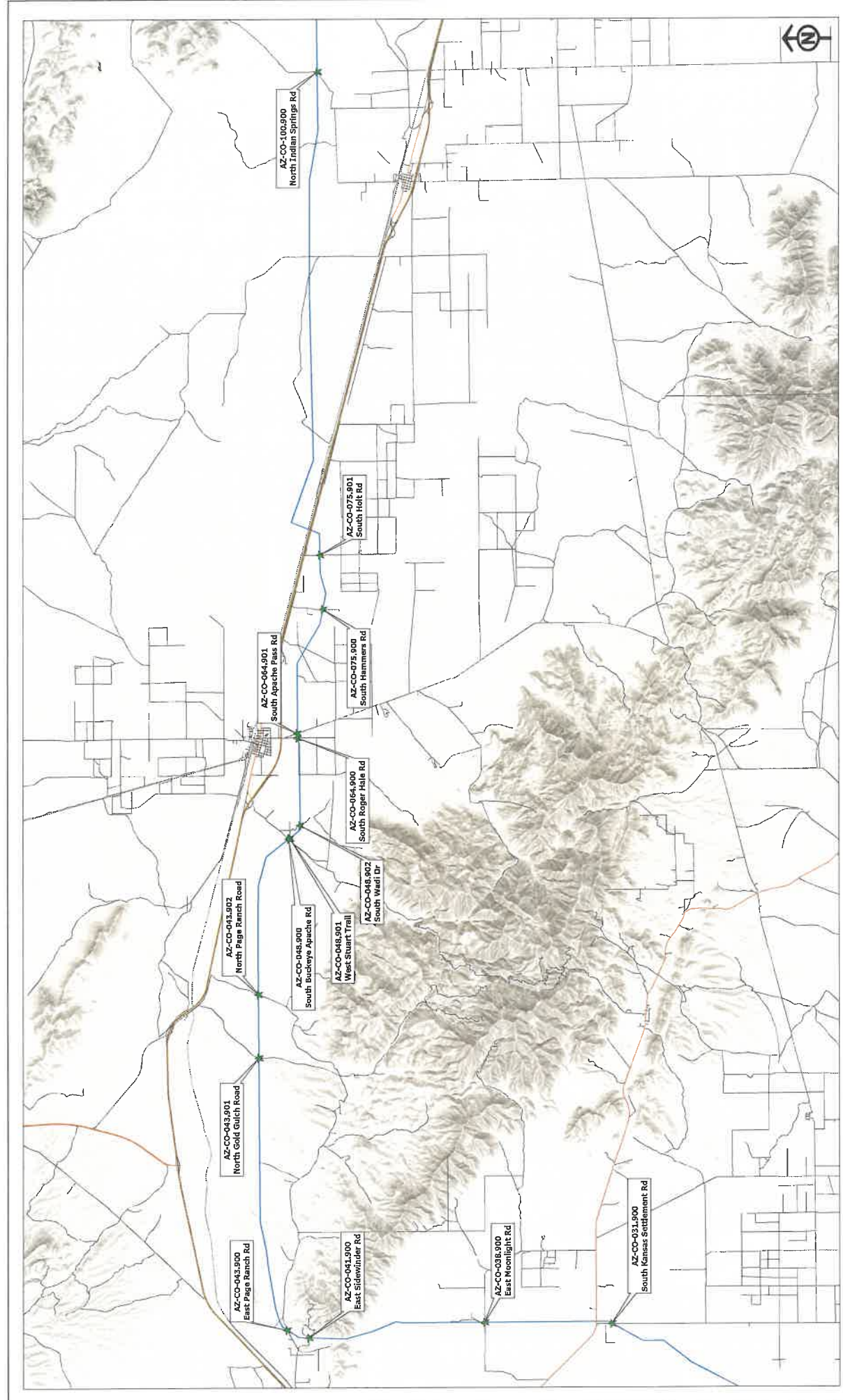
If the answer is yes, please attach a statement from Corporate Council setting forth the name(s) and address(es) of the person(s) with such ownership interest, and a copy of the agreement.

What is the applicant's experience in providing service for the utility for which applicant is applying for a franchise?

Applicant is building a cross country multi state transmission line. Please see attached.

How many people do you anticipate serving with this utility?

NOTE: This Application must be accompanied by a \$500 nonrefundable Franchise Application Fee and a legal description of the boundary of the area to be served by the Franchise.



Cochise County Road Crossing Exhibit

Building America's Next-Generation Infrastructure to Power Arizona's Future

Southline Transmission Project (Southline) is a 280-mile, high-voltage transmission line that will connect the electrical transmission systems of the El Paso and Tucson areas. Southline will bidirectionally transport power and enable electricity generated in the Desert Southwest to reach new markets while improving grid reliability for the region.

Status: Southline successfully completed an in-depth, multi-year federal and state permitting process. Southline is in the final stages of development, which includes completing detailed engineering, performing pre-construction environmental surveys, and finalizing commercial arrangements.

Southline expects to begin construction in mid-2026. The first phase could be operational in 2028, with the full project online in 2029.

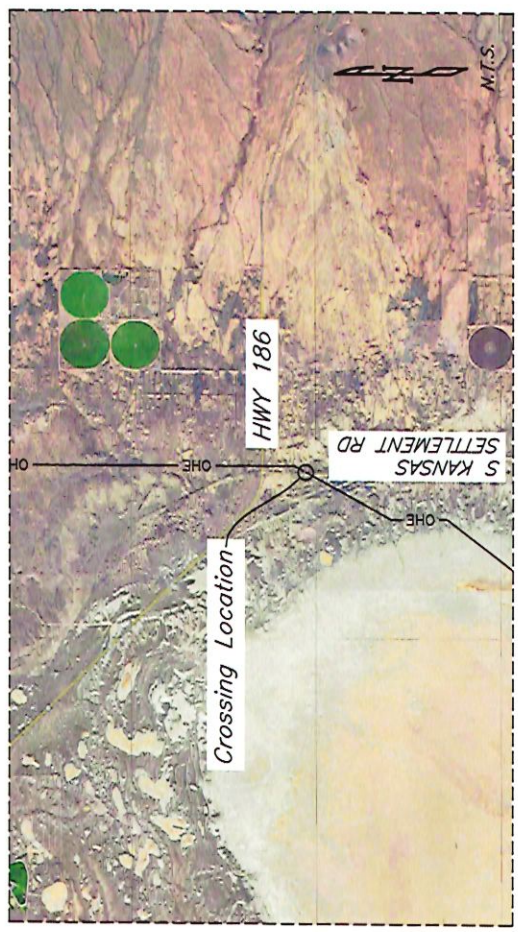
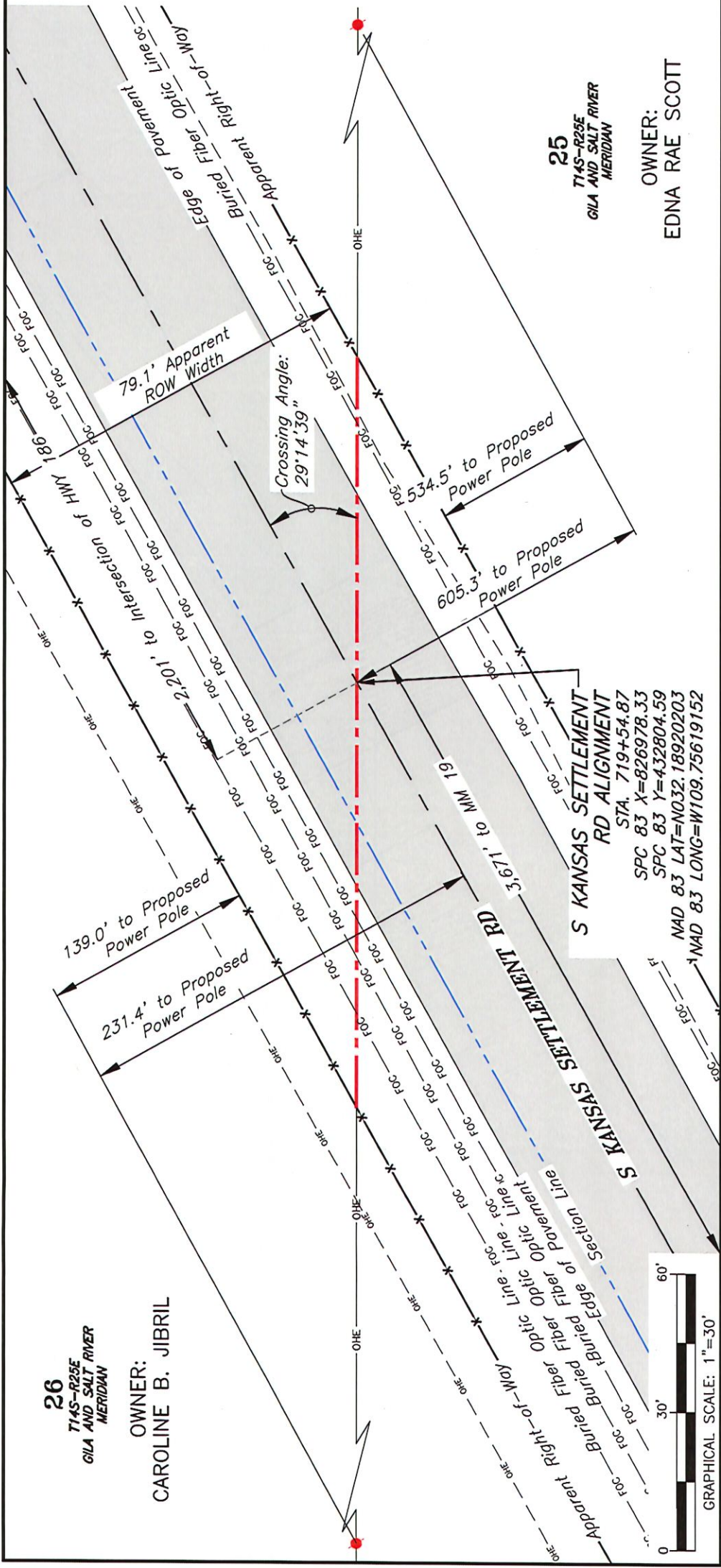
Phase 1: Pima County, Arizona, to Grant County, New Mexico

Phase 2: Grant County, New Mexico, to Doña Ana County, New Mexico



26
T14S-R25E
GILA AND SALT RIVER
MERIDIAN

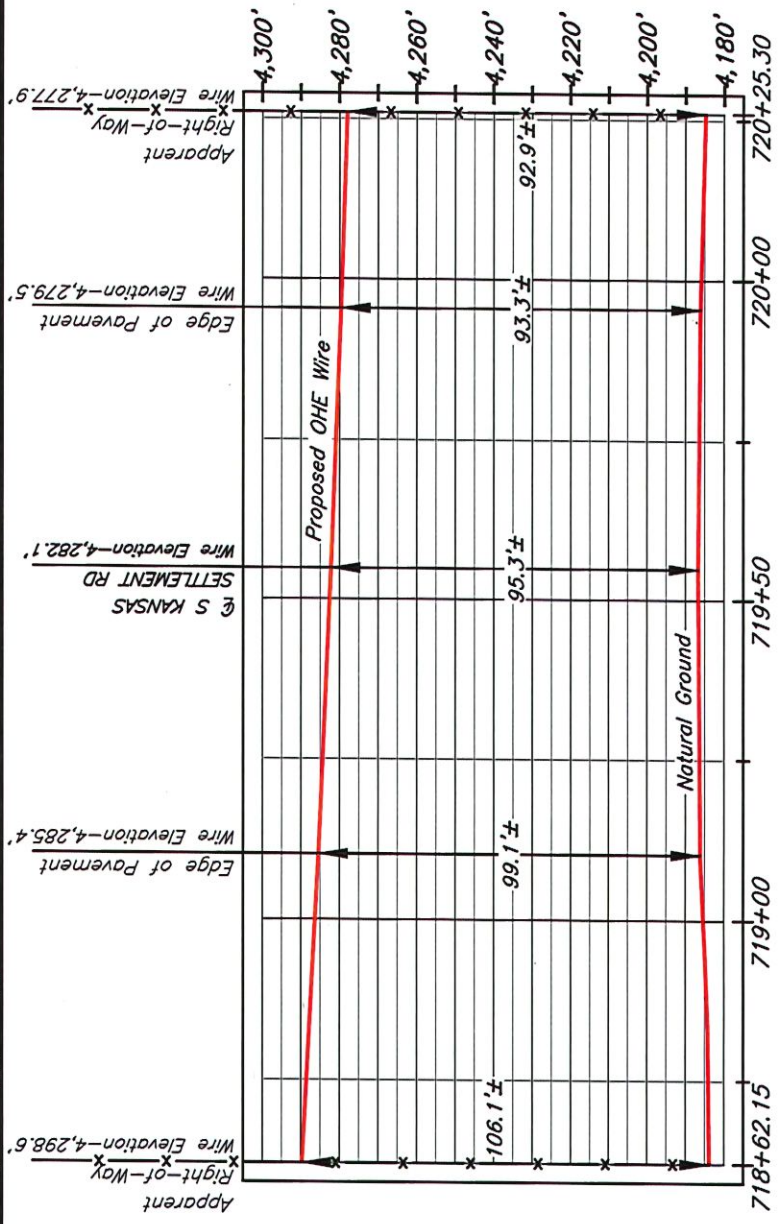
OWNER:
CAROLINE B. JIBRIL



- LEGEND**
- Proposed Electric Line
 - Existing Road
 - Apparent Right-of-Way & Fence
 - Section Line
 - Buried Fiber Optic Cable
 - Toe of Slope
 - Existing Electric Line
 - Proposed Power Pole

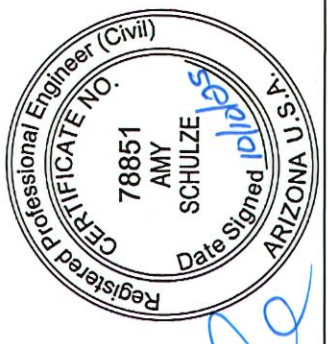
25
T14S-R25E
GILA AND SALT RIVER
MERIDIAN

OWNER:
EDNA RAE SCOTT



PROFILE SCALE
HORIZONTAL: 1"=30'
VERTICAL: 1"=20'

- NOTES:**
1. BASIS OF BEARINGS: ARIZONA STATE PLANE COORDINATE SYSTEM, ARIZONA EAST NAD 83, ZONE 0201.
 2. IN ADDITION TO THE SITE-SPECIFIC INFORMATION PROVIDED IN THE DRAWING, GENERAL REQUIREMENTS INCLUDED IN PERMITS AND APPROVAL FROM FEDERAL, STATE AND LOCAL AGENCIES SHALL ALSO APPLY.
 3. POLES AND ALL OTHER ABOVE GROUND APPURTENANCES WILL BE LOCATED OUTSIDE OF THE HIGHWAY RIGHT-OF-WAY.
 4. NTB ASSOCIATES, INC. ASSUMES NO LIABILITY, WRITTEN OR IMPLIED AS TO THE LOCATION OR DEPTH OF PIPELINES OR UNDERGROUND UTILITY LINES. CONTRACTORS SHALL USE "ONE CALL" SYSTEM PRIOR TO BEGINNING WORK.
 5. LOWEST ELEVATION OF WIRE EXCEEDS NATIONAL ELECTRIC SAFETY CODE MINIMUM CLEARANCE OF 25.2 FT. CONDUCTOR SHOWN AT MAXIMUM SAG.
 6. 2x BUNDLE 1590 KCM ACSSR "LAPWING" CONDUCTOR
 7. STATIONING ON PROFILE IS SOUTHLINE CENTERLINE STATIONING.
 8. WIRE ELEVATIONS PROVIDED BY POWER ENGINEERS, VIA PLS-CADD PROGRAM.
- NTB ASSOCIATES, INC. TAKES NO RESPONSIBILITY FOR THE ACCURACY OF THE ELEVATIONS.



Amy Schulze, PE
AZ Reg. No. 78851

Should any discrepancies be discovered please notify us immediately.

NTB ASSOCIATES, INC.
525 Louisiana Avenue, Shreveport, LA 71101
318.226.9191 www.ntbainc.com

SOUTHLINE TRANSMISSION
PROPOSED OHE CENTERLINE
CROSSING S KANSAS SETTLEMENT RD

REV.	BY	DATE	DESCRIPTION

SCALE: 1"=30'
DRAWN BY: GWJ
CHECKED BY: AKS
SURVEYED BY: EW

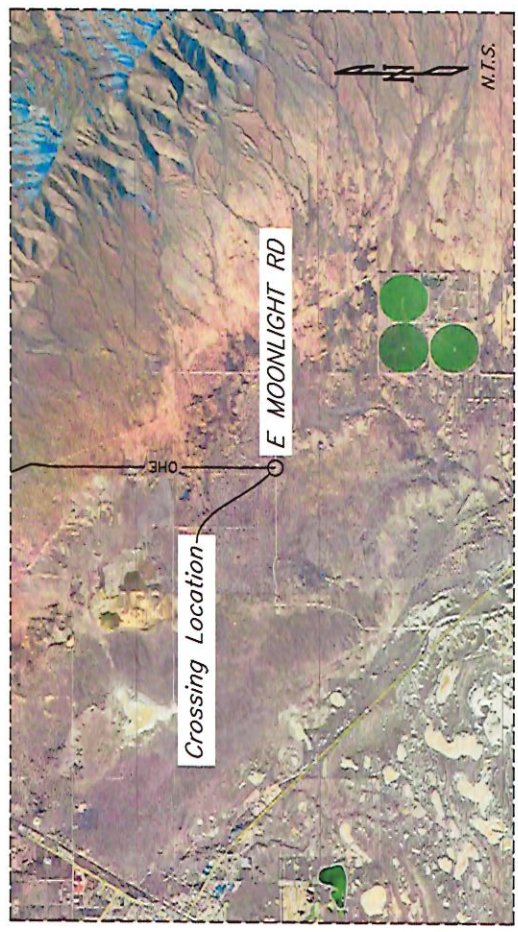
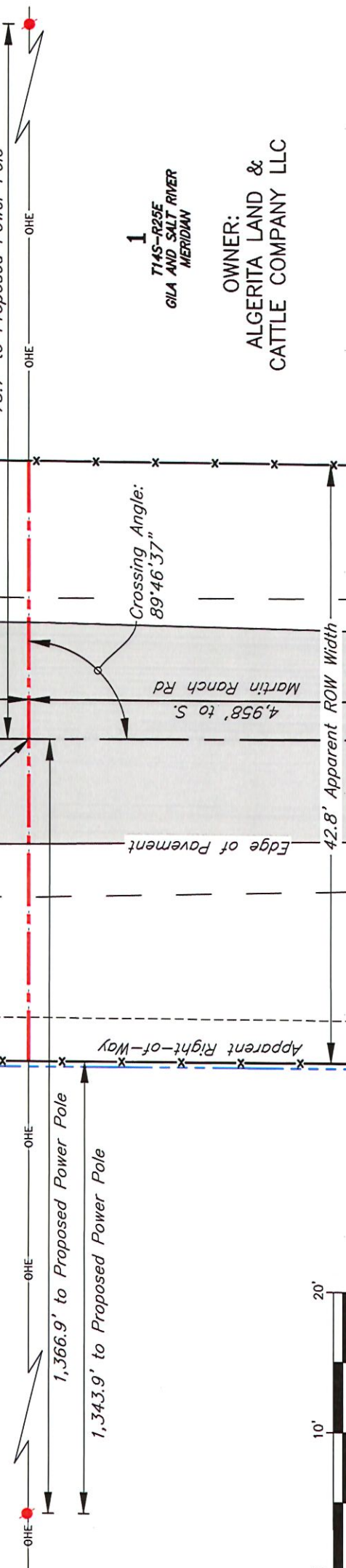
PROJECT NO.: 24034010
DATE: 09-19-25
DATE: 09-19-25
DATE: 01-16-24

SOUTHLINE
TRANSMISSION PROJECT

12
T14S-R25E
GILA AND SALT RIVER
MERIDIAN

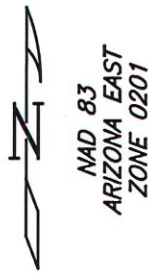
OWNER:
STATE OF ARIZONA

E MOONLIGHT RD ALIGNMENT
STA. 900+93.33
SPC 83 X=827215.16
SPC 83 Y=450868.38
NAD 83 LAT=N032.23885446
NAD 83 LONG=W109.75520241



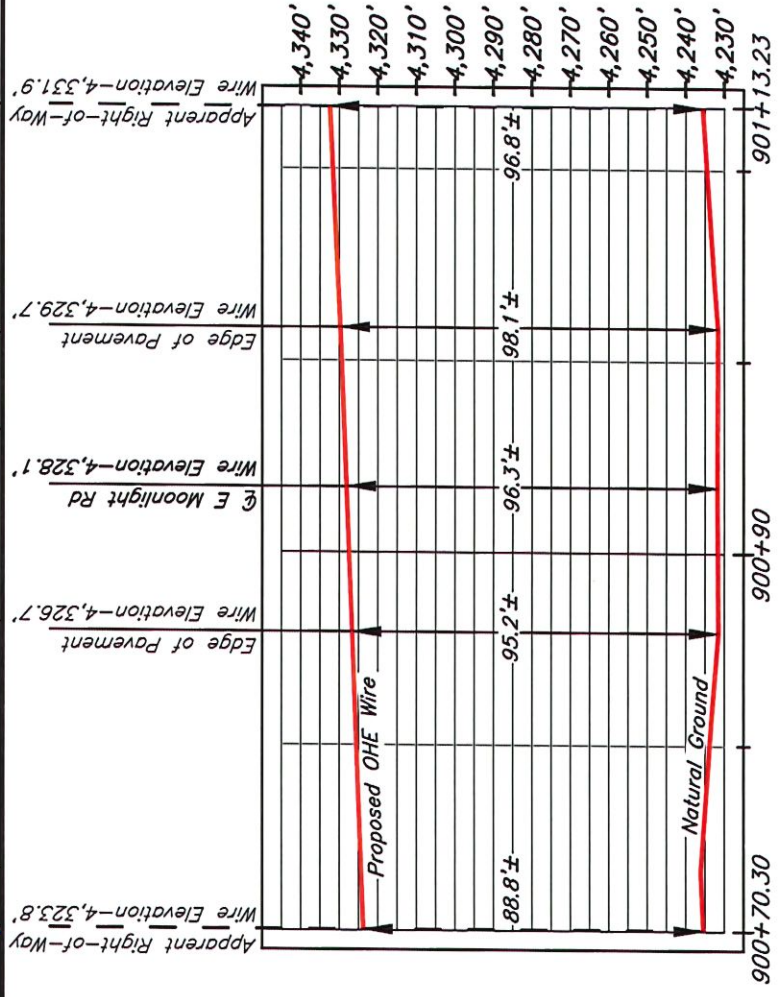
LEGEND

- Proposed Electric Line
- Existing Road
- x-x- Apparent Right-of-Way & Fence
- Section Line
- Toe of Slope
- Breakline of Grade
- Proposed Power Pole



1
T14S-R25E
GILA AND SALT RIVER
MERIDIAN

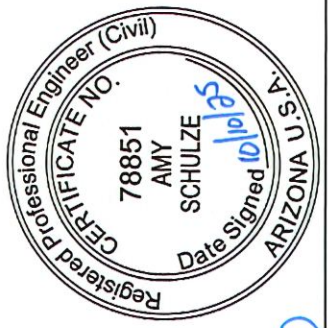
OWNER:
ALGERITA LAND &
CATTLE COMPANY LLC



PROPOSED OHE @ E MOONLIGHT RD CROSSING
(LOOKING WEST)

PROFILE SCALE
HORIZONTAL: 1"=10'
VERTICAL: 1"=20'

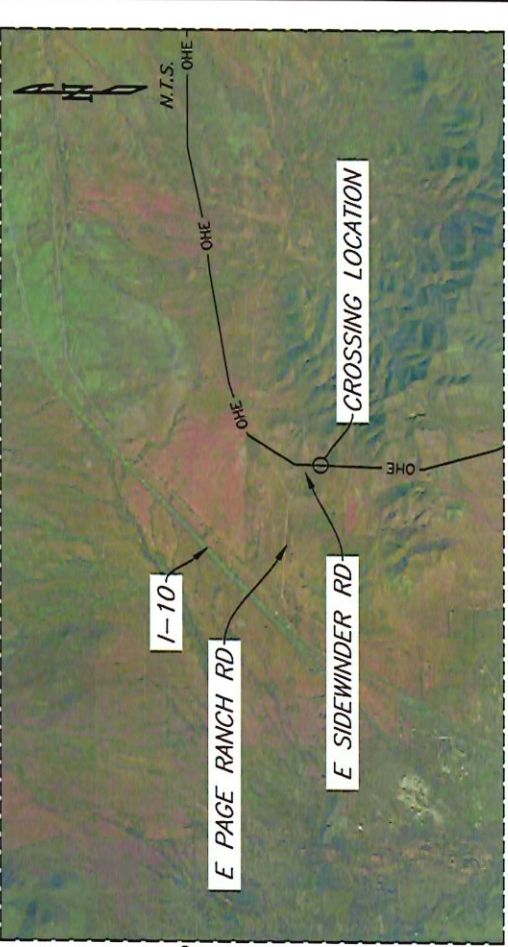
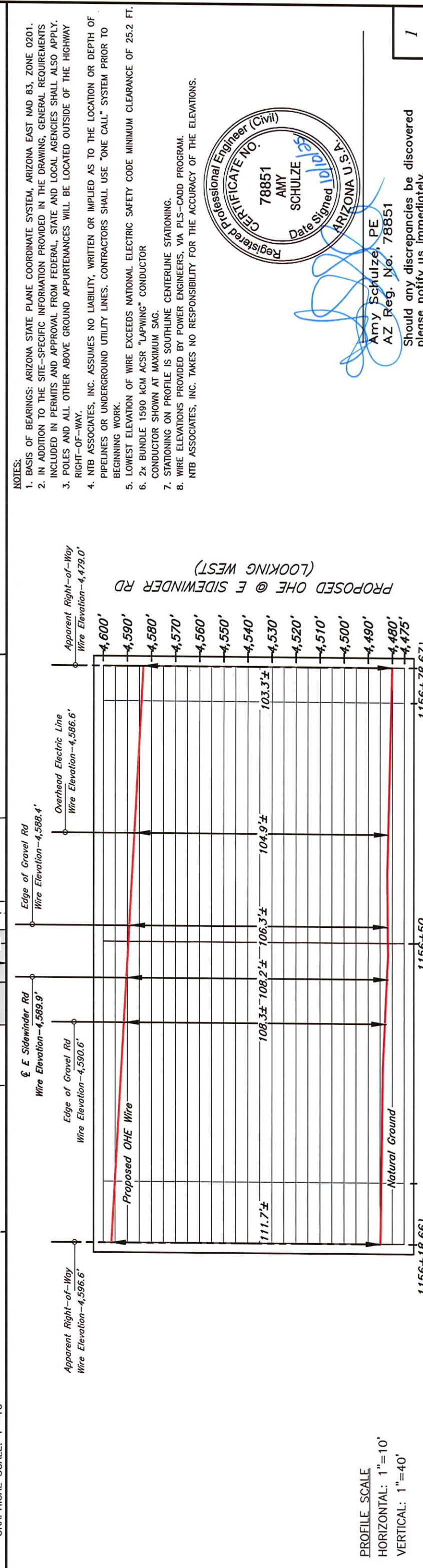
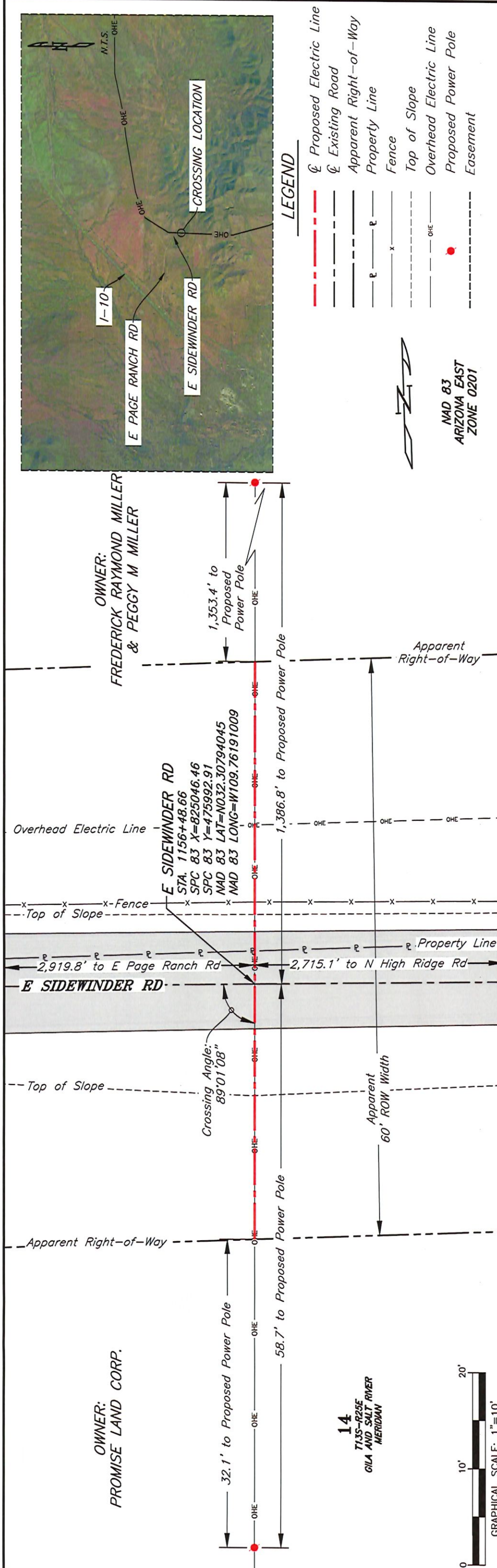
- NOTES:
1. BASIS OF BEARINGS: ARIZONA STATE PLANE COORDINATE SYSTEM, ARIZONA EAST NAD 83, ZONE 0201.
 2. IN ADDITION TO THE SITE-SPECIFIC INFORMATION PROVIDED IN THE DRAWING, GENERAL REQUIREMENTS INCLUDED IN PERMITS AND APPROVAL FROM FEDERAL, STATE AND LOCAL AGENCIES SHALL ALSO APPLY.
 3. POLES AND ALL OTHER ABOVE GROUND APPURTENANCES WILL BE LOCATED OUTSIDE OF THE HIGHWAY RIGHT-OF-WAY.
 4. NTB ASSOCIATES, INC. ASSUMES NO LIABILITY, WRITTEN OR IMPLIED AS TO THE LOCATION OR DEPTH OF PIPELINES OR UNDERGROUND UTILITY LINES. CONTRACTORS SHALL USE "ONE CALL" SYSTEM PRIOR TO BEGINNING WORK.
 5. LOWEST ELEVATION OF WIRE EXCEEDS NATIONAL ELECTRIC SAFETY CODE MINIMUM CLEARANCE OF 25.2 FT. CONDUCTOR SHOWN AT MAXIMUM SAG.
 6. 2x BUNDLE 1590 KCM AC SR "LAPWING" CONDUCTOR
 7. STATIONING ON PROFILE IS SOUTHLINE CENTERLINE STATIONING.
 8. WIRE ELEVATIONS PROVIDED BY POWER ENGINEERS, VIA PLS-CADD PROGRAM.
- NTB ASSOCIATES, INC. TAKES NO RESPONSIBILITY FOR THE ACCURACY OF THE ELEVATIONS.



[Signature]
Amy Schulze, PE
AZ Reg. No. 78851

Should any discrepancies be discovered please notify us immediately.

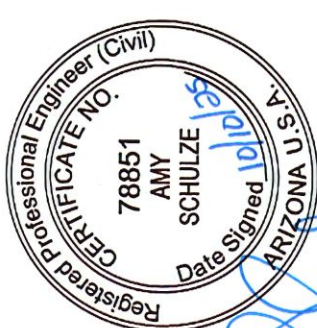
NTBA SURVEY. DESIGN. BUILD. SUCCEED.	SOUTHLINE TRANSMISSION PROPOSED OHE CENTERLINE CROSSING E MOONLIGHT RD	SCALE: 1"=10' DRAWN BY: GWJ CHECKED BY: AKS SURVEYED BY: CM	PROJECT NO.: 24034010 DATE: 09-19-25 DATE: 09-19-25 DATE: 01-16-24	SOUTHLINE TRANSMISSION PROJECT
--	--	--	---	-----------------------------------



- LEGEND**
- ⊕ Proposed Electric Line
 - ⊕ Existing Road
 - Apparent Right-of-Way
 - ⊕ Property Line
 - ⊕ Fence
 - ⊕ Top of Slope
 - ⊕ Overhead Electric Line
 - ⊕ Proposed Power Pole
 - ⊕ Easement

**NAD 83
ARIZONA EAST
ZONE 0201**

- NOTES:**
1. BASIS OF BEARINGS: ARIZONA STATE PLANE COORDINATE SYSTEM, ARIZONA EAST NAD 83, ZONE 0201.
 2. IN ADDITION TO THE SITE-SPECIFIC INFORMATION PROVIDED IN THE DRAWING, GENERAL REQUIREMENTS INCLUDED IN PERMITS AND APPROVAL FROM FEDERAL, STATE AND LOCAL AGENCIES SHALL ALSO APPLY.
 3. POLES AND ALL OTHER ABOVE GROUND APPURTENANCES WILL BE LOCATED OUTSIDE OF THE HIGHWAY RIGHT-OF-WAY.
 4. NTB ASSOCIATES, INC. ASSUMES NO LIABILITY, WRITTEN OR IMPLIED AS TO THE LOCATION OR DEPTH OF PIPELINES OR UNDERGROUND UTILITY LINES. CONTRACTORS SHALL USE "ONE CALL" SYSTEM PRIOR TO BEGINNING WORK.
 5. LOWEST ELEVATION OF WIRE EXCEEDS NATIONAL ELECTRIC SAFETY CODE MINIMUM CLEARANCE OF 25.2 FT. CONDUCTOR SHOWN AT MAXIMUM SAG.
 6. 2x BUNDLE 1590 KCM ACSR "LAPWING" CONDUCTOR
 7. STATIONING ON PROFILE IS SOUTHLINE CENTERLINE STATIONING.
 8. WIRE ELEVATIONS PROVIDED BY POWER ENGINEERS, VIA PLS-CADD PROGRAM.
- NTB ASSOCIATES, INC. TAKES NO RESPONSIBILITY FOR THE ACCURACY OF THE ELEVATIONS.



Amy Schulze, PE
AZ Reg. No. 78851

Should any discrepancies be discovered please notify us immediately.

NTBA
SURVEY, DESIGN, BUILD, SUCCEED.

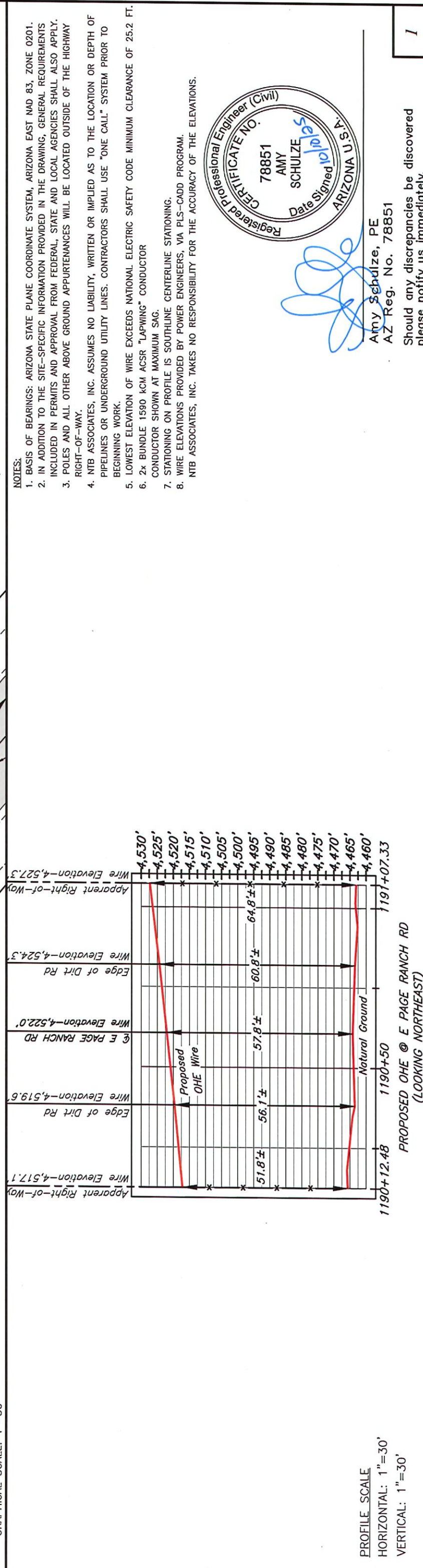
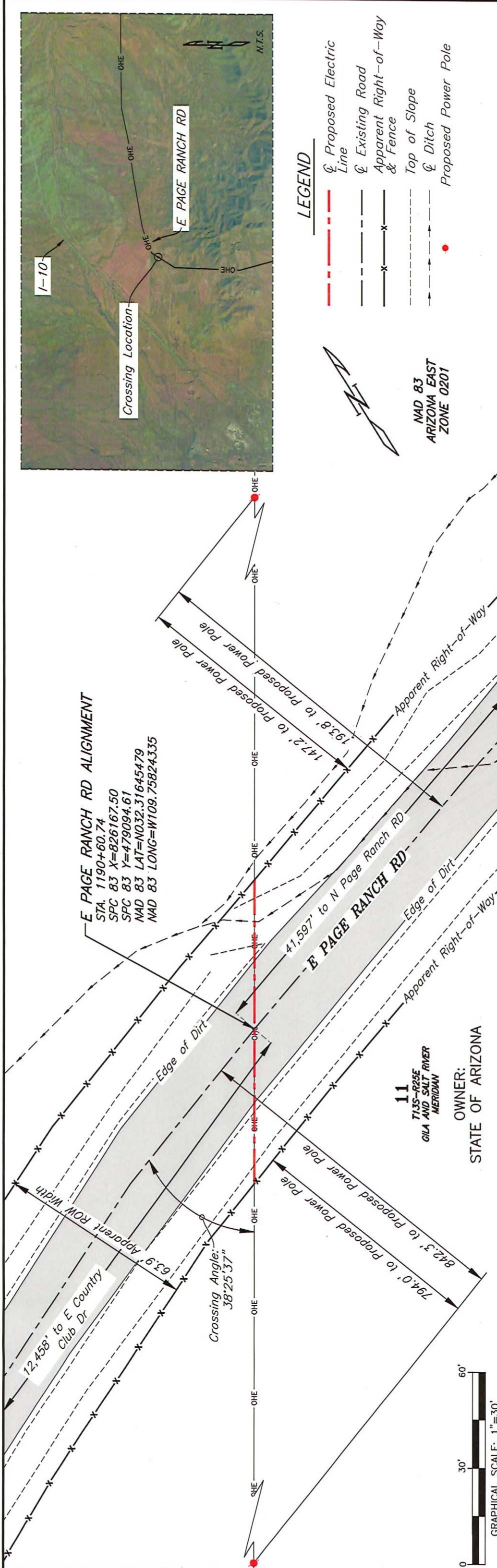
NTB ASSOCIATES, INC.
525 Louisiana Avenue, Shreveport, LA 71101
318.226.8198 | www.ntbainc.com

SOUTHLINE TRANSMISSION
PROPOSED OHE CENTERLINE
CROSSING E SIDEWINDER RD

SCALE: 1"=10'	PROJECT NO.: 24034010	DRAWN BY: LHB	DATE: 10-09-25	CHECKED BY: AKS	DATE: 10-09-25	SURVEYED BY: CM	DATE: 01-17-24
---------------	-----------------------	---------------	----------------	-----------------	----------------	-----------------	----------------

SOUTHLINE TRANSMISSION
PROPOSED OHE CENTERLINE
CROSSING E SIDEWINDER RD

SOUTHLINE
TRANSMISSION PROJECT



PROFILE SCALE
 HORIZONTAL: 1"=30'
 VERTICAL: 1"=30'

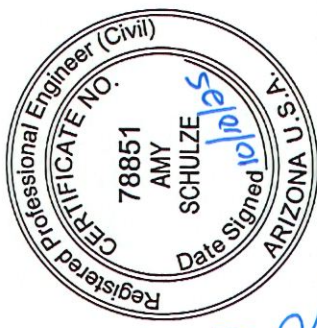
- LEGEND**
- Proposed Electric Line
 - Existing Road
 - Apparent Right-of-Way & Fence
 - Top of Slope
 - Ditch
 - Proposed Power Pole

NAD 83
 ARIZONA EAST
 ZONE 0201

E PAGE RANCH RD ALIGNMENT
 STA. 1190+60.74
 SPC 83 X=826167.50
 SPC 83 Y=479094.61
 NAD 83 LAT=N032.31645479
 NAD 83 LONG=W109.75824335

11
 T13S-R25E
 GILA AND SALT RIVER
 MERIDIAN
 OWNER:
 STATE OF ARIZONA

- NOTES:**
1. BASIS OF BEARINGS: ARIZONA STATE PLANE COORDINATE SYSTEM, ARIZONA EAST NAD 83, ZONE 0201.
 2. IN ADDITION TO THE SITE-SPECIFIC INFORMATION PROVIDED IN THE DRAWING, GENERAL REQUIREMENTS INCLUDED IN PERMITS AND APPROVAL FROM FEDERAL, STATE AND LOCAL AGENCIES SHALL ALSO APPLY.
 3. POLES AND ALL OTHER ABOVE GROUND APPURTENANCES WILL BE LOCATED OUTSIDE OF THE HIGHWAY RIGHT-OF-WAY.
 4. NTB ASSOCIATES, INC. ASSUMES NO LIABILITY, WRITTEN OR IMPLIED AS TO THE LOCATION OR DEPTH OF PIPELINES OR UNDERGROUND UTILITY LINES. CONTRACTORS SHALL USE "ONE CALL" SYSTEM PRIOR TO BEGINNING WORK.
 5. LOWEST ELEVATION OF WIRE EXCEEDS NATIONAL ELECTRIC SAFETY CODE MINIMUM CLEARANCE OF 25.2 FT.
 6. 2x BUNDLE 1590 KCM ACSR "LAPWING" CONDUCTOR CONDUCTOR SHOWN AT MAXIMUM SAG.
 7. STATIONING ON PROFILE IS SOUTHLINE CENTERLINE STATIONING.
 8. WIRE ELEVATIONS PROVIDED BY POWER ENGINEERS, VIA PLS-CADD PROGRAM.
- NTB ASSOCIATES, INC. TAKES NO RESPONSIBILITY FOR THE ACCURACY OF THE ELEVATIONS.



Amy Schulze, PE
 AZ Reg. No. 78851

Should any discrepancies be discovered please notify us immediately.

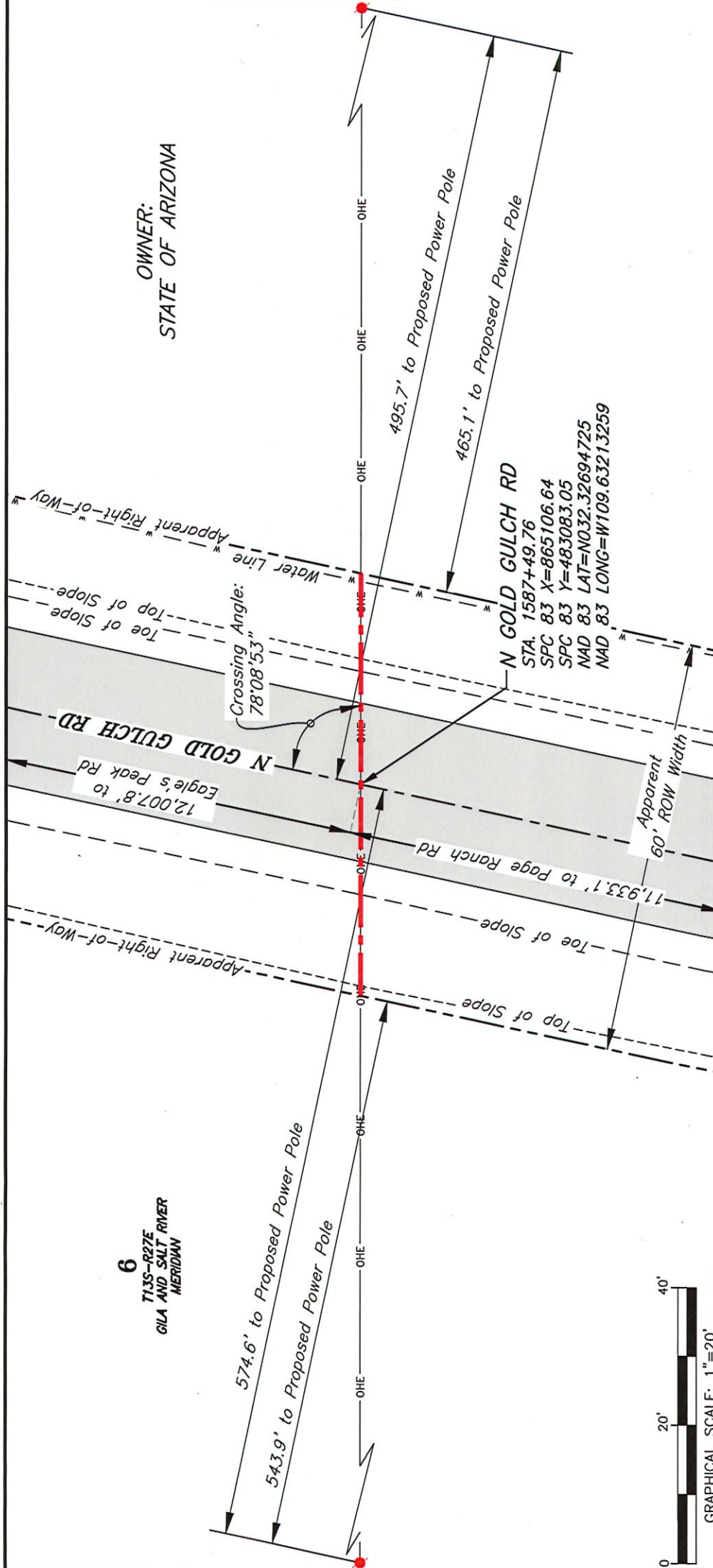
PROJECT NO.: 24034010	
SCALE: 1"=30'	DATE: 09-19-25
DRAWN BY: LHB	DATE: 09-19-25
CHECKED BY: AKS	DATE: 01-17-24
SURVEYED BY: CM	
REV.:	BY: DATE:
DESCRIPTION	
SOUTHLINE TRANSMISSION PROPOSED OHE CENTERLINE CROSSING E PAGE RANCH RD	
NTB ASSOCIATES, INC. 525 Louisiana Avenue, Shreveport, LA 71101 318.226.9199 www.ntbinc.com	
SURVEY. DESIGN. BUILD. SUCCEED.	

SOUTHLINE
 TRANSMISSION PROJECT

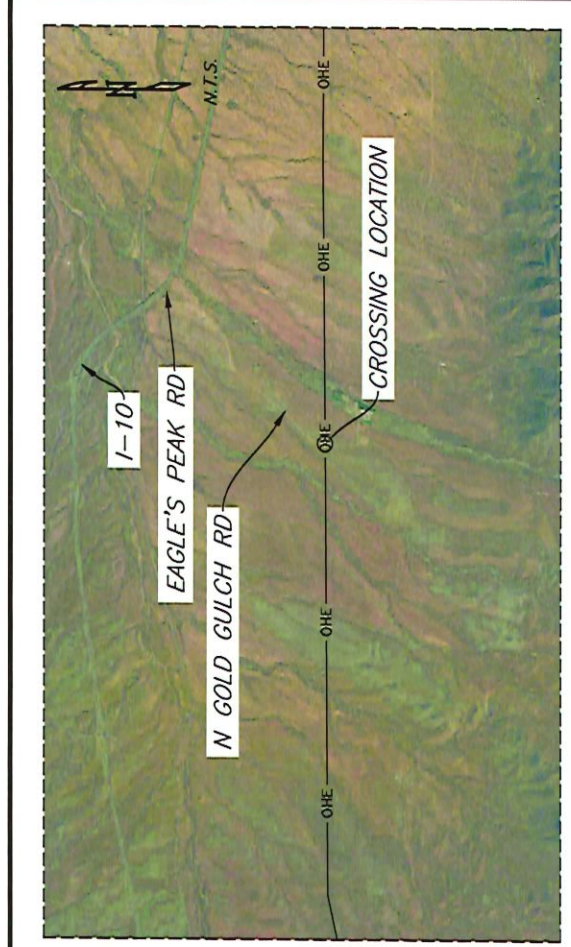
6
T13S-R27E
GILA AND SALT RIVER
MERIDIAN

OWNER:
STATE OF ARIZONA

574.6' to Proposed Power Pole
543.9' to Proposed Power Pole



N GOLD GULCH RD
STA. 1587+49.76
SPC 83 X=865106.64
SPC 83 Y=483083.05
NAD 83 LAT=N032.32694725
NAD 83 LONG=W109.63213259

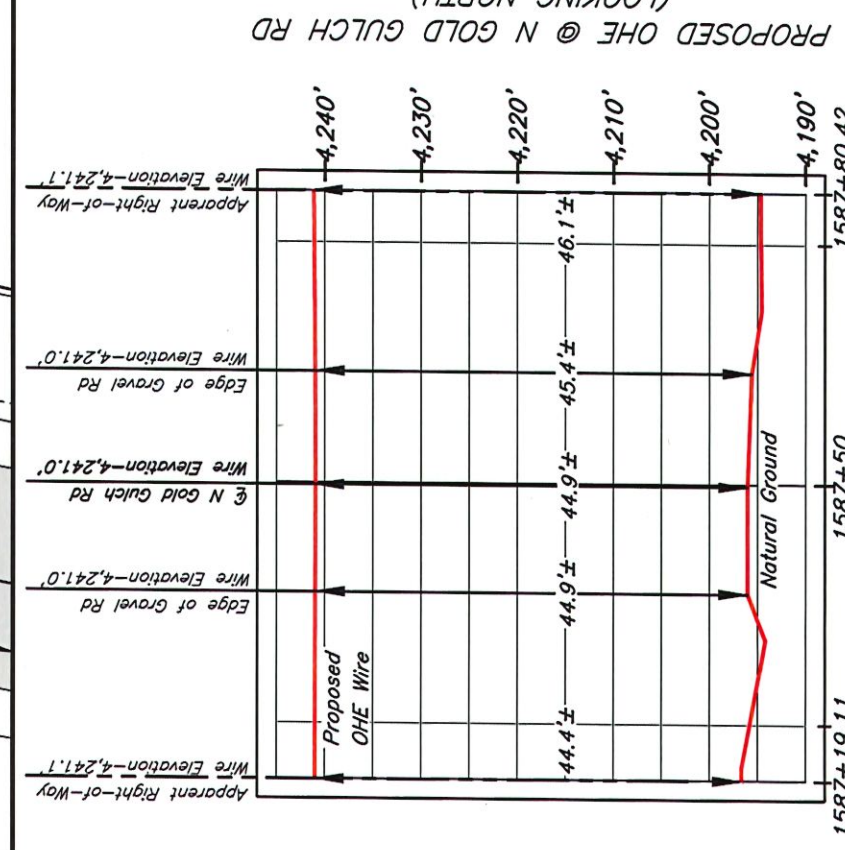


LEGEND

- Proposed Electric Line
- Existing Road
- Apparent Right-of-Way
- Top of Slope
- Toe of Slope
- Water Line
- Proposed Power Pole

NAD 83
ARIZONA EAST
ZONE 0201

GRAPHICAL SCALE: 1"=20'



PROPOSED OHE @ N GOLD GULCH RD
(LOOKING NORTH)

PROFILE SCALE
HORIZONTAL: 1"=20'
VERTICAL: 1"=20'

- NOTES:
1. BASIS OF BEARINGS: ARIZONA STATE PLANE COORDINATE SYSTEM, ARIZONA EAST NAD 83, ZONE 0201.
 2. IN ADDITION TO THE SITE-SPECIFIC INFORMATION PROVIDED IN THE DRAWING, GENERAL REQUIREMENTS INCLUDED IN PERMITS AND APPROVAL FROM FEDERAL, STATE AND LOCAL AGENCIES SHALL ALSO APPLY.
 3. POLES AND ALL OTHER ABOVE GROUND APPURTENANCES WILL BE LOCATED OUTSIDE OF THE HIGHWAY RIGHT-OF-WAY.
 4. NTB ASSOCIATES, INC. ASSUMES NO LIABILITY, WRITTEN OR IMPLIED AS TO THE LOCATION OR DEPTH OF PIPELINES OR UNDERGROUND UTILITY LINES. CONTRACTORS SHALL USE "ONE CALL" SYSTEM PRIOR TO BEGINNING WORK.
 5. LOWEST ELEVATION OF WIRE EXCEEDS NATIONAL ELECTRIC SAFETY CODE MINIMUM CLEARANCE OF 25.2 FT. CONDUCTOR SHOWN AT MAXIMUM SAG.
 6. 2x BUNDLE 1590 KCM ACSSR "LAPWING" CONDUCTOR
 7. STATIONING ON PROFILE IS SOUTHLINE CENTERLINE STATIONING.
 8. WIRE ELEVATIONS PROVIDED BY POWER ENGINEERS, VIA PLS-CADD PROGRAM.
- NTB ASSOCIATES, INC. TAKES NO RESPONSIBILITY FOR THE ACCURACY OF THE ELEVATIONS.



Amy Schulze, PE
AZ Reg. No. 78851

Should any discrepancies be discovered
please notify us immediately.

SOUTHLINE
TRANSMISSION PROJECT

PROJECT NO.: 24034010
DATE: 10-09-25
DATE: 10-09-25
DATE: 01-17-24

SCALE: 1"=20'	DESCRIPTION
DRAWN BY: LHB	
CHECKED BY: AKS	
SURVEYED BY: CM	

REV.:	BY:	DATE:

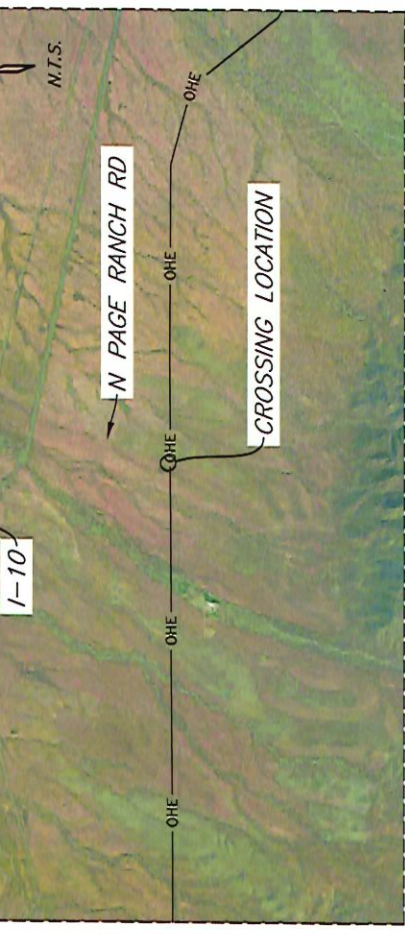
SOUTHLINE TRANSMISSION
PROPOSED OHE CENTERLINE
CROSSING N GOLD GULCH RD

NTB ASSOCIATES, INC.
525 Louisiana Avenue, Shreveport, LA 71101
318.226.9191 | www.ntbainc.com



5
T13S-R27E
GILA AND SALT RIVER
MERIDIAN

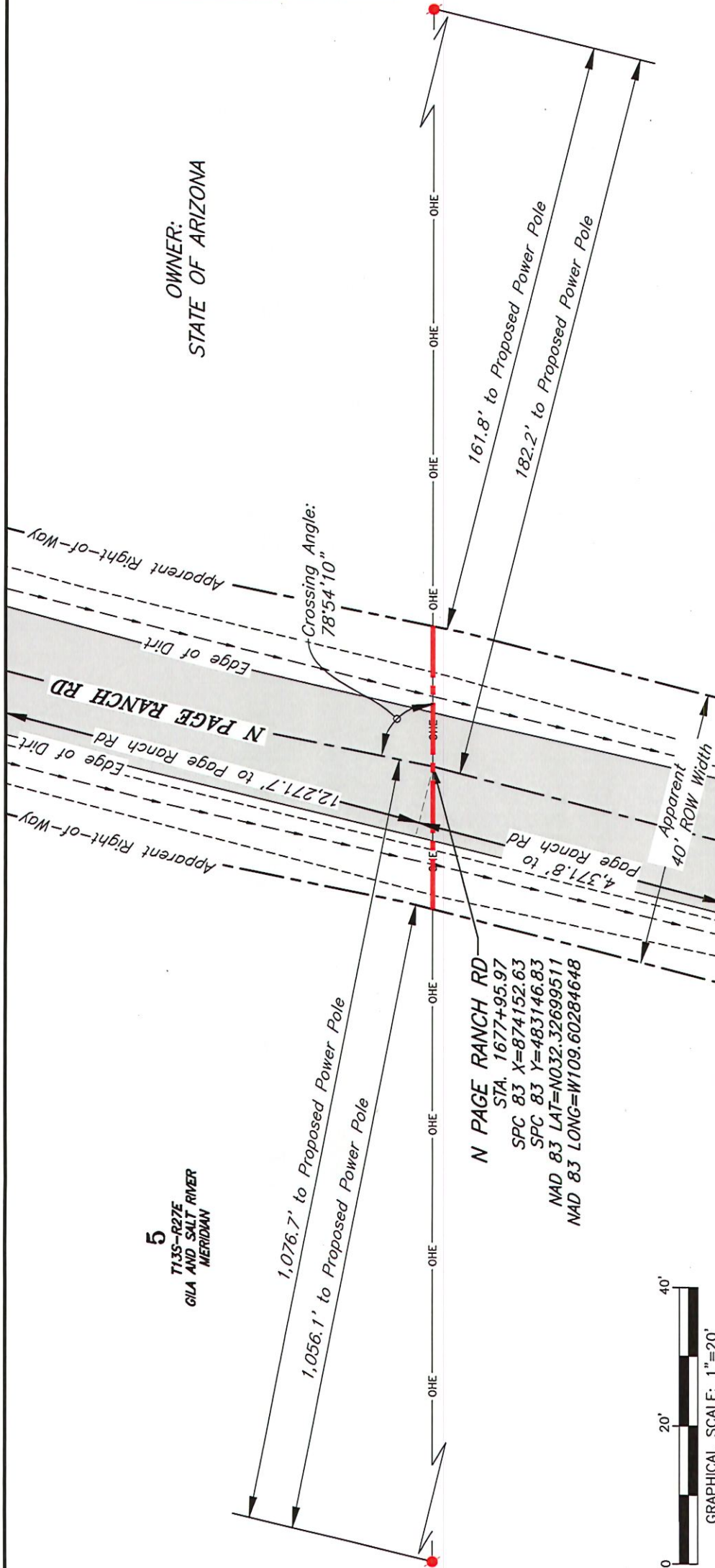
OWNER:
STATE OF ARIZONA



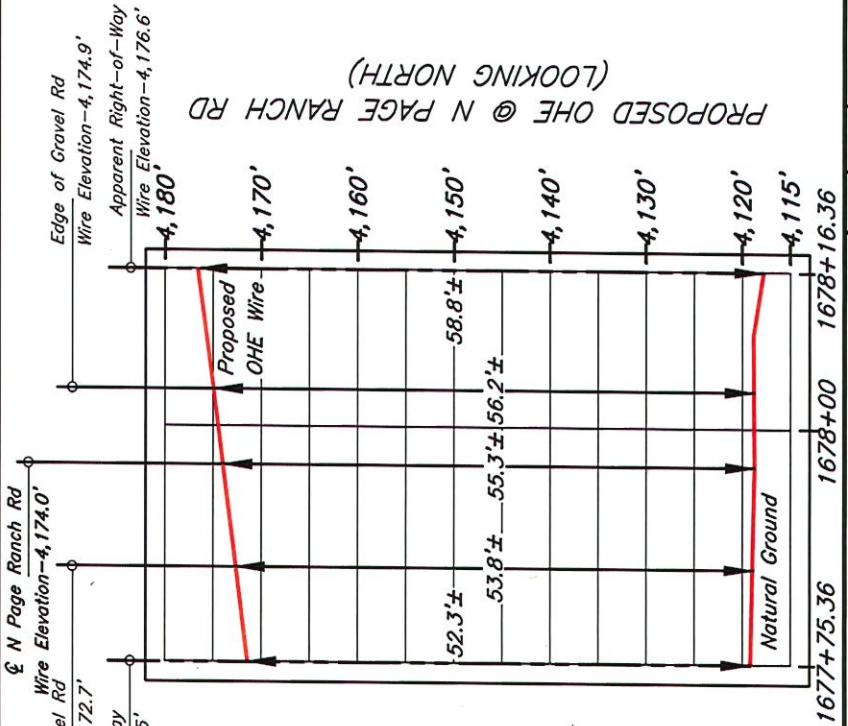
LEGEND

- Proposed Electric Line
- Existing Road
- Apparent Right-of-Way
- Top of Slope
- Ditch
- Proposed Power Pole

NAD 83
ARIZONA EAST
ZONE 0201

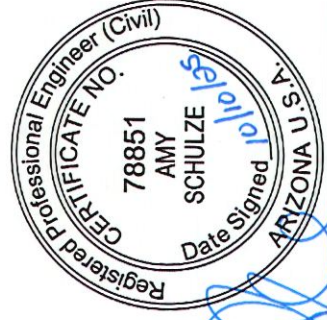


N PAGE RANCH RD
STA. 1677+95.97
SPC 83 X=874152.63
SPC 83 Y=483146.83
NAD 83 LAT=N032.32699511
NAD 83 LONG=W109.60284648



PROFILE SCALE
HORIZONTAL: 1"=20'
VERTICAL: 1"=20'

- NOTES:**
1. BASIS OF BEARINGS: ARIZONA STATE PLANE COORDINATE SYSTEM, ARIZONA EAST NAD 83, ZONE 0201.
 2. IN ADDITION TO THE SITE-SPECIFIC INFORMATION PROVIDED IN THE DRAWING, GENERAL REQUIREMENTS INCLUDED IN PERMITS AND APPROVAL FROM FEDERAL, STATE AND LOCAL AGENCIES SHALL ALSO APPLY.
 3. POLES AND ALL OTHER ABOVE GROUND APPURTENANCES WILL BE LOCATED OUTSIDE OF THE HIGHWAY RIGHT-OF-WAY.
 4. NTB ASSOCIATES, INC. ASSUMES NO LIABILITY, WRITTEN OR IMPLIED AS TO THE LOCATION OR DEPTH OF PIPELINES OR UNDERGROUND UTILITY LINES. CONTRACTORS SHALL USE "ONE CALL" SYSTEM PRIOR TO BEGINNING WORK.
 5. LOWEST ELEVATION OF WIRE EXCEEDS NATIONAL ELECTRIC SAFETY CODE MINIMUM CLEARANCE OF 25.2 FT.
 6. 2x BUNDLE 1590 KCM ACSR "LAPWING" CONDUCTOR CONDUCTOR SHOWN AT MAXIMUM SAG.
 7. STATIONING ON PROFILE IS SOUTHLINE CENTERLINE STATIONING.
 8. WIRE ELEVATIONS PROVIDED BY POWER ENGINEERS, VIA PLS-CADD PROGRAM.
- NTB ASSOCIATES, INC. TAKES NO RESPONSIBILITY FOR THE ACCURACY OF THE ELEVATIONS.



Amy Schulze, PE
AZ Reg. No. 78851

Should any discrepancies be discovered please notify us immediately.

SOUTHLINE
TRANSMISSION PROJECT

PROJECT NO.: 24034010
DATE: 10-09-25
DATE: 10-09-25
DATE: 01-17-24

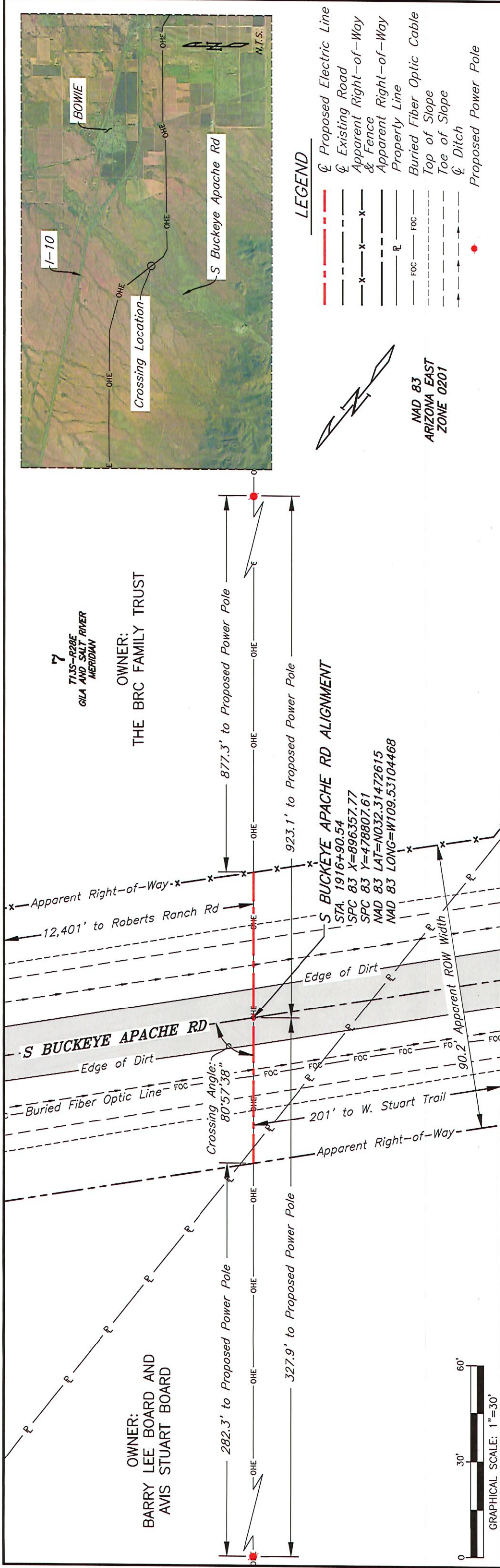
SCALE: 1"=20'
DRAWN BY: LHB
CHECKED BY: AKS
SURVEYED BY: CM

REV.	BY	DATE	DESCRIPTION

SOUTHLINE TRANSMISSION
PROPOSED OHE CENTERLINE
CROSSING N PAGE RANCH RD

NTB ASSOCIATES, INC.
525 Louisiana Avenue, Shreveport, LA 71101
318.226.9191 | www.ntbainc.com





OWNER:
BARRY LEE BOARD AND AVIS STUART BOARD

OWNER:
THE BRC FAMILY TRUST

7
T13S-R28E
GILA AND SALT RIVER
MERIDIAN

LEGEND

- Proposed Electric Line
- Existing Road
- x-x- Apparent Right-of-Way & Fence
- x-x- Apparent Right-of-Way Property Line
- FOC Buried Fiber Optic Cable
- - - Top of Slope
- - - Toe of Slope
- - - Ditch
- Proposed Power Pole

**NAD 83
ARIZONA EAST
ZONE 0201**

NOTES:

1. BASIS OF BEARINGS: ARIZONA STATE PLANE COORDINATE SYSTEM, ARIZONA EAST NAD 83, ZONE 0201.
2. IN ADDITION TO THE SITE-SPECIFIC INFORMATION PROVIDED IN THE DRAWING, GENERAL REQUIREMENTS INCLUDED IN PERMITS AND APPROVAL FROM FEDERAL, STATE AND LOCAL AGENCIES SHALL ALSO APPLY.
3. POLES AND ALL OTHER ABOVE GROUND APPURTENANCES WILL BE LOCATED OUTSIDE OF THE HIGHWAY RIGHT-OF-WAY.
4. NTB ASSOCIATES, INC. ASSUMES NO LIABILITY, WRITTEN OR IMPLIED AS TO THE LOCATION OR DEPTH OF PIPELINES OR UNDERGROUND UTILITY LINES. CONTRACTORS SHALL USE "ONE CALL" SYSTEM PRIOR TO BEGINNING WORK.
5. LOWEST ELEVATION OF WIRE EXCEEDS NATIONAL ELECTRIC SAFETY CODE MINIMUM CLEARANCE OF 25.2 FT. CONDUCTOR SHOWN AT MAXIMUM SAG.
6. 2x BUNDLE 1590 KCM ACSR "LAPWING" CONDUCTOR
7. STATIONING ON PROFILE IS SOUTHLINE CENTERLINE STATIONING.
8. WIRE ELEVATIONS PROVIDED BY POWER ENGINEERS, VIA PLS-CADD PROGRAM.

NTB ASSOCIATES, INC. TAKES NO RESPONSIBILITY FOR THE ACCURACY OF THE ELEVATIONS.

Crossing Location

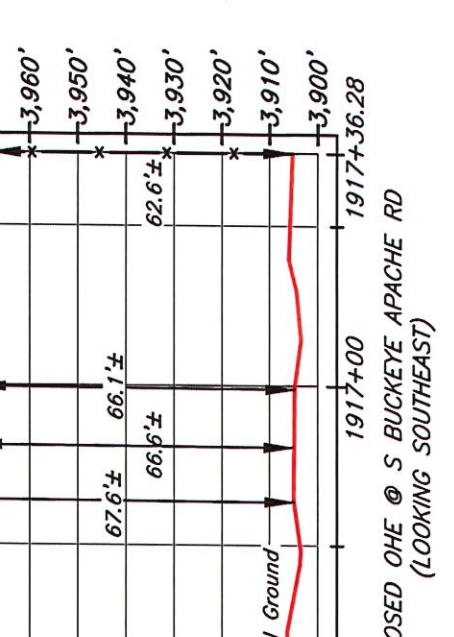
BOWIE

I-10

S Buckeye Apache Rd

OHE

N.T.S.



PROFILE SCALE
HORIZONTAL: 1"=30'
VERTICAL: 1"=20'

GRAPHICAL SCALE: 1"=30'

**PROPOSED OHE @ S BUCKEYE APACHE RD
(LOOKING SOUTHEAST)**

1916+44.97 1917+00 1917+36.28

Edge of Dirt Rd
Wire Elevation-3,972.6'
Edge of Dirt Rd
Wire Elevation-3,971.8'
Edge of Dirt Rd
Wire Elevation-3,970.9'
Edge of Dirt Rd
Wire Elevation-3,970.9'
Edge of Dirt Rd
Wire Elevation-3,960'
Edge of Dirt Rd
Wire Elevation-3,950'
Edge of Dirt Rd
Wire Elevation-3,940'
Edge of Dirt Rd
Wire Elevation-3,930'
Edge of Dirt Rd
Wire Elevation-3,920'
Edge of Dirt Rd
Wire Elevation-3,910'
Edge of Dirt Rd
Wire Elevation-3,900'

70.1'±
66.6'±
66.6'±
62.6'±

Proposed OHE Wire
Natural Ground

NTBA
SURVEY. DESIGN. BUILD. SUCCEED.

NTB ASSOCIATES, INC.
525 Louisiana Avenue, Shreveport, LA 71101
318.226.9193 | www.ntbainc.com

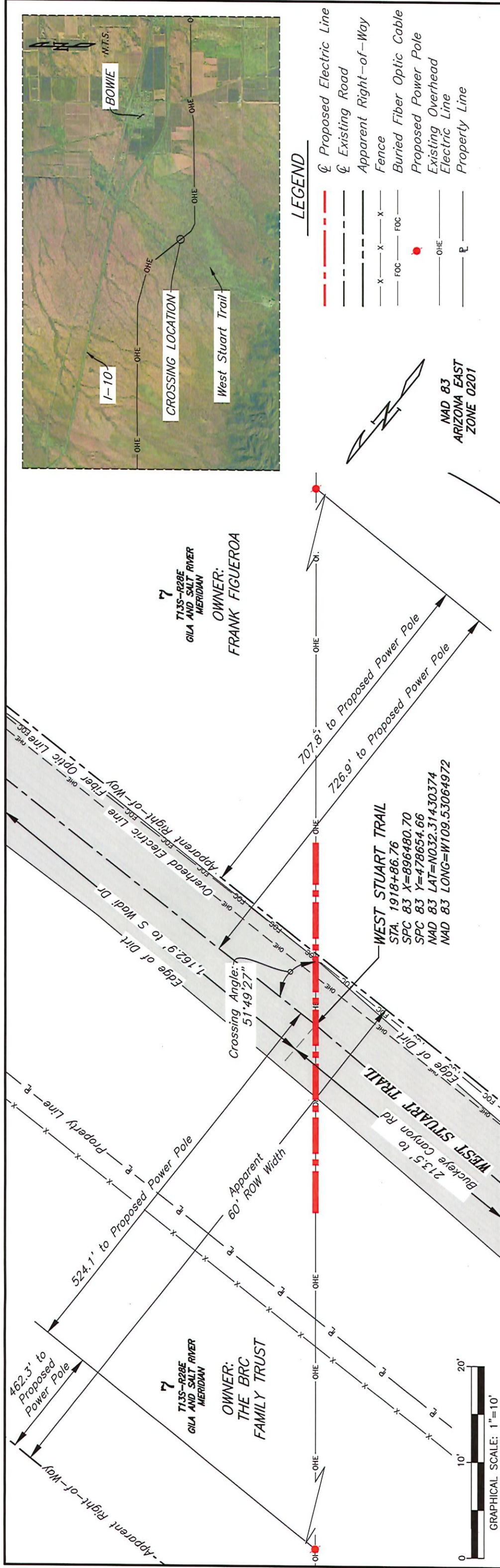
**SOUTHLINE TRANSMISSION
PROPOSED OHE CENTERLINE
CROSSING S BUCKEYE APACHE RD**

REV.	BY	DATE	DESCRIPTION

SCALE: 1"=30'
DRAWN BY: LHB
CHECKED BY: AKS
SURVEYED BY: CM

PROJECT NO.: 24034010
DATE: 09-19-25
DATE: 09-19-25
DATE: 01-18-24

SOUTHLINE TRANSMISSION PROJECT



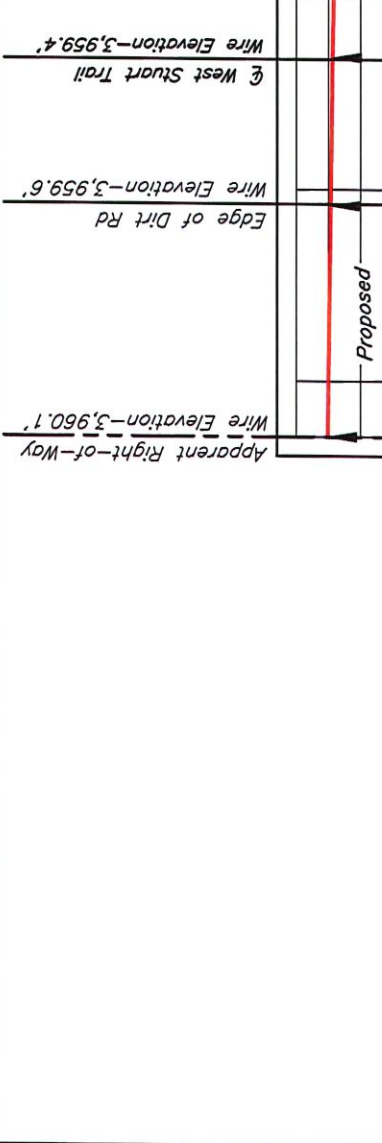
LEGEND

- Proposed Electric Line
- Existing Electric Line
- Apparent Right-of-Way
- Fence
- Buried Fiber Optic Cable
- Proposed Power Pole
- Existing Overhead Electric Line
- Property Line

NOTES:

1. BASIS OF BEARINGS: ARIZONA STATE PLANE COORDINATE SYSTEM, ARIZONA EAST NAD 83, ZONE 0201.
2. IN ADDITION TO THE SITE-SPECIFIC INFORMATION PROVIDED IN THE DRAWING, GENERAL REQUIREMENTS INCLUDED IN PERMITS AND APPROVAL FROM FEDERAL, STATE AND LOCAL AGENCIES SHALL ALSO APPLY.
3. POLES AND ALL OTHER ABOVE GROUND APPURTENANCES WILL BE LOCATED OUTSIDE OF THE HIGHWAY RIGHT-OF-WAY.
4. NTB ASSOCIATES, INC. ASSUMES NO LIABILITY, WRITTEN OR IMPLIED AS TO THE LOCATION OR DEPTH OF PIPELINES OR UNDERGROUND UTILITY LINES. CONTRACTORS SHALL USE "ONE CALL" SYSTEM PRIOR TO BEGINNING WORK.
5. LOWEST ELEVATION OF WIRE EXCEEDS NATIONAL ELECTRIC SAFETY CODE MINIMUM CLEARANCE OF 25.2 FT.
6. 2x BUNDLE 1590 KCM ACSS "LAPWING" CONDUCTOR CONDUCTOR SHOWN AT MAXIMUM SAG.
7. STATIONING ON PROFILE IS SOUTHLINE CENTERLINE STATIONING.
8. WIRE ELEVATIONS PROVIDED BY POWER ENGINEERS, VIA PLS-CADD PROGRAM.

WEST STUART TRAIL
 STA. 1918+86.76
 SPC 83 X=896480.70
 SPC 83 Y=478654.66
 NAD 83 LAT=NO32.31430374
 NAD 83 LONG=W109.53064972



PROFILE SCALE
 HORIZONTAL: 1"=10'
 VERTICAL: 1"=10'

NTBA ASSOCIATES, INC.
 525 Louisiana Avenue, Shreveport, LA 71101
 318.226.5199 | www.ntbainc.com

SOUTHLINE TRANSMISSION
 PROPOSED OHE CENTERLINE
 CROSSING WEST STUART TRAIL

NTBA
 SURVEY. DESIGN. BUILD. SUCCEED.

Professional Engineer (Civil)
 78851
 AMY
 SCHULZE
 Date Signed 10/10/25
 ARIZONA U.S.A.

Amy Schulze, PE
 AZ Reg. No. 78851

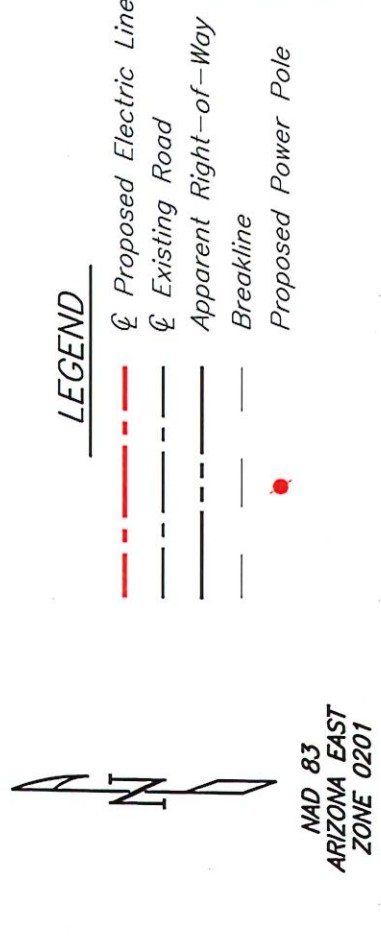
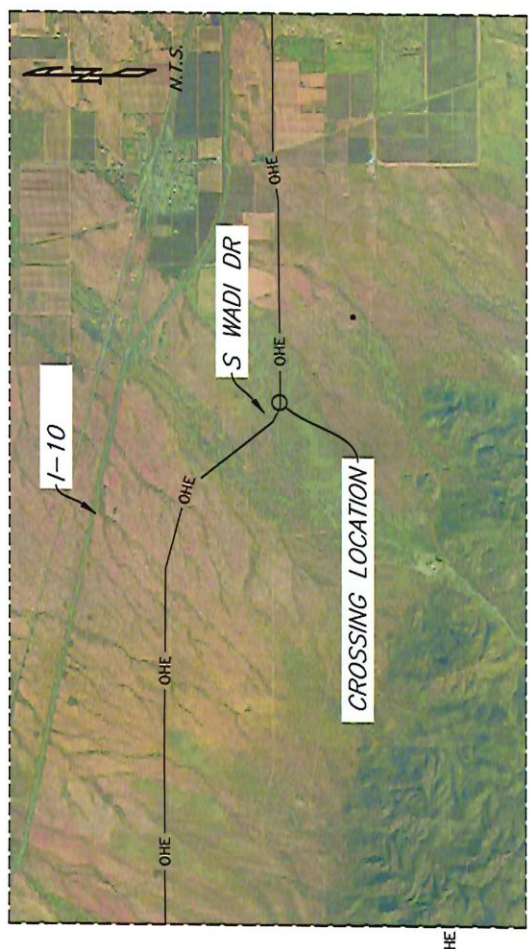
Should any discrepancies be discovered please notify us immediately.

REV.	BY:	DATE:	DESCRIPTION

PROJECT NO.: 24034010
DATE: 10-09-25
CHECKED BY: AKS
SURVEYED BY: CM

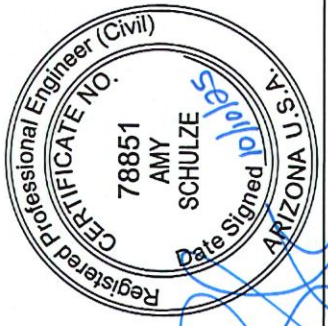
SCALE: 1"=10'
DRAWN BY: LHB
CHECKED BY: AKS
SURVEYED BY: CM

PROJECT NO.: 24034010
DATE: 10-09-25
CHECKED BY: AKS
SURVEYED BY: CM



NAD 83
ARIZONA EAST
ZONE 0201

- NOTES:**
1. BASIS OF BEARINGS: ARIZONA STATE PLANE COORDINATE SYSTEM, ARIZONA EAST NAD 83, ZONE 0201.
 2. IN ADDITION TO THE SITE-SPECIFIC INFORMATION PROVIDED IN THE DRAWING, GENERAL REQUIREMENTS INCLUDED IN PERMITS AND APPROVAL FROM FEDERAL, STATE AND LOCAL AGENCIES SHALL ALSO APPLY.
 3. POLES AND ALL OTHER ABOVE GROUND APPURTENANCES WILL BE LOCATED OUTSIDE OF THE HIGHWAY RIGHT-OF-WAY.
 4. NTB ASSOCIATES, INC. ASSUMES NO LIABILITY, WRITTEN OR IMPLIED AS TO THE LOCATION OR DEPTH OF PIPELINES OR UNDERGROUND UTILITY LINES. CONTRACTORS SHALL USE "ONE CALL" SYSTEM PRIOR TO BEGINNING WORK.
 5. LOWEST ELEVATION OF WIRE EXCEEDS NATIONAL ELECTRIC SAFETY CODE MINIMUM CLEARANCE OF 25.2 FT. CONDUCTOR SHOWN AT MAXIMUM SAG.
 6. 2x BUNDLE 1590 KCM ACSR "LAPWING" CONDUCTOR
 7. STATIONING ON PROFILE IS SOUTHLINE CENTERLINE STATIONING.
 8. WIRE ELEVATIONS PROVIDED BY POWER ENGINEERS, VIA PLS-CADD PROGRAM.
- NTB ASSOCIATES, INC. TAKES NO RESPONSIBILITY FOR THE ACCURACY OF THE ELEVATIONS.



Amy Schulze, PE
AZ Reg. No. 78851

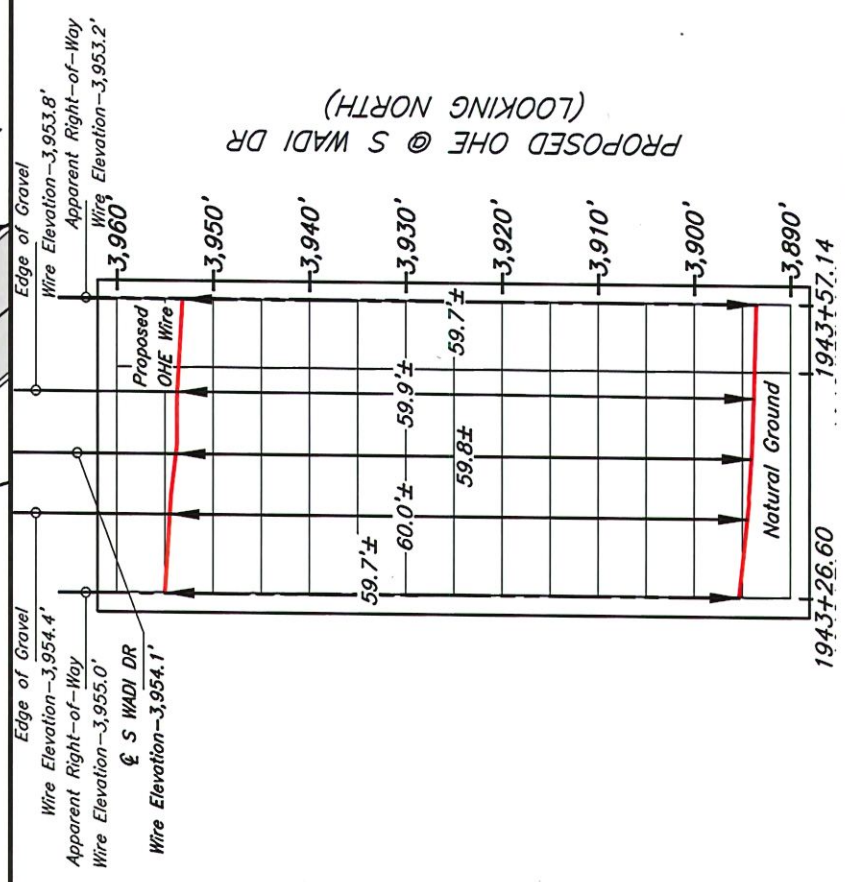
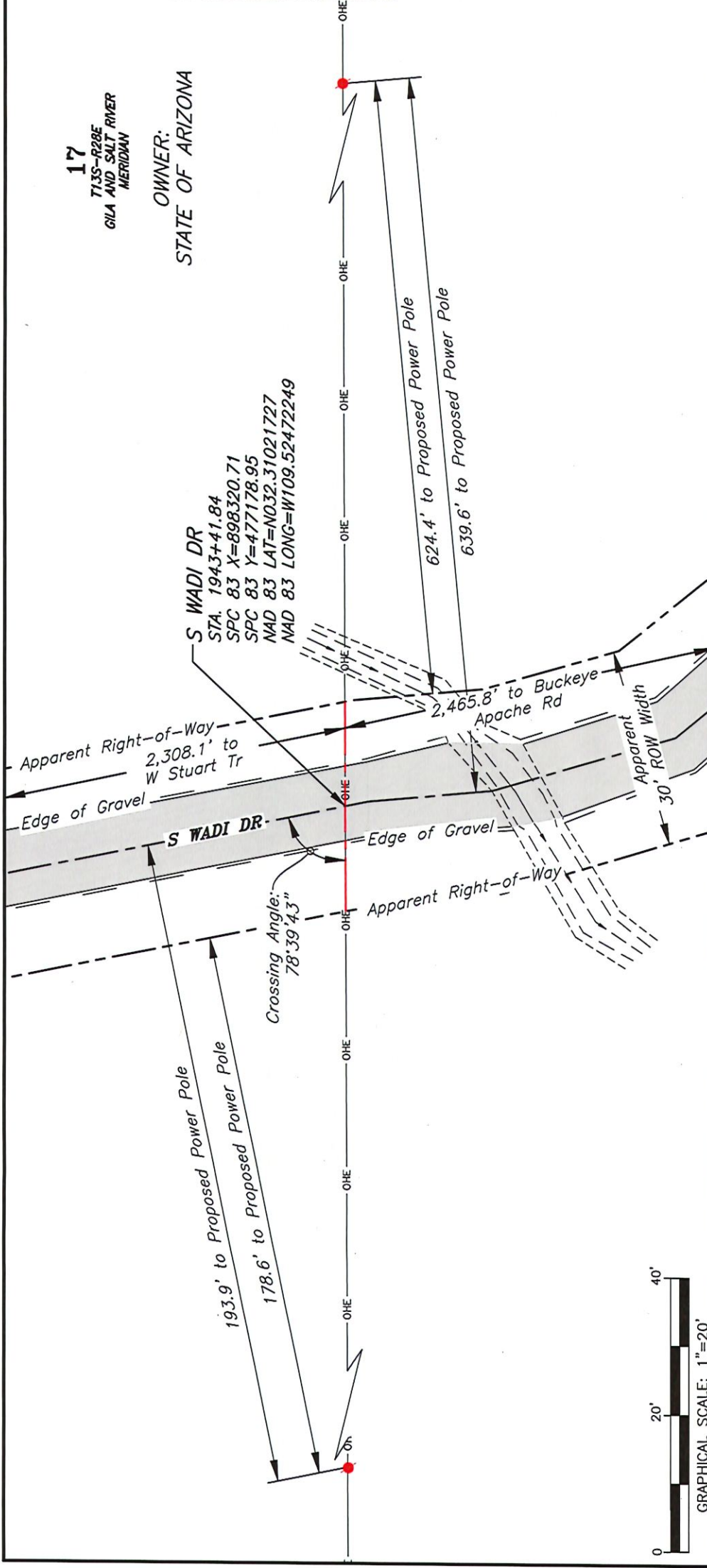
Should any discrepancies be discovered please notify us immediately.

SOUTHLINE
TRANSMISSION PROJECT

17
T135-R28E
GILA AND SALT RIVER
MERIDIAN

OWNER:
STATE OF ARIZONA

S WADI DR
STA 1943+41.84
SPC 83 X=898320.71
SPC 83 Y=477178.95
NAD 83 LAT=N032.31021727
NAD 83 LONG=W109.52472249



PROFILE SCALE
HORIZONTAL: 1"=20'
VERTICAL: 1"=20'

SCALE: 1"=20'	PROJECT NO.: 24034010
DRAWN BY: GWU	DATE: 10-10-25
CHECKED BY: AKS	DATE: 10-10-25
SURVEYED BY: CM	DATE: 01-17-24

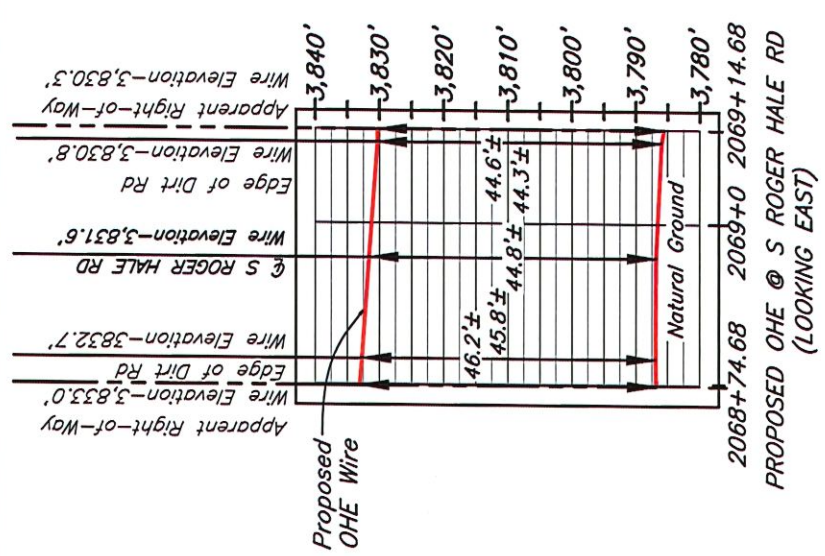
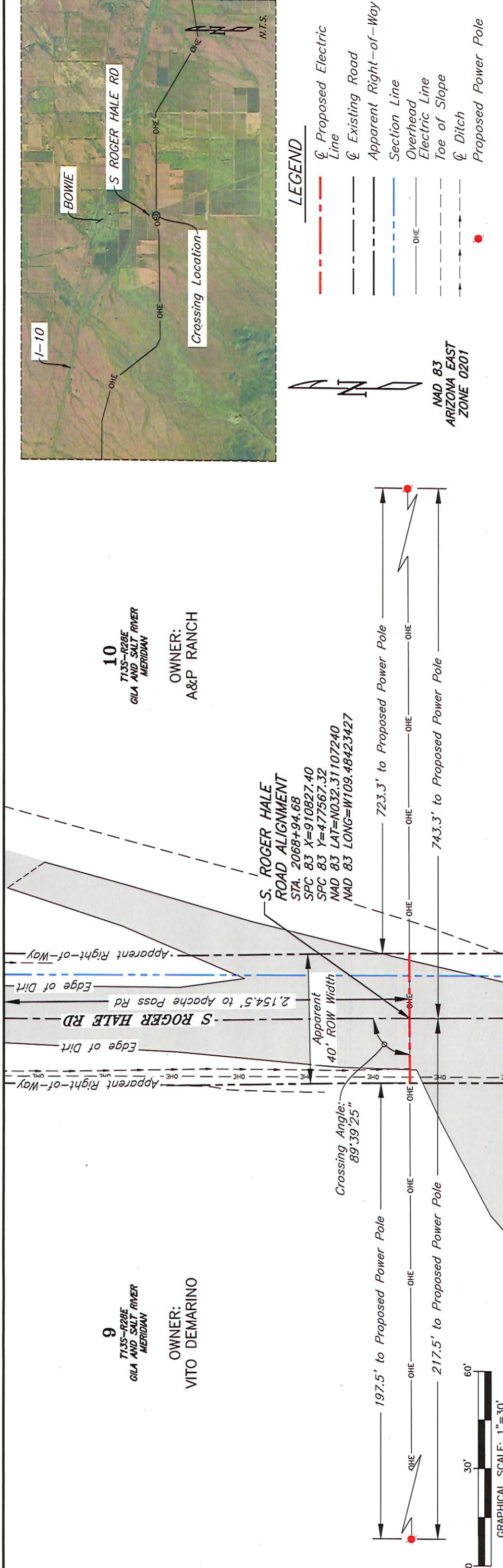
SOUTHLINE TRANSMISSION
PROPOSED OHE CENTERLINE
CROSSING S WADI DR

NTB ASSOCIATES, INC.
525 Louisiana Avenue, Shreveport, LA 71101
318.226.9198 | www.ntbainc.com



9
T135-R28E
GILA AND SALT RIVER
MERIDIAN
OWNER:
VITO DEMARINO

10
T135-R28E
GILA AND SALT RIVER
MERIDIAN
OWNER:
A&P RANCH

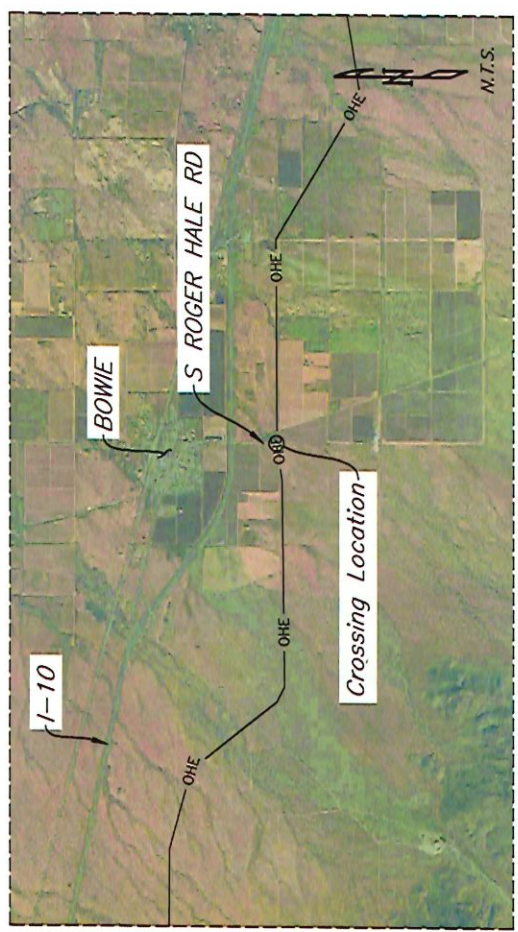


PROFILE SCALE
HORIZONTAL: 1"=30'
VERTICAL: 1"=30'



LEGEND

- Proposed Electric Line
- Existing Road
- Apparent Right-of-Way
- Section Line
- Overhead Electric Line
- Toe of Slope
- Ditch
- Proposed Power Pole



- NOTES:**
1. BASIS OF BEARINGS: ARIZONA STATE PLANE COORDINATE SYSTEM, ARIZONA EAST NAD 83, ZONE 0201.
 2. IN ADDITION TO THE SITE-SPECIFIC INFORMATION PROVIDED IN THE DRAWING, GENERAL REQUIREMENTS INCLUDED IN PERMITS AND APPROVAL FROM FEDERAL, STATE AND LOCAL AGENCIES SHALL ALSO APPLY.
 3. POLES AND ALL OTHER ABOVE GROUND APPURTENANCES WILL BE LOCATED OUTSIDE OF THE HIGHWAY RIGHT-OF-WAY.
 4. NTB ASSOCIATES, INC. ASSUMES NO LIABILITY, WRITTEN OR IMPLIED AS TO THE LOCATION OR DEPTH OF PIPELINES OR UNDERGROUND UTILITY LINES. CONTRACTORS SHALL USE "ONE CALL" SYSTEM PRIOR TO BEGINNING WORK.
 5. LOWEST ELEVATION OF WIRE EXCEEDS NATIONAL ELECTRIC SAFETY CODE MINIMUM CLEARANCE OF 25.2 FT. CONDUCTOR SHOWN AT MAXIMUM SAG.
 6. 2x BUNDLE 1590 KCM ACSSR "LAPWING" CONDUCTOR
 7. STATIONING ON PROFILE IS SOUTHLINE CENTERLINE STATIONING.
 8. WIRE ELEVATIONS PROVIDED BY POWER ENGINEERS, VIA PLS-CADD PROGRAM.
- NTB ASSOCIATES, INC. TAKES NO RESPONSIBILITY FOR THE ACCURACY OF THE ELEVATIONS.



Amy Schulze, PE
AZ Reg. No. 78851

Should any discrepancies be discovered please notify us immediately.

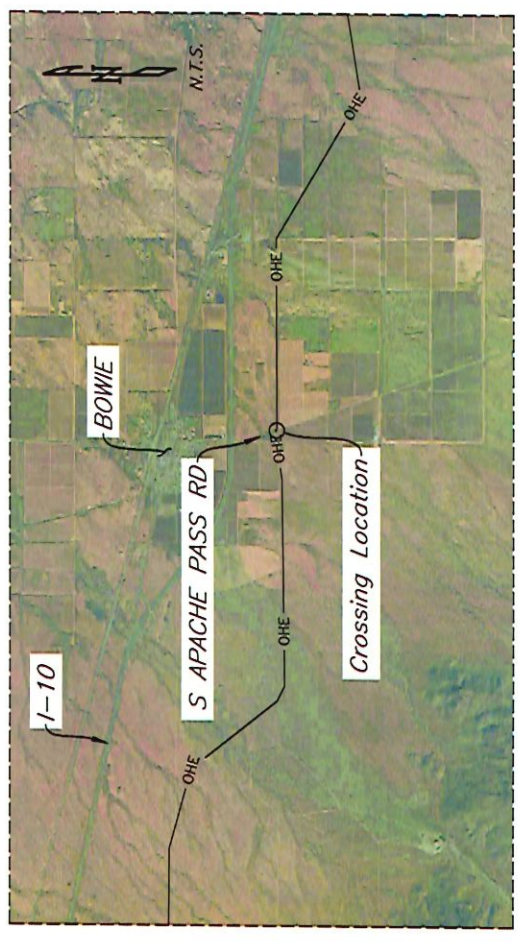
NTB ASSOCIATES, INC.
525 Louisiana Avenue, Shreveport, LA 71101
318.226.9199 | www.ntbainc.com

SOUTHLINE TRANSMISSION
PROPOSED OHE CENTERLINE
CROSSING S ROGER HALE RD

REV.	BY:	DATE:	DESCRIPTION

SCALE: 1"=30'
DRAWN BY: LHB
CHECKED BY: AKS
SURVEYED BY: CM

PROJECT NO.: 24034010
DATE: 09-19-25
DATE: 09-19-25
DATE: 01-19-24

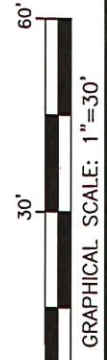
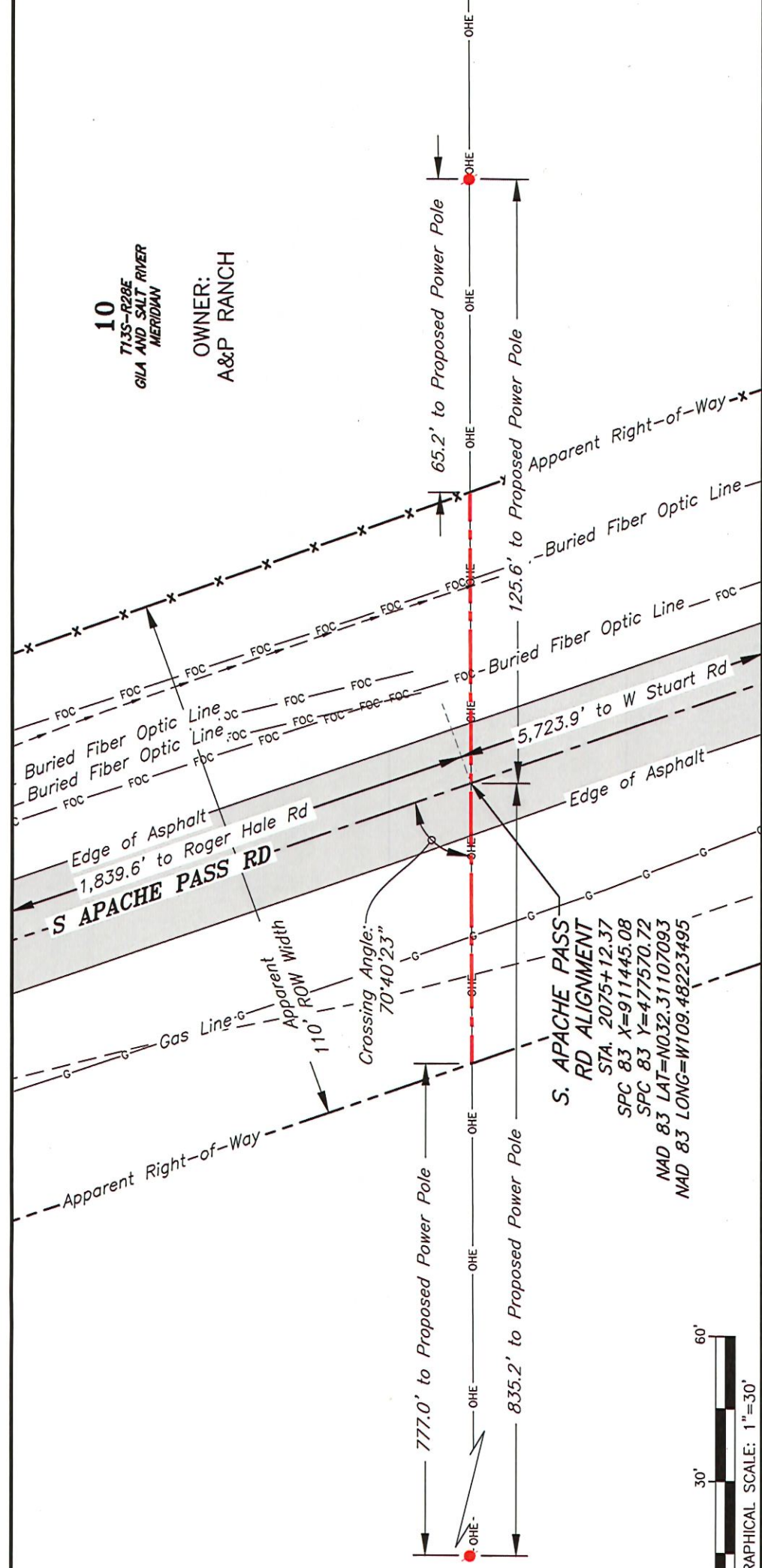


LEGEND

- Proposed Electric Line
- Existing Road
- - - Apparent Right-of-Way
- x - x Apparent Right-of-Way & Fence
- 0 - 0 Gas Line
- 0 - 0 FOC Buried Fiber Optic Cable
- - - Toe of Slope
- - - Ditch
- Proposed Power Pole

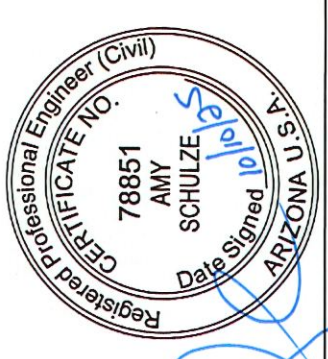
NAD 83
ARIZONA EAST
ZONE 0201

10
7135-R28E
GILA AND SALT RIVER
MERIDIAN
OWNER:
A&P RANCH



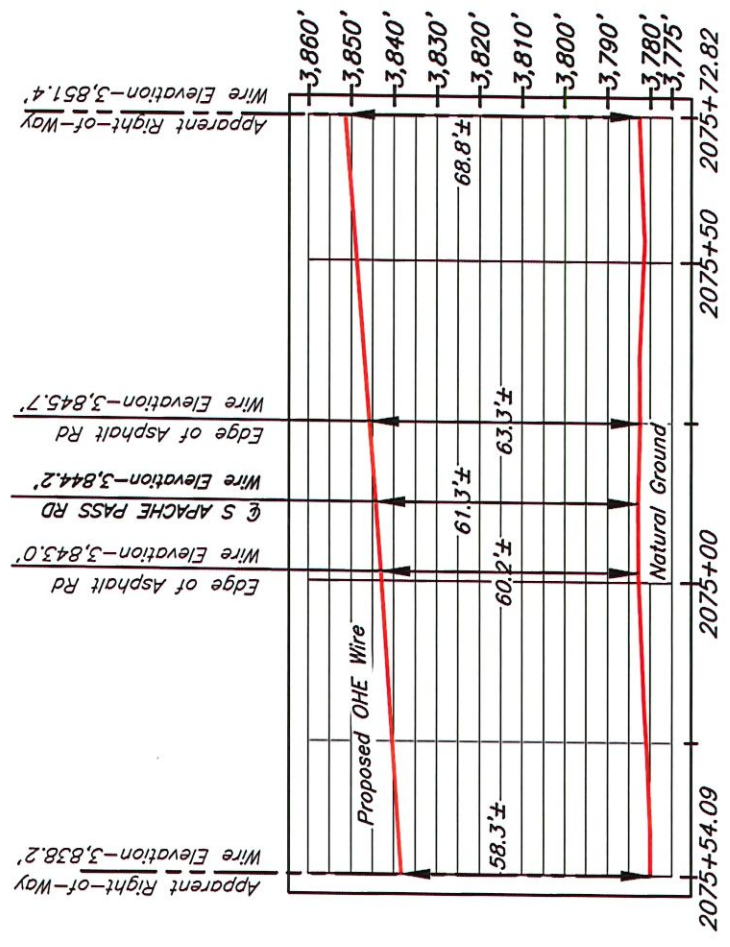
NOTES:

1. BASIS OF BEARINGS: ARIZONA STATE PLANE COORDINATE SYSTEM, ARIZONA EAST NAD 83, ZONE 0201.
2. IN ADDITION TO THE SITE-SPECIFIC INFORMATION PROVIDED IN THE DRAWING, GENERAL REQUIREMENTS INCLUDED IN PERMITS AND APPROVAL FROM FEDERAL, STATE AND LOCAL AGENCIES SHALL ALSO APPLY.
3. POLES AND ALL OTHER ABOVE GROUND APPURTENANCES WILL BE LOCATED OUTSIDE OF THE HIGHWAY RIGHT-OF-WAY.
4. NTB ASSOCIATES, INC. ASSUMES NO LIABILITY, WRITTEN OR IMPLIED AS TO THE LOCATION OR DEPTH OF PIPELINES OR UNDERGROUND UTILITY LINES. CONTRACTORS SHALL USE "ONE CALL" SYSTEM PRIOR TO BEGINNING WORK.
5. LOWEST ELEVATION OF WIRE EXCEEDS NATIONAL ELECTRIC SAFETY CODE MINIMUM CLEARANCE OF 25.2 FT. CONDUCTOR SHOWN AT MAXIMUM SAG.
6. 2x BUNDLE 1590 KCM ACSR "LAPWING" CONDUCTOR
7. STATIONING ON PROFILE IS SOUTHLINE CENTERLINE STATIONING.
8. WIRE ELEVATIONS PROVIDED BY POWER ENGINEERS, VIA PLS-CADD PROGRAM.



Amy Schulze, PE
AZ Reg. No. 78851

Should any discrepancies be discovered please notify us immediately.



PROFILE SCALE
HORIZONTAL: 1"=30'
VERTICAL: 1"=45'

SOUTHLINE TRANSMISSION PROJECT

PROJECT NO.: 24034010
DATE: 09-19-25
DATE: 09-19-25
DATE: 01-18-24

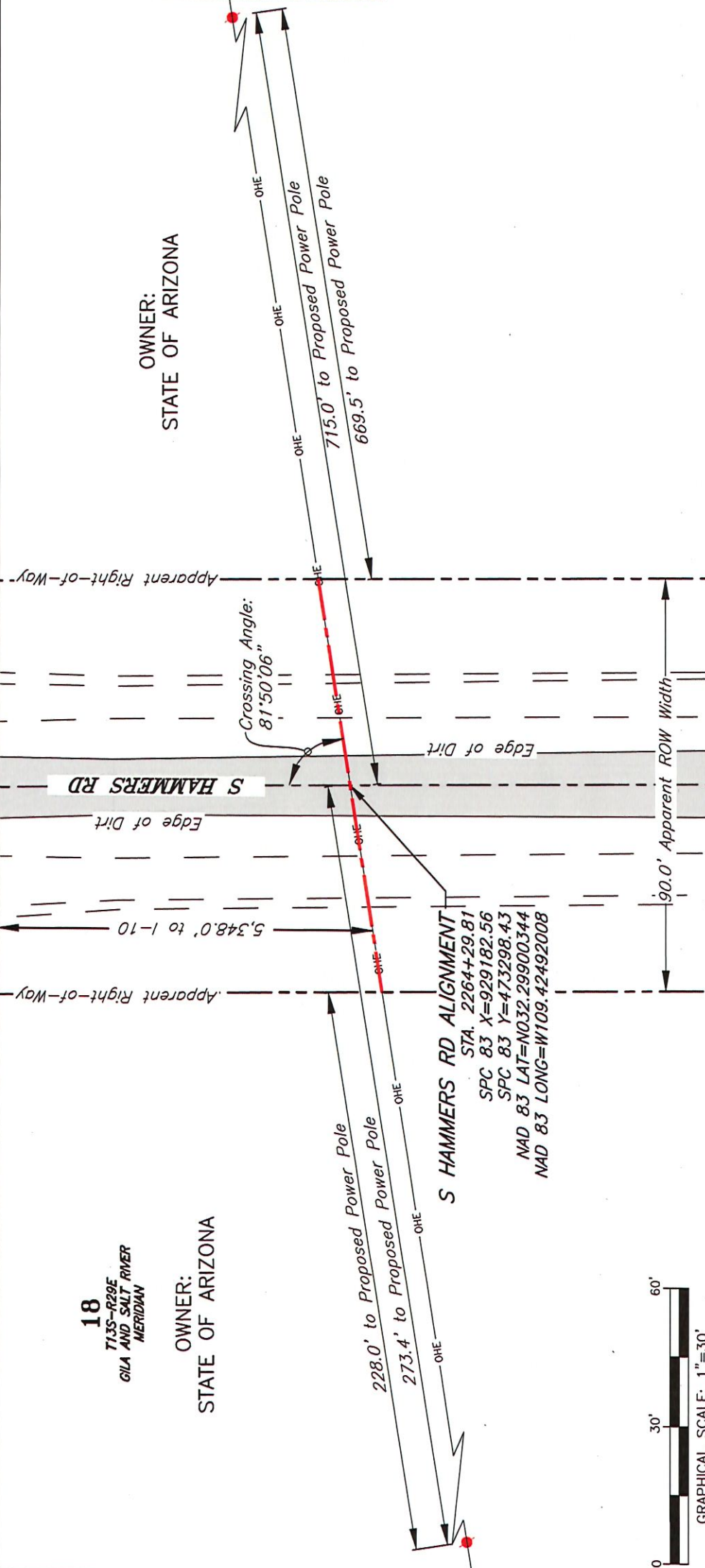
SCALE: 1"=30'	DESCRIPTION
DRAWN BY: LHB	
CHECKED BY: AKS	
SURVEYED BY: CM	

SOUTHLINE TRANSMISSION
PROPOSED OHE CENTERLINE
CROSSING S APACHE PASS RD

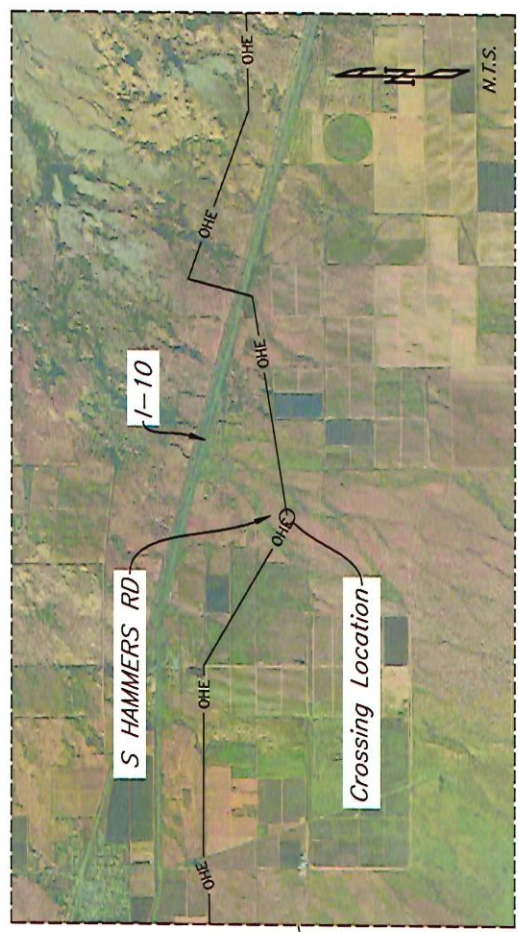
NTBA ASSOCIATES, INC.
525 Louisiana Avenue, Shreveport, LA 71101
318.226.9193 | www.ntba-inc.com

18
T13S-R29E
GILA AND SALT RIVER
MERIDIAN

OWNER:
STATE OF ARIZONA



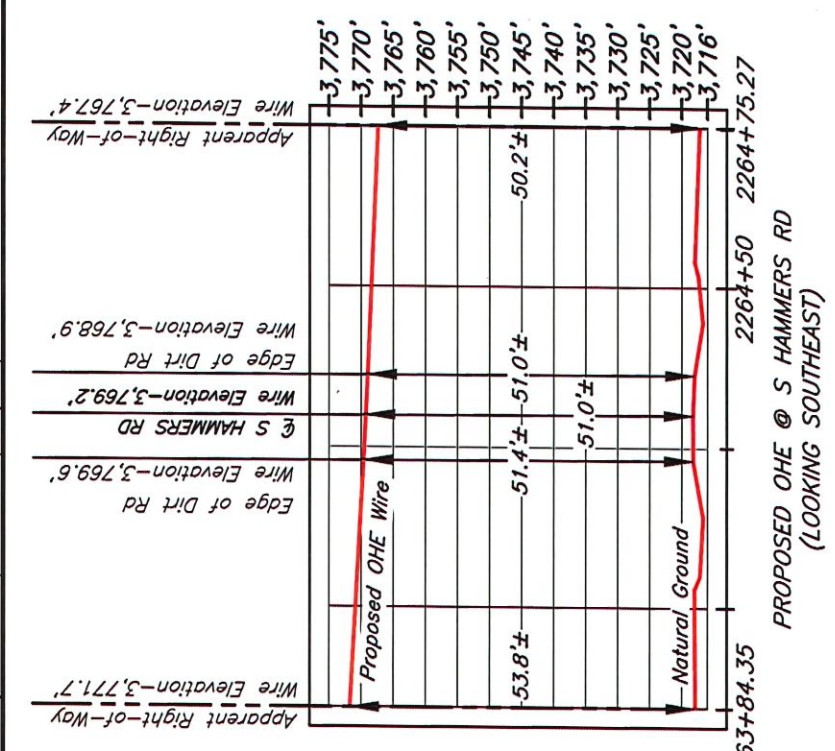
S HAMMERS RD ALIGNMENT
STA. 2264+29.81
SPC 83 X=929182.56
SPC 83 Y=473298.43
NAD 83 LAT=N032.29900344
NAD 83 LONG=W109.42492008



LEGEND

- Proposed Electric Line
- Existing Road
- Apparent Right-of-Way
- Breakline of Grade
- Proposed Power Pole

NAD 83
ARIZONA EAST
ZONE 0201



PROFILE SCALE
HORIZONTAL: 1"=30'
VERTICAL: 1"=20'

- NOTES:**
1. BASIS OF BEARINGS: ARIZONA STATE PLANE COORDINATE SYSTEM, ARIZONA EAST NAD 83, ZONE 0201.
 2. IN ADDITION TO THE SITE-SPECIFIC INFORMATION PROVIDED IN THE DRAWING, GENERAL REQUIREMENTS INCLUDED IN PERMITS AND APPROVAL FROM FEDERAL, STATE AND LOCAL AGENCIES SHALL ALSO APPLY.
 3. POLES AND ALL OTHER ABOVE GROUND APPURTENANCES WILL BE LOCATED OUTSIDE OF THE HIGHWAY RIGHT-OF-WAY.
 4. NTB ASSOCIATES, INC. ASSUMES NO LIABILITY, WRITTEN OR IMPLIED AS TO THE LOCATION OR DEPTH OF PIPELINES OR UNDERGROUND UTILITY LINES. CONTRACTORS SHALL USE "ONE CALL" SYSTEM PRIOR TO BEGINNING WORK.
 5. LOWEST ELEVATION OF WIRE EXCEEDS NATIONAL ELECTRIC SAFETY CODE MINIMUM CLEARANCE OF 25.2 FT. CONDUCTOR SHOWN AT MAXIMUM SAG.
 6. 2x BUNDLE 1590 KCM ACSR "LAPWING" CONDUCTOR
 7. STATIONING ON PROFILE IS SOUTHLINE CENTERLINE STATIONING.
 8. WIRE ELEVATIONS PROVIDED BY POWER ENGINEERS, VIA PLS-CADD PROGRAM.



Amy Schulze, PE
AZ Reg. No. 78851

Should any discrepancies be discovered please notify us immediately.

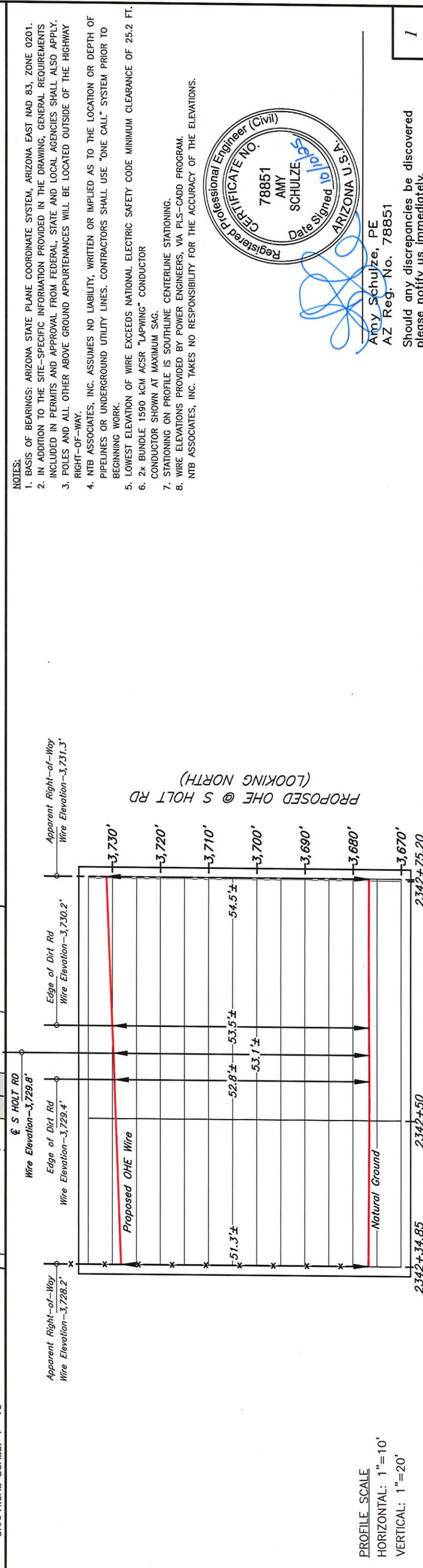
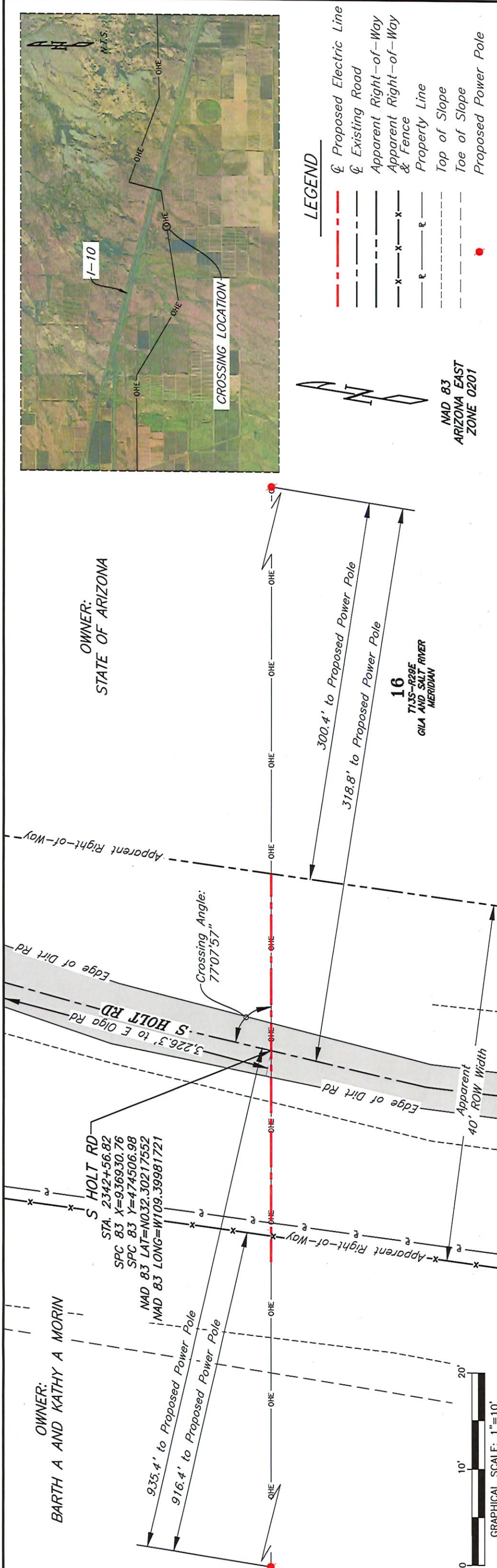
SCALE: 1"=30'	PROJECT NO.: 24034010
DRAWN BY: GWJ	DATE: 09-19-25
CHECKED BY: AKS	DATE: 09-19-25
SURVEYED BY: CM	DATE: 01-18-24

REV.	BY	DATE	DESCRIPTION

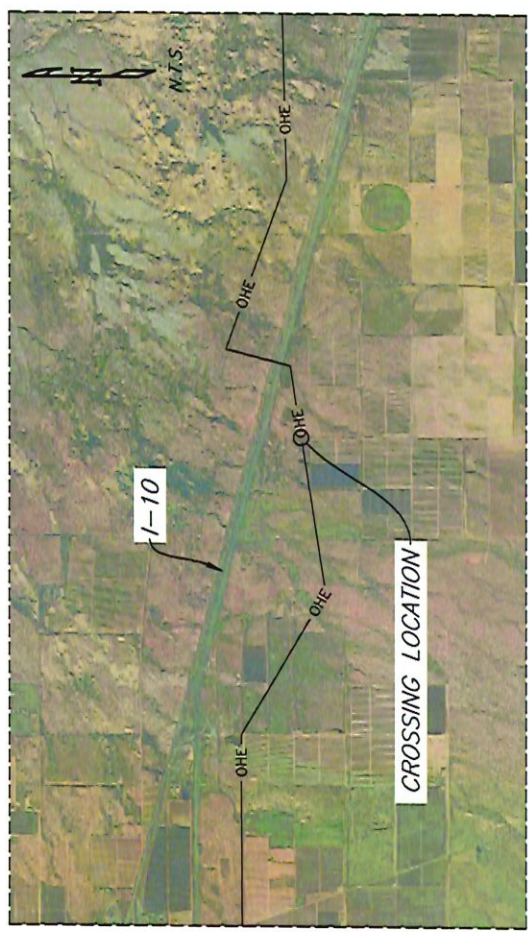
SOUTHLINE TRANSMISSION
PROPOSED OHE CENTERLINE
CROSSING S HAMMERS RD

NTB ASSOCIATES, INC.
525 Louisiana Avenue, Shreveport, LA 71101
318.226.9193 | www.ntbainc.com

SOUTHLINE
TRANSMISSION PROJECT



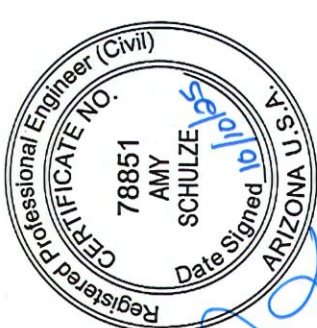
PROFILE SCALE
 HORIZONTAL: 1"=10'
 VERTICAL: 1"=20'



- LEGEND**
- Proposed Electric Line
 - Existing Road
 - - - Apparent Right-of-Way
 - x - Apparent Right-of-Way & Fence
 - r - Property Line
 - - - Top of Slope
 - - - Toe of Slope
 - Proposed Power Pole

NAD 83
 ARIZONA EAST
 ZONE 0201

- NOTES:**
1. BASIS OF BEARINGS: ARIZONA STATE PLANE COORDINATE SYSTEM, ARIZONA EAST NAD 83, ZONE 0201.
 2. IN ADDITION TO THE SITE-SPECIFIC INFORMATION PROVIDED IN THE DRAWING, GENERAL REQUIREMENTS INCLUDED IN PERMITS AND APPROVAL FROM FEDERAL, STATE AND LOCAL AGENCIES SHALL ALSO APPLY.
 3. POLES AND ALL OTHER ABOVE GROUND APPURTENANCES WILL BE LOCATED OUTSIDE OF THE HIGHWAY RIGHT-OF-WAY.
 4. NTB ASSOCIATES, INC. ASSUMES NO LIABILITY, WRITTEN OR IMPLIED AS TO THE LOCATION OR DEPTH OF PIPELINES OR UNDERGROUND UTILITY LINES. CONTRACTORS SHALL USE "ONE CALL" SYSTEM PRIOR TO BEGINNING WORK.
 5. LOWEST ELEVATION OF WIRE EXCEEDS NATIONAL ELECTRIC SAFETY CODE MINIMUM CLEARANCE OF 25.2 FT. CONDUCTOR SHOWN AT MAXIMUM SAG.
 6. 2x BUNDLE 1590 KCM ACSS "LAPWING" CONDUCTOR
 7. STATIONING ON PROFILE IS SOUTHLINE CENTERLINE STATIONING.
 8. WIRE ELEVATIONS PROVIDED BY POWER ENGINEERS, VIA PLS-CADD PROGRAM.



Amy Schulze, PE
 AZ Reg. No. 78851

Should any discrepancies be discovered please notify us immediately.

		SOUTHLINE TRANSMISSION PROPOSED OHE CENTERLINE CROSSING S HOLT RD		PROJECT NO.: 24034010 DATE: 10-10-25 CHECKED BY: AKS SURVEYED BY: CM
		SCALE: 1"=10' DRAWN BY: LHB CHECKED BY: AKS SURVEYED BY: CM	SOUTHLINE TRANSMISSION PROJECT	

16
T13S-R31E
GILA AND SALT RIVER
MERIDIAN

OWNER:
B.L.M. (FEDERAL LAND)

N INDIAN SPRINGS RD
STA 3065+08.31
SPC 83 X=1005902.19
SPC 83 Y=474752.06
NAD 83 LAT=N032.30129581
NAD 83 LONG=W109.17660388

923.6' to Proposed Power Pole

938.6' to Proposed Power Pole

6,227.4' to Kennedy Rd

Apparent Right-of-Way

Edge of Dirt Rd

Fiber Optic Line

Apparent ROW Width

30' ROW Width

Edge of Dirt Rd

Apparent Right-of-Way

Edge of Dirt Rd

Edge of Dirt Rd

Edge of Dirt Rd

Edge of Dirt Rd

Edge of Dirt Rd

Edge of Dirt Rd

Edge of Dirt Rd

Edge of Dirt Rd

Edge of Dirt Rd

Edge of Dirt Rd

Edge of Dirt Rd

Edge of Dirt Rd

Edge of Dirt Rd

Edge of Dirt Rd

Edge of Dirt Rd

Edge of Dirt Rd

Edge of Dirt Rd

Edge of Dirt Rd

Edge of Dirt Rd

Edge of Dirt Rd

Edge of Dirt Rd

Edge of Dirt Rd

Edge of Dirt Rd

Edge of Dirt Rd

Edge of Dirt Rd

Edge of Dirt Rd

Edge of Dirt Rd

Edge of Dirt Rd

Edge of Dirt Rd

Edge of Dirt Rd

Edge of Dirt Rd

15
T13S-R31E
GILA AND SALT RIVER
MERIDIAN

OWNER:
B.L.M. (FEDERAL LAND)

166.1' to Proposed Power Pole

180.7' to Proposed Power Pole

Apparent Right-of-Way

Edge of Dirt Rd

Fiber Optic Line

Apparent ROW Width

30' ROW Width

Edge of Dirt Rd

Apparent Right-of-Way

Edge of Dirt Rd

Edge of Dirt Rd

Edge of Dirt Rd

Edge of Dirt Rd

Edge of Dirt Rd

Edge of Dirt Rd

Edge of Dirt Rd

Edge of Dirt Rd

Edge of Dirt Rd

Edge of Dirt Rd

Edge of Dirt Rd

Edge of Dirt Rd

Edge of Dirt Rd

Edge of Dirt Rd

Edge of Dirt Rd

Edge of Dirt Rd

Edge of Dirt Rd

Edge of Dirt Rd

Edge of Dirt Rd

Edge of Dirt Rd

Edge of Dirt Rd

Edge of Dirt Rd

Edge of Dirt Rd

Edge of Dirt Rd

Edge of Dirt Rd

Edge of Dirt Rd

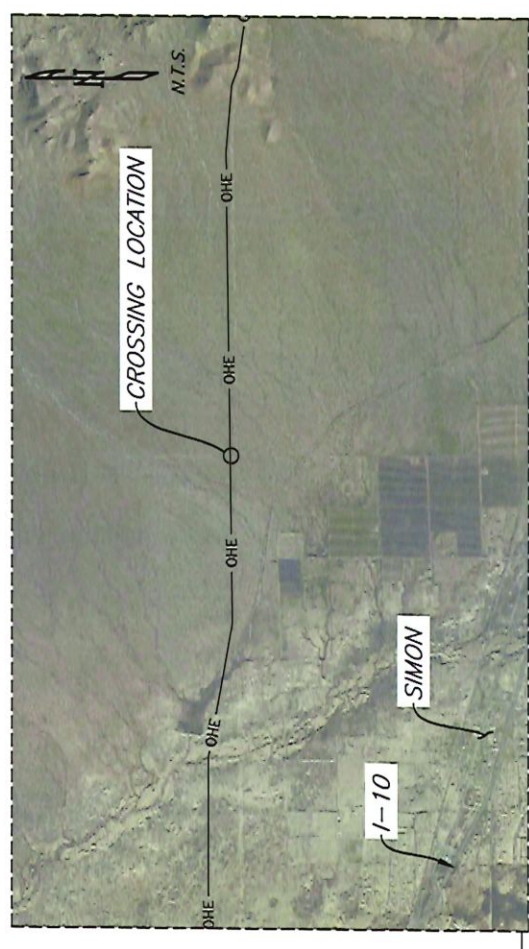
Edge of Dirt Rd

Edge of Dirt Rd

Edge of Dirt Rd

Edge of Dirt Rd

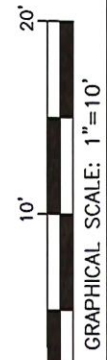
Edge of Dirt Rd



LEGEND

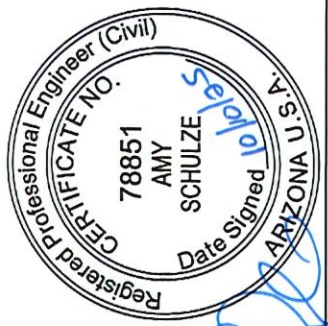
- Section Line
- Proposed Electric Line
- Existing Road
- Apparent Right-of-Way
- Apparent Right-of-Way & Fence
- Top of Slope
- Fiber Optic Cable
- Proposed Power Pole

NAD 83
ARIZONA EAST
ZONE 0201



PROFILE SCALE
HORIZONTAL: 1"=10'
VERTICAL: 1"=20'

- NOTES:
1. BASIS OF BEARINGS: ARIZONA STATE PLANE COORDINATE SYSTEM, ARIZONA EAST NAD 83, ZONE 0201.
 2. IN ADDITION TO THE SITE-SPECIFIC INFORMATION PROVIDED IN THE DRAWING, GENERAL REQUIREMENTS INCLUDED IN PERMITS AND APPROVAL FROM FEDERAL, STATE AND LOCAL AGENCIES SHALL ALSO APPLY.
 3. POLES AND ALL OTHER ABOVE GROUND APPURTENANCES WILL BE LOCATED OUTSIDE OF THE HIGHWAY RIGHT-OF-WAY.
 4. NTB ASSOCIATES, INC. ASSUMES NO LIABILITY, WRITTEN OR IMPLIED AS TO THE LOCATION OR DEPTH OF PIPELINES OR UNDERGROUND UTILITY LINES. CONTRACTORS SHALL USE "ONE CALL" SYSTEM PRIOR TO BEGINNING WORK.
 5. LOWEST ELEVATION OF WIRE EXCEEDS NATIONAL ELECTRIC SAFETY CODE MINIMUM CLEARANCE OF 25.2 FT. CONDUCTOR SHOWN AT MAXIMUM SAG.
 6. 2x BUNDLE 1590 KCM AC SR "LAPWING" CONDUCTOR
 7. STATIONING ON PROFILE IS SOUTHLINE CENTERLINE STATIONING.
 8. WIRE ELEVATIONS PROVIDED BY POWER ENGINEERS, VIA PLS-CADD PROGRAM.
- NTB ASSOCIATES, INC. TAKES NO RESPONSIBILITY FOR THE ACCURACY OF THE ELEVATIONS.



Amy Schulze, PE
AZ Reg. No. 78851

Should any discrepancies be discovered please notify us immediately.

PROJECT NO.: 24034010	SCALE: 1"=10'
DATE: 10-10-25	DRAWN BY: LHB
DATE: 10-10-25	CHECKED BY: AKS
DATE: 02-27-24	SURVEYED BY: CM

SOUTHLINE TRANSMISSION
PROPOSED OHE CENTERLINE
CROSSING N INDIAN SPRINGS RD

NTB ASSOCIATES, INC.
525 Louisiana Avenue, Shreveport, LA 71101
318.226.9199 | www.ntbinc.com



SOUTHLINE
TRANSMISSION PROJECT

