

Initial Site Assessment: Preliminary Design



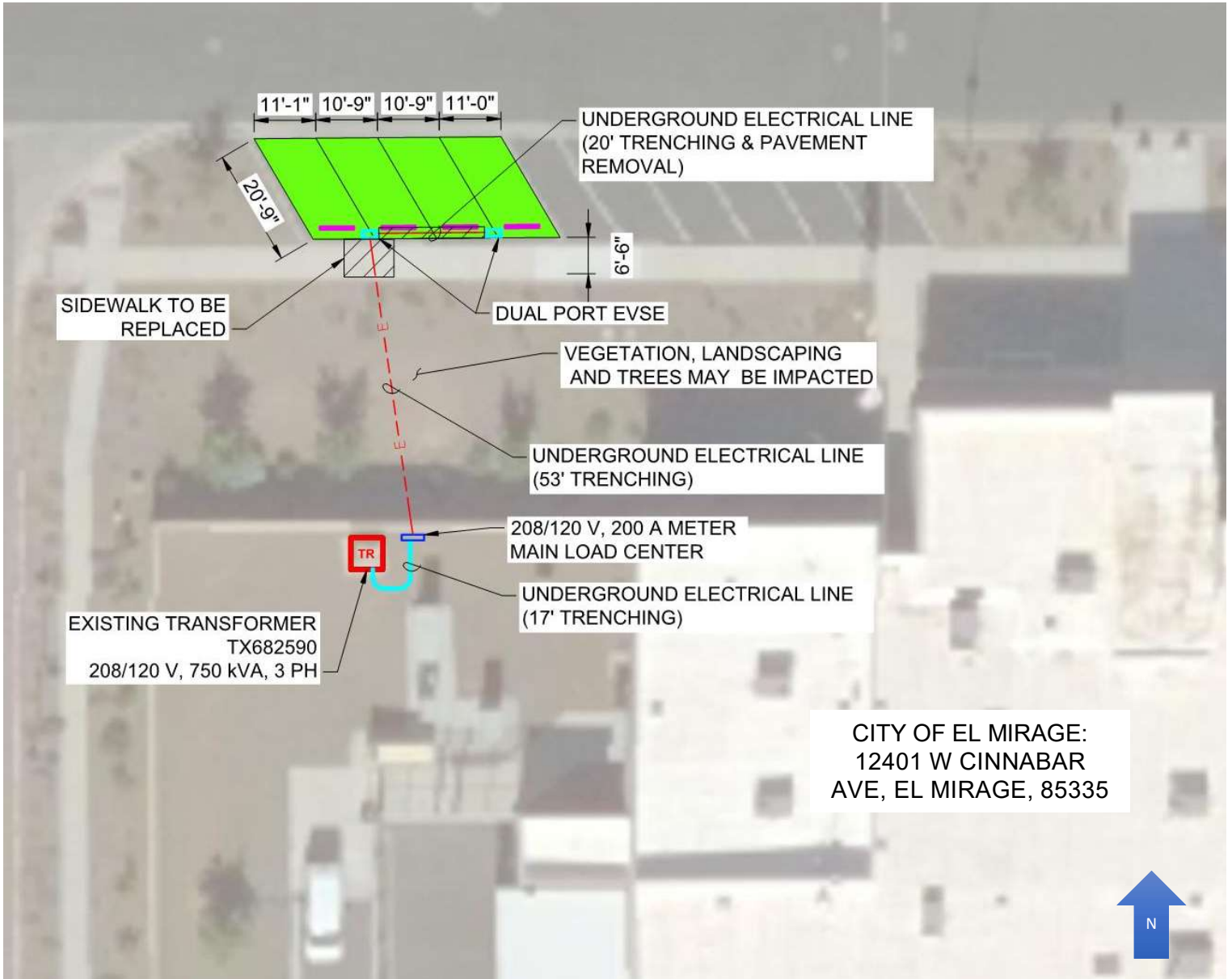
Application Number: APS-244099

Property/Company Name: City of El Mirage

**Address: 12401 W Cinnabar Ave,
El Mirage, AZ 85335**

November 25, 2019

SITE ASSESSMENT - SCALE: 1" = 20'



CITY OF EL MIRAGE:
12401 W CINNABAR
AVE, EL MIRAGE, 85335



LEGEND:

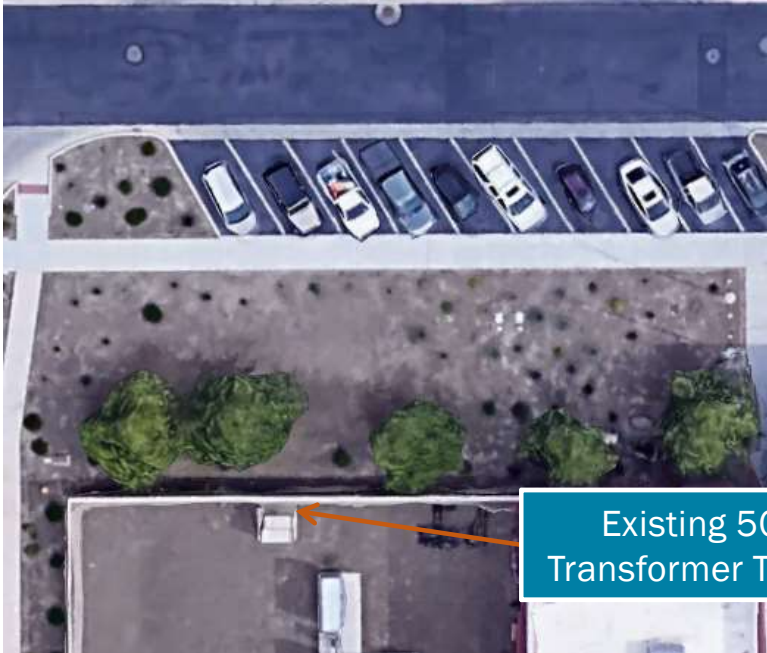
- - - E - - - ELECTRICAL SERVICE TO EVSE, DEDICATE CIRCUIT PER EVSE
- APS ELECTRICAL SERVICE TO PANEL
- DUAL PORT EVSE
- APS TRANSFORMER
- PROPOSED SIGNAGE
- 200A METER PANEL WITH SERVICE DISCONNECT SWITCH
- PROPOSED BOLLARD
- WHEEL STOP
- DISTURBED SIDEWALK/PAVEMENT TO BE REPLACED
- STANDARD EV STALL

PROJECT SUMMARY: THE PROJECT INCLUDES THE LOCATION OF ONE (1) EV STALL GROUPING AREA CONSISTING OF FOUR (4) STANDARD STALLS. NEW EV STALLS TO BE LOCATED IN THE NORTH PARKING LOT OF EL MIRAGE POLICE DEPARTMENT. THE EV CHARGERS WILL BE SERVICED FROM AN EXISTING TRANSFORMER.

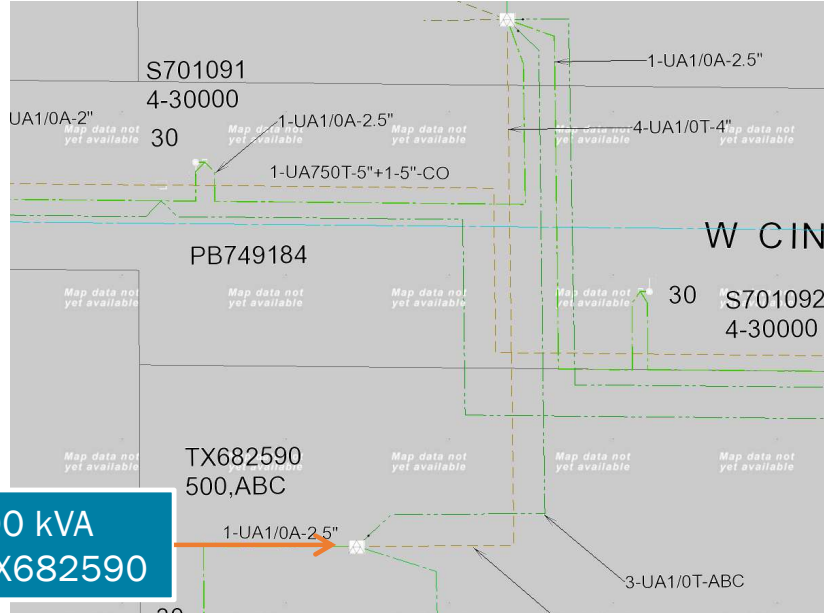
NOTES:

1. UTILITY HAS 24-HOUR UNRESTRICTED ACCESS TO ALL EVSE COMPONENTS AND SERVICE ENTRANCE.
2. PROPOSED TOTAL EV STALLS = 4
 - A. STANDARD STALLS = 4
 - B. ADA STALLS = 0
 - C. STALLS LOST = 0
3. TOTAL EV CHARGING STATIONS = 4
 - A. DUAL NOZZLE (PEDESTAL MOUNT) = 2
4. WALL MOUNTED COMBINED APS COMPLIANT METER AND LOAD CENTER BY MILBANK OR APPROVED EQUAL.
5. WHEEL STOP TO BE PLACED 2 FEET IN FRONT OF PARKING STALL POST.
6. TRAFFIC STRIPING TO BE REPAIRED WHEN DISTURBED. REFERENCE SITE PHOTOS.
7. SURVEY TO CONFIRM ANY CONFLICT WITH EXISTING UTILITIES.
8. PLEASE NOTE EXISTING UNDERGROUND CONDUITS WHEN TRENCHING.
9. ACCESS TO PARKING STALLS ALONG CONDUIT LINE TO BE INTERMITTENTLY INACCESSIBLE DURING CONSTRUCTION.

Attachment 1: Existing Transformer Loading Evaluation



Existing 500 kVA Transformer TX682590



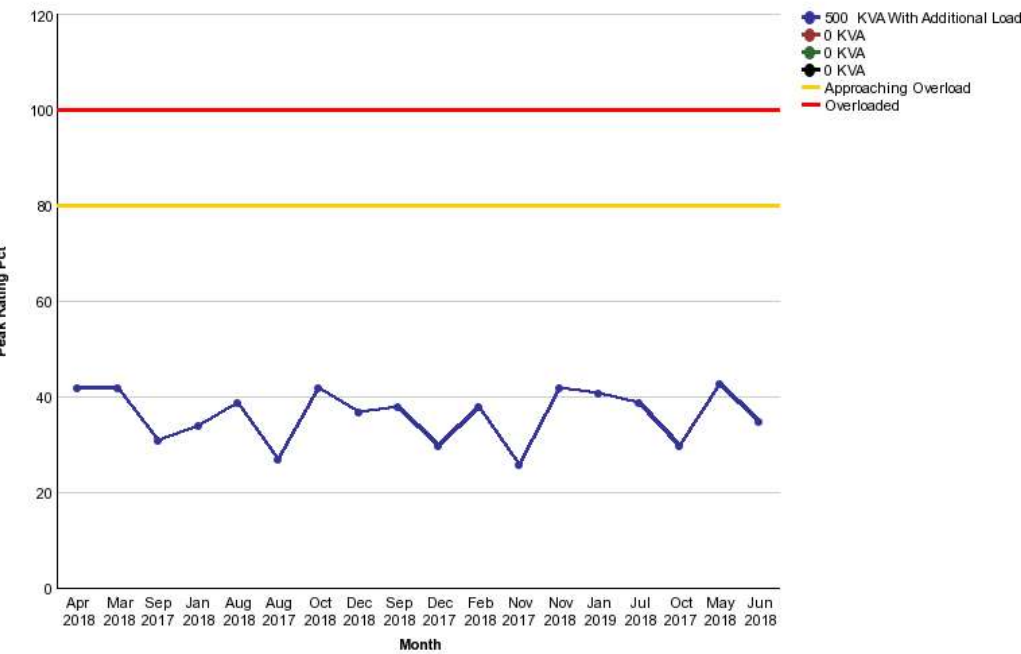
Transformer Number: TX682590

'What if' - Transformer Load Analysis

Additional Load: KW KW KVA

	Actual Transformer	Actual Transformer with Additional Load	Option 1 With Additional Load	Option 2
Transformer Size	500 KVA	500 KVA	<input type="text" value="0"/> KVA	<input type="text" value="0"/> KVA

PHASESPRESENT	3/Phase present
HIGHSIDEVOLTAGE	12470 Volts
LOWSIDEVOLTAGE	120-208 Volts
HIGHSIDECONNECTION	Null
LOWSIDECONNECTION	Null
TAPSETTING	Null
TEXT	TX682590 500,ABC



- Electrical Equipment to be Installed:**
- Connect to Existing Pad Mounted Transformer TX682590
 - Install 200A, 208/120V, 3 Phase Meter Pedestal With Service Disconnect and Panel.
 - Install two EV charging pedestals in indicated area

Conclusion:
Transformer TX682590 is suitable for additional EVSE loads.