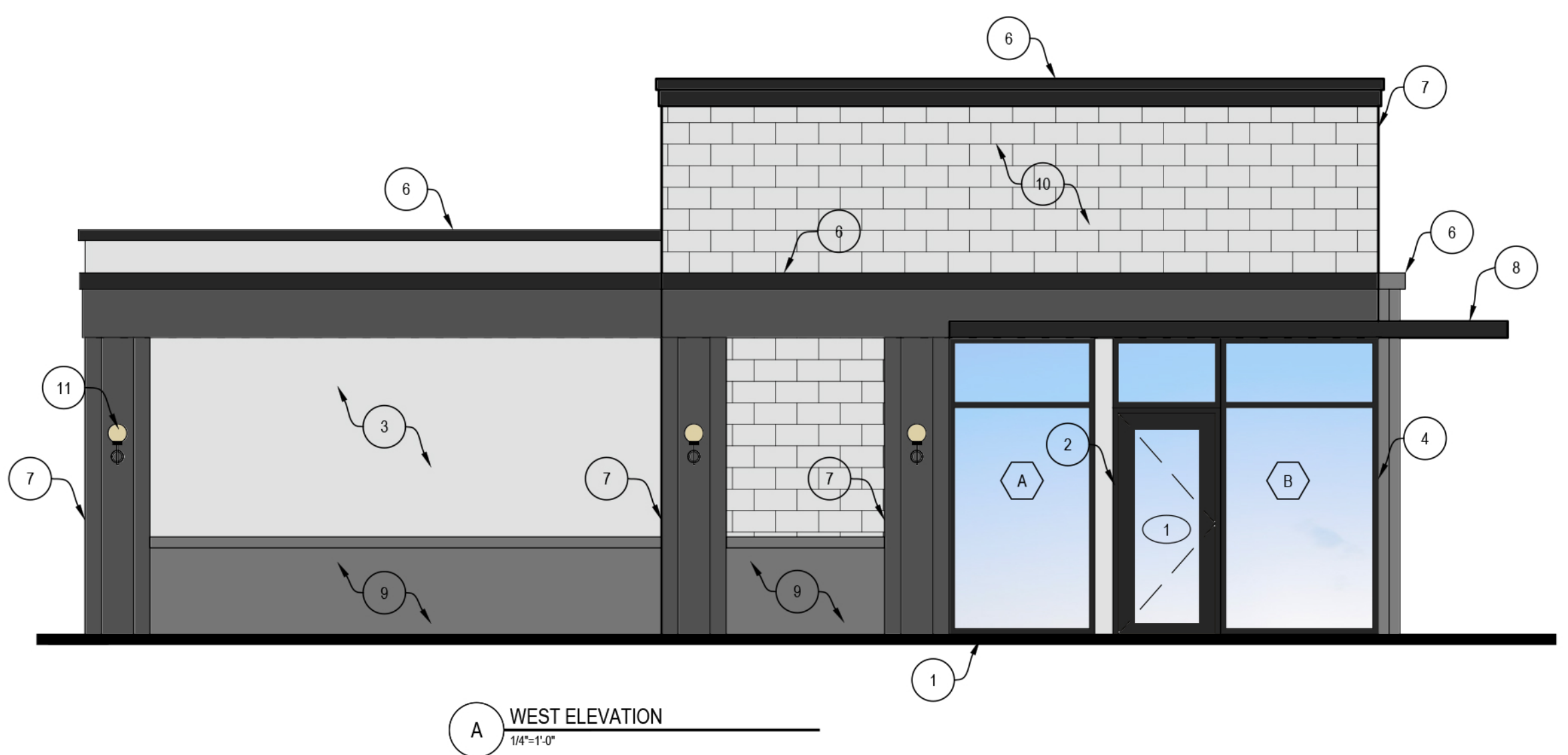
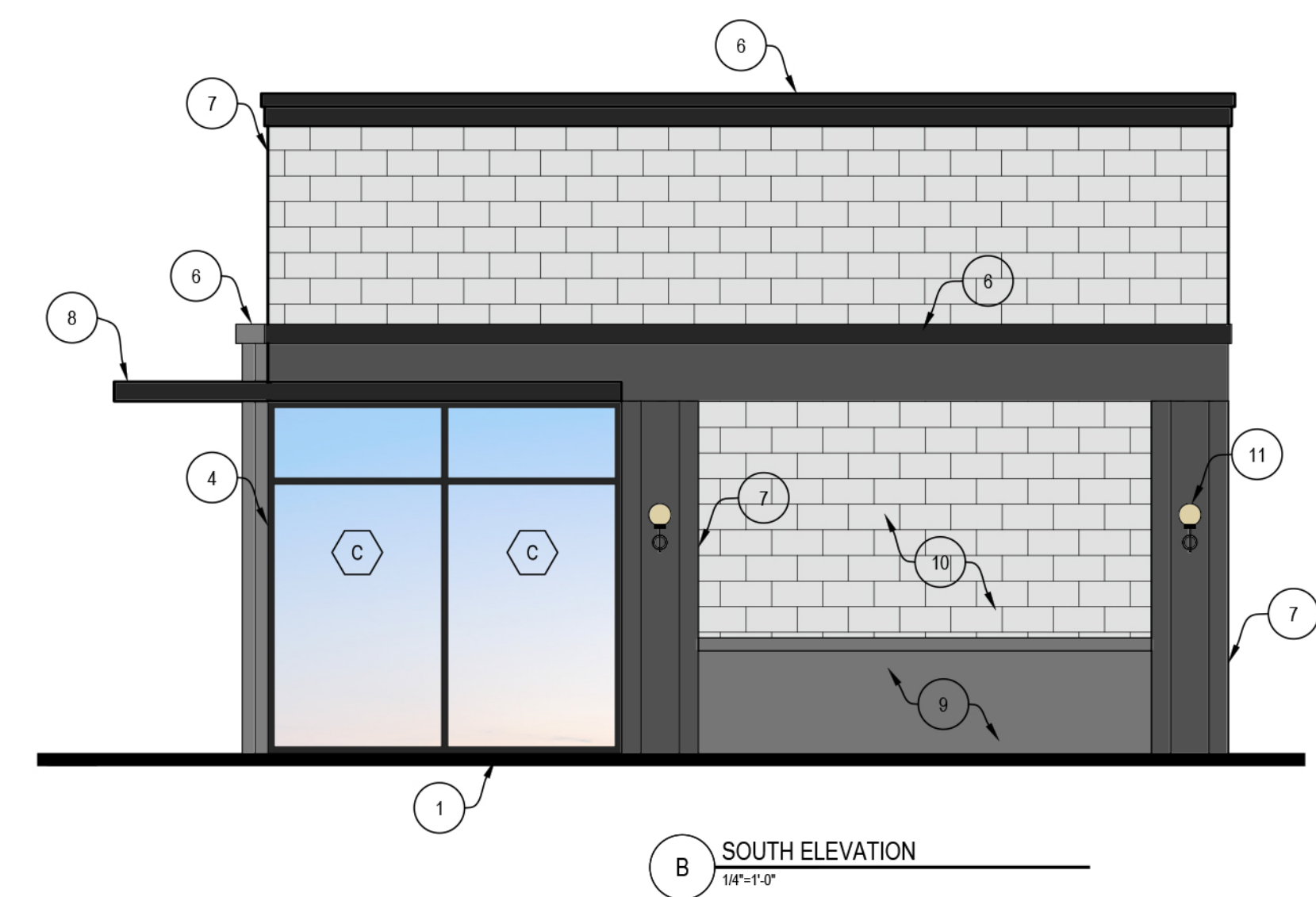


- 1 GRADE LINE
- 2 HOLLOW METAL DOOR AND FRAME - DARK ANODIZED FINISH
- 3 WESTERN 1-KOTE STUCCO SYSTEM OVER 1/2" OSB & TYVEK BUILDING WRAP - ICE GRAY DEC 790
- 4 ALUMINUM STOREFRONT WINDOWS - DARK ANODIZED FINISH - WITH MATCHING BENT METAL CLOSURE PANELS - 1" INSULATED GLASS (SAFETY GLASS WHERE REQUIRED)
- 5 METAL DOOR AND FRAME - PAINTED TO MATCH BUILDING
- 6 METAL CAP FLASHING - PAINTED SAME AS CANOPY - DUNN EDWARDS DE6350 - DARK ENGINE
- 7 WESTERN 1-KOTE STUCCO SYSTEM OVER 1/2" OSB & TYVEK BUILDING WRAP - PAINTED DUNN EDWARDS DET 592 - CARBON DATING
- 8 METAL CANOPY - PAINTED DUNN EDWARDS DE6350 - DARK ENGINE
- 9 WESTERN 1-KOTE STUCCO SYSTEM OVER 1/2" OSB & TYVEK BUILDING WRAP - PAINTED DE6382 FORMAL GRAY
- 10 8x8x16 BEST BLOCK - SPLIT FACE BLOCK - #6 WHITE TERRAZO
- 11 STOREFRONT LIGHTS - SEE ELECTRICAL PLANS

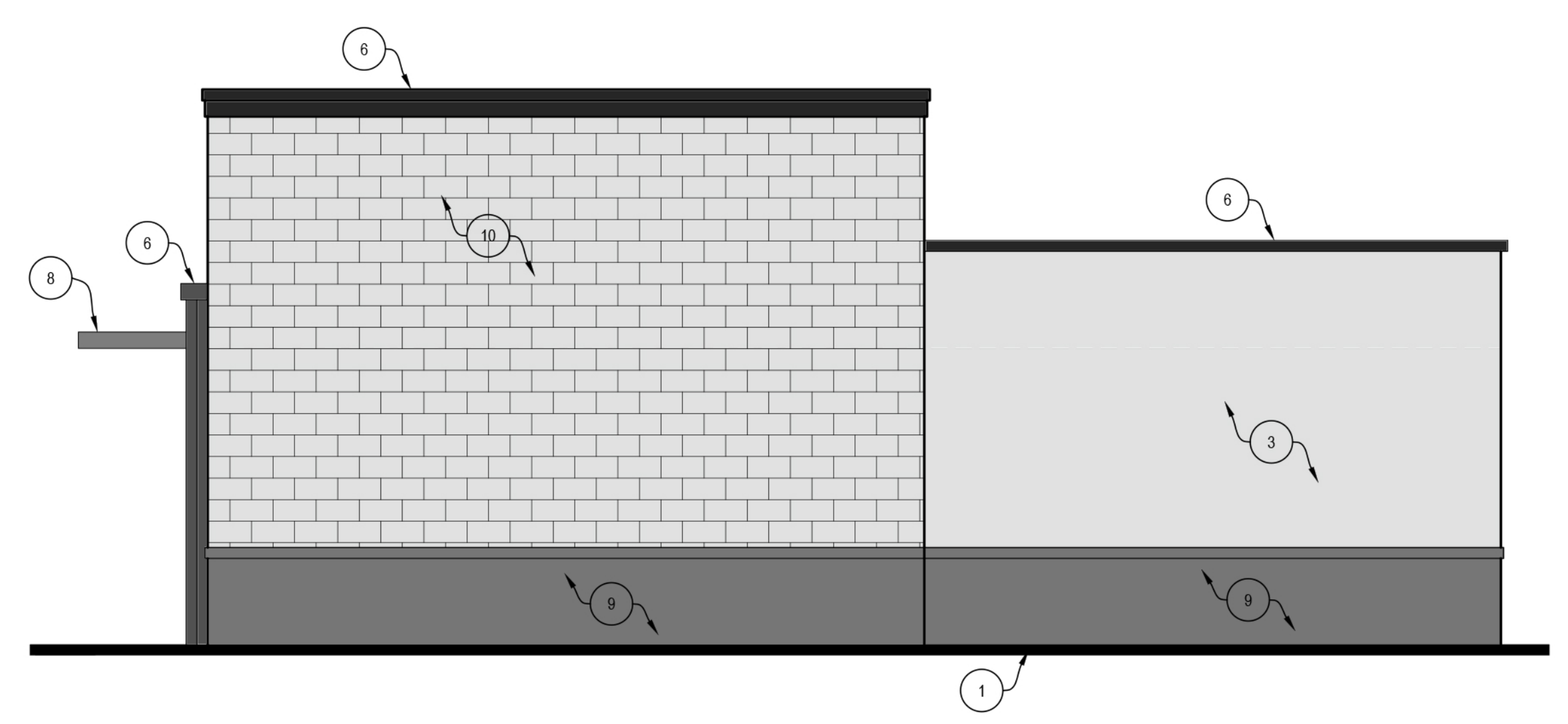
4 ELEVATION KEYNOTES



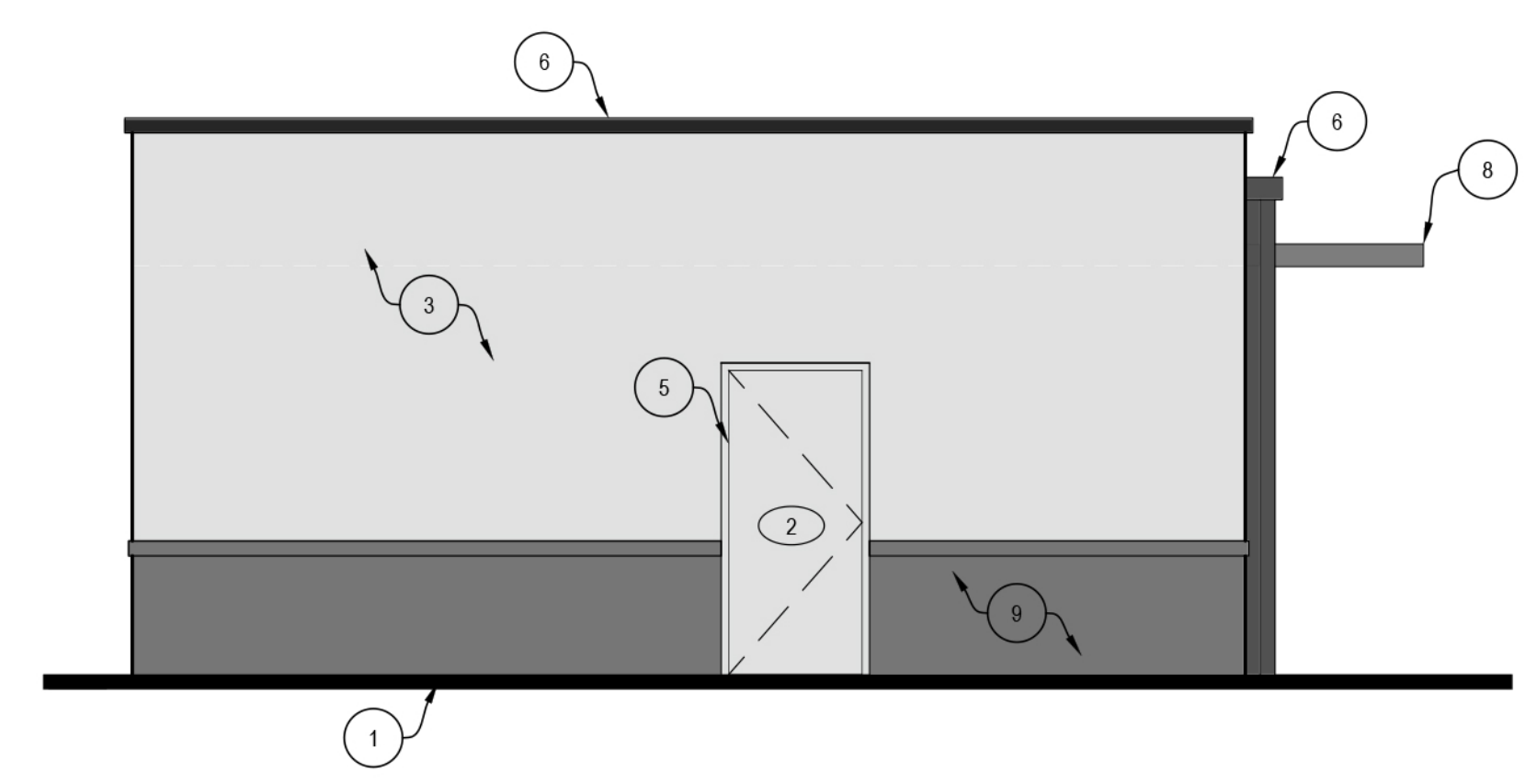
A WEST ELEVATION
1/4" = 1'-0"



B SOUTH ELEVATION
1/4" = 1'-0"



C EAST ELEVATION
1/4" = 1'-0"



D NORTH ELEVATION
1/4" = 1'-0"

5 EXTERIOR ELEVATION
1/4" = 1'-0"

1 FOR CITY USE ONLY

NEW
DOG GROOMING
12030 W. THUNDERBIRD RD.
EL MIRAGE, ARIZONA
Parcel # 501-26-0462

design: RDO
drawn: JO
check: JDO

revisions:

COPYRIGHT 2019, ALL RIGHTS RESERVED.
THIS DRAWING IS AN INSTRUMENT OF SERVICE. IT IS THE PROPERTY OF arc one associates, LLC AND MAY NOT BE REPRODUCED, COPIED OR CHANGED HERE, WITHOUT PERMISSION OF THE ARCHITECT.



date: 09/23/2025
SHEET
A300
of
PROJECT: A0030125