

Joint City/County/NAU
Work Session
April 1, 2019

Transportation

Climate Action and Adaptation Plan

- Rio De Flag Flood Control
- Dark Skies Lighting
- Multi-Modal
 - Bicycle Paths (FUTS)
 - Missing Sidewalks
 - Coordination with Transit
 - “Complete Streets”
- Butler Adaptive Signal Control Project
 - Fiber optic connection Fourth – Beaver (eight signals)
 - Live video and control cabinet control capability
 - Goal is to maximize green time for the traveling public (efficient driving practices)

City Transportation Commission

- Oversight of Transportation Tax
 - Expansion & missing links (capacity)
 - Bicycle/Pedestrian
- Oversight of Road Repair & Street Safety Tax
 - Maintenance of all city roadways to an OCI of 70 or better
- Bicycle Advisory Committee
- Pedestrian Advisory Committee
- Neighborhood Traffic Calming
 - Studies
 - Public hearings

City's 5 Year Plan Highlights

- San Francisco/Franklin Traffic Signal
- Lone Tree Overpass
- Lone Tree Road (Butler to JWP)
- University Realignment/Beulah Extension (Mill Town)

Lone Tree Overpass



Mill Town

La Quinta
Inn & Suites

Beulah Blvd.

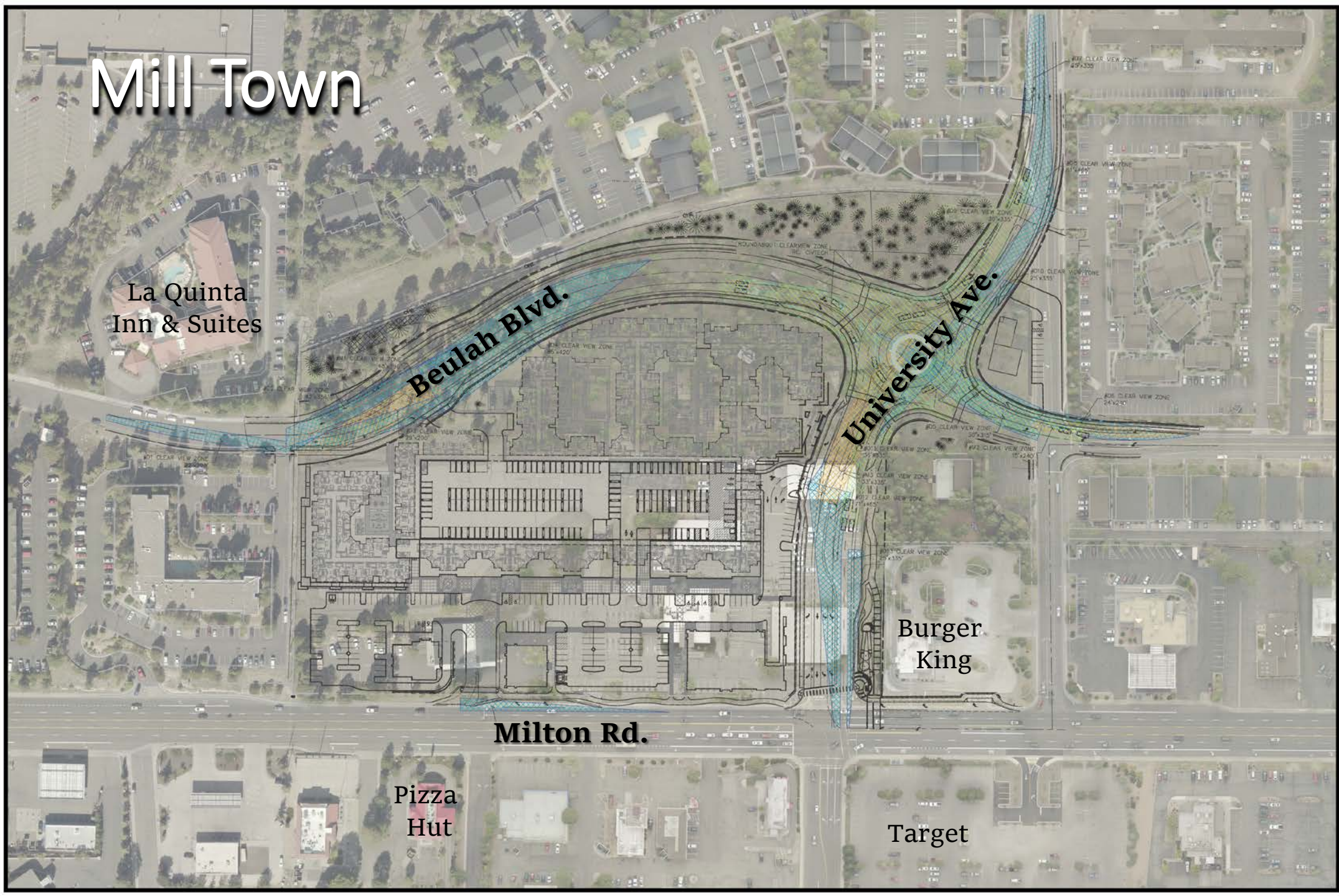
University Ave.

Burger
King

Milton Rd.

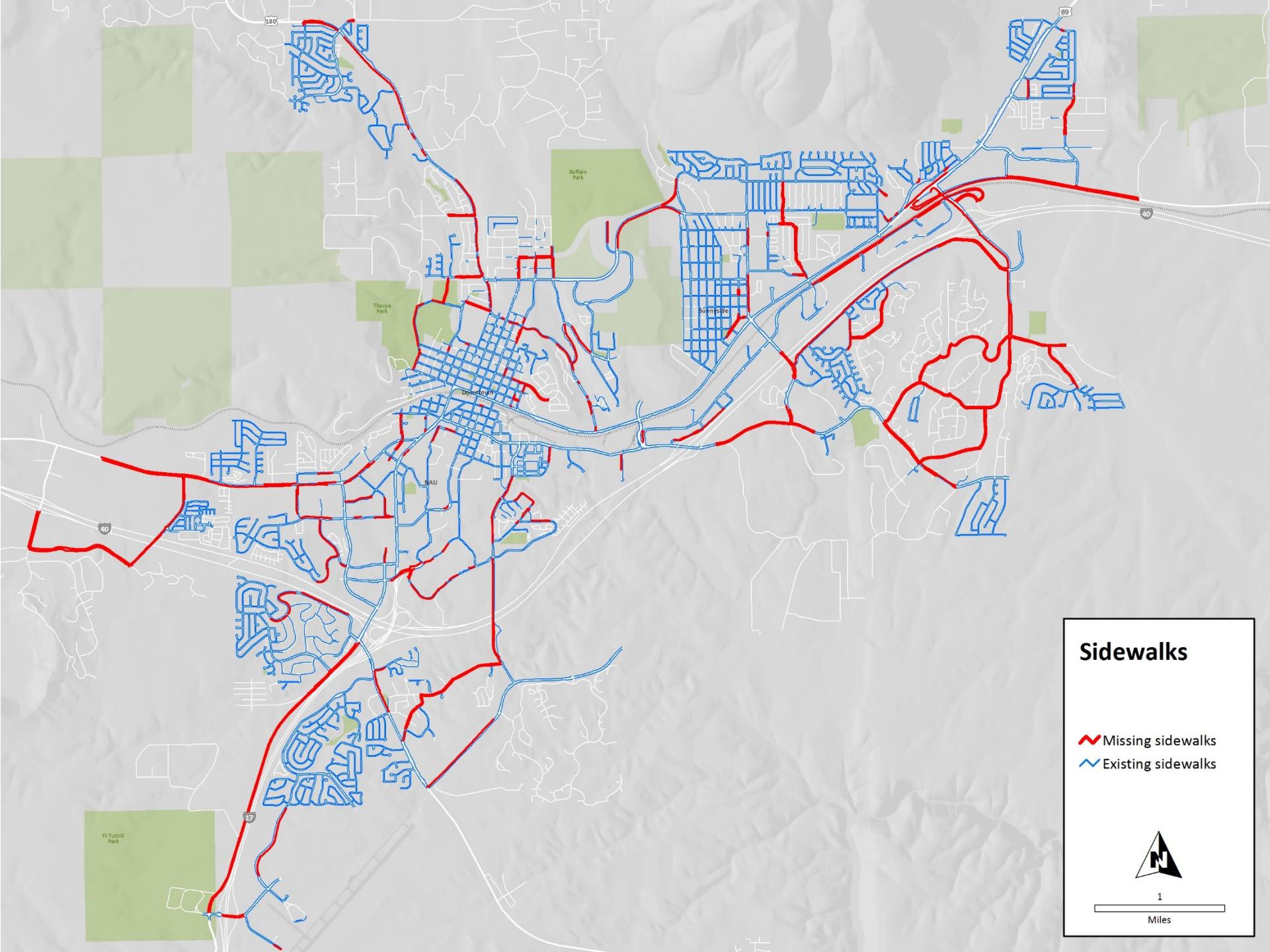
Pizza
Hut

Target



Multi-Modal Project Highlights

- \$2M/year for first 7 years of the program
 - Mountain View/Hoskins Urban Trail Connector

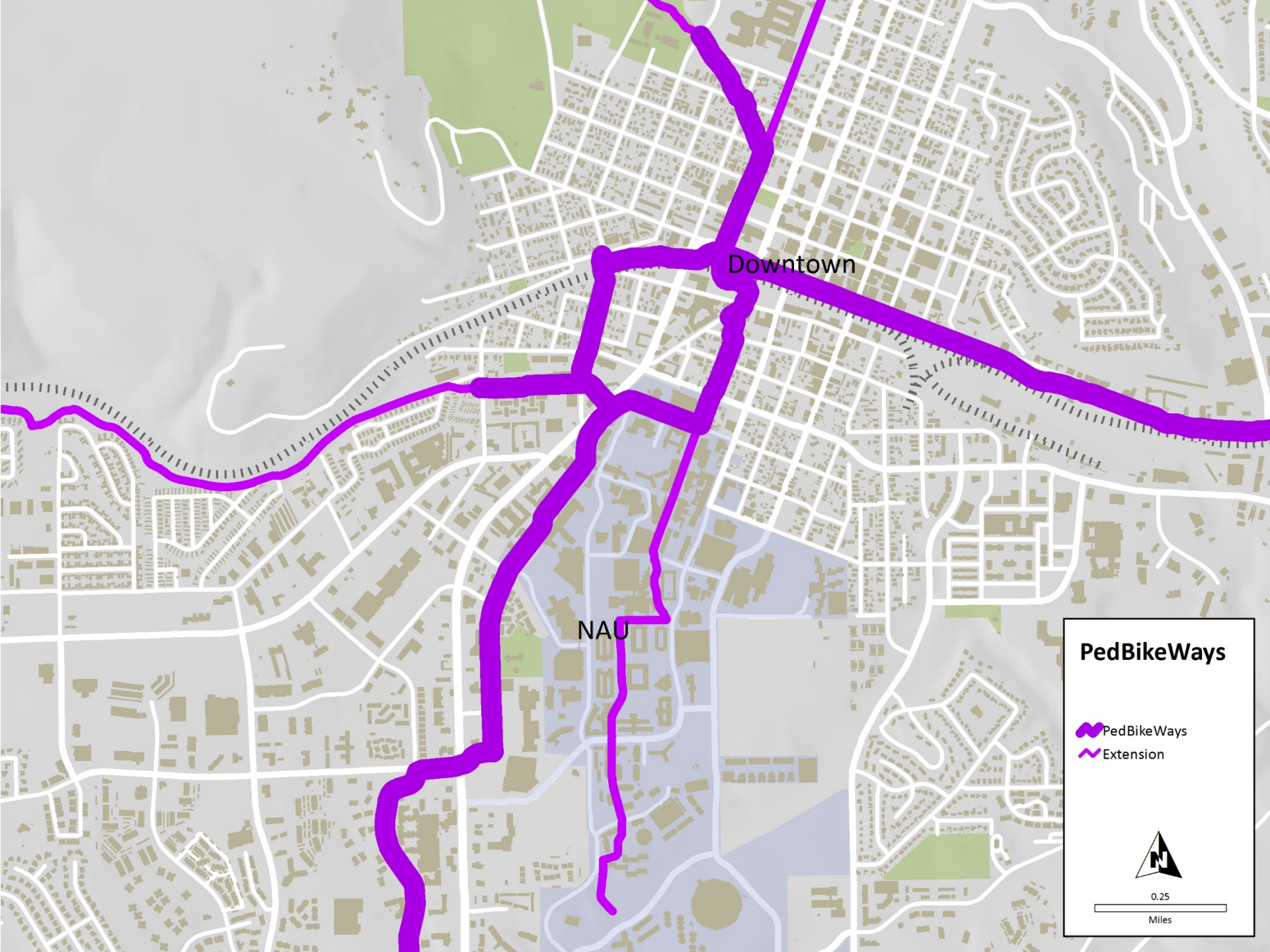


Sidewalks

- Missing sidewalks
- Existing sidewalks



1
Miles



Downtown

NAU

PedBikeWays

-  PedBikeWays
-  Extension



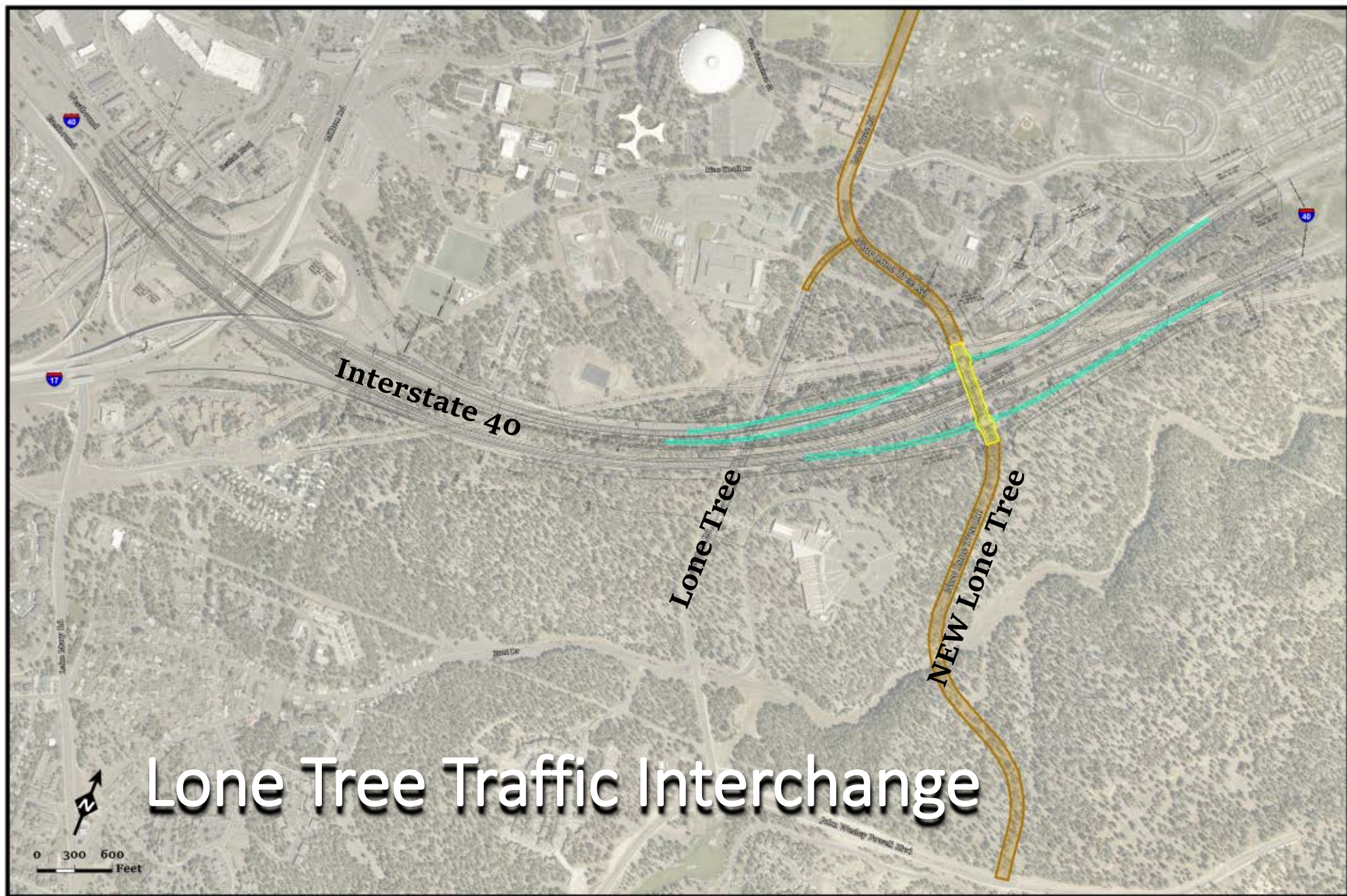
0.25
Miles

Arizona Department Of Transportation

- State Transportation Board (appointed by Governor)
- McConnell/I-17 Bridge Rehabilitation & Widening
 - sidewalk and multi-modal improvements
- Fourth Street Bridges over I-40
- Rt. 66/Rio De Flag Bridge/Humphreys Right Turn Lanes
- Milton Corridor Master Plan
- I-40 Pavement Preservation
 - Possibility for City to consider replacing existing Lone Tree bridges

Flagstaff Metropolitan Planning Organization

- Executive Board, Management Committee and Technical Advisory Committee
 - ADOT, County, City & NAIPTA
- Planning for “Roads of Regional Significance”
 - Major & Minor Arterials
 - Major Collectors
- Highway Safety Improvements Program
 - Fourth/Lockett/Cedar Roundabout
- Continue to pursue funding for Lone Tree Traffic Interchange on I-40



Interstate 40

Lone Tree

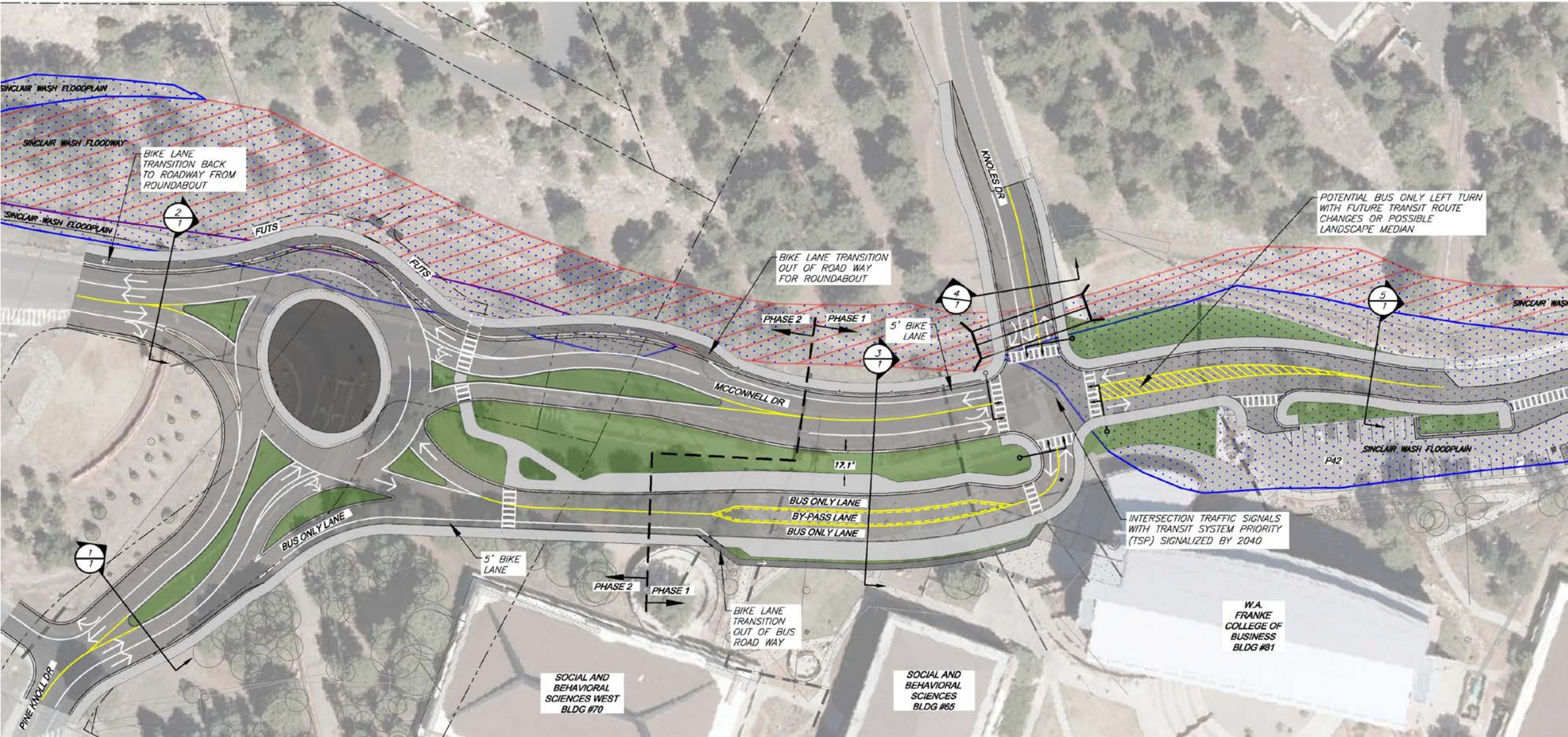
NEW Lone Tree

Lone Tree Traffic Interchange



Northern Arizona University Project Highlights

- Student Athlete High Performance Center
- STEM Building (160,000 s.f. @ Petersen Hall)
- Campus Entrance from Milton/Rt. 66
- McConnell/Pine Knoll intersection



SINCLAIR WASH FLOODPLAIN
SINCLAIR WASH FLOODWAY
SINCLAIR WASH FLOODPLAIN

BIKE LANE TRANSITION BACK TO ROADWAY FROM ROUNDABOUT

2
1

FUTS

FUTS

BIKE LANE TRANSITION OUT OF ROADWAY FOR ROUNDABOUT

PHASE 2 PHASE 1

5' BIKE LANE

3
1

MCCONNELL DR

BUS ONLY LANE
BY-PASS LANE
BUS ONLY LANE

17.1'

5' BIKE LANE

PHASE 2 PHASE 1

BIKE LANE TRANSITION OUT OF BUS ROADWAY

POTENTIAL BUS ONLY LEFT TURN WITH FUTURE TRANSIT ROUTE CHANGES OR POSSIBLE LANDSCAPE MEDIAN

5
1

SINCLAIR WASH FLOODPLAIN

P42

INTERSECTION TRAFFIC SIGNALS WITH TRANSIT SYSTEM PRIORITY (TSP) SIGNALIZED BY 2040

W.A. FRANKE COLLEGE OF BUSINESS BLDG #81

SOCIAL AND BEHAVIORAL SCIENCES WEST BLDG #70

SOCIAL AND BEHAVIORAL SCIENCES BLDG #65

PINE KNOLL DR

1
1

BUS ONLY LANE

KNOX ST

4
1

Flagstaff Unified School District

- Seat on the Transportation Commission
- Discussions to relocate Kinsey Elementary School

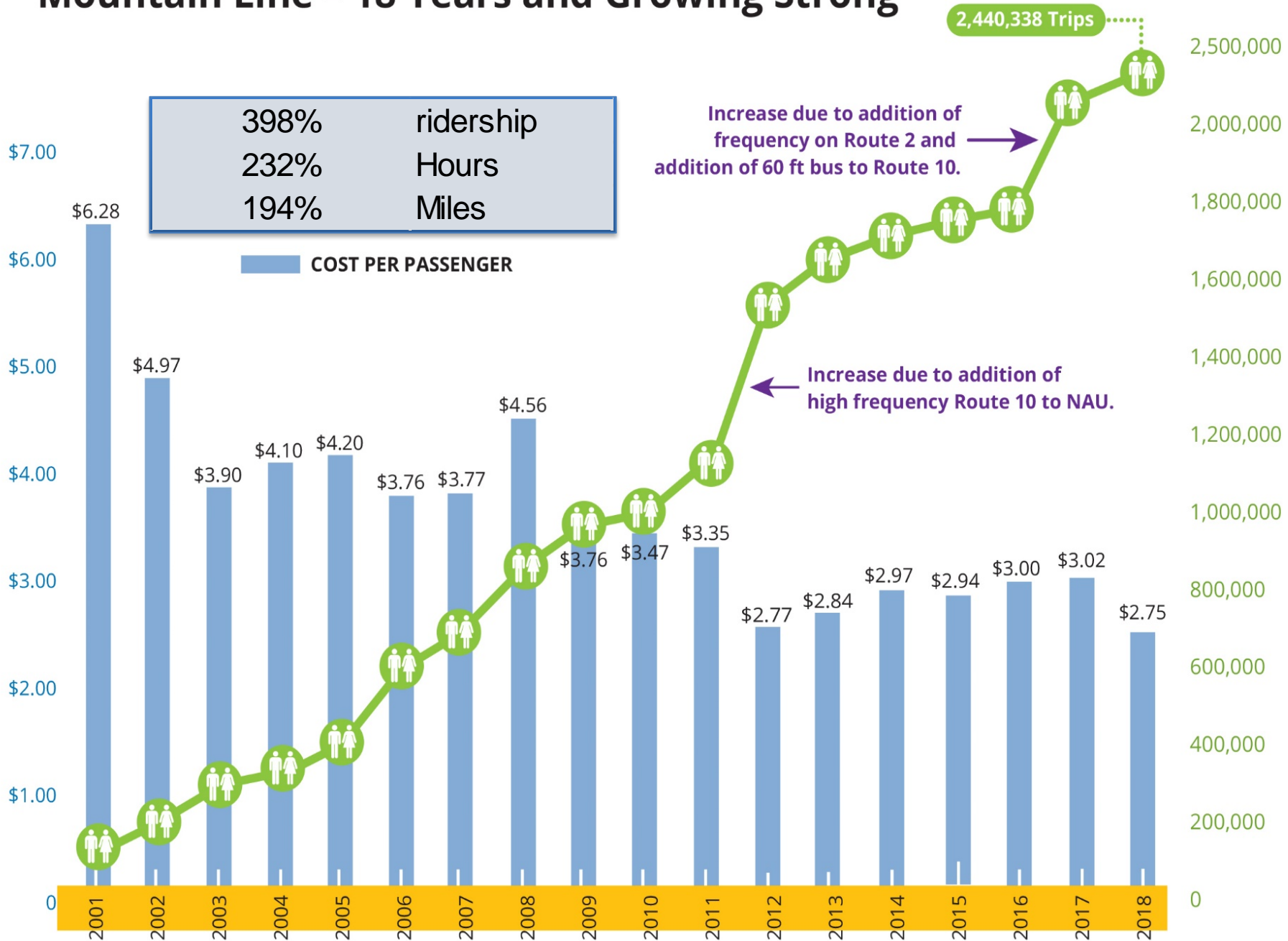
BNSF Railway

- 5 at-grade Crossings in City limits
- Approximately 100 trains/day on two (2) main lines
- Amtrak Passenger Service
- We continue to hear desire to add a third (3rd) rail line
- Projects to be coordinated:
 - Elimination of wayside horns (Steves/Fanning)
 - Lone Tree Overpass rail realignment
 - Amtrak Boarding Platform
 - Rio De Flag Flood Control Project
 - Milton Road Underpass
 - Florence/Walnut Pedestrian/Bicycle Underpass

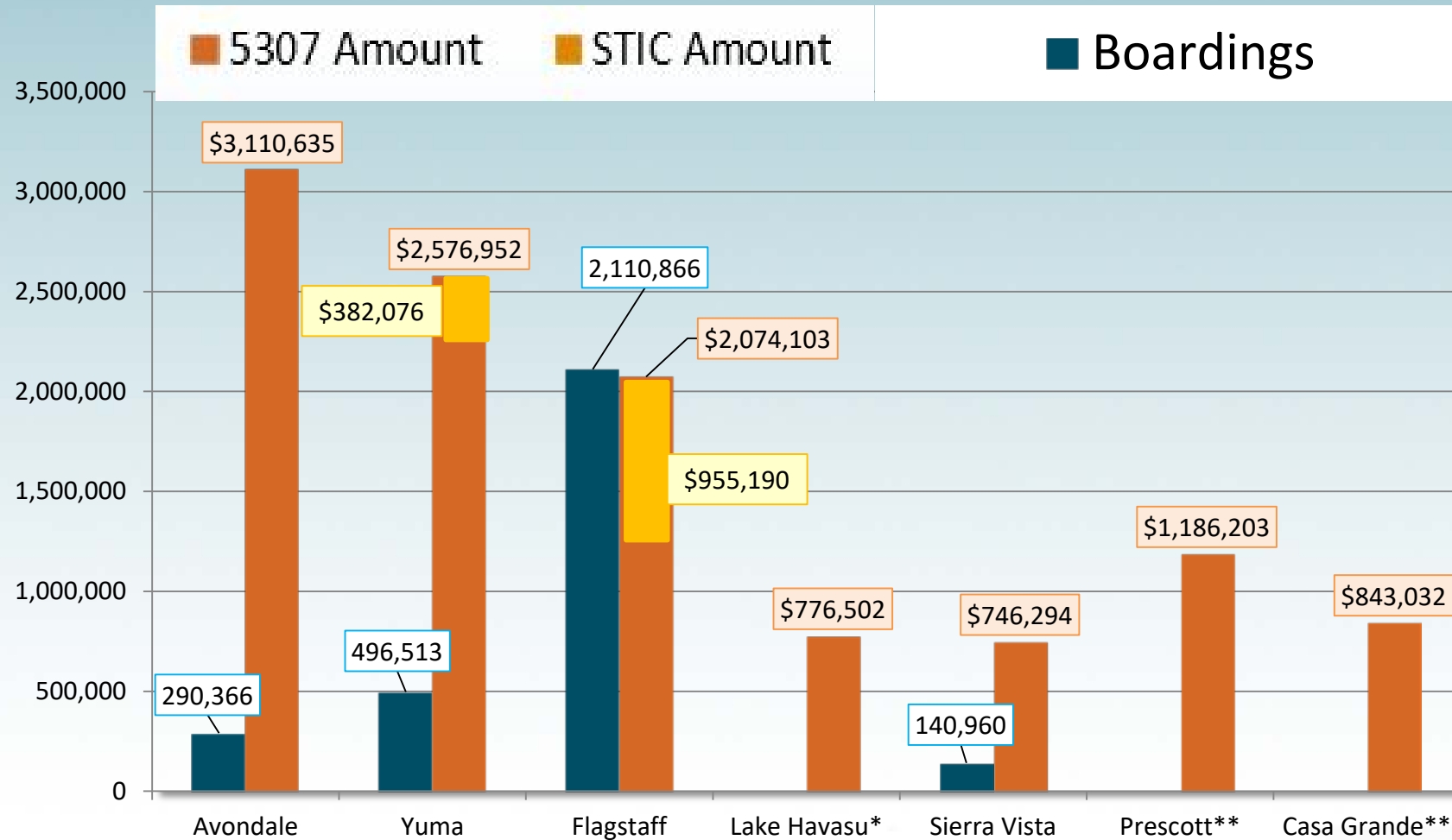


Mountain Line Programs

Mountain Line - 18 Years and Growing Strong



Census Impacts



*The City of Lake Havasu discontinued fixed-route transit in FY15 and now only provides curb-to-curb service

**Prescott and Casa Grande areas did not have municipally-operated fixed-route transit in FY17



Getting you where you want to go





Infrastructure Partnerships

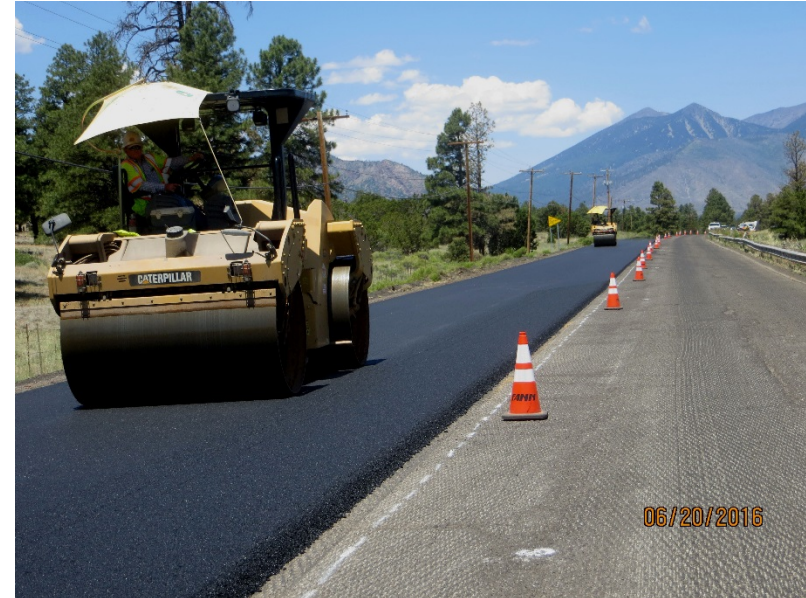
- Kaspar and Rt 66
- Linda Vista Planning
- SBS & Milton
- Electric Vehicle Grant with NAU
- Connectivity of our system
- Signal Priority – Traffic Lights
- FAST Plan: Intersection improvements
- Queue jumps
- DCC Development

Coconino County

- Franchise Utility Coordination Meetings
- Road Repair Tax
 - Maintenance of County roadways and Forest Service roads

Prop. 403 – Promises Made & Kept

- Pinewood Blvd. - \$1.6M
- Munds Wash Bridge - \$460,000
- Koch Field Road - \$1.4M
- Townsend-Winona Road - \$5.1M
- Cosnino Road - \$1.9M
- Kachina Trail - \$1.6M
- Lake Mary Road - \$2.8M (County), \$8.2M (Total)
- Burris Lane Reconstruction - \$2.2M
- Pavement Preservation - \$ 8.1M, 192 Miles
- **Total Cost: \$30.6M**



Upcoming Projects

Mormon Lake Central Federal Lands

- \$5.5M (County), \$9.5M Total

Bellemont Access & Safety

- \$2.3M Roundabout, Reconstruction, & Widening

Townsend Winona US 89 to Rio Rancho

- Likely \$1.6M Mill & Overlay

Spring Valley

- \$300,000 Low Water Crossing



Building a 21st Century Organization

- Lucity Asset Management
- Equipment Replacement
- Growing our Own Workforce
 - Apprentice & Trainee Programs
- Creating a Thriving Culture

